

SOUTHBANK NEWS

southbanklocalnews.com.au

Forever Free

Puzzles & Trivia P22



Kings Way undercroft transformation beckons

Photo by John Tadigiri

Deputy Lord Mayor Nicholas Reece and Southbank3006's Jannine Pattison are all smiles about long-awaited plans to redevelop the Kings Way undercroft adjacent to the Boyd Community Hub, with the council expected to announce community consultation soon. *Full story on page 4.*

E-scooter trial extended by six months with private devices also legalised

WORDS BY *Brendan Rees*
TRANSPORT

The state government's trial of electric scooters has been extended with new rules also allowing younger riders and privately-owned scooters to take part in the divisive scheme.

Minister for Roads Melissa Horne announced in March a six-month extension to the trial, which was launched in January last year and has seen 3.7 million short trips in Melbourne through scooter hire companies Lime and Neuron.

Despite the trial being mired in controversy due to concerns about safety and misuse, the government has recognised the trial's growing popularity and will now legalise privately-owned e-scooters, allowing thousands of

scooters to hit the roads.

Private scooters were classified as unregistered vehicles, with their use in public spaces attracting a fine \$925, however this ban will be lifted when the changes come into effect from April 5.

Under the trial's extension, e-scooters will be permitted on roads with a speed limit of 60km/h or less – up from the 50km/h limit that was in place. They can be ridden on roads, in bicycle lanes, on bicycle paths or separated and shared paths – but will remain illegal on footpaths.

The minimum age of riders will also be lowered from 18 to 16 but all riders must still wear a helmet and adhere to the same blood alcohol content and drug use restrictions as motorists. Riders cannot consume alcohol while travelling on an e-scooter.

Continued on page 7.

“An excellent solution”: New Southbank basketball court to fill void until 2025

A new temporary basketball court will be built in Southbank to replace a recently demolished space nearby at Boyd Park that was much loved by the local community.

WORDS BY *David Schout*
COUNCIL AFFAIRS

City of Melbourne councillors voted in favour of a new temporary court at the corner of Kavanagh and Balston streets, which will remain in place until a permanent play court at the Kings Way northern undercroft is finalised in 2025.

In 2022, two temporary basketball courts were demolished to make way for large-scale private development: the “Underpark” on Queensbridge St, and the popular court at Boyd Park.

It left Southbank, already a suburb with very limited access to open spaces, without a nearby option for active play.

At a November 2022 council meeting, Southbank locals made it clear that the loss of sports courts was detrimental to the local area.

In response, the council prepared four options for pop-up play courts in Southbank, including temporarily removing existing green space at Sturt Street Reserve or Boyd Park.

However, it settled on the space within the Melbourne Square development site, in partnership with developer OSK Property.

OSK will offer up its land and pay to deliver the basketball court which, according to the council, would remain there until the undercroft was delivered.

The new court is set to be built in the next six months and will be locat-

ed around 100 metres from the former Boyd courts site.

Speaking at the March 21 Future Melbourne Committee (FMC) meeting, Southbank Residents' Association (SRA) president Tony Penna commended the move to replace the now demolished Boyd courts, which were a “massive asset to the community”.

Mr Penna said locals were against temporarily turning remaining Boyd Park green space into a pop-up court.

An SRA survey across a variety of channels attracted one of their largest ever responses, with 70 per cent of respondents against the option.

Also speaking at the March 21 FMC meeting, vice-president of fellow residents' group Southbank3006 Jannine Pattison similarly praised the initiative.

“This is an excellent solution, and council should be commended on their innovation in obtaining the commitment from the developer to assist with social infrastructure in the area,” she said.

Lord Mayor Sally Capp said the move was a “great demonstration of partnership between government, community and private sector”, and said the fact that the new court would be “proximate to the court that has gone” was a positive.

Developer PDG removed the much-loved courts at Boyd Park in November to make way for the

Continued on page 2.

STUDENT Q&ARTS, PAGE 03

A Meet fine arts and music student Abi Lee



COUNCIL AFFAIRS, PAGE 05

B New Greenline designs revealed



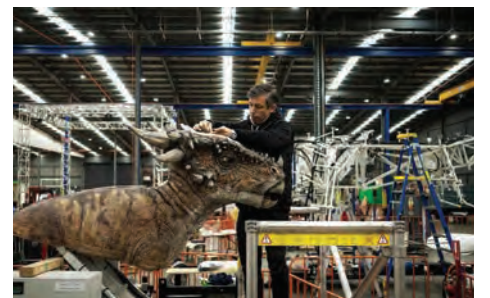
POLITICS, PAGE 06

C Councillor calls for whistleblower support



BUSINESS, PAGE 10

D The company bringing creature to life



Michael Pastrikos Tommy-Lee Davies Max Hui Andrew Salvo Lilian Kwan Trent Bonnici Georgia Ackroyd Austen Kosasih

Buy, Sell, Rent
Speak to our team today

P: 8102 0200 | W: raywhitesouthbank.com.au



HYPERLOCAL
NEWS

CONTACT
Suite 208, 198 Harbour Esplanade
Docklands 3008
southbanklocalnews.com.au
Tel: 8689 7980

EDITOR
Sean Car

PUBLISHER
Hyperlocal News Pty Ltd
ABN: 57 623 558 725

ADVERTISING
Hyper-local print works for advertisers in our digital world because local people are interested in local news. To sell to the Southbank community, contact Jack Hayes on 0401 031 236 or jack@hyperlocalnews.com.au

Reader contributions are welcome. Send letters, articles and images to: brendan@hyperlocalnews.com.au

The deadline for the May edition is April 27.

SOCIAL MEDIA
Follow us on Twitter @SOUTHBANK_News

Like us on Facebook Southbank News

Follow us on Instagram @southbanklocalnews

Opinions expressed by contributors are not necessarily shared by the publisher.

hyperlocalnews.com.au
admin@hyperlocalnews.com.au



“An excellent solution”: New Southbank basketball court to fill void until 2025

Continued from page 1.

42-storey “Boyd Village” which will be home to 434 build-to-rent (BTR) apartments.

Construction on the development began in February.

“[Locals] absolutely loved and appreciated [the court], and it’s certainly been clear to us that it is a demonstrated need for the community,” Cr Capp explained.

“But unfortunately, on the basis of decisions made previously, there is a development happening there now. I say ‘unfortunately’ only in terms of residents feeling let down by that project, but actually in the delivery of it there will be more affordable housing made available, there will be more market housing made available, and there’ll be more community space made available in this very special part of Melbourne.”

Fellow councillors paid tribute to the local action and passion that led to a positive outcome for Southbank.

“It’s been a community-led response and I think it’s been fantastic to see the tenacity that’s come from the local community and the value that’s been placed on these kind of facilities ... it’s great to see there’s so much local engagement,” Cr Davydd Griffiths said.

Deputy Lord Mayor Nicholas Reece added; “This is a great outcome, and an example of a council that listens and acts. We heard loud and clear at that community forum that the problems regarding basketball courts could not have been clearer.”

He later told *Southbank News* that, at this stage, the plan was for one court, but the council was still finalising designs in conjunction with OSK and Cox Architecture, which he thanked.

Cr Reece said that there would likely be



▲ Tony Penna and Cameron Slacik. Photo: John Tadigiri.

stepped seating and landscaped areas around the court.

“I do need to stress that this is a temporary solution,” he said.

“The basketball court will not be permanent, but it will provide vital supporting infrastructure until the permanent northern undercroft site is finished. But for now, it’s the perfect place to put new playing courts ... we know the work doesn’t stop there. We are continuing to investigate every option available for further sports infrastructure and more green space around Southbank.” ●



Victoria Police Community Sentiment Survey opens

WORDS BY *Georgie Atkins*
SAFETY & SECURITY

The Victoria Police annual Community Sentiment Survey has opened, with all Victorians invited to share their safety concerns, engagement preferences, and experiences of local police.

The online survey is running for the second time as a part of the Neighbourhood Policing Framework. Participant responses will be used by Victoria Police to improve future local safety plans and organisational priorities.

Submissions close April 30 with a summary of results to be provided on Engage Victoria as well as on local Victoria Police Eyewatch Facebook pages. ●

Complete the survey:



QUEEN VIC MARKET HAWKER 88 NIGHT MARKET

The Hawker 88 Night Market returns to Queen Vic Market!

Feast on authentic street food, shop for unique wares and enjoy free live music and cultural performances with fun weekly themes.

No entry fee, just come hungry and ready for a good time!

WEDNESDAYS 5PM-10PM
12 APRIL – 10 MAY

HAWKER88.COM.AU



STUDENT Q&A

ARTS



“
Get to know a student's experience of studying at The University of Melbourne's Faculty of Fine Arts and Music. Abi Lee is currently in her second year of the Bachelor of Music (Performance), specialising in Jazz and Improvisation, at the Melbourne Conservatorium of Music.



WORDS BY *Kaylah-Joelle Baker*
ARTS & CULTURE

What attracted you to your study?

A: I'm originally from Auckland, New Zealand and I heard Andrea Keller's [Lecturer in Music for Jazz and Improvisation – Piano] music at a jazz workshop I did in Auckland, and I fell in love and found out she was teaching here, and that attracted me here. And, I have a love for Australian jazz.

Describe a typical day of study ...

A: I come in five days a week and the course is structured with the balance of theory, practical and general musicianship skills. We have two ensembles for the practical and that's where you learn how to work with the other musicians and actually create music, and then you learn to incorporate the theory into the practical, so everything is related, and they all have the same goal of helping us become a great musician.

What has been your favourite experience?

A: Making connections with the fellow musicians, who come from all over the Melbourne jazz scene. I go to their gigs and the next morning I see them in my class which is awesome, and it's really nice to have their perspectives on the tunes they're playing or jazz in general.

What inspires your creative experience and what are the challenges?

A: It's kind of cliché but you are just in a different world when listening to music. And there is something inside of me that goes, 'I really want to do this, and nothing can stop me'. Challenges could be that you have to put everything into this course, and it can get a little much in terms of balancing out your personal life. Music also used to be my hobby and now it's my career, so that kind of throws me off sometimes because I am stressing about this so much but I am supposed to be liking it.

How have you collaborated with other students and what's campus community like?

A: The whole community is very involved and there is always a cross-interaction with the different cohorts, as well as the teachers. In this class called "improvisation materials"



you get to explore the instrument and you can discover other people's thoughts musically and gain perspective from their ideas and idioms on music.

What advice would you give to someone considering your degree?

A: I had so many concerns before I came here, about being in a different country and throwing myself into this course, but I have no regrets. So, if you have a slight idea of wanting to come here and study music or anything else in the arts, you have to do it, otherwise that little voice inside of you will say, 'I should have done it'.

How do you feel connected to your industry through your degree?

A: I think 80 to 90 per cent of the whole Jazz and Improvisation faculty is in the jazz scene. Through this course you are kind of in it but it's a matter of how you involve yourself in it. You just need to find the right person to talk to and say you're keen. University is all about saying you are keen, so be on time, be professional, and that's when the teachers will say you can do it ... and that's how you get a gig, and then once you put on a gig, your name is in people's hands.

What are your goals for the coming years?

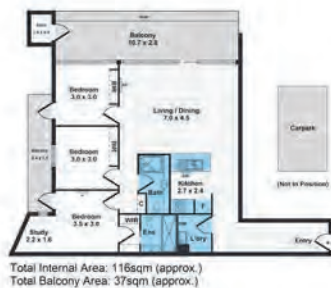
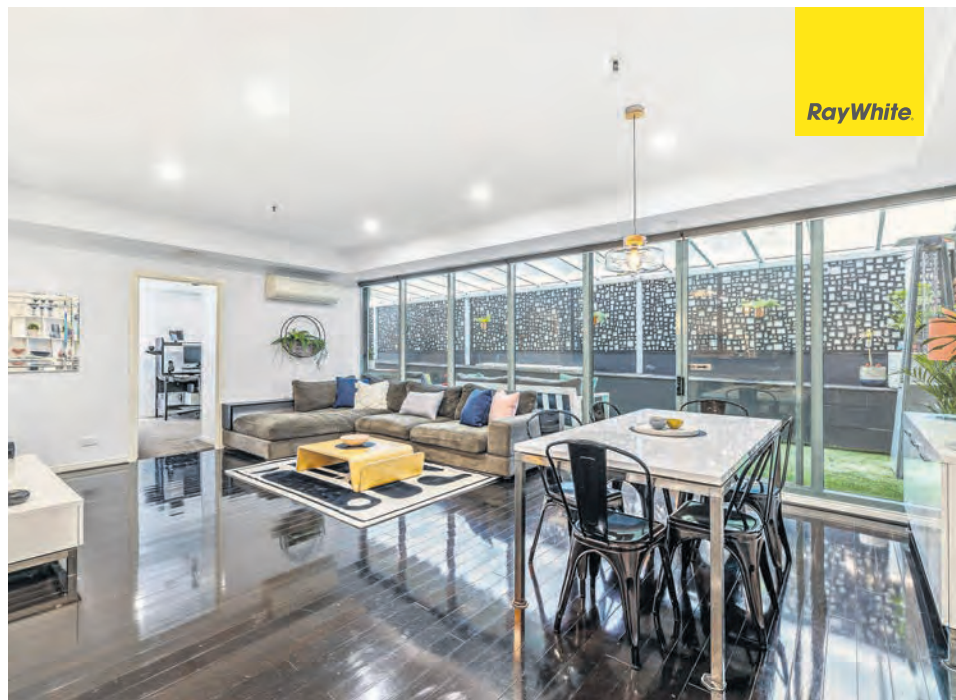
A: I am still growing, and I want to keep working on really shaping myself into the version that I want to be. And just playing piano with all different people and playing my original music and developing my sound.

What does a creative career look like?

A: Being a diverse player. Some people may disagree with me, but I think being a diverse player is a way to branch out a bit more, because if the music you are creating is very niche, then it is going to limit your creative practice. Do different styles ... you can do jazz, funk, blues, or go into the pits and do musicals.

To celebrate International Jazz Day (April 30) you'll be performing with your peers at a special event on April 28. Tell us about the rehearsal process and what excites you most about performing as part of Jazz Day?

A: It's very exciting. We are playing with Sandy Evans from Sydney, so we are rehearsing her tunes and building up to that event we are working really hard to get everything great for Sandy. Having this opportunity is nerve-racking but also fun and it pushes you to practise and explore sounds more, because her music is very unique. ●



3 2 1

Southbank's most recommended agent for the fourth consecutive year

Thinking of selling?
Contact Michael today 0404 282 864



AUCTION
106/83 Queens Bridge Street, Southbank
• Massive 30sqm Private Indoor/Outdoor Terrace
• Ground Floor Car Park on Title
• On-Site Facilities Include a Pool, Gym, and Tennis Court
• Available with Vacant Possession

Michael Pastrikos
0404 282 864
michael.pastrikos@raywhite.com
Giorgio Fulli
0422 806 188
mp.southbank@raywhite.com

raywhitesouthbank.com.au

0404 282 864 | michael.pastrikos@raywhite.com | raywhitesouthbank.com.au



Time to celebrate small businesses

WORDS BY *Kaylah-Joelle Baker*
BUSINESS

Applications for the 2023 Lord Mayor's Small Business Awards officially opened on March 29 and the council is seeking nominations for businesses that have helped shape the city.

"Small businesses are the heroes of our city – they keep Melbourne humming, adding vibrancy, character and appeal to our iconic streets and precincts," Lord Mayor Sally Capp said.

"From hidden gems to well-loved institutions, our Small Business Awards recognise the people and places that make Melbourne so magnetic."

The award program has run since August 2005, with more than 800 City of Melbourne small business proprietors recognised. Given the struggle over the past couple of years, the council is looking forward to celebrating all milestones again this year.

From small businesses that have been around for 10-plus years, to businesses that are celebrating more than 20 years or 40 years, all milestones are recognised, with one outstanding business awarded Small Business of the Year.

For 2023, the council has also introduced a new category called the Small Business Innovation Award to recognise a City of Melbourne business that is "always looking outside the box to demonstrate excellence through innovation."

The winners of 2023's Small Business and the Innovation categories will also receive a cash prize of \$3000 and be announced at the annual Lord Mayor's Small Business Ceremony.

"Now's your chance to recognise Melbourne's exceptional small businesses and the people behind them," Cr Capp said.

"Do you know a legendary and deserving small business in our city? Encourage them to apply for the Lord Mayor's Small Business Awards today."

Last year, Southbank's very own IGA Express Southbank was recognised for its commitment to serving the city for the past 18 years, an achievement that owner Jeff Harper said was nice, as small businesses could often be forgotten.

Nominations for the awards can be made via melbourne.vic.gov.au/smallbusinessawards until April 28. ●

Community set to have its say on the transformation of the Kings Way undercroft

WORDS BY *Brendan Rees*
PHOTOGRAPHY BY *John Tadigiri*
PLANNING

Long-awaited plans to redevelop the Kings Way undercroft adjacent to the Boyd Community Hub are edging closer with an opening date for community consultation expected to be announced soon.

The City of Melbourne intends to renew the undercroft, which has been dubbed "unsightly" and a "waste of space", into a multi-purpose area, providing a range of community activities.

The space, located on the northern side of City Rd, is land owned by the state government, and currently home to a redundant taxi rank, a poorly lit pedestrian route to and from Crown with a lack of surveillance, and an area prone to flooding and lack of protection from heavy traffic.

According to concept designs, the area may include a skate park, basketball courts, climbing walls, sports courts, and a group fitness space.

A play space, temporary art installations/events, and pop-up pavilions/studios are other suggestions for the undercroft, which is about 500 square metres or about the same size as 12 basketball courts.

In March, Deputy Lord Mayor Nicholas Reece said further announcements about the northern undercroft redevelopment – including an opening date for community consultation on the draft designs – would be made soon, "which is going to be really exciting for Southbank".

The project's progress coincided with the news that a temporary basketball court would be built at the Melbourne Square development site.

However, there has been no confirmation of how the revitalisation of the northern undercroft would be funded. As reported by *Southbank News* in August last year, the council's 2022-23 budget planned to draw \$9 million from a "public open space reserve", a pool of cash from developers set aside to create new community public spaces, including the Kings Way undercroft project, to fund the City of Melbourne's \$300 million Greenline trail.

Cr Reece said while he was not in a position to make a comment on the budget, the council's Future Melbourne Committee meeting held recently in Southbank had heard that basketball courts and recreational spaces were the "number one issue raised with us" from residents.

He said through the council's design excellence advisory committee, which included architects, town planners, designers and community members, the team had reviewed undercrofts across Melbourne and identified priority design projects "to unlock these spaces" which had been "forgotten".

"In many cities around the world we have seen these areas reimaged and turned from urban blight into new attractive spaces, which have become a drawcard for people into these areas," Cr Reece said.



▲ Deputy Lord Mayor Nicholas Reece with Southbank3006 vice president Jannine Pattison. Photo: John Tadigiri.

"There's no part of Melbourne which stands to benefit from this work more than Southbank", which is one of Melbourne's most densely populated areas.

"From a city planning perspective, this has created significant challenges as we have endeavoured to retrofit green space, sporting infrastructure and other vital amenities for residents into what was once an industrial area."

"This is not easy, but we are very much up for the challenge and this new basketball court on the Melbourne Square site is a great example of council working hard, and the local community stepping up to deliver a great result for Southbank."

Cr Reece added the council was "continuing to look for more opportunities" to create further sports infrastructure and green space in Southbank by "ringing landowners, and working with anyone who could talk to us to see if we can find a location".

On the council's design excellence advisory committee is community member Dan Ong, who said parks were at a premium in the city, and that it was "really good to spark people's imagination in terms of the possibilities" of revitalising undercrofts.

"Changing that image – a rather negative and gritty image – can be conducive to changing the perception of the city as not just a central business district but a central residential district," he said.

RMIT urban ecologist Dr Holly Kirk said the redevelopment of the northern undercroft's "neglected space is a perfect example of how we can achieve gains for both people and nature using thoughtful urban design".

"Creating a shared community space with basketball courts and appropriate vegetation will not only provide the place with a sense of positive purpose, but the added greenery could act as an important resource for urban species

such as native pollinating insects, in an area that has limited habitat availability," she said.

"Both actions will help make the northern undercroft feel safer, provide a much-needed amenity and contribute to future stormwater control if the right materials are chosen."

Thami Croeser, of RMIT's Centre for Urban Research, also applauded the plan to reallocate redundant road space to new uses, particularly the proposed improvements of green spaces.

But he added, "it's a very high-traffic site for recreational facilities – anyone who has tried to access the existing Boyd facility knows how unpleasant this location is to walk to".

"A few more trees are nice, but the noise and pollution and collision risk remain because the proposal will not reduce traffic lanes or speeds," he said.

"If the council is serious about creating dignified, healthy spaces for community recreation, it should do a proper site selection process. I don't think they'd end up choosing a spot that's this loud, polluted, dark and surrounded by speeding vehicles, particularly given many users are likely to be young people. This sends a message that traffic is the priority, and the community gets the leftover scraps."

Residents' group Southbank3006 said it was delighted the council had reiterated its commitment to redeveloping the undercroft and looked forward to seeing the detailed plans "for this important community space, which is an unsightly blot on Southbank in its current state".

Southbank Residents' Association president Tony Penna said it was "exciting times" for Southbank to have a new reinvigorated space.

"We are certainly delighted this might be making some progress," he said, but added residents were disappointed the project had not come to fruition after it was initially slated for construction in 2021. ●

Hi property owners...

How do you Airbnb your property without the hassle?



Get a free digital copy of our Short-Stay Guide for owners by scanning the code:



or call us at 1300 726 082

Our Partnering Listing Platforms:



HOMES & VILLAS BY HARBODT INTERNATIONAL

THE HOPKINS GROUP



New Greenline designs revealed as Birrarung Marr works pushed back

WORDS BY *David Schout*
COUNCIL AFFAIRS

New designs for the \$300 million Greenline project have been revealed by the City of Melbourne, providing a clearer picture of the council's plan for the "city-shaping" trail.

Works at Birrarung Marr, which represents the first section of the four-kilometre path that is set to run along the Yarra River's north bank to the Bolte Bridge, won't commence until late-2023 at the earliest, despite an earlier expectation works would start in mid-2023.

The latest renders, from ASPECT Studios and landscape architecture group TCL, show more details surrounding proposed boardwalks, event spaces, wetlands, and cultural meeting places.

Perhaps most notably, the latest design ideas include the prospect of rooftop restaurants and cafes atop Northbank's Banana Alley vaults, plus a linear park on Sandridge Bridge.

While the designs are subject to change and conditional upon approvals, they further emphasise the council's bid to revitalise what it views as a substandard part of the city.

Earlier draft plans for Greenline described Northbank — in contrast to its counterpart across the river — as of "poor quality", "lacking activity", "prone to safety and security issues", and an "overall underwhelming experience".

"[It] is currently the unattractive counterpart to the revitalised Southbank which features sunny, attractive, and generally well-maintained pedestrianised public spaces and active building frontages adjacent to a thriving Arts Precinct," it said.

It was not immediately clear why the timeline on "site one" works at Birrarung Marr had been pushed back, and the council, which was yet to put a request for tender on the project, said it had "targeted" a late 2023 commencement.



▲ (Main) near Flinders Street Station, (top right) near Crowne Plaza and Banana Alley vaults, (bottom left) Sandridge Bridge and (bottom right) near Enterprise Park.

The new designs were revealed as part of an update on the Greenline masterplan to councillors at the April 4 Future Melbourne Committee meeting.

From April 5, a six-week consultation period with the community and key stakeholders will begin, allowing the council to gather information — both in-person at workshops, meetings and pop-ups, plus online at the Participate Melbourne webpage — to "further develop ideas and build a shared vision" for Greenline.

"Development of a shared vision is important given the technical complexity of the Greenline Project, community expectations, involvement of multiple stakeholders (property owners, managers and approval agencies) and

the ongoing need to secure additional funding contributions," the update read.

Public consultation for Birrarung Marr works were already undertaken in August and September, 2022, and results were generally positive, with 56 per cent of nearly 200 respondents mostly endorsing stage one works, saying they were "very good" or "excellent".

The City of Melbourne has said Greenline would deliver one of the biggest transformations of the city since the completion of Southbank Promenade in 1990 and the opening of Federation Square in 2002.

"The Greenline Project will revitalise the north bank of the Yarra River, creating thousands of jobs, attracting waves of new visitors,

and injecting millions of dollars into our economy," Lord Mayor Sally Capp said.

"Our landscape architecture and design experts have crafted an incredible vision for what the Greenline project could look like, with stunning boardwalks, event spaces, native vegetation and outdoor dining."

"We want to hear what the community thinks to best inform the masterplan and deliver maximum value for Melburnians." ●

For more information:
participate.melbourne.vic.gov.au



Melbourne's Unique Dining Destination

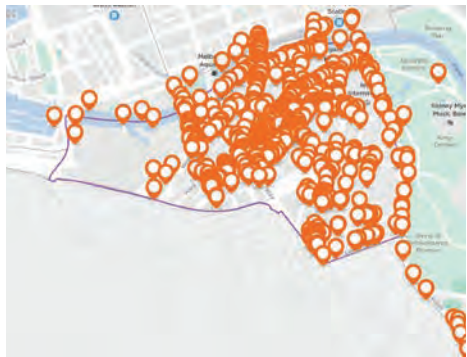
Experience luxury dining with Melba Restaurant's buffet dining 7 days a week.

#MelbaRestaurant #LovingLangham #CelebrateTheEveryday

1 Southgate Avenue, Southbank, Vic 3006, Australia
T (61) 8696 8888 F (61) 9690 5889
langhamhotels.com/melbourne



THE LANGHAM
MELBOURNE



▲ Problem areas highlighted by Southbankers.

Council seeks local views on improving walkability in Southbank

WORDS BY *Sean Car*
COUNCIL AFFAIRS

A City of Melbourne survey into road safety and walkability in Southbank has already seen many respondents share their views, with phase one consultation remaining open until April 10. The council is undertaking the “Southbank Pedestrian and Road Safety Study” to improve connectivity, access, amenity, and safety in Southbank, with traffic engineers reviewing traffic and crash data in conjunction with major developments, strategies and masterplans.

As part of the study, the council is seeking local insights into current problem areas for road safety and pedestrianism, with a view to identifying improvements throughout Southbank to be included in a draft design plan to be released at a later date.

Phase one consultation opened on March 14 via the council’s online Participate Southbank portal and will close on April 10. A second phase of consultation is expected to open mid-year.

Nearly 800 contributions had already been made to the online map at the time Southbank News published its April edition, with the mapping tool allowing locals to drop a pin on an area of concern and make a comment.

Few areas in Southbank and South Wharf hadn’t been highlighted with an orange marker, with safety issues stemming from St Kilda Rd, throughout Southbank Village and surrounding City Rd and Kavanagh St.

Many respondents used the opportunity to urge the council and the state government to get on with completing the vision set out in the City Rd Masterplan, which was finalised in 2016.

To have your say by April 10, visit Participate Melbourne. ●

For more information:
participate.melbourne.vic.gov.au/road-safety-southbank

City of Melbourne councillors unanimously back Voice to Parliament “yes” vote

WORDS BY *David Schout*
COUNCIL AFFAIRS

City of Melbourne councillors have unanimously backed the “yes” campaign in the lead-up to a vote on the Aboriginal and Torres Strait Islander Voice to Parliament.

The move saw it become the first capital city council to “adopt a firm position on the Voice” according to Lord Mayor Sally Capp, ahead of Australia’s first referendum since 1999 later this year.

A motion from the Lord Mayor affirmed the council’s support for the 2017 Uluru Statement from the Heart and the “yes” campaign for constitutional recognition.

It also committed to ensuring locals were as best informed as possible before of the significant vote.

“It’s important to affirm that the City of Melbourne is supportive of the principles of the Uluru Statement from the Heart and the ‘yes’ campaign in particular as we go into the referendum,” Cr Capp said at the March 21 Future Melbourne Committee meeting.

“Referendums don’t happen very often; it’s important that we’re all involved ... from my

perspective, this referendum is one of the most critical in our lifetime.”

The Lord Mayor said that despite being an Australia-wide issue, local councils — as the closest level of government to the people — had an important role to play in ensuring “informed participation”.

“As many other councils have done, [we have] an obligation and responsibility that we have a practical role to play in what is a national debate and a national government-led reform,” she said.

“But our practical role over the coming months is to help ensure that our community is engaged, connected, and informed about every aspect of the debate. It’s an important role that we can play, so people participate in this very significant discussion — that’s got to be the first hurdle.”

Community engagement would include the sharing of information through public meetings and opportunities for discussion, speeches, social media, and other communications.

Following the meeting, Deputy Lord Mayor Nicholas Reece was questioned on 3AW radio how the council could support the “yes” vote before it had (at the time) seen the final wording of the constitutional amendment and question.

However, Cr Reece said councillors were supporting a “principle”, and the technical wording of the question was being used to “confuse and scare” Australians.

The wording was confirmed by Prime Minister Anthony Albanese two days after the meeting.

The council motion also noted that there was a “diversity of opinions” both “inside and outside Aboriginal communities” on the proposed Voice to Parliament.

“We acknowledge that the entire Aboriginal community is not unified in its position, as it wouldn’t be on any position in any community,” deputy chair of the council’s Aboriginal Melbourne portfolio Cr Dr Olivia Ball said.

However, Cr Dr Ball said there was a “strong majority and some very strong leading voices” within the community.

A total of 44 nationwide referendums have been held in Australia’s history, and only eight have been carried. The last referendum was held in 1999, when almost 55 per cent of voters rejected the chance to become a republic.

In the same way that it is compulsory to vote in a general election, voting in a referendum is compulsory for those on the electoral roll. ●

Councillor calls for more support for whistle blowers

WORDS BY *Rhonda Dredge*
POLITICS

The City of Melbourne has once again passed a motion unanimously in support of Julian Assange and his immediate release from jail, but is that enough?

The motion was proposed by Cr Dr Olivia Ball in late February prior to a rally in early March at Queensbridge Square.

The Anything to Say rally was organised by Pen Melbourne to focus attention on whistleblowers, not just Assange.

Cr Dr Ball stood on a chair next to life-sized sculptures of Assange, Edward Snowden and Chelsea Manning to have her say.

She told *Southbank News*, in a frank interview about the issues, that whistleblowers and their protection had never been so important at both global and local levels.

On Monday, March 27, a court in Adelaide held that a whistleblower in the Australian Tax Office could be charged.

“He wasn’t protected by the legislation,” Cr Dr Ball said, despite the fact that his allegations against the ATO had been substantiated.

One of the main issues, according to Cr Dr Ball, was that Victoria’s *Public Interest Disclosures Act 2013* which covers the public sector identifies specific people in an organisation to whom disclosures can be made.

“When people first notice something dodgy they don’t think as a whistleblower,” Cr Dr Ball



said. “They don’t ask: what are my legal rights? They go to other people. The Act says you can only tell this designated person.”

If you do a Google search on “whistleblower” and “City of Melbourne” a document called “Public Interest Disclosure (Whistleblowers) Procedures for the City of Melbourne” comes up, dated 2012.

According to the council, this policy is reviewed and renewed annually, however Cr Dr Ball said she was not aware of the document.

She said she was concerned that, even though it was before her time, if the designated person

was the Lord Mayor that would have been a problem when there had been allegations in the public interest against former Lord Mayor Robert Doyle.

Further down, the document says that the policy was brought in during 2020 and that the CEO of the City of Melbourne, a manager or a designated officer can be the recipient of written or oral evidence.

It goes on to say, “If someone makes a disclosure to an agency that isn’t authorised to receive public interest disclosures, the disclosure will not be protected under the Act.”

Cr Dr Ball is urging attention to this section of the Act. “We need a system to educate staff,” she said.

The outspoken Greens councillor supports Assange and his methods because they provide a system for whistleblowers to remain anonymous.

“The genius of Wikileaks was that he had the brilliant idea of how you could submit inflammatory information to be published anonymously,” she said. “That model was effective.”

She said Chelsea Manning was not tracked for some time.

The rally of 100 people at Queensbridge Square has “put Southbank on the map” as a key political signifier of Melbourne.

“They wanted Fed Square but there wasn’t enough lead time. It had to be big enough for a large group. It gave them the skyline.”

Footage of the sculptures, which have visited 22 countries, has been broadcast globally. ●

VEGIE TRIBE

Veggie Tribe

A pay by weight all you can eat vegan eatery with Australia’s largest variety of plant-based, otherworldly delicacies rotating daily. Something for everyone! Veggie Tribe has grown its roots in the heart of Melbourne’s bustling CBD, bringing with it the largest variety of healthy, meat-free dining options unlike any other.

34-36 Little La Trobe Street, Melbourne

03 9639 7358

www.vegietribe.com.au

@vegietribe

SHOP LOCAL

Supporting business

METROTUNNEL

Construction partner:

Design & Construction

CYP-BS00309

Push to convert Southbank parking into open space

WORDS BY *David Schout*
COUNCIL AFFAIRS

A local residents' group has proposed that the City of Melbourne convert non-essential on-street parking in Southbank into much-needed open space.

As the council released a draft plan to overhaul kerbside space throughout the municipality, Southbank3006 argued that with plentiful parking in the local area and conversely little open space, a redistribution could and should occur.

At the March 21 Future Melbourne Committee meeting councillors endorsed the draft "Parking and Kerbside Management Plan", which primarily focuses on making kerbside parking in the CBD more "fair, simple and reliable".

Plans to simplify signage, make layouts and durations consistent, and improve loading zones were all part of a wider push to improve the often high-demand spaces, after a survey revealed that more than 80 per cent of people found it hard to find a vacant space the last time they visited.

The new plan also sought to repurpose, where necessary, excessive, or disproportionate public parking space for other needs.

"We support the conversion of car parking spaces to be used for another function where there is a strategic need to do so," the draft policy noted.

"Car parking spaces could be used to facilitate important city infrastructure, such as street trees, footpath widenings, tram stops, dining areas and additional open space."

Locals have long highlighted the need for more open space in Southbank, an issue addressed later at the March 21 meeting when the council announced a new temporary basketball facility to replace the recently demolished court at Boyd Park.

The new draft plan also noted: "Parking within parks and gardens should be minimised, providing only essential access for users of that park or garden."

In a submission to the council, Southbank3006 president David Hamilton said the plan was an "excellent piece of work" and argued it simply made sense that excess parking in Southbank was converted into much-needed green space.

"Unlike many neighbourhoods in the city, Southbank abounds in both private and public off-street parking, but falls well short of the council's open space policy requirements," Mr Hamilton wrote. "Accordingly, implementing the plan in Southbank we would argue offers an excellent opportunity to address the open space policy requirements of council."

Speaking later with *Southbank News*, Mr Hamilton said that the move was eminently achievable in the local area.

"These are low-hanging fruit items that the council are able to deliver on ... and it's low-cost. It's very visible and would put the City of



Melbourne at the forefront," he said.

Southbank3006 has previously argued for a move to low-traffic neighbourhoods, and said the new policy underpinned this idea.

"Our starting point has always been, let's get a traffic management study and a transport plan for all of Southbank, one which focuses on risk for pedestrians and cyclists and creates low-traffic neighbourhoods. You work on cutting out the 'rat runs' — and Kavanagh St has now become a rat run.

"The [council] plan actually envisages that we could use that. So, in Southbank we're saying it's a good idea, and gives a policy framework against which the council can deliver."

Demand for parking had changed in recent years, with a higher demand for weekend parking compared to pre-COVID levels and conversely lower demand on weekdays, something the council sought to address.

The draft plan also pledged to put the customer "at the heart" of the new approach and that, notably, infringement and fines would not be viewed as a measure of parking management success.

The council's current maximum on-street parking rate was \$7 per hour, a rate it has not proposed changing.

Head to Participate Melbourne to have your say before April 19. ●

For more information:
participate.melbourne.vic.gov.au



David Schout
JOURNALIST
DAVID@HYPERLOCALNEWS.COM.AU

E-scooter trial extended by six months with private devices also legalised

Continued from page 1.

E-scooters cannot travel above 20km/h while devices capable of travelling faster than 25 km/h are not classified as e-scooters and are still illegal.

The state government said further work would be carried out during the trial extension to understand product safety standards, rider education and if any changes to penalties were needed.

"We know e-scooters are popular with many Victorians — so we're extending the trial in Victoria under these strict regulations to ensure people travel responsibly and safely," Ms Horne said.

Government data from the trial showed about 400 tonnes of carbon had been saved through e-scooter use, with riders hiring e-scooters mainly for leisure, social events, commuting and visits to cafes.

But their use has been met with criticism, particularly with illegal riding on footpaths — a key concern raised by Southbank residents.

Southbank Residents' Association (SRA) president Tony Penna said the extension of the trial was a positive move, "and gives us another six months to continue to advocate to get it right".

"We've made a whole heap of recommendations about the concerns that we've had, but in my opinion the past six months have gone so quickly that I don't think our concerns have truly been considered where they need to be considered," he said.

"We know the issue that is front and centre with residents particularly, and any citizen for that matter, is e-scooters being ridden on footpaths."

Mr Penna said there was an opportunity for the two hire companies to consider adopting technologies that were being used overseas which identified when people were riding on

footpaths and to slow down or stop the e-scooter — which he argued "needs to be a condition of operation for ride share if it's going to continue".

He said he would also continue to advocate to ensure insurance policies were in place so that third parties, such as pedestrians, were covered if they were struck by a rider using a footpath or not wearing a helmet.

Southbank3006 vice-president Jannine Pattison said their group was pleased to see privately-owned scooters being recognised as a legitimate form of transport and "should be embraced as a greener, cleaner and more sustainable mode of transport, reducing carbon emission and traffic congestion".

"But we need education and enforcement to ensure riders know, understand and follow the rules around safe riding," she said.

"The biggest problem Southbank faces comes from 'joy riders'. Firmer commitments are needed from operators to honour their social licence, enforce their geofencing and location, speed, and parking requirements as they are operating on trust."

"We are extremely disappointed the insurance cover required by operators does not include third party cover for pedestrians. Operators should be compelled to hold this 'not at fault' insurance cover to ensure the protection of pedestrians."

"For example, Beam scooters, which currently operate in Queensland, South Australia, and Tasmania, offer third party injury insurance to cover pedestrians. It is interesting that Lime and Neuron do not offer this, which is socially irresponsible."

Victoria Walks executive Ben Rossiter said while their organisation supported different modes of transport to move around the city, it "has repeatedly called for measures including investment in more separated bike lanes that would reduce the rampant use of e-scooters on footpaths, as well as e-scooter rider insurance to cover walkers being hit on footpaths". ●



Lord Mayor Sally Capp with Beverly Caprioli, University Café

Are you a small business in Melbourne?

Apply now for the Lord Mayor's Small Business Awards — celebrating small businesses and the people behind them.

Categories include:

- Lord Mayor's Small Business Achievement Awards
- Lord Mayor's Small Business of the Year
- Lord Mayor's Small Business Innovation Award

Applications close **Friday 28 April**.

melbourne.vic.gov.au/smallbusinessawards



**LORD MAYOR'S
SMALL BUSINESS
AWARDS**

EVENT PARTNER



BarryPlant Docklands and Yarra's Edge (03) 9936 9999



407/216 Rouse Street, Port Melbourne

A sensational 2 bedroom awaits in the "Tingari" residential complex.

2 Bed 2 Bath 1 Car

Auction: Sat 22 April 11am

Price Guide: Contact Agent

Agents:

Alexander George | Eugene Louey
0423 399 999 | 0401 299 997

Music academy elated after securing long-term lease at South Melbourne Town Hall

WORDS BY *Brendan Rees*
COUNCIL AFFAIRS

The historic South Melbourne Town Hall is set to become a world-leading music institution after the City of Port Phillip entered a new lease with the Australian National Academy of Music (ANAM).

The historic Town Hall has been temporarily closed to the public since June 2020, after the council undertook a major restoration and renewal of the site.

But as part of a new arrangement, ANAM will spend \$20.5 million in capital investment to the ageing building under a 35-year lease, which can be extended to 50 years if ANAM provides a further \$19.5 million.

The announcement was made after Port Phillip councillors voted unanimously at their March 15 meeting to award the long-term lease to ANAM.

ANAM board chair John Daley said they were delighted that the council and the community had thrown their support behind ANAM's vision for the South Melbourne Town Hall.

"It will be exciting to make the Town Hall into a world-class venue appropriate for one of the best music education institutions in the world; many of the world's finest musicians come to ANAM, and we are certain that they will be inspired by this great building," he said.

"By working together, we can rejuvenate this magnificent building. It's a huge commitment to the future; many of the ANAM musicians who will be training in the Town Hall, and those members of the local community who will be able to enjoy their music-making, haven't even been born," he said.

Port Phillip Mayor Heather Cunsolo said the lease would secure the long-term future of what has been a much-loved landmark for 140 years.

"We're excited that ANAM's presence will further enhance South Melbourne's reputation as a vibrant, cultural hub for both visitors and our community," Cr Cunsolo said.

"The investment required under the lease also means this impressive building can reopen and again provide a focal point for community gatherings and events as well as hosting civic functions such as council meetings and citizenship ceremonies."

Under the lease, ANAM will be responsible for the building's routine



maintenance while the council will be responsible for capital and major services maintenance and renewal.

The council will soon undertake a multi-million-dollar repair and renewal program to prepare the building for occupancy.

Once complete, spaces will be made available for local community group hire at a discount rate, with a booking system to support community hire of the spaces.

ANAM will offer free membership for the of Port Phillip community and establish a South Melbourne Town Hall Cultural Fund with \$1 from each ticket sold for every event in the building to fund arts and cultural activities in Port Phillip.

ANAM has been a major tenant of the Town Hall since 1996 with other arts, cultural and community organisations having, until recent years, occupied other parts of the building until the temporary closure.

The decision of councillors to award the lease followed their consideration of the more than 560 submissions during a recent consultation about the proposal which attracted 554 submissions, of which 91 per cent supported ANAM remaining at the Town Hall.

As part of the Town Hall's rejuvenation, ANAM will deliver two state-of-art performance venues (for music, dance, drama, comedy, receptions), catering kitchen for functions and events, improved front-of-house amenity, including a café/bar, and extra rehearsal studios among other major improvements. ●



Rubbish build-up "on the nose" for residents

Residents have expressed concern over an increasing amount of rubbish, furniture, and dumped trolleys littering sections of City Rd, in what they labelled as an "appalling, filthy state".

WORDS BY *Brendan Rees*
COUNCIL AFFAIRS

"It appears that people are discarding their rubbish on any available surface, be it around trees, on ledges, on the pavement, on benches and phone booths," resident Tash, who asked that her surname not be used, said.

"The walls and pavement are stained with dog urine everywhere. There appears to be no council maintenance, be it a street sweeper or adequate rubbish bins/cigarette butt bins."

The City of Melbourne launched a new rapid response clean team in March, with crews targeting the streets of the CBD 12 hours a day for the next three months, however they will not operate in Southbank or Docklands.

But the council said City Rd footpaths and gutters were swept and cleaned twice every day, which was the case for other key thoroughfares, including Southbank Boulevard, Southbank Promenade, Power St, and Sturt St. All other streets in Southbank were swept and cleaned weekly.

Lord Mayor Sally Capp said, "As we welcome more people into the city, we want Melburnians and visitors to enjoy the clean, green streets and laneways we're renowned for".

But Tash and other residents voiced their grievances about the poor state of Southbank's cleanliness, particularly during March, which had seen a "sudden and rapid increase in abandoned shopping trolleys full of rubbish,

discarded bits of furniture, and all other manner of general rubbish thrown everywhere".

Another resident pointed to rubbish accumulating at a vacant block at 21-35 Power St, which they described as "disgraceful and potential health hazards", while also highlighting dirty street frontages along City Rd.

Tash said she the council had responded to her report of rubbish, which was removed within two days, but there was "another accumulation of the same kind of pollution and littering, including another shopping trolley of rubbish".

"This will inevitably lead to another weekly ugly unsanitary build up," she said.

"Southbank is such a beautiful and popular place, and it saddens me as a resident to walk down the street and have this the reality of what the environment has become."

Southbank3006 residents' group vice-president Jannine Pattison said as Southbank was a destination suburb, sadly, "we will continue to see visitors treat our home with disrespect as they stumble out of places such as Crown and the Yarra River venues".

"The biggest advice I can give to residents is 'if you see something, say something,'" she said.

Southbank Residents' Association president Tony Penna said he was acutely aware of some issues of littering, particularly overflowing rubbish bins.

"Certainly, rubbish bins are on the SRA's radar; we have been in many discussions with the council, and we have seen improvements as a direct result of those consultations," he said.

"However, in saying that there are some areas in Southbank that still need more attention," he said, which he'd raised at the council's April 4 meeting.

The council said litter bins in Southbank and Docklands were emptied at least once a day, while bins located in busy locations were serviced multiple times a day – with crews also proactively patrolling daily for graffiti.

Rubbish, graffiti, or bin issues can be reported via the City of Melbourne website, by phone (9658 9658), or by scanning QR codes on public litter bins. ●



Sunday 16 April

9am Festival Service with Bach cantata

Erfreut euch, ihr Herzen (BWV66) for 3 soloists, choir, strings, 2 oboes, trumpet and continuo

St Johns Bach Choir and Orchestra directed by Graham Lieschke

Christopher Roache (countertenor)

Timothy Reynolds (tenor)

Oliver Mann (bass)

20 City Road Southbank Telephone 9682 4995

Good Friday 7 April

10am Worship with communion

Easter Sunday 9 April

7am Dawn Worship

9am Worship with communion

Every Sunday

9am Worship

Check our website for updates

www.stjohnssouthgate.com.au

“Sounding board for the city”: Presidents of Residents forum providing valuable counsel to council

“Established during COVID-19 to collate feedback from well-connected locals, the “Presidents of Residents” forum is now a permanent part of decision-making at Town Hall.

”

WORDS BY *David Schout*
COUNCIL AFFAIRS

At the height of COVID-19, decision-makers at the City of Melbourne needed advice on how to best help a local population that, like the rest of the state, was struggling.

Many locals were stuck inside for large parts of the week, shopfront vacancy signs were increasing by the day, and international students were seeking assistance in huge numbers.

The council needed on-the-ground feedback from residents and established a working group on the run to help with that.

To this day, the group remains a cog in the decision-making machine at Town Hall and having moved on from providing pandemic-related ideas for assistance, it now advises on things like safety, planning and transport.

Named the “Presidents of Residents” group — a title that has since stuck — the forum assembles leaders from residents’ groups across the municipality, to garner both suburb-specific and city-wide ideas.

Representatives from both local residents’ groups — Southbank Residents’ Association (SRA) and Southbank3006 — regularly attend the meetings, and have been complimentary of its impact.

“It’s an excellent forum, because it creates another channel for residents’ groups to have exposure to council officers on key policy issues,” Southbank3006 president David Hamilton said.

“It also enables the council to take up on a citywide basis the same policy issue, but fine-tune for different areas ... for a capital city council, I think it’s a very interesting initiative.”

SRA president Tony Penna, who has been involved since the forum’s inception, said having face-to-face interactions with decision-makers was important.

“I find it informative and feel it is a great forum to have the ear of the Lord Mayor, simultaneously with other presidents to learn that many may be experiencing the same issues,” he said.

Both said the interaction with nearby residents’ groups in the CBD and Docklands was particularly beneficial, as they experienced similar issues as mixed-use areas with a high percentage of high-rise locals.

“In a perfect world, I would break it into two groups; CBD, Docklands and Southbank, and the others,” Mr Penna said.

“The reason for this is that the issues are all very similar within those groups therefore the time is more efficiently used for issues which are relative.”

President of Drill Hall Residents’ Association in the CBD, Martin Mulvihill, told *Southbank*

News the forum was an exercise that simply made sense.

“The City [of Melbourne] should be proud of it,” Mr Mulvihill said.

“I think it works ... it acts as a kind of sounding board or feedback system for the city.”

President of fellow CBD residents’ group EastEnders Dr Stan Capp said the endeavour had become a “very valuable forum”.

Dr Capp and other community leaders had pushed for last year’s “Safety Summit” — which brought together the City of Melbourne, Victoria Police, residents’ groups, and stakeholders to address key issues facing the city — which he cites as an example of forum suggestions put into action.

“It’s been an opportunity to raise issues and have them considered — and I think they’re always offered and considered in a respectful environment,” he said.

“I think we can have a free and open discussion about anything we like, quite frankly. It’s been a good forum for that.”

Lord Mayor Sally Capp was central to the group’s establishment in 2020 and, along with Deputy Lord Mayor Nicholas Reece, regularly convenes with the group.

Cr Capp’s office put together an agenda for each meeting (they also open the floor for discussion points) and invite presenters to speak with the community leaders.

Recently, this included representatives from both e-scooter companies currently heading a 12-month trial within the city — Lime and Neuron.

The companies were informed by the Presidents of Residents group of particular hotspots and pedestrian-heavy areas where scooters were being incorrectly parked on a regular basis.

The group is one of two ways the council has sought to improve communication between



it and residents, the second being via online neighbourhood portals.

“All of the feedback provided by the presidents and via the portals is considered, and action is taken where feasible,” the Lord Mayor told *Southbank News*.

“City of Melbourne greatly values the insights gathered from the Presidents of Residents group and looks forward to achieving more positive and collaborative outcomes in future.”

While the group is seen as an example of how local government can utilise residents’ expertise to achieve positive outcome, there was still room for improvement according to participants.

“I think there’s a hunger to play a more hands-on role in direction-setting rather than necessarily just providing feedback, despite that being really important,” a Docklands Residents’ Group spokesperson said.

Mr Mulvihill added that the forum’s configuration probably did not span enough cohorts.

“It’s sort of unrepresentative, necessarily so because it’s dealing with established organisations like resident organisations,” Mr Mulvihill said.

“As such it probably cuts out the big young student and young people population generally in the city.” ●

New to Southbank?

Have you recently moved to Southbank? Find out how to get the most from Southbank’s fantastic community (including services and public facilities) at our free information session.

FREE information sessions for new residents

Southbank Residents Association is a not-for-profit community organisation that advocates for residents and aims to bring together and support the interests of everyone who lives or works in Southbank.

To register for the next information session, go to our website: www.southbankresidents.org.au

Next Session Date: Weds, 19th April at 7:30pm
Location: Boyd Community Hub, 207 City Rd, Southbank VIC 3006

Community Event

A History of Southbank Talk

Southbank Residents Association is bringing you this highly informative info session.

Regular Southbank News columnist, Robin Grow, will present a talk titled:

‘Places, events and visitors to Southbank’

On the plane crash of 1926, visiting royalty in 1926, the start of football barracking, the first MCG, Harry Houdini and the Great Blondin, the arrival of electric tramways, and much more. what it takes to join, then this event is for you.

Date: Wednesday 26 April
Time: 7.30PM
Venue: Assembly Hall Boyd Community Hub - 207 City Road, Southbank

Robin Grow
President of the Art Deco and Modernism Society of Australia

For more details of the talk go to www.southbankresidents.org.au

Organised with the assistance of a City of Melbourne Community Grant

The company bringing giant creatures to life through animatronics

Creature Technology CEO and design director Sonny Tilders and his team might all have a rightful claim to the title of world's best job.

WORDS BY *Sean Car*
BUSINESS

As self-proclaimed “creature makers”, it is their responsibility to create giant lifelike robotic puppets in the form of dinosaurs, dragons, apes ... the list goes on!

Serving some of the biggest large-scale productions around the world from arena tours to theme parks, Creature Technology is in a league of its own when it comes to scale and quality of animatronics.

And while many would assume such specialised innovation might take place in a country such as the United States, home to many of the world's biggest theme parks and productions, Creature Technology does it all here in Fishermans Bend.

Formed 15 years ago by Mr Tilders and renowned Melbourne businessman and founder of Jayco Australia Gerry Ryan, the multi-award-winning company has risen to become the world leader in its field.

As a strategic partner of Universal Creative, the development arm of Universal Parks and Resorts based in Orlando, Florida, many of Creature Technology's creations can be found in theme parks across the US.

During the past few years, despite the challenges of a global pandemic, the team provided Universal Beijing Resort's *Jurassic World Adventure* with the dinosaurs needed to chase and swipe at visitors!

It also supplied the flying dragons necessary for the Beijing venue's live arena show *Untrainable* as part of DreamWorks Animation's beloved *How to Train Your Dragon* franchise.

Both projects each won industry awards in 2022 for best attraction and best live attraction, respectively – a source of great pride for Sonny Tilders and his talented creature makers.

“I'm very proud of what we do. It's pretty unique,” he said. “No one really would imagine that a company like us exists – I think we're unique on a world stage let alone the local stage.”

“There are not many companies that would have this integration of technology skillsets and creativity and scale. And I think that's the other thing – it's all done under one roof.”

The story of Creature Technologies began in 2007 after Mr Tilders was approached to set up the design and field team for what he described as an “ambitious arena theatre production” of the successful BBC television series *Walking With Dinosaurs*.

He and his team were tasked with developing ways to create “large, highly realistic” versions of the famous dinosaurs featured in the original series, and ultimately did so with great success.

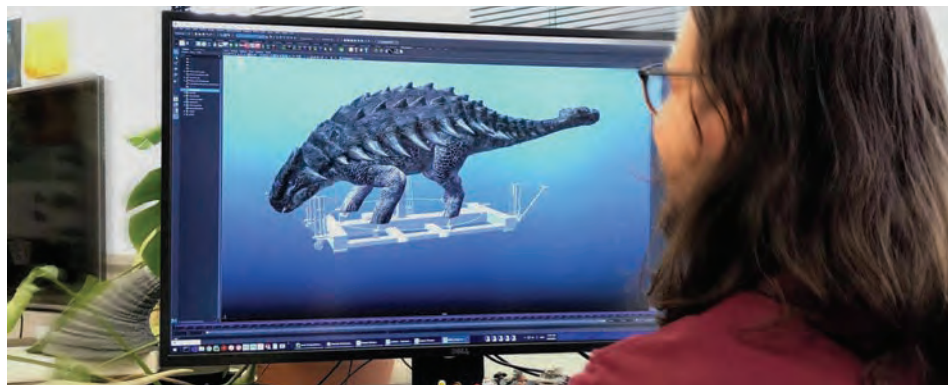
The production, which performed over several years at venues around the globe such as Madison Square Gardens and Rod Laver Arena, became the world's most successful touring show for two years running, outselling major acts at the time such as Madonna and U2.

This led to Mr Tilders, backed by business partner Gerry Ryan, to form Creature Technology – an organisation which today boasts a “wonderful melting pot” of 90 staff members with a diverse range of skills, from mechanical engineers, welders and software developers to sculptors, painters and costume makers.

It's this incredible mixture of talent that has allowed the company to keep pushing boundaries and carve out its own unique position in the global market, all from its unique location in Fishermans Bend.

“They're usually very large creatures and we've kind of cracked the code, so to speak,” Mr Tilders said.

“Such is our reputation now, our clients are all international with some exceptions, and they seek us out here on the other side of the world – we're not exactly in the epicentre of these things. They really can't find anyone else to do them.”



So, what does the process of building a gigantic, realistic dinosaur or dragon look like?

While every project is of a different scale, Mr Tilders said those which were more complex, such as the dinosaurs and dragons created for Universal Beijing Resorts, were “multi-million-dollar, multi-year productions”.

It all begins with a rough creative idea from the client and the team at Creature Technology gets involved very early in the process to help shape the vision, with its digital department developing all pre-visualisation and physical forms.

“We do a lot of work digitally before we even move across to the more technical engineering side of it,” Mr Tilders said.

“A lot in the team [digital department] are

ex-film, computer graphics [specialists], so they're very familiar with animating creatures, but we have to train them to think of the animated creatures as having an actual physical life ultimately.”

Next, it's onto the mechanical design team. According to Mr Tilders, this team is charged with the responsibility of configuring all the creature's movements from its pace to its acceleration and so forth.

Then, it moves onto the electrical engineers who focus on issues such as motor sizing and hydraulics before the control systems engineers essentially integrate the creature's “brains into the system” to ensure viable and safe operation.

“I'd say the first half of a three-year project is purely design,” Mr Tilders said. “Not a single bit



of steel is cut.”

“Then we produce shot drawings, and it goes out to the floor to do all of the very precise welding and fitting and turning and machining.”

But while shape, movement and control are essential elements to making a creature appear as a life-like as possible, it's the external features that are critical to completing the overall vision.

From sculpting plasticine to mould silicon skins, to making muscle structures out of bags of stretched netting and styrene beans to stretch and contract underneath to allow that same skin to behave in a real manner, the team goes to extreme lengths in pursuit of perfection.

Once all of those layers are placed on top of the mechanical structure, it then goes through a journey of rigorous testing to ensure its reliability, while very specialised service manuals are compiled for the client.

In comparing one of its creatures to your typical Ford Territory, where there is little to no difference between one of its various annual models, Mr Tilders said “everything we do is so different each time”.

“We have to provide, essentially, a manual of how to service and repair these creatures for 20 years,” he said. “So, while you're making a one-off, you need to provide a service manual, almost as if you need to design a dinosaur to be maintained the same as a Ford Territory.”

“People don't realise how onerous it is to make something that's so reliable and so safe. They won't collapse on someone. These things run 16 hours a day continuously, 365 days a year. And if they have a stoppage, they have to offboard people.”

Creating something different with each new project meant Creature Technology was constantly on “that leading edge” when it came to innovation, according to Mr Tilders, who said the whole team got a “real kick out of doing something that's unique”.

“I'm so proud of the achievement of the team. We all are. Without that sense of ownership and pride in what we do it would just be another business,” he said, adding, “it's stressful though, I won't lie! The deadlines are pretty severe.”

As for its Plummer St location in Fishermans Bend, he said it was vital for the company to have a design, manufacturing and technology driven facility close to the centre of Melbourne's CBD as a “hub” for its staff.

And while not heavily across the current planning work shaping its surroundings in the precinct, Mr Tilders referenced a couple of driving forces underpinning the vision that aligned with its own future needs – collaboration and connectivity.

“We could have set out in South Dandenong, but getting some people from Geelong, Brunswick ... it's such a verified space we work in. The Fishermans Bend precinct represents one of the last hubs for businesses like us to operate in – that is centralised, not regionalised. That's why it's important for us,” he said.

“When Holden was here, we co-mingled with some of their design team. We had a bit of a collegiate relationship with them – that was really nice. It would be great if we're able to work alongside some of other innovate companies.”

“But, even to have a tram would be great!” ●

For more information:
creaturetechnology.com

OUR BIG GREEN CITY HOW WE'RE TURNING GREY TO GREEN

Melbourne is a city of green possibilities - green roofs, green laneways, more trees, more plants and more green space.

At the City of Melbourne we're passionate about turning grey to green and making Melbourne one of the greenest cities in the world in which to live, visit and do business.

We've been working hard for 10 years to create a big, green city.

We were one of the first cities in the world to launch our Urban Forest Strategy in 2012, now we're half-way through.

Did you know that over the past decade we've planted more than 47,000 trees?

And that our urban forest is made up of more than 78,000 public trees across the municipality?

Not only is a healthy urban forest vital for the wellbeing of our community, trees help cool the city and help mitigate against the impacts of climate change.

So we're planting a diverse range of species, such as the Chinese Parasol Tree (*Firmiana simplex*) and Pau Ferro (*Libidibia ferrea*), to improve the resilience of our urban forest.

With all the extra trees, we have a canopy cover of more than 25 per cent,

so we're well on our way to achieving our goal of 40 per cent canopy cover by 2040 and a greener, cooler city.

Our Urban Forest Strategy guides our work and we continue to seek community feedback on important issues like our Urban Forest Precinct Plans, tree maintenance and water management.

We want Melburnians to be a driving part of our city's greening efforts.

We already have more than 700 Citizen Foresters who help collect data about the urban forest.

Join us on our campaign to continue to grow Our Big Green City.

Plant a plant. Take a photo to share on social media using [#OurBigGreenCity](#)

Join us at our upcoming community workshops, read more about our Urban Forest Precinct Plans or let us know your thoughts via our online survey at participate.melbourne.vic.gov.au/urban-forest

Learn more about what we're doing to see Our Big Green City thrive in this special feature.

#OurBigGreenCity

ADVERTISEMENT
Your City of Melbourne community update

GREENING THE CITY FROM THE GROUND UP

We're on a mission to turn more grey spaces to green.

While Melburnians have embraced green infrastructure, with green roofs, walls and facades sprouting across the city, there's still so much more we can do to improve new buildings or retrofit.

The possibilities for city greening are the focus of our Canopy Green Roof Forum, a City of Melbourne initiative that showcases the best urban green infrastructure and city greening projects, strategies and initiatives.

There are lots of great urban greening projects to learn from and knowledge that can be shared.

Our Canopy Green Roof Forum aims to showcase to building owners, tenants and community members how they can easily green their rooftops, balconies, walls and facades with lush green plants.

Green infrastructure is vital for cities, just as important as roads and public transport to the health and wellbeing of the community, providing more vegetation and green spaces in a dense urban environment.

The visual appeal and the myriad ways of greening and cooling the city all contribute to making our urban environment much more desirable.

Plants and trees provide clean air, clean water and increase our resilience to the impacts of climate change.

To keep up-to-date with future canopy forum events or subscribe to our newsletter visit melbourne.vic.gov.au/canopyforum



Councillor Rohan Leppert plants the first of 3000 trees for 2023 with David Callow and Matthew Forster



Fall in love with our leafy laneways

We've transformed some of Melbourne's iconic laneways into lush green spaces for everyone to enjoy.

Greening projects are an important part of the work we do to adapt to climate change and cool the city.



Visit Guildford Lane to experience urban tranquility

Here are four leafy laneways to explore.

Guildford Lane

Wander down this quirky laneway between Queen and Sutherland streets to spot greenery flourishing in pots and window boxes, and climbing up the buildings' drain pipes.

Meyers Place

A striking green wall with 80 species of plants is the jewel of this laneway between Bourke and Little Collins streets. Pause to enjoy the contrast between vibrant greenery and the towering metallic skyline beyond.

Coromandel Place

Stunning Boston ivy against historic red brick makes this laneway off Little Collins Street extra charming.

Katherine Place

This foodie precinct near Melbourne Aquarium has turned over a new leaf, now boasting street trees, gardens and lush greenery in planter boxes and pots.

Our Green Your Laneway program was the first of its kind in Australia when it launched in 2017.

Each laneway trialed different greening approaches.

After five years of growth, we've evaluated the success of the laneways and identified the best ways to encourage more community-led greening.

We have established incentives and opportunities for the community to green their laneways effectively, including the Greening Melbourne permit system and through the Green Your Laneway stream of the Urban Forest Fund.

Learn how you can green your laneway at melbourne.vic.gov.au/greenlaneways



HELP US GO GREEN

Help us plan the future of tree planting in your neighbourhood.

Join us at our community workshops to learn more about our Urban Forest Precinct Plans:

1 April - South Yarra, St Martins Youth Arts Centre, 10am - 2pm

29 April - CBD, Zinc, Federation Square, 10am - 2pm

13 May - Carlton, Melbourne Museum, 10am - 2pm

For more information and to register your interest visit participate.melbourne.vic.gov.au/urban-forest

KEEP IN TOUCH

To stay connected with all the latest news from the City of Melbourne, follow us on social media and subscribe to *Melbourne News* at news.melbourne.vic.gov.au

Connect with us

[/cityofmelbourne](https://www.facebook.com/cityofmelbourne)
[@cityofmelbourne](https://www.instagram.com/cityofmelbourne)
[@cityofmelbourne](https://www.twitter.com/cityofmelbourne)



ADVERTISEMENT
Your City of Melbourne community update

HONOUR A HUGGABLE TREE

Learn about our Exceptional Tree Register and how you can protect our urban forest for future generations.

We've just added 108 special trees to the Exceptional Tree Register, which means a total of 268 trees are now protected from being removed or significantly pruned.

These trees are on privately owned or managed land and include those of outstanding size, old age, outstanding habitat value, Aboriginal association, curious growth form, significant environmental services, among other exceptional criteria.

Trees are nominated by the community and then evaluated by an expert panel.

You can nominate any tree on private land within the City of Melbourne. This could be trees in private backyards, residential communal gardens, schools and universities - we even have exceptional trees at some of our favourite places to visit like Melbourne Zoo, Melbourne Showgrounds, Melbourne Museum and Yarra Park.

Listed trees are protected under the Melbourne Planning Scheme and a permit is needed to remove them or to undertake works that might affect their health or condition.

Next time you're out and about, check out these exceptional trees:

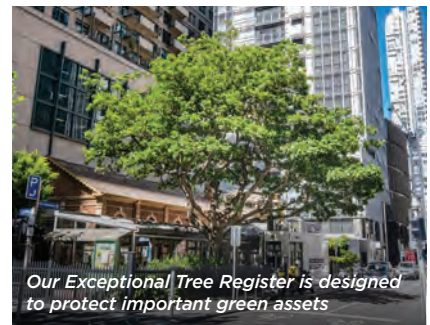
Tree 176 River Red Gum (*Eucalyptus camaldulensis*)

This tree in Yarra Park is a living Scarred tree with Aboriginal significance and is likely to be about 300 years old. The scar on this River Red Gum was created when the Wurundjeri Woi-wurrung peoples removed bark to make canoes, shields, food and water containers, string, baby carriers and other items.

Tree 170 Port Jackson Fig (*Ficus rubiginosa*)

Attractive for its curious growth form, this Port Jackson Fig is perched atop a stone wall at RMIT University with long aerial roots draped down metres to the ground.

To see which trees made the list or more information about our Exceptional Tree Register and nomination process visit participate.melbourne.vic.gov.au/amendment-c379



Our Exceptional Tree Register is designed to protect important green assets

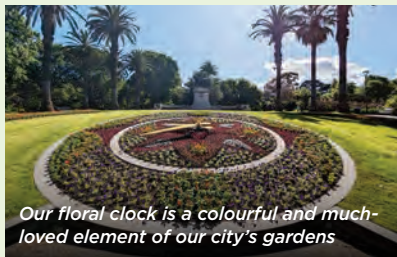
KEEPING OUR PARKS CLEAN AND GREEN

Melbourne's open spaces range from the major parks and gardens that define our city with classic 19th century heritage features and majestic tree-lined avenues; to the 170-hectare Royal Park with its unique bushland landscape and wetlands habitat, as well as smaller neighbourhood and local reserves.

With a network of some 480 hectares of internationally acclaimed parks and gardens, there is the perfect patch of green space to suit everyone.

To keep our park assets clean and green, we invest \$6.5 million in our Annual Park Renewals Program.

This includes everything from renewing garden beds in iconic parks like Fitzroy and Carlton gardens to irrigation to keep our lawns green in summer. As well as updating and refreshing public toilets to improve user experience.



Our floral clock is a colourful and much-loved element of our city's gardens

BIOLITZ CITY NATURE CHALLENGE

Love getting up close to nature? Then we want you.

Help us discover and document the unique animals, plants and fungi that call Melbourne home.

We're documenting our city's plants and wildlife as part of the City

Nature Challenge, an annual global citizen science bioblitz event.

Join expert researchers, local community groups, families and students to unearth our creature secrets from Friday 28 April to Monday 1 May.

The bioblitz will provide us with a snapshot of the biodiversity in our neighbourhoods, and provide the community opportunities to help survey city biodiversity and increase connection to nature.



Help us survey our city's biodiversity at our BioBlitz events. Photo credit: Stuart Riley.

Sign up at participate.melbourne.vic.gov.au/bioblitz

Nuturing our nature

Cities are important places for biodiversity. They are home to a large number of species and considered 'hotspots' for threatened species.

Melbourne is a biodiverse region with 239 species of birds, 12 species

of reptiles, 18 species of mammals, seven species of frogs, more than 1500 species of insects, and 31 species of fish recorded in the past 20 years.

Cities around the world are developing greening initiatives to improve and protect nature in the urban environment.

Here in Melbourne, we recognise our responsibility to play an active role in protecting and enhancing nature in our city.

We're half way through our Nature in the City Strategy, a program to create healthy ecosystems and thriving biodiversity in our neighbourhoods.

From the soil with its underground fungi to the plants and animals, including insects, birds, mammals and frogs, our Nature in the City Strategy connects all parts of the ecosystem and clearly sets out the actions we need to ensure the environment our children inherit is richer than it is today.

Over the past five years, we've been busy.

We've achieved and passed our target to increase understorey habitat by 20 per cent - now at 26 per cent and rising.

We established a Gardens for Wildlife program so that residents can turn

their balcony, backyard, community garden, school veggie patch or green rooftop into a haven for birds and bees.

Our expert garden guides are on hand to help create wildlife-friendly habitats, even if there is only space for pot plants.

We've worked with the University of Melbourne to reintroduce a locally extinct species, the tiny, flightless Matchstick Grasshopper. Insects like grasshoppers play an important role in maintaining a healthy ecosystem and are an abundant food source for larger animals such as praying mantis, lizards and birds.

The Matchstick Grasshopper's population has dwindled in recent years due to a scarcity of suitable environments and an inability to relocate from one habitat to another.

To learn how you can get up close to nature visit melbourne.vic.gov.au/urbannature



Garden Guide volunteers visiting a Melbourne garden, inspiring private landholders to create space for nature in the city

Parks and gardens directory

Melbourne is world renowned for its parks and gardens.

To make it easier for you to explore our green spaces, we've created a free park and gardens directory to help guide your tour around the city.

Our interactive City of Melbourne maps provide easy-to-access information on park facilities including playgrounds, barbecues, dog off-leash areas and more.

Visit maps.melbourne.vic.gov.au



Explore one of city's parks and gardens today

Arts Precinct

The duo turning a piece of great American literature into Australian comedy gold

WORDS BY *Kaylah-Joelle Baker*

Chaotic comedy duo Lano and Woodley (Colin Lane and Frank Woodley) are back for this year's Melbourne International Comedy Festival with another epic adventure awaiting them. Performing in the Arts Centre Melbourne's Playhouse from April 11 to 16, the duo tackles one of America's greatest literary works, *Moby Dick*, in the hilarious style they are renowned for.

While not a production where you will necessarily learn anything about *Moby Dick*, Frank and Colin confirmed that the conflict that arose between the duo was something that all audience members would be able to relate to and laugh along with.

"The conflict between us is a really enjoyable place to play and the comedy just naturally comes out of that love-hate relationship," Frank said.

"That relationship of love and hate represents any meaningful relationship people have in their lives, because all those really important relation-



ships that make life worth living have a love-hate component to them and so it's something people relate to profoundly."

In true Lano and Woodley style, the basis of the show will centre around Colin's character being constantly badgered and questioned by Frank's inquisitive character.

While speaking on the production with *Southbank News*, Colin jokingly mentioned that he was the star, and Frank was the support act, to which Frank confidently added that it was an "honour and privilege to perform in Colin's shadow".

Colin and Frank first started performing together shortly after they met in 1986, while performing at Theatresports in Melbourne.

It was a time in their lives where they learned a lot about improvised comedy, refined their act, and first started performing at the Playhouse. Twenty years of success followed as they cemented themselves in the comedy scene, before announcing a national goodbye tour as a last hurrah to their act in 2006. But, after staying away for 12 years, they decided to relaunch themselves, and landed on the story

of Orville and Wilbur Wright who invented the first powered aeroplane.

"It was a metaphor for us trying to see if we could get our act to take off again, and we really enjoyed doing that period piece and having an already existing story to work from," Frank said. "Then Colin happened to be reading *Moby Dick* during lockdown and I got an image instantly of Colin as the crazed Captain Ahab, set on revenge against the white whale. And in a way I am like this force of nature and Colin's nemesis as I destroy his ego constantly, so I could see it working instantly for us."

Once deciding on their next assignment, the duo knuckled down and created their next act.

"It takes a lot of thought, rehearsal, time and lengthy discussions to perfect the story, and it's been very successful for us over the last couple of years, because we attract a wide age range ... kids love it, adults love it," Colin said.

"I'm not sure people are going to be thinking about the show for a week after, but for that time, it is a pure 60-minute escape from everything else. We will convince you the show should be called *Moby Dick* – by the end, you may think it's more like, 'Moby dickheads'."

Lano and Woodley's *Moby Dick* has been so successful during the past couple of years that it returns for this year's festival due to popular demand, but according to the duo, it is coming back even better. ●

comedyfestival.com.au/2023/shows/moby-dick

CRITIC

A set meal of Asian humour

WORDS BY *Rhonda Dredge*

The art of stand-up comedy was obviously far more demanding for this group of five entertainers than stepping up to a mike and telling a few jokes.

These were cultural commentators from Asia, here to analyse everything from food to customs as part of the Comedy Festival.

Even though parents were clearly causing most of the hassles for the young performers in *Best of Comedy Zone Asia*, there were a few swipes at Aussies.

For Sonali Thakker from India, who has just launched her first one-woman show, her father was the bane of her existence.

He was never phoning just to say, "hi", but always beginning with a piece of advice.

"Remember to talk to people more intelligent than you", he said recently. So, I hung up on him."

Worse still was her mother when she tried bridging the generation gap and posted "remove your bikini" under a Facebook selfie of her daughter. Sonali joined stand-ups from Singapore, Indonesia and Malaysia in what we might call a poignant and amusing take on cultural mores, and they were calling "a nice, delectable set meal". The ability to laugh at yourself is the crux of stand-up as performers search through their language banks to find the words that describe that awkward feeling.

While Sonali looked like a typical student in jeans and white joggers, Sakdiah Ma'ruff, the first female Muslim comedian from Indonesia, was in more traditional clothes and was doing it hard just being on the stage.

"I told my parents the show was a scholarship," she said. "I've been in 17 years of lockdown." Humour is big in India with most TV advertisements now relying on a laugh and even performers like Anriban Dasgupta with his movie star looks preferring the mic to the desk where he worked as a corporate salesman.

Both he and Sonali made clever use of this sole prop on an empty stage, the mic becoming a judo partner for Sonali's routine as she tried to



please her father and when there was feedback, a sign for Anriban that the Indian embassy was listening in.

"India is fast becoming the largest dictatorship," he said, looking around nervously with a sly smile.

The finale was provided by Douglas Lim, a prize-winning comedian from Malaysia, with his hilarious rendition of *Square Pegs*, a TV sitcom that is never sad enough for its Chinese audience.

He stole the show with his grovelling on the floor, self-parody, and lack of professional standing among the corporates who phone and want to employ him to tell a few jokes at their functions.

"Is that Duck-less Lim?" they say. They make me sound like a bad Chinese restaurant. Duck-less Lim. Duck-less Lim. A few jokes. It reduces my craft. This is the art centre not the joke centre. I hold a mirror to society."

Melbourne received a few digs as well from this intelligent crew. The city became famous in Malaysia during the lockdown when the virus was spreading despite quarantine because of the behaviour of the guards who "were taking off their clothes" instead of taking precautions.

Compere for the evening was Fakkah Fuzz, a Malay from Singapore, who added spice to this set meal of Asian humour with his digs at "uneducated" Malaysians.

All in all, *Best of Comedy Zone Asia* was an intelligent, edgy, and well-rehearsed show that did not depend on daggy and obvious audience participation.

Best of Comedy Zone Asia, Fairfax Studio, until April 23. ●

Loaded: The "deep passion project" premiering at Malthouse Theatre

WORDS BY *Kaylah-Joelle Baker*

Australian author Christos Tsiolkas' first novel *Loaded* is being reimaged for Malthouse Beckett Theatre this coming May, with director Stephen Nicolazzo at the helm.

As the director responsible for bringing the much-loved classic of *Looking for Alibrandi* to the theatre last year, Mr Nicolazzo said it was "really exciting" to be working with Mr Tsiolkas and playwright Dan Giovannoni on another iconic Australian story.

"Having this incredible opportunity to develop a creative relationship with my favourite novelist in Australia is a pretty extraordinary thing, and getting to watch him tackle his first novel again after all these years, as an adult, is really interesting," Mr Nicolazzo told *Southbank News*. Written almost 30 years ago, in 1995, *Loaded* follows the character of Ari who is a young 19-year-old who is restlessly searching for himself and ways to ease his loneliness.

He doesn't want to be gay or Greek, and he is trying to find an escape in Melbourne's nightlife.

"To me, *Loaded* will always be a love letter to Melbourne," Mr Nicolazzo said.

"It's a story about a young Greek queer man's experience of this city, and he is exploring his sexuality, his cultural identity, and looking for freedom in a world that is really against cultural difference."

"It's joyous, exhilarating, sexy, thoughtful, and angering ... and from the perspective of a 19-year-old guy."

After the novel was published in 1995, it was adapted into an award-winning film three years later, and then reimaged, with Malthouse Theatre, as an audio work in 2020 when the pandemic put a halt to the stage production.

And now, after the long wait, the creative team have really delved into the story and character through making it a solo work, with actor Danny Ball playing Ari.

This format allows for a deep dive into Ari's point of view and explores new storytelling avenues that couldn't be replicated in a novel or film.

"I went to Christos Tsiolkas and the playwright Dan Giovannoni, and asked what it would be like if we revisited *Loaded*, now that it had been



▲ Image by JM Tubera

30 years since he wrote it, and what it would be like if we had Christos retelling his story but set in the 21st century and having that queer elder voice and millennial generations voice coming through the character of Ari," Mr Nicolazzo said. "So, from that moment on, we played, we explored, and it's been five years in the making. I guess it's a deep passion project."

While the story explores Ari's mindset of wanting to escape, it also celebrates Greek culture and Ari's cultural journey. And the audience can expect to hear both Greek and English spoken throughout the play.

Loaded also relies heavily on an "incredible soundtrack", brought to life by composer and sound designer Daniel Nixon, to move the story onward, and to speak into Ari's ability to get lost in the music around him – making it a high-lighting addition between the honest and raw moments explored onstage. ●

Showing: May 5 - 28th, with the official opening night May 10th



How one photographer is sharing a strong message through their photos

WORDS BY *Kaylah-Joelle Baker*

Photographer Lewis Cook has one message to share through their work, and it's a simple yet important one, "be nice to autistic people". After being diagnosed with autism, Lewis felt a big shift in their perspective of what they wanted to do with their photography, telling *Southbank News* that they now wanted "to do research on autism and do it through photography, because it's such an invisible thing". The idea of going down the photography path was nothing new to Lewis, whose parents were both photographers, but seeing what the industry was like, and how quickly digital photography was changing it, did make Lewis wary of going down the same path. But, thanks to the confirmation from friends, Lewis realised that maybe photography was

something that they should be pursuing. "I moved to Melbourne from Brisbane, and I felt that if you don't study arts when moving to Melbourne, what else are you to do with your life," Lewis said. "So, I looked around for some photography degrees and I really liked the idea of PSC as a tiny university as it would be harder to fall through the cracks and become just another number." Now in their final year at Photography Studies College (PSC), it seems Lewis made the right choice. "The teachers have an amazing wealth of knowledge and industry skills, and I love the sense of community they bring because they go above and beyond," Lewis said. "My immediate shock when I joined was they really spoke about how it didn't matter what you shot on, it's about the photos you produce." This advice and support encouraged Lewis to really think deeper about what impact they want

their photos to have. Lewis' latest work is titled, "*i like your personality, thanks! it's a disorder!*", and it is a way for Lewis to creatively educate people about autism. "I really wanted it to be very tongue in cheek, and not serious. It's fun and funny, and a bit absurdist, and shows that while people with autism do funny and interesting things, they are still people," Lewis said. "They are really funny people and I wanted to bring acceptance to that. People can get really bullied, and it's a serious topic that needs to be talked about more, and I find the best way to get people accepting of it is through humour." Following this recent work, Lewis has big plans for the future, and hopes to delve deeper into this topic. "I am working on my next photo book for my folio project for this year and it's called *due to personal reasons i will be making microwave noises for the next three to five business days*," Lewis said.

"It's about self-stimulation and the special and niche interests that people with autism have a wealth of knowledge in, and I want to celebrate that side of things." Beyond the course, Lewis said they also want to create a box set of photo books that "take you by surprise when you open it". "Everything will be a bright colour and all the pictures will be weird. It'll be an absurd piece of media," Lewis added. But knowing Lewis' previous work and goals for their photography, it'll be absurd in the most intriguing way possible. ●

[instagram.com/alewisious](https://www.instagram.com/alewisious)
[website: alewisio.us](http://www.alewisio.us)

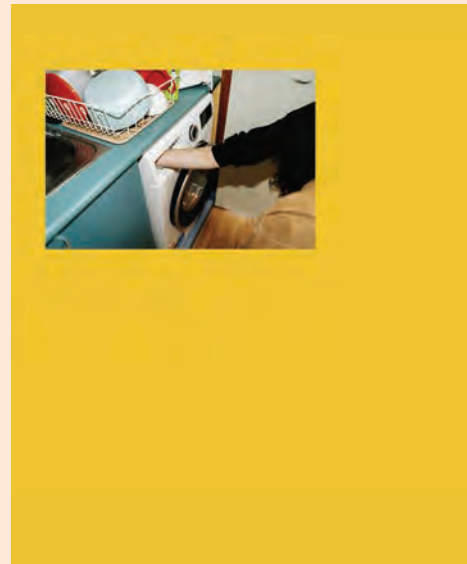
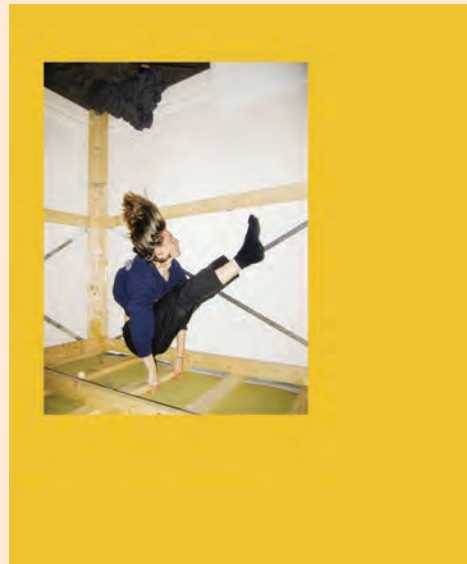
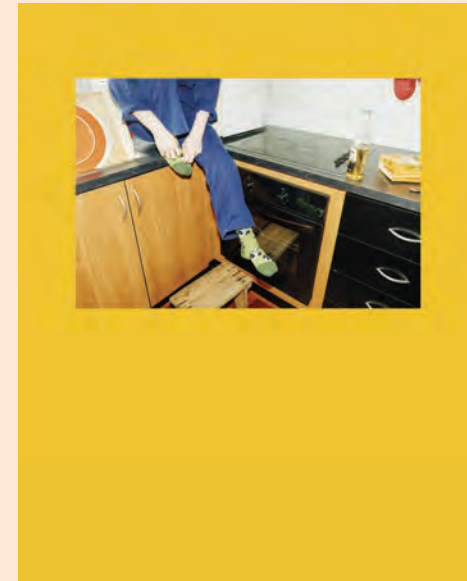
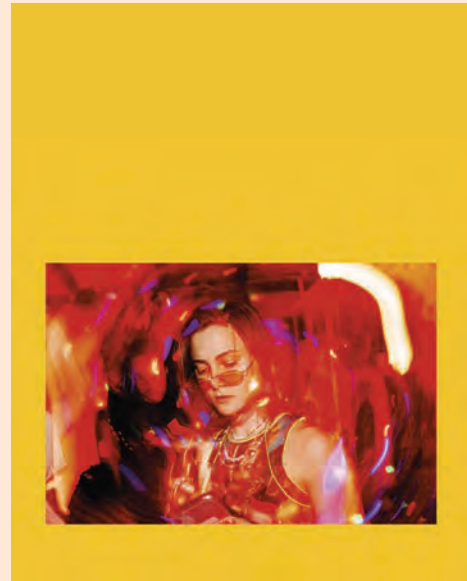
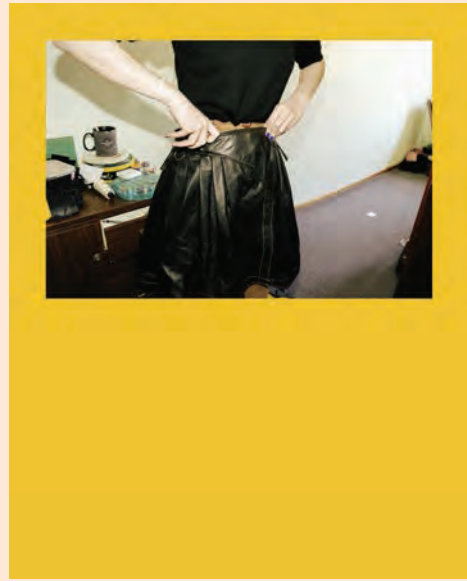


Image by Cathy Thunder

PHOTOGRAPHY STUDIES COLLEGE

OPEN DAY
SUNDAY 30 APRIL | 10 - 2

Explore our specialised photography campus

Discover our range of photography courses
 Meet our teachers, graduates and students
 Hear our alumni panel discuss their careers

Don't miss this exciting event

Register at psc.edu.au

✉ study@psc.edu.au or ☎ 9682 3191

PSC.EDU.AU
 ✉ study@psc.edu.au

☎ 9682 3191



Photography Studies College (Melbourne)
 is a division of Photography Holdings Pty. Ltd.
 ACN 099 525 305 | ABN 68 860 041 007
 CRICOS Provider No 00257G | TEQSA
 Provider No 12200 | RTO Code 0111

BUSINESS

Culinary marvel at Melba

WORDS BY *Jack Hayes*

BUSINESS

When it comes to hotel restaurants, few hold the fame and reach of Melba Restaurant at The Langham Melbourne.

The buffet overlooking Melbourne's beating heart and the Yarra River forms a memorable backdrop only matched by an incredible array of locally sourced produce and innovative dishes from around the globe.

From the show-stopping Seafood Harvest featuring a selection of Australian prawns, Tasmanian oysters and even butter-poached lobster, or the sushi and sashimi station with sake-infused abalone and local kingfish, to an Indian feast of tandoori pork belly and lamb rogan josh, there truly is something for even the most discerning palate.

Director of sales and marketing at The Langham Melbourne Andre Jacques told *Southbank News* by instilling an unwavering commitment to champion the best local produce, coupled with a team of long-serving and recognised chefs, Melba has become a destination restaurant of global notoriety.

"Much of our focus is centred on making sure our chefs have the freshest all items, but particularly seafood sourced either direct from the market or through local seafood providers," Mr Jacques said.

"Our buffet menu suits dietaries of all types, so, there is always going to be something for you, the only issue you will have is trying to figure out what to choose."

"As the seasons change, so too does our menu under the guidance of our executive chef Thomas Rappl and executive pastry chef Markus Bohm.



Melba's buffet dining experience of over 40 different dishes offers the perfect landscape for diners and multigenerational families; while you're off sifting through the choice of house-cured salmon or chargrilled tiger prawns, your kids will be enjoying the famous chocolate fountain.

Melba

With a literal smorgasbord of dishes, it would be easy to become overwhelmed by the choice, but with friendly staff on hand, all you need to worry about is how to fit it all in.

Mid-week lunch, from Monday to Thursday will set diners back just \$85 per person, Friday

lunch will cost you \$95 and it's \$145 on the weekend.

"We have a special Easter Sunday lunch with Easter eggs and chocolates, and even an appearance from the Easter bunny for \$189 which includes a glass of champagne," Mr Jacques said.

"We will also be open for Good Friday with our Seafood selection an incredibly popular choice for diners."

"My suggestion is always to start with the sushi and sashimi and some seafood, then move on to the salads and some of the hot dishes. Yes, you can taste everything we have to offer, it's just a matter of fitting it in." After taking a round-the-world culinary

journey Melba's pasta, Asian street food or Indian stations, you'll land in sweet tooth heaven with fresh fruit, crème brûlée, lemon meringue and tiramisu just a small selection of the crowd favourite desserts.

Melba Restaurant is located within The Langham Melbourne at 1 Southgate Ave, Southbank. ●

For more information:
melbarestaurant.com.au

SAFETY AND SECURITY

Introducing Inspector Dale Huntington, the Situational Awareness Map and Operation NEXUS

Inspector Dale Huntington is the new Local Area Commander for Southbank and Melbourne East police service areas. Previous to this appointment, Dale's career has been in diverse policing roles, including operational uniform policing, investigations, public order, major events management, drug enforcement, public transport safety, traffic management and liquor licensing.



Grand Finals, International Cricket, and many large Victorian community events and festivals.

As the Local Area Commander for the busiest and highest profile area in the state, Dale is excited in leading an experienced and highly motivated team of leaders and personnel, to work in partnership with stakeholders, resident groups, the City of Melbourne, and state government, to develop inner-city safety initiatives for all residents, students, visitors and working residents, which will contribute to Melbourne being a safe and livable city.

The Situational Awareness Map

Victoria Police has a new investigating tool to allow its members to investigate crime in a timelier manner.

The Situational Awareness Map (SAM) gives Police the ability to record CCTV locations across Victoria and send a link to owners to provide CCTV electronically. This allows members to obtain more images of offenders, increasing the likelihood of identifying and capturing offenders.

SAM is rapidly increasing in size and capabilities and has hundreds of businesses and body corporates sharing intel to drive down crime across the state.

If you have a home CCTV system, a business with CCTV or a residential apartment complex with CCTV, please assist in driving down crime by sharing the details with Southbank Police Station. Simply email SOUTHBANK-UNI-OIC@police.vic.gov.au with the number of CCTV cameras and the area they capture (including street names) enabling the details to be added.

This also helps save time for the community as it will save police members physically attending to canvass for CCTV cameras to see what is available.

Southbank Police Station thanks you for getting involved and making the community a safer place.

Operation Nexus

This operation will be conducted over the Easter long weekend from 12.01am Thursday, April 6 until 11.59pm Monday, April 10. Operation Nexus will be conducted throughout all operational police regions and police service areas (PSAs) during the five-day period.

A key focus of Operation Nexus is to maintain a visible and active police presence on Victorian roads to act as a deterrent against unsafe road behaviour.

The operation will target drug and alcohol impaired driving, speed, fatigue, distraction, vulnerable road users and unauthorised drivers.

Please be safe during the Easter break. Happy Easter, to all our readers. ●



Senior Sgt Alex O'Toole

STATION COMMANDER AT
SOUTHBANK POLICE STATION

SOUTHBANK-UNI-OIC@POLICE.VIC.GOV.AU

Southbanker

Colin's warm smile and local knowledge helps others find their way around the city

“

Colin Gunther loves nothing more than helping locals and visitors alike find out about the “delights of our fantastic city centre”.

”

WORDS BY *Brendan Rees*

The Southbanker is one of many friendly and approachable City Ambassador volunteers who can be seen dressed in their distinctive long-sleeved red tops and wide-brimmed hats around the CBD as they help passers-by with directions, public transport enquiries, events, attractions, and more.

Colin stands at various street locations, but mainly at Bourke Street Mall (where the Melbourne visitor information booth is located) and Federation Square and, until recently, at Station Pier to welcome cruise ship passengers arriving in Melbourne.

“Enjoyment is in helping the people who approach us to find out what is on,” he said, adding it’s “very satisfying especially when they come back later and say ‘thanks.’” “There is also the enjoyment in being with the other ambassadors discussing their passions and interests” with



▲ *Colin Gunther loves to share his local knowledge with the public.*

some travelling from as far as Forest Hills and Chadstone to “do the streets”.

Colin has been a City Ambassador for three years after a friend mentioned the City of Melbourne’s tourism team was recruiting, and he decided to go along to an information session to find out more about the program.

“I have lived with my husband in Southbank for 20 years, so I have seen the city change with

new shopping areas, a new variety of restaurants and cafes open/close and open. Recently there has been a great rebirth and it’s a pleasure to help even locals to discover our city again.”

Colin said a base roster consisted of one shift of four hours per week but, being a local, he often chose to do extra plus the cruise ship roster – which he expected to do over Easter.

Asked what his tip was for the best café to

visit, Colin said as an ambassador they cannot specify any one café, however “there are a couple of good cafes in the Kavanagh St area as well a trip to Degraves St or Hardware Lane”.

He encouraged anyone curious about volunteering to stop and say hello to the City Ambassadors, as they were more than happy to talk about the role and how to apply.

“There is quite an extensive training program as well as ongoing questionnaires that are answered by walks around various areas. The management team is amazing and supportive and the City of Melbourne is so all-inclusive no-one feels uncomfortable.”

Colin said potential volunteers should also not be daunted by finding their way around the city.

“Navigating the city is easier for me as it is my local shopping district, however, just walking around, answering visitor questions, along with passing out the street walks and maps, it’s a constant learning pattern and is amazing what is hidden within Melbourne’s lanes and upper levels of buildings.”

He added one of the better things within the program was the support and management team who help “create the camaraderie between all the volunteer ambassadors and have a lot of product knowledge to help us on our way”. ●



Brendan Rees
JOURNALIST
BRENDAN@HYPERLOCALNEWS.COM.AU

METRO TUNNEL

Metro Tunnel artwork brings country to canvas at City Square

A new mural along the Metro Tunnel site fence at City Square is bringing the natural world to the bustling city.

The vibrant mural, entitled *Karrap Karrap Beenyak Mundi-gurrk/ Baskets of Knowledge*, features a series of dilly bags – traditional Aboriginal woven bags – containing Indigenous plants.

Artist and proud Waddawurrung woman Dr Deanne Gilson said her work connected people with Dja (Country) and drew upon the traditional knowledge of her ancestors. “It brings you back to appreciating Country,” Dr Gilson said.

The work depicts Indigenous plants from healing plants to bush tucker.

“They’re all Indigenous plants, they’re not plants people have had to go and buy in a nursery. They’re free, just out there in the environment if you look hard enough.”

The dilly bags and baskets are drawn from the south-eastern collection of artefacts held by the Melbourne Museum, and gifts from family and friends in an ode to her heritage.

“Our ancestors were basket weavers. I don’t know if our bodies



have that DNA knowledge embedded within them, but for some reason we all keep coming back to the same thing,” she said.

Dr Gilson’s mural is based on her original paintings, which use ochre, charcoal, 22-carat gold leaf and acrylic on canvas.

The ochre was found by Dr Gilson

herself, so she has truly brought Country to canvas.

“I’ve been collecting all these ochres and finding out where to get ochre from. Sometimes you have to go in the bush a little bit to get some of the colours,” Dr Gilson said.

“The sap is like super glue when you melt it down and you put that

with the ochre, so it seals it and stays on the canvas.”

The charcoal used by Dr Gilson also represents a connection between her family and Country.

“I don’t have a fire, but my mum and sister have wood fires so every time they light a fire I ask: ‘Can you send me a bag of charcoal first?’”



The mural is one of the latest installations as part of the Metro Tunnel Project’s Creative Program. ●

For more information:
metrotunnel.vic.gov.au

Faces of Southbank



“

What will you be doing over the Easter break?

”



CHRIS AND ELLA

We're Southbank locals, so I think we'll probably just stay here and see what's going on. We may head to South Melbourne Market, which is a favourite spot of ours to visit, or go to the Victoria Gardens.



LALITHA

We're planning to head to Fed Square to see if there are any activities. As always, they'll be some family time – my husband's parents live near us, so I think we'll see them for the break. Fingers crossed the sun is also out!



SHIPRA

Over the Easter break, I will be spending time with my friends and taking some time for myself as well. I'll catch up on reading, drawing, and watching Netflix.



ABHI

I'll be indoor rock-climbing and maybe find time for outdoor activities as well. As the weather is getting colder, I'll rug up, put on a jacket and have a big walk around the city.



AQILA

I'm a part-time student alongside working, so I think I'll be catching up on uni assignments! I'll also make time for family, and perhaps see if there's any Easter-related events in the city.

HISTORY

The Royal Melbourne Show – it took off in Southbank!

One of Melbourne's long-standing cultural, agricultural and industry highlights is the Royal Melbourne Show, held each September at the showgrounds in Flemington. The highly successful event reflects the importance of the agricultural sector in Victoria.



For many years, the people of Melbourne enjoyed a public holiday for Show Day, which was unfortunately discontinued in 1994. The showgrounds have been redeveloped on a number of occasions and at one stage were proposed as the site for the Melbourne Olympic Games in 1956.

But an early site for the Show was in today's Southbank, facing St Kilda Rd and in the area bounded by Dorcas and Coventry streets. The show was held under the management of the National Agricultural Society of Victoria (now known as Royal Agricultural Society of Victoria), formed in 1870 with the intention of improving agricultural practices to meet the needs of a steadily increasing Australian population.

The newly formed society set up a new show site in Parkville before relocating to the St Kilda Rd site, with the first show in 1871 on land previously set aside by the government for largely agrarian events.

The show made a loss for the first couple of years but there was continuous progress in the development of the agricultural, pastoral and industrial resources of the colony. In 1876, the Society's annual report recorded that the

displays were the best yet shown in the Southern Hemisphere and takings would have been much higher except for the state of the grounds.

Highlights of the show at this site included events such as displays of machinery and simple implements, (from knife sharpeners to steam engines), single and double furrow ploughs, buggies and harnesses, and reaping machines, together with dairy produce and a sheep shearing match, with 40 shearers competing.

But the existence of the show in this location highlighted the tension between ownership (or occupancy) of public land and the need for continued development of private property, which attracted rates.

The prospect of a Crown Grant for the site was bitterly resented by the local council, who had to maintain roads (plus footpaths) around allotments from which no rate revenue was derived.

The council made regular representations to the government where they argued against issuing a Crown Grant for the site, eventually convincing them to notify the trustees of the National Agricultural Society that a Crown Grant would not be issued. However, they undertook to find an equally suitable site for the society in another suburb.

The show moved to Ascot Vale in 1883, where shows are held to this day, and the

National Agricultural Society became the Royal Agricultural Society, which is celebrating its 175th anniversary this year.

But, once again, we see that a major Melbourne event took off in Southbank. ●



Robin Grow

PRESIDENT - AUSTRALIAN ART DECO AND MODERNISM SOCIETY
ROBINGROW@OZEMAIL.COM.AU

HYPERLOCAL reels
A Hyperlocal News and 31 collaboration

Need a *unique video* that speaks community for your local business? **We got you!**

Get in touch with our team today to help get you started:
admin@hyperlocalnews.com.au

SOUTHBANK 3006

So, what is it about Southbank3006?

On Sunday, March 12, The Age had a four-page spread titled Game Changer. It asked several learned and well-known architects and urban planners about their views on how recent buildings in Southbank and the CBD had changed the skyline.

WORDS BY *Trisha Avery*
SOUTHBANK3006

They made both positive comments about the external design of some of these buildings and negative comments about the lack of ground-level community activity.

I wonder how many of these professionals live in Southbank, have lived in high-rise strata buildings, and have engaged with the community, both inside and outside their buildings. Indeed, I wonder how many visit our suburb, aside from river dining and the theatres and galleries ...

The main concern of those quoted in *The Age* article was that there was little, or no community life at street level, and their concern that no one looked up to admire the buildings. They asserted that pedestrians and residents only focused on eye-level.

I would question this. Firstly, as most of us live in high-rise we are acutely aware of building design; we look at it every day.

Secondly, one only has to look at Boyd Park to note the wealth of community interaction, where so many families gather together for the playground, barbecues, and kicking a footy on the grass.

And, of course, the mighty Southbank Sustainability Group holding its regular gardening get-togethers growing herbs and vegetables for residents. I, for one, am delighted to pick chives and parsley from the community garden.

The barbecues and basketball court were a huge drawcard, and we certainly need many more of these facilities and amenities throughout Southbank. We do need to be aware that noise and light is a constant challenge across Southbank as our event on March 26 highlighted. Noise and light, including from public

amenities, challenge the lives of many residents across Southbank.

Until recently such issues were dismissed as "inner city living". But we are heartened that the council is starting to address these issues as both the Lord Mayor and the Deputy Lord Mayor have twice referenced at recent Future Melbourne Committee meetings, flagging that residents in the inner city are entitled to be able to live without disruption to their daily life, work, or sleep.

Whether it is the National Gallery, hospitality venues, a basketball court, or garbage removal, all need to be operated and designed to minimise the impact on residents' liveability in terms of noise and light.

We at Southbank3006 know that community is everything; it not only attracts people to live, rent and buy in Southbank, but is an essential factor in retaining long-term residents and businesses to drive Southbank's economy of the future.

Founders of our community group have between us more than 30 years of living, working, and engaging in the community of our great suburb. We know how important it is to build community in every precinct of Southbank.

And although we are often focused on the Kavanagh St/City Rd precinct (as that is where most of the significant traffic challenges are), we very much want to hear from all the precincts, from Whiteman St to the Arts Precinct and to those of you living along the river.

Please tell us about your community, how do you engage with each other? What is the dominant economy in your precinct (other than arts and hospitality)? Would low-traffic neighbourhoods assist street level activity? And how can we help?

Southbank3006 committee is a group of dedicated, hard-working volunteers. We strive to create a vibrant Southbank community across all precincts, we organise monthly community events (mainly at Boyd Community Hub) and we welcome you to not only join our group, but to actively engage with us through our Facebook and Instagram pages, @Southbank3006. We also produce a monthly newsletter and engage with as many of the buildings as possible.

Thank you, dear readers, for your attention to our Southbank3006 column and we look forward to seeing you at our monthly events and our community engagement program throughout 2023. ●

WE LIVE HERE

Aurora-gate exposes inadequate laws

The battle for the owners' corporation at Aurora Melbourne Central has underlined the woeful inadequacies of Victoria's strata laws and VCAT tribunal system.

The Aurora building, with a staggering 1000 apartments over 85 storeys, has been the centre of allegations of abusive, threatening behaviour, harsh rules and unlawful fines. The internet has been deluged with video evidence of ugly physical arguments in the corridors and lobby.

At the core of the dispute is the issue of proxies. In an extraordinary turnout, 200 owners logged onto a special general meeting to challenge the incumbent chair – only to be stymied by an astounding volume of proxies.

Residents have complained to Consumer Affairs Victoria and state politicians, only to be fobbed off and told it is a civil matter.

We have grave concerns that the Aurora-gate debacle may become the paradigm for apartments across Melbourne. Our contacts



in the industry tell us that many unscrupulous committees are exploiting the legal vacuum to breach strata laws and regulations with impunity.

If the Aurora mess had been in NSW or Queensland, those states' VCAT equivalents

would have stepped in and appointed a manager. Why can't this happen in Victoria? Perhaps because the Victorian Government seems to be committed to inertial indolence when it comes to legislative reform.

Last year the government introduced oddly timid laws that limit proxy holdings to five per cent. A chairperson would only need three supporters to subvert that intention if 20 per cent of the owners turn up to a meeting.

We Live Here can help apartment residents and owners build awareness about the problems exacerbated or caused by government inaction. If your building has a stacked committee or you are concerned about mismanagement or malfeasance, please contact We Live Here privately – details are below.

A public review of the *Owners Corporation Act*, first promised by the state government for 2021, was never conducted. The review is now vaguely slated for "sometime between 2023 and 2027". Victorians deserve better.

Green pressure Labor on short stays

"Short stay accommodation is almost entirely unregulated in Victoria, and it's making the rental crisis worse."

With this opening salvo, Greens spokesperson for renters' rights Gabrielle de Vietri

MP announced a new campaign pressuring the Victorian Labor Government to introduce short-stay regulations.

Ms de Vietri went on to say, "We need to introduce strong short-stay regulations to ensure affordable housing is available to families and workers experiencing housing stress. Cities around the world like New York, London, and Berlin regulate their short-stay market, it's time for us to do the same."

The Greens propose:

- A 90-day cap on how many nights a year you can rent out an entire property as a short-stay.
- Allowing owners' corporations to regulate short-stays for properties of absentee owners.
- A new mandatory public register of short-stay operators.

We Live Here applauds the wider socioeconomic view being taken by the Greens. ●



Barbara Francis & Rus Littleton

LEARN MORE: WELIVEHERE.NET



INCREASE COMMUNICATION IN YOUR OC

CommVision provides a sustainable and seamless way for Managers, Council, Police and the local community to communicate with Residents.

By installing media screens in lifts and lobbies, Our platform will upgrade your building and keep your Residents fully informed of:

- Important building notices;
- Latest news;
- Community events;
- Local deals.

Our touchscreens provide a fully interactive experience and are complimented with a bespoke Residential Managers portal that delivers pre-made templates for the Manager to design and schedule notices in advance. Our operating system is cloud based, enabling Management to remotely update notices seamlessly at any time of the day.

Empower your Manager today and contact our team on info@commvision.com.au **03 9863 7552** to find out how you can upgrade your building.

Warm Regards,
Your friendly neighbourhood Communication Platform Provider

COMMVISION

CommVision.com.au

OWNERS' CORPORATION LAW

New building laws to clean up the industry

Last month, the Victorian Parliament introduced the Building Legislation Amendment Bill into the lower house, seeking to substantially amend the Building Act 1993 and the Architects Act 1991 by improving consumer protections for owners.

WORDS BY *Tom Bacon*
STRATA TITLE LAWYERS

The Bill seeks to adopt a number of reforms already implemented in NSW, by establishing a State Building Surveyor as an overarching gatekeeper for new buildings in Victoria. To support this new position is the creation of a Building Monitor.

These professionals will play a role in looking into systemic issues plaguing the industry and will provide input and direction to the Victorian Building Authority (VBA) to play an enforcement role, while the State Building Surveyor will be able to issue binding determinations relating to the technical interpretation of the Building Code and Plumbing Standards.

Another key component of these reforms is to adopt legislative change to amend the distribution of the cladding rectification levy, to provide financial or other support to owners who are not eligible to receive funding under the current program, which is administered by Cladding Safety Victoria (CSV).

The current legislation cannot authorise the cladding levy to be used to fund activities

where full rectification solutions are not funded by the state.

The amendments will provide greater flexibility in how the cladding levy is used, including enabling the use of the levy to provide financial or other support to address buildings that CSV have determined will not be eligible to receive funding under the current program.

This is about giving greater discretion, obviously within the purposes of funding cladding rectification works or trying to fix the cladding issues, in allowing to do out-of-scope things that might not be eligible for full funding, as the funding at the moment only looks at high-risk buildings.

Relevantly for owners' corporations (OC), there will also be a new requirement that a draft building manual be provided to the OC upon completion of the building. The manuals are intended to be a single repository of all relevant information relating to the design, construction, and ongoing maintenance of a building.

The building manual will address a significant hurdle for owners and OCs in accessing information about their building. By making information about the design, construction, and maintenance of a building more readily accessible, the building manual will aid not only owners and OCs but also other parties such as building practitioners and regulators in future.

In NSW, the Building Commissioner has developed a reputation as a tough, no-nonsense individual that will fearlessly champion the interests of apartment owners, and will use his legislative powers to issue court orders against recalcitrant builders and developers, and will cancel occupancy permits and de-register building licences when timeframes for rectification are not met.

In Victoria, this role for the State Building Surveyor has not been adopted, but I do hope that Victoria one day decides to give more power here. It is exactly what needs to occur in my view. ●

Pet's Corner



Hamming it up with Jamón

“

Whenever Monica and Javier frequent Boyd Park with their seven-month-old groodle, Jamón, he's usually the smallest in size, but the biggest in personality.

”

WORDS BY *Helena Morgan*

“It's crazy that he's a medium size – he's not even as big as groodles usually get!” Monica said.

Jamón is a bundle of fun, all golden locks, boundless energy, and a loveable nature. He's always willing to keep Monica and Javier on



▲ Javier and Monica with their groodle, Jamón.

their toes, yet he's a very spoilt and treasured pooch.

The couple are originally from Colombia but moved to Melbourne seven years ago, and recently decided to add a new member to their family. They bought Jamón from a breeder down on the Mornington Peninsula and have been incredibly happy with their young dog.

“Jamón” translates in Spanish to “ham”, however Monica and Javier also view their pup's name as a hybrid of their names, almost like a celebrity couple name – “Ja' and 'Mon' equals Jamon!” Monica said.

10 YEARS ON

Looking back at Southbank News - 10 Years On

APRIL 2013 | ISSUE 18 |

SOUTHBANK local NEWS

Buoyed by community response



▲ Green's Dairy Angel Ensemble perform in the afternoon sunshine for the crowd.

The first ever Buoyed @ Boyd community event was held last month at, you guessed it, Boyd Community Hub.

The centre opened its doors to the public, displaying many of its activities available to locals. The evening included poetry readings, live music, face-painting, children's reading (by a pirate no less) and a taco truck. Boyd community animator, Natalie Warren, said the event was a great success and the

response from locals had been extremely positive.

“All of my City of Melbourne colleagues were really enthusiastic about the turn out, level of engagement and response to the evening. There were lots of familiar faces, but also lots of newcomers too,” Ms Warren said.

“In addition to the City of Melbourne service providers, such as the Southbank Library and Maternal and Child Health, Buoyed @ Boyd was a fantastic opportunity to showcase groups that now are regulars such as yoga, tai chi and the Boyd craft group.”

The next Buoyed @ Boyd event ●

CBD NEWS

Wish your inbox was more local?

Well we have good news for you!

Scan the QR so you can stay Hyperlocal on the eNews!



HYPERLOCAL NEWS

Sustainable transport guide for Southbankers

According to the Climate Change Authority, greenhouse gas emissions from transport have been increasing in Australia every year since 1990 (except 2020 as a result of the COVID restrictions). Road transport accounts for about 85 per cent of transport emissions or about 16 per cent of Australia's total emissions.

WORDS BY Maria Tarrant

Opportunities exist to reduce these transport emissions especially if you are commuting to work, study, or play, as is the case for many Southbankers. We have recently posted a guide on our Facebook page to help you make your transport choices more sustainable.

Residents in Southbank are lucky to have a diverse range of public transport options within easy walking distance, meaning owning a car is not essential for most people.

As Southbank Sustainability Group member Chris Jubb has pointed out in the guide, even with a carbon heavy electricity grid (which is becoming less carbon intensive over time) using public transport produces a lot less emissions per person than using a car.

Electric cars are becoming more common in Australia. It can be expected that this will also be the case in Southbank. As the grid becomes greener these cars will also be far less emissions intensive.

Residents in apartment buildings need to start asking their building manager or owners' corporation how they plan to accommodate the transition to electric vehicles.

For many Southbank residents, bicycles and scooters can also be a viable transport option with little or no emissions, however, if they are not ridden in a responsible manner, they put fellow commuters at risk.

So, if you are using a bicycle or a scooter follow the rules and stay off the footpaths so as not to give these clean and environmentally efficient modes of transport a bad name.

Last month, I discussed a range of matters

related to energy costs and environmental considerations. The City of Melbourne has work under way to provide residents with access to affordable renewable energy through a network of neighbourhood batteries around the city.

If you are interested in this project more information can be found at participate.melbourne.vic.gov.au/power-melbourne.

It has been great to hear from readers of this column that you are finding the discussion of different sustainability issues helpful. We are always keen to know what interests you. So, do email and let us know southbanksustainability@gmail.com.

It has also been great to see many new members at the Saturday meetups at the community gardens at the Boyd Community Hub. We will be meeting at 10am on April 15 and 29 for some gardening and to catch up. We look forward to seeing you there.

About the group

Southbank Sustainability Group is a solutions-focused community group of Southbank residents working to bring positive change in sustainability practices. Reach us at southbanksustainability@gmail.com or facebook.com/SouthbankSustainabilityGroup •



SOUTHBANK RESIDENTS' ASSOCIATION

Basketball ... here we come!

I am absolutely delighted to be able to report that the City of Melbourne has listened to the suggestion put forward by Southbank Residents' Association (SRA) last year to establish a temporary basketball court for the community at Melbourne Square.

of Boyd Park. Two-thirds of the respondents were against using any of this scarce green open space for a temporary basketball court.

Unfortunately, there are delays with the undercroft redevelopment which meant the affordable living residential development began before the undercroft was finished (in fact, it hasn't even started in this instance).

The reason why the basketball court was positioned where it was at Boyd as in the original plans it was proposed to have been located at the front of the library where the community garden is now.

SRA suggested the basketball court would be better positioned where it was as (at that time) the undercroft development was expected to be finished before the residential apartment complex.

I think the past location served the basketball court well, which allowed for a permanent space for the community garden. At the time, I think that solution served the community well, and it is a great outcome to now find another temporary solution to allow our basketballers to once again have a space to shoot some hoops.

Once this space is open to the community, your SRA committee has decided to hold Southbank's first basketball tournament to celebrate this great achievement. Watch this space and our Facebook page for further details once the basketball court is in operation.

Once again, I would like to remind our readers that our voice is only effective because of our members. Without membership we don't have a voice. If you would like to support the work of our volunteer SRA committee then you can sign-up via our website at southbankresidents.org.au.

It is a real pleasure to write a column when SRA is able to spruik a massive win it has achieved for the community. Thank you, for your support. •



YARRA RIVER BUSINESS ASSOCIATION

Southbankers reluctant to speak

It would seem that Southbankers are tongue-tied when it comes to saying what they want. An online survey designed to improve the range and style of food, beverage and leisure activities on offer to Southbank residents has attracted minimal response in its four months of operation.

The survey grows out of a key finding from a 2022 City of Melbourne survey that residents were wanting more appropriate hospitality choices than is currently available.

However, the follow-up survey run by the Yarra River Business Association, and backed by the City of Melbourne, has largely fallen on deaf ears.

Just over 10 per cent of the required response to make it statistically accurate have been collected since last November.

YRBA president Jeremy Vincent said the survey is a genuine opportunity for locals to tell businesses what they want.

"Rather than just providing a once-a-year dinner for a wedding anniversary, we want to present a suitably diverse range of food and beverage options, at appropriate price points, that can be enjoyed several times a week."

"The river strip has a very strong tourism focus, but COVID has shown that putting all one's eggs in the same basket can be catastrophic as a business model."

"In conjunction with the City of Melbourne's Neighbourhood Officer, we designed the survey to tease out details about leisure time activity

generally in the precinct." "It will complement the more urban design and neighbourhood planning focus of the council's earlier survey," Mr Vincent said.

The seven-minute survey, produced by branding and placemaking company Right Angle, can be found at youryarra.melbourne

However, YRBA has also appointed long-time Southbank Local Jill Bartholomeusz to take to the streets and buildings of the suburb to interview people face-to-face. Until recently, Jill was librarian and student welfare coordinator at Southbank's Photography Studies College.

A key prize of a dinner for two people on the Spirit of Melbourne (valued \$350), plus 10 x \$50 local dining vouchers are available in a prize pool. •

For more information:
Tim Bracher, YRBA
0412 502 931

Quiz



- 1. Aside from Australia, which other country has hosted the Australian Open?
2. Which local real estate agency and agent were recognised as the suburb's best in the recent RateMyAgent awards?
3. Which actor starred alongside Adam Sandler (pictured) in I Now Pronounce You Chuck and Larry?
4. Sitting 46 floors above the street, where will you find Southbank's tallest cocktail bar?
5. Global electric scooter company Lime says it is continuing to take steps to prevent its vehicles from being ridden illegally where?
6. Which of Southbank's art institutions is most visited: A) NGV International, B) LUME or C) Arts Centre Melbourne?
7. Who directed the 1979 film My Brilliant Career?
8. Yellowfin, southern bluefin and albacore are all types of what fish?
9. What is the name of celebrity chef Heston Blumenthal's first restaurant?
10. Is the coping saw a type of hand saw or electric saw?
11. Melbourne's Moomba festival was first held in which year? A) 1948, B) 1951 or C) 1955
12. The City of Melbourne have introduced a new Food Organics and Garden Organics (FOGO) trial aimed at reducing waste by how much?

QUIZ SOLUTIONS

1. New Zealand 2. Ray White Southbank, Michael Pastrikos 3. Kevin James 4. The Cloakroom Bar, Corner of City Rd and Clarendon St 5. The Footpath 6. A) NGV International 7. Gillian Armstrong 8. Tuna 9. The Fat Duck 10. Hand saw 11. C) 1955 12. 80 per cent

5x5

No. 022

Insert the missing letters to make 10 words - five reading across the grid and five reading down.

5x5 grid with missing letters: T Q I A, S R S, A L, S O S

SOLUTIONS

TFTRA, EQUIP, SURFS, TABLE, SLOES

PUZZLES AND PAGINATION @PAGEMASTERS PTY LTD PAGEMASTERS.COM

Apr, 2023

Sudoku

No. 022

Fill in the blank cells using the numbers from 1 to 9. Each number can only appear once in each row, column and 3x3 block

EASY

9x9 Easy Sudoku grid

HARD

9x9 Hard Sudoku grid

SOLUTIONS

EASY

Easy solution grid

HARD

Hard solution grid

Wordfind

Theme: Dogs

The leftover letters will spell out a secret message.

Wordfind grid with dog-related words and leftover letters

- BEAGLE PUG
CANINE RETRIEVER
CHIHUAHUA ROTTWEILER
DACHSHUND SCHNAUZER
FLUFFY SHEEPDOG
GREAT SPANIEL
MUTT TERRIER
POMERANIAN
POOCH WOLFHOUND

Secret message: Best friend

Crossword

No. 022

ACROSS

- 1 Levels (of quality) (9)
6 Conversations (5)
9 Rampaging (7)
10 County in NW England (7)
11 Lackadaisical (9)
13 Astound (5)
14 Colouring (7)
16 Fantasy creature (7)
18 Greek letter (3)
19 Climbing support spot (7)
20 Sewer entrance (7)
21 Member of a Jamaican religious movement (5)
23 Choosers (9)
26 Food (archaic) (7)
27 Distance in models or maps (7)
28 Cooks (quickly) (5)
29 Distributes (9)

Crossword grid with clues

DOWN

- 1 Horses' fathers (5)
2 Loathe (9)
3 Tendency (5)
4 Mat (3)
5 Is not good (colloq) (5)
6 Associate (9)
7 Blood carrier (5)
8 Impasse (9)
12 Bordered (5)
14 Weekend days (9)
15 Worshippers (9)
16 Desert animal (5)
17 Study of the production and consumption of goods (9)
22 Hindu deity (5)
23 Satisfied fully (5)
24 South Australian valley (5)
25 Long detailed stories (5)
27 Distress call (1,1,1)

SOLUTION

Crossword solution grid

Codeword

No. 022

Codeword grid with numbers and letters

SOLUTIONS

Codeword solution grid

Codeword solution grid

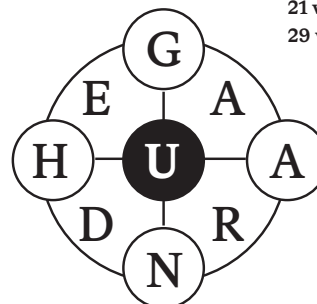
9-Letter

No. 022

Today's Focus:

- 14 words: Good
21 words: Very good
29 words: Excellent

Using the nine letters in the grid, how many words of four letters or more can you list? The centre letter must be included and each letter may only be used once. No colloquial or foreign words. No capitalised nouns, apostrophes or plural words ending in "s".



SOLUTIONS

Reference: Collins Concise English Dictionary

argue, argue, argued, auger, aura, 'drug, dunce, dunce, gerund, guar, guard, harangue, HARNATURED, heed, huge, huge, hung, hunger, nude, nudge, nudged, ruede, tunde, tung, under, unheard, unread, urea, urge, urged

What's on: April 2023

Community Calendar



UNTIL DECEMBER 2023, 10AM - 4PM
Arts Centre Melbourne Sunday Market
 Featuring local designers and artisans, discover handcrafted treasures made by local artisans at Arts Centre Melbourne's Sunday Market.



THURSDAYS, 10.30AM - 11AM
Stompers at Southbank Library at Boyd
 Come along for an energetic 30 minutes of stories, songs, rhymes, music and most of all, fun. Ages 18 months to 3 years; no bookings necessary. 03 9658 8300

MAY 4 TO 7
Melbourne Writers Festival
 Attend various events hosted by some of the most iconic Australian literary artists and international guests at different locations across the City of Melbourne.
 tickets: mwf.com.au



UNTIL APRIL 23
Melb International Comedy Festival
 Get your comedy fix at Malthouse Theatre with a range of shows on this festival season. Tickets: malthousetheatre.com.au



UNTIL MAY 31
Moon Dog Paradiso at the Arts Centre
 Melbourne brewery, Moon Dog, is bringing cold drinks, a food truck and live entertainment to the riverfront terrace. Children and dog-friendly.
artscentremelbourne.com.au



SATURDAYS, 10AM - 12PM
SOUTHBANK SUSTAINABILITY GROUP
 Join a group of green sustainability enthusiasts who meet on the first and third Saturday of each month. Details on facebook.
 Boyd Community Hub

Business Directory

Church

St Johns
Southgate

20 City Road Southbank
 Telephone 9682 4995
www.stjohnssouthgate.com.au

Physiotherapy

Elite Sports Physiotherapy

Sports & Spinal Physiotherapy
 Remedial Massage
 Clinical Pilates
 Post-Surgical Rehabilitation
 Free Injury Assessments
 WorkCover/ TAC Claims

Mezzanine Level, 13-15/1 Freshwater Place, Southbank
 PHONE: 8640 0328 WEB: www.elitesportsphysio.com.au

Real Estate

Ray White Southbank | Port Phillip
 111 Clarendon Street, Southbank 3006
 P: (03) 8102 0200
www.raywhitesouthbank.com.au

Shopping

QUEEN VICTORIA MARKET

For the best fresh produce, gourmet food and specialty shopping, you can't beat Queen Vic Market.

Open Tuesday, Thursday, Friday
 Saturday & Sunday
 with plenty of affordable parking.
QVM.COM.AU

Fitness

JUSTINTIME
 JUSTINTIME
 WORKPLACE HEALTH PERSONAL TRAINING

All trainers are University Degree qualified and we come to you!

www.justintimeworkplacehealth.com
www.justintimept.com

Photography

PHOTOGRAPHY STUDIES COLLEGE

MASTERS | DEGREES | DIPLOMAS
 CERTIFICATES | SHORT COURSES

Find Out More
PSC.EDU.AU + 61 3 9682 3191
info@psc.edu.au | 37-47 Thistlethwaite St, South Melbourne VIC 3205

Legal Notice

Stella Marie Minahan late of 1204/22 Dorcas Street, SOUTHBANK VIC 3006, Retired, deceased.

CREDITORS, next of kin, and others having claims in respect of the will/estate of the above named deceased, who died on 5 November 2022 are required by the Executor, Benjamin Ronald Franklin, c/- 41 Lydiard Street South, Ballarat VIC 3350, to send particulars of their claims to him by 6 June 2023, after which the Executor may convey or distribute the assets, having regard only to the claims of which he then has notice. Probate was granted in Victoria on 9 February 2023.

Functions

St Johns
Southgate

Facilities hire Beautiful venue for weddings and memorial services
 Concert venue with excellent acoustic and comfortable seating
 Spacious function room Meeting rooms Kitchen

20 City Road Southbank
 Telephone 9682 4995
www.stjohnssouthgate.com.au

Politician

We're here to help. Please get in touch if you need assistance.

Your Federal MP for Southbank.

Josh Burns MP
 FEDERAL MEMBER FOR MACNAMARA

joshburns.com.au
josh.burns.mp@aph.gov.au
 (03) 9534 8126
 219 Barkly St, St Kilda VIC 3182

NWF Lawyers
 41 Lydiard Street South
 Ballarat VIC 3350
 Ph: 03 5331 1244
 Ref: 220856

SOUTHBANK NEWS

Talk to Southbank News owner Sean Car
 t 0433 930 484 e sean@hyperlocalnews.com.au
 about how to customise your campaign to our audience every month.

Here today, gone tomorrow

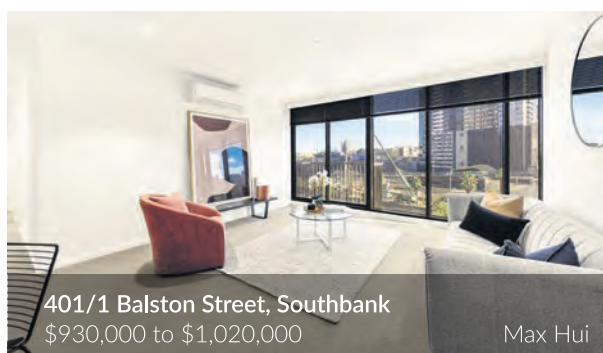
RayWhite



Scan QR for further details. Call us on 8102 0200 or email us via southbank.vic@raywhite.com to book an appraisal for sale or rental. Visit raywhitesouthbank.com.au for more details.



2706/433 Collins Street, Melbourne
\$2,400,000 to \$2,600,000
Max Hui



401/1 Balston Street, Southbank
\$930,000 to \$1,020,000
Max Hui



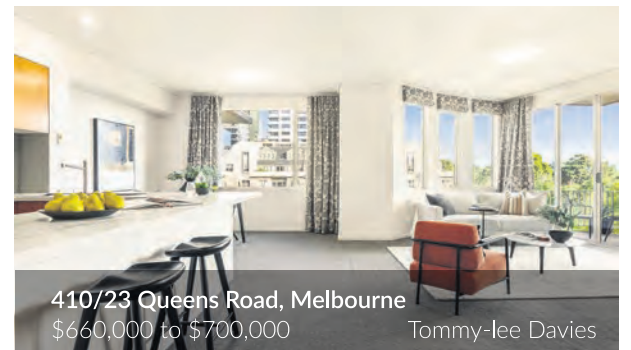
4911/70 Southbank Boulevard, Southbank
\$550,000 to \$600,000
Max Hui



1209/31 City Road, Southbank
\$385,000 to \$420,000
Georgia Ackroyd



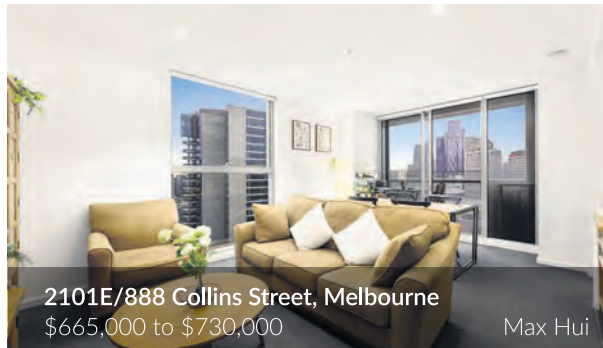
710/31 City Road, Southbank
\$330,000
Max Hui



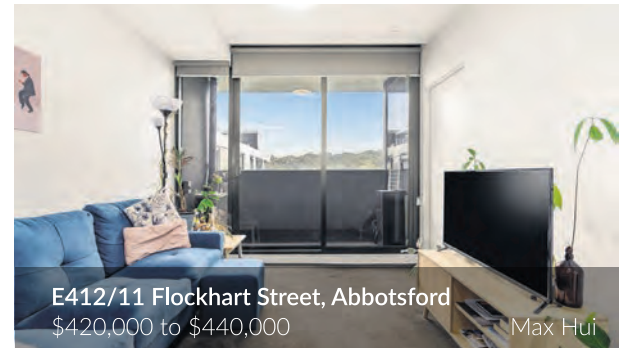
410/23 Queens Road, Melbourne
\$660,000 to \$700,000
Tommy-lee Davies



610/8 Garden Street, South Yarra
\$380,000 to \$410,000
Austen Kosasih



2101E/888 Collins Street, Melbourne
\$665,000 to \$730,000
Max Hui



E412/11 Flockhart Street, Abbotsford
\$420,000 to \$440,000
Max Hui



604/8 Lygon Street, Brunswick East
\$575,000 to \$630,000
Max Hui



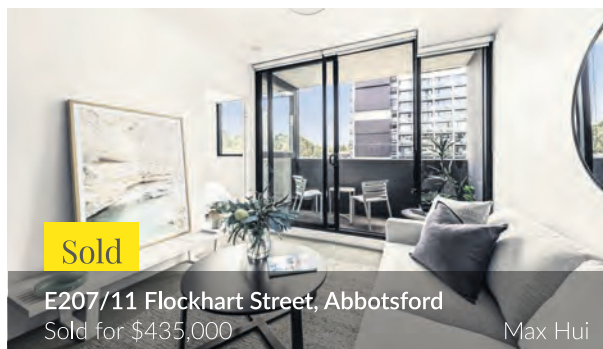
4508/45 Clarke Street, Southbank
Sold for \$700,000
Tommy-lee Davies



1605/33 Clarke Street, Southbank
Sold for \$260,000
Austen Kosasih



501/28 Wills Street, Southbank
Sold for \$325,000
Austen Kosasih



E207/11 Flockhart Street, Abbotsford
Sold for \$435,000
Max Hui

Michael Pastrikos: 0404 282 864
Max Hui: 0430 238 021
Tommy-Lee Davies: 0416 823 173
Trent Bonnici: 0402 670 441
Georgia Ackroyd: 0458 012 429
Austen Kosasih: 0422 396 900

raywhitesouthbank.com.au