

The voice of Southbank

# SOUTHBANK Local NEWS

■ **Hamer Hall preview**

See page 2

■ **SRG welcomes fresh faces**

See page 3



■ **Networking Breakfast**

See page 5

■ **Port Melbourne Primary running out of room**

See page 7



## Police station for Southbank

**Forget the much-touted police pod, Southbank is set to have its very own police station, with a 50-member facility to be built in the area before 2015.**

The new facility will replace the station currently located at St Kilda Rd.

The City of Melbourne has cited the new station as a major reason for cancelling the police pod which was planned to tackle Southbank's rising crime rates.

Both Victoria Police and the council agree that the mobile police facility trialed during 2011 are the most practical solution to fill the void, before the new station is built.

The Southbank police station will become a reality after the St Kilda Rd complex is relocated to two locations - the operational components coming to Southbank and the administration going to a separate Docklands location.

Superintendent Peter O'Neill said that when the St Kilda Rd station was built, Southbank was a very different place to now.

"The St Kilda Rd police station will be moved to where it is more needed nowadays," Mr O'Neill added.

A report to the City of Melbourne's Future Melbourne Committee said the plan for the Southbank police station was a major reason that the police pod idea was thrown out.

"As a result (of the new station) there will be a significant police presence in the

Southbank area by 2015 which would negate the requirement for the pod," the report states. "It is envisaged that there will be at least 50 police officers stationed at the proposed Southbank police station."

Councillor Ken Ong, a long-time supporter of the pod, confirmed the decision to abandon it was heavily influenced by the promise of a beefed-up police presence.

"It was the long-term assurance that led to me agreeing to this (cancelling the police pod) compromise," Cr Ong insisted.

"We didn't want to spend \$350,000 on a pod that may be in use for only two years."

An appropriate site for the new station is yet to be decided on, with the police in consultations at present, analysing the entire area for a suitable location.

Many aspects must be considered including budget, problem regions and accessibility.

According to Cr Ong, a site close to where the pod was planned at Queensbridge Square would be ideal, which is also in close proximity to Crown Casino.

He added: "If the station is anywhere in the Southbank area it will be easy for police to get around to anywhere within the area, so it will be an acceptable location for the City of Melbourne."

Southbank Residents' Group newly-elected president Mabel Vargas said she hoped the new station would become a reality.

"I hope that this commitment becomes a reality and that in three years time we are not told that the police station is not going to happen," Ms Vargas said.



## Gold rush celebrates new year

Eureka! Southbank lit up spectacularly on new years eve, headlining the City of Melbourne's gold-themed celebrations.

Southbank, the CBD and Docklands all had fireworks displays that proved very popular among party-goers.

Fireworks were let off during the evening for families and then at midnight for the true revellers among us.

The gold theme was maintained throughout the night, and was highlighted in both major displays.



WE ARE YOUR LOCAL GROCER!  
182 City Road, SOUTHBANK  
P: 9686 1561

# New chief for convention centre

Suite 108, 198 Harbour Esplanade  
PO Box 23008 Docklands 8012  
Tel: 8689 7979 Fax: 9602 2929  
[www.southbanklocalnews.com.au](http://www.southbanklocalnews.com.au)

Advertising  
Tel: 8689 7980 Fax: 9602 2929  
[advertising@southbanklocalnews.com.au](mailto:advertising@southbanklocalnews.com.au)

Reader contributions are welcome.  
Please send articles and images to  
[news@southbanklocalnews.com.au](mailto:news@southbanklocalnews.com.au)

Deadline for the March edition is Feb 9.



*There's been a changing of the guard at Melbourne Convention and Exhibition Centre (MCEC) after the unveiling of new chief executive Peter King was announced late last year.*

MCEC trust chairman Bob Annells made the announcement after a long and extensive search. Candidates from Australia and overseas were considered.

Mr King was the chief executive of the Royal Agricultural Society of NSW, a role in which he oversaw the Royal Easter Show.

That experience was a contributing factor in Mr King's eventual appointment, with Mr Annells saying: "The trust had been lucky to attract an executive of Peter King's experience and quality to the crucial chief executive role at the MCEC."

"He brings a great insight and a tremendous track record of achievement in venue management and international marketing amongst many other attributes," Mr Annells added.

"I'd like to congratulate Peter on his appointment and look forward to working with him and MCEC's senior management team on further developing our multi award-winning venue," he said.

Mr King will take over as chief executive from early February.

## Hamer Hall preview

*Hamer Hall is getting closer to completion and the Arts centre has given the Southbank Local News a sneak peak at the progress.*

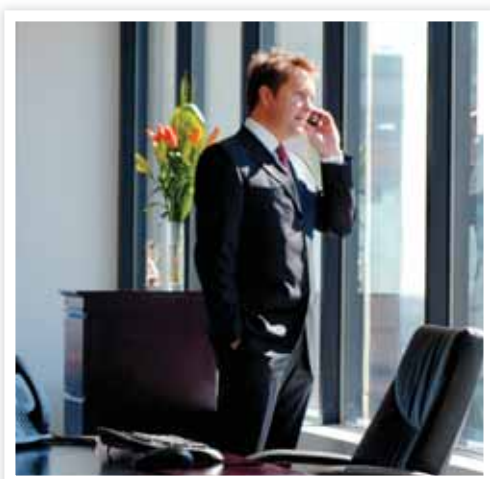
This picture is of Judith Isherwood, the Chief Executive of the Art Centre Melbourne, inside the updated auditorium.

Ms Isherwood is sitting in the very comfortable new seats, erected within the reconstructed auditorium.

Changes to the auditorium included newly installed seating, acoustics and technologically advanced staging systems.

The newly decked-out auditorium is just part of the \$128 million upgrade, which includes a completely reconstructed facade, opening the centre up to its riverfront.

The reconstruction remains on time to be complete this year.



## AN OFFICE YOU CAN'T RESIST.

EXPERIENCE OUR VIRTUAL OFFICE FACILITIES  
Support Team • Meeting Rooms • Leading IT and Communications

CALL US ON 03 9982 4527  
OR VISIT [SERVCORP.COM.AU](http://SERVCORP.COM.AU)

**SERVCORP**

# SRG welcomes fresh faces

**The Southbank Residents' Group (SRG) has a new president and committee after its annual general meeting (AGM) in December.**

Mabel Vargas has been a resident of Southbank for seven years and steps up as president and former acting president Joe Bagnara becomes her vice-president. Mary-Jo Lynch is the group's new secretary while Marjorie Secomb remains treasurer.

Ms Vargas is thrilled to be taking on the role, saying she fell in love with Southbank as soon as she moved in.

"It was definitely love at first sight," she said, adding: "We're very lucky here to be so close to the city. I work in the city and the walk home is just beautiful, all year round."

Ms Vargas said she and the new team were excited about their role in the community and were ready to address the issues residents

faced living in such a unique suburb.

"The main issue for me is to have a sustainable Southbank," Ms Vargas said.

"The community needs to be underpinned with the right infrastructure to ensure it can handle the number of residents living here," she added.

Newly-elected secretary Mary-Jo Lynch shared the enthusiasm, outlining the importance of a group such as the SRG in any suburb.

"The group is the perfect forum for our community. It gives our residents an important voice," Ms Lynch said.

"A group like this can bring voices from separate buildings together, giving common issues much more voice than they would have from separate owners corporations," she added.

Ms Lynch too loves the area and says the accessibility makes it a great place to live. She says however there is plenty of work to be done through the Southbank Residents' Group.

"For example, there is the issue of not having a local school. It is not just for the parents and children missing out on the facility but it would also double as a community space," Ms Lynch says.

Outgoing president Joe Bagnara is excited about the future of the SRG and is staying on as vice-president to help ensure a smooth transition for the new leaders.

"I'm very pleased people of Mabel and Mary-Jo's age and ability have shown such great interest in the Southbank Residents' Group. It means the important role we play in the area can continue into the future," Mr Bagnara said.

In an attempt to grow the awareness of the group, a focus is now to set up a general committee within the group, to help involve as many residents as possible in the community issues they will be addressing.

[Comment on this story online: www.southbanklocalnews.com.au](http://www.southbanklocalnews.com.au)

# Moomba moves our way

**Moomba fever is set to hit the streets of Southbank, with the traditional parade moved from its Swanston St route to St Kilda Rd.**

St Kilda Rd has been busy in recent times. It has hosted the Cadell Evans' homecoming ride, the royal tram carrying the Queen and Prince Philip and a huge crowd during new years eve celebrations.

Moomba is set to further enhance the thoroughfare's reputation as a fantastic strip to host events and large crowds.

Unfortunately the move is a one-off and has been forced by the Swanston St redevelopment. The parade will return to the original route after this year.

The new site was picked because of its proximity to the main festival site - Alexandra Gardens.

The Melbourne institution will have more than 100 musical acts, the largest musical line-up ever.

Acts include Josh Pyke, The Panics, Tex Perkins, Darryl Braithwaite and Owl Eyes.

For the Moomba lovers, the Birdman Rally will return to the Yarra, sure to provide entertainment for all.

Lord Mayor Robert Doyle was thrilled with the temporary parade route, saying: "What could be more Melbourne than watching the Moomba parade from one of our beautiful parks, Kings Domain, and using one of Melbourne's grandest boulevards, St Kilda Road?"

"At the conclusion of the parade families can get up close to the floats before going down to the adjacent Alexandra Gardens for all the fun of Moomba," Cr Doyle added.

The Moomba festival starts on Friday, March 9 and runs until Monday, March 12.

[Comment on this story online: www.southbanklocalnews.com.au](http://www.southbanklocalnews.com.au)



The new team (From left to right): Mary-Jo Lynch, Joe Bagnara and Mabel Vargas



## TWO-COURSE LUNCH FROM \$39\*

*Offering indoor and outdoor options, Bob's is perfect for team lunches, after work drinks, Christmas parties or special occasions. With great steaks, award-winning wine list & warm hospitality, Bob's is sure to impress family & colleagues alike.*




**BOB'S STEAK & CHOP HOUSE**  
 737 Bourke St Docklands  
 (Opp. Gate 3, Etihad Stadium)

Call 0432 209 369 for Functions/PDR  
 9642 3350 for Reservations

[www.bobs-steakandchop.com.au](http://www.bobs-steakandchop.com.au)

\*OFFER VALID FOR GROUP OF 12 OR MORE

# The chicken or the egg?



Editorial  
Comment

Sean Rogasch

*The timeless problem of which comes first is becoming an issue for Southbank. The local version features a school and families rather than the traditional chicken and egg, but the riddle remains the same.*

The problem is a simple one: Does Southbank really need a primary school given its low number of families in the demographic needing one? Or are there only a small number of families living here because of the lack of this most important facility?

One thing remains certain: A primary school would guarantee to make Southbank a more family-friendly location to live and, with our projected growth over the next few decades, this will become more important.

With a story in this edition about the ever-expanding Port Melbourne Primary, it is time a local primary school was seriously looked at for Southbank, not just talked about.

As Port Melbourne Primary principal Peter Martin says: "Every child in the inner city should have a primary school within walking distance."

It is important to consider that as Port Melbourne PS runs out of room, it will eventually be forced to tighten its zone, blocking Southbank students from enrolling and leaving them with little public school options south of the city.

The benefits of a local primary school aren't just confined to those with primary school-aged children. A school would give Southbank a key meeting place or, as MP Martin Foley puts it, "some heart".

An example of this "heart" was shown to me on a recent trip to my hometown on the Mornington Peninsula. I visited my old primary school, which was holding its annual arts fair fundraiser.

In a town with a population of less than 2000 (that's 12,000 less than Southbank) the school attracted a huge crowd, many of whom (such as my family) hadn't had a direct connection to the school for more than 10 years, while others never had an association, but just enjoyed being part of the school community.

The place was buzzing. Art, wine, music, dancing and, most of all, fun. This was the sort of event, in the sort of place that really brings a community together.

It proved that school grounds can be much more than just a primary school. It's the kind of meeting place so desperately wanted by Southbank residents.

Southbank Residents' Group secretary Mary-Jo Lynch puts it well when she says: "It (a local primary school) is not just for the parents and children missing out on the facility but it would also double as a community space."

The "build it and they will come" adage needs to be adopted, as the school doesn't have to have hundreds of pupils right away (although the growth predictions from Port Melbourne Primary would suggest otherwise). As the suburb grows, so too will its school.

The time for action on a school is now. It is the facility the suburb needs more than any other, and one that can be used as both a school and a community builder.

Maybe then we can start working on getting the chicken across City Rd.



## Not the most liveable suburb

*Melbourne might be the most liveable city in the world, but within it, Southbank has been listed the 69th most liveable suburb.*

The study was run by the Melbourne Weekly, ranked suburbs against selected criteria that included traffic, access to public transport, access to schooling, open space and crime level.

The survey admits its own flaws however, suggesting it takes into account distance rather than time when assessing proximity to schools and transport.

Perhaps that explains the surprising result of the highest possible rating of five for Southbank's access to schools.

Other interesting points for Southbank include our flawed crime-rate rating, and open space scored just one out of five.

We don't have to look to far to find the number one-ranked suburb, with the survey ranking South Yarra as Melbourne's top suburb. Down the other end of the scale was Hallam, coming in last as 314th ranked suburb.

## Arts spire fires up

*The new years eve celebrations may have looked spectacular, but revellers in and around the Arts Centre got more than they bargained for when a small section of the spire caught fire.*

The fire was believed to have been contained to the rogue firework that caused it, although some burning debris fell onto the centre's roof to cause a small second fire.

The Metropolitan Fire Brigade (MFB) was called to the centre just after midnight and contained the second fire, after the first had burnt itself out.

The Arts Centre was relieved to report that the damage was mostly cosmetic, and that no one had been injured in the incident.

Acting chief executive Tim Brinkman said everyone acted appropriately, given the unique circumstances.

"I would like to commend the MFB and our staff for staying calm under pressure and safely evacuating all visitors and patrons, a task particularly complicated by the large crowd outside Arts Centre Melbourne," said Mr Brinkman.

In happier news for the Arts Centre the State Government has announced a \$11.3 million funding boost for the centre, to ensure it reaches new audiences.

Premier and Minister for the Arts Ted Baillieu said the money was intended to help with the modernisation of Hamer Hall, as well as helping the centre to present even bigger events.

"Big arts performances are part of what makes Melbourne the arts capital of Australia and one of the best arts cities in the world, bringing visitors and jobs and adding to the excitement in our great state," Mr Baillieu said.

He added that it would enable different types of entertainment for the centre, saying: "This will allow the flexibility to stage performances and events outside the auditorium and throughout the day, extending activity beyond Hamer Hall's main stage performance program."



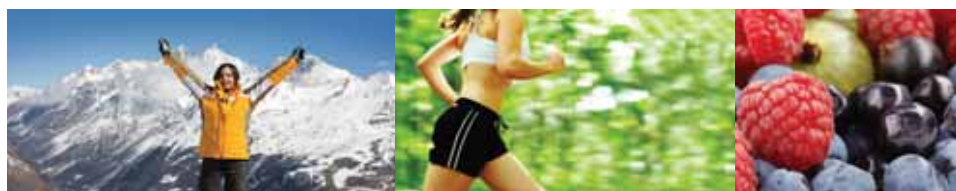
The Arts Centre spire fireworks



Travel Doctor **Plus+**  
Your Healthy Lifestyle Clinic

## Docklands Medical & Lifestyle Clinic

Male & female GPs



General practice  
Skin cancer screening  
Women's health  
Travel medicine  
Health & lifestyle programs

Level 4, 700 Collins Street, Docklands

Open Monday to Friday 8.30am - 5.00pm

Call 8622 6333 | [www.docklandsmedical.com.au](http://www.docklandsmedical.com.au)

# Networking breakfast

*Much of Southbank's business community came together during November for the Yarra River Business Association's (YRBA) annual networking event, held in the spectacular Eureka 89 function room.*

The room is too high for the elevators in Eureka tower as guests were forced to hit the staircase from level 88. The trip was well worth it, as the function area gave guests panoramic views of the city and outer suburbs, making for a stunning start to the day.

The impressive buffet breakfast menu included samples of poached eggs, avocado and chilli covered toast and muesli.

Attendees remained standing throughout the meal, to ensure maximum networking could take place.

The guest speaker was Leigh Harry, formally the CEO of the Melbourne Convention and Exhibition Centre (MCEC), and now the CEO of Tourism Victoria.

YRBA president John Ahern was thrilled with the event, telling the *Southbank Local News*: "Not only was it a great opportunity for members to network, but also to show off the sheer beauty of the river and its surroundings."



Steve Hargitay, Dennis Monteiro and Grace Chan



Holley Bennett, Rory Murphy, Daniel Chirau and Vin Wright

# Time to get creative

*The City of Melbourne is encouraging young people to get creative, with a free summer creative arts program taking place this month.*

Running from January 15 through to January 28, Signal 37 is a chance to enhance skills in filmmaking, writing, art and music.

The arts studio will hold an exhibition at the end of the program, giving participants the chance to display what they have learned.

Councillor Jennifer Kanis believes Signal 37 is a fantastic opportunity for young people, saying: "This summer 100 young people from diverse backgrounds will get the chance to gain valuable experience by working with professional artists, developing skills across a wide range of art forms and strengthening social networks."

The Signal 37 studio is behind Flinders Street Station on Northbank, at the top of Banana Alley.

Anyone who is interested in taking part in the program, or is just after more information on Signal 37, should go to the website: [www.signal.net.au](http://www.signal.net.au).



The Colonial Tramcar Restaurant offers open dated gift certificates which make an ideal present for any occasion.

*Gift Certificates are valid for 12 months from the date of purchase and are presented in a special souvenir giftpack.*

If you are looking for the ideal gift, visit our website [www.tramrestaurant.com.au](http://www.tramrestaurant.com.au) or telephone 9696 4000.



**THE COLONIAL  
TRAMCAR  
RESTAURANT**



## An experience above all else

Present this coupon at the Eureka Skydeck Ticketing Counter to receive 20% off entry\*

The Southern Hemisphere's highest viewing platform with the world's only **EDGE EXPERIENCE**

Available on the App Store

[twitter](#)

[facebook](#)

Open 10am until 10pm Daily (last entry 9.30pm)  
Riverside Quay Southbank Melbourne Australia  
[www.eurekaskydeck.com.au](http://www.eurekaskydeck.com.au) 03 9693 8888

\* This discount is not valid with any other offer. This discount is not valid for the EDGE experience. Discount valid for Adult, Concession, Child and Family passes only. SOUTHBANK LOCAL NEWS



This light filled one bedroom apartment in Neozoo is presented immaculately, offering all that Melbourne CBD can give you; this is a great opportunity for an investor or owner occupier. Neozoo is located opposite the award winning Southern Cross station. Offers 1 bedroom, car park on title, balcony, security entrance, laundry, Pool, Gym and BBQ.

**Melbourne** 1106/200 Spencer Street  
BOUTIQUE LIVING AT IT'S BEST  
1 Bed 1 Bath 1 Car  
**Private Sale** \$419,000  
**Inspect** By appointment

Lina D' Ambrosio  
0430 929 851



**Southbank** 2107/63 Whiteman St  
GREAT LOCATION TO LIVE OR INVEST  
1 Bed 1 Bath 1 Car  
**Private Sale** \$410,000  
**Inspect** By appointment

Located on the 21st floor is, this great quality huge 1 bedroom 1 Bathroom 1 Car Space superb condition apartment. Includes Modern kitchen fittings, stainless steel Miele appliances including cook-top, oven, range-hood and dishwasher. This near new apartment has a generous size bedroom with BIRs. Included also, video intercom and resort style facilities. VUE GRANDE Southbank is situated within walking distance to Melbourne CBD, Southbank Promenade and restaurants Richard Mindraoui 0437 250 964



**Southbank** 1203/109 Clarendon Street EXCELLENT AND AFFORDABLE  
2 Bed 1 Bath 1 Car  
**Private Sale** \$450,000  
**Inspect** By appointment

Fantastic fully refurbished, three bedroom apartment located on the 18th floor with great views, offers the discerning buyer the comforts of three large bedrooms, light filled open plan living leading to a good size balcony with great views. Features include secure under cover car park, secure entry, heating and cooling, resort style facilities including indoor heated pool, spa, sauna, gym, tennis court, and BBQ area. The building is located in the heart of Southbank close to world class cafes and restaurants. Richard Mindraoui 0437 250 964



**Melbourne** 3602/288 Spencer Street  
NO.1 FOR LOCATION & VIEWS  
2 Bed 1 Bath 1 Car  
**Private Sale** \$570,000  
**Inspect** By appointment

This luxurious & spacious near new two bedroom apartment located on the top floor in the newly completed Atlantis building comes fully furnished and presents the latest in inner city living. The unit features a modern kitchen with stainless steel appliances and ample cupboard space that opens to a dining/living area which leads to a balcony with spectacular bay and Dockland views. This apartment is great for an investment or perfect for someone just starting out in Melbourne.

Lina D' Ambrosio  
0430 929 851



**Southbank** 2408/180 City Road  
HEAVILY REDUCED  
2 Bed 2 Bath 1 Car  
**Private Sale** \$599,000  
**Inspect** By appointment

This spectacular and luxurious two bedroom apartment is now available in the prestigious Southbank One building. Located on the 24th floor, this apartment features breathtaking views overlooking the Yarra River, CBD and Port Phillip Bay. Featuring a master bedroom with en suite and generous sized second bedroom with built-in-robres, this apartment is perfect for anyone who wants to take full advantage of the city's lively culture while living in a spacious and quiet apartment.

Richard Mindraoui  
0437 250 964



**Southbank** 187/88 Southbank Boulevard, Southbank  
3 BEDROOM WITH A VIEW  
3 Bed 1 Bath 1 Car  
**Private Sale** \$638,000  
**Inspect** By appointment

Imagine yourself living in this luxury two storey sub penthouse on the 26th floor at Dock 5 premier and award winning development. Boasting 3 spacious bedrooms (all with ensuite's) plus study, 2 bathrooms plus additional powder room and an expansive open plan kitchen / dining / living area, surrounded by floor to ceiling windows. This prestige apartment features white marble bench tops, butlers pantry, stone floors, and billiard bar room, storage room and wine cellar. Richard Mindraoui 0437 250 964



**Melbourne** 210/505 St Kilda Road  
LUXURIOUS & BRAND NEW!  
2 bed 1 bath 1 car  
**Private sale** \$820,000  
**Inspect** By appointment

Absolutely stunning! This generous sized two bedroom apartment features fabulous modern kitchen with Gaggenau stainless steel appliances, gas and electric cooking, stainless steel fridge & dishwasher, ample cupboard space, open plan living and dining with floor to ceiling windows allowing loads of natural light. Main bedroom with built-in-robres and Italian tiling throughout. Second bedroom is also generous in size and has built-in-robres.

Lina D' Ambrosio  
0430 929 851



**Melbourne** 617/53 Spencer Street  
A SPECIAL VICTORIAN APARTMENT SURE TO IMPRESS  
3 bed 2 bath 2 car  
**Private sale** \$970,000  
**Inspect** By appointment

Magnificent Victorian sub Penthouse apartment approximately 140sqm situated at Grand Central Apartments, surely Melbourne's best example of Residential Victoriana. Beautifully maintained throughout comprising of three massive bedrooms, superb formal living and dining, well appointed kitchen, two bathrooms, incredibly high ceilings, large west facing balcony overlooking Docklands and two undercover car parks.

Richard Mindraoui  
0437 250 964



**Docklands** 262/55 Victoria Harbour Promenade  
WORTH EVERY MILLION  
3 bed 2 bath 3 car  
**Private sale** \$2 mil  
**Inspect** By appointment

Near new city pad within walking distance to Crown casino and Southbank promenade. Functional floor plan includes fitted kitchen with stainless steel appliances, and ample cupboard space. Good size bedroom with two way ensuite and a second room which could be used as a large study or optional second bedroom. Secure under cover car park and the use of a fully equipped gym and spa pool. Glenn Donnelly 0419 998 235

Shop 5 / 60 Siddeley Street, Docklands  
[www.cityresidential.com.au](http://www.cityresidential.com.au)

For all your real estate needs, including a no obligation FREE market appraisal on your property, feel free to contact one of our agents



The kids at Port Melbourne Primary have to dodge buildings as they play on their oval

## Port Melbourne Primary running out of room

**The ever-shrinking oval at Port Melbourne Primary School is a harsh reminder of the major education problem facing Southbank and the inner-south of Melbourne.**

With more students attending the school every year, permanent and portable classrooms have reduced the once spacious play area. Even the basketball court was built over, with the new court encroaching further into the middle of the grassed oval.

Port Melbourne principal Peter Martin says something has to give, as his school is starting to lose its battle with over-population.

He met with local MP Martin Foley and Leader of the Opposition Daniel Andrews late last year to discuss possible solutions to the growing public education issues in the area.

Port Melbourne is currently the closest and easiest school for Southbank residents and a number of students attend the school who live within our postcode.

The school has grown from 120 students when Mr Martin took over as principal in 2002 to 540 at the start of this year. Predictions show if nothing is done for the area, the number could jump to 994 by 2019.

Current zoning has Port Melbourne primary as the government school for Southbank and large sections of South Melbourne but, with both areas growing quickly, Mr Martin believes the zones will need to be tightened.

He said one of his immediate solutions was: "Continue to implement a local enrolment strategy (a zone) and gradually reduce the size of this zone, with a view to eventually enabling all local families to have automatic access to their closest primary school."

"It is my belief that all children should be able to walk to their primary school."

He said the over-population issue wasn't exclusive to Port Melbourne either, telling *Southbank Local News* Albert Park primary school had been forced to split lunch in two, because there wasn't enough room in the playground for all the kids.

"I never want that to happen here. I do not want to split our lunch hour into two shifts as it is divisive for both staff and students," Mr Martin added.

Mr Martin went on to say he believed a new school was needed in the area within the next four years.

It was better news for secondary-aged kids in Southbank when Education Minister Martin Dixon officially opened the new Albert Park College last November.

After closing its doors due to a lack of pupils and a run down facilities, the college re-

opened to students last year to an extremely positive response.

The new school was forced to turn away 150 of its 300 applicants for this year, showing just how desperate parents around the inner south are for education centres.

Minister Dixon knew parents were excited about the new schools facilities, saying: "Parents recognise that this school is state-of-the-art: it is environmentally friendly, it is equipped with an array of technology, it is comfortable to learn in and, most importantly, the staff are outstanding."

While visiting Port Melbourne primary, Opposition Leader Daniel Andrews reaffirmed the need for more new schools in the area, saying: "Nothing is more important than giving all kids a good start in life."

"It's up to the government of the day to support education infrastructure that parents and kids need. It shouldn't matter who you vote for or who's in government," Mr Andrews said.

When questioned by Mr Martin on what his party could do Mr Andrews answered: "We'll keep working hard to ensure the government doesn't ignore this issue. Ignore it at their peril."

[Comment on this story online: www.southbanklocalnews.com.au](http://www.southbanklocalnews.com.au)

## High-rise at top of industry

Apartment complex Triptych enhanced its reputation when it won two awards at the Urban Development Institute of Australia (UDIA) Victorian Awards for Excellence during December.

The building won awards for high density development and environmental excellence at the annual ceremony.

Among the accolades was appreciation for its fytogreen garden - featured in the December edition of the *Southbank Local News*.

The awards also acknowledged the creativity of Triptych's vertical villages, podium-level rooftop garden and gymnasium/swimming pool.

Managing director of Stable Group (Triptych developer) Danny Flynn said Stable was extremely honoured to accept the awards.

"We are honoured to accept these awards from the Urban Development Institute of Australia and believe it's a testament to the quality of the project and the innovation within its design," Mr Flynn said.

"We are absolutely delighted and look forward to be considered at the national awards for excellence in Perth," he added.



## melbourne food & wine festival

Join us for the Yarra River Launch Weekend on the Progressive Gourmet Luncheon Cruise

1 - 5pm Saturday 3 March and Sunday 4 March

What better way to enjoy the sights, sounds and tastes of Melbourne's premier food and wine event than by enjoying a four hour guided cruise of the river, with canapés and bubbly, then calling-in to enjoy signature dishes, complemented by a glass of fine wine, at Southgate's Scusami (entrée), Pier 35 (main) and Byblos at WTC North Wharf (dessert and coffee).

Normally priced at \$170 - festival weekend special price of \$98 per head.

Phone 8610 2600 to reserve your place for this special festival cruise.

Sponsored by the Yarra River Business Association, Melbourne River Cruises, and associated restaurants





# CUISINE UNDERCOVER

INDEPENDENT REVIEWS FROM SOUTHBANK'S PHANTOM DINER

## Melbourne Public

### Worth a trip downstream

South Wharf certainly came out of the gates with a bang. One massive convention centre, a leading hotel chain and the DFO snatched straight from the jaws of Southern Cross Station. But then for a while it seemed – not much else. Lots of empty cavernous spaces lying dormant over winter ... an ember lit, waiting for the spark to catch.

Well it's alight my friends, and while it might not yet exactly be raging, when it does take off, places like Melbourne Public will be ready for the crowds.

I love a good pub and love it even more when one pops up smack bang in the middle of a really obvious place that previously, you didn't really know existed. I'm talking of course, about South Wharf, at the other end of the Yarra. And while Melbourne Public is huge, with plenty of sun kissed, outdoor space (that I believe takes refuge under a retractable roof in winter – how every Melbourne!), it's also slightly hidden, tucked away behind the Polly Woodside so as you almost stumble across it at the last minute. Inside, the

warehouse kind of feel doesn't exactly scream intimacy, but it does make me want to come back on a Friday night with lots of friends and a few drinks under my belt.

The menu is fancy pub, not quite gastro – although it should be said I dined from the extensive bar menu only, there is a dining area off to the side with a more formal menu. We didn't feel the need to go there however, with the bar options proving enticing enough. Offering a choice of "snacks" or "meals" I decided on a selection of the former as they all sounded pretty hearty.

A dish of slow roasted pork belly with hoisin and chilling dipping sauce featured some generous squares of meat for just \$14.50, however the deceptively crisp looking tops lacked the expected crackle when biting in – perhaps the victims of a longer than intended stint under the bain-marie? The body below perhaps slightly undercooked, the fat between the meat silky yet bountiful, I would have enjoyed it a touch more had it been melted down a tad.

It was harder to find fault with the chicken tenderloins with a chickpea, herb and yogurt salad and a relish mayo (\$16). Three

generous sticks of meat encased in a thick and crunchy crumb that gave way to an almost creamy mouth feel of chicken – although that could have been the fabulous accompaniments.

Other snacks include mini beef burgers, pumpkin and fetta arancini and house-made chicken dumplings and all are around the \$14-\$15 mark. Bar mains include staples such as parmigiana, steak, fish and chips and bangers and mash, with a few fancier options thrown in such as a vegetable tagine or pie floater (well ... intriguing, if not exactly fancy ...). All ranging from the early to late \$20s.

The wine (beer and cider) list is solid, with drinks hailing from where they should (ie. Rieslings from Clare Valley, Chardys from the Morninginton and Bellarine Peninsulas and Margaret River), and a dedicated cellar list for those who want to splash out.

I was there during a week day so I can't say for sure yet if this place is pulling the crowds out of hours, but by crikey it has the capacity and the potential.

**Location:** 11 Dukes Walk, South Wharf (walk over Seafarers Bridge if coming from Docklands, or just continue past the Melbourne Convention Centre if approaching from Clarendon Street)

**Overall rating** ★★★★★

View all our Southbank restaurant reviews and rankings online at [www.southbanklocalnews.com.au](http://www.southbanklocalnews.com.au)

# TOURS ON TRIKE

*Experience the Freedom of a Three Wheeled Adventure*

Experience the wind in your face, and that Feeling of Freedom that only a Trike Tour provides.

Our Tour Guides supply an informative commentary about our wonderful and unique Melbourne. We supply Weatherproof Jackets, Helmets, Gloves and have short, long and tailored Trike Tours to suit everybody.

### RECOMMENDED TOURS

- City Night Time Delights Tour (See the City Lights at Night)
- The TrikeMan's Treat (Our Special every day 2hr Tour)
- Round the Bay on the OZtrike (A Great Full day)
- The Grand Prix Lap (See the actual F1 track)
- Christmas Gift Vouchers (Book on Line)

All major credit cards - 1 to 3 passengers  
Check our Website for all listed Tours

Tel: 9670 6930 | Booking Hotline: 0439753928  
[www.toursontrike.com.au](http://www.toursontrike.com.au) | Trike HQ: 756a Bourke St Docklands

# TRIKEMAN BILLBOARDS

Grand Openings | Sporting Events | Product Launch  
Music Festivals | Trade Shows | Conventions

CALL TODAY FOR A FREE QUOTE  
**03 9600 4552**  
756a Bourke St Docklands





# I ♥ THE NIGHTLIFE

*with DJJ*



## Bend and Stretch!

Not a huge theatre fan myself, I once made an usher extremely mad when I texted during a play at Her Majesties Theatre – awkward. But I do have two words for you after watching a number of video clips of the Guangdong Acrobatic Troupe and those two words are, holy crap! These guys are phenomenal. The acrobatics that they perform are next to impossible and they execute their moves with flawless precision, sort of like me on the dance floor after a few cordials. From juggling tennis balls to juggling each other, there's a reason why these guys have won China's highest honour, the "Wenhua Great Prize" not once, not twice but three times ... holy crap!

**WHAT:** Cultures of China Festival of Spring Acrobatic Spectacular

**WHERE:** State Theatre @ The Arts Centre

**WHEN:** Sunday, February 5

## It's pre-season already?

They've drafted new players, switched up coaching roles, gone to the outback and overseas for some pre-season training and are ready for some controversy... kidding! The AFL boys are ready for pre-season goodness AKA the NAB Cup. Round 1, week one kicks off when Hawthorn, Richmond and North Melbourne go head to head to head on Friday, February 17. Then the following Friday premiers Geelong, St Kilda with their new coach and Sydney will battle it out on the Etihad green. But let's face it, we're all just trying to beat Collingwood!

**WHAT:** NAB Cup

**WHERE:** Etihad Stadium

**WHEN:** Friday, February 17 and Friday, February 24

**WEB:** [www.afl.com.au](http://www.afl.com.au)

## Fire on Ice

I'm fairly sure that it should be illegal for someone as tall and lanky as myself to ice skate either by myself or worse yet, with others where I could do bodily harm. So we'll leave the speed skating to people that could do it in their sleep – like the world junior short track competitors who will be carving it up the last weekend of February in this leap year. Speed skaters from across the planet will be competing at the Olympic-certified venue, Medibank Icehouse, for medals in distances including the 500m, 1000m, 1500m, and the men's and women's relay, I wonder if they'll let me compete in that one if I wear a skirt ...

**WHAT:** ISU World Junior Short Track Speed Skating Championships

**WHERE:** Medibank Icehouse

**WHEN:** Friday, February 24 to Sunday, February 26

**WEB:** <http://www.2012jwcmelbourne.com/>



## Summer of the Seventeenth Doll

*The Melbourne Theatre Company begins its 2012 season with a new production of an Australian classic; Summer of the Seventeenth Doll, written by Ray Lawler.*

The play is set in Carlton in the summer of 1953, marking the seventeenth year of an annual tradition for Roo and Barney: two sugarcane cutters who travel south to Melbourne each year for five months of free-spirited "carry-on" with two Carlton barmaids, Olive and Nancy.

But back for their seventeenth summer, they discover Nancy has gotten married, and she is not present in the play, so Olive has arranged for her friend, Pearl to partake so as to continue the foot loose and fancy free tradition.

As the play progresses it becomes clear that this summer is not what it seems as time has finally caught up with them, scenes filled with tension play out as they try to recreate their lost youth and the fun from the previous years. Ultimately, characters are threatened by the prospect of lifestyle

changes and an uncertain future bubbles underneath their being.

*Summer of the Seventeenth Doll* was first performed in Melbourne in 1955. It is one of the first naturalistic Australian theatre productions, considered one of the most historically significant in our theatre history, with its portrayal of the Australian way of life and its characters.

The play is seen in the Australian literary canon as a work that defines our dramatic literature and is seen as a symbol of our "cultural maturity" in both form and Australian identity.

The historical significance of the play can be seen by looking at Australian drama in the early part of the 20th century. Here, our commercial theatres were not risk takers in regards to new Australian plays, so there was "Buckley's chance" of seeing your work performed as an Australian playwright.

An amateur scene started to grow which was influenced by social realism but it was mainly middle class and socialist. However, some dramas were written between the 1920s and 1950s which became known as uniquely Australian with their harsh settings but they had little success. A lack of funding was commonly seen as

the reason shows were not developed and given professional productions and reaching wider audiences. Theatre historians argue that besides these institutional problems, Australian literary drama faced the dilemma of presenting a national self-consciousness inherited from the European dramatic tradition.

Peter Fitzpatrick saw this because: "The play brings elements of the outback play (the bushman stereotype and the values of mateship and physical prowess) into the domestic interior of classic European naturalistic theatre."

Lawler's "Summer of the Seventeenth Doll" shifts between the framework of European naturalistic style and shifts in the representation of national identity, challenging the notion of our national identity by his ability to combine melodramatic social stereotypes with the naturalistic conventions of complex character construction.

Cast includes: Steve Le Marquand, Robyn Nevin, Helen Thomson  
Director: Neil Armfield

When: Thursday, January 12 to Saturday, February 18, 2012. Contact [mtc.com.au](http://mtc.com.au) or phone: 1300 182 183

**PET stock**  
... part of your family!

...for all your pet care needs

- Premium foods
- Collars & leads
- Bedding
- Accessories
- Health care products

PETstock Sth Melbourne 211 Ferrars St, (03) 9699 4234



# SOUTHBANK FASHION



## Fashion on the Streets of Southbank

### Tara

**LOCATION?**

Southgate

**WEARS?**

I'm wearing a Topshop dress, a Givenchy T-shirt, Balenciaga boots, an Alexander Wang bag with Ellery sunglasses.

**DESCRIBE YOUR STYLE?**

Basic tees, lots of leather and good bags.

**WHAT BRINGS YOU TO SOUTHBANK?**

Drinks with a friend at Ponyfish Island.

**WHERE ARE YOU FROM?**

I'm from Fitzroy

**WHAT IS YOUR FAVOURITE PIECE OF CLOTHING?**

My Acne leather pants

**WHAT MAKES A GOOD OUTFIT?**

The right balance of designer and vintage pieces, mixed with my own personal style and sophistication.

### Roger

**LOCATION?**

Arts Centre

**WEARS?**

Brown chinos, vintage suspenders, Topman t-shirt, a khaki jacket and Vans.

**DESCRIBE YOUR STYLE?**

Easy and comfortable. I wear a lot of vintage.

**WHAT BRINGS YOU TO SOUTHBANK?**

A job interview at the Spiegletent. I got it!

**WHERE ARE YOU FROM?**

Amsterdam

**WHAT IS YOUR FAVOURITE PIECE OF CLOTHING?**

I love my new pair of Vans

**WHAT MAKES A GOOD OUTFIT?**

Something you are comfortable in, and something you bring your own personal twist to.

### Gemma

**LOCATION?**

Arts Centre

**WEARS?**

An op-shop cardigan, a blouse from Top Shop in the UK and custom jeans from Dujour on Sydney Rd.

**DESCRIBE YOUR STYLE?**

Cute, functional, easy.

**WHAT BRINGS YOU TO SOUTHBANK?**

The NGV

**WHERE ARE YOU FROM?**

I'm from Scotland but now live in Carlton.

**WHAT IS YOUR FAVOURITE PIECE OF CLOTHING?**

A tribal, Aztec vintage jumpsuit.

**WHAT MAKES A GOOD OUTFIT?**

Knowing what suits you and your body shape.

# Surf rider

By Samantha Goss

*With Melbourne weather heating up, then cooling down, then pouring down, then heating up again, a common problem for fashion savvy Melburnians is "what the heck do I wear during these unpredictable summer nights?"*

Take your inspiration from the classic Australian surf film *Puberty Blues* and slip into neon colour and kitschy prints to channel a surfer babe vibe this summer.

The "surf luxe" trend is being fast-tracked to the forefront of fashion this season, with acidic yellow, fluorescent green and neoprene pieces all infiltrating recent Australian collections.

For those of you surf neophytes like myself, neoprene is a synthetic rubber typically used when making wetsuits. Australian fashion prince Josh Goot has based an entire collection around neoprene fabrics, showing graphic print versions, as well as structured black, as seen on celebrity fashionista Lara Bingle.

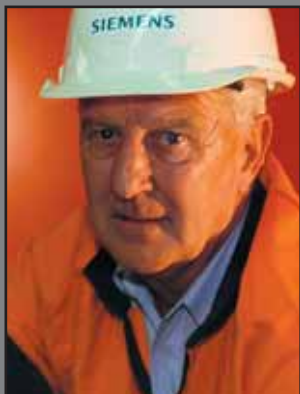
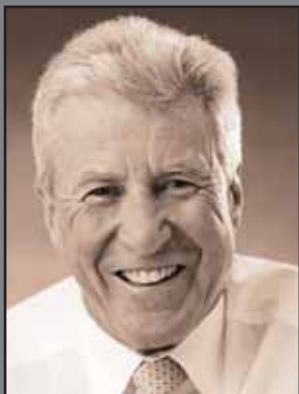
The arrival of UK chain store maven Topshop to Melbourne shores has also brought with it a slew of affordable surf-chic pieces.

For the cooler nights, throw on a pair of baby pink or printed skinny jeans, a good basic grey t-shirt and a fluorescent knit for when the winds pick up – it's part 90s grunge, part Gold Coast surfer and perfectly on-trend for the current season.

Melbourne boutique chain Green With Envy offer a more high end version of the trend, for those who want to inject a summer vibe into their wardrobe yet aren't quite surfer chic.

Its in-house label Nicholas has offered up neon lime green sheer blouses and electric blue dresses which, when teamed with their rose-gold neck plates, create a high fashion take on a cool street trend.

You don't need to be a *Blue Crush* surf hero to pull off this trend. Just sport some neon colours, cool prints and a laid back attitude. Surfboard optional.



david b simmonds photographer

M 0418 328 710 | E studio@simmonds.com.au | W www.simmonds.com.au

advertising • corporate • industry • aerials • architecture • skylines • panoramics • portraits  
 food • stock images • fine art • décor print gallery • Based in Port Melbourne



Ruby receives a \$25 gift voucher from Pet Stock South Melbourne



SPONSORED BY:  
 **PET** stock  
 animal supplies  
 ... part of your family!

211 FERRARS ST, SOUTH MELBOURNE VIC 3205  
 T: 03 9699 4234 | F: 03 8610 2102  
 WWW.PETSTOCKSOUTHMELBOURNE.COM.AU

## Life's a ball, for Ruby

*The little jack russell has an irresistible urge to fetch any spherical object, be it a pebble or a tennis ball.*

Ruby has a taste for lemons and has managed to carry a football in her tiny mouth.

She even dashed onto the court and stole the ball in mid-air while a couple were playing tennis.

As a puppy, Ruby once stole a tennis ball right out of the mouth of a fully grown – and bemused – rottweiler. Fortunately for Ruby, the “rotti” was well trained ... and not hungry.

Ruby loves nothing more than taking a tennis ball on an outing in Southbank, where her owner Greg works, or at home in nearby St Kilda.

She won't stop fetching, and will try to hide in long grass for a “breather”, hoping that Greg won't notice that she's tired.

Ruby turns 2 in April, and doesn't mind a

regular visit to her friendly vets at Port Phillip Animal Hospital, in Albert Park.

She has grown up with a male cat named Scotch, and they are the best of mates and chase each other around Greg's apartment. She just can't work out why all other cats get aggressive and will not join her for a friendly game of chase.

If anything, Ruby is too friendly and was once taken from outside Greg's apartment. It took exactly a week of phone calls and dozens of reward posters by Greg and his mates before she was returned, via a well-known local boarding house.

Greg's teenage daughter, Vanessa, reckoned the name Ruby suited her as a pup, “because she's small and precious”.

## SOUTHBANK RESIDENTS GROUP WITH MABEL VARGAS

### Let's keep up with the times

I came to Melbourne more than nine years ago, attracted by its quality of living and the high education standards provided by its universities.

After living in South Yarra and Port Melbourne, I moved to Southbank after securing a job in the CBD area.

I have lived since then in Southbank and I can say without doubt that it is my favorite place to live.

My interest for Southbank affairs recently got me appointed as the President of the Southbank Residents Group Inc (SRGI).

While writing this article, I came across another article written almost ten years ago regarding the challenges faced by the Southbank community. To my surprise most of the issues remained and little or nothing has been done to address them. My concern is that the local population has doubled since then and the infrastructure and local amenities have not kept pace with the population growth.

A snapshot of Southbank 10 years ago, showed that the population was around 6,000 residents made up of young professionals, international and

local students, young couples and empty nesters. The consensus of the people living in Southbank was that the suburb had a shortage of schools, library services, local parks, childcares, low cost meeting space and shopping facilities (clothing, groceries, etc).

Southbank 2012 has a population of 11,500 and the issues still remain the same. These issues will be compounded once all the high rise buildings currently under construction are finished, which will put additional pressure to the already congested traffic on City Road, Queensbridge Street and Power Street.

The sense of community continues to improve and more projects similar to the one undertaken at the old Boyd School site should be developed to make Southbank a more vibrant and livable suburb.

It is important that the local and the state governments connect with the community to understand our needs in order to address them in a timely manner and not in another 10 years. Please do not let Southbank become a high rising dumping site and ensure that its community receives the amenities and services that we deserve. Let's stop playing catch up.



  
 ST JOHNS  
 SOUTHGATE

### Music for the angels

*Theologian Karl Barth once mused whether the angels in heaven when praising God played Bach. He wasn't sure.*

Southbank residents and visitors, though, can be certain of hearing the great composer's choral music regularly and right at the centre of our community.

St Johns Church Southgate presents the cantatas of JS Bach, wonderful short works on religious themes for vocal soloists, choir and orchestra, in a program of about eight performances throughout the year.

These musical gems, of which about 200 survive, were intended by Bach to be part of Lutheran church services and that is the way they are presented at St Johns.

The first cantata for this year, to be presented at 9am on Sunday February 5, is *Erfreute Zeit im neuen Bunde* (BWV 83), a work for three soloists, choir, strings, two oboes, two horns and continuo. It will feature Sally Ann Russell (mezzo soprano), Robert Macfarlane (tenor) Jerzy Koslowski (bass) and the St Johns Bach

Choir and Orchestra, all under the direction of Dr Graham Lieschke.

Dr Lieschke, the St Johns Director of Music, is the driving force behind the program, which, in its 15th year, is one of the longest-running Bach programs in the world and the only one of its kind in Australia.

St Johns Bach Choir and Orchestra is a period instrument orchestra and is often joined by some of Australia's finest period instrument specialists and soloists.

Cantata services at St Johns also feature Bach's organ music played by Dr Lieschke on an Australian-built Smenge pipe organ, the German baroque style of which is tailor-made for this music.

Some works in the 2012 program will be presented in collaboration with other groups, including the choir of Trinity College (University of Melbourne), directed by Michael Leighton Jones and the Early Music Studio Baroque Ensemble and Early Voices (University of Melbourne), directed by Greg Dikmans.

If you are a lover of Bach, interested in fine music or believe you might like to attend a church service enriched by these glorious choral works you can find details of the 2012 program on the St John's website at [www.stjohnssouthgate.com.au](http://www.stjohnssouthgate.com.au) or you can phone the St Johns office on 9682 4995

YARRA'S  
**(EDGE)**  
MELBOURNE DOCKLANDS



## Cocooned at Papillon Day Spa

Papillon Day Spa is cocooned by the waterfront down at Yarra's Edge. You will be amazed by the stunning views and relaxing atmosphere.

The highly-trained and professional staff invite you to indulge yourself with the ultimate spa pampering experience. We offer luxurious private rooms for complete relaxation and wellbeing. Our professional therapists will customise any treatment to suit your exact needs. We will have you walking away feeling relaxed, rejuvenated and restored.

Choose from our extensive service offering that includes pamper packages, massage, tanning, facials, waxing, manicures and pedicures.

For December and January, on presentation of this ad, for just \$59, you can indulge in over an hour of blissful pampering, including:

- 30 minute full-body relaxation massage: Using a combination of Swedish and deep tissue techniques.
- 30 minute Thalgo facial: Your face will be glowing after a 30 minute facial with Thalgo products. Lovely!

## Discover Yarra's Edge

Yarra's Edge is located just across the Yarra from the ANZ building. Take a walk across award winning Webb Bridge to this truly undiscovered gem. This pristine neighbourhood, developed by Mirvac, boasts stunning apartments as well as luxury homes. Delightful dining opportunities and a beauty salon also make it well worth a visit on a beautiful day. Take advantage of the sunny north facing bank of the Yarra - it is there for you.

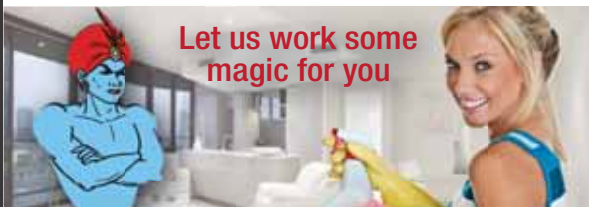
Apartments now selling: [yarrapoint.com](http://yarrapoint.com)  
Luxury homes now selling: [mirvacriver.com](http://mirvacriver.com)

### MAD DUCK CAFE



- Fully licensed cafe
  - Open seven days for breakfast & lunch
  - Catering & private functions available
- Check out our line of organic products:  
Bread • Coffee • Hot Chocolate • Teas • Juices
- 92 River Esplanade, Docklands.  
P: **9681 8882** E: [info@maddockcafe.com](mailto:info@maddockcafe.com)  
[www.maddockcafe.com](http://www.maddockcafe.com)

### APARTMENT GENIES



#### UNDER NEW MANAGEMENT

Your Docklands-based cleaner. Just set and forget and come home to a clean apartment.

- Cleaning - weekly, fortnightly or monthly
- Carpets steam cleaned
- Windows washed
- Fully insured
- Vacate cleans
- Spring cleans

86 Lorimer Street, Docklands.  
P: **9646 7996** E: [genies@genies.net.au](mailto:genies@genies.net.au)

### PAPILLON DAY SPA



At Papillon Day Spa you will be amazed by the stunning water views and relaxing atmosphere

- Pamper Packages
- Facials
- Massage
- Waxing
- Tanning
- Manicures & pedicures

84b River Esplanade, Yarra's Edge.  
P: **9681 7700**

### LUCAS REAL ESTATE



Lucas Real Estate is the leading Docklands agency with two prominent offices. Lucas Real Estate has the expertise to assist with all your property requirements. Open seven days.

62 River Esplanade, Docklands.  
Phone **0396451199** or NewQuay **0390911400**  
[www.lucasre.com.au](http://www.lucasre.com.au)

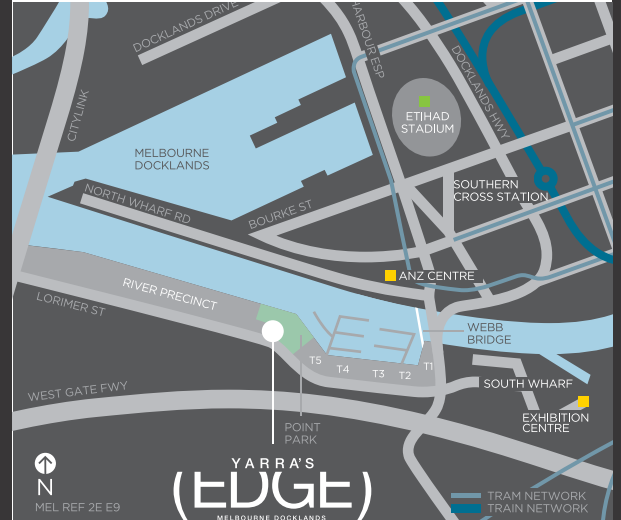
### KINYA



Kinya is one of Melbourne's most enviably located Japanese restaurants, nestled in the south Docklands precinct of Yarra's Edge.

70 Lorimer St, Docklands.  
P: **9646 2400**  
[www.kinya.com.au](http://www.kinya.com.au)

### YARRA'S EDGE



# Businesses in Southbank

SOUTHBANK-BASED BUSINESSES WISHING TO BE PROFILED IN THIS SECTION SHOULD EMAIL: [ADVERTISING@SOUTHBANKLOCALNEWS.COM.AU](mailto:ADVERTISING@SOUTHBANKLOCALNEWS.COM.AU)

## EAT WELL AND LOSE THE KILOS

*How would you like to lose those excess Christmas kilos without having to exercise yourself to exhaustion?*

It's not a gimmick, it is simply an understanding of nutritional science, says Travel Doctor Plus + clinic manager Jane Daniels.

The clinic's "Eat Well" program appeals equally to men and women with inner city apartment lifestyles, says Ms Daniels, and adds to the regular GP services and travel vaccinations and advice.

"Everybody has a focus on losing weight these days - even the government is pushing it," she said.

"Our program focuses on the key things: you do have to do some exercise - but not like most people think - but you really need to

focus on the diet/nutrition side of things.

"People don't understand the 'science' in food and eating."

The Eat Well program runs over 12 weeks and involves seeing a dietician four times in that period, weekly face-to-face contact with a nurse, and having milestones checked.

"We have 70 per cent meeting their goals, which include lowering cholesterol, being overweight, an incorrect diet etc," Ms Daniels said.

"Chloe McLeod is our dietician. You don't need a GP referral, you just ring and make an appointment."

Travel Doctor Plus + has male and female GPs, headed by Dr Verena Doolabh, and nurse Sarah Arkley.

The clinic also specialises in skin checks.

"And don't forget your flu vaccination, when we head into the flu season," Ms Daniels said.



Dr Verena Doolabh and Ms Jane Daniels

"I want to assure everyone in Southbank that you can come here for your travel health and general practice medicine. You don't have to go all the way into the city."

The Travel Doctor Plus + is located on the walkway next to the Medibank building at 700 Collins St, Docklands. It is open Monday to Friday from 8.30am-5pm, call 8622 6333 or go to [www.docklandsmedical.com.au](http://www.docklandsmedical.com.au)

## FACES OF SOUTHBANK



EVE GAILEY, 19  
Retail assistant at Timeless Watches

Eve enjoys working down by the river because it is so lovely and serene. She says DFO is a versatile shopping centre and it is great for visitors and locals alike. She also said the walk to work seemed to go so much faster, just because she was walking through such a nice area of the city.



KERRIE LYNCH, 49  
Manager at Warwick Jones

Kerrie has only been working in Southbank for two weeks, but compared with other DFOs she has worked at she already thinks this one is the best! She thinks it may have helped that everyone is on holidays, so the general vibe of the shopping centre is a very happy one.



MATTHEW HUTCHINGS, 24  
Manager at Stafford Direct

A great atmosphere makes DFO a good place to work, according to Matthew. There is a great mix of people, but it is never too busy like larger shopping centres. He also said that Southbank had a great range of quality food and bars, making it ideal to go out after work.



ALLAN ZABDAC, 20  
Casual sales assistant at Brooks

Allan enjoys being down by the water, so any part of Southbank is fine by him. The riverfront is open and spacious, which makes for a great walk or sit, both of which Allan likes. He also said the bars and restaurants are top class, and make the area even more desirable.



AHMAD JAZAYERI, 30  
Manager at Koala & Tree

The major advantage of being in Southbank is that you are so close to everything, Ahmad believes. The river, food, sports and the city are all at the doorstep, not to mention the great shopping. He is also very excited by the growth within Southbank, and knows the best is yet to come.



SANNI TERRY, 30  
Assistant manager at Howard's Storage World

Sanni loves working in South Wharf, both because the customers are friendly and fun and because she gets along really well with her housemates. She enjoys the relaxed atmosphere Southbank offers, and also fancies the restaurants.



# ON THE BOX

with Korey Fernando

## My 2012 picks

*Predictably, with the genesis of many digital-only stations last year, finding good-quality Australian programming is a bit like trying to find "Wally" in a sea of similarly-dressed men.*

In 2012, the television network heavies – desperately vying for the attention of the tech-savvy, web 2.0 mastering, 21st-century viewing audience – are trending towards “big event television”. This means less of the news and current affairs that were popular last year and more of the “people-pleasing” ilk of Scott Cam and his renovating band of

merry men. Personally, anything that isn't recycled jokes from the 80s and dated social commentary (I'm looking at you, Ben Elton) would be acceptable, but let's not hold our collective breath.

That said, good luck avoiding countless reruns of the only episode of *The Big Bang Theory* (that you caught by mistake while waiting for

Attenborough's latest polar adventure) and if you can spare a few moments away from your Google machines, be sure to look out for my top picks for the year:

The prodigal son of television, *Big Brother*, making his most likely unwanted return on the Nine Network, hosted by a recently network converted Sonia Kruger (network personality changeovers are given more attention than the AFL draft in my household).

The Nine network will also showcase the Australian version of last year's surprising ratings winner *The Voice*. Despite the reality-talent quest genre getting a fair work out in recent times with *Australian Idol*, *Australia's Got Talent* and *X Factor* (N\*SYNC star Joey Fatone's *The Singing Bee* is barely worth a

mention), Nine hopes to attract viewers with the likes of Keith Urban, Delta Goodrem, Joel Madden (from Good Charlotte) and Seal signing on to “coach”.

Channel Ten's *Biggest Loser* will revert back to its “singles” format from earlier years. Disturbingly, the program will incorporate a dating spin this season, which will no doubt horrify its audience in innovative, yet terrifying ways.

Channel 7 will also re-enter the television dating arena off the back of the lukewarmly successful *Dinner Date*, with *Please Marry My Boy* – a blind dinner date program which sees a group of pampered mummy's boys meet prospective life partners with their mums tagging along for the dates.

# SOUTHBANK COMMUNITY CALENDAR



### URBAN DISPLAY SUITE

December 28 - January 21

Melbourne Theatre Company,  
140 Southbank Boulevard

Urban Display Suite is a deliciously malicious musical satire on our national obsession with the property market. For more information:

[www.urbandisplaysuite.com](http://www.urbandisplaysuite.com)

### TRIBES

February 4 - March 14

Melbourne Theatre Company,  
140 Southbank Boulevard

This sharp-jabbing UK hit comedy by Nina Raine makes its Australian debut at the MTC's Sumner Theatre. Around this family's table, conversation is a struggle for attention. [info@mtc.com.au](mailto:info@mtc.com.au)

### THE WILD DUCK

February 17 - March 17

Malthouse Theatre, 113 Sturt Street

A bittersweet portrait of family dysfunction, deception and denial, 'The Wild Duck' resounds for a new age. Are there some truths it's better not to know? Contact: [www.malthousetheatre.com.au](http://www.malthousetheatre.com.au)

### I PACKED THE POSTCARD IN MY SUITCASE

December 21 - March 4

Australian Centre For Contemporary Art Inc., 113 Sturt Street

Prepare for a summer of bliss. Leading Swiss artist Pipilotti Rist floods ACCA's walls and ceilings with her trippy, psychedelic video projections.

[www.accaonline.org.au](http://www.accaonline.org.au)

### SIGNAL 37

January 15 - January 28

Flinders Walk, Northbank

Budding filmmakers, young writers, artists and music enthusiasts will get the chance to learn new skills as part of Signal 37, a free summer creative arts program.

[www.signal.net.au](http://www.signal.net.au)

### EAT, DRINK, WATER TAXI TO THE AUSTRALIAN OPEN

January 16 - January 30

Bear Brass, 3 Southgate Avenue

Enjoy a delicious breakfast, lunch or early dinner at Bear Brass, then ride along the Yarra on a Melbourne water taxi to Rod Laver Arena.

### SUNDAY EUCHARIST (FEAST OF THE PURIFICATION)

Sunday, February 5, 9am

St Johns Southgate Lutheran Church  
20 City Road

St Johns Bach Choir and Orchestra for 3 soloists, choir, strings, 2 oboes, 2 horns and continuo. Contact [stjohnssouthgate@internode.on.net](mailto:stjohnssouthgate@internode.on.net) or 9682 4995

### MELBOURNE NIGHT PHOTOGRAPHY WORKSHOPS

Tuesdays and Thursdays, 6pm-8pm

3 Southbank Promenade

This night photography class runs in Melbourne's city centre and has all the night photography tips you'll ever need. For more info:

[www.pennykoukoulas.com](http://www.pennykoukoulas.com)

### ARTS CENTRE SUNDAY MARKET

Sundays, 10am-4pm

Arts Centre 100 St Kilda Road

Meet over 80 of Victoria's finest artisans first hand. Discover how these unique artworks are made, chat directly about the products, inspirations and techniques. For more information:

[www.theartscentre.com.au](http://www.theartscentre.com.au)

### CHUNKY MOVE DANCE CLASSES

Mondays to Thursdays 6.30pm-8pm,  
Saturdays 10am-1.15pm

111 Sturt Street

Chunky Move dance classes are the perfect way to unwind, get fit and improve flexibility and strength. For more info:

[www.chunkymove.com](http://www.chunkymove.com)

### SUMMER OF THE SEVENTEENTH DOLL

January 12 - February 18

Playhouse, 100 St Kilda Road

This Melbourne based classic by Ray Lawler is a cornerstone of Australian drama. This story of shattered illusions has been revived many times, but never with such imagination as in Neil Armfield's new production. Contact [www.mtc.com.au](http://www.mtc.com.au)

### ANGELINA BALLERINA'S BIG AUDITION

January 24 - January 28

State Theatre, 100 St Kilda Road

Angelina Ballerina is returning to the State Theatre with her second live ballet. Performed by the Royal New Zealand Ballet, 'Angelina Ballerina's Big Audition' is the perfect introduction for children to the magical world of dance.



### FREE TAI CHI IN SOUTHBANK

Every Friday, 8am - 9am

Queensbridge Square

Because of the lack of open and recreations space on Southbank, the Melbourne City Council has funded weekly Tai Chi classes on Southbank. The instructor, provided by Tai Chi Australia structures a class that is suitable for beginners and all ages.

### CAUTIONARY TALES FOR CHILDREN

February 4 - February 7

Fairfax studio, 100 St Kilda Road

A lyrical satirical cabaret at which you may lose your head entirely – learning lessons about good behaviour has never been so absurd and amusing. Contact:

[www.artscentremelbourne.com.au](http://www.artscentremelbourne.com.au)

### MUSICPLAY FESTIVAL

January 18 - January 22

Fairfax studio, 100 St Kilda Road

Discover a world of music with your kids this summer at Melbourne Recital Centre's MusicPlay Festival. Listen, dance, learn and play at an array of concerts and musical activities that will entertain and engage the entire family.

# BUSINESS DIRECTORY

If you are not on this list then email [advertising@southbanklocalnews.com.au](mailto:advertising@southbanklocalnews.com.au) or phone 8689 7980 to discuss how you can get on this list for FREE!!

## ATTRACTIONS



An experience above all else

**eureka skydeck 88**

Open 10am until 10pm Daily (last entry 9.30pm)  
Riverside Quay Southbank Melbourne Australia  
[www.eurekaskydeck.com.au](http://www.eurekaskydeck.com.au) 03 9693 8888

## GRAPHIC DESIGN



**mediationcommunications**

**Web specialists**

108/198 HARBOUR ESPLANADE DOCKLANDS 3008  
P +61 3 9602 2992 / F +61 3 9602 2929  
[WWW.MEDIACOMMS.COM.AU](http://WWW.MEDIACOMMS.COM.AU)

## PETCARE

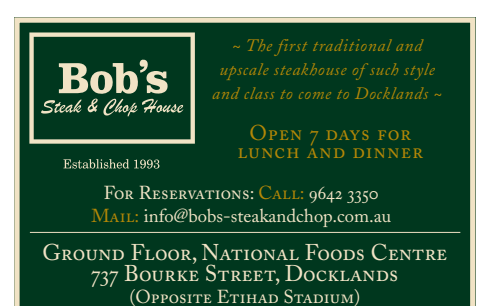


**PETstock**  
... part of your family!

**...for all your pet care needs**

**PETstock Sth Melbourne**  
211 Ferrars St, (03) 9699 4234

## RESTAURANTS, CAFES & BARS



**Bob's Steak & Chop House**

~ The first traditional and upscale steakhouse of such style and class to come to Docklands ~

OPEN 7 DAYS FOR LUNCH AND DINNER

Established 1993

FOR RESERVATIONS: CALL: 9642 3350  
MAIL: [info@bobs-steakandchop.com.au](mailto:info@bobs-steakandchop.com.au)

GROUND FLOOR, NATIONAL FOODS CENTRE  
737 BOURKE STREET, DOCKLANDS  
(OPPOSITE ETIHAD STADIUM)

## COMPUTERS



**DOCKCOM**  
DOCKLANDS COMPUTER SPECIALIST AND IT CONSULTANT

Level 2 / 710 Collins St, Docklands, Victoria 3008

Call: (03) 9008 7908

[WWW.DOCKCOM.COM.AU](http://WWW.DOCKCOM.COM.AU)  
VISIT ONLINE COMPUTER STORE

## MARRIAGE CELEBRANT

*'Links of Love'*



Affordable Ceremony

Mr. Jan Gielnik cmc  
Mob: 0417 011 086  
[www.affordableceremony.com.au](http://www.affordableceremony.com.au)

## PHOTO RESTORATION



**MEMORIES** GRAPHIC DESIGN

• Restoration • Preservation • Presentation

Family Memoirs      Birthday Celebrations  
Weddings              Anniversaries  
Tributes/Memorials      Word Processing  
Image Processing      Photography

Telephone: 0414 456 205  
Email: [davidbeech@me.com](mailto:davidbeech@me.com)



**THE COLONIAL TRAMCAR RESTAURANT**

If you are looking for the ideal gift, visit our website [www.tramrestaurant.com.au](http://www.tramrestaurant.com.au) or telephone 9696 4000

## HEALTH




**healthy ambition**  
PERSONAL TRAINING

Personal training  
Group & Corporate Fitness  
Mobile training  
Nutrition




[www.healthyambition.com.au](http://www.healthyambition.com.au)  
68 Rebecca Walk, Batman Park, Phone: 1300 526 933



**Roath**  
• CELEBRATIONS •  
Wedding Celebrants

Your Wedding - Special to you, Special to us.



[www.roathcelebrations.com](http://www.roathcelebrations.com) | P: 0411 544241 or 0402 787 409

## REAL ESTATE



**evolve**  
REAL ESTATE

9690 8800

25 Queensbridge Street, Southbank VIC 3006  
[www.evolverealestate.com.au](http://www.evolverealestate.com.au)

## SERVICED OFFICES

World's Finest Office Solutions

- Premium unbranded office facilities
- Dedicated receptionist
- Full time or temporary workspace
- Boardrooms & meeting rooms
- Global network of business lounges
- No long term commitments

T | 9982 4527  
[melbourne@servcorp.com.au](mailto:melbourne@servcorp.com.au)



RIVERSIDE QUAY SOUTHBANK | DOCKLANDS | MELBOURNE CBD

## HOUSE CLEANING




**Butterfly Cleaning**

Cleaning  
Organising  
Ironing  
Reliable  
Good references

0410 423 565

ENVIRONMENTALLY FRIENDLY PRODUCTS



**Travel Doctor Plus+**  
Docklands Medical & Lifestyle Clinic

Level 4, 700 Collins Street, Docklands

Open Monday to Friday 8.30am - 5.00pm  
8622 6333 | [docklands@traveldoctor.com.au](mailto:docklands@traveldoctor.com.au)



**prima pearl**  
THE GEM IN APARTMENT LIVING



ph 8638 1888 or visit [primapearl.com.au](http://primapearl.com.au)

## SUPERMARKET



**GROCERIES EXPRESS**

WE ARE YOUR LOCAL GROCER!

182 City Road, SOUTHBANK  
P: 9686 1561



Looking for something?

**Southbank Directory .com.au**

What to do      Where to stay      Where to Eat / Drink      Beauty, Health & Fitness      Southbank Services      Where to Shop

• RESIDENTIAL • PROPERTY MANAGEMENT • COMMERCIAL



PROPERTY OWNERS

For many years Southbank has continued to steal the limelight as a prominent gateway to Melbourne's CBD.

Our successful team has a close relationship with Southbank, and many of its residents.

It is our relationship, along with our detailed knowledge of the Southbank area, that enables us to continue providing a platinum service to our clients.

Come and see how we can make a difference to the sale of your property with our proven marketing strategies and professional service.

You can be sure that your asset is in safe hands with us.

Contact our award-winning sales team on **9690 8800**, or [info@evolverealestate.com.au](mailto:info@evolverealestate.com.au).

FOR SALE



Level 53/1 Queensbridge Street, **SOUTHBANK**  
DESIGNER LIVING OF THE HIGHEST CALIBRE

4 3 2

Set in one of Southbank's most revered locations, this splendid high-rise apartment presents immaculate entertaining spaces, tranquil surrounds and quality amenities.

FOR SALE



1001/8 Kavanagh Street, **SOUTHBANK**  
THE NEW STANDARD OF LUXURY

2 2 1

Situated in the ever-popular Arts Centre Precinct is this delightful 110m<sup>2</sup> residence, offering a standard of living that is second to none. An endless list of features await you.

FOR SALE



3310/1 Freshwater Place, **SOUTHBANK**  
IDEAL INVESTMENT OPPORTUNITY

1 1

On the 33rd Floor in one of the city's best developments, Freshwater Place, is this 1 Bedroom apartment with vast views of Port Phillip Bay and to the West & North-West of Melbourne.

FOR SALE



802/8 Kavanagh Street, **SOUTHBANK**  
TRIPTYCH - LUXURY LIVING AT BEST PRICE!

2 2 1

In one of Melbourne's finest buildings, & Winner of the 2011 UDIA Awards for excellence is this modern & attractive apartment, with expansive views of the Botanical Gardens & East of Melbourne.

FOR SALE



3302/200 Spencer Street, **MELBOURNE**  
ENJOY THE INNER-CITY LIFESTYLE

2 1

With a generous size of approximately 84sq with balcony, this property would be suited to investors, students, new families, and also purchasers wishing to enjoy a change in scenery.

FOR SALE



4509/1 Queensbridge Square, **SOUTHBANK**  
LUXURY LIVING AND STYLE!

1 1 1

This large 1 bedroom apartment with Study offers executive living at its finest with floor to ceiling views across the Yarra and Port Phillip Bay. Spacious open-plan living and more.

FOR SALE



1102/283 City Road, **SOUTHBANK**  
EXPANSIVE VIEWS, EXCELLENT LOCATION

2 1

Located in a very prominent position, with outstanding views of the City & Botanical Gardens is this splendid 2 Bedroom apartment with room to move. Brand new!

FOR SALE



105 Kinnear Road, Mickleham,  
19 ACRES OF PURE LIFESTYLE LIVING

2 1 1

Well maintained by a proud hobby farmer with an eye for detail, this grand allotment provides significant scope for a variety of uses (STCA).

WANTED TO BUY

APARTMENTS

- 4 3 2 Southbank
- 3 2 2 Under \$900,000
- 2 2 2 Under \$700,000
- 1 2 1 \$500,000

RENTALS

- 3302/200 Spencer Street - \$670 p/w  
2 Bed 1 Bath 1 Car
- 4502/1 Queensbridge Square - \$700 p/w  
1 Bed 1 Bath 1 Car
- 1001/8 Kavanagh Street - \$900 p/w  
2 Bed 2 Bath 1 Car
- 2506/83 Queensbridge Street - \$1200 p/w  
3 Bed 2 Bath 2 Car

FOR SALE



299/100 Kavanagh Street, **SOUTHBANK**  
TOP-FLOOR, PENTHOUSE-STYLE

3 2 2

Comprising of Three comfortable bedrooms with BIR's, Open-Plan Kitchen/Meals/Lounge area, Bathroom, Laundry & Two Undercover Car Spaces

FOR SALE



1002/109 Clarendon Street, **SOUTHBANK**  
SOUTHBANK STYLE - MARVELLOUS VIEWS

2 1

Wonderfully presented, & offering a great rental return is this delightful residence on the 10th Floor of one of Southbank's newest developments.

OFF THE PLAN

- Docklands** - Apartments - 1 BR - 3 BR  
\$410k - \$1.1m - Ready End 2013
- Southbank** - Apartments - 1 BR - 2 BR  
\$375k - 750k - Ready May 2013
- South Melbourne** - Apartments - 1 BR - 2 BR +  
Study - \$405k - \$842k - Ready Mid 2013
- North Melbourne** - Apartments - 1 BR - 2 BR  
\$392k - \$574k - Ready October 2012
- Prahran** - Apartments - 1 BR - 3 BR  
\$365k - \$865k - Ready Early 2013
- Malvern** - Apartments - 1 BR - 3 BR  
\$415k - \$1.1m - Ready September 2012
- Elwood** - Apartments - 1 BR - 3 BR  
\$517k - \$950k - Ready July 2012
- Footscray** - Apartments - 1 BR - 2 BR  
\$301k - \$476k - Ready Soon
- West Footscray** - Apartments - 1 BR - 2 BR  
\$295k - \$489k - Ready May 2013
- Travancore** - 1 BR - 2 BR  
\$495k - \$625k - Ready End 2012