

The voice of Southbank

SOUTHBANK Local NEWS

■ City living available to all

See page 3

■ VCA turns 40

See page 5



■ Luck of the Irish

See page 4

■ Students break the mold

See page 7



Marvellous Moomba's big move



Moomba made a triumphant return to Melbourne this year and the parade was brilliantly attended along its temporary route on St Kilda Road.

The time-honoured parade had all the colour we've come to expect from Moomba, and the theme this year of "Melbourne is delicious" made for some unique costume designs.

Lord Mayor Robert Doyle wasn't surprised the event was able to attract record crowds this year, and attributed some of that to the new St Kilda Rd route.

"This year's Moomba was a testament to the diversity and imagination of Melbourne. With a fantastic musical line up, great water skiing, activities for the kids, perfect Melbourne weather and a new parade route along St Kilda Road, it's little wonder that Moomba 2012 attracted record crowds," Cr Doyle said.

He went on explain just how valuable Moomba was to our local economy.

"Moomba has become Australia's largest community event, it generates more than \$29 million for the local economy and attracts over 1 million people over the Moomba weekend," Cr Doyle said.

St Kilda Rd has had an endless stream of activity, having become the temporary home for many events that would usually be held on Swanston St.

The outstanding crowds and atmosphere will surely have the City of Melbourne considering a permanent move.

Photo courtesy of Lucas Dawson 2012.

FOODWORKS
Works for me!



WE ARE YOUR
LOCAL GROCER!
182 City Road, SOUTHBANK

Suite 108, 198 Harbour Esplanade
PO Box 23008 Docklands 8012
Tel: 8689 7980 Fax: 9602 2929
www.southbanklocalnews.com.au

Editor: Sean Rogasch

Advertising Manager: Greg Hackett

Tel: 8689 7980 Fax: 9602 2929
advertising@southbanklocalnews.com.au

Reader contributions are welcome.
Please send articles and images to
news@southbanklocalnews.com.au

Deadline for the April edition is March 15.

CONNECT

Keep up to date with local news & events.



Follow us on Twitter
[@SOUTHBANK_News](https://twitter.com/SOUTHBANK_News)



Like us on Facebook
Southbank Local News

Politicians meet residents

Legislative Council members Angela Coote and Georgie Crozier met with furious Freshwater Place residents this month, to discuss their angst towards the proposed Queensbridge tower.

As reported in last month's Southbank Local News, the residents have been campaigning to have the proposal rejected, as they believe the tower is not appropriate for the planned location.

Ms Coote said they had organised a lengthy chat with the residents, as she knew the current had particularly riled many of them.

She said of the proposed tower: "I've probably had more representation in letters from your group than any other," and added that planning was: "The single issue that gets more anger and comment than any other."

The meeting was attended by about 20 residents, and included a formal presentation from Freshwater Place owners' corporate chair Peter Renner, to which Ms Coote and Ms Crozier responded, before taking questions.

The residents were vocal and passionate in getting their points across to the MLCs, and Ms Coote told them she sympathised with their situation.

"I have no doubt the issues you have raised are true and valid," she told them, adding: "I think it's important to take up this issue - your presentation is very good."

Ms Crozier concurred, saying: "Certainly there are some concerns that we are very appreciative to hear about in a presentation like this."



Throughout his presentation, Mr Renner was adamant that this sort of planning had to be stopped before more of it is seen in the area, saying: "If this is built now it will be open slather for Southbank."

"We think Southbank should be mid-rise with a smattering of high-rise. We think that would be fantastic," Mr Renner added.

He also had some strong words for the City of Melbourne, saying: "We are not very happy with the Melbourne City Council, we believe

they have betrayed us and, completely abandoned us."

The two parliamentarians said they would pass on the concerns they had heard to the Minister for Planning Matthew Guy, but Ms Coote said it was important that proper process be respected at all times.

"It is important to remember that there is a planning process. The process is there for a reason," Ms Coote said.

La Camera Southgate's Community Night Calendar 2012

- March 26th: Opera Challenge ***
- April 30th: Jazz & Shiraz**
- May 28th: Community Night 5th Birthday, Pianist**
- June 25th: Opera Challenge ***
- July 30th: Classical String Trio**
- August 27th: Acoustic Night and Italian Yum Cha**
- September 24th: Jazz & Shiraz**
- October 29th: Opera Challenge ***
- November 26th: End of Year Party**

25% OFF your food bill
(up to the value of \$75) for all members and local residents on Monday nights. Opera Challenge nights not included.



Major Sponsors



Pick up your VIP card anytime in March or April

www.lacamerasouthgate.com
p: 9699 3600 e: eat@lacamerasouthgate.com

*No discounts available on these selected nights.

FREE GIFT!

Introducing Melbourne's newest boutique Adult Store in the heart of South Melbourne.



Return or mention this ad to Sexy Secrets between March - June 2012, spend \$30 or more and you will receive your choice of one of our selected gifts absolutely **FREE** (valued at \$15).

www.sexysecretshop.com.au

185 Clarendon Street
(near Just Tools)

Ph: **03 9696 7399**

Open 7 days til late

City living available to all

The former J.H. Boyd Girls' School site's future became clearer last month, as a new disabled-friendly residential development was announced.

The new development is set to help Southbank and its surrounds become more accessible for people with a disability with the creation of the new residential tower to be built by The Mackie Group.

The site and development of Cairo was decided in conjunction with the City of Melbourne, Haven; Home, Safe and a consortium of community agencies including Scope and MS Australia to ensure it is ideally set up for all tenants.

Tenants are expected to include people with a disability, students, city workers, young professionals and retirees.

One such person is Will Anderson, a former soldier, who suffered a brain injury and was left blind after a training accident.

He hopes to be among the first residents to move into the state-of-the-art building and is excited about living so close to the city.

Mr Anderson also knows how this kind of development can help people with a disability.

"I think it's (Cairo) so important for people like myself who have been injured. I'll be living with other former soldiers and people with disabilities and often it's all in the mind. We can help each other out, living together," Mr Anderson said.

He is clearly excited about this opportunity, adding: "It's been difficult for my parents because there are no other options for living like this."

Lord Mayor Robert Doyle agrees with the advantages of such a fantastic location, saying: "This is rolled-gold accommodation. An address to die for."

"This is not about mobility access. This is about housing for people with a disability. Affordable housing in the middle of the city," Cr Doyle said.

Cr Doyle also explained the council's anticipation for the project.

"We think this development is a world first, so we are remarkably excited," adding: "I can't wait for construction to start."

He went on to explain the importance of the site for the city and, more specifically, for Southbank.



"The site will provide much-needed open space for Southbank, a community that needs open space imminently," he said.

Mackie Group CEO Ralph Mackie was equally enthusiastic about the development saying he was well aware of the importance of the high-profile site and wanted to create a thriving village centre.

"The building will provide an exciting blend of social and housing diversity, with a mix of residential apartments, key worker housing and housing for young people with an acquired or life-long disability," Mr Mackie said.

He was also aware of the benefits the new building would provide Southbank, saying: "The inclusion of the Cairo residential tower on the J.H. Boyd site will provide Southbank with a fully integrated 'neighbourhood heart' and complement the community's art, social and family health facilities."

"We hope it will be a beacon for the

Southbank community and a model that other councils will adopt," Mr Mackie said.

Community group Young People in Nursing Homes National Alliance is one of the groups to have backed the development. National director Dr Browyn Morkham said the accommodation was an exciting chance for people with a disability.

"Apartment living, in concert with Cairo's onsite support, will enable young people with disabilities to access the city's cultural, social and economic opportunities to the full," Dr Morkham said.

Cr Doyle summed up the new facility, saying: "This is a remarkable partnership between the city, community groups and the private sector."

"It's pleasing to have the future of the site close to being finalised with City of Melbourne's conversion of the adjacent heritage school building into a community library and civic centre already well underway."

Festival will have us laughing

Southbank may be starting to feel festival-fatigue.

On the back of the Melbourne Food and Wine Festival, the Melbourne International Comedy Festival was launched at the Spiegeltent in Southbank last month.

The laugh-fest was officially launched by Lord Mayor Robert Doyle and Premier Ted Baillieu who, despite being in India at the time of the launch, sent a postcard to the festival.

The festival, now in its 26th year, includes 400 events across 129 venues. It is expected that 500,000 people will visit for the world-famous event.

The spiegeltent at the Arts Centre will act as one of these venues, with performances from Bob Downe, Die Roten Punkte and the Wau Wau sisters.

Via his postcard, Premier Baillieu said both Australian and Indian cultures knew the importance of having a good laugh.

"Like all of us involved with the Melbourne International Comedy Festival, over here they understand the benefits of having a good laugh – for mind, body and soul," Premier Baillieu said.

"If we have any time left at the end of our trade mission, I'll insist that the entire Victorian delegation joins me for a session, so that we're limbered up and ready for the festival's opening on March 28."

Festival director Susan Provan can't wait for the festival to begin, saying: "Our favourite, well-established local comedians will bring us the fruit of their past year's work in new shows bound to please fans and the best international comedians we could find will land to present work that's been reaping acclaim in clubs, festivals and theatres on the other side of the world."

"As ever too, audiences will discover loads of new and exciting entertainers, completely fresh to the scene. We can't wait for the city to be buzzing with that festival energy," Ms Provan added.

BOB'S... MORE THAN A STEAKHOUSE!

CONFERENCES

MEETING ROOMS

TRAINING SESSIONS

WEDDINGS

CELEBRATIONS & MORE...

*Come to Bob's & you'll see
why we are a cut above the rest!*

Bob's
Steak & Chop House

Established 1993

(04) 32 209 369 for Functions / PDR
9642 3350 for Restaurant Reservations

www.bobs-steakandchop.com.au

737 Bourke Street, Docklands
(Opp. Gate 3, Etihad Stadium)

BREAKFAST, LUNCH & DINNER



St Patrick's day celebrations

They say it's not easy being green, but it sure looked fun this month as a huge crowd gathered to celebrate St Patricks Day at Southbank's own Irish pub, PJ O'Briens.

The revellers were entertained with traditional Irish dancers, as well as bagpipe performances and live music.

The party started at 9am, with a special breakfast and it went long into the evening on March 17.

Food and wine festival overcomes soggy start

The Melbourne Food and Wine Festival's riverside opening weekend didn't go exactly to plan, but organisers are still very buoyant about the results.

The weekend got off to a great start on Friday with the traditional long lunch but spirits were dampened on Saturday when it continually rained throughout the day. Not to be defeated, all the events persisted throughout the downpour and awoke on sunny Sunday triumphant as many events had larger than expected crowds.

Melbourne Food and Wine CEO Natalie O'Brien said the opening weekend really matched well with the location.

"We think the river is the perfect venue. Many of our existing partners we work with are already down there, and it's a great chance for new partners to emerge," Ms O'Brien said.

The size of the lower Yarra stretch used for the weekend was also an advantage, with Ms O'Brien saying: "One of the things about the festival is we're not in one venue with doors or a roof or a gate. We're all about the adventure."

She admitted the rain had not been ideal, saying: "It certainly affected numbers, but we redeemed ourselves on the next day with

people getting out and about and into the spirit of the weekend."

"We are very happy with the success of the weekend," Ms O'Brien concluded.

Yarra River Business Association president John Ahern agreed that the weekend was fantastic and that Southbank was ideal for this kind of event.

"The weekend strongly reinforced awareness among Melburnians that the lower Yarra River is a Mecca for both serious and casual dining, and it probably highlighted its credentials to a whole new generation of foodies," Mr Ahern said.

Mr Ahern also said a lot was owed to the organisers: "We must congratulate and applaud the huge job done by the festival management and by Peter Jones Events to bring the river alive."

Although the MFWF has not locked in the river as the long-term location for the Riverside Opening Weekend, it will be held in the same locations next year, and many traders will be hoping for many more years too.





kingpin BOWLING

drink, bowl, party!

STATE-OF-THE-ART BOWLING LANES • INDOOR LASER SKIRMISH ARENA
POOL TABLES • 3 FULLY LICENSED BARS • THE LATEST ARCADE, VIDEO & PRIZE GAMES

OPEN 7 DAYS • 10AM - 2AM

DON'T FORGET... \$10 BOWLING!

9pm - 2am every Tuesday...

Ground floor, Crown Entertainment Complex • Call 13-BOWL (13-2695) • www.kingpinbowling.com.au

PRESENT THIS VOUCHER:

Buy one full priced game of bowling and receive 1 FREE drink of either local tap beer, house wine or soft drink

Valid Monday - Wednesday 6pm till close
• One voucher per person
• Original voucher only accepted
• Voucher expires 2/5/2012

kingpin BOWLING

VCA to celebrate 40th birthday

The Victorian College of the Arts is about to celebrate a milestone, with a street party to be held for its 40th anniversary on March 23.



The landmark is significant for all at the college but maybe even more so for current head of art, Jan Murray, who has been in and around the college since 1980.

Ms Murray started as a student in 1980, before returning to teach in 1983. She says despite the physical grounds having changed quite considerably over that time, the ethos of the school remains the same.

“The qualities we value, we have nurtured them and they have followed right through. We have been able to maintain those elements all the way through, despite having grown,” Ms Murray said.

The physical changes have been varied, most notably, Jan says, have been the studio movements and growth.

“When I was a student here, our studios were behind the horse stables and they have

definitely become more established since then,” she said.

“The arts school (where she works) used to be behind the art gallery. We’ve expanded and geographically moved,” Ms Murray added.

“While it’s grown, Lenton Parr’s initial idea for the college has flourished and I think it continues to flourish,” Ms Murray exclaimed proudly. Lenton Parr was the founding dean of the VCA and after whom its library is now named.

Ms Murray said the treatment of its students is what sets the VCA apart, saying: “The thing that identifies us are the issues of one-to-one and the studio model – everyone gets a studio and they’re treated like an artist.”

In the art faculty particularly, students having their own studio is seen as a fantastic



pathway into the reality of the real world.

“We offer everyone a studio space. It gives them the understanding and knowledge to have their own practice. In a way it’s an embodied experience to work in a studio,” Ms Murray said.

She believes this is one of the main reasons her students are showing more initiative than ever before.

“Students come to us and they’re already showing. In the old days you used to wait until you were tapped on the shoulder. It’s not like that anymore,” she said.

There have been other teaching changes according to Ms Murray over the course of the last 40 years.

“I think it’s less casual. The student staff ratios were more generous. I think the staff were more casual, but I think that it’s just mirroring

the way the world’s turned,” she said.

This may also have to do with the growth in numbers over the years, but Ms Murray said no matter how many students the school had, a special sense of belonging remained.

“The intimacy has always been there. The family of VCA always keeps a sense of community. When you become part of that it is a special thing,” she said.

The VCA will be hoping that sense of community brings out plenty of people for the 40th anniversary street party. It is hoping to attract both alumni and general public, and the party kicks off from 4pm at Dodds St.

[Comment on this story online:
www.southbanklocalnews.com.au](http://www.southbanklocalnews.com.au)



Specials available daily!
Wide variety of groceries!
Fresh fruit and veg daily!
Large choice of alcohol

FOODWORKS
Works for me!

182 City Road
SOUTHBANK

WE ARE YOUR
LOCAL GROCER!



Open 7 days, 7am - 11pm

P: 9686 1561 F: 9696 9760



Southbank 32/79 Whiteman Street
SPACIOUS WITH TERRACE

1 1 1

Private Sale \$430,000

Inspect By appointment

This immaculate apartment comp bamboo timber flooring and is conveniently located within easy reach of the nearby CBD, Southbank Promenade and cosmopolitan South Melbourne, ensuring its suitability for investors and owner-occupiers alike. Features include: Secure car space, reverse-cycle heating/cooling in living area, laundry facilities in bathroom (dryer included), tram stop on the doorstep, impressive building facilities include a heated indoor swimming pool, tennis court, gym, BBQ terrace. Richard Mindraoui 0437 250 964



Southbank 2107/63 Whiteman St
GREAT LOCATION TO LIVE OR INVEST

1 1 1

Private Sale \$410,000

Inspect By appointment

Located on the 21st floor is, this great quality huge 1 bedroom 1 Bathroom 1 Car Space superb condition apartment. Includes Modern kitchen fittings, stainless steel Miele appliances including cook-top, oven, range-hood and dishwasher. This near new apartment has a generous size bedroom with BIRs. Included also, video intercom and resort style facilities. VUE GRANDE Southbank is situated within walking distance to Melbourne CBD, Southbank Promenade and restaurants Richard Mindraoui 0437 250 964



Southbank 1203/109 Clarendon Street EXCELLENT AND AFFORDABLE

2 1 1

Private Sale \$450,000

Inspect By appointment

Near new city pad within walking distance to Crown casino and Southbank promenade. Functional floor plan includes fitted kitchen with stainless steel appliances, and ample cupboard space. Good size bedroom with two way ensuite and a second room which could be used as a large study or optional second bedroom. Secure under cover car park and the use of a fully equipped gym and spa pool.

Richard Mindraoui
0437 250 964



Melbourne 3602/288 Spencer Street
NO.1 FOR LOCATION & VIEWS

2 1 1

Private Sale \$570,000

Inspect By appointment

This luxurious & spacious near new two bedroom apartment located on the top floor in the newly completed Atlantis building comes fully furnished and presents the latest in inner city living. The unit features a modern kitchen with stainless steel appliances and ample cupboard space that opens to a dining/living area which leads to a balcony with spectacular bay and Dockland views. This apartment is great for an investment or perfect for someone just starting out in Melbourne.

Lina D' Ambrosio
0430 929 851



Southbank 1507 - 8 Kavanagh Street Southbank

TRIPTYCH WILL AMAZE YOU

2 2 1

Private Sale \$1,200,000

Inspect By appointment

Triptych invites you home to the heart of the Melbourne Arts & Cultural precinct. This apartment offers the comforts of 138sqm of north facing luxury living. Comprising 2 bedrooms + study, 2 bathrooms, 7sqm balcony, bamboo timber flooring, miele appliances, secure car park, storage unit and features vertical garden and podium roof top garden.

This is a must see.

For a private inspection contact Richard Mindraoui 0437 250 964



Southbank 187/88 Southbank Boulevard, Southbank

3 BEDROOM WITH A VIEW

3 2 1

Private Sale \$638,000

Inspect By appointment

Fantastic fully refurbished, three bedroom apartment located on the 18th floor with great views, offers the discerning buyer the comforts of three large bedrooms, light filled open plan living leading to a good size balcony with great views. Features include secure under cover car park, secure entry, heating and cooling, resort style facilities including indoor heated pool, spa, sauna, gym, tennis court, and BBQ area. The building is located in the heart of Southbank close to world class cafes and restaurants. Richard Mindraoui 0437 250 964



Melbourne 210/505 St Kilda Road
LUXURIOUS & BRAND NEW!

2 1 1

Private sale \$820,000

Inspect By appointment

Absolutely stunning! This generous sized two bedroom apartment features fabulous modern kitchen with Gaggenau stainless steel appliances, gas and electric cooking, stainless steel fridge & dishwasher, ample cupboard space, open plan living and dining with floor to ceiling windows allowing loads of natural light. Main bedroom with built-in-robos and Italian tiling throughout. Second bedroom is also generous in size and has built-in-robos.

Lina D' Ambrosio
0430 929 851



Melbourne 617/53 Spencer Street
A SPECIAL VICTORIAN APARTMENT SURE TO IMPRESS

3 2 2

Private sale \$920,000

Inspect By appointment

Magnificent Victorian sub Penthouse apartment approximately 140sqm situated at Grand Central Apartments, surely Melbourne's best example of Residential Victorian. Beautifully maintained throughout comprising of three massive bedrooms, superb formal living and dining, well appointed kitchen, two bathrooms, incredibly high ceilings, large west facing balcony overlooking Docklands and two undercover car parks.

Richard Mindraoui
0437 250 964



Docklands 262/55 Victoria Harbour Promenade

WORTH EVERY MILLION

3 3 3

Private sale \$1.8 mil

Inspect By appointment

Imagine yourself living in this luxury two storey sub penthouse on the 26th floor at Dock 5 premier and award winning development. Boasting 3 spacious bedrooms (all with ensuite's) plus study, 2 bathrooms plus additional powder room and an expansive open plan kitchen / dining / living area, surrounded by floor to ceiling windows. This prestige apartment features white marble bench tops, butlers pantry, stone floors, and billiard bar room, storage room and wine cellar. Glenn Donnelly 0419 998 235

50 Lorimer Street, Docklands

www.cityresidential.com.au

For all your real estate needs, including a no obligation FREE market appraisal on your property, feel free to contact one of our agents

P: 8614 8999

Students break the mold

It's well documented that Southbank has a big student population, but that doesn't necessarily tell you much about our age demographic.

Take Pat and Lance Collins for example. They are more mature than the typical university student, and they attend the University of the Third Age (U3A), which is not your typical university.

U3A is situated in Flinders Lane in the CBD, which makes for a casual stroll for Pat and Lance, who are surprised with the number of people is Southbank who have not heard of the facility so close to home.

"When you know about U3A, you take it for granted that everyone else does too," Pat exclaimed, adding: "But recently I've spoken to neighbours who have never heard of it."

Southbank only provides 23 of the centre's 900 members, a number that Pat is astounded by.

"I really encourage Southbank retirees to take advantage of this great amenity only a stone's throw away," Pat said.

There are a number of different courses available to attendees, and they are also always in need of volunteers. Pat and Lance have both studied and served as volunteers for the centre.

[Comment on this story online:
www.southbanklocalnews.com.au](http://www.southbanklocalnews.com.au)



MCEC takes home award

The Melbourne Convention and Exhibition Centre (MCEC) won its second consecutive In-house AV Services award during March, at the Victorian Meetings and Events Australia Awards which was, coincidentally, held at the MCEC.

The award for In-house AV services is assessed across criteria that included business and financial plans, marketing activities, sustainability and innovation.

The award means MCEC has qualified for the national awards, with winners to be revealed on April 24.

MCEC chief executive Peter King noted the importance of the awards and said he was thrilled to receive the honour.

"The MEA awards are highly regarded within industry and it's a great honour to receive this recognition," Mr King said.

Southbank open for holidays

Southbank will be a Mecca for kids in the Easter school holidays with the City of Melbourne announcing a number of activities available.

Signal is again providing some fantastic artistic outlets for kids, with its street art workshops to run over the holidays. Located on Northbank, Signal courses are for kids aged 13 to 20.

A Mad Hatter-themed tea party will be held out the front of Southgate in April. The area is set to be transformed into the Alice in Wonderland storybook and will welcome the whole family to dress up in the Mad Hatter theme and get involved. The party is to celebrate Easter and will run from April 7 to 9.

The Arts Centre will hold a special workshop during the holidays as senior Boon Wurrung

elder Aunty Carolyn Briggs and Idja Dance Theatre artistic director Jacob Boehme invite all to come and learn, sing and dance the stories of the Boon Wurrung.

The Boon Wurrung is one of five language groups of the Eastern Kulin Nation. It is also the traditional name of the indigenous people who lived south of the Yarra.

There are plenty more activities in and around Melbourne during the break, so if you're looking for entertainment make sure you check out the City of Melbourne's website www.melbourne.vic.gov.au/whatson.



VIRTUAL OFFICE FREE 30 DAY TRIAL.

EXPERIENCE OUR VIRTUAL OFFICE FACILITIES

Support Team • Meeting Rooms • Leading IT and Communications

T 03 9982 4527

e melbourne@servcorp.com.au

SERVCORP.COM.AU

MELBOURNE SOUTHBANK DOCKLANDS 100+ LOCATIONS WORLDWIDE *Exp 30.06.12

SERVCORP

SOUTH MELBOURNE TOYOTA

Come in and meet our professional sales team!



**BRAND NEW CAMRY
HERE NOW!**

**COME IN TODAY FOR A
TEST DRIVE & A GREAT DEAL!**



SOUTH MELBOURNE



215 - 217 Normanby Road, Sth Melbourne

NEW & USED CARS:

8645 6333



www.southmelbtoyota.com.au

Pics for illustration purposes only. E&OE. LMCT 10618. SMT108632

City wants more open space

The City of Melbourne is planning to raise more money from developers to pay for open space.

“Eco City” councillor Cathy Oke said to achieve livable open-space ratios in high growth areas such as Southbank, developers must contribute.

“The in-depth analysis carried out for our open space strategy indicates that the open space projects cannot be delivered unless development pays its fair share of the cost,” Cr Oke said.

She then went on to explain just why having open space was so important, particularly in dense residential areas like Southbank.

“Open space is fundamental to the mental and physical health and wellbeing of urban communities and to Melbourne’s liveability,” she said.

“Additional open space is needed to meet the needs of a rapidly growing resident and worker population and to meet identified gaps in existing suburbs,” she said.

City-zone to get bigger

Planning Minister Matthew Guy has announced a plan to expand the capital city zone to allow for higher density living within the City of Melbourne.

Southbank, along with the CBD and Docklands, already falls into the capital city zone but under the new proposal so would sections of St Kilda Rd, and sections of the western and northern sides of the municipality.

Mr Guy stressed that this was a long-term plan, and needed to be treated as such, saying: “It is important to realise this is a 20 to 50 year vision – it will not happen overnight, but we need to provide leadership and opportunities.”

He also said he wanted to hear from Melburnians about their views on higher density living.

“Many people are concerned about high-rise towers dominating quiet suburban streets, so we need to ask if high-rise should be primarily concentrated in the inner city to take growth pressure off Melbourne’s

existing suburbs, while also capitalising on existing infrastructure,” Mr Guy said.

Mr Guy also wanted it to be known that this was not an opportunity for open slather high rises.

“It doesn’t mean we will have Rialto-size buildings in every part of it, but what you will have is greater density and greater height throughout an expanded CBD,” he said.

Mr Guy suggested that this was a great opportunity to see the city continue to grow, saying: “Melbourne’s CBD only had a few hundred residents in 1990. Today, over 30,000 people call the CBD, Southbank and Docklands home. We need to continue the discussion about how to provide inner city living opportunities for those who desire it.”

Transport strategy needs your say

The City of Melbourne has released a transport strategy draft for 2012-30 for public comment, giving all stakeholders, residents and visitors the chance to have their say on the future.

The consensus among councillors on March 13 was that the strategy was still far from being finalised, and in reality, needed more input and tightening.

The transport strategy report has been updated with public submissions received last year.

Lord Mayor Robert Doyle said there was no doubt the strategy needed work and it was a long way from being finished.

“We would need to be more convinced as a group that this draft is where we should end up. I’m not convinced we are there yet,” Cr Doyle said.

Councillor Jackie Watts those thoughts, adding: “I see this as requiring a lot more work. This is a very important document and it’s not at a satisfactory point for me to recommend today.”

riverside dining melbourne style.

WTC Wharf is Melbourne’s first absolute wharf edge dining precinct, with world class restaurants, bars and a purpose built events centre.



World Trade Centre
Corner Flinders and Spencer St
wtcwharf.com.au


wtcwharf
melbourne’s meeting place

River's Edge
EVENTS



WILSONS
BOATHOUSE



The Wharf Cellars





prima pearl

THE GEM IN APARTMENT LIVING

Construction
has commenced
on Southbank's
most sought
after residences.

Located at the heart of Melbourne's pre-eminent art and leisure precinct, Prima Pearl's sophisticated 1, 2 and 3 bedroom apartment designs capitalise on living space and city views. Finishes have been selected both for their beauty and to stand the test of time in a luxurious palette of stone, porcelain, chrome and timber. Beyond your apartment, resident amenity and comforts are reminiscent of a 5-star hotel.



Experience Southbank's gem in apartment living by visiting the Prima Pearl display suite.

1 Queensbridge St Southbank,
Monday to Friday: 11am - 5pm,
Saturday & Sunday: 12pm - 4pm
(or by appointment)

Enquire now +61 3 8638 1888
primapearl.com.au



A joint Schiavello PDG development

We asked the kids from St Johns Southgate what they were looking forward to most about Easter



Matilda
I like to hear the story of Jesus coming back alive.



Serena
I like the Easter eggs the most.



Ben
Because Jesus was resurrected. And resurrection is cool!



Bethany
Definitely the chocolate eggs!



Georgia
I love it when my family comes together for Easter. Plus it means it's almost my birthday.



Patrick
Chocolate eggs, and my favourite kind are the milk chocolate ones



Harrison
I love it because we get lots of chocolate!



Geordie
I like it because Jesus comes alive again, it is a happy time.



What do you love about Easter?



Serving Yarra's Edge - Apartment Genies

The Apartment Genies has been providing services in Docklands now for almost 10 years. It is a branch of the Concierge 86 services located at the base of Tower 5 (86 Lorimer street) Yarra's Edge, Docklands.

Let's face it, everyone wants more time to enjoy life. Concierge 86 sees its role as providing support for its customers with all those menial and time-consuming tasks that impact our daily lives.

Apartment Genies offers residents of Docklands affordable and secure cleaning services. We cover all aspects of domestic cleaning from that one-off spring clean to a regular weekly or as required cleaning service.

Other services are available such as window, carpet, oven, fridge cleans, etc. Vacate cleans, together with handy man service for tenants wishing to get their bond returned in full, are also provided.

The business has also evolved to include many exclusive services for Yarra's Edge residents. Along with the cleaning services offered by Apartment Genies we also offer the following services:

- Exclusive dry cleaning service provided by On The Spot Dry Cleaning. On the Spot has 25-years experience with clientele including some of Melbourne's top fashion designers, exclusive boutiques, the majority of the TV networks and the Premier's office;
- Dog walking service, as well as looking after your pets in your apartment whilst you are away;
- Assistance with removalist bookings;
- Handy man services; and
- Alternative parcel delivery point.

Discover Yarra's Edge

Yarra's Edge is located just across the Yarra from the ANZ building. Take a walk across award winning Webb Bridge to this truly undiscovered gem. This pristine neighbourhood, developed by Mirvac, boasts stunning apartments as well as luxury homes. Delightful dining opportunities and a beauty salon also make it well worth a visit on a beautiful day. Take advantage of the sunny north facing bank of the Yarra - it is there for you.

Apartments now selling: yarrapoint.com

Luxury homes now selling: mirvacriver.com

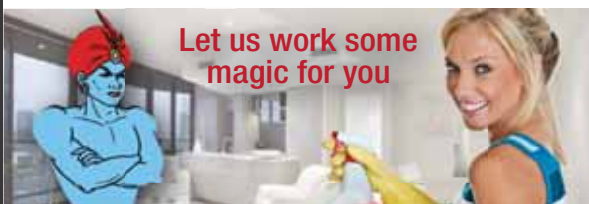
MAD DUCK CAFE



- Fully licensed cafe
 - Open seven days for breakfast & lunch
 - Catering & private functions available
- Check out our line of organic products:
Bread • Coffee • Hot Chocolate • Teas • Juices

92 River Esplanade, Docklands.
P: **9681 8882** E: info@maddockcafe.com
www.maddockcafe.com

APARTMENT GENIES



UNDER NEW MANAGEMENT

Your Docklands-based cleaner. Just set and forget and come home to a clean apartment.

- Cleaning - weekly, fortnightly or monthly
- Carpets steam cleaned
- Windows washed
- Fully insured
- Vacate cleans
- Spring cleans

86 Lorimer Street, Docklands.
P: **9646 7996** E: genies@genies.net.au

PAPILLON DAY SPA



At Papillon Day Spa you will be amazed by the stunning water views and relaxing atmosphere

- Pamper Packages
- Facials
- Massage
- Waxing
- Tanning
- Manicures & pedicures

84b River Esplanade, Yarra's Edge.
P: **9681 7700**

LUCAS REAL ESTATE



Lucas Real Estate is the leading Docklands agency with two prominent offices. Lucas Real Estate has the expertise to assist with all your property requirements. Open seven days.

62 River Esplanade, Docklands.
Phone **0396451199** or NewQuay **0390911400**
www.lucasre.com.au

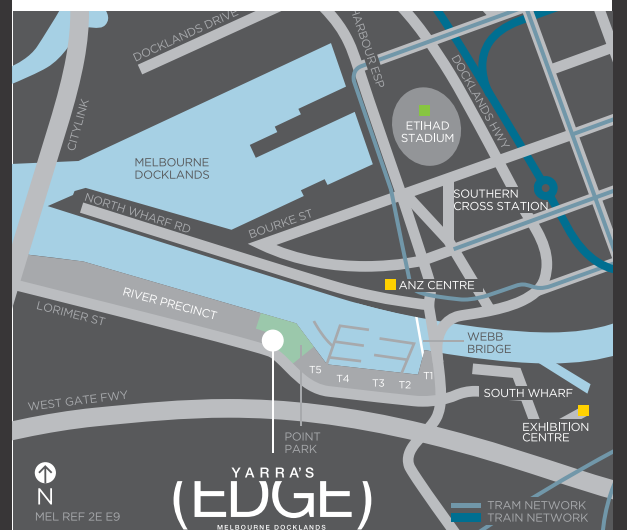
KINYA



Kinya is one of Melbourne's most enviably located Japanese restaurants, nestled in the south Docklands precinct of Yarra's Edge.

70 Lorimer St, Docklands.
P: **9646 2400**
www.kinya.com.au

YARRA'S EDGE



Letters to the Editor



Send your letters to news@southbanklocalnews.com.au

Intersection needs intervention

I wish to bring this very dangerous intersection to the notice of all local government, state and federal politicians.

As a resident of the Southbank area since 1993 and having seen so many changes and population growth to our area, I feel that the intersection of Kings Way, Coventry St and Sturt St is the major drawback to living here.

We need a pedestrian overhead crossing of some description – be it a ramp or even a plaza joining the two lovely outdoor areas on both sides of Kings Way. It is an accident to happen when pedestrians have to almost run across to get to tram stops, etc.

I have written to the City of Melbourne, which in March 2010 only passed my letter to the regional director metropolitan of VicRoads' north west region. VicRoads claimed people would not use a ramp crossing and pointed out that there had not been a pedestrian-related crash there over the past five years.

At the moment, three large developments are in the process of being built – meaning another approximately 900 more apartments in our immediate area.

We mostly shop in South Melbourne as banks, major supermarkets, and the post office are in this area.

With proper planning and imagination, I am sure that this intersection could be transformed from a very ugly and dangerous place into one of beauty.

In this area, we should be shown the same consideration as areas around schools and universities.

Stuart Murray
Southbank

Up close and personal for Southbank residents

There's a planning amendment in the works which promises to make your life as a Southbank resident uncomfortably up-close and personal. The proposed C171 Melbourne Planning Scheme Amendment will bring your neighbours into peeping distance from your home.

It will affect the degree of sunlight and daylight on your street and into your apartment, the noise and wind levels on your street, the extent of traffic congestion in your neighbourhood as well as the walk-ability of Southbank.

The C171 Amendment is part of the Southbank Structure Plan 2010 which, in turn, is part of the Melbourne Planning Scheme. The structure plan and the amendment seek to change current planning policy on tower and podium height, building separation and offset, plot ratios, the set back of buildings from streets, interaction between building frontages and streets, pedestrian permeability and the like.

Many of the specific provisions of C171 Amendment are not in the interest of residents. They seek to introduce greater flexibility in tower height, reduce separation between buildings from 24m to 10m, remove the provision of the maximum plot ratio of 12:1 and, in general, allow for huge towers massing along our main streets.

This will inevitably affect the quality of life of every one of us in Southbank,

In view of the numerous objections against C171 raised by residents in 2010, the State Government appointed a specialist panel of three experts to hear and consider written submissions from the public. The panel met over a four-day period – February 9, 10, 14 and 15 – to hear submissions and experts speak.

A number of major developers and architects made presentations to the panel, supported by highly-paid experts and lawyers. It was an awesomely-organised and expensive effort by

the "big guns". They obviously have deep pockets and determined ambitions for Southbank.

Essentially, they seek the lifting of height restrictions, of separation and setback parameters and active building frontage requirements to enable them to extract every last dollar from each site in Southbank.

On the other hand, all of you 13,000 Southbank residents were represented by two lonely souls – yours truly being one of them. We weren't even aware that a formal presentation could be made to the panel.

However, the panel kindly accommodated us at the last minute, and we put together a presentation over the February 11-12 weekend in an attempt to represent resident views. (Our submission is available on www.queensbridgeoverload.com.au.)

In summary, the outlook for us residents does not look sunny (pardon the pun).

We are fighting a stacked-deck. And, given the deep pockets of the developers, our only hope is the owners' corporations in Southbank getting together to express their united and co-ordinated views through the Southbank Residents Group.

Unless this counterpoint is quickly organised, the politicians will probably cave in to the pressures of the developers. Taller and more towers in Southbank means the City of Melbourne takes in more taxpayer rates and the State Government proudly exhibits more cranes in the sky.

People power has influenced Government policy change in other situations. It can also do so for us in Southbank. Here's what you can do. Send a protest tweet to Planning Minister Mathew Guy twitter@MathewGuyMP or an email to matthew.guy@parliament.vic.gov.au.

Cedric Saldanha



AMAZING SAVINGS ONLY IN APRIL

Ken Duncan
BUY IT NOW SALE
30% to 50% off

SELECTED LIMITED EDITION PRINTS

Level 1, Harbour Town Shopping Centre,
Docklands, Vic. Phone: 03 9670 6971
Open daily from 10am

Ken Duncan
GALLERIES
www.kenduncan.com

Join the Yarra River Conversation

If you're a business located on, near or with an interest in the Lower Yarra River (Punt Road to Charles Grimes bridges), you should belong to the Yarra River Business Association – the City of Melbourne's endorsed business precinct for this side of the river.

It's run by local business people for the benefit of all businesses. Membership at \$170 p.a. connects you right into the issues and opportunities of the precinct, great networking events with our 140 members, and an opportunity to influence the development of the area. What's more, you'll also get an illustrated business entry on the official website www.yarrariver.info

Call 9787 0962 for a membership kit.





Will “grand Melbourne” still be liveable?

Planning Minister’s (Mathew Guy) announcement of his “Grand Melbourne” vision last month created some commotion among residents of the City of Melbourne.

Some expressed concern as to how this will all come together given that current infrastructure is already under pressure and requires a revamp due to rapid population growth. Others simply welcomed the initiative.

I believe that the Manhattan-style metropolis proposed for the City of Melbourne, if not managed properly, could end-up with some undesirable outcomes such as: high density, social isolation, large population, higher indices of pollution, security, social and health issues. It is important to note that some of the most iconic cities in the world characterised by this Manhattan-like living did not do that well in the last liveability study conducted by the Economist Intelligence Unit (EIU) in 2011 – New York City 56th, London 53th and Hong Kong 31st place. If this vision goes ahead, it will require a balancing act, as it seems that high density does not necessarily translate into liveability.

It is important that Melbourne’s trademark and biggest asset – which is its track record of being the most liveable city in the world – is maintained. This is what makes Melbourne one of the most sought-after places to live in the world.

Southbank will play a role in the “Grand Melbourne” vision after been identified as a high growth area in the Southbank Structure Plan 2010. While Southbank’s residents welcome growth, it is expected by the community that the same will be supported with the right infrastructure and it would not be to the detriment of existing residents. It has been flagged in the outer growth areas that lack of basic infrastructure is having an impact on resident’s health. This may pose a cost in Victoria’s health system and needs to be taken into consideration when planning for further growth.

Southbank’s growth should also be sustainable and at a reasonable pace. Residents should be able to enjoy basic amenities such as sunlight, streets without wind tunnels or traffic congestions, schools, open space, green

areas, police services and health facilities among others. View corridors should also be implemented in order to protect river views in the same way that Vancouver has done with the North Shore Mountains.

The City of Melbourne should address any infrastructure shortage. Currently in Southbank, there are four buildings work in progress (approx 42 storeys each) and 19 more in the pipeline.

A quick calculation tells me that Southbank should reap the benefits soon and all the ratepayer’s money collected in the last couple of years should be translated in amenities and a traffic study for the area. This will identify if key arteries such as City Rd, Queensbridge and Clarendon streets are able to cope with the hundreds of additional cars coming to the roads with the new developments.

As we speak, a key Planning Scheme (Amendment C171) that will facilitate the implementation of the Southbank Structure Plan 2010 is being reviewed by an independent panel of experts. Their findings will be available in eight weeks

or so. If you are not familiar with either of these documents and you call Southbank your home, I invite you to read them on the City of Melbourne’s website: <http://www.melbourne.vic.gov.au/AboutMelbourne/ProjectsandInitiatives/Pages/AmendmentC171Southbank.aspx>.

If you would like the Southbank Residents Group to organise an information session regarding C171 for your building or you would like join the Southbank Residents Group, please contact me on srgi2000@gmail.com.

Volunteers wanted

Southbank Residents Group is changing its image and is launching a new website. We are seeking for volunteers who would like to help us and who have some experience in marketing, public relations and social media strategy implementation. We are also looking for a PA/EA with excellent administration skills who would like to volunteer some time with us. Students are welcome to apply! If it sounds like you please contact me on srgi2000@gmail.com



The Colonial Tramcar Restaurant offers open dated gift certificates which make an ideal present for any occasion.

Gift Certificates are valid for 12 months from the date of purchase and are presented in a special souvenir giftpack.

If you are looking for the ideal gift, visit our website www.tramrestaurant.com.au or telephone 9696 4000.



An experience above all else

20%

*DISCOUNT
OFF ENTRY

Present this coupon at the Eureka Skydeck Ticketing Counter to receive 20% off entry*

The Southern Hemisphere’s highest viewing platform with the world’s only **EDGE EXPERIENCE**

Available on the App Store

twitter

facebook

Open 10am until 10pm Daily (last entry 9.30pm)
Riverside Quay Southbank Melbourne Australia
www.eurekaskydeck.com.au 03 9693 8888

* This discount is not valid with any other offer.
This discount is not valid for the EDGE experience.
Discount valid for Adult, Concession, Child and Family passes only.
SOUTHBANK LOCAL NEWS

EUREKA
skydeck

88



Red by the Melbourne Theatre Company

The award-winning play Red is about to premiere at the Melbourne Theatre Company.

Played by Aussie film veteran Colin Friels, Red is the story of Mark Rothko, a Russian-American painter who became one of the most famous abstract expressionist artists of the 20th century. After finding success in New York City, he struggles to accept that his growing ambition for praise and riches will ultimately become his undoing.

In a Manhattan studio in the late 1950s master abstract expressionist painter Mark Rothko is madly painting a set of murals especially commissioned for the new Four Seasons restaurant, part of the prestigious New York Seagram Building. Under the watchful gaze of his young assistant Ken, and the threatening presence of a new generation of modern artists, Rothko faces one of the biggest conundrums for any artist who wants to make a living. Is this well-paying commission a wonderful chance to create a work of art for an extraordinary setting, or is he simply selling his creative soul at \$35,000 a piece?

Red is an exciting two-character play, a portrait of an artist's ambition and his ever-present vulnerability. Rothko's intensity and the sheer determination of his character, makes for a great piece of theatre with its relationship between an artist and his creation. Having had seasons in London and NYC, winning the Tony award for best play in 2010 and many other awards, Red promises to be more than a class in artist appreciation 101 with its portrait of a talented but angry mind whilst giving us a sense of the shape and texture of his thoughts.

Red is written by John Logan who's creations for both stage and cinema include: Any Given Sunday, Star Trek: Nemesis, The Time Machine, The Last Samurai, Rango, Coriolanus and Tim Burton's Sweeney Todd, for which he received a Golden Globe Award. He also earned three Academy Award nominations for Gladiator, The Aviator and this year's Hugo.



Melbourne filmmaker, Alkinos Tsilimidos makes his stage directing debut with MTC with Red. Described as one of Australia's most important contemporary film directors, his gritty, socially observant films include: Everynight ... Everynight, Silent Partner, and Em 4 Jay, all written by my favourite Australian playwright Daniel Keene (Life Without Me, Melbourne Theatre Company 2010). On directing Red, Tsilimidos says the play "promises a visceral experience where art meets commerce head on and thankfully art wins out".

Set designer: Shaun Gurton

Costume designer: Jill Johanson

Lighting designer: Matt Scott

Composer: Tristan Meredith

Cast: Colin Friels (Mark Rothko) and André de Vanny (Ken)

Season dates: March 22 to May 5, 2012

Opening night: Monday, March 26 at 8pm

Tickets from \$56, Under 30s just \$33

Booking details: The MTC Theatre Box Office 8688 0800 or www.mtc.com.au



The beauty remains, the pain passes

Although Henri Matisse was nearly 28 years younger than Auguste Renoir, the two great artists were dear friends and frequent companions. When Renoir was confined to his home during the last decade of his life, Matisse visited him daily.

Renoir, almost paralysed by arthritis, continued to paint in spite of his infirmities. One day as Matisse watched the elder painter working in his studio, fighting torturous pain with each brush stroke, he blurted out: "Auguste, why do you continue to paint when you are in such agony?"

Renoir answered simply: "The beauty remains, the pain passes." And so, almost to his dying day, Renoir put paint to canvas. One of his most famous paintings, The Bathers, was completed just two years before his death – 14 years after this disabling disease struck him.

Life regularly brings along times when pain, suffering and sorrow fills our hearts and minds. Loneliness, illness, our children or friends' struggles and a plethora of other problems weigh us down. In times like these, our heavenly father wants to comfort and encourage us. Ultimately the pain will pass, but the beauty of Christ's cross will remain forever.

In Roman times, the cross was a symbol of death. It stood for the abrupt, violent end of

a human being. The man, who took the cross and started down the road, had already said goodbye to his friends, to his family. He wasn't coming back.

But God, in his son, Jesus Christ, transformed the cross from a symbol of death and hopelessness, into a symbol of beauty, hope and victory. St Paul writes to the Corinthians: "For the message of the cross is foolishness to those who are perishing, but to us who are being saved it is the power of God" (1 Cor.1:18).

The sight of Jesus on the cross disclosed God as one who suffers with humanity. There is no suffering closer to God than the suffering of the man Jesus. Thus, the human suffering of Jesus is really God's own suffering. But God helps us in our suffering through the

cross, keeping us through his word and sacraments at the cross of Christ, so that we are comforted in our struggles.

Here at St Johns Southgate we encourage one another with the message of the cross. Our community of faith weekly celebrates the victory that Christ has earned for us by his own death. It is a great privilege that we are reminded by the Easter message that ultimately our pain, whether physical or emotional, will pass, if not here on earth, then at least in eternity. But the life giving hope, the "beauty" of Christ's cross, will remain forever as our true hope and salvation.

Rev. Ian Vainikka
Pastor, St Johns Southgate Lutheran Church



SOUTHBANK FASHION



Madeline

LOCATION?

Southwharf

WEARS?

A t-shirt of Perth band The Floors and a skirt from Supre.

DESCRIBE YOUR STYLE?

All over the place.

WHAT BRINGS YOU TO SOUTHBANK?

Shopping! I'm trying to find swimmers.

WHERE ARE YOU FROM?

WA. I'm here on holidays.

WHAT IS YOUR FAVOURITE PIECE OF CLOTHING?

My new red Ksubi dress.

WHAT MAKES A GOOD OUTFIT?

Being laid back, I don't like to look too "done".

Anthea

LOCATION?

Southwharf

WEARS?

A dress from a market and shoes from e-Bay with an Alexander Wang bag.

DESCRIBE YOUR STYLE?

Ethereal and colourful.

WHAT BRINGS YOU TO SOUTHBANK?

The \$5 book sale!

WHERE ARE YOU FROM?

Box Hill.

WHAT IS YOUR FAVOURITE PIECE OF CLOTHING?

A beautiful vintage fur jacket. So timeless.

WHAT MAKES A GOOD OUTFIT?

Great vintage items with your own personal twist.

Priscilla

LOCATION?

Southwharf

WEARS?

Outfit by Tigerlily and Tony Bianco boots.

DESCRIBE YOUR STYLE?

Bohemian, laid back and simple.

WHAT BRINGS YOU TO SOUTHBANK?

Work! I work at Tigerlily!

WHERE ARE YOU FROM?

Essendon.

WHAT IS YOUR FAVOURITE PIECE OF CLOTHING?

My vintage black leather jacket.

WHAT MAKES A GOOD OUTFIT?

It's all about hair and accessories for me.

Fashion festival comes alive

By Samantha Goss

This year's L'Oreal Melbourne Fashion Festival kicked off in Docklands with a bang.

The best of Australian fashion talent was out in full force for a week of canapes, champagne, long legs and sartorial mayhem.

The most highly anticipated show for the week was L'Oreal Paris Runway 4, presented by Vogue, displaying the Australian designers at the top of the fashion game.

Perth-based label Ellery stole the show at the Myer parade with designer Kym Ellery setting the bar enormously high with her signature, structured metallics and fancy flares. A close runner-up was the ever-flawless Dion Lee whose soft geometric prints and blended coat collars got the job done nicely.

Magdalena Velevska proved that even relatively new labels can hold their own with the big guns. Her use of all-over apple green and purple furs was a welcome inclusion after the muted wonders of predecessor Dion Lee.

As always, street label Ksubi presented what all the cool kids will soon be wearing which, this season, included army-print dresses, hints of leopard print and, naturally, lots of leather.

Fresh label Jolet was a standout, sending models trotting down the runway in three-piece pantsuits of a dreamy cityscape print – not your average office-wear!

A welcomed inclusion was this year's National Graduate Showcase brought to us by Sportsgirl.

It was inspiring – witnessing raw, innovative talent on the cusp of burgeoning greatness.

Recent graduate Anna Langdon's debut collection was a particular favourite showing colourful, cartoonish and non-sensical designs.

As for accessories, Mimco unveiled an unbelievable collection of layered heavy chains, rock-inspired silver necklaces and be-jewelled clutches – with LA-based Australian swimsuit model Jessica Gomes flying in to open and close the show.

If you're looking for an easy, fashion-forward way to wear new styles, the most consistent trend throughout was definitely the digital print – done particularly well by local label White Suede.



Welcome to St Johns Church Southgate

A place for worship, prayer and community,
located on the upper level of the
Southgate Arts and Leisure Precinct

Sunday Service Times
9am Traditional, Liturgical worship
11am Informal, Liturgical worship
7pm Sunday Night at St Johns
Informal, Contemporary worship

The chapel is open daily
for private prayer and reflection

St Johns
Southgate

20 City Road Southbank Telephone 9682 4995 www.stjohnssouthgate.com.au

Melbourne. The World's Most Unliveable City?

Does the Lord Mayor
Robert Doyle really care?

- Is our City Council beyond the law? The Council has completely ignored existing planning guidelines and has selectively used elements of a proposed planning amendment (still being considered by an expert panel) to recommend the construction of Queensbridge Tower on Queensbridge Street. The permit application is now with the State Planning Department (DPCD).
- The Queensbridge tower, at a 192 metre height and a 10 metre separation from Freshwater Place, violates most existing planning guidelines of plot ratio, height, separation, offset etc. It will extend across the entire western face of the Freshwater Place tower, thus obliterating for over 250 Freshwater Place apartments, their only source of light, and completely depriving them of basic privacy.
- The Council appears to support development at any cost. The Council has totally ignored the existing Melbourne Planning Scheme which requires a 24 metre separation between towers and specifically states:
"...ensure new buildings are well spaced and offset to equitably distribute access to outlook and sunlight between towers and minimise direct overlooking between habitable room windows."
- Freshwater Place owners' request to be heard by the Council was rejected. As Southbank residents, they have no right of appeal to such decisions.
- The future looks bleak for us Southbank residents if on the one hand we have no rights, and on the other our elected representatives ignore their own planning policies.
- The Queensbridge Tower proposal is now before the State Planning Minister, Matthew Guy. We urge the Minister to reject this outrageous development. Alternatively, it should be referred to an Expert Panel. The residents of Southbank must be consulted and allowed to present their point of view.

Residents Without Rights
www.residentswithoutrights.com.au



SPONSORED BY:

PETstock
animal supplies

... part of your family!

211 FERRARS ST, SOUTH MELBOURNE VIC 3205
T: 03 9699 4234 | F: 03 8610 2102
WWW.PETSTOCKSOUTHMELBOURNE.COM.AU

A warrior, Goku is not

Amongst the “Blues”, “Fluffys”, “Rexs” and “Mollys” of the dog world Goku the Shanghai pug is a rare exception.

Named after a character in the popular children’s anime program Dragon Ball Z, Goku holds no resemblance to his namesake.

His owner, Marianthe Ranieri, said the Japanese warrior was everything her pampered pooch was not.

“It’s funny because Goku the anime character is meant to be big, strong and heroic but my Goku is so small and silly,” she said.

Although there are no obvious similarities between the pug and the warrior, Marianthe said she and her husband chose the name because of Goku’s Asian pedigree.

“Dragon Ball Z is an Asian animated show and our Goku is a Shanghai pug so it makes some sense,” she laughed.

Goku also lacks the independence of his namesake and requires constant attention.

“I wanted a small dog because they’re easier

to look after but he is so high maintenance,” Marianthe said. “He demands so much attention from me.”

When she isn’t busy working from her apartment in Southbank as a clinical researcher Marianthe makes sure she always has time for her loveable pug.

“I take him for walks every morning along Southbank when it’s quietened down,” she said.

There are times when Marianthe’s work requires her to travel around the city and interstate and she can’t be there for Goku’s every beck and call but fortunately her husband has plenty of time for the quirky pup.

Despite his lack of ferociousness and enormous consumption of her time Marianthe said she would never give away Goku’s “squashed little face”.

“He’s just like my baby,” she said.



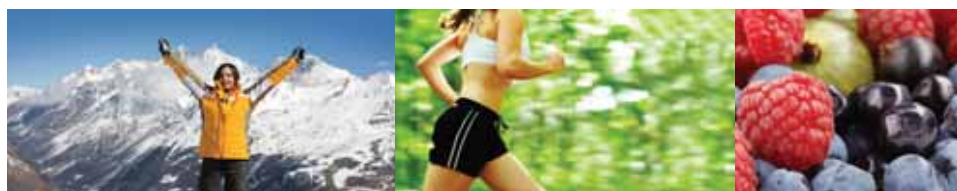
Goku receives a \$25 gift voucher from Pet Stock South Melbourne



Travel Doctor *Plus*⁺
Your Healthy Lifestyle Clinic

Docklands Medical & Lifestyle Clinic

Male & female GPs



General practice
Skin cancer screening
Women’s health
Travel medicine
Health & lifestyle programs

Level 4, 700 Collins Street, Docklands
Open Monday to Friday 8.30am – 5.00pm
Call 8622 6333 | www.docklandsmedical.com.au

Business is moving to portable handheld devices.

We can build your app.

You’ll be surprised how affordable our apps are. Speak to Shane or Nicola on 9602 2992

at the forefront of digital communication for 25 years



mediacomms.com.au

108 / 198 harbour esplanade docklands, 3008
P: +61 3 9602 2992
contact@mediacomms.com.au

FACES OF SOUTHBANK



JOAN ROBINSON
Traveller from Mooroopna

Southbank is just one of the many places Joan will explore on her 18-night cruise along Australia's southern coast. While she had only been in the area a few hours Joan and her husband were already feeling more at ease. "The scenery is just lovely and relaxing," she said. "We are from Mooroopna so everything here is big and busy but it's a lovely day so we're enjoying ourselves."



JENNY SPELLS
Traveller from England

Jenny had been wandering around Southbank for a few hours when we caught up with her. She planned on soaking up some sun on her short stay in Melbourne. She said the warm weather was a welcome change from the freezing UK winter. Before Jenny travels to New Zealand she is hoping to find a delicious place to dine and relax. "At the moment I'm just enjoying a better way of life," she said.



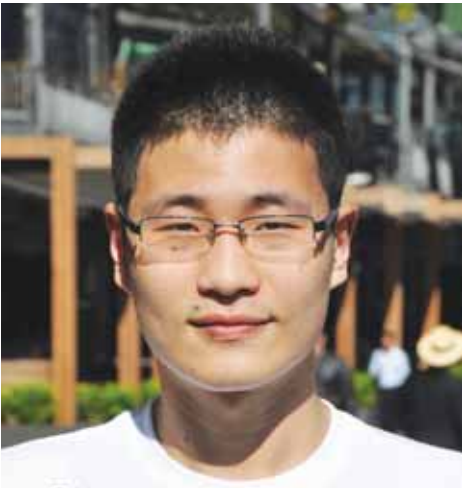
RICHARD TEMPLEMAN
Traveller from England

Richard has come to Melbourne for a short stay from England and, whilst trying to navigate his way around the city found himself meandering along a particularly bright and sunny Southbank. "I'm just enjoying the weather at the moment," he said. "It's very nice here but we've got to find the city circle tram and see the rest of Melbourne."



SARAH RUSSO
Floor manager at Servcorp

Sarah says spectacular cities like London, Paris, Florence and Singapore all have rivers running through the heart of them which gives them a certain energy and vibrancy. She believes Melbourne is lucky to have the stunning Yarra River, and Southbank is of course the best place to take advantage of this amazing asset. According to Sarah, whether you live right on river bank or have an office with views of the beautiful greenery and water – it doesn't get much better than this.



CHRIS LEE
Traveller from China

Chris has been busy sightseeing around Victoria while he visits from China and Southbank was his last stop before heading to Sydney. Chris's most memorable holiday moment was watching the fairy penguins at Phillip Island and enjoying the relaxed atmosphere of Melbourne. "Everyone is so calm here compared to China," he said. "Nobody is stressing about trying to find a clear space to walk they're just wandering along enjoying the day."



CHRISENTIDE
Performer

Chrisentide is a regular performer in Southbank but hates to be called a busker. He thinks busking is a disruption to the serene river setting of Southbank and ruins the art of his music. Chrisentide travels 40 minutes from home to play along the Yarra but says he wouldn't play anywhere else. "I've been playing here for about a year and it's the only place I perform," he said. "I chose Southbank because it's sheltered, picturesque, safe and friendly." While he gets a few strange looks at his refusal to accept money for his music, Chrisentide says the people who walk by are usually friendly and interesting.

282 COVENTRY ST, SOUTH MELBOURNE
T: 9699 4664 • F: 9699 4806
WWW.AZIZADESIGNS.COM.AU

... part of your family!

...for all your pet care needs

- Premium foods
- Collars & leads
- Bedding
- Accessories
- Health care products

PETstock Sth Melbourne 211 Ferrars St, (03) 9699 4234



ON THE BOX

with Korey Fernando

The undead invade Foxtel

It's no secret that the highest-rating programs in the country are either reality shows or the news.

This cheats the viewing audience because, while reality programs may be somewhat entertaining, they are incredibly cheap to produce. And while this season's Thomas and Carla are depicted as rogues of Bonnie and Clyde type proportions, they will soon be replaced by another forgettable pair of villains on the next whatever-show hosted by a Scott Cam and Jamie Durie hybrid-being.

Overseas however, event television is king. In America, while reality programs are popular (anything to do with idols, dancing or shores comes to mind), a slew of high-budget drama are attracting a lot of attention. Gripping dramas like *Mad Men* and *Breaking Bad* have broken ratings records, but US cable-network AMC's new program is causing a stir for its strange premise.

Based on a graphic novel of the same name, *The Walking Dead* is a program that revolves around a small bunch of people trying to survive in a post-apocalyptic, modern-day world. Oh, it's also worth mentioning that

there are also zombies. Lots and lots of zombies.

The story centres on a former sheriff's deputy in a small rural town who, after waking up from a coma, finds the world overrun by flesh-eating monsters. After banding together with a diverse group of resistance (earth's only survivors happen to be racially blended – bonus points for that), the search for a military "safe zone" begins.

At this point, *The Walking Dead* isn't sounding too different to any of the other undead-related media out at the moment. Yes, the monsters are people, struck down with some sort of disease and they crave human flesh. However, this is where the similarities end. What sets *The Walking Dead* apart is that it still manages to be a very gritty human drama and it doesn't shy away from confronting themes. In early episodes of its premiere season, the issues of humanity, euthanasia, torture and racism are all carefully explored.



The cast is very strong and the characters are well-written and relatable. As the danger of their situation grows, the reactions of the characters are grounded in reality. For example, when one of the group is killed early on in the series, the monsters are almost forgotten completely as the program focusses on people's emotions. The makeup and visual effects are also put to good use, making the world of the program even more believable.

One very slight criticism would have to lie

with the portrayal of the aforementioned. With a program of such a large scale that is teeming with extras there are some moments where the bounding hordes of zombies resemble a bunch of university students at a halloween party (or maybe just a bunch of amateur theatre actors). This is of course inevitable and forgivable in terms of the entire show.

Unfortunately, *The Walking Dead* does not currently screen on free-to-air television but it can be found on Foxtel's FX channel.

TOURS ON TRIKE



Experience the Freedom of a Three Wheeled Adventure

Experience the wind in your face, and that Feeling of Freedom that only a Trike Tour provides.

Our Tour Guides supply an informative commentary about our wonderful and unique Melbourne. We supply Weatherproof Jackets, Helmets, Gloves and have short, long and tailored Trike Tours to suit everybody.

RECOMMENDED TOURS

City Night Time Delights Tour (See the City Lights at Night)
The TrikeMan's Treat (Our Special every day 2hr Tour)
Round the Bay on the OZtrike (A Great Full day)
The Grand Prix Lap (See the actual F1 track)
Christmas Gift Vouchers (Book on Line)

All major credit cards – 1 to 3 passengers
Check our Website for all listed Tours

Tel: 9670 6930 | Booking Hotline: 0439753928
www.toursontrike.com.au | Trike HQ: 756a Bourke St Docklands



TRIKEMAN BILLBOARDS

Grand Openings | Sporting Events | Product Launch
Music Festivals | Trade Shows | Conventions



CALL TODAY FOR A FREE QUOTE
03 9600 4552
756a Bourke St Docklands



Businesses in Southbank

SOUTHBANK-BASED BUSINESSES WISHING TO BE PROFILED IN THIS SECTION SHOULD EMAIL: ADVERTISING@SOUTHBANKLOCALNEWS.COM.AU

SOUTHBANK’S NEW “PEARLER” OF A PLACE ...

I remember an ancient proverb from my travels in China: “The loftiest towers rise from the ground.”

It pretty much means, even the grandest of achievements have a simple beginning.

That is what we are witnessing on the corner of Queensbridge and Powers streets in Southbank today – the construction of Prima Pearl apartment tower has begun.

Each day, watch the 72-storey, 250m tower slowly rise from the ground at 31-39 Queensbridge St.

Prima Pearl is being developed by PDG and Schiavello, and sales executives Chris Carmona, Julie Belleville and John Pickham say the apartments are pretty much selling themselves.

“Prima Pearl has the best amenities being offered in Southbank today,” Chris said.

“Skylounge, on level 67, has a huge bar and lounge with views to die for,” Julie said.

Level 9 could be described as “Cloud 9,” with a massage studio, private cinema, gym, golf virtual driving range, snooker and table tennis.

“It’s perfect for entertaining people,” Chris said. “It is like living in a 5-star hotel.”

Julie pointed out the sense of security, with two 24-hour concierge lobbies.

“There is so much to do at your doorstep,”

Chris said. “Just across the road is Crown Entertainment Complex and we are surrounded by some of Melbourne’s best restaurants and chic boutiques.”

“And there’s the public transport – there’s a tram stop right out the front door, and buses, and the train lines on the other side of the Yarra River.”

“Double glazed windows insulate the apartments from traffic noise,” Julie said.

“The body corporate fees are lower than many similar apartment towers in the local area, because we don’t outsource body corporate management.”

Chris said people “from Shepparton to London” were buying the Prima Pearl apartments.

“We have a mix of people,” Julie said. “Families with young kids, empty nesters who want to move into the area, people who have been in Southbank for 10 years and want to upgrade – I have people from Perth who just want to use their apartments during Melbourne’s magnificent sporting events.”

John said the apartment layouts were evolving even as the tower took shape.

“There are more than 40 different apartment



Prima Pearl sales executives Julie Belleville and John Pickham (right) discuss the many features of Southbank’s latest apartment tower with a customer.

designs,” he said.

“The designs have been altered following customer feedback. There are still a variety of floor plans to choose from.”

Prima Pearl apartment tower will be finished second half of 2014.

One-bedroom apartments start at \$351,000,

two-bedrooms from \$509,000, and there are many varieties of three-bedroom apartments and penthouses.

Talk to Chris, Julie and John in the display suite at the former Queensbridge Hotel, 1 Queensbridge St, Southbank. Call 8638 1888 or visit www.primapearl.com.au

MEET AT THE MEAT MARKET

“Happy cows and pigs make better meat. You treat them well, you eat well.”



Meat Market restaurant & bar manager Eamon Walmsley checks that everything is good.

This is the guiding principle of manager Eamon Walmsley as he steers South Wharf’s new Meat Market restaurant and bar to, hopefully, pre-eminence on Australia’s busy culinary stage.

“We focus on how the animals are treated, and how the food gets to us,” Mr Walmsley said.

“It’s about ethics. Australians have become a lot more concerned about what happens to the animals. We like to deal direct with the farmers.”

Meat Market head chef James Wilkinson sources most of the restaurant’s beef from Campbell Farms, in north-east Victoria.

Mr Wilkinson recently joined Meat Market from Baba Restaurant, in Brunswick East.

Mr Walmsley, a native of Belfast, has earned his management stripes at Melbourne’s Malthouse Theatre, Bertha Brown in Flinders St, and Richmond’s brunch central, Friends of Mine.

The media’s feeding frenzy with cooking shows and celebrity chefs has created what Mr Walmsley describes as “the brave new world” of hospitality.

“Melburnians now have such savvy palates,” he said. “Everything is getting faster.

“People are exploring new flavours, and expecting more from us. Melbourne has the badge of Australia’s food capital. We have to have the product to back it up.”

Mr Walmsley said it was hard to go past Meat Market’s 450-gram Victorian farm dry aged

rib eye (\$60).

The key to the flavour is in the hang drying technique.

“The goal is to eventually be hanging our own meat,” Mr Walmsley said.

The kitchen is the engine room that drives every restaurant, and Meat Market’s layout is in keeping with the world-wide “open kitchen” trend.

“Patrons can see the amount of work that goes into preparing their food,” Mr Walmsley said.

He agrees that the South Wharf promenade along the Yarra River is fast evolving into a prime culinary strip.

“South Wharf has so much talent, with all the elements in place – we just need to let the people know to come here.”

Mr Walmsley’s message for Southbank diners: Expect a generous serve of passion and perfection at Meat Market.

“Sometimes you can have the best dining experience at where you least expect it,” he said.

Meat Market is at 53 South Wharf Promenade, Southbank, overlooking the Yarra River in front of the Hilton Hotel and DFO shopping centre. Call 9008 8953 or visit www.meatmarketsouthwharf.com.au

See Business Directory (Page 23) for restaurant free offers

SOUTHBANK COMMUNITY CALENDAR



RED March 22 - May 5 <i>Melbourne Theatre Company, 140 Southbank Boulevard</i> This Tony Award winning play makes its way to Melbourne from the West End and Broadway, telling the story of tormented abstract expressionist Mark Rothko. info@mtc.com.au	AUSTRALIA DAY April 2 - May 26 <i>Melbourne Theatre Company Playhouse 100 St Kilda Road Southbank</i> From Jonathan Biggins, one of Australia's most talented comic writers comes a play about a day of speeches, sausage sizzles and cultural confusion. info@mtc.com.au	NEW 12: BOLD, BRAVE NEW ART FROM THE ART STARS OF TOMORROW March 17 - May 20 <i>Australian Centre of Contemporary Art 111 Sturt Street</i> 'New 12' is the Australian Centre for Contemporary Art's prestigious annual commissions exhibition. www.accaonline.org.au	TOP CLASS DANCE - VCE SEASON OF EXCELLENCE March 7 - May 11 <i>Melbourne Recital Centre 31 Sturt Street</i> Top Class presents eleven concerts by outstanding VCE performing arts students who have completed Dance, Drama, Theatre and Music www.vcaa.vic.edu.au
THE HISTRIONIC (DER THEATERMACHER) April 4 - May 5 <i>The Malthouse Theatre 113 Sturt Street</i> Hell hath no fury like an actor ignored. What happens when a talent that knows no bounds is dropped into a tiny hamlet more notable for the number of local pigs than its appreciation of theatre? www.malthousetheatre.com.au	MSO – EARS WIDE OPEN 1 April 3, 6.30pm - 8pm <i>Melbourne Recital Centre 31 Sturt Street</i> Richard Gill explores the musical masterworks which will be featured in the MSO concert season, in five fascinating 90-minute interactive events for all ages. www.melbournerecital.com.au	THE SEED February 17 - April 4 <i>Fairfax Studio, 100 St Kilda Road</i> Australian writer, Kate Mulvany, draws on her own family history in this witty examination of how tightly ties can bind. info@mtc.com.au	MELBOURNE NIGHT PHOTOGRAPHY WORKSHOPS Tuesdays and Thursdays, 6pm-8pm <i>3 Southbank Promenade</i> This night photography class runs in Melbourne's city centre and has all the night photography tips you'll ever need. For more info: www.pennykouloulas.com
ARTS CENTRE SUNDAY MARKET Sundays, 10am-4pm <i>Arts Centre 100 St Kilda Road</i> Meet over 80 of Victoria's finest artisans first hand. Discover how these unique artworks are made, chat directly about the products, inspirations and techniques. For more information: www.theartscentre.com.au	CHUNKY MOVE DANCE CLASSES Mondays to Thursdays 6.30pm-8pm, Saturdays 10am-1.15pm <i>111 Sturt Street</i> Chunky Move dance classes are the perfect way to unwind, get fit and improve flexibility and strength. For more info: www.chunkymove.com		THE PLAGUE DANCES April 14 - April 29 <i>The Malthouse Theatre 113 Sturt Street</i> The phenomenon of dancing mania has left a mysterious trail through history – entire communities infected with a spontaneous urge to dance until they literally drop. www.malthousetheatre.com.au
	FREE TAI CHI IN SOUTHBANK Every Friday, 8am - 9am <i>Queensbridge Square</i> Because of the lack of open and recreations space on Southbank, the Melbourne City Council has funded weekly Tai Chi classes on Southbank. The instructor, provided by Tai Chi Australia structures a class that is suitable for beginners and all ages.	FIREBIRD TRIO PERFORMS 'BRAVE NEW WORLD' April 4, 7pm - 9pm <i>Melbourne Recital Centre 31 Sturt Street</i> Melbourne's Firebird Trio performs exhilarating piano trio repertoire by Beethoven, Copland, Ives and Stravinsky, with Guest speaker Dr. Barry Jones. www.firebirdtrio.net	TINALLEY STRING QUARTET: 'A FEAST OF LANGUAGES' April 10, 7.30pm - 9.30pm <i>Melbourne Recital Centre 31 Sturt Street</i> Program 1 of the Tinalley String Quartet's 2012 National Concert Series 'A feast of languages' celebrates language, discourse and humanity. www.tinalley.com.au
MSO – EMPEROR CONCERTO April 19 - April 21 <i>Melbourne Recital Centre 31 Sturt Street</i> The culmination of a special three-year collaboration between the MSO and Finnish pianist, composer and conductor, Olli Mustonen. www.mso.com.au	MSO METROPOLIS NEW MUSIC FESTIVAL – ON A WIRE April 27, 8pm - 10.30pm <i>Melbourne Recital Centre 31 Sturt Street</i> Come aboard a wild ride through contemporary American orchestral music. Michael Gordon's collaboration with visionary film-maker Bill Morrison. www.mso.com.au	VIDEO GAMES UNPLUGGED: SYMPHONY OF LEGENDS April 12, 7pm <i>Plenary Hall, Melbourne Convention and Exhibition Centre</i> This world-first presentation features awesome music from some of the greatest video games ever, played live by a big orchestra and including in-game visuals.	GREAT PLAYS OF THE 20TH CENTURY Friday April 13, 10am - 12pm <i>Ross House 247 Flinders Lane</i> Tutored by Tony Page: writer, director and poet. Read, discuss, go for coffee! U3A Melbourne City, the learning organisation for people over 50 who are no longer working full-time. www.u3amelbcity.org.au
ELVIS - ONE NIGHT WITH YOU April 20 - 21 <i>Crown Entertainment Complex, 8 Whiteman Street</i> VOTA Promotions proudly presents this special 2 hour musical presentation starring Mark Andrew and hosted by Frankie J Holden. www.crownmelbourne.com.au	SORRY SEEMS TO BE THE HARDEST WORD March 21 - April 8 <i>The Malthouse, 113 Sturt Street</i> Country music celebrity, US presidential candidate and now global icon for peace, Tina C is on an Australasian mission with 'Sorry Seems to be the Hardest Word'. www.malthousetheatre.com.au	SOUTHGATE'S MAD HATTER'S TEA PARTY April 7 - April 9 <i>3 Southgate Avenue, Southbank</i> This Easter, the Queen of Hearts is hosting a magical tea party that will transform Southgate into something out of a storybook, and everyone is invited to attend! www.celebratesouthgate.com.au	
ST JOHNS SOUTHGATE-COMMUNITY SERVICES Every Sunday in April <i>St Johns Southgate, 20 City Road</i> 9am Sunday-Traditional, liturgical worship; 11am Sunday-Informal, liturgical worship; 7pm Sunday-Informal, contemporary worship; 12.10 pm - Wednesday - 20-min informal service.	SIBLINGS IN SYNC February 18 - April 13 <i>Victorian Arts Centre 100 St Kilda Road</i> IA music therapy workshop for young people with special needs and their siblings. Designed to promote shared abilities and co-operation through creative music making. www.theartscentre.com.au	INSTANT ROCKSTAR February 18 - April 13 <i>Victorian Arts Centre 100 St Kilda Road</i> Instant Rockstar lets kids unleash their inner pop diva and guitar hero. Create a hit song using lots of cool music samples, and then use the track to make a music video. www.theartscentre.com.au	ADAM & SELINA - MASTERS OF ILLUSION April 28, 7.30pm - 10.15pm <i>Crown Entertainment Complex, 8 Whiteman Street</i> Adam & Selina are the new breed of modern day illusionists that have captivated audiences across the world in sold out theatres and on television. www.crownmelbourne.com.au

BUSINESS DIRECTORY

If you are not on this list then email
advertising@southbanklocalnews.com.au or phone 8689 7980
to discuss how you can get on this list for FREE!!

ACCOUNTING & FINANCE

TAX AID
The Docklands Income Tax Specialists

THE PROFESSIONALS WHO CARE AND THINK FOR YOU

744 Bourke St, Docklands, 3008
tel: 9600 1100
fax: 9600 1150
email: tony@taxaid.com.au

ADULT SERVICES

LINGERIE, TOYS, BOOKS, DVD's & MORE

Open 7 days til late

Sexy Secrets
UNITE YOUR PASSION

185 Clarendon Street (near Just Tools)
Ph: 03 9696 7399

www.sexysecretshop.com.au

ATTRACTIONS

An experience above all else

eureka skydeck 88

Open 10am until 10pm Daily (last entry 9.30pm)
Riverside Quay Southbank Melbourne Australia
www.eurekaskydeck.com.au 03 9693 8888

SHOWTIME
SHOWTIME EVENTS CENTRE
SOUTH WHARF

Weddings - Celebrations - Corporate Events

Melbourne's Best Venue

Ph: (03)9008 8954
61 South Wharf Promenade, South Wharf
www.showtimeevents.com.au

COMPUTERS

DOCKCOM
DOCKLANDS COMPUTER SPECIALIST
AND IT CONSULTANT

Level 2 / 710 Collins St,
Docklands, Victoria 3008

Call: (03) 9008 7908

WWW.DOCKCOM.COM.AU
VISIT ONLINE COMPUTER STORE

FURNISHING

AZIZA
DESIGNS

282 COVENTRY STREET,
SOUTH MELBOURNE

T: 9699 4664 • F: 9699 4806
WWW.AZIZADESIGNS.COM.AU

SOUTHBANK Local NEWS

CONNECTING BUSINESSES
WITH SOUTHBANK

HOUSE CLEANING

Butterfly Cleaning

Cleaning
Organising
Ironing
Reliable
Good references

0410 423 565

ENVIRONMENTALLY FRIENDLY PRODUCTS

LAWYERS

Fitzroy Lawyers

Business, property & family law
188/79 Whiteman St, Southbank
fitzroylawyers@gmail.com
Tel: 0415 189 948

MARRIAGE CELEBRANT

'Links of Love'

Affordable Ceremony

Mr. Jan Gielnik cmc
Mob: 0417 011 086
www.affordableceremony.com.au

Roath
• CELEBRATIONS •
Wedding Celebrants
Your Wedding - Special to you, Special to us.

www.roathcelebrations.com | P: 0411 544241 or 0402 787 409

MEDICAL

THE TRAVEL DOCTOR
TM+VC
TRAVELLERS MEDICAL & VACCINATION CENTRE

Travel Doctor Plus+
Docklands Medical & Lifestyle Clinic

Level 4, 700 Collins Street, Docklands

Open Monday to Friday 8.30am - 5.00pm
8622 6333 | docklands@traveldoctor.com.au

PETCARE

PETstock
... part of your family!

...for all your
pet care needs

PETstock 5th Melbourne
211 Ferrars St, (03) 9699 4234

Port Melbourne Veterinary Clinic & Hospital

Friendly professional pet healthcare
Open 7 days a week
Mon - Fri 8am to 7pm
Sat - Sun 9am to 5pm

For advice and appointments Ph: 9646 5300
Web: www.portmelbournevet.com.au
109 Bay Street, Port Melbourne.

PHOTO RESTORATION

MEMORIES GRAPHIC DESIGN

• Restoration • Preservation • Presentation

Family Memoirs
Weddings
Tributes/Memorials
Image Processing

Birthday Celebrations
Anniversaries
Word Processing
Photography

Telephone: 0414 456 205
Email: davidbeech@me.com

REAL ESTATE

CityResidential
REAL ESTATE

Richard Mindroui
MANAGING DIRECTOR
E richardm@cityresidential.com.au
M 0437 250 964

50 Lorimer Street, Docklands
Phone 8614 8999 www.cityresidential.com.au

evolve
REAL ESTATE

9690 8800

25 Queensbridge Street,
Southbank VIC 3006
www.evolverealestate.com.au

prima pearl
THE GEM IN APARTMENT LIVING

ph 8638 1888 or visit primapearl.com.au

RESTAURANTS, CAFES & BARS

Bob's
Steak & Chop House

~ The first traditional and
upscale steakhouse of such style
and class to come to Docklands ~

OPEN 7 DAYS FOR
LUNCH AND DINNER

Established 1993

FOR RESERVATIONS: CALL: 9642 3350
MAIL: info@bobs-steakandchop.com.au

GROUND FLOOR, NATIONAL FOODS CENTRE
737 BOURKE STREET, DOCKLANDS
(OPPOSITE ETIHAD STADIUM)

BOHEMIAN
BAR & RESTAURANT

Viva España

Phone: (03) 9682 0566
35 Dukes Wharf, South Wharf
www.thebohemian.com.au

* See website for terms & conditions

HAVE A POT
OUR SHOUT*

COMMON MAN
RESTAURANT BAR

Good food, Good Friends, Good Times

Phone: (03)9696 3774
39 Dukes Walk, South Wharf
www.thecommonman.com.au

* See website for terms & conditions

**THE COLONIAL
TRAMCAR
RESTAURANT**

If you are looking for the ideal gift,
visit our website www.tramrestaurant.com.au
or telephone 9696 4000

LA CAMERA
www.lacamerasouthgate.com

We can be found on the mid level above
the Southgate Food Court.

p: 9699 3600
e: eat@lacamerasouthgate.com

Free
Appetiser*

MEAT MARKET
SOUTH WHARF

MEAT WITH FRIENDS

Phone: (03)9008 8953
53 South Wharf Promenade, South Wharf
www.meatmarketsouthwharf.com.au

* See website for terms & conditions

SERVICED OFFICES

**World's Finest
Office Solutions**

- Premium unbranded office facilities
- Dedicated receptionist
- Full time or temporary workspace
- Boardrooms & meeting rooms
- Global network of business lounges
- No long term commitments

T | 9982 4527
melbourne@servcorp.com.au

SERVcorp

RIVERSIDE QUAY SOUTHBANK | DOCKLANDS | MELBOURNE CBD

SPORT & RECREATION

kingpin BOWLING
drink, bowl, party!

OPEN 7 DAYS • 10AM - 2AM

Call 13-2695 • www.kingpinbowling.com.au

STORAGE

Access SELF STORAGE

Serving you for over 25 years!

Affordable - Convenient - Secure

We also sell boxes!

223 Normanby Road (cnr Montague Street)
South Melbourne Victoria 3205
Tel: 03 9646 5322
www.acestor.com.au OPEN 7 DAYS

SUPERMARKET

FOODWORKS
Works for me!

180 City Road, SOUTHBANK
P: 9686 1561



legal,
financial &
property
specialists

9690 8800
25 Queensbridge Street,
Southbank VIC 3006
info@evolverealestate.com.au

• RESIDENTIAL • PROPERTY MANAGEMENT • COMMERCIAL

FOR SALE



Level 53/1 Queensbridge Street, **SOUTHBANK**
DESIGNER LIVING OF THE HIGHEST CALIBRE

4 3 2

Set in one of Southbank's most revered locations, this splendid high-rise apartment presents immaculate entertaining spaces, tranquil surrounds and quality amenities.

Contact Gary Cakir 0413 522 533

FOR SALE



3707/1 Freshwater Place, **SOUTHBANK**
FULLY FURNISHED

1 1 1

Perfectly positioned on the banks of the Yarra River between Crown Casino and Southgate, is this stunning apartment. Comprising of 1 bedroom with floor to ceiling windows capturing breathtaking bay views, and the glorious night lights west of the city.

Contact Rebecca Murray 0410 319 109

FOR SALE



3302/200 Spencer Street, **MELBOURNE**
ENJOY THE INNER-CITY LIFESTYLE

2 1 1

With a generous size of approximately 84sq with balcony, this property would be suited to investors, students, new families, and also purchasers wishing to enjoy a change in scenery.

Contact Shen Li 0430 431 186

FOR SALE



1001/8 Kavanagh Street, **SOUTHBANK**
THE NEW STANDARD OF LUXURY

2 2 1

Situated in the ever-popular Arts Centre Precinct is this delightful 110m2 residence, offering a standard of living that is second to none. An endless list of features await you.

Contact Shen Li 0430 431 186

FOR SALE



109/99 Whiteman Street, **SOUTHBANK**
AN ABSOLUTE DELIGHT!

3 2 1

Too good to resist, this modern Southbank apartment has plenty of room to move as well as being positioned in a great location, only minutes from all the excitement of the precinct. Crown Casino, Southbank Promenade, the CBD, Docklands - it is all just a short trip from your front door.

Contact Shen Li 0430 431 186

FOR SALE



SOLD IN 8 DAYS

4509/1 Queensbridge Square, **SOUTHBANK**
LUXURY LIVING AND STYLE!

1 1 1

This large 1 bedroom apartment with Study offers executive living at its finest with floor to ceiling views across the Yarra and Port Phillip Bay. Spacious open - plan living and more.

Contact Rebecca Murray 0410 319 109

FOR SALE



1102/283 City Road, **SOUTHBANK**
EXPANSIVE VIEWS, EXCELLENT LOCATION

2 1

Located in a very prominent position, with outstanding views of the City & Botanical Gardens is this splendid 2 Bedroom apartment with room to move. Brand new!

Contact Shen Li 0430 431 186

FOR SALE



22/10 Tennyson Street, **ST. KILDA**
CLOSE TO THE HEART OF ST KILDA!

2 2 1

An ideal residence for the busy professional or a savvy investment for the future. Beautifully appointed modern apartment with timber flooring in the large open-plan lounge/dining area.

Contact Rebecca Murray 0410 319 109

FOR SALE



SOLD IN 10 DAYS

1002/109 Clarendon Street, **SOUTHBANK**
SOUTHBANK STYLE - MARVELLOUS VIEWS

2 1

Wonderfully presented, & offering a great rental return is this delightful residence on the 10th Floor of one of Southbanks newest developments.

Contact Rebecca Murray 0410 319 109

WANTED TO BUY

APARTMENTS

4 3 2 Southbank
3 2 2 Under \$900,000
2 2 2 Under \$700,000
1 2 1 \$500,000

RENTALS

1001/8 Kavanagh Street, SOUTHBANK
\$900 p/w
2 Bed 2 Bath 1 Car
1401/1 Freshwater Place, SOUTHBANK
\$1400 p/w
3 Bed 2 Bath 2 Car
Available July



OFF THE PLAN

Docklands - Apartments - 1 BR - 3 BR
\$410k - \$1.1m - Ready End 2013
Southbank - Apartments - 1 BR - 2 BR
\$375k - 750k - Ready May 2013
South Melbourne - Apartments - 1 BR - 2 BR +
Study - \$405k - \$842k - Ready Mid 2013
North Melbourne - Apartments - 1 BR - 2 BR
\$392k - \$574k - Ready October 2012
Prahran - Apartments - 1 BR - 3 BR
\$365k - \$865k - Ready Early 2013
Malvern - Apartments - 1 BR - 3 BR
\$415k - \$1.1m - Ready September 2012
Elwood - Apartments - 1 BR - 3 BR
\$517k - \$950k - Ready July 2012
Footscray - Apartments - 1 BR - 2 BR
\$301k - \$476k - Ready Soon
West Footscray - Apartments - 1 BR - 2 BR
\$295k - \$489k - Ready May 2013
Travancore - 1 BR - 2 BR
\$495k - \$625k - Ready End 2012

CONNECT:



evolvesouthbank



evolvesouthbank

www.evolverealestate.com.au