

The voice of Southbank, South Wharf & Montague

SOUTHBANK Local NEWS

■ River committee meets

Page 4

■ Montague Forum wrap up

Page 7



■ Good coffee good conscience

Page 11

■ The VCA's exhibition of inches

Page 12



At last! Whiteman 'canal' to be drained

By Sean Car

The City of Melbourne is finally responding to years of major flooding issues on Whiteman St with drainage upgrade works starting this month.

Touted by council as its “highest drainage priority”, residents and businesses have been dealing with floods along Whiteman St for years due to the area’s low-lying nature.

The \$1.02 million works began on June 5 and will take about three months to complete.

In a letter addressed to residents in May, City of Melbourne principal engineer infrastructure Michael Norton said locals could expect ongoing disruptions while the upgrades took place.

“By their nature, drainage works can be disruptive,” he wrote. “We anticipate that the technology used to undertake these works will substantially reduce the noise and disruption traditionally associated with drainage works.”

According to council, the works will involve the installation of about 220 metres of new underground drainage infrastructure, primarily using micro-tunneling technology.

The works will cross nearby tram tracks opposite 99 Whiteman St and pass through Normanby Rd Reserve, where it will connect to existing council drainage adjacent to the Port Melbourne tram junction.

Council provided an update on the project in its recent 2017/18 draft budget, noting the works as part of its \$4.59 million flood mitigation program.

It also noted that a Clarendon St flood mitigation drainage design and underground services/land tenure investigation was in

progress, with tenders to be called in June. A council spokesperson confirmed that this would include further drainage and pump station works near the Melbourne Convention and Exhibition Centre.

Due to its low-lying nature and because many of the existing storm water pipes sit lower than water level in the Yarra River, the area has long been prone to flooding.

However, according to council, the scale and incidence of the flooding has been exacerbated significantly since Yarra Trams concluded its upgrade works to the Port tram junction in February 2016.

While former councillor Stephen Mayne last year informed residents that works to comprehensively alleviate flooding in the area would cost the city in the realm of \$130 million, council has yet to announce any further long terms plans.

Southbank Local News contacted council to confirm whether current works were part of a long-term plan but its spokesperson did not comment on any further plans.

Whiteman St resident Peter Gibbs said if the works did indeed solve flooding issues in the area it would be cause for great celebration.

“Fingers crossed their efforts resolve the problem and heavy rains or king tides don’t extend the works extra months,” he said. “Tongue-in-cheek, residents should consider having a street party after (and if) the drainage works are completed and proven effective to celebrate the occasion.”



South Melbourne Primary School principal Noel Creece holds up a stack of enrolments at the site of the new school.

Enrolments now open!

Expressions of interest for the 2018 school year at Southbank’s new vertical primary school on Ferrars St are now open to local families and inaugural principal Noel Creece has already hit the ground running! Read more on page 8.

FOODWORKS
Works for me!



WE ARE YOUR LOCAL GROCER!
182 City Road, SOUTHBANK

Suite 108, 198 Harbour Esplanade
PO Box 23008 Docklands 8012
Tel: 8689 7980 Fax: 9602 2929
www.southbanklocalnews.com.au

Editor: Sean Car

Publisher: Shane Scanlan

Tel: 8689 7980 Fax: 9602 2929
advertising@southbanklocalnews.com.au

Reader contributions are welcome.
Please send articles and images to
news@southbanklocalnews.com.au

Deadline for edition 65 is July 6.

CONNECT

Keep up to date with local news & events.



Follow us on Twitter
@SOUTHBANK_News



Like us on Facebook
Southbank Local News



Like us on Instagram
SouthbankLocalNews



The Boyd Community Hub on its opening day in July 2012. The facility will celebrate its fifth birthday next month.

Boyd to celebrate five wonderful years

Southbank's civic heart the Boyd Community Hub has come a long way since opening to the community in July 2012.

Our local community facility will celebrate five years of servicing Southbank's ever-growing community in July with a host of activities and locals are invited to join in the festivities!

Instead of hosting one singular event, the team has opted to spread the celebrations over a number of days, beginning with a wine, cheese and jazz night on Thursday, July 6. The event will start at 5pm and finish at 7pm.

On Friday, July 7, Boyd will host a theatre performance for families from 3:30pm to 5pm where local families are invited to a theatre show and birthday party. The event will feature a big birthday cake cutting, party hats and balloons. Children will be asked to

help sing Happy Birthday to Boyd too!

Special Happy Birthday cards will also offer all of Boyd's user groups, library patrons, playgroup members and locals the chance to write a birthday message to Boyd. These cards will then be used to form a special installation in the foyer and lounge.

This will form part of a larger installation in the foyer and lounge area that will feature for three weeks around the fifth birthday celebrations.

The team at Boyd will host a number of other activities as part of the celebrations, which will be announced closer to its fifth birthday. For updates and more information you can follow Boyd on Facebook at [facebook.com/BoydCommunityHub/](https://www.facebook.com/BoydCommunityHub/)

Master plan imminent

The City of Melbourne will release its draft master plan on the future transformation of Southbank Boulevard and Dodds St for community engagement this month.

Council announced back in April that the master plan's release had been delayed until June-July and the community would soon get to have a glance at what council has in store for the 2.5 ha of new open space.

The City of Melbourne's director of city design Professor Rob Adams confirmed in February that construction for the \$35 million project would start in early 2018.

Council recently announced an \$11 million down payment towards stage one of the project, which will start with a transformation of Dodds St near the Victorian College of the Arts (VCA).

For more information visit participate.melbourne.vic.gov.au/southbankboulevard



A render of a proposed layout of Dodds St.



Broad Bean
ORGANIC GROCER

EAT.DRINK.SHOP
ORGANIC

SHOP 3, 26 FANNING ST, SOUTHBANK



broadbeanorganicgrocer



broadbeanorganicgrocer

OPEN
7 DAYS

MON - FRI 7AM - 7PM
SAT 9AM - 6PM
SUN 10AM - 6PM

Broad Bean
ORGANIC GROCER



Renders released by Melbourne Square developer OSK Property last month showing a glimpse of how Southbank's new park on Kavanagh St will appear.

A glance at Southbank's new park

By Meg Hill

Southbank's open space deficit is soon to be improved with a European-style public park included in the first stage of OSK Property's Melbourne Square project on Kavanagh St.

The developer released the first renders of the park last month, with construction work to get underway next month.

The project will turn a barren car park bounded by the Westgate Freeway and Kavanagh, Balston and Power streets into Melbourne's largest mixed-use development.

Melbourne Square was approved by the Department of Environment, Land, Water and Planning late last year and has recently had its stage one designs approved.

Almost 4000 sqm is designated to the park space, which will include water features, piazza-style spaces and an outdoor terrace.

"We believe this public realm will draw people from all over Southbank and provide

an important linkage from the CBD through the arts precinct to the Botanic Gardens," executive chairman of OSK Property Tan Sri Ong said.

OSK's complete project spans six towers, including four luxury apartment buildings, a commercial tower and a hotel as well as supermarket, childcare and health spaces.

OSK has partnered with renowned Australian architecture firm Taylor Cullity Lethlean (TCL), known for its award-winning work, including Birrarung Marr and the Sidney Myer Music Bowl.

"Melbourne Square's dynamic public realm will be a centrepiece for Southbank, one that can be actively programmed for events, or enjoyed at leisure," TCL managing director

Perry Lethlean said.

Melbourne Square adds to the open space soon to be created through the City of Melbourne's Southbank Boulevard linear and Boyd Community Hub parks.

Work on the Southbank Boulevard Park is set to begin late this year, adding 25,000 sqm of space with an open market value of around \$140 million.

The City of Melbourne is still working through community engagement processes in planning for the park on the Boyd Community Hub site.

Southbank Residents Association (SRA) president Tony Penna said while the development presented real opportunities for Southbank, he was disappointed by the

developer's decision to change the project's name.

"Recently we note the name has changed from Kavanagh Park to Melbourne Square," he said. "If this is the case, SRA suspect it is for marketing appeal to the overseas investors who can connect with the name Melbourne Square but maybe not with Kavanagh Park."

"Such a change, although only in a name, detracts from that psychological connection with being local. SRA is disappointed with the name change."

How do you think the new park looks? Send your thoughts to:

news@southbanklocalnews.com.au



LUCAS

WE KNOW
VERTICAL
LIVING BETTER
THAN ANYONE.

THAT'S OUR
HERITAGE.

lucas real estate - vertical living specialists
9091 1400 | lucasre.com.au

'Give us a chance': river committee

The Lower Yarra River Management Advisory Committee (LYRMAC) has asked locals to withhold judgement on its success until July next year.

The State Government established the committee in February, having previously rejected a recommendation for an independent local waterways authority.

It is the 15th such committee to be established in the past 20 years.

The committee comprises Parks Victoria board member, Christine Trotman, City of Melbourne director, Linda Weatherson, and private sector representative Jonathon Metcalfe.

The committee was introduced to the local business community at a Docklands Chamber of Commerce event on May 17.

Local business associations were disappointed that the government appointed the committee rather than dismantling the fragmented and bureaucratic waterways governance that is widely believed to be the major obstacle to economic activation.

Mr Metcalfe said: "My feeling is that the time to make the judgement on whether we have been effective as a committee is in July 2018."



Committee chair Christine Trotman.

"Measure us by results. I can say that the three of us on the committee are very passionate about making a difference, so we'll work very hard to knock off as many of these important issues as we possibly can."

Committee chair Christine Trotman spoke briefly at the start of the session but quickly handed control to Parks Victoria regional director Chris Hardman.

Mr Hardman advised the audience to move on from its disappointment and work closely with both Parks Victoria and the City of Melbourne to achieve better outcomes for

the local waterways.

He rejected the idea of an independent waterways authority for the lower Yarra, claiming it would actually lead to greater duplication.

"What will happen is that you have a waterways authority here and upstream you will have a different one. In the Maribyrnong you will have a different one and out in Port Phillip Bay you will have a different one," he said.

"So, if you want that, you will introduce greater complexity as people move between those areas. Alternatively, we can do the best we can to make this work. Everyone should get on board and see if we can a good show of this. If we can, then the problem is solved."

"What's the problem we are trying to solve? We need to activate the waterways, get the investment in the waterways and those sorts of things."

"So we can work together and do that of we can lament a recommendation that wasn't taken up by the government of the day."

"And, you know what? If it doesn't work and you're not satisfied, then re-prosecute the case in the future," Mr Hardman said.

The president of the Melbourne Passenger Boating Association, Jeff Gordon, said: "The government has recognised that a first class city needs a first class passenger boating industry and has provided \$2 million dollars

for a new floating landing at Southbank and recognises that the Melbourne passenger boat industry is worth at least \$60million per year to the Melbourne economy."

"The commercial vessels of Melbourne showcase the water and the waterfront of Melbourne to its inhabitants and visitors in a safe and enjoyable way."

"However the industry will die a death by a thousand cuts if the government continues its cost recovery model with the Tour Operators Licence charging every passenger \$2.40 per trip plus extra charges for landings where they pick up and drop off clients."

Yarra River Business Association (YRBA) executive officer Tim Bracher said: "We hope that the function was the start of a re-engagement between Parks Victoria and the river community, which has been absent for most of the past decade."

"We are looking forward to the long overdue floating berthing pontoon at Southgate and have impressed upon Park Victoria that its construction must not impinge on the key revenue period for river operators"

"Parks Victoria's new CEO Matthew Jackson appears to be cut from a different cloth, so we're hoping for a much more business friendly environment along the river"

Mr Jackson will be guest speaker at the next Yarra River business lunch on 16 July at Rivers Edge Events. For more details see page 10 of this edition.

Let our knowledge be your greatest asset

Melcorp
Real Estate



SOLD IN 14 DAYS

111/83 Queensbridge Street

A passion for Southbank gives Aisha Coe a noticeable edge when developing specialised Marketing strategies to successfully sell her clients properties. While this property was only on the market for two weeks, generating four genuine offers, Aisha negotiated a sale and a successful outcome for both the vendor and purchaser.

For more information on how Aisha can be your greatest asset, contact her today!

Aisha Coe
Senior Sales Executive
0439 888 837
aisha@melcorp.com.au



SOLD OFF MARKET

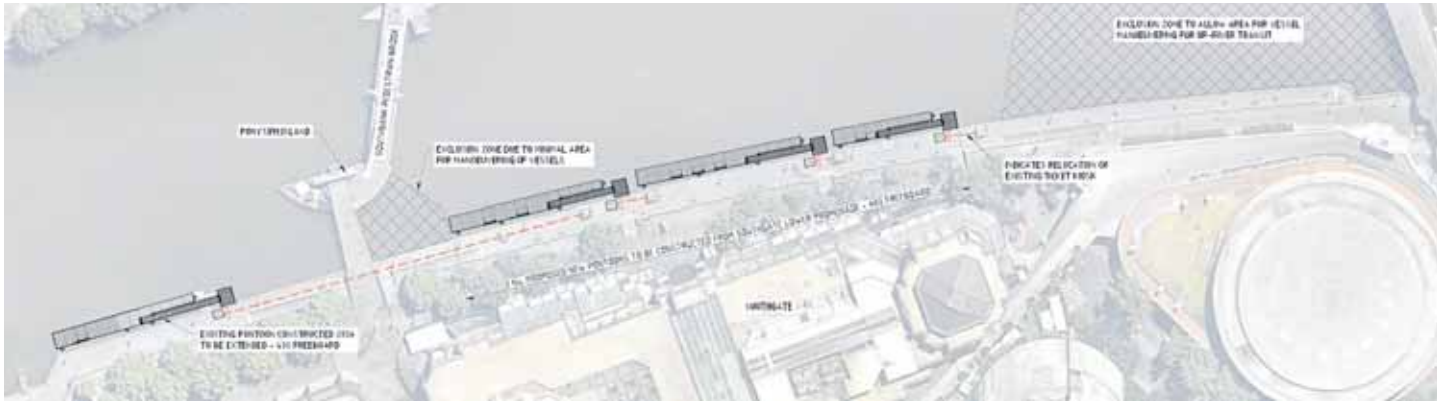
5307/35 Queensbridge Street

Sergio Lopez's formidable industry knowledge supports his positive approach, diligence and commitment to provide his client with the best possible outcome on every possible occasion. Finding the right purchaser enabled Sergio to sell this property off market, whilst achieving a record price for this type of property within the building.

To find out how Sergio can help you achieve leading results, contact him today!

Sergio Lopez
Senior Sales Executive
0404 659 330
sergio@melcorp.com.au





A proposed layout of the floating landings at Southgate provided by Parks Victoria.

Delay on Southgate floating landings

More than a year since former environment minister Lisa Neville announced it, Parks Victoria (PV) has achieved a “public consultation” stage for floating landings at Southgate.

Parks Victoria had led operators to believe the works would be finished this winter.

But, with this deadline not expected to be met, operators are asking PV not to start until next winter.

Yarra River Business Association executive officer Tim Bracher told *Southbank Local News* that operators earned 80 per cent of their income between November and March.

“If they can’t get the new infrastructure in place before then, Parks needs to wait now until the off-season in 2018,” Mr Bracher said.

A Parks Victoria spokesperson could not give *Southbank Local News* a completion date.

The spokespersons said: “Following the consultation, Parks Victoria will review and finalise plans for the proposed floating landing and the project will be put out to tender.”

“The exact timing for construction will depend upon a number of elements

including feedback from key stakeholders, contractor availability, weather and conditions.”

Parks was given \$2 million by the State Government in 2016 to construct the pontoons. Industry sources believe the actual cost of the task to be less than \$1 million.

The PV spokesperson said: “Administration for the Lower Yarra River Management Advisory Committee and Parks Victoria is not part of the allocated \$2 million.”

“The State Government has allocated \$2 million for the installation of the proposed floating landings and refurbishment of the ticket booths at Southgate to support the commercial passenger boat industry.”

There is also concern that PV plans to recover the \$2 million by charging river operators to use the pontoons. The spokesperson did not answer *Southbank Local News’s* question in relation to this.

Lower Yarra River Management Advisory

Committee chair Christine Trotman said: “The Lower Yarra River Management Advisory Committee is pleased to see the Southgate Floating Landing Project advance to the stakeholder engagement phase. It’s important to ensure the services provided for visitors to Melbourne provide the best and safest experience possible.”

“The Southgate Floating Landing project will ensure that commercial passenger boat facilities meet contemporary safety and accessibility standards which continue to enhance Melbourne’s reputation as not just the world’s most liveable, but also the world’s most visitable city.”

PV executive director Chris Hardman said: “Parks Victoria is working with the Lower Yarra River Management Advisory Committee and key stakeholders to ensure the proposed floating landing upgrade at Southgate will strengthen the commercial boating industry and meet the needs of the thousands of visitors who experience boat tours on the Yarra River each year.”

Diversion for Wandin

Disqualified Melbourne councillor Brooke Wandin has escaped conviction on electoral fraud charges.

The former “Indigenous Voice” candidate was granted a diversion order in the Melbourne Magistrates Court on June 6.

Ms Wandin was charged by Victorian Local Government Investigations and Compliance Inspectorate with unlawfully nominating for last October’s City of Melbourne election. She was further charged with “failure to declare”.

While she was declared elected by the Victorian Electoral Commission (VEC) after the October 22 election, Ms Wandin was never sworn in.

It is understood Ms Wandin did not challenge the allegation that she incorrectly declared that she lived at the Kensington address of former councillor Richard Foster.

It is understood that she argued that she naively trusted the advice of others and had unknowingly broken the law.

Mr Foster is facing similar charges and is due to face court on July 18. It is understood he will be contesting the charges.



Disqualified councillor Brooke Wandin.

ENA Greek Street Food is part of Melbourne’s thriving dining culture. Situated on the banks of the Yarra River, ENA is bringing a modern twist to food inspired by the streets of Greece. Our menu encompasses the finest offerings from the land and sea.

We invite you to share the feasting with friends and family. YIAMAS!

Shop M4/9 Mid Level Southgate Complex, 28 Southgate Ave, Southbank
Ph: 9690 6205 Menu: enagreekstreetfood.com.au

GET \$10 OFF YOUR FIRST ORDER with code: **ROOMELE**
* Deliveroo Takeaway only

Local degrees on offer

In the ever-changing world of sports media and sport business, the need for flexibility and a wide-ranging skill set has never been more important.

Offered at Southbank's Holmesglen City Campus on St Kilda Rd, sports media and sport business degrees are designed to ensure students who aspire to work in the industries have what they need to succeed.

For course leader, Robbie Coyle (pictured), engaging with industry leaders is a hallmark of both courses.



"Our degrees are the most industry engaged of their type," he said. "Our partners, such as Fox Footy, AFL Victoria, Basketball Victoria, Cricket Victoria, the Melbourne Stars and SEN are leaders in their field."

As part of their studies, students work closely with the partners to gain valuable experience and the opportunity to put their skills to the test.

The extensive industry engagement opportunities involves students working with clubs from the Victorian Amateur Football Association to develop a range of strategy documents, attending field trips and hearing from a range of leading professionals before completing a 228 hour internship in their final year.

"Our internship program has been a huge success. Our students learn so much from

the experience and some of them have received ongoing work opportunities with our partners, with three graduates currently working with Fox Footy, beyond their internships."

According to Mr Coyle, the courses' boutique class sizes also add to the learning experience.

The courses have also won praise from industry leaders, such as Sportspeople global recruitment executive Ros Holding.

"The program is really addressing and progressing the right questions to make sense of transition into the sector even more possible for graduates," she said.

Both degrees are now accepting applications for second semester commencing 24 July 2017. To apply visit holmesglen.edu.au/sportsmedia or holmesglen.edu.au/sportbusiness.



A photo taken from last year's Welcome Dinner at the Boyd Community Hub.

Welcome feed on again

Following the success of last year's inaugural Southbank event, the Welcome Dinner Project will return to the Boyd community Hub on June 29.

Supported by the City of Melbourne, more than 35 locals gathered for last year's dinner in September and the positive response has prompted organisers to return to Southbank.

The Welcome Dinner Project connects people who are new to Australia with the established community over a shared meal to celebrate the diversity in our neighbourhood.

Both established Southbank residents and newly arrived people are welcome to attend and bring a dish and connect with others.

Guests are invited to bring a plate of food traditional to their culture or that reminds them of home with the aim of breaking down barriers and connecting over a meal. The dinner starts at 6pm.

Registration for the dinner is essential and can be done so at southbankcommunitydinner.eventbrite.com.au

For more information on the Welcome Dinner Project visit www.joiningthedots.org

MID YEAR COURSES AT HOLMESGLEN CITY CAMPUS holmesglen

BUILDING CONSTRUCTION AND DESIGN

- 22268VIC Advanced Diploma of Building Design (Architectural)
- CPC50210 Diploma of Building and Construction (Building)
- CPC40110 Certificate IV in Building and Construction (Building)

BUSINESS AND FINANCE

- MPA14 Master of Professional Accounting
- SCPDDM16 Professional Diploma of Digital Marketing *
- BSB42615 Certificate IV in New Small Business (Start Your Own Business)

FASHION DESIGN

- MST20616 Certificate II in Applied Fashion Design and Technology

REAL ESTATE

- HSSCPP0001 Agent's Representative Course

SPORT

- BSPB16 Bachelor of Sport Business
- BSM13 Bachelor of Sports Media

APPLY NOW, START JULY
Call 1300 639 888
 Visit Holmesglen City Campus,
 332 St Kilda Rd, Southbank
holmesglen.edu.au

* SCPDDM16 Professional Diploma of Digital Marketing is a non-award Australian Qualification Framework course. CRICOS Provider Code: 00012G. TOID: 0416

The conversation begins

By Sean Car

Last month's inaugural Montague Community Forum marked the beginning of an important discussion regarding the transitional development of the Montague Precinct.

Some 40 local residents, business owners and community representatives attended the forum held at the Golden Fleece Hotel on May 16, which focused on traffic management in the precinct.

Sponsored by *Southbank Local News* and hosted by the Montague Community Alliance (MCA), the forum covered many important current day issues affecting residents and businesses.

Local Member for Albert Park and State Minister for housing, ageing and disability, mental health, creative industries and equality, Martin Foley, was part of a distinguished panel that led the discussion.

Other panelists included City of Port Phillip Mayor Bernadene Voss, Fishermans Bend Ministerial Advisory Committee chair Meredith Sussex, VicRoads director of planning and traffic David Teague and South Melbourne Primary School principal Noel Creece.

Montague is the first of five Fishermans Bend precincts to experience a major flurry of development approvals and applications, following former planning minister Matthew Guy's decision to rezone Australia's biggest ever urban renewal area as capital city zone.

While the Labor Government's recast vision for Fishermans Bend sets out important strategies for addressing the future, Montague residents and business owners are facing more immediate challenges.

With a school and two residential towers currently under construction and many more on the way, daily increases and changes in traffic flows throughout the precinct are already causing issues.

Mayor Voss got the forum underway with a presentation on the precinct, which featured detailed diagrams and an overview of current planning approvals and applications.

Each panelist gave a short presentation, before MCA convener Trisha Avery moderated a Q&A with the audience.

South Port Urban Responsible Renewal (SPURR) convener Rowan Grove asked the



Left to right: Noel Creece, Bernadene Voss, Trisha Avery, Martin Foley, Meredith Sussex and David Teague and (below) attendants listen to the discussion.

first question of the night, which reflected the current frustrations of many living and working in the precinct.

"There's a lot of emphasis about what it's going to look like in 2050 but what is it going to look like next year? How is the day-to-day planning going to come together for the people around here in the short term?" he asked the panel.

Unsurprisingly, David Teague from VicRoads bore the brunt of many of the questions, addressing a number of issues including traffic modeling for development and changes to traffic controls in the precinct.

While he said VicRoads was constantly undertaking many initiatives to help improve traffic flows and ease congestion in and around the precinct, he said a number of different solutions would be required.

"The modeling considers a future vision of Melbourne, which incorporates all of the planning changes and all of the density that we know about at that time and that's regularly updated and considered on the highest level," he said.

"We need some of those trips into the city to be made through public transport to help out because there is no silver bullet to fix



congestion. It's just not possible in that way."

Dissected by busy Montague St, and surrounded by City Rd and major freeway entrances, the current lack of public transport provision in the area makes it difficult to transition to a pedestrian-focused precinct in the short term.

While Mayor Voss said tram stops for routes 96 and 109 would soon be upgraded, the government's blueprints for Melbourne Metro 2 don't earmark a train to Fishermans Bend for at least 18 years.

In the meantime, Meredith Sussex told the forum that plans for public transport, cycling

and catering for pedestrianism would need to be transformational.

"In the context of the transport and traffic we all know that if 80,000 residents and 40,000 workers live in this area and they all tried to use cars no one would be moving anywhere," he said.

"We know that in the long term. We know that we have to look at how we transition into a different way of doing things and that's really hard."

The desire to narrow streets and remove car parking was also questioned by some, as was the possibility of heightening the Montague St Bridge to improve access to the precinct. However, Martin Foley dismissed this idea.

"I take the view that the bridge acts as a bit of a filter of what can and can't come into this community," he said.

"I would be a little less enthusiastic about changing that area because that then forces in a systems-wide debate, which is what we're having here, to provide a more accurate vision and managing the system from a local perspective."

Other issues raised by participants included parking permits, construction and subsequent safety along Boundary and Gladstone streets, as well as managing construction in harmony with residents, businesses and the future school.

David Teague confirmed some immediate changes would soon come into effect, including installing traffic lights at the intersection of Montague and Buckhurst streets, and opening the Ferrars St and City Rd intersection to two-way traffic.

The City of Port Phillip is currently in discussions with the MCA about devising a neighbourhood agreement between all local stakeholders, while Minister Foley said he hoped the forum could lead to the formation of a local panel.

The *Southbank Local News* and the MCA will host its next community forum in August. A date and forum topic will be announced in the newspaper closer to the event.

JUNE SPECIAL

Rejuvenate your skin over winter

ONLY \$99

INTRACEUTICAL OXYGEN FACIAL, EYE & LIP TREATMENT

Save \$60

Fall in love with your hair

JUST \$99

FULL HEAD COLOUR WITH WASH & BLOW DRY

Save \$101

FRIZZ SOS

\$60

INTENSIVE TREATMENT TO DETOXYFY, REPAIR & PROTECT DAMAGED HAIR

Save \$60

RoopRani

hair & beauty salon

P5 SOUTHGATE COMPLEX - PH 9686 6504 - WWW.ROOPRANI.COM.AU

* T&C's Apply. Offer ends on 30th of June 2017

Enrolments now open!

From page 1.

Expressions of interest for the 2018 school year at Southbank's new vertical primary school on Ferrars St are now open to local families.

Principal Noel Creece has already received more than 120 applications from local families interested in enrolling their children and he said a large proportion had come from the Southbank, South Wharf and CBD catchment zone.

And since his new school was still under construction, he said he was enjoying the chance to go to local kindergartens and families and find out more about his new community.

"This is all being done on the go. There's no office!" he said. "I've got a nominal base in Albert Park College's Bay St campus which I use but, because of the nature of meeting people, professional development and meeting parents, it's very handy to be mobile."

"I basically just say where are you? I'll come close to you because I've got a meeting there. It gives me a good chance to find out more about the area as well as their background. It gives me a bit of a demographical dipstick."

With construction of the new school ramping up, Noel said he had also started the process of interviewing teachers, having already received overwhelming interest for positions.



Southbank's new primary school on Ferrars St is quickly taking shape.

As he learns more about his new local area and meets more families, he said he would be able to find the teachers with the right skills to fulfill a program catered to his future students.

And with the school located in the Montague Precinct of Fishermans Bend, he said parents he had met to date had all been very receptive to the idea of building a new community together.

"The parents are really quite accepting that they're here as pioneers," he said. "I can't sell them a fully matured system but I can say look come along and help us build a community so people are eyes wide open around that."

"They understand that it will take some building. They're very patient and they've got the spirit of the pioneer so it's great."

With the school to cater for 550 children from prep to grade six when it opens next year, Noel said he had received a healthy and diverse expression of interest.

He said that it would remain as expressions of interest only until later this year when the Department of Education officially confirms the enrolment zones for the new school.

However, in the meantime he said he was making himself "super available" to meet with any interested parents and encouraged families to touch base with any questions.

To fill out an enrolment form or to find out more information about the school email Noel on: southmelbourneps@gmail.com



Somewhere, something incredible is waiting to be discovered.

131 Wells St. The Domain 3006
call for an appointment 9077 9883
www.scoogle.com.au


 WATERSLIDE
 Saturday June 10 • 2017


 WORLD
 Gin Day

FREE 2 for 1
 Dodds & Kew Gins' + KEW G&T
 tasting from 6 to 8pm from 4 to 9pm

Shop MR3, Mid-Level East End, Southgate, Southbank, VIC 3006
www.waterslidebar.com.au | info@waterslidebar.com.au
 0425 757 400






Local Justice of the Peace Atilla Akguner can be found at the Boyd Community Hub every Monday.

Cutting local red tape

Did you know that the Boyd Community Hub hosts free Justice of the Peace (JP) sessions every Monday?

Southbank resident Atilla Akguner JP has been volunteering his time for the community since 2014 to host the weekly two-hour sessions inside the Principal's Office at Boyd.

For those who don't know, JPs are volunteers who provide document witnessing and certification services to the community both during and outside business hours.

While they don't provide legal advice, they do not charge for their services.

From 11am until 1pm every Monday, locals can utilise Atilla for a range of services, including:

- Attesting the execution of a document;
- Witnessing an affidavit for use in court;
- Witnessing a statutory declaration;
- Certifying a true copy of an original document; and
- Certifying a person's identity.

Atilla said with police stations and courthouses often inundated and difficult for many people to access during business hours, JPs played an important role in filling

a gap for assisting with what were often very time-consuming services.

He also said that since beginning his weekly sessions at Boyd, the local demand had increased significantly.

"There's been a great response since I started," he said. "As soon as people knew that this service was here more and more started to come."

"The good thing is it's very convenient for local people who live here but also people who work here. We also get response through the website because many people still aren't aware of this beautiful building and its services."

The demand has become so great, in fact, that the team at Boyd is on the hunt for another JP to offer a session on another day. If you know a JP who would be interested in volunteering their time, contact Nadine Ford on **9658 8317**.

To schedule a time with Atilla you can contact him on **0419 584 700** or via email at atillaakguner@gmail.com

www.justice.vic.gov.au

More than just a men's shed

Tucked away in level one of the Federation Square car park is a community of volunteers dedicated to lending a hand.

The Melbourne Men's Shed was founded in 2013 and serves as a "backyard shed" for Southbank and CBD residents who no longer have one of their own to tinker around in.

Despite its name, the men's shed has proud members of all genders and ages. Most are retirees, however chairman Andrew Stefanetti told *Southbank Local News* university students often visited too.

In fact, halfway through the interview, Mr Stefanetti had to take a phone call from a mother wanting to sign up her 15-year-old son as a member.

"Apparently he likes woodwork and cooking, so that's good," said Mr Stefanetti.

Members also go for weekly walks around the city, often while they are waiting for their meals they prepared earlier. Upon return, they sit around the table together and share a meal.

Once a month, the group goes for a longer walk around different areas of Melbourne. Last month they walked from Footscray to Docklands.

Members involved in the woodwork program work on projects of all scales, from fixing furniture that other members drop off to the shed, to bigger projects that help larger organisations.

The Melbourne Men's Shed has previously made wooden toys to donate to the Royal Children's Hospital Foundation.



Chairman Andrew Stefanetti and the jenga blocks built by Men's Shed members.



Instant. Free. Guaranteed.

BOOK NOW

dimmi

Reserve the moment
online restaurant reservations

southgate

Melbourne, your table is ready

Instant online bookings now available!
southgatemelbourne.com.au

Shooter charged

Southbank came to a standstill last month following a shooting on Power St, which took place in the early hours of May 18.

A 27-year-old man and a 26-year-old woman were arrested in relation to the firearms incident in South Yarra on May 25. The man, a Chinese national, was charged by the Melbourne Investigation Unit the following day with possession of amphetamines and firearms and assault-related offences.

The woman, also a Chinese national, was released pending further enquiries.

The incident occurred along Power St near Prima Pearl just after 4am on May 18, when an argument is alleged to have ensued between two men.

Southbank Police Station Commander Snr-Sgt Steve Bills told media on the day of the incident that the two men were believed to have known each other.

"It's not a random shooting. It certainly seems to be a targeting shooting where they've actually known each other in some way. How they've known each other is something for us to discover," he said.

"There has been an argument prior to it and then leading into the four shots being let off at the bloke. The victim hasn't actually come forward as far as we know."

It's believed the two men walked together



Central Southbank was shut off to traffic for hours on the morning of May 18 as police investigated the scene where the shooting took place on Power St.

from Crown Casino to Power St before the incident took place.

According to police, the victim, a 36-year-old Bulleen man, fled the scene at the time of incident but was later treated with non-life threatening injuries in relation to the incident.

Police roped off Power St to traffic between City Rd and Queensbridge St until shortly before 12pm on May 18, causing morning commuters major headaches with city bound traffic diverted up to Queensbridge and Clarendon streets.



The CUB headquarters on Sturt St is the latest Southbank building up for sale.

Site up for sale

Carlton & United Breweries (CUB) is selling its Southbank headquarters on the corner of Southbank Blvd and Sturt St.

A spokesperson for CUB has confirmed that Colliers International has been appointed sole agents to manage the international expressions of interest campaign, with the building reportedly tipped to fetch \$80 million.

Comprising a net lettable area of 14,000 sqm, CUB has occupied the building since it was constructed in 1991. It has since undergone a major refurbishment, which was completed in 2014.

CUB corporate affairs director Julian

Sheezel told *Southbank Local News* that while it was selling the headquarters, CUB would continue to occupy the building as long-term tenants.

"The six-storey building at 77 Southbank Boulevard, in the heart of the Arts Precinct, is to be sold on a sale and long-term leaseback," he said.

"There is strong interest from domestic and offshore investors given the quality of the lease to CUB and long-term secure income."



Yarra River Business Network

NETWORKING LUNCHEONS

FRIDAY, 14 JULY, 12NOON-2.00PM
RIVERS EDGE EVENTS, RIVERSIDE,
WORLD TRADE CENTRE

GUEST SPEAKER:

Q&A with Matthew Jackson,
recently appointed CEO of
Parks Victoria

\$77 Per Head, (GST Inc)
Welcome Drink
2 Course Lunch
With Wine/ Beer Coffee



Online Bookings: <http://yarrariver.melbourne/events/view/886/yarra-river-business-association-winter-luncheon>

Enquiries: **Tim Bracher 0412 502 931**

FESTIVAL OF OFFERS



5TH JUNE - 18TH JUNE

FREE MOCHA
WITH ANY CAKE SLICE

Available for dine in only.

19TH JUNE - 2ND JULY
\$10 WAFFLE
SAVE \$5⁰⁰



3RD JULY - 16TH JULY

40% OFF
LAVA CAKE
NOW \$7²⁰ SAVE \$4⁸⁰



SOUTHGATE RETAIL PRECINCT
GROUND LEVEL

Conditions apply, please ask a team member for details.
Offers only available during the above dates.



CHOCOLATE CAFÉ

Good coffee good conscience

One of the Southbank community's favourite meeting places changed hands last month, with the new House of Cards Espresso moving into the cafe at the Boyd Community Hub.

Previously operated by former owner James Murphy under the name Kere Kere South, owners Guy Neil-Baker, Dan La Rosa and Charlie La Rosa have established House of Cards with the intention of maintaining the Kere Kere legacy while giving it a fresh spin.

As its name would suggest, the popular House of Cards donation system whereby customers use a playing card to nominate a cause to donate towards will remain, as will the traditions of excellent coffee and customer service!

However, as with any new business it's keen to bring about a few of its own changes. One such change it has already implemented is opening on Saturdays; something Guy said had already been received well by locals.

"We're very happy to be here at Boyd and it's a new challenge for us having the relationship with James who left the place in good hands we're excited to take on the new project," he said.

"Saturdays we'll open 7.30am until 1.30pm initially just to see how the trade goes but it's really dictated by the community and if people are coming in we'll stay open later."

Having started with two cafes at LaTrobe University, the business has history with former Kere Kere owner James, having taken



Guy (left) and Giselle (right) from the new House of Cards cafe at the Boyd Community Hub. The cafe donates \$1000 each month to a range of different causes.

over his old cafe at Melbourne University, which also operates under the name House of Cards.

With a similar community ethos centred on generosity and caring, the business was well placed to take over the cafe, which has become a much loved meeting place since Boyd's opening in 2012.

With a strong focus on promoting local artwork, photography and paintings are now

displayed in the cafe, while it has also added a few new menu items and introduced a new fresh blend of locally-roasted coffee.

Guy said the business was looking forward to getting involved in the community and using the space at Boyd Community Hub to engage further with locals.

"Being within the community hub there's space for a lot of that kind of community engagement," he said.

"I think with any business you get into the space to feel what's going to work, what's not going to work and how to bring that community feel to the space is always a challenge but it's something that we're looking forward to."

For more information visit houseofcardsespresso.com

Acclaimed

....again!

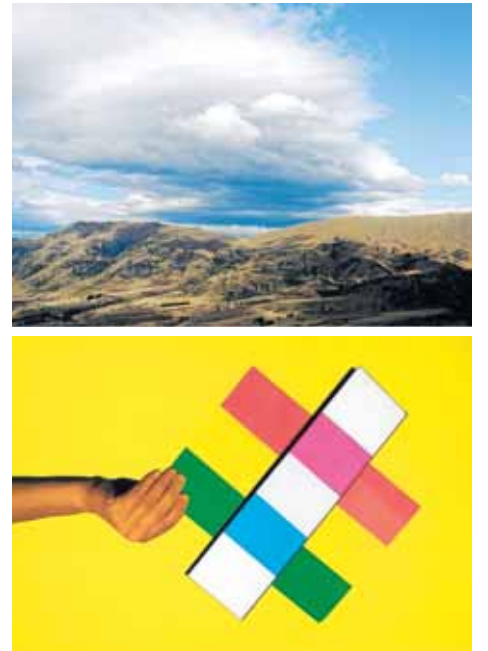
Congratulations to Haileybury students who have topped all schools in the State with a record 15 Premier's VCE Awards.

HAILEYBURY

KEYSBOROUGH BRIGHTON BERWICK CITY BEIJING

www.haileybury.vic.edu.au





(Left) Margaret Lawrence Gallery director Dr David Sequira with one of the blank plywood panels sent to artists and some of the featured artworks by Sadie Chandler (centre), Michel Szczepanski (top right) and Taree McKenzie (bottom right).

A landmark exhibition of inches

The Victorian College of the Arts' (VCA) impact on Australia's visual arts landscape will be put on display this month as part of a local exhibition at the University of Melbourne's Margaret Lawrence Gallery on Dodds St.

Running from June 16 until June 25, the 9x5 NOW exhibition celebrates 150 years of art here in Southbank at the VCA as well as its predecessor institutions – a lineage that began with the establishment of the National Gallery of Victoria Art School in 1867.

The '9x5' title references the original exhibition of impressionist works held at the Buxton Galleries in Melbourne in 1889. That exhibition included works from key Australian impressionist artists such as Tom Roberts, Arthur Streeton, Frederick McCubbin and Charles Conder, who were all graduates of the National Gallery of Victoria Art School.

Back then, those original artworks were painted on the back of cigar box lids, which measured at nine inches by five inches. As a fitting tribute, more than 300 eminent alumni and staff were sent nine by five inch plywood boards in the mail, which were ultimately sent back as artworks.

This has culminated into an exhibition, which will feature the works of more than 300 leading Australian artists in one room. Better yet, all works will be up for sale, with proceeds raised going towards funding a new scholarship for VCA students and recent graduates.

Director of the Margaret Lawrence Gallery Dr David Sequira said the exhibition represented a landmark for visual arts in Australia.

"In 2017 when we're celebrating 150 years of art at the VCA having a show that connects us to that lineage is really important because they're like our great, great grandparents!" he said.

"It's interesting because so much of Melbourne's contemporary art life relies upon artists who create their own exhibitions or set up their own artist run initiatives and you could argue that the 9x5 show was one of

those sorts of projects in the 19th century."

Some of the contributors to have donated artworks for the exhibition include household-alumni artists such as Bill Henson, Patricia Piccinini, Sally Smart and Rich Amor.

And while the exhibition pays homage to the influence and inspiration of the past, it also showcases the diversity of contemporary approaches to visual arts through photography, drawing, text, mixed media and painting.

"If there was ever an exhibition where you could get a glimpse of the visual arts practice in Australia over the last 50 to 60 years this will be it," Dr Sequira said.

"I think it's going to be a lot of fun but I also think that apart from the fun sense of participation and even outwardly demonstrating the impact of the VCA in the rest of Australia and internationally, I think

it will make very real the importance of the VCA in the broader cultural landscape."

The exhibition also celebrates an important sense of reunion for the artists, many of whom forged their creative talents here in Southbank and exhibition curator and contributing artist Elizabeth Gower described the response from artists as "overwhelmingly enthusiastic".

"It's both a privilege and a challenge to curate this significant exhibition," she said. "Some artists have stretched the criteria and made works about the board itself, casting, cutting, manipulating and extending it three-dimensionally. It will be a milestone exhibition."

The exhibition program also includes artist talks, tours and a one-day symposium.

For more information visit events.unimelb.edu.au/events/8223-art150-9x5-now-exhibition

9X5 NOW

An exhibition of works by 350 alumni artists from the Victorian College of the Arts

16–25 June 2017
Open daily 12.00-5.00pm

Margaret Lawrence Gallery, Southbank Victoria



art150.unimelb.edu.au

Darren Sylvester, Adidas Hikers 2017 (detail), lightjet print, courtesy Neon Parc, Melbourne



THE ARTS PRECINCT



Taking audiences to another space

By William Arnott

The Testing Grounds is set to transition into another world this month as the Centre for Projection Art presents the aptly titled "Another Space".

Highlighting seven contemporary artists from both Melbourne and the United States, *Another Space* explores digital culture with digital media.

Another Space focuses in particular on the space in between the physical and the virtual, and what this dependence on the Internet means for society.

To access this "in between" space, the artists embrace contemporary culture and use technology to create experiences.

Curator Yandell Walton said *Another Space* had been something she had been thinking about for a long time.

"Each artist has blown me away with their work, both here and in the US," she said. "All of them have stepped out of the normal screen-based format."

Technology plays a large part in *Another Space*, helping the viewer see the world through a different lens each time.

There are a mix of large-scale projections and screen-based works that range in their immersiveness from virtual reality to screen savers on an old Macintosh.

"One artists is using a gaming platform to generate the art each time," said Walton.

Three of the works are viewable every night as public artwork, and some are even viewable from outside the site.

"We're having a closing night ceremony on June 30," said Walton. "It's a fantastic opportunity to get out and about in the beginnings of winter."

For more information about the *Another Space* exhibition, visit www.testing-grounds.com.au

Macbeth from MTC

The Melbourne Theatre Company has brought Shakespeare's Scottish-based play back to Melbourne with a star-studded cast.

Jai Courtney (*Suicide Squad*) will play the role of Macbeth in Simon Phillips' upcoming production of the classic tragedy.

Geraldine Hakewill (*Wanted*) takes on the role of Lady Macbeth, the mastermind and tortured character behind the couple's political fortunes.

"I'm so delighted to be returning to the



company with a Shakespeare – my greatest theatrical passion," said Phillips.

"This is probably his most visceral play – it operates on the head and the heart in equal measure, inviting the audience into the

irrational world of its anti-hero."

The story of Macbeth follows that titular character who finds himself in the middle of a prophecy that leads to greatness, but also towards isolation and madness.

"Macbeth and Lady Macbeth's relationship is so superbly elucidated and conceived, and the gender politics that go on are totally contemporary," said Phillips.

"I'm particularly excited to work with Jai and Geraldine – and indeed all these terrific actors – to bring these seminal roles to life."

"The results will hopefully be compelling, chilling and spasmodically heart-rending."

Macbeth opens on Friday, June 9 at the Southbank Theatre.



Singer Petra Haden and Bill Frisell perform on June 2.

Frisell lights up Jazz Festival

By Sean Car

Legendary American jazz guitarist and composer Bill Frisell and his band got the 2017 Melbourne International Jazz Festival underway in magical fashion on June 2.

Performing his Grammy-nominated project *When You Wish Upon A Star* at Southbank's Melbourne Recital Centre alongside his all-star band featuring Petra Haden (vocals), Thomas Morgan (bass) and Rudy Roysten (drums), Bill's delicate and innovative arrangements left the audience mesmerised.

Combined with the unbelievable vocal range of Petra, who has performed with the likes of Beck and Foo Fighters, Bill's unique jazz arrangements of classic American cinema music made for a stunning mix. The audience response was so positive, the band returned for an encore...twice!

The Melbourne International Jazz Festival continues until June 11. To see what else is on offer visit www.melbournejazz.com

The songs of Annie Lennox

By Nadia Dimattina

Acclaimed cabaret performer Michael Griffiths will be paying tribute to singer, songwriter Annie Lennox in his upcoming one-man show "Sweet Dreams".

Michael Griffiths is Annie Lennox as he will be performing her unforgettable songs including *Why*, *Walking on Broken Glass*, *There Must be an Angel* and *Thorn in my Side* at The Salon at Melbourne Recital Centre.

Griffiths won the prestigious Best Cabaret Award Adelaide Fringe 2014 and was nominated for a Green Room Award (Best Musical Direction) in 2014.

A review from *The Age* included the following praise: "Griffiths is extraordinary".

The one-man cabaret is written and directed by Helpmann Award-winner Dean Bryant.

This one-hour performance of cabaret will play with your heart as the audience listens to Annie's bittersweet lyrics, which share



stories of her triumphs and her heartbreak.

There will be two performances on June 30 and July 1 at 7pm, with concession tickets at

\$29 and adult tickets for \$39.

For more information and to book tickets, visit www.melbournerecital.com.au



Bach

The Passions of the Soul

Experience the musical genius of J.S. Bach performed by an ensemble of Australia's leading Baroque specialists led by internationally acclaimed violinist Rachael Beesley.

SAT 24 JUNE 7.30pm Use the promo code 'SOUTHBANK' to purchase A reserve tickets at B reserve prices (save \$10).



MELBOURNE
RECITAL
CENTRE

CNR SOUTHBANK BLVD &
STURT ST, SOUTHBANK

TO BOOK: 9699 3333
MELBOURNERECITAL.COM.AU

A transaction fee between \$5.50 and \$8 applies to orders made online and by phone. A delivery fee of up to \$5.50 may also apply.

PRINCIPAL GOVERNMENT PARTNER

CREATIVE VICTORIA





Photography for social media.

The future of photography is in your hands...

By Khiara Elliott

A brand new course at Photography Studies College named Photo Imaging and Photography specialising in Social Media will revolutionise the way photography functions in an ever-changing media world.

Photography has always developed through advances in technology, more so now than ever. "More and more social media platforms are being used for publishing photographic imagery and we are moving away from traditional avenues like magazines and newspapers," said tutor Neil Stanyer.

The Certificate IV course engages with how photographs are now being produced and consumed in response to the changing digital environment.

Photography Studies College has long championed the creative visions of students and believes that it is this that gives them an edge in the industry at large. The course focuses on photography as a language and how photographs provide for a myriad of visual outcomes.

Mr Stanyer believes that effective communication, especially from a social media perspective is becoming increasingly visually based, rather than text-based.

"When you go through social media platforms, it's always the photos that are going to grab your eye," he said. "The course also looks at how to best apply visual strategies for particular social media channels, and how to use them to gain a more recognisable presence."

The course will also cover the important photographic elements such as image design aspects, visual theories, composition, colour and lighting. However, its point of difference lies within the execution of these techniques and how students can apply them for their own expressive intentions.

The need for in-depth and intricate photo editing software on computers or laptops is not necessary for this course, nor will there be a need for high-end DSLR cameras. The course will revolutionise how photographic teaching and practice is traditionally conceived by embracing the potential of mobile cameras and image editing apps.

"We've stepped away from conventional

instruction and formulated the course so that it can be done entirely through hand-held devices," said Mr Stanyer.

"There are apps that allow you to have an incredible amount of control on how your phone functions and takes the photographs. They let you manipulate and style how your photo looks in exactly the same way that desktop software does, so that's where we're coming from with this course." "We aim for our students to produce stimulating and engaging photographic imagery beyond physical constraints."

Mr Stanyer said the course could be broken up into major subheadings: photographic and theoretical aspects and practical, industry applications. The course will explore how these subheadings work within a social media context.

Photo Imaging and Photography specialising in Social Media will be offered from the end of June.

Photography Studies College (Melbourne) is Australia's only tertiary institution specialising exclusively in photography.

A multi award-winning provider acknowledged by the industry for six consecutive years as Australia's best!

NEW INTAKE

**Certificate IV
Photography &
Photo Imaging**

Specialising in Social Media

Starts 19th June

Essential Skills Courses

Creative Capture Short Course
Creative Photography Certificate
Pro Certificate

Starts 26th June, 6-9pm

**Advanced
Diploma of
Photography**

**Bachelor of
Photography**

**ENQUIRE
NOW**



Photography Studies College (Melbourne)

65 City Road, Southbank, VIC 3006

☎ 03 9682 3191 ✉ info@psc.edu.au

RTO Code: 0111



psc.edu.au



9 X 5 NOW EXHIBITION

June 16 - 29 - Victorian College of the Arts

An exhibition of artworks by 350 alumni artists from the VCA and includes works by leading Australian artists Patricia Piccinini, Rick Amor, Peter Booth, Louise Hearman, Bill Henson and many more. The works measuring nine inches by five inches have been donated by the artists and are available for sale to the public, with funds being used to establish the ART150 Scholarship at VCA.

ART150.unimelb.edu.au

CITIES OF ARCHITECTURE: MADRID

June 19 - ACCA

Explore one of the largest urban centres in Europe with Qianyi Lim, Founding Partner and Architect at SIBLING. Qianyi Lim will present a personal selection of architectural and cultural marvels of Madrid.

www.accaonline.org.au



JO DUCK

June 23 - Photography Studies College

Jo duck is an international fashion and advertising photographer. She is inspired by film and is drawn to the unusual. A strong sense of wit pervades her work. Her work has appeared in many international publications and she has shot for clients including Mimco, Jack London and Nike. She will speak as part of PSC's *Image Makers* seminar series.

www.psc.edu.au

CHRIS ROCK

June 27 - Hamer Hall

Grammy and Emmy Award winning comedian, actor, director, writer and producer, Chris Rock, will return to Australia as part of his highly anticipated all-new THE TOTAL BLACKOUT TOUR 2017. This will be an intimate night at Hamer Hall.

www.artscentremelbourne.com.au



SONGS OF THE NIGHT

June 18 - Elisabeth Murdoch Hall

Tenor Andrew Goodwin's career has hit the stratosphere, singing major roles at opera houses across Europe to enormous acclaim. He sings haunting night-themed lieder reimagined in sumptuous new string orchestra arrangements, including Schoenberg's *Waldesnacht* and Schubert's *Der Erlkönig*. Directed by Rebecca Chan.

www.melbournerecital.com.au



MINNIE & LIRAZ

Runs until June 24 - Fairfax Studio

After her success with *Neighbourhood Watch*, playwright Lally Katz returns to MTC with a characteristically oddball story of kindly Jewish grandparents and raw ambition. As riotously funny and brilliantly original as you would expect a brainchild of Lally Katz to be, *Minnie & Liraz* has a misfit charm that will leave you grinning.

www.mtc.com.au

THE SLEEPING BEAUTY

June 16 - June 27 - State Theatre

Opulent splendour, fairytale charm: this reawakened classic will sweep you off your feet. If you liked Peter Wright's *The Nutcracker*, you'll like *The Sleeping Beauty*.

www.australianballet.com.au

JAMS FOR JUNIORS

June 24 - Iwaki Auditorium

The earlier children listen to music, the more it will enhance their lives. This popular series of eight 30-minute workshops is designed for children up to five years and their parents and provides a valuable chance to listen and respond to popular repertoire.

www.mso.com.au



NEW WORLDS

July 2 - Elisabeth Murdoch Hall

Melbourne Youth Orchestra continues its fiftieth birthday celebrations with an exhilarating program of music from new worlds. Melbourne Youth Orchestras has brought Victoria's finest young musicians together since 1967. This concert is supported by the City of Melbourne and the Australia Council for the Arts.

www.melbournerecital.com.au



REVOLT. SHE SAID. REVOLT AGAIN.

June 16 - July 9 - Malthouse Theatre

In a series of equally funny and disturbing events—the everyday is turned upside down, dirty talk is stripped naked, a marriage proposal is interrogated, and nudity is embraced in the dairy aisle—playwright Alice Birch rallies language to revolt upon itself, commanding it to bear arms against the conventions of work, sex, motherhood, aging, and love.

www.malthousetheatre.com.au



BUDDHA'S SMILE

Runs until Oct 17 - NGV International

From the tranquil smile of an enlightened icon to the widely recognisable laughing Buddha, this new exhibition introduces the story of Buddha in its multitude of incarnations.

www.ngv.vic.gov.au



HEART IS A WASTELAND

June 29 - July 16 - Malthouse Theatre

Two of Australia's most revered actors, Ursula Yovich (*Love and Information*) and Aaron Pedersen (*Water Rats, Mystery Road, Goldstone*) come together to portray two achingly beautiful characters in a whiskey-fuelled battle of egos and hidden scars.

www.malthousetheatre.com.au

SOUNDPROOF YOUR EXISTING WINDOWS & DOORS

IF YOUR EXPERIENCING CONSTRUCTION, TRAFFIC & CITY NOISE WE HAVE THE SOLUTION FOR YOU.



No need to replace your windows or doors.

We will install our Secondary Glazed window to your existing Windows and Doors.

Half the price of replacement Double Glazing.

Up to 70% Noise Reduction can be achieved.

Reduce heat loss by 50%

Over 22 years in Business.

Free No Obligation On Site Quotations.



Stop Noise
ADD ON DOUBLE GLAZING

Watch Our before & After Video Demonstration www.stopnoise.com.au

Call us anytime on **1800 880 844**

Office & Showroom – 15 Industry Blvd, Carrum Downs.

St Kilda Rd Metro Tunnel disruption

Works on Southbank's new local underground train station at the Domain Interchange will ramp up this month as part of the government's \$11 billion Metro Tunnel Project.

Southbank residents can expect ongoing delays for many years while the new station is built, with the project set to drastically change traffic flows along St Kilda Rd.

Minister for Roads Luke Donnellan announced the start of major work on the new Toorak Rd West tram route on May 21, which will be used by route 58 trams. This work will close lanes on and around St Kilda Rd over the next few months.

St Kilda Rd was reduced to two lanes in each direction between Domain Rd and Toorak Rd over the first weekend of June and this will continue over the Queen's Birthday long weekend and during the last week of June.

It will then be reduced to one lane each way for 11 days from July 1, with buses replacing trams to ensure passengers can still get to where they need to go.

There will also be impacts on Toorak Rd, with the eastbound lane is closed between St Kilda Rd and Park St for more than two

weeks from June 13, before this section completely closes over the weekend of July 1-2.

During the school holidays, one eastbound lane will reopen but the westbound lane will remain closed while the new tracks and two stops are being built.

Both lanes will reopen on July 12 when Domain Rd closes for many years to build the new underground station at Domain.

Early next year, the section of St Kilda Rd between Bowen Crescent and Toorak Rd will reduce to one lane in each direction and will stay that way for many years.

The new station will provide direct access to the Shrine of Remembrance, Royal Botanic Gardens, the St Kilda Rd employment precinct and Southbank.

"We're getting on with the Metro Tunnel to run more trains, more often right across Melbourne," Minister Donnellan said. "This will have impacts on St Kilda Rd and I thank motorists and passengers for their patience."



Boyd's Sustainability Group is inviting interested locals to get involved in its regular meet ups.

Like living sustainably?

The team at the Boyd Community Hub is calling on interested locals to join its regular Sustainability Group meet ups.

The first meet up will take place at Boyd from 10am to 1pm on Saturday, June 10 and will include a free light lunch.

Locals are invited to help out by sustaining Boyd's community planter boxes, labeling herbs and plants, discussing food waste

ideas and deciding on workshops and activities for the remainder of 2017.

If you're interested in getting involved contact Boyd's community animator Nadine Ford on nadine.ford@melbourne.vic.gov.au

ADVERTISEMENT

Home to **25%** of Australians, and **37%** of Australia's population growth, Victoria's share of **Federal Infrastructure Funding** after this budget is now only **8%***. So yes, we do ...



* Updated based on the 2017/18 Australian Federal Budget (and down from 9%)
 Authorised by M Danby 117 Fitzroy Street St KILDA WEST



Michael Danby MP
 FEDERAL MEMBER FOR MELBOURNE PORTS
www.danbypm.com

The intriguing mystery of the errant Hoop Pine

My favourite season, autumn, is now behind us and winter has kicked in right on cue.

While walking around our streets, admiring the falling autumn leaves of the deciduous trees in Southbank, I passed a newly-planted tree that stood out – not because it was young and new, but because it was evergreen and a pine.

This pine is establishing its home on a small grassy verge at the front of 20 Kavanagh St and it has clearly been planted by the City of Melbourne. It just doesn't look right. Have you seen it?

I have since done a little research on this tree and have learned it is a Hoop Pine or *Araucaria Cunninghamii*. Hoop Pines were a common fixture through Melbourne's parks and gardens in the late 1800s.

There is still a beautiful specimen in the botanic gardens, which is 33 metres tall and 4.3 metres wide. Hoop Pine is a native conifer and could grow to up to 40 metres tall over 450 years. The more I learned about this tree, the more questions it raised.

It has been planted just over a metre from the footpath edge on a patch of lawn which I consider to be in shade for nearly 80 per cent of the day, which seems to be counterproductive to its suitability.

If this tree is to grow to its full height, then it won't take long for the its trunk and branches to penetrate the footpath.

I thought maybe this tree is only expected to have a street life of a few decades under a council ecology plan, so I turned to the City of Melbourne's Southbank Urban Forest Plan 2015-2025 expecting to find an answer.

Unfortunately, I could find no mention of Hoop Pines for Southbank in this plan. However, I could find mention of Hoop Pines in the Central City Urban Forest Plan. In this plan Hoop Pines are considered for park edges and reserves. This location is neither.

More interestingly though, is that the Southbank Plan says there are limited opportunities for planting on nature strips or centre medians. It does recommend species that are going to provide maximum canopy and shade potential. I am not sure that a Hoop Pine would achieve this in that location. However, the Plan identifies that "Kerb outstands should be considered as opportunities to plant species drawn from a wider palette that are unique to that location or intersection and provide visual interest."

I would be prepared to accept this species is certainly unique to the location and provides visual interest. After all, it certainly grabbed my attention.

There is a proposed species palate within the Plan and Hoop Pine is not one of the suggested species. I wonder if this



The tree in question.

is a species that the City of Melbourne is planning on introducing throughout Southbank or if it is just a one-off planting.

Personally, as this species matures I feel it would be impractical and ugly on the Southbank streetscape.

I might ask the city's chief arborist for clarification so the Southbank community can be better informed, but I'd also be

interested in the opinions of others too.

On another note, our organisation's Annual General Meeting will be held in the coming months. We'll be on the hunt again looking for enthusiastic residents to join our committee.

You don't need a tonne of skills, just enthusiasm and an interest in Southbank. We'll have a variety of roles available and plenty of opportunities to contribute.

Volunteering in your community is a very rewarding experience and a quality that potential recruiters often look for.

If you are remotely interested please drop us a line (info@southbankresidents.org.au) and we will be in touch to answer any and all questions you might have about what's involved. We already have one interested member, so you won't be the only one.



Tony Penna

Tony Penna is the president of Southbank Residents' Association.

southbankresidents.com.au



Federal Politics

Turnbull cuts to Catholic education

"... now Education Minister Simon Birmingham, sounding like an Australian Teachers Federation official from the early 1970s, is aligned with the green-left activists of *The Age* to demomise the Catholic education authorities. Oyvey!" columnist Greg Sheridan wrote in *The Australian* on May 25.

The 2017 Budget from the Turnbull LNP government included a prospective \$22 billion cut to education. Labor says the original recommendations of businessman David Gonski for needs-based funding should be implemented.

What has surprised me to most in these cuts is the unexpected attack of Minister Birmingham and the Turnbull government on Catholic Education. This attack has continued in *The Age* newspaper. Several articles and editorials with misleading information on the impact this will have on Catholic schools and the quality of education they can offer in the future.



Speaking with parents at St Columba School in Elwood.

On Tuesday, May 2 I spoke out against cuts to Catholic Education in parliament:

"I was speaking to the Catholic Education Office in Victoria today. They pointed out to me that 210,000 students from 140,000 families attend one of the 500 Catholic schools in Victoria state wide. That is one in four Victorian children. Catholic schools pride themselves on the quality of the education they provide and they refer to their values based education. It is a distinction that many parents look for when they select a Catholic school."

"There are five Catholic Primary schools in my electorate, St Aloysius in Caulfield, Galilee Regional in South Melbourne, St Columba's in Elwood, St Mary's in East

St Kilda, St Josephs in Elsternwick and Christian Brother high school in East St Kilda. These cuts to their funding will affect the quality and availability of education to the Catholic parents in these five suburbs of Melbourne Ports."

"Indeed, the infamous claims in *The Age* that these worthy, but by no means wealthy Catholic schools are making 'windfalls' are nonsense. What Birmingham and his megaphone at *The Age* do is project a number, based on the postcode of the school, that the federal education minister has given to his Green allies without any understanding of the local circumstances that govern these schools, such as large families, disproportionate number of health care cards, refugee families, etc."

Many reading this will have children attending one of these local Catholic schools. It is my view that the values you have chosen to instil in your children through their education process should not see you targeted financially by the government while it gives banks and big businesses tax cuts.

As I also pointed out in my speech: "A decrease in funding will result in these schools cutting programs from their curriculum and reducing class sizes. A representative of the Catholic Education Office in Melbourne told my office just

today that schools in the local parish will be forced to lift fees by \$5000 a year over the coming decade. That is over \$100 a week under Malcolm Turnbull's and Simon Birmingham's plan. Catholic constituents in my electorate simply cannot afford this increase in school fees. Many of the families have several children attending school."

In the bad old days of the 50s and 60s when anti Catholic sectarianism was rife, one might have expected this campaign. Haven't we moved past these attitudes?

Catholics are an important part of the Melbourne Ports fabric, and Catholic education forms a vital community role.

Like all schools in this electorate, I've attended all of these wonderful warm Catholic primary schools and I will not see them unfairly treated.

Tanya Plibersek and Bill Shorten have made clear Labor want the relatively inexpensive funding for all the Catholic system to be supported. Let's not go back to the bad old days of sectarianism.



Michael Danby

Federal Member for Melbourne Ports

michael.danby.mp@aph.gov.au

St Johns Southgate

Robo-God?

There was a time when I thought that there was no wrong way to share the love of God with someone. But I'm becoming more and more convinced that however it's done, a person – a real, living and breathing person who can be looked in the eye – has to be the one doing the sharing.

From time to time I'll lurk in the swamps of social media where discussions of spirituality and religion take place. In these forums the discourse almost always descends into self-justification, incivility and downright rudeness.

I'm sure most people have the best of intentions when they post a reply, comment or tweet to someone's innocent question. But there seems to be a collectively ill-conceived notion that if interactions are just keystrokes on a qwerty or thumb taps on a touch-screen that the communication is merely intellectual, not personal. But that's not the case.

We live in the age of "likes", "scores", "up-votes" and "re-tweets" which transforms even the most banal brainwaves into commodities. The so-called social media is more like a social trading arena where esteem and degradation are bought and sold and thrown around with smiley faces and piles of poo. Anyone who's been on the receiving end of a nasty comment knows that shaking it off is easier said than done and can lead to obsession and self-loathing.

Sadly, this new market place of ideas is depersonalised and lacks the nuance that body language and eye contact bring, so it's no wonder that the exchange of ideas often ends in ALL CAPS shouting matches. But even worse, one might argue, is how users then retreat to the echo chamber where they'll not be challenged, only be affirmed and sadly stagnate in festering ignorance.

There are limits to what technology can do for us, and when it comes to the spiritual ponderings of life, technology is very limited indeed. Without human-to-human interaction, finding a spiritual connection is virtually impossible. In fact, in the Christian tradition it's taught that God himself became a human being precisely because he sought

a face-to-face love-connection with the people of the world.

A church in Germany recently installed a robotic pastor called BlessU-2. It's fully equipped with a touch screen on which you can request the particular blessing you require (in any of five different languages) and instantly it will speak upon you the blessing you think you need. BlessU-2 is sparking a bit of interest and getting a few laughs, but in my opinion, it's a sad but inevitable result of our techno-social demise.

Confessing your sins on a website or being blessed by a robot will never be an effective substitute for having another person look into your eyes and tell you that you are worthy, you are loved, and you are created in the image of God.

God's not a robot, but a person just like you, and he will never let the trolls get you down. He might know your confusion and the contradictions between your words and deeds but he will never block you or unfriend you.

Jesus won't even "like" you. Jesus only knows love – and he offers it face to face. Come to St Johns and find out how.



Tom Hoffmann
Tom Hoffmann is the pastor at St Johns Southgate Church.
www.stjohnssouthgate.com.au



Montague Community Alliance

We need action...

Thank you to everyone who came along to our first Montague Community Forum. It was heartening to see a big turnout with such dynamic discussion.

As one of the residents said: "It is a great opportunity to engage directly with policy makers and our elected representatives in matters that affect us day to day."

We were grateful that Minister Martin Foley, Mayor Bernadene Voss, Ministerial Advisory Council chair Meredith Sussex, principal of South Melbourne Primary Noel Creece and David Teague from VicRoads joined the panel.

And we also thank the Golden Fleece Hotel for the room and of course *Southbank Local News* for partnering the Montague Community Alliance in putting on the first of these forums.

So ... you would have noticed that our Montague Bridge has been hit twice in this week alone, which yet again brought traffic to a standstill. This meant all the smaller streets were jam-packed, so lucky we talked about traffic management in Montague eh?

It seems that there was general acknowledgement by all the panelist that there are real problems with the current situation in Montague.

And until the final Framework Plan for Fishermans Bend is confirmed and published later this year, there was a consensus that we needed to focus on the current situation and challenges in which we find ourselves. What this means we have still to see. I hope co-ordinated action will be taken very soon.

To reiterate, the issues we discussed were:

- The impact on available parking for current residents and businesses with the huge influx of tradespeople and contractors working on building sites;
- The exponential increase of workers as Montague attracts more and more small and creative businesses and visitors to those businesses;
- Businesses attracting customers that are driving to meetings and require parking;

- Additional traffic adding to the significant congestion in the small streets, such as Gladstone St and Boundary St. That includes large trucks and other vehicles needing to access the building sites; and

- The huge and ever-increasing traffic that flows along the arterials of City Rd, Montague St and Normanby Rd – all of which either intersect or surround the Montague Precinct.

We have heard nothing yet from our panelists, but the good news is that we have brought these overlooked issues into focus with stakeholders who can influence outcomes.

There was a clear understanding that attention needed to be paid NOW on how residents, businesses and communities both in, and on the interface with, the precinct are being currently affected.

We again remind the influencers that this precinct is a busy 24/7 area. It is vibrant, dynamic and full of people and traffic. And even though the Minister for Planning's new Framework Plan may assist with some of our challenges in the future, we need this help now.


Development is here to stay, 40-storey buildings are in the pipeline sooner than we think, literally on our doorstep.

Port Melbourne and South Melbourne residential zones about these developments. For all our health, safety and amenity let's get some transitional plans in place.

The community is waiting. We need action now ...




Trisha Avery
Trisha Avery is the convener of the Montague Community Alliance.
trishavery@bpca.com.au

Welcome to St Johns Church Southgate
A place for worship, prayer and community located on the upper level of Southgate

Every Sunday
9am Traditional worship with communion
10:30am Sunday School (during school terms)
11am Informal worship with communion
6pm Sunday Night at St Johns
Informal contemporary worship hosted by Lutheran Students and Friends

The chapel is open daily for private prayer and reflection



20 City Road Southbank Telephone 9682 4995 www.stjohnssouthgate.com.au

Letters to the Editor

So depressed

Seldom have I been so depressed after reading a newspaper. The content of SLN Issue 63, May 2017 actually made me feel ill! What is our planning authority thinking? Melbourne's lovely historic Tea House, originally built in 1887, is to be consumed by 145m tower. As president of the Southbank Residents Association, Tony Penna, remarked: "The Tea House is destined to be lost in a sea of concrete".

Planning approval has also been granted for a 70-storey tower at 51-65 Clarke St. A 20-storey building at 83-89 Coventry St might sound reasonable, but it's on the boundary of a special character zone, with 40m the discretionary height. Was discretion used? It seems not!

Of most concern to me personally is the planning application for a 48-storey tower at 52-62 Clarendon St. Currently Coates Hire Service occupies 52-54 Clarendon St, next to a bluestone laneway that separates it from Europcar. Does this mean the laneway is to be absorbed into the development? Surely this is totally unacceptable.

It will be a disaster for people living in nearby residential buildings. Residents of Tiara - which will find itself behind the new complex - will lose most of their sunlight and a great deal of privacy. In my own building, the Vue Grande, residents facing south will also be too close for comfort. I might add there is already a building under construction at 64 to 68 Clarendon St, and the proposed development will be cheek-

by-jowl with this 32-storey building. Add all these buildings to an already crowded area and it's enough to make most local residents feel totally depressed!

Lynne Lumsden

Tea Tower II

Is there anything at all we can do to prevent the proposed Tea Tower? Building anything taller than two storeys at that site that blocks out the iconic tea house is despicable. The city is aiming for increased open space and canopy coverage. Isn't that an ideal site? And protect it as such under a section 173A.

Alternatively, or as well, the site should be an effective taxi rank for the casino to fix congestion and conflict between taxis, trams, other vehicles and of course pedestrians. This intersection is a waiting time bomb for a serious accident/incident. Taxis are crossing on red signals. Trams are blocked causing further delays. Other vehicles are not getting through the intersection due to inconsiderate taxi drivers.

Council really needs to assess what's best for Melburnians. I presume if it objects, the proposal will get through at VCAT. Happy to join a campaign against the Tea Tower proposal with the aim of achieving one of the above mentioned alternatives for the site.

Peter Gibbs



Send your letters to news@southbanklocalnews.com.au

We Live Here

Southbank residents dealt a joker

A proposal by casino operator Crown to build Australia's tallest building, Queensbridge Towers is set to bypass all normal planning processes and Southbank residents and owners are outraged.

The government has declared this a "project of state significance," allowing it to push through an approval (C310) without the usual scrutiny.

The new complex will result in a floor area ratio of 57:1, more than four times that allowed in New York City (12:1) or Singapore (14:1), and three times greater than the government's own Planning Scheme regulation for Melbourne (18:1) introduced in 2016.

This development will have a major impact on the City of Melbourne, including:

- Shadowing of the Shrine of Remembrance;
- Significantly increasing traffic volumes in streets south of the Yarra;
- The likely creation of wind tunnel effects; and
- Overcrowding for residents and businesses in surrounding buildings.

For five years residents have openly supported development of the site as being in the public interest provided it was respectful of the Melbourne Planning Scheme statutes, especially regarding separation between towers to protect privacy and to afford access to daylight and sunlight to all residents.

These concerns seem to have largely fallen on deaf ears. Indeed, in approving this application the Minister for Planning has disregarded his own recently introduced Planning Scheme Amendment (C270) and the significant misgivings of statutory referral authorities to an earlier proposal, which have been sidestepped in this latest process.

We Live Here says: "The blatant circumvention and corruption of the planning process has been a cynical exercise. It shows a complete arrogance by the government to openness and transparency."

"It is an example of kowtowing to the big end of town at its worst. It is outrageous that legitimate concerns by a wide range of state and local government authorities can be ignored."

"We are angered that a hotel and apartment complex can be classed as being of 'state significance' - what is so significant about this apartment tower over any other apartment tower that has followed the due planning process, apart from its sheer size?"

The value of the uplift allowed by the new amendment (C310), and as calculated under the C270 amendment,

is estimated to be \$125 million. Yet the value of the contribution to the Public Realm Improvement Plan is \$65 million - a whopping \$60 million "free kick" for the developer and a corresponding loss to the public coffers.

"This is a reckless and scandalous concession which must be exposed for what it is, a sweetheart deal, unprecedented in its scale," say the residents. This application must be brought back under the umbrella of the planning process - and it can be.

The Legislative Council has the non-government numbers in the chamber to reject the amendment and thus compel the government to send the application to a planning tribunal.

It will not signify the end of the development, but ensure the processes in place for checks and balances are observed in a transparent manner and that the referral authorities such as VicRoads, City of Melbourne, PTV and others are consulted and their opinions sought on the serious implications that this proposal will have on the immediate area.

This will lead to a planning outcome that delivers a sensible win to the residents, government and developer alike - by simply following and adhering to the guidelines that the government has set itself.

We Live Here urges you to support Southbank residents by contacting your local MP to block this ill-conceived amendment.

You can also voice your concerns by signing the Southbank residents' petition which can be accessed at www.change.org

The petition calls for the government and opposition to ensure this proposal goes through the proper planning process.

Update on the Parliamentary Inquiry

The public hearings for the Owners Corporation Amendment (Short-stay Accommodation) Bill 2016 inquiry concluded on April 13 and the parliamentary committee was due to deliver its report to parliament on May 11.

However by a resolution of the house the reporting date has been extended to June 8. A full report will be included in next month's column. For further information go to www.parliament.vic.gov.au/epc/inquiry/446

We welcome your feed-back, your contributions to this column, and your donations.



www.welivehere.net
emails to campaign@welivehere.net

THE MOST EXCLUSIVE ESCORT AGENCY

Paramour

OF COLLINS STREET

- Dinner Companions
- Social Escorts
- Sensual Ladies

CITY CENTRE
Melbourne's exclusive
entertainment service.
Highly recommended
for our interstate and
overseas visitors.

9654 6011

See real pictures of our ladies at paramour.com.au

CBD - 5 MINUTES
TO YOUR DOOR

有很有很美丽的小姐!
请看网址。

たくさんの美しい女性
日本語を話します

Call or book at rsvp@paramour.com.au
MELBOURNE CBD

SKYPAD Living

The vertical war on food waste

The month of May played host to International Compost Awareness Week – and if we lived in San Francisco, this would mean a great deal more to us as vertical dwellers.

According to Dr Vivienne Waller from the Centre for Urban Transition, Swinburne University, this is because: “In San Francisco, two thirds of the residents live in apartment buildings and it is illegal for anyone to put food waste into a rubbish bin.”

This means that every San Francisco apartment building must have space for the storage of food scraps and for their collection for off-site composting.

While not (yet) illegal here, there is growing interest in how we as vertical dwellers can deal with our ever growing food waste.

The accepted sustainability mantra is to first reduce, then reuse, and lastly, recycle.

As regards initially reducing our food waste, there are a few technology-based options emerging, such as smart fridges which prompt us to use our food before it expires.

But for those of us who do not wish to be nagged by our appliances, there is a raft of apps that can help us be more creative when utilising what we have in our fridges. These include the likes of Mealtime or Supercook where you enter what ingredients you have and are provided with suggested recipes.

Taking some liberties with the “reuse” category, the sharing economy offers a few options for those liking a more social way of using their excess. Referred to as “meal sharing,” there are several different models.

Some are based on reciprocity (you cook, then I cook), others ask for a financial contribution towards the cost of the meal and others, such as Neighbour Flavour, are a commercial enterprise, which “enables us to buy home cooking from those around us”.

Finally we return to recycling, turning food

waste into something else. While several businesses have gained publicity from how they are reusing their waste (including Moducware™, a fully compostable tableware designed by RMIT’s Green Innovator, Ruby Chan), currently the main option open to vertical dwellers is composting – turning food scraps into “black gold”.

The good news on this front is that vertical dwellers have the options of in-apartment composting and building-based composting.

Regarding in-apartment composting, last year Whirlpool promoted the launch of its Zera Food Recycler (though concerns were raised about its cost, time to compost and the ongoing need for additives).

Another option is Smart Cara, which appears to address these challenges. So now we just need a personal account from an early, vertical dwelling, adopter (any volunteers?).

The option of building-based composting is growing in popularity and there are different approaches to this.

As noted by Dr Waller, vertical dwellers in Australia can choose to have a commercial composting company collect their food waste or they can choose to compost their food scraps on-site.

This can be done using either worm farms or high-speed, in-vessel composters (which can convert food waste into an immature compost product in as little as 24 hours).

But technology is only part of the approach. To make this initiative work requires end-to-end design. For example, one Melbourne-based apartment building has chosen a high-speed in-vessel composter and placed this in its basement.

In this apartment block, there is a food scrap bucket on each floor for residents to place all of their food scraps, including meat and dairy.

The building manager regularly empties these buckets into the composter and the compost output is collected, composted further and blended for sale.

This approach reflects the culture of the building as it relies on the commitment of residents, their acceptance of



responsibilities and a pragmatic way of using all this “black gold” (we have only so many balcony plants!).

This is why more insight is needed into apartment composting - and fortunately this is a challenge accepted by Swinburne University, which is comparing methods of on-site composting with off-site composting in terms of greenhouse gas reduction, people’s engagement with the process and the quality of the product.

If you would like links to the research or organisations mentioned, please visit and like SkyPad Living on Facebook.



Janette Corcoran
Apartment living expert
<https://www.facebook.com/SkyPadLiving/>

YOUR CITY YOUR NEWS

Connect with us for all the latest news, events, updates and more in the City of Melbourne.

Find out what’s on in the city at melbourne.vic.gov.au/whatson

Sign up to our Melbourne Magazine at magazine.melbourne.vic.gov.au

[f /cityofmelbourne](https://www.facebook.com/cityofmelbourne)
[@cityofmelbourne](https://www.instagram.com/cityofmelbourne)
[@cityofmelbourne](https://www.twitter.com/cityofmelbourne)

[f /thatsmelbourne](https://www.facebook.com/thatsmelbourne)
[@thats.melbourne](https://www.instagram.com/thats.melbourne)
[@thats_melbourne](https://www.twitter.com/thats_melbourne)



Southbanker

Our local Tai aCHlever!

By Sean Car and Eleanor Long

As well as having been a consistent contributor to the Southbank community for many years, local tai chi instructor Prof Sun Han Xiang (Lily) has led a decorated life to date.

Having instructed the Wulong Tai Chi class in Southbank for the past five years, Lily continues to share her passion for the ancient Chinese martial art with the local community.

It's a gift she has been honing since the age of five, when she was first introduced to tai chi by her prep teacher in China. It quickly became a significant part of her life and within a couple of years she was competing and winning medals.

"I started with basic exercises and then moved to the wushu martial arts and that included foundation training for all the different forms at a very young age," she said. "In the local cities competition I got my first gold medal there when I was eight years old."

However, Lily's athletic abilities have also encompassed other skills. At the age of eight, she was selected to train professionally in a prestigious diving school where she completed a rigorous daily training regime.

While the possibility of national competitions lay ahead, a bruising encounter in the diving pool led Lily and her mother to reconsider her future.

As the Cultural Revolution came to an end in China in 1976 a more open educational environment became possible. With her exceptional talent in tai chi, Lily was chosen to join a national wushu-training program. Wushu is the general term for Chinese



martial arts, with tai chi being one form.

She soon extended her repertoire to other forms, attaining national championship performances with both sword and spear. At just 14 years of age, she was admitted to the sports department of Wuhan University in Central China, majoring in wushu.

At the age of 20 she became a professional teacher covering a broad range of tai chi skill and health qigong exercises. Since turning professional, she said she had never looked back.

"In 2002, I moved to Melbourne and my English was very bad so I couldn't teach

straight away. I studied English at RMIT University for four years," she said.

"After that I found a job teaching an advanced class at Melbourne University and I have been teaching ever since."

Lily is a personal, living testimony to her advocacy of tai chi and the benefits of its practice. In 2016, she was awarded a Chinese Wushu Association 8th Duan in Wushu (9th Duan being the highest) at competitions in Beijing. She also recently became a grandmother to Oscar, who was born in Melbourne.

Lily is a strong advocate for the health benefits of doing tai chi regularly. She contends that engaging in these gentle exercises can enhance all energy levels, balance, flexibility, muscle strength and sense of wellbeing.

She encouraged locals of any age to come along and sample her Wulong Tai Chi sessions, which take place for one hour at the Boyd Community Hub every Friday morning.

"The ladies that have been coming here to Boyd have come such a long way. Their bodies have changed and they're much fitter than before. You can see just how much better their posture is," she said. Wulong Tai Chi is held at Boyd on Friday mornings at 8am. For more information visit wulongtaichi.com.au

Pet's Corner



A tremendous trio

St Johns Southgate's resident trio of pups Casey, Coco and Ella love life in Southbank.

Residing at the church with St Johns administration officer Lucy and her husband Richard, they are described by their owners as "very friendly" dogs who are well regarded by the community at St Johns.

10-year-old Casey (left) and five-year-old Coco (right) are both kelpies, while five-year-old Ella (centre), a coolie cross schipperke, rounds out the trio. According to their owners, they each complement each other very well.

Coco's sheep dog instinct makes her a bit of a bully at times and she is good at keeping the other two in line. While Ella's cheeky nature makes her an easy target for Coco, Casey, the elder statesman of the trio, always has Ella's back!

The three dogs also love being surrounded by all the constant buzz of activity that life in Southbank provides.

"Two of them are working dogs and Ella has working dog in her. They're intelligent so they need a lot of stimulation mentally and around here there is always people, horse and carts, buskers, skateboarders," Richard said.

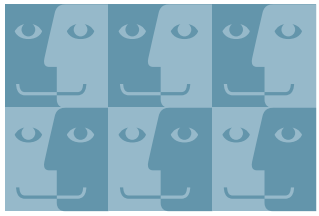
"There's always different stuff to look at so that's what they really like about it."

Another thing all three dogs share in common is that they were each rescued. Coco was rescued from the RSPCA in Warrnambool, Ella from a puppy farm in South Australia and Casey from a farm in Bendigo following the death of his former owner.

Fortunately for the trio, it has wound up in a very loving home here in Southbank and now regularly enjoys walks around the Botanic Gardens and along the Yarra River.

"Casey had never been past the farm gate his whole life so for nine years he'd never been off the property until we brought him to Melbourne a year ago," Richard said.

"They've all adjusted very well. They're pretty well behaved most of the time!"



FACES OF SOUTHBANK



SALLY (AND BOBBY THE DOG)

I'm going to choose a golden oldie: Leonard Cohen, because of the legacy that he has left in terms of his poetry and songs.



TRAVIS

I'm inspired mostly by my father and oddly enough, a number of the people that I work with. A lot of the people I work with aim to be the best at what they aim to do and my father is always someone who is also willing to learn new things, take things apart and live frugally but well.



ELIBEL

My brother. He's like a father, because I'm much younger than him.



LAURA

I think this one woman, she's around 94, her name is Olga. She went through the Holocaust, but she's just the most cheerful person ever. Being able to see everything through such a positive framing, even after going through such a hard thing really inspired me.



FELIX

I would have to say Derren Brown. He's a mentalist, probably one of the greatest of our time and he inspired me to become a performer.



WAYNE

Buddha. Bumbles along in life, doesn't hurt anybody, has a good time, goes and that's about it. I'm not religious by any means, but as a person I reckon he's pretty good.

Question:

Who inspires you and why?

SOUTHBANK SUDOKU

A variation of Sudoku, with the letters SOUTHBANK replacing the numbers.

The rules are the same as regular Sudoku, each line of the must contain the letters 'SOUTHBANK' as must each 9-square box. This Sudoku is VERY HARD!

Good Luck!

Last month's Sudoku solution

| | | | | | | | | |
|---|---|---|---|---|---|---|---|---|
| K | N | A | S | O | U | H | T | B |
| U | T | O | H | B | N | A | K | S |
| B | S | H | T | A | K | N | U | O |
| S | H | U | A | N | B | K | O | T |
| O | K | T | U | H | S | B | A | N |
| N | A | B | O | K | T | U | S | H |
| T | B | N | K | U | O | S | H | A |
| H | U | S | N | T | A | O | B | K |
| A | O | K | B | S | H | T | N | U |

| | | | | | | | | |
|---|---|---|---|---|---|---|---|---|
| | | | N | A | | | | |
| | S | | | | | | | N |
| T | O | | | B | S | | A | |
| | T | H | | | B | | K | |
| | | | | | | | | |
| | U | | S | | | H | B | |
| | N | | H | U | | | T | K |
| B | | | | | | | H | |
| | | | | N | O | | | |

Top Class
of Collins Street

open 24/7 |
sexy & wild |
genuine escorts |

PCA113E

www.topclassofcollinsstreet.com.au

Call 03 9654 6351

History

Military health in Southbank

The former Repatriation Commission clinic on the corner of St Kilda Rd and Coventry St, beautifully placed opposite the Botanic Gardens, has played a remarkable role in the health of war veterans in Victoria.

It was constructed in 1937, one of a number of excellent military facilities designed by Commonwealth Government architect George Hallandahl, who had a long and distinguished career with the Commonwealth Works Department from 1923 to 1966,

The design of the striking clinic, which replaced a galvanised iron building, can be termed as stripped classical and it is flanked by some stunning gates in geometric Art Deco style. Its understated manganese brown brick finish and decorative and cubic and geometric shapes above the entrance doors provided a contrast in architectural styling to the adjoining massive bluestone buildings of Victoria Barracks.

The interior featured the latest in styling and materials, such as terrazzo, jarrah floors and decorative mouldings, as well as a canteen in the basement.

The clinic, a rare example of a purpose-built outpatient health facility, was important for the rehabilitation of veterans and provided



a wide range of services to support injured soldiers with recovery and reintegration into civilian life.

The spacious and warmed waiting hall was a great boon to the patients, and improved

conditions for medical and other staff was greatly appreciated.

The 1940s extension along Coventry St demonstrated the increased demand for such services as direct result of World War II.

However the former clinic eventually became redundant. The Commonwealth vacated the building more than 20 years ago (there are still 1995 calendars on the walls!) and has now decided it is surplus to requirements.

Remarkably the interiors, whilst suffering some degradation, are in reasonably good condition.

Now it is ready for the next phase of its service to the community.

Following a three-year campaign led by a group of military veterans from the Australian National Veterans Museum, the building is now in the process of being transferred to the State Government and will serve as an art gallery (with studio spaces) for returned servicemen and women.

Australian veterans have produced some remarkable art work over the years and involvement in producing art works is regarded as a major part of therapy for those returning from war zones. It is hard to think of a better outcome for the former clinic.

It has also been nominated to the Victorian Heritage Register so hopefully it will be protected in the future.



Robin Grow

President - Australian Art Deco and Modernism Society
robingrow@ozemail.com.au

Owners Corporation Law

Breaking up is hard to do

When most of us enter into personal relationships, there is a fairly evenly-distributed balance of power and autonomy, at least to start with.

And when we do enter into these relationships, we expect them to last long-term.

We also realise that when relationships end, there is the potential for this to be cataclysmic unless both parties are very careful and sometimes the ending can overshadow everything that preceded it. In the context of a building's relationship with a professional manager or caretaker, the stakes can often be quite high. Most committees have come to rely upon professional management to undertake the daily operation and administration of their communities.

For some committees, this reliance is reasonable and a balance is struck between the committee members' responsibilities and that of their licensed manager. However, for some communities, the professional manager or caretaker rules the roost and controls all information and accounts.

As such, it is important for committees to become more proactive about how a relationship with a professional advisor might end and what can be done before that happens to insert some clarity into that process. Otherwise, the transition can be difficult and even damaging to the community.

One of the first and most obvious steps a committee can take is to ensure that its management agreement is properly reviewed by a specialist lawyer prior to signing.

If the committee would like the ability to terminate, with or without cause, at any time throughout the term of the contract, then the contract must provide the owners' corporation (OC) with that right.

If the committee would like to have the ability to control the handling of its funds and records, then that must be spelled out as well.

The time to discuss what you want the relationship to be and how its ending should be handled, naturally, is before you sign the agreement.

Equally important, the committee must retain a copy of the executed management contract. Many committees are dismayed to learn that they have not retained possession of a copy of their management agreement,

which can be problematic if problems surface and they must ask the management company to provide that agreement to them. Most large management companies these days provide an impressive range of services which can include all aspects of the financial operations for an OC, in addition to the infrastructure maintenance, insurance procurement, collection of delinquent accounts and interaction with vendors and professionals.

Most large management companies also offer technology which can streamline operations and make them more effective by taking advantage of available technology. However, when it comes to receiving copies of all those digitised records at the end of a relationship, some companies are better than others at achieving a graceful departure and some refuse to deliver the records altogether and assert that those records belong to the management company, not the owners' corporation for whom the records were created.

The Owners Corporation Act in Victoria requires management companies to turn over the OC's records at the end of the relationship, even if a monetary dispute exists.

It might be tempting to use the leverage of those records and the crippling effect

their absence will create for the community and the new manager or company coming on board, but it is in the manager's or management company's best interests to resist that urge.

As with most things in the owners' corporation arena, what goes around comes around and new committees may even bring back the management company which their predecessors ousted - that is, unless a less than gracious departure left a sour impression.

As for the committee's responsibilities in this process, it is analogous to a marriage. A fine-tuned prenuptial agreement can prevent a lot of unnecessary pain down the road. Committees need to ensure that a management company transition does not place the OC's operations in jeopardy. While a perfect management company fit can last for decades and be mutually beneficial for both parties, it is important for committees to at least consider the possible end of the relationship at the time they are entering into each new contract.



Tom Bacon

Tom Bacon is the principal lawyer of Strata Title Lawyers.
Tom@stratatitlelawyers.com.au

Business



What cocktail are you?

Waterslide Bar at Southgate has recently launched a revolutionary new cocktail menu that matches cocktails to a host of identities one might meet at the bar.

The *Inaugural Guide to Bar Patrons* provides a detailed list of 20 cocktails that each possesses ingredients that are individually tailored to their namesakes.

General managers Liam Watt and Dan Green have spent the last five months carefully devising the menu, which caters to all from “The Suit” and “The Social Smoker” to the “The Backpacker” and “The Fitzroy Hipster”.

“They’re the kind of people that we deal with every single day and that most punters don’t understand,” Dan said. “We profile people that come in and go: I bet they’re on a first date, I bet he’s just had a big win at the office or they’re going off to the theatre!”

“None of it is meant to be taken seriously. It’s all a bit of tongue in cheek. The great thing about the menu though is that everyone will know someone in it.”

The list comprises only the best ingredients available to cater to the palates of all of its listed identities.

They include goji berries for “The Hens Night”, Hennessy VSOP for “The Baller”, Laphroaig 10 and Green Chartreuse for “The Bar Nerd” and even vegan ginger beer for “The Vegan”.

With 20 years of bartending experience between them in both Australian and overseas bars, Liam and Dan said the list was a truly unique concept.

However, Liam said that while its drinks were “100 per cent serious”, it had been designed with the key intention of having a laugh with all of its patrons.

“It’s been a lot of fun writing it,” Liam said. “It takes its toll on you as well when you’re testing them but we’re really proud of it! Every drink is really thought out and engineered.”

“We came up with the story first and then we created a drink around that so everything

you’re making has got a constraint around it, which I think is actually an awesome way to do it.”

And while cocktail lists comprising anything beyond classics such as espresso martinis or mojitos can often pose a challenge to many, the menu has even got a flavour map to help patrons find something sweet, weak, strong or sour.

Pulling out all the stops from liquid nitrogen to making foams, Waterslide’s heavily trained bar staff use every culinary technique imaginable to provide a premium quality, yet very approachable cocktail menu.

However, if cocktails aren’t your thing, Waterslide has something for everyone. It also offers a wonderful selection of wines, beers and spirits as well as an impressive selection of 120 single malt whiskeys.

Located on what was formerly the site of Wirth’s Circus, the venue literally was once home to a waterslide! It pays homage to its past with a series of historic photographs showing how Southbank once was.

Now open until 1am from Tuesdays through to Saturdays, the venue provides an ideal location on the river for a local, post-work or celebratory drink. And just quietly, it’s two cocktails for the price of one on Tuesdays!

“We’ve got such a local following now it’s because we are ourselves and we chat to a lot of people and that’s what we think we actually do best,” Liam said.

“I think this cocktail list for us is really a way to bridge that gap of when they pick it up and actually read it from start to finish and have a bit of a laugh.”

Waterslide is located at mid-level Southgate next door to La Camera. For more information visit waterslidebar.com.au

Southbank-based businesses wishing to be profiled in this section should email: advertising@southbanklocalnews.com.au

Health & Wellbeing



Body awareness, lower back pain and goal setting

Poor body awareness

Nearly every new client I see and take through a health, fitness, posture and body composition assessment has very little understanding on some simple things that they can do to move more freely, feel better, reduce pain and poor mobility and to generally improve their posture.

It is all too common to allow our daily grind to dictate the way we sit, sleep, walk and move. It is very rewarding as a personal trainer that has a focus to get the very best out of people that by education, we can really empower people to make some amazing and remarkable physical changes through even just a few simple movements.

It is my feeling that too many people rely on physiotherapists, chiropractors, osteopaths and masseurs to try and realign, reset, have an adjustment or to relieve pain and discomfort.

Often this is a band-aid solution to what can be replaced with a suitable stretching and strengthening program that is specifically designed around your posture, issues and conditions and allows you to prevent aches, pains and poor mobility.

Do you have good body awareness? If not, perhaps you should try seeing a qualified personal trainer or exercise physiologist just for one session?

Lower back pain

Back pain is very common as most of us would know. In fact, 80 per cent of Australians experience back pain in some form at some point in their lives. So, what can you do about it?

One of the things that happened back in the 80s was when they used Merv Hughes in some TV commercials to promote back extension and it was a great move!

We often spend so much time sitting and often that results in a rounded-out “C” shape in our lumbar spine. Our spine becomes very used to that position and our surrounding joints, muscles, ligaments, tendons and discs in our spine become very stiff, rigid and very immobile.

One simple thing that we can do to keep our lower back supple and allow it to move more freely and make sudden sharp movements without causing us pain is to simply stand up periodically throughout the day and lean backwards from the hips and extend our backs.

Alternatively, we can lie face down on the floor and lift up our body from the hips and use our arms to allow for some controlled back extension. Do it, your back will thank you for it!

Specific goal setting when in the gym

As someone that spends my life trying to make the most effective and sustainable gym and fitness regimes for people on a daily basis, I am amazed at the many people that are simply not getting the most out of their fitness regimes.

I frequent many amazing Southbank and Docklands apartment gyms and, in my time, have seen so many people wasting their time when they could be either doing something else entirely (away from the gym) or maximising the time that they are in the gym.

Setting specific goals and then having a schedule or routine to follow is paramount to getting what it is you need and/or want when working out and should be focused around the goals that you want to achieve.

Why spend one hour cutting down a tree with a hand-saw when a chainsaw could do it in two minutes? Be smart with your time, set specific goals and focus on attaining them.

Then get out enjoy the rest of your time with friends and family and enjoy all that Southbank has to offer!

For a more information, exercise guidance or if you have any questions feel free to contact me anytime - www.justintimept.com



Justin Moran

Justin Moran is the Owner of Just In Time Personal Training.
www.justintimept.com

2017 WHAT'S ON COMMUNITY CALENDAR

JAN | FEB | MAR | APR | MAY | **JUN** | JUL | AUG | SEP | OCT | NOV | DEC |



INNER MELBOURNE LIFE ACTIVITIES CLUB

Meeting on selected dates and various locations, IMLAC takes in the city's parks, its culture, fabulous eating options as well as festivals, galleries and concerts.

www.life.org.au/imlac or call Dianne 0425 140 981



TUESDAYS @ BOYD - \$5 DONATION

BOLLYWOOD WORKOUT

Inspired by the high energy music from Indian/Bollywood films these workout sessions are focused on building and developing your dance technique and most importantly, having tonnes of fun!

TUESDAYS - THURSDAYS & SATURDAYS
CHUNKY MOVE DANCE CLASS
 Mondays to Thursdays and Saturdays at 111 Sturt St. Chunky Move dance classes are the perfect way to unwind, get fit and improve flexibility and strength.
www.chunkymove.com



TUESDAYS
LAUGHTER YOGA @ BOYD
 Laughter Yoga is a unique concept that allows you to laugh even when you least feel like it and is ideal for all ages. Sessions are at Boyd Community Hub, Assembly Hall each Tuesday at 6pm.



MONDAYS @ BOYD
JUSTICE OF THE PEACE
 Local Southbank JP Atilla Akguner offers two hour sessions every Monday morning from 11am until 1pm at the Principal's Office at Boyd. To book in a time contact: atillaakguner@gmail.com



FRIDAYS @ BOYD
MAT PILATES
 For \$15, this weekly class runs from 7.15am until 8am. For more information contact Angela on 0423 283 465 or via email: info@angelamaree.com

FIRST FRIDAY OF THE MONTH @ BOYD
FREE HEARING TESTS
 Hearservice offers a qualified team of audiologists and speech pathologists to provide free monthly checks. The checks run between 10am and 12pm. To book an appointment call 1300 302 031

MONDAYS @ BOYD
ZUMBA
 For an optional donation enjoy a pilates class between 7pm and 8pm. For more info contact Catalina: partywithlatinas@gmail.com



FRIDAYS 8AM - 9AM @ BOYD
COMMUNITY TAI CHI
 WULONG TAI CHI offers you the opportunity to enhance your strength, balance, flexibility and well-being in a friendly, supportive environment. All welcome. lily@wulongtaichi.com.au



SUNDAYS
ARTS CENTRE MARKET
 Meet over 80 of Victoria's finest artisans first hand. Discover how these unique artworks are made, chat directly about the products, inspirations and techniques.
www.artscentremelbourne.com.au

WEDNESDAYS @ BOYD
FREE WALKING GROUP
 Join local fitness experts JustInTime as they lead a 'not just walking group' for Boyd walkers. The program runs on Wednesdays from 9.30am to 10.30am.



SATURDAYS @ BOYD
COMMUNITY YOGA
 The free class is gentle yet dynamic in synchronising active movements with active breath. A perfect start for beginners and older people alike. Bookings essential.
beishen.happinessproject@gmail.com



JUNE 26 @ LA CAMERA SOUTHGATE
JAZZ AND SHIRAZ
 The very popular Jazz and Shiraz is back in June featuring wine tasting, scrumptious Italian food and soothing Jazz. Bookings essential!
www.lacamasouthgate.com

TUESDAYS
SOUTHBANK ROTARY
 Rotary Club of Southbank meets weekly for dinner on most Tuesday evenings throughout the year at Federation Square. Visitors are always welcome.
www.southbank.org.au

SECOND TUESDAY OF EVERY MONTH
LIONS CLUB
 The new Melbourne City Southbank Lions Club hosts its monthly meetings at Boyd from 7pm until 8pm. All welcome.
 Email chengji1214@gmail.com for more information

FIRST THURSDAY OF EACH MONTH
SUNRISE PROBUS CLUB
 For over 50s living in Southbank. Join for fun, activities, events and friendship. First Thursday of the month at Library at the Dock 10am. Contact Sue 0425 831 954.
MSPC.docklands@gmail.com

BUSINESS DIRECTORY

BROTHEL

皇宮 Studio 466
美女如雲

466 City Road South Melbourne
near Crown Casino, Tram 96, City Road Stop
Call Now **96964666**
www.studio466.com.au
SWE4215BE

CAFE

Lindt
CHOCOLATE CAFÉ

Find a café at lindt.com.au

FESTIVAL OF OFFERS
INDULGE THIS WINTER

CARPET

Ph: **9761 4451**

CARPET TILES FROM \$1.10 EACH
EASY AND AFFORDABLE
ENVIRONMENTAL

McMATS CARPET MARKET
FACEBOOK | GOOGLE McMats
Cheap delivery available | Bayswater North

CAR RENTAL

Rental by the hour with Budget Southbank.

• Prices start from \$10.25 p/h
• No ongoing costs
• No joining fees

Call now to enquire
(03) 9299 2222 295 City Rd, Southbank

CHURCH

St Johns
Southgate

20 City Road Southbank
Telephone 9682 4995
www.stjohnssouthgate.com.au

COLLECTABLES

DOWNIES
COINS & COLLECTABLES

Shop U04 Southgate,
3 Southgate Avenue, Southbank 3006

P: (03) 9686 8411 E: melbourne@downies.com
W: www.downies.com

EDUCATION

holmesglen

To find out more,
call 03 9564 2716 or
visit holmesglen.edu.au

ESCORTS

www.paramour.com.au SWA113E

(03)9654 6011

Melbourne's Finest Escorts
can be at your door in 5min
as we're located in the CBD

EVENTS

Aerial by food&desire

17 Dukes Walk, South Wharf
03 8646 6000
www.foodanddesire.com.au/aerial

FUNCTIONS

St Johns
Southgate

Facilities hire Beautiful venue for
weddings and memorial services
Concert venue with excellent acoustic
and comfortable seating Spacious
function room Meeting rooms Kitchen

20 City Road Southbank
Telephone 9682 4995
www.stjohnssouthgate.com.au

GYM

JUSTINTIME
PERSONAL TRAINING

Mobile personal trainers that
come to you and save you time

Justin Moran justintimept.com
0411 798 934 justin@justintimept.com

HAIR & BEAUTY

RoopRani
herbal beauty salon
HAIR & BEAUTY SPECIALISTS

P5 SOUTHGATE COMPLEX - PH 9686 6504
WWW.ROOPRANI.COM.AU

HANDYMAN

10 G PROPERTY SERVICES

• Inner-city apartment specialists
• Property repairs and maintenance professionals
• Free quotes

"No Job Too Small"

Phone Mick on 0448 778 271
E: 10gpropertieservices@gmail.com

SOUTHBANK PAINT RIGHT

224 Normanby Street, Southbank
T: 9272 7600
www.southbank.paintright.com.au

HEALTH

BROAD BEAN
ORGANIC GROCER

CERTIFIED ORGANIC FRESH PRODUCE

Shop 3, 26 Fanning St, Southbank
broadbeanorganicgrocer

PETCARE

Port Melbourne Veterinary Clinic & Hospital

**FRIENDLY PROFESSIONAL
PET HEALTH CARE**

Open 7 days a week
Mon-Fri 8am-7pm
Sat-Sun 9am-5pm

For advice & appointments Ph: 9646 5300
www.portmelbournevet.com.au
109 Bay St, Port Melbourne

PHOTOGRAPHY

photography studies college

psc.edu.au/courses
9682 3191
Australia's No 1 Photography College

*Winner National Photography Industry APP Award for Excellence in Photography Education
2014, 2013, 2012, 2011

PHYSIOTHERAPY

**Elite Sports
Physiotherapy**

Sports & Spinal Physiotherapy
Remedial Massage
Clinical Pilates
Post-Surgical Rehabilitation
Free Injury Assessments
WorkCover/ TAC Claims

L3, 4 Freshwater Place, Southbank (enter via Genesis Fitness)
PHONE: 9690 2626 WEB: www.elitesportsphysio.com.au

REAL ESTATE

CityResidential
REAL ESTATE PTY LTD

T: 03 9001 1333
818 Bourke Street,
Docklands
VIC 3008

SALES Glenn Donnelly m: 0419 998 235

LEASING Lina D'Ambrosio m: 0430 959 851

www.cityresidentialbourkestreet.com.au
SELLING | LEASING | PROPERTY MANAGEMENT

LUCAS

lucas real estate
luxury apartments for sale and lease
newquay | 1/401 docklands drive docklands
yarras edge | 62 river esplanade docklands
03 9091 1400 | lucasre.com.au

Melcorp Real Estate

Your local sales and rental specialist

Melcorp Southbank
11 Power Street, Southbank
+61 (3) 9696 8869
melcorp realestate.com.au

Ray White

Ray White Southbank
111 Clarendon Street, Southbank 3006
P:(03) 8102 0200
F:(03) 8080 3284

RESTAURANT

Southgate, Southgate Complex,
UR3/3 Southgate Ave, Southbank
Phone: (03) 9696 0111
www.bluetrain.com.au

BLUETRAIN
melbourne's meeting place

MY GOODNESS
PIZZA & BURGERS

check us out for a delicious range of
pizza, burgers and much more.

T 9696 3962
Open from 11am till late
186 City Road Southbank
mygoodnesspizza.com.au

NEW CO SOUTHBANK

LA CAMERA
SOUTHGATE

www.lacamerasouthgate.com
p. 9699 3600
e. eat@lacamerasouthgate.com

SCHOOLS

www.haileybury.vic.edu.au

HAILEYBURY
KETTLEBOROUGH BRIGHTON BERNICK CITY BEILING

SERVICES

Stop Noise
ADD ON DOUBLE GLAZING

NOISE REDUCTION SPECIALISTS

1800 880 844
INFO@STOPNOISE.COM.AU
WWW.STOPNOISE.COM.AU

SUPERMARKET

FOODWORKS
Works for me!

180 City Road, SOUTHBANK
P: 9686 1561



RayWhite

707/109 Clarendon Street, **SOUTHBANK**

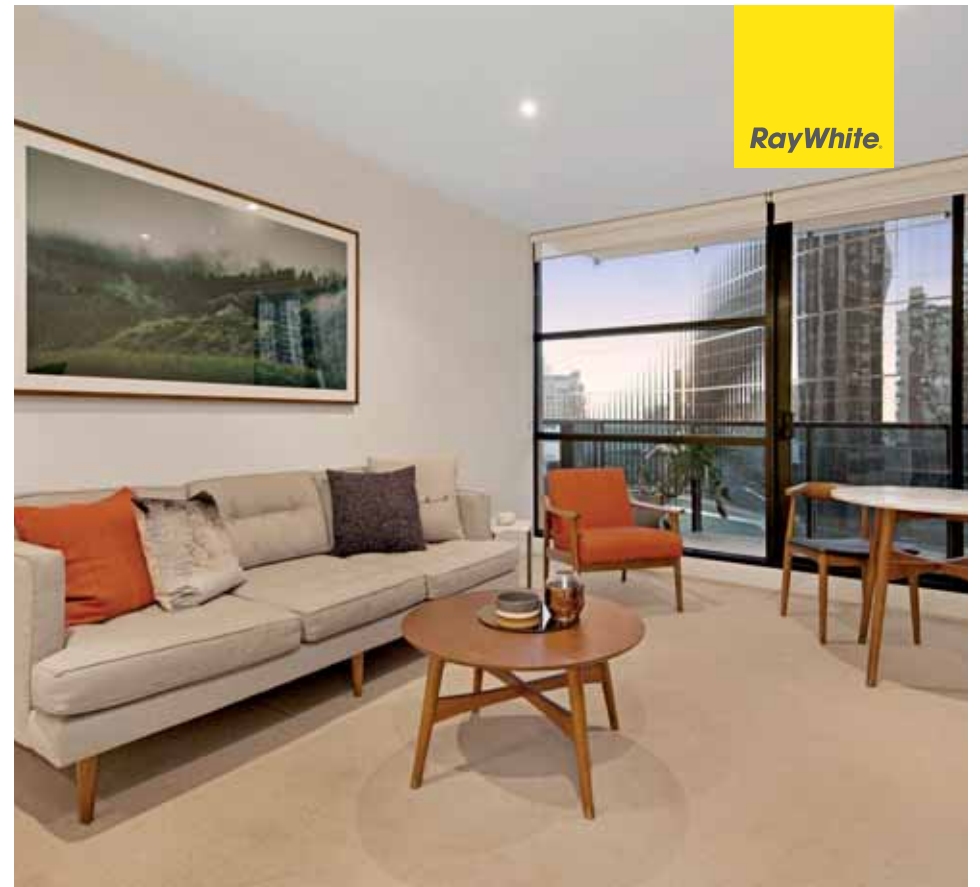
1 🚗 1 🏠

- Boasting an Impressive 73m2 (approx) in Total Size
- Large Master Bedroom
- Separate Kitchen and Dining
- Large Terrace for Entertaining
- North-Westerly Facing

Sale
\$368,000 - \$388,000

Jesse Lorenz
0403 142 119

raywhitesouthbank.com.au



RayWhite

907/50 Haig Street, **SOUTHBANK**

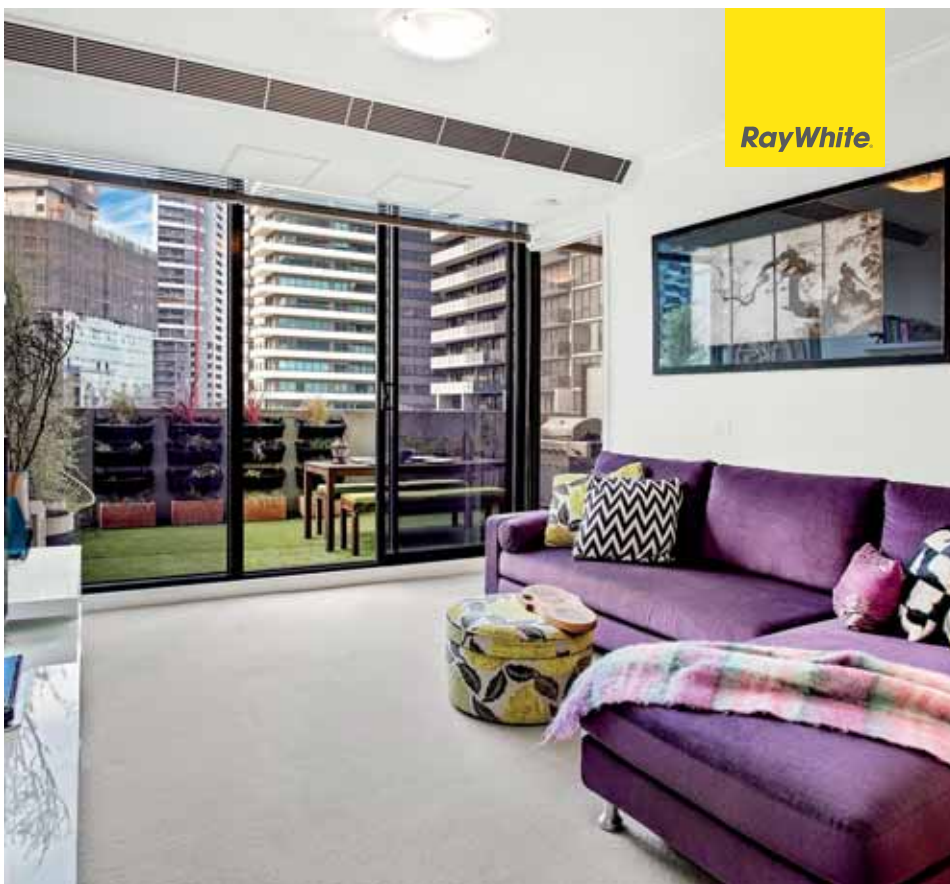
1 🚗 1 🏠 1 🏠

- Expansive Living
- Light Filled
- North Easterly Aspect
- Quiet and Convenient Southbank Location
- Euro Laundry With Dryer

Sale
\$380000

Jesse Lorenz
0403 142 119

raywhitesouthbank.com.au



RayWhite

807/63 Whiteman Street, **SOUTHBANK**

1 🚗 1 🏠 0 🏠

- Car parks available for individual purchase/lease
- Trams at your doorstep
- Expansive outdoor terrace (25m2 approx)
- Vacant possession available

Sale
Contact Agent

Michael Pastrikos
0404 282 864

raywhitesouthbank.com.au



RayWhite

718/65 Coventry Street, **SOUTHBANK**

1 🚗 1 🏠

- Architecturally designed by Woods Bagot
- Modern open plan design and high end finishes
- Stainless steel kitchen
- Ducted reverse cycle AC

Sale
Contact Agent

Sebastian Karagiannis
0488 042 261

raywhitesouthbank.com.au