

The voice of Southbank, South Wharf & Montague

SOUTHBANK Local NEWS

■ Southbank Primary School?

Page 4

■ New Boulevard revealed

Page 7



■ Love locks are back!

Page 9

■ YRBA meets new Parks CEO

Page 12



Raise your brasses!

A student brass ensemble provided a fitting celebration to help mark the beginning of construction of the \$104.5 million Ian Potter Southbank Centre on August 2.

Member for Albert Park and Minister for Creative Industries Martin Foley and Lord Mayor Robert Doyle joined University of Melbourne students and staff in turning the sod on the iconic project.

The new Melbourne Conservatorium of Music (MCM) will commence classes at the Victorian College of the Arts (VCA) in 2019.

Read more on page 6.



Martin Foley MP (centre right) and members of the Melbourne Conservatorium of Music Brass Ensemble.

Photo: Sav Schulman

Lord Mayor joins fight for low-rise

By Sean Car

City of Melbourne councillors have unanimously called on Minister for Planning Richard Wynne to help protect Southbank's arts and low-rise precincts from high-rise development.

Local architect turned developer Hayball's contentious 18-storey proposal for the site of its current office at 135 Sturt St came before councillors for comment at the Future Melbourne Committee (FMC) meeting on August 1.

Despite Hayball shaving off two levels from its last proposal and receiving the endorsement of council's planning officers, Lord Mayor Robert Doyle moved an

alternative motion objecting to the proposal.

Having first submitted its original proposal for a 42-storey tower in 2015, 135 Sturt St is now being assessed at the Victorian Civil and Administrative Tribunal (VCAT) on the basis of the Planning Minister's failure to determine upon the application within the allocated time.

When the application last came before councillors for comment back in November

2016 as a 20-storey proposal, the Lord Mayor described it as an "absolute shocker."

While planning officers determined that Hayball's latest application adhered to all applicable statutory planning controls, the Lord Mayor said it was still too tall and out of character with the area.

"I want to be entirely consistent with my earlier statements because I believe they are still true," he said. "This has to be a political

decision rather than a statutory planning decision."

"I hope the Minister for Planning will take this up. He does have the power to remove it from VCAT and make a decision as the minister and I think that is the best avenue for us to pursue."

Continued on page 2.

FOODWORKS
Works for me!



WE ARE YOUR LOCAL GROCER!
182 City Road, SOUTHBANK

Lord Mayor joins fight for low-rise

Continued from page 1.

"I think we have a very good argument on height and I think we have a very good argument on the failure to relate to the significance of the arts precinct, which is a well understood document now prepared by State Government."

"This does give us some grounds to argue in VCAT should the minister decline to take up our request. I stand by what I have said earlier about this development and that is displayed in the motion."

Chair of planning Cr Nicholas Reece said council had to do everything it could to preserve the character of the Arts Precinct.

"It's simply a matter of it being too high, too much and too close to Melbourne's Arts Precinct," he said. "We are very blessed to have the arts precinct that we do and we must do everything we can to protect it."

Assistant chair of planning Cr Rohan Leppert said that while the application adhered to the density controls on the site, there was no reason why height couldn't be reduced.

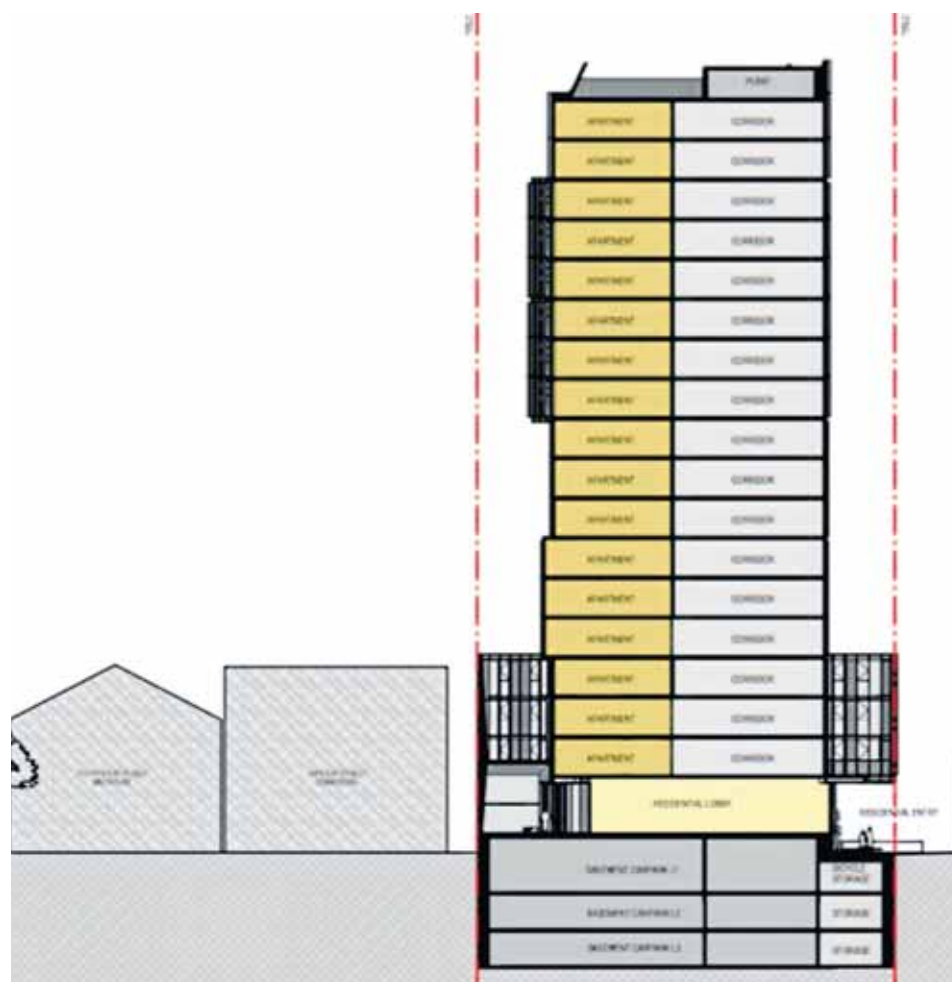
At 54.9 metres high, the building would tower over the neighbouring heritage-listed Malthouse Theatre, which measures at 14 metres, as well as low rise apartment complexes in Southbank Village.

It also measures at 14.9 metres above Sturt street's 40-metre discretionary height limit, which the Lord Mayor has previously described as too high for the area.

Seven local residents spoke in strong opposition to the application on August 1; including Southbank Residents Association president Tony Penna and convener of the Save Dodds Street group Eileen Vamos.

Mr Penna said the application was "atrocious in every way," while Eileen Vamos described it as "another unattractive glass tower."

"The highly successful Hayball architects



Designs from the City of Melbourne's town planning report of 135 Sturt St.

had the perfect opportunity to give back to the arts community and be acclaimed as innovative and sensitive designers who looked beyond 135 Sturt St and considered the aesthetics of the whole of this special character zone," she said.

"A low-rise development that considered the charm of Southbank Village would have been admired for many years. There is nothing to admire about a high-rise towering over the theatres, galleries and apartment complexes."

"Charming Southbank Village will be divided in half. Where in the world is there a village with a high-rise?"

Hayball architect Robert Stent registered to speak at the August 1 meeting, however he didn't attend.

State Member for Albert Park Martin Foley said that he was well aware and supportive

of the City of Melbourne's position and that government would work with the city to act in a timely way.

He said it was important that any development within the Arts Precinct emphasised street activation and arts precinct activity.

"Both the Lord Mayor and I have had concerns about this development proposal's impact on our world-class cultural arts precinct," he said.

"I will continue to work with the City of Melbourne, our local Southbank community and the cultural organisations in the area to make sure our world-class arts precinct is made better"

A spokesperson for Minister for Planning Richard Wynne said he had not yet made a decision as to whether or not he would pull the case out of VCAT.

Suite 108, 198 Harbour Esplanade
PO Box 23008 Docklands 8012
Tel: 8689 7980 Fax: 9602 2929
www.southbanklocalnews.com.au

Editor: Sean Car

Publisher: Shane Scanlan

Tel: 8689 7980 Fax: 9602 2929
advertising@southbanklocalnews.com.au

Reader contributions are welcome.
Please send articles and images to
news@southbanklocalnews.com.au

Deadline for edition 67 is August 31.

CONNECT

Keep up to date with local news & events.



Follow us on Twitter
@SOUTHBANK_News



Like us on Facebook
Southbank Local News



Like us on Instagram
SouthbankLocalNews



Broad Bean
ORGANIC GROCER

EAT.DRINK.SHOP
ORGANIC

SHOP 3, 26 FANNING ST, SOUTHBANK



broadbeanorganicgrocer



broadbeanorganicgrocer

OPEN
7 DAYS

MON - FRI 7AM - 7PM
SAT 9AM - 6PM
SUN 10AM - 6PM

Broad Bean
ORGANIC GROCER



High-rise Sturt St trend continues

Locally based architect Rothelowman has submitted an application to the City of Melbourne for a 19-level mixed-use tower at the site of its office building at 153 Sturt St.

The application follows neighbouring architect Hayball's recent submission for a high-rise tower at its office building at 135 Sturt St, adding to the trend of high-rise development along the edge of Southbank's low-rise precinct.

A 16-storey development was also approved last year for 250 Sturt St, while 175 Sturt St is currently the subject of a 13-storey proposal.

While its proposal measures at an overall height of 59.6 metres, which is 19.6 metres above the area's discretionary 40 metre height limit, Rothelowman's co-founding principal Shane Rothe told *Southbank Local News* that a range of different heights was what the area needed.

"The State Government's Blueprint vision of the Arts and Garden precinct requires the private sector to contribute to the built form. Clearly this will not happen unless there is incentive over and above a viable base line development," he said.

"A balance is required to encourage contributions to this vision or else it will simply not happen."

In its designs, Rothelowman notes the building's "recessive transition from Sturt St", which adheres to mandatory height and setback controls set on neighbouring Dodds St.

The building rises four-storeys and is setback 30-metres from its Dodds St frontage. In its plans Rothelowman states that overall, the building "supports physical and visual connections to the CBD and Arts Centre spine."

Rothelowman has emphasised its collaboration with both the City of Melbourne and Creative Victoria in creating the proposal, with the development to feature strong artistic and affordable housing components.



A render of Rothelowman's proposal for 153 Sturt St.

Image: Rothelowman.

Out of the 164 apartments, Rothelowman has included 39 'naked apartments', which according to its plans, are open plan apartments stripped back to bare essentials offering "affordability, diversity and flexibility."

The remaining apartments include 32 one bedroom, 85 two bedroom and five three bedroom apartments.

At the ground floor level, Rothelowman has included a public "through block link", connecting Sturt St to Dodds St with a series of ground floor activations. This activation is defined by a "green" theme and includes co-habitual arts spaces, artistic installations and two open sky courtyards.

Mr Rothe said that based on positive discussions with the City of Melbourne and Creative Victoria, the company was confident that the proposal would help to

enliven the Arts Precinct and contribute to the vision described within the Arts Precinct Blueprint.

"Our proposal offers affordable housing, ground floor themed accommodation and a public link from Dodds street to Sturt street in exchange for additional height, a height that is not out of context," he said.

At 22,276 sqm, the application is subject to the City of Melbourne's approval as the responsible authority.

Neighbouring architect turned developer Hayball has been the subject of fierce public scrutiny for its 21-storey proposal at 135 Sturt St, which has since been lowered to 18-storeys (read story on page 1).

Member of Save Dodds Street, the group formed in opposition to Hayball's proposal, and resident of the neighbouring City View apartments Julie Cowley said the height

of Rothelowman's proposal was out of character with the area.

"Our wonderful Arts Precinct is under further attack by opportunist developers and we will be calling on council to support the rejection of this development as they did so supportively with 135 Sturt St," she said. "I must urge all residents to join us in this next battle and it is even closer to home."

"As a resident of the lovely little apartment City View Tower block at 161 Sturt Street, I will be urging all residents to stand together and be loud and be clear about what we want for the Melbourne Arts Precinct."

The application is currently being assessed by the City of Melbourne.

What do you think about this latest high-rise application for Sturt St? Send your thoughts to news@southbanklocalnews.com.au



LUCAS

LOCAL KNOWLEDGE
LOCAL FOCUS
COMMERCIAL EXPERTS

We welcome you to contact us directly to discuss **your commercial real estate needs**, and to learn how we can add value to your business.

julian lebdeh | commercial manager
0488 088 924
julian@lucasre.com.au

9091 1400 | lucasre.com.au

Southbank Primary School?

Editorial Comment By Sean Car

The new vertical primary school currently under construction at Ferrars St, which will open to students next year, could well be named after Southbank.

A name to replace the school's interim name South Melbourne (Ferrars St) Primary School is yet to be determined and based on the State Government's naming rules, Southbank Primary School is a realistic candidate.

While the school's Ferrars St location is within the City of Port Phillip's municipality, it sits right within the border of Southbank's suburban boundary.

Under the naming rules outlined by the Department of Environment, Land, Water and Planning (DELWP), a name must adhere to guidelines set out in the Geographic Place Names Act 1998.

One of those rules is that a place cannot be named after a location it is not in. Therefore, the name foreseen by many, South Melbourne Primary School, does not comply.

While located in the Montague Precinct of Fishermans Bend, Montague Primary School could potentially clash with the Montague Continuing Education Centre on Montague St.

The school's principal Noel Creece refused to comment when contacted by *Southbank Local News*, while State Member for Albert Park Martin Foley said the matter rested with the Department of Education and Training.

When asked if Southbank Primary School was being considered as a name, a spokesperson for Education Minister James Merlino said the naming process was still underway.



A render of the new vertical primary school on Ferrars St, which will open in 2018.

"South Melbourne (Ferrars Street) Primary School is an interim name and the school naming process is currently underway," the spokesperson said.

"The school will continue to be called South Melbourne (Ferrars Street) Primary School until a new name is endorsed and gazetted, which we expect to happen over coming months."

As reported in the June edition of *Southbank Local News*, Noel Creece said that the majority of expressions of interest from families wanting to enrol their kids had so far come from the Southbank and South Wharf

catchment zone.

Under school naming rules, a name must be put to the community for a 30-day consultation period before ministerial approval can be issued.

With the school set to open in 2018 the matter could prove to be a stumbling block for the school's administration, as a name will be required for everything from registering an ABN to producing uniforms.

Do you think the new school should be named Southbank Primary? Send your thoughts to news@southbanklocalnews.com.au

Montague forum

Southbank Local News and the Montague Community Alliance will hold the next Montague Community Forum on Wednesday, September 20.

The forum will once again be held at the Golden Fleece Hotel on the corner of Buckhurst and Montague streets.

Discussions have taken place with City of Port Phillip's Gateway councillors Mayor Bernadene Voss, Cr Marcus Pearl and Cr Ogy Simic to be part of a community discussion about the future of the Montague Precinct.

While the inaugural forum in May focused on the pressing matter of traffic management in the precinct, the second will aim to continue general discussions around neighbourhood planning.

It is hoped new City of Port Phillip CEO Peter Smith will also join the panel alongside Gateway councillors, who will each be asked a small series of questions before the forum is opened to Q&A.

Information from the forum will be captured and used in devising a neighbourhood working agreement between residents, developers and the council for future development of the precinct.

More information about the forum will be published in the September edition of *Southbank Local News*.

Works begin on new park

The transformation of Fishermans Bend has taken a big step forward with work underway on the new Montague Park.

The 8000 sqm park is equivalent to two and half times the size of Melbourne's City Square and is diagonally opposite the new South Melbourne Ferrars Street primary school under construction.

Jointly purchased with the City of Port Phillip, the park will provide the growing Fishermans Bend community and the students at the adjacent primary school with much needed open space to support a healthy and active lifestyle.

Development of the park will be staged with grass, seating, lighting, trees, footpaths and basic amenities upon opening in mid-2018, followed by consultation with the local community to determine what other elements are needed to support a wide range of recreational activities and uses.



This is not any sofa. This is a King.

Delta III - Is it possible for a sofa to be as comfortable as it is clever? Whilst you may see what appears to be a finely crafted and supremely comfortable sofa before you, it is, in fact so much more than that. For beyond its refined aesthetic, lies a wealth of optional storage and functionality. Built around King Living's engineered steel frame, delivering ultimate flexibility to move with every occasion that family life can throw at it. After all, this is not any sofa. This is the new Delta III.



New and exciting Showroom
80 City Road, Southbank VIC 3006
Ph. 8633 8666 | KINGLIVING.COM

Celebrating
40 years
of design
innovation

KING[®]
L I V I N G

Sustainable Southbank

If you like living sustainably, pencil Saturday, August 19 into your diaries for a day of interesting activities at the Boyd Community Hub.

In addition to Boyd's monthly Sustainability Group meet-up, locals are invited to the Bobbin Lace Leaf Workshop, which will take place from 12pm to 3pm.

If you've ever wondered how lace was made before machines were used, this workshop is your opportunity to be introduced to the rhythm and beauty of bobbin lace making (pictured).

Instructor Lindy de Wijn and other lace making women will share their skills to teach locals the basics of bobbin lace and help you create your very own lace leaf to add to an installation in the Boyd foyer or take home to enjoy! Lunch will also be provided.

Southbank's local Sustainability Group will also meet from 11am until 2pm to work on a range of activities, including a working bee on the Boyd's community planter boxes.

The group will discuss a range of new ideas, including a pop up garden at Boyd over summer, community composting and a zero waste education campaign.

Both activities are free but bookings are essential and can be done via [eventbrite.com.au](https://www.eventbrite.com.au)



Faculty of VCA & MCM Dean Professor Barry Conyngham, University of Melbourne Vice-Chancellor Professor Glyn Davis, Lord Mayor Robert Doyle and Martin Foley MP turn the sod on August 2. Photo: Sav Schulman.

Raise your brasses!

Continued from page 1.

University of Melbourne Vice Chancellor Professor Glyn Davis and Dean of the Faculty of the Victorian College of the Arts (VCA) and Melbourne Conservatorium of Music (MCM) Professor Barry Conyngham joined Minister Foley and Cr Doyle in turning the sod on the new conservatorium.

Professor Glyn Davis said the new building was one of the largest enhancements in the Faculty's history and would confirm the Faculty internationally as a pre-eminent school of art and music.

"The realisation of this project is the culmination of years of collaboration with our project partners, and the exceeding

generosity of our donors," Professor Davis said.

Professor Barry Conyngham said the project was a once-in-a-century event that would produce Australia's next generation of musicians and bring together the VCA and MCM.

"The University of Melbourne was one of the first Australian universities to offer formal studies in music, and the new headquarters for the Conservatorium will see that legacy continued and amplified alongside all arts disciplines on our Southbank campus," Professor Conyngham said.

Martin Foley said the Victorian Government

was proud to partner with the University – and with its philanthropic supporters – to make the project happen.

"The new Melbourne Conservatorium will be a transformative link in our arts precinct that will boost our cultural and educational offering and attract the best and brightest talent to our creative state. It will further help build Southbank's Sturt street as the cultural hub of Melbourne," he said.

The Ian Potter Southbank Centre joins the current \$42 million redevelopment of the Dodds Street Stables into a visual arts wing, and the introduction of the Buxton Contemporary Museum.



Instant. Free. Guaranteed.

 BOOK NOW

dimmi

Reserve the moment
online restaurant reservations

southgate

Melbourne, your table is ready

Instant online bookings now available!
southgatemelbourne.com.au

New look Boulevard revealed

By Chelsea Cucinotta

The City of Melbourne has released new renders of Southbank Boulevard. The \$35 million project will see Southbank Boulevard and Dodds St transformed into 2.5 hectares of public open space in 2020.

The new space planned for the front of the ABC alone will be roughly the same size as City Square, while Dodds St will be remade into a public space that can host everything from street performances, farmers markets, and even music festivals in Southbank’s very own Arts Precinct.

“In Melbourne and in other cities around the world, governments are looking to turn underutilised roads and car parks into important green space,” Lord Mayor Robert Doyle said.

“The new public open space and neighbourhood parks we’re creating in Southbank will improve public amenity for the 20,000 residents and 50,000 office workers in the city’s most densely populated suburb.”

Key aspects of the public open space include 1.05km of dedicated bicycle lanes, upgraded public transport stops including ‘green’ tram tracks, a commitment to improving biodiversity through planting diverse trees with seasonal variation, and a neighbourhood space for Southbank residents and visitors alike.

According to the chair of the City of Melbourne’s Environment Portfolio, Cr Cathy Oke, the Southbank Boulevard

project was part of an ongoing urban design program, which has seen over 80 hectares of underutilised asphalt and infrastructure made into public open space in the last 30 years.

“Converting grey to green supports the City of Melbourne’s strategies for managing the urban forest, climate change, water, biodiversity and wellbeing,” Cr Oke said.

“Green spaces reduce stormwater volumes, reduce the impact of development on ecosystems, increase biodiversity, provide habitats for wildlife, keep our soil moist and reduce the urban heat island effect.”

The new space will continue to cater for current traffic volumes in Southbank Boulevard. In 1988, Southbank Boulevard carried 40,000 to 50,000 vehicles a day. This number has since reduced to 13,000 vehicles per day after the construction of Queensbridge Square in 2001 meant direct access to the CBD was closed.

The new public space has been designed with the increased residential population of Southbank in mind, with the population forecast to rise by 175 per cent over the next 15 years.

To view the full selection of renders visit participate.melbourne.vic.gov.au



(Bottom left) green tram tracks looking from St Kilda Rd, (top right) A new green park space near Kavanagh St, (middle right) new recreational spaces near Freshwater Place and (bottom right) a new playground.



Proven to increase firmness and decrease fine lines!

AUGUST SPECIAL

JUST **\$130**

INTRACUTICALS HYALURONIC HYDRATION
Revive, Replenish, and Protect your skin with Australian Made Intracuticals Oxygen Facial. The only Australian 3 Step hyaluronic layering system



JUST **\$130**

INTRODUCING “KEUNE CARE” BALINESE HOT SPA TREATMENT
Relax your mind and replenish your dry winter hair with our new Balinese Hot Spa Treatment

RoopRani
hair & beauty salon

P5 SOUTHGATE COMPLEX - PH 9686 6504 - WWW.ROOPRANI.COM.AU

* T&C's Apply. Offer ends on 31st of August 2017

Moray St tower approval

Minister for Planning Richard Wynne approved a 51-storey tower development at 42 Moray St last month.

The approval was formally announced by David Lock Associates (DLA), which has been providing statutory town planning services since the project's inception.

The project, developed by Capital Eight Pty Ltd, comes as yet another high-rise approval for Southbank, adding to our status as Victoria's and one of Australia's densest suburbs.

The corner 42 Moray St and 11-13 Hancock St site will comprise a 178-metre tower consisting 280 apartments and approximately 3000 sqm of much-needed employment space.

DLA associate Brodie Blades said the building would "raise the bar" within the existing urban context through exemplary ground floor activation and public realm amenity.

"The building has been designed to act as a landmark and respond to its prominent location at the gateway to the City of Melbourne through the introduction of a

district, curvilinear tower form within the existing urban morphology of Southbank," he said.

"We congratulate all involved in the approval of this project and look forward to seeing construction commence shortly."

Councillors unanimously endorsed the 171-metre application at the Future Melbourne Committee meeting earlier this year on March 21.

While council's planning officers supported the application in their report, they recommended endorsement subject to a number of conditions.

Cr Rohan Leppert had said that given the challenges of developing in a floodplain area the application struck a good balance when activating the public realm.

"Balancing the flood constraints with the need to provide some high quality interaction with the public realm and the building interface, this building certainly does that so I'm happy to support it," he said.



Tomorrow will eventually be today, see tomorrow today at Scoogle.

The Guilfoyle 131 Wells St. The Domain 3006
call for an appointment 9077 9883
www.scoogle.com.au



Featuring the City of Port Phillip's Gateway Ward councillors:

- City of Port Phillip Mayor Bernadene Voss
- Cr Ogy Simic
- Cr Marcus Pearl

The Southbank Local News and the Montague Community Alliance invite local residents, workers and business owners to the second of three 2017 community forums focused on the current and future redevelopment of the Montague Precinct in Fishermans Bend.

The September forum will focus on **neighbourhood planning in Montague.**

When: Wednesday, September 20. 6pm for a 6:15pm start - 7:45pm
Where: The Golden Fleece Hotel, cnr of Montague and Buckhurst streets
Cost: Free

For more information:
email Sean at sean@southbanklocalnews.com.au
or Trisha at trishavery@bpca.com.au



Lovelocks are back!

Could this be a new lovelock bridge in Southbank?

The 20,000 padlocks previously fixed along Evan Walker Bridge, engraved or scribbled with messages as tributes to love, were removed by the City of Melbourne in 2015 when the weights became too heavy for the bridge.

The removal of the locks received an outcry from visitors and the local Southbank community, with one particular Southbanker, Kevin Neville, creating an online campaign that called for the council to “save them, return them”.

Hundreds of new lovelocks have since appeared on the south side of the Kings Way footbridge between Crown Casino and Sea Life.

Last year the City of Melbourne revealed that the lovelocks cut down in 2015 were melted or remade into artworks, which were displayed at a public exhibition.

What will be the fate of these new embodiments of people’s locking love at the Kings Way footbridge? Send your thoughts to news@southbanklocalnews.com.au



Love locks have reappeared in Southbank. This time on the footbridge between Crown Casino and Sea Life.

MCEC’s record year

By Kate Mani

The Melbourne Convention and Exhibition Centre (MCEC) has reached record-high financial year results for the fifth year in a row.

MCEC recorded a total operating revenue of \$80.1 million and a contribution of over \$969.1 million to Victoria in 2016/17.

The results are attributable to the 1026 events held at the MCEC during the last financial year, including 75 national and international conventions and 77 exhibitions.

The rise in popularity of MCEC’s Plenary concert venue has also played a role, with concert and entertainment events increasing by more than 50 per cent compared to the 2015/16 financial year.

Minister for Tourism and Major Events John Eren said that the results were an encouraging sign for MCEC’s 2018 expansion and future visitor numbers.

“The visitor economy is one of our greatest strengths, and MCEC plays a vital role in driving economic growth and creating jobs in Victoria,” he said.

“MCEC will be able to host even more events and attract more people through their doors once our expansion is complete.”

More than two million visitors have attended MCEC in the past year for various events and the venue has received a high satisfaction rate of 85 per cent and \$3.1 million in increased revenue.

MCEC’s Chief Executive Peter King believes that the venue’s upwards trends will continue with the expansion project, with an expected increase in revenue of 70 per cent by 2022.



Envirozones Operations Manager, Chris Holwell, with 68kg worth of cigarette butts at Queensbridge Square.

Recycling ciggies

The City of Melbourne is recycling millions of cigarette butts into industrial products.

Lord Mayor Robert Doyle said the council had collected 1.2 million binned cigarettes from busy city locations.

The cigarette butts collected will be made into practical items such as shopping pallets and plastic furniture.

“We collect more than 200,000 cigarette butts each week from 367 cigarette butt bins across the city: litter that may otherwise end up being washed down drains and into the

Yarra River,” Cr Doyle said.

A survey shows 10,500 cigarettes are being littered on the ground every day. The council said it spent \$13 million on collection and disposal each year.

The City of Melbourne placed a glass box filled with 200,000 cigarette butts on at Queensbridge Square on July 24 (pictured) to show the environmental impacts of littering cigarettes.





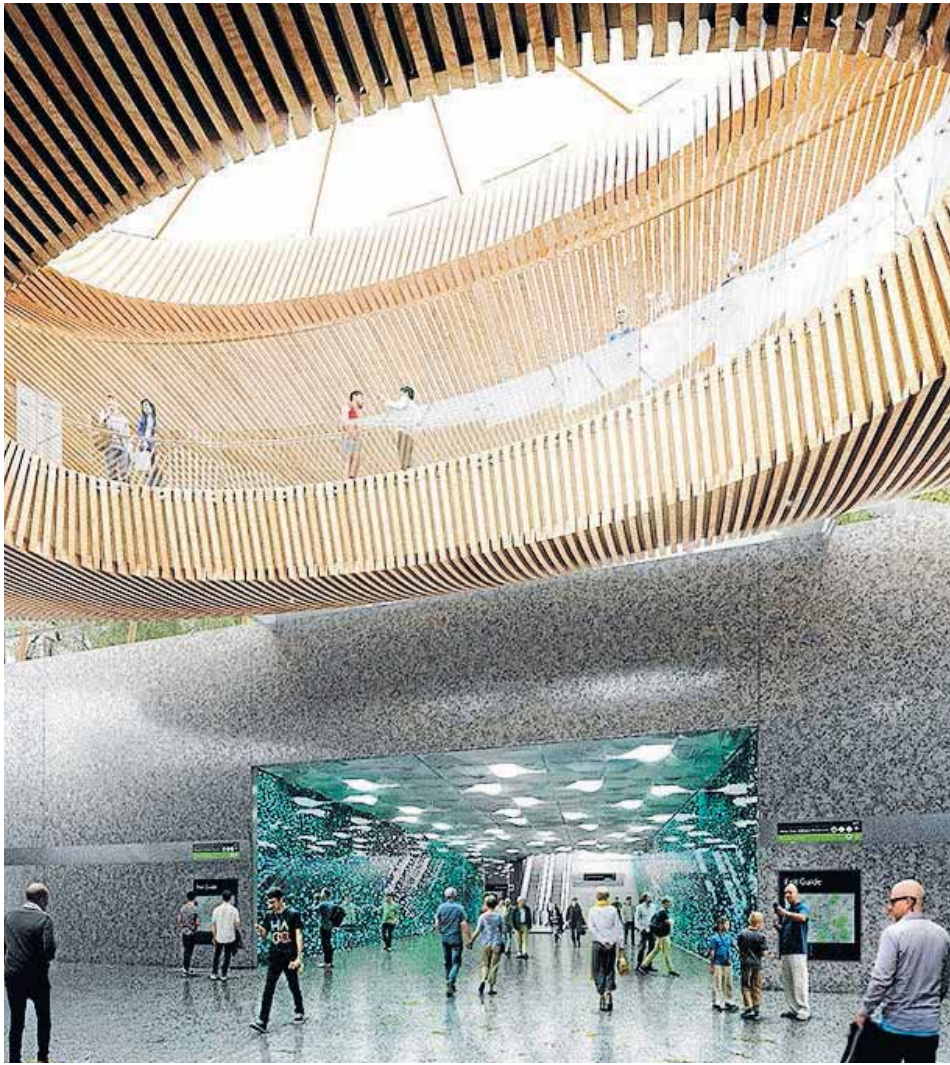

ENA Greek Street Food is part of Melbourne’s thriving dining culture. Situated on the banks of the Yarra River, ENA is bringing a modern twist to food inspired by the streets of Greece. Our menu encompasses the finest offerings from the land and sea.

We invite you to share the feasting with friends and family. YIAMAS!

Shop M4/9 Mid Level Southgate Complex, 28 Southgate Ave, Southbank
Ph: 9690 6205 Menu: enagreekstreetfood.com.au



GET \$10 OFF YOUR FIRST ORDER with code: **ROOMELE**
* Deliveroo Takeaway only



(Left) A render of the skylight of the new Domain Metro Station, (top right) an external view of one of the new entrances at the Domain Tram Interchange and (bottom right) an internal render entering the station.

Domain Metro Station unveiled

By Kate Mani

The new Domain Metro Station will lessen pressure on St Kilda Road and Swanston Street tram routes and generate greater access to Melbourne landmarks, as part of the Metro Tunnel Project.

The design and builders for the major tunnelling works and five underground stations have been announced, including Southbank's local Domain Station, which will sit below the current Domain tram interchange on St Kilda Rd.

The Cross Yarra Partnership consortium, comprising Lendlease Engineering, John Holland, Bouygues Construction and Capella Capital, has been selected for the project, following competitive bids from internationally recognised designers and builders.

Utility service relocations, construction site preparations and tram works are currently underway, with major tunnelling and station constructions to begin next year.

The Domain station's aesthetic design has been carefully planned to reflect the surrounding parkland and the Shrine of Remembrance, and will consist of bluestone, granite and timber.

The inside of the station will include retail outlets, installations and feature a natural skylight.

Four entry points near the Shrine of Remembrance grounds, at Albert Road Reserve and near the train-tram interchange on St Kilda Road will provide underground access through escalators, lifts and stairs.

The station will mean improved entry to sites such as the Shrine of Remembrance, the Royal Botanic Gardens and Albert Park.

It will also allow interchanging with City Loop services, including a direct underground connection to link the CBD North station with the Melbourne Central

concourse.

The Metro Tunnel project as a whole will transport passengers from the southern end of Swanston Street under the Yarra River, CityLink, Domain Parklands and St Kilda Road.

After arrival at Domain Station, the route will curve towards Toorak Road and then exit the tunnel in South Yarra, joining the existing Cranbourne-Pakenham line.

metrotunnel.vic.gov.au

BLUE TRAIN EST. 1993

Melbourne's meeting place

Receive **10%** off your meal with this voucher

Southgate Complex, Upper Level, Southbank
Phone: 9696 0111 Email: bookings@bluetrain.com.au

New Winter Menu!

Mon – Weds: \$20 Lunch Deal
Thurs: 2 4 1 Cocktails
Week days: Happy Hour 4pm – 7pm

BLUE TRAIN

Local students take on the UK

By Kate Mani

Two aspiring Southbank musicians have just returned from London as recipients of Nando's Global Music Exchange program.

Local residents Zoe Marshall and Isaac Liew, music students at JMC College in South Melbourne, were selected for a workshop and recording session at London's esteemed Roundhouse Studios.

This is the first year that the Nando's Global Music Exchange has involved Australian students. The program provides aspiring musicians with the chance to share, learn and create songs under the guidance of professional artists.

The Southbank pair, along with six other Melbourne students, worked with contemporaries from the UK and South Africa and received assistance from Australian hip-hop MC and producer Urthboy, UK singer-songwriter Ella Eyre and South African hip-hop artist Dope Saint Jude.

For Zoe Marshall, the opportunity was a unique chance to collaborate with global musical influences.

"Everyone who got selected had their own individual tastes and they're all into different genres. People from the UK and South Africa had their own influences and combining them together was really cool," she said.

The finished product for Marshall and

her group was an African-influenced rap song with an 80s vibe, which has been well received in the UK.

"Our track got played on BBC Radio One. I was really gobsmacked. To have that kind of exposure, that's pretty exciting, so I was stoked," Zoe said.

While the London experience may be over, the international collaboration and impact of the program is set to continue.

"We've already set up a social media page and we're still connected, we can still work overseas by sending each other ideas" Zoe said.

Back home in Southbank, Marshall believes that her suburb has had a big influence on her musical production.

"Sometimes the atmosphere can inspire me to write. I like to walk around when I write music and things that are happening around me in the area affect what I'm writing and what I'm feeling," she said.

"In Southbank on Friday nights we have JMC street sessions. Anyone from the uni can go up and just perform if they wish. They busk and that also gets filmed and put up on social media, so that's great practice. So far we've had really good feedback."



Local student Zoe Marshall was one of two Southbank locals to participate in the Nando's Global Music Exchange.

An Extraordinary Gift

More families are choosing Haileybury than any other school. An irreplaceable gift for a child's future!

Haileybury is **Ranked No.1 in Victoria** of all co-education primary schools and topped the state with the highest number of **Premier's VCE Awards**.

Haileybury knows that every young mind is unique.

Individual learning is enhanced by **award-winning teachers**, **small classes** and of course our acclaimed **Parallel Education** model for girls and boys.

Yes, an extraordinary gift!

**School
Tours**
19 August
2017



HAILEYBURY
KEYSBOROUGH BRIGHTON BERWICK CITY BEIJING





PV CEO Matthew Jackson and YRBA executive officer CEO Tim Bracher at last month's luncheon.

YRBA meets new Parks CEO

New Parks Victoria (PV) CEO was the special guest at last month's Yarra River Business Association (YRBA) luncheon at River's Edge Events at World Trade Centre Wharf.

Members were treated to another informative networking event overlooking the Yarra River, as YRBA executive officer Tim Bracher moderated an interesting Q&A with PV CEO Matthew Jackson.

With a strong background in tourism, Mr Jackson provided businesses with a great deal of optimism as he presented his vision for helping stimulate activation of the lower Yarra.

While PV regulation and bureaucracy has

long presented a frustrating barrier to local business, Mr Jackson asserted his ambition to work with local stakeholders to explore new ways of promoting more activity in the precinct.

The YRBA will hold its last luncheon for the year in November.

For more information visit yarrariver.melbourne

Prominent site for sale

By Chelsea Cucinotta

Neighbouring fringe properties at 127-129 Kavanagh Street and 63-83 Kings Way are currently listed for sale by Savills Australia.



An image of 127-129 Kavanagh St and 63-83 Kings Way captured long before the time is was painted pink!

Image: Heritage Council Victoria.

Southbank residents may recognise the corner property by its bright pink façade on Kings Way, situated behind the Boyd Community Hub. This prominent area of Southbank will only continue to grow with impending developments like OSK Property's \$1.5 billion Melbourne Square project and Boyd Park.

The 3000 sqm site has a planning permit approval for a twin tower development comprising 780 apartments and retail space.

The wife of Darwin Port owner Jingxia Liu and Landbridge Group's founder Ye Cheng

currently own the property, which is up for immediate private sale.

"Savills is currently in negotiations to sell the property in the \$40 million price range," said Savills CBD and Metropolitan Sales Director Clinton Baxter.

"Development of this project will provide housing for almost 2,000 people in 794 apartments and bring a significant boost to the local catchment for many Southbank businesses. It will also provide additional

amenity to the Kavanagh Street area in two large commercial/retail spaces at ground level."

While the property is characterised by its façade, it is understood to be integrated into the design of the new development.

According to Heritage Council Victoria, the two-storey brick building was originally constructed in 1888 as the headquarters for Austral Otis Elevator and Engineering Company Limited.

Interestingly, this establishment supplied most of the hydraulic elevators which made high rise development possible in the City of Melbourne for the first time.

It is said to have made a major contribution to making South Melbourne the manufacturing centre of Melbourne by the end of the 19th century, at a time when Victoria was the manufacturing centre of Australia.

YOUR CITY YOUR NEWS

Connect with us for all the latest news, events, updates and more in the City of Melbourne.

Find out what's on in the city at whatson.melbourne.vic.gov.au

Sign up to our Melbourne Magazine at magazine.melbourne.vic.gov.au

[f /cityofmelbourne](https://www.facebook.com/cityofmelbourne)
[@cityofmelbourne](https://www.instagram.com/cityofmelbourne)
[@cityofmelbourne](https://www.twitter.com/cityofmelbourne)

[f /whatsonmelb](https://www.facebook.com/whatsonmelb)
[@whatsonmelb](https://www.instagram.com/whatsonmelb)
[@whatsonmelb](https://www.twitter.com/whatsonmelb)





THE ARTS PRECINCT

Greater Together

By Chelsea Cucinotta

Artists ask how we can live and work together better in this new group exhibition.

In *Greater Together*, the latest exhibition at the Australian Centre for Contemporary Arts (ACCA), eight artist projects explore the concepts of collaboration and cooperation as means of artistic agency and solidarity.

The exhibition presents various forms of collaboration, and considers the broader meaning of communication on both artistic and global scales.

Highlights from the exhibition include *Goldin+Senneby*, a framework set up by Swedish artists Simon Goldin and Jakob Senneby, which sees a full-scale mature oak tree installed in the gallery.

Exhibition curator Annika Kristensen said: "Goldin and Senneby's project *Standard Length of a Miracle* takes the form of a text, an oak tree, work uniforms by ACCA's gallery

attendants that have been fashioned from clothes left behind at dry-cleaning stores, and a series of furnishings made from offcuts from the tree over the course of the exhibition."

In another project, Dutch collaborators and partners Bik Van der Pol bring together a number of voices, as they use Plato's philosophical *Symposium* to consider community responses to the challenge of climate change.

Field Theory will convert ACCA into a survivalist storeroom and explore how the skills of niche Melbourne clubs could be used to work together in the event of an apocalypse.

According to Kristensen, these artists have not only collaborated with each other in their eight given projects, but with writers, actors, and special interest groups around Melbourne.

There is also a ninth project titled *WORK/SHOP* drawing on themes of authorship,

production and labor, art as a commodity and retail as a space of exchange.

"This exhibition differs from others in that it intentionally seeks to show work that is either made collaboratively, or that otherwise addresses ideas of support, community, conversation and exchange," Kristensen said.

"*Greater Together* responds to some of the uncertainty and unease of our times. In periods of socio-political change, it is very natural for an artist or cultural producer to question what they do, and the relevance of what they do in relation to wider – sometimes more pressing – concerns. So I hope that in responding to this uncertainty, the exhibition has a currency or freshness that is relevant to our contemporary moment."

Greater Together will run at ACCA until September 17. The exhibition is free. Visit acca.melbourne/exhibition/greater-together/ for further details.



Becoming (again and again)

Locals are invited to come and explore the relationship between sculpture and performance this month at Southbank's creative open space Testing Grounds.

Becoming (again and again) sees artist Zoë Bastin use Testing Grounds as a platform to explore the relationship between the processes of making a sculpture, and its performative qualities.

Bastin's residency sees Testing Grounds installed with a coconut-encrusted hammock, as well as a plaster-casted clay mould, pierced and supported with a rope-perspex cylindrical grip.

Bastin creates both products and encounters and her assemblages act as "catalysts for choreographic play and improvisation throughout the residency".

Currently undertaking a PhD at RMIT University, Bastin has exhibited her works in Melbourne, rural Victoria and Zurich, Switzerland, and held numerous public performances.

Her residency runs until August 21 and is a free event for all ages.

testing-grounds.com.au



The Guru of Chai

A stirring comedy steeped in romance will run at Arts Centre Melbourne from August 22 to 27.

Watch highly acclaimed playwright and actor Jacob Rajan play the role of seventeen characters in this heart-warming story of impossible love and modern day magic.

One of these characters includes the *Guru of Chai*, a chai-wallah (tea-seller) whose life is forever changed when he witnesses an abandoned young girl bring Bangalore railway station to a standstill with her compelling song.

Loosely based on the Indian fairy-tale

Punchkin, this Indian Ink production has juxtaposed Indian modernity with its ancient gods on stages in Edinburgh, Singapore and the US.

With three Production of the Year awards, Best Play, Best Composer and Best Actor at the Chapman Tripp Theatre awards and two Edinburgh Fringe First awards, this is a must-see performance!

www.artscentremelbourne.com.au

Elephant Man

By Chelsea Cucinotta

Opening on August 9, the highly acclaimed production The Real and Imagined History of the Elephant Man will run until August 27 at the Malthouse Theatre.

Set in 19th century London, *The Real and Imagined History of the Elephant Man* follows the life of ostracised elephant man Joseph Merrick, from his birth to death.

With previous adaptations including a David Lynch film in 1980, the tale of the elephant man continues to draw in audiences young and old.

Director Matthew Lutton and playwright Tom Wright give the story new meaning in this performance, as they explore the curiosity and empathy Merrick inspires in those around him from his time in Victorian freak shows, to seeking asylum at the London Hospital in 1879.

Daniel Monks will perform the role of Merrick in his Malthouse Theatre debut. malthousetheatre.com.au



Tango at Melbourne Recital

See one of the world's leading exponents of the accordion James Crabb perform 'Tango' alongside the Ensemble Liaison at the Melbourne Recital Centre on August 31.

With an acclaimed authority on the music of Astor Piazzolla, Crabb will pay homage to great advocates of the genre including baritone Carlos Gardel, Piazzolla the violinist and composer Antonio Agri, and Jose Carla.

Equally at home in the western canon, the accordion brings its wide expressive range

to Dvorak's folk-inspired *Five Bagatelles, Op.47* and César Franck's beautiful *Prelude, Fugue and Variations*.

American contemporary classical composer John Mackay will present the tango in an exciting modern transformation in his *Breakdown Tango*.

Celebrate this expressive and passionate

dance form through a performance of rich music that will warm your soul and invigorate your mind.

The August 31 performance will start at 7pm at the Elisabeth Murdoch Hall. For tickets and more information visit melbournerecital.com.au

TANGO

Dance the night away with Ensemble Liaison & James Crabb (accordion).

Tango takes the lead role as Ensemble Liaison teams up with one of the world's leading champions of the accordion, James Crabb. Featuring works by Piazzolla, John Mackey and Dvořák, this expressive and passionate concert will warm your soul and invigorate your mind.

USE THE PROMO CODE 'SOUTHBANK' TO PURCHASE 2-FOR-1 TICKETS

Tickets \$50 (\$40 conc)

THU 31 AUG, 7PM
ELISABETH MURDOCH HALL



MELBOURNE
RECITAL
CENTRE

CNR SOUTHBANK BLVD &
STURT ST, SOUTHBANK

TO BOOK: 9699 3333
MELBOURNERECITAL.COM.AU

A transaction fee between \$5.50 and \$8 applies to orders made online and by phone. A delivery fee of up to \$5.50 may also apply.

PRINCIPAL GOVERNMENT PARTNER

CREATIVE VICTORIA





RACHEL HICKEY

Behind the bike

22-year-old Photography Studies College (PSC) graduate Rachel Hickey has combined her passions of cycling and photography through a stunning series of images exploring life both on and off the bike.



An image from Rachel Hickey's photoseries 'Anchor Point South Coast Cycling Team'.

Growing up in Camperdown in southwestern Victoria, Rachel said whether it was following family members around the country to races and events or competing herself, she had always been surrounded by cycling.

Equally passionate about photography, she said during her first two years she would travel five hours a day on the train from Camperdown just to make the journey to PSC, before relocating to Melbourne in 2016. Hence, she said it was a natural fit to

combine her two passions as part of her graduating folio, which initially began by capturing the usual aspects one would associate with cycling.

"I just wanted to talk about this community of cycling because it's so different," she said. "I grew up with this and I know it sounds simple but I just want to talk about what this is actually like."

"I'd go to my teacher and bring in a few hundred photos each time and it was all of people racing because I wanted to shoot speed and get that really crisp line. She would look through them and just say 'no what else have you got?'"

"I started looking at everything behind it, as in what don't people look at when you first think of cycling. I tried to push that first idea and make people see past that."

Having undertaken a bachelor of photography majoring in photojournalism, this shift in her approach to capturing the community she was so passionate produced fascinating insight for others to see into her world.

From cyclists snacking on almonds to tending to injured feet after a crash, she said her folio, which focused specifically on track cycling in a velodrome, had helped her see things in a different way.

"In my series there is not a single photo of a bike," she said. "I just put in lots of little things and let people make up their own minds and tried and have a neutral approach."

Having known she wanted to be a photographer since from a very young age, Rachel enrolled in PSC straight after completing high school and said she had loved her experience at the college.

Having graduated last year, she is now working for a production company in Richmond and has continued her involvement at PSC through its alumni program and provides mentoring to current students through PSC Pals.

"It's been nice to be apart of the PSC community," she said. "With the PSC Alumni it's a very different feeling from the PSC pals because everyone has been here and has left and doing different things but it's nice to bond over our experiences."

To view more of Rachel's work visit rachelhickey.com.au



OPEN DAY 2017

13 AUGUST 10am - 3pm

Get a taste of the PSC student experience and explore our college, gallery and studio.



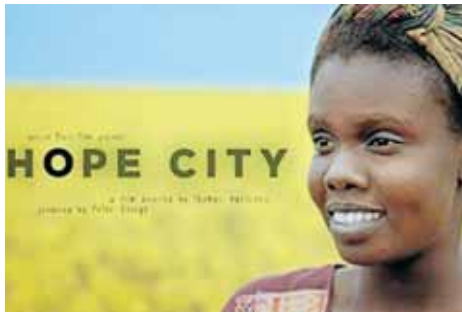
To register, visit psc.edu.au/openday

Photography Studies College (Melbourne) 65 City Road, Southbank, VIC 3006 ☎ 03 9682 3191 ✉ info@psc.edu.au

RTO Code: 0111



EVENTS



HOPE CITY

July 28 - Photography Studies College
Hope City, filmed in Melbourne, had its world premiere at Interfilm - 31st International Short Film Festival in Berlin, Germany. Since then, the film has been screened extensively in festivals around the world. The 15 minute film will be screened, followed by a panel discussion with the director, cinematographer and writers.

www.psc.edu.au



TOWARDS ETERNITY

Sep 3 - Elisabeth Murdoch Hall
Towards Eternity is a musical meditation spanning a millennium: a soulful, joyful tracing of our most ineffable selves. It reveals secrets, yearnings, rapture and ecstasy. Deep listening invites a sense of timelessness. Music creates passageways both out of our earthly state, and into our most human longings.

www.melbournerecital.com.au



HOKUSAI

Until Oct 15- NGV
 Katsushika Hokusai is regarded as one of the most influential and creative minds in the history of Japanese art. His unique social observations, innovative approach to design and mastery of the brush made him famous in Edo-period Japan and globally recognised within a decade of his death.

www.ngv.vic.gov.au



PUSSY RIOT THEATRE - RIOT DAYS

Aug 19 - Playhouse
 Russian feminist punk collective Pussy Riot was propelled into the global spotlight in 2012 when an unauthorised performance in a Moscow cathedral saw three of its members convicted for "hooliganism motivated by religious hatred". They will play on August 19 as part of the Supersense Festival of the Ecstatic.

supersense.artscentremelbourne.com.au

PRODUCERS PANEL - OPEN DAY

Aug 26 - Abbey Road Institute
 The Open Day Producers Panel is ideal for budding producers. The panel features ARIA and Grammy nominated and awarded producers Beau McKee, Alex Braithwaite and Jimi Maroudas, who will share their own experiences in establishing both their careers and reputations within the industry, with a Q&A opportunity.

www.abbeyroadinstitute.com.au

NGV FESTIVAL OF PHOTOGRAPHY

Until Aug 23 - NGV International
 A series of free exhibitions, currently presenting recent photographs by Bill Henson, selected by the artist, and encompassing themes including portraits, nudes, lush museum interiors and transcendent landscapes.

www.ngv.vic.gov.au

SPRING DANCE CLASS PARTY

September 1 - Chunky Move
 Step into spring with Jo Lloyd and Rebecca Jensen's Spring Dance Class Party at Chunky Move Studios. A fee of \$15 applies, and includes one drink. All levels are welcome, and no bookings are necessary.

www.chunkymove.com.au

WAGNER, PROKOFIEV & RACHMANINOV

Aug 13 - Elisabeth Murdoch Hall
 University of Melbourne Symphony Orchestra will perform the canonical works of Wagner, Prokofiev and Rachmaninov at Elisabeth Murdoch Hall in this one-night only event.

www.events.unimelb.edu.au



WESTPAC INDIAN FILM FEST AWARDS NIGHT

Aug 11 - Elisabeth Murdoch Hall
 Celebrate the best of Indian Cinema with an unforgettable night of cinema, glamour and music performances. The event celebrates the best actors, directors and films from India and the subcontinent. The evening includes live entertainment and an awards ceremony with all the biggest stars of Bollywood.

www.melbournerecital.com.au



THE COODABEEN CHAMPIONS

Sep 3 - Playhouse
 Featuring live footy talkback, witty interpretations of hit songs and their much-loved and hilarious brand of footy lexicon, the boys will have all their skills on display and go straight up the guts. This special live show will showcase new material and of course, all the old favourites: Pearl from the Peninsula, Peter from Peterborough, Nige from North Fitzroy and Guru Bob.

www.artscentremelbourne.com.au



DI AND VIV AND ROSE

Opens Aug 12 - The Sumner
 From different classes, from different places, with different experiences and expectations, Di, Viv and Rose would never have crossed paths if they hadn't shared a flat all those years ago at uni. For a while, the laughs bound them together. But surely time, which delivers triumph, disaster and change so unpredictably, will slowly draw these friends apart?

www.mtc.com.au



ANTHONY CALLEA WITH THE MSO

Sep 8 - Hamer Hall
 Acclaimed vocalist and Melbourne's very own Anthony Callea will perform a very special concert with the Melbourne Symphony Orchestra to coincide with the release of his new album, ARIA NUMBER 1 HITS IN SYMPHONY recorded with the MSO.

www.mso.com.au

SOUNDPROOF YOUR EXISTING WINDOWS & DOORS

IF YOUR EXPERIENCING CONSTRUCTION, TRAFFIC & CITY NOISE WE HAVE THE SOLUTION FOR YOU.



No need to replace your windows or doors.

We will install our Secondary Glazed window to your existing Windows and Doors.

Half the price of replacement Double Glazing.

Up to 70% Noise Reduction can be achieved.

Reduce heat loss by 50%

Over 22 years in Business.

Free No Obligation On Site Quotations.



Stop Noise
 ADD ON DOUBLE GLAZING

Watch Our before & After Video Demonstration www.stopnoise.com.au

Call us anytime on **1800 880 844**

Office & Showroom – 15 Industry Blvd, Carrum Downs.

Record City Tower apartment sale

Ray White Southbank has completed the record sale of a four-bedroom City Tower apartment for a staggering \$2,038,000.

The agent responsible for record-breaking sale, Jesse Lorenz (pictured), sold the property to a family who had been interested in securing a property in Southbank for some time.

Jesse had worked with the family to secure their dream home and they finally settled on this expansive City Rd apartment on July 26, which features four bedrooms, three bathrooms and two cars spaces.

Set over two levels, taking up approximately 240 sqm right in the heart of Southbank, the apartment features two massive terraces and breathtaking views spanning Port Phillip Bay, the city, and east towards the Dandenong Ranges.

Jesse currently has an array of properties coming onto the market in the near future. Give him or Andrew Salvo a call on **8102 0200** for a private inspection or to discuss your real estate needs.



ADVERTISEMENT

20 YEARS OF STANDING UP FOR HUMAN RIGHTS



PLIGHT OF THE DARFUR REFUGEES | SUPPORTING NEW NATION OF SOUTH SUDAN | STANDING UP FOR HUMAN RIGHTS IN NORTH KOREA | DEFENDING BAHÁ'Í RELIGIOUS FREEDOMS | SUPPORTING TIBETAN FREEDOM & HOSTING THE DALAI LAMA | MALAYSIAN DEMOCRACY | THE WORLD DEMOCRACY MOVEMENT | SUPPORTING MARRIAGE EQUALITY | FAIR TREATMENT OF REFUGEES IN AUSTRALIA



Michael Danby MP

FEDERAL MEMBER FOR MELBOURNE PORTS

(03) 9534 8126 | Michael.Danby.MP@aph.gov.au

www.danbypm.com | @MichaelDanbyMP

Authorised by M Danby 117 Fitzroy St St KILDA WEST

Helping ensure your amenity

A few months ago I discussed what you can do if you believe a construction site is not complying with its operational and signage requirements.

But what if it is noise - or should I say excessive noise - or noise outside of times we consider acceptable?

Did you know that the Environmental Protection Authority Victoria (EPA) has a responsibility to protect the community from noise pollution?

The EPA defines noise pollution as "sound at a level which is annoying, distracting or physically harmful". Of course what is annoying to one resident may not necessarily be annoying to another and the level of noise can be subjective.

The time of day and the type of noise will also impact on one's attention and tolerance. The EPA has a 24hr hotline to report industrial and commercial noise pollution and you can call them on 1300 372 842 (1300 EPA VIC).

So if workmen at a construction site near you are starting their machinery too early or operating too late, then give the EPA a call. However, if the noise is emanating from a neighbouring apartment or an unruly party, then I suggest calling the Police on 000 (NOT the Southbank station as they will advise you to call 000).

Our Annual General Meeting (AGM) is fast approaching and will be held on October



Southbank residents came together at the Future Melbourne Committee (FMC) on August 1 in oppose a high-rise for 135 Sturt St. Become an SRA member today!

11, 2017. Once again, we will be looking for enthusiastic residents from our community to join and help continue our advocacy work.

You don't need committee experience, but merely the motivation to join the conversation with a few hours each month to help out.

At the end of the month we'll be hosting

our second Southbank information evening at Boyd Community Hub from 6.30pm - 7.30pm on Wednesday, August 30.

It's a free event and you're guaranteed to learn something new about living in Southbank so come along and meet some of your fellow residents. Register your attendance at new-to-southbank.eventbrite.com.au



Tony Penna

Tony Penna is the president of Southbank Residents' Association.

southbankresidents.com.au



Federal Politics

Defending human rights

I've served in Federal Parliament for 20 years and have always been at the forefront supporting international human rights.

The petition I organised for the release of Malaysian Opposition Leader Anwar Ibrahim drew 62 Australian MP's signatures. I led the parliamentary campaign for China's jailed Nobel Peace Prize winner Liu Xiaobo. Iran's persecuted Bahai minority, the African Muslims of Darfur (Western Sudan) and the Uyghur people have all had support in parliament from me.

Perhaps the human rights cause to which I've devoted most effort is the peaceful Tibetan's, whose suffering at the hands of China continues to be largely ignored. It is something that we will look back on in shame in the decades to come.

At the beginning of the New Year, two million Tibetan Buddhists gathered in the Indian town of Bodh Gaya, where Buddha is believed to have attained enlightenment. They came from around the world to receive a major teaching from His Holiness the Dalai Lama. Ironically, Tibetans from Tibet, perhaps the most loyal followers of the Dalai Lama, are banned from attending. For these people seeing their exiled spiritual leader was the dream of their lifetime. The Chinese government crushed their dreams.



President Xi Jinping with his mother who is a Buddhist.

In the months leading up to Kalachakra, as it is called - the Chinese authorities confiscated the passports of many Tibetans. Just days before the event, authorities demanded that all Tibetans who had reached India return home or face severe consequences such as losing one's job, pension or ration cards. 7000 Tibetans had to go back from India. During the 12-day event, the Chinese authorities threatened Tibetans that sharing videos or news articles about the event would lead to arrest and imprisonment.

When it comes to handling the Tibet issue, China is often its own worst enemy. Tibetans

who travelled to India were religious pilgrims - the purpose was religious, but they returned to their home country politicised. A global leader of peace and compassion, the Dalai Lama is loved and revered by millions around the world. This simple Buddhist monk, as the Dalai Lama likes to call himself, is feared by a nation with the world's largest population, the second-largest standing army and the second-biggest economy.

The recent crackdown on Tibetan pilgrims is part of China's intensifying attempt to undermine the Dalai Lama's influence. It is a serious violation of the Tibetan people's freedom of religion. In addition they are not

only restricted from travelling overseas, they also face difficulty in moving freely within their own country.

To go to Tibet's capital, Lhasa, Tibetans from other towns need to carry a full range of identification documents. In contrast, without problems Chinese tourists and migrants from mainland China travel to Tibet. The Chinese government also restricts international tourists, journalists and diplomats from travelling to Tibet.

The international community must condemn the lockdown of Tibet. Just as the Chinese people have open access to Australia, Australians should have access to Tibet. For over two years, the Chinese government has failed to respond to requests by Australian parliamentarians to visit Tibet.

His Holiness the Dalai Lama and Lobsang Sangay, the recently elected representative of Tibetans in exile, appeal for The Middle Way - where Tibetan religion, culture and language be respected as undertaken by the Chinese Constitution.

I call on the Australian government to renew its support for our endeavour to visit Tibet over the term of this parliament.



Michael Danby

Federal Member for Melbourne Ports

michael.danby.mp@aph.gov.au

St Johns Southgate

Home

A single dad by the name of John woke up to the sound of a baby crying. He looked at his phone to see the time. It was 5:15am.

With a blank expression on his face he got up, put on his dressing gown and went to get bubs. Before he'd even made it to the cot, his four-year-old had entered the fray. "Dad, can you make me breakfast? I'm hungry!" "Just a minute, Tyson's crying. What are you doing up, anyway?"

Home can be chaotic.

Retirees, Helen and David, sat in their armchairs on a beautiful spring morning as the sun shone in the window. They each nursed a cup of English Breakfast as they talked about the episode of Midsomer Murders that they'd watched the night before.

Home can be peaceful.

Silvia got home at 7:45pm on a Friday night. She closed the front door behind her, put her bag down on the bench and opened the fridge. All she found inside was a half empty tub of yoghurt - two days past its use-by - and an unopened packet of cheese slices. She went back to her bag and rummaged around for her phone so she could order some takeaway.

Home can be lonely.

Ian got home from work and walked in the front door. He smiled as he heard the sound of his loved ones talking and laughing. "Hello, Dad!" one of the kids yelled, as he walked into the dining room. "Hi!" After quickly kissing his partner on the cheek while they shared a raised eye-brow and knowing smile, he sat down to join the evening meal. Stories of schoolyard intrigue were shared with lots of laughs all 'round.

Home can be joyful.

Sadly, home can also be a place of anxiety, fear, anger and violence.

The word 'home' can mean a lot of things and it certainly doesn't always conjure up thoughts of domestic bliss. But home wasn't even perfect for Jesus of Nazareth.

As an adult, Jesus went back to his hometown and it wasn't a happy

homecoming, it was devastating. So much so, that he found himself unable to perform any miracles. Home should have been a place of refuge and peace, but he went home to find himself scorned.

But Jesus didn't stay there. He moved on. He journeyed on to build a new home - to build a new community known as the church. The buildings we call churches are not the church as such, they are houses of God primarily because they house God's people as they come together in the family home to break bread.

Admittedly, the church is like any other home - imperfect. But the church can help us find a true sense of homely peace because it's built around the everlasting goodness of Jesus. As a spiritual home, the church can, and should, represent something greater even than the loveliest earthly home we might imagine.

For me, coming to church is like coming home. It's not always perfect, but because it's built upon someone who is - namely, Jesus - it inspires me and gives me a glimpse of what a real, true, perfect home can be and will be in eternity.



Tom Hoffmann

Tom Hoffmann is the pastor at St Johns Southgate Church.

www.stjohnssouthgate.com.au



Montague Community Alliance

Understanding our history

In late June early July, I spent time working in two ancient cities that have both undergone and continue to undergo urban renewal.

Belgrade, once the capital of the former Yugoslavia and now the capital of Serbia, is a proud city of approximately 1.5 million people that has withstood extraordinary times. The design of the city is clearly defined with stunning architecture reminiscent of Paris and the Belle Époque of Europe, as well as ancient sites, soviet realism and extraordinary examples of 1970s brutalism.

It has undergone quite specific renewal creating 'New Belgrade' from an underdeveloped area of the city that over many decades has become the central business district. This area has both residential and business buildings and incorporates interesting contemporary and functional design.

The second city is London, which is renowned for its mix of ancient and new, with some of the most stunning contemporary icons (The Gherkin for example) as well as remnants of ancient times and of course the beautiful Georgian terraces of the inner London suburbs. Urban renewal has been a feature of London for many, many years and continues to be so.

One of the things that struck me most in talking to my colleagues in both cities was their sense of place and knowledge of the history of these renewal areas. These colleagues are not architects or urban planners (my work is in the psychology of business behaviour), they are residents and workers who just know about, and are proud of, the history of their cities.

I thought a lot about Fishermans Bend and our homes and businesses here in the Montague Precinct and wondered, how

much do we know about these areas? Could any of us describe the history? Do we know what businesses were here? Who were the first inhabitants? What did our Indigenous brothers and sisters do here?

I am constantly repeating the refrain that Montague is already a vibrant 24/7 precinct, with multiple residents and businesses. It is not a brown field site and our history needs to be uncovered, known and celebrated.

Thank you to Sara Madderson for her fantastic work on the history of Montague and her article in last month's *Southbank Local News*. We hope to continue to bring you more stories and descriptions of the history of the precinct and the legacy from which we are creating the renewal of this already vibrant area.

Over the next few months we will meet and interview some of the locals from the Montague Precinct to learn more about how they feel about their neighbourhood, how they contribute to the area and what their hopes are for the future.

I think it would be great, if, when visitors arrived from elsewhere and asked us about the history of Montague, we can tell them the stories of the area, just as my colleagues did for me in Belgrade and London. Wouldn't that be something...!



Trisha Avery

Trisha Avery is the convener of the Montague Community Alliance.

trishavery@bpca.com.au



St Johns Southgate

Sunday 20 August

9am **Worship with Bach Cantata**
Guest preacher: **Rev Dr Stephen Pietsch**
Australian Lutheran College, Adelaide
Aus tiefer Not schrei ich zu dir BWV38
for 4 soloists, chorus, strings, 2 oboes, 4 trombones and continuo
Sally Wilson, Sally-Anne Russell, Robert Macfarlane, Christopher Tonkin
with Guest Ensemble: La Compañia
8:30am *Cantata in Context*: pre-service talk

Every Sunday

9am Traditional worship with communion
10:30am Sunday School during school terms
11am Informal worship with communion
except 20 August
6pm **Sunday Night at St Johns**
Informal contemporary worship
hosted by Lutheran Students and Friends
The chapel is open daily
for private prayer and reflection

Police Stables - Mounted Branch

For over 100 years, the streets of City South, which later became Southbank, echoed with the clip-clop of police horses.

They were based in the Police Stables building on Dodds Street, a distinctive building that was part of a complex of police buildings that included a hospital, barracks and drill hall.

19th Century Melbourne was a city that mainly relied on horse traffic for transport and delivery of goods. Horse and rider numbers increased in line with Victoria's population, peaking in the early 1900s. Law enforcement was generally horse-based as well, with Mounted Stations throughout the state.

Built in 1912, the red-brick building is a notable example from Federation/Edwardian Period (1902-c.1918) and was part of the complex designed by the chief architect of the Public Works Department E. Evan Smith. The three-sided building, topped with a circular tower, anchors two long wings that included stalls for the horses (up to 50 in its heyday). Saddles and riding equipment hung on the wall. The day's routines included grooming the horses and



maintaining the riding equipment used for patrol, exercise, and ceremonial equipment. For decades, stories were passed down through generations of the Mounted Branch about the ghost that allegedly haunted the stables.

The near-city location of the stables meant that mounted police could quickly get to any event, such as parades or trouble spots in the city and quickly get to Government House. Their role changed as the city became more car-based but they still had an important role to play – and still do, on the frontline

in protests, demonstrations, escorts and searches in remote areas for missing people or escaped criminals. Horses can go where cars and vehicles can't, and a searcher on horseback can see much further than one on foot. One important function that mounted police no longer perform is to guard umpires leaving the ground at VFL football matches, common in the 1960s and 1970s.

For many years the police had their own horse breeding program, supplemented by former racehorses, such as Black Knight, Melbourne Cup winner from 1984. Police

horses need to have the right temperament, ability and height and it takes about two years for a horse to be fully trained. The mounted police officers (predominantly female these days) are highly skilled and undertake a program of regular training, just like the horses. Daily routines consist of grooming, looking after the equipment used for riding, and training. Residents in the area were used to seeing the horses grazing on the lush grass outside the stables and local residents delighted in having a chat with the officers and a pat of the horses.

In 2015, the decision was made by Force Command to re-locate the Stables to Attwood (near Melbourne airport) and to truck them into the city when they were needed. The stables have now been vacated and have been taken over by the Victorian College of the Arts (VCA) and are being transformed into artists' studios and exhibition space. It is great to see another historic building in Southbank receiving a new lease of life - but I still miss the clip-clop of horses through the streets of Southbank.



Robin Grow

President - Australian Art Deco and Modernism Society
robingrow@ozemail.com.au

Letters to the Editor

Credibility issue

Insightful to see Mr Danby use his entire monthly column attempting to explain his office's very basic administration error.

His constant criticism of the NBN rollout has now lost all credibility given he can't even oversee a successful suburb-wide mailout?

Interested onlooker

What about residents?

I've been reading the Southbank Local News since moving into area a few years back and look forward to every new edition; additionally, unlike our council, you are keeping the local residents aware of the new developments, current issues and problems - thank you for doing so.

I would like to ask you to enlighten us (again, due to council's failure) whether our council has considered the following:

- Consideration for the residents due to constant and continuous development relating to noise/air/traffic pollution; and
- Inconvenience caused due to loss of parking spots due to above.
- Since moving into Southbank Boulevard building, I had to put up with:
 - ABC re-development;
 - Current Australia 108 construction;
 - Current construction on the Kavanagh/Power St corner; and soon to commence:
 - Adina Hotel development (Cnr Southbank Boulevard/City Rd);
 - Southbank Boulevard re-development; and
 - Possible CUB development (Cnr

Southbank Boulevard/Sturt St).

Despite numerous reports stating the obvious over-development in the area, Southbank continues to be the centrepiece of development. Some of this development will undoubtedly benefit the local residents, while others will surely impact the quality of living either via limiting resident's privacy (due to buildings proximity) and/or obstruction of access to daylight.

My concern is that I am bound to be exposed to construction noise for at least another five years! This is obviously a substantial period of time.

Does council consider the impact this has on local residents? Is it unreasonable to expect these constructions should commence only after certain period has passed and residents were awarded some peace in the meantime? Or, should all these constructions commence at the same time and finish as soon as possible?

These questions might appear unreasonable to one, however continuous noise, dust and traffic congestion have great impact on those leaving in a very close proximity.

Additionally, I am deprived of a parking spot as recent construction on the corner of Kavanagh and Power Streets has simply taken over a number of parking spots! I am hoping you might be able to provide some answers - I probably wouldn't want them answered by our "dear" Mayor.

Thank you.

Michael Petrovich



Send your letters to
news@docklandsnews.com.au

THE MOST EXCLUSIVE ESCORT AGENCY

Paramour
OF COLLINS STREET

- Dinner Companions
- Social Escorts
- Sensual Ladies

CITY CENTRE
Melbourne's exclusive entertainment service.
Highly recommended for our interstate and overseas visitors.

9654 6011

See real pictures of our ladies at paramour.com.au

CBD - 5 MINUTES TO YOUR DOOR

有很有很美丽的小姐！
请看网址。

たくさんの美しい女性
日本語を話します

Call or book at rsvp@paramour.com.au
MELBOURNE CBD

Southbanker

A sound love of life

From a young age, local Southbank percussionist Kaylie Melville said she had been fascinated by sound.

“My primary school had this xylophone band that would play the Australian national anthem at assemblies,” she said. “I had this bizarre obsession with being in it and just thought it was the coolest thing, which tells you a bit about the sort of kid I was!”

And as she told *Southbank Local News*, the fascination hadn't wavered. She said she still enjoyed discovering new sounds wherever she could...even at the hardware store!

“I now spend a bizarre amount of time at Bunnings looking for objects that make sounds and the staff get really excited when you say I need a metal sheet that can bend in such a way! The hunting for sound thing is really interesting.”

Born and raised in Perth, Kaylie first began playing percussion when she was 10 and her passion for music performance ultimately led her to study in a range of genres at a specialist musical high school.

Kaylie said she moved to Melbourne six years ago to study at the University of Melbourne's Conservatorium of Music (MCM) and quickly found home in amongst Southbank's vibrant arts precinct.

“You're so surrounded by art here, if you're having one of those practice days where you're not feeling terribly inspired you just go for a wander and there's going to be something interesting happening,” she said.

“We're incredibly lucky in this area to be so immersed in art it's just on your doorstep.”

In her six years as a Southbanker, Kaylie's extraordinary musical talents have seen her perform and participate in productions, festivals and courses both in Australia and overseas.

However, she said a major catalyst for much of her success had been discovering the innovative work of Speak Percussion – an internationally acclaimed leader in experimental and contemporary classical music.



Having worked with Speak professionally for the past three years, Kaylie has been an integral part of helping the group continue its efforts in redefining the potential of percussion.

“I remember the first time I saw Speak and I was just so excited by what they were doing,” she said. “They play a fair bit of fairly heavy virtuosic existing repertoire for percussionists but they also make a lot of their own work.”

“A lot of it is also with objects that you wouldn't normally look at as instruments, which is a lot of what we're doing in this show.”

Her next performance with Speak

Percussion, Assembly Operation, manufactures high quality sounds by crunching and grinding low worth goods ranging from electronic toys and traditional objects to packaging and paper!

“It's taking this kind of simple everyday object and really testing what you can do with it sonically and I just find it so satisfying on so many levels,” she said.

“It's kind of that intellectual challenge of what can be done with this thing that I see all of the time but never thought of as an instrument. It's also just because the sounds are so beautiful.”

Alongside fellow Speak Percussion performers Eugene Ughetti and Matthias

Schack-Arnott, the show will see collaboration with performance maker Clare Britton and visual artists Cyrus Tang and Jia Jia Chen.

Conjuring surreal reflections on mass production through a series of dark video sequences and minimalistic set design, Kaylie said the engaging 50-minute show would have a strong visual element to complement the amazing sounds.

Kaylie will perform with Speak Percussion for Assembly Operation from September 5 to 9 at Arts House, 521 Queensberry Street, North Melbourne. For bookings and more information visit artshouse.com.au

Pet's Corner



Doggie Dollar

By Chelsea Cucinotta

Meet local residents Charlton Wang and his 8-month old French Bulldog Dollar. Dollar has been living with Charlton and his wife now for five months, and they love having him around. In fact, when they first saw little Dollar, they knew they had to have him.

“My wife has always loved dogs so when we were looking for a pet and saw Dollar, we thought he was too cute not to buy.”

Charlton describes Dollar as a very well behaved dog, who is playful with dogs and humans alike.

“Dollar gets along well with all of the other dogs. He's very friendly and loves to play with his best dog-friend Diandian,” Charlton said.

What does Dollar do when he is not sleeping (which he apparently does a lot of) or eating ribs? Charlton says that Dollar loves to run around and chase after birds.

Charlton walks Dollar at least three times a day and enjoys passing through the city to the many parks and gardens that Melbourne has to offer.

“We go to Flagstaff Gardens everyday at around 5pm, as there are so many other dogs there at that time. It's always full!”

We Live Here

Flammable cladding: residents ignored

The Victorian Government Cladding Taskforce examining flammable cladding does not include a key stakeholder group – the strata owners that would end up having to manage any remediation works.

We Live Here, as the state's major residents' group representing more than 200 apartment buildings, says owners' corporations need to have a voice at the table.

More than one million people in Victoria live in strata buildings, which is about 25 per cent of all people in the state, and We Live Here already represents some of the largest buildings.

We Live Here is calling to be included in the Victorian Cladding Taskforce, which is examining non-compliant cladding following the Grenfell Tower tragedy in London.

There are fears the dangerous material could be present in apartments across the city, with a similar material contributing to a fire in a Docklands building in 2014.

We Live Here is the largest group representing people that might be at risk, and if owners' corporations can't be individually included in the process, We Live Here should be.

The co-chair of the taskforce, former Labor deputy premier John Thwaites, has put on the record that there's widespread non-compliance of the building code across Australia.

As residents, we are the ones at risk, and we are going to be involved in the fix one way or the other, so we should be consulted.

The Victorian Government says its taskforce will make recommendations to improve compliance and enforcement of building regulations, to better protect the health and safety of residents.

We Live Here has been trying to work with the government to improve health and safety for residents in Victorian apartments for two

years.

Our group was formed by residents to fight the rapid, unregulated rise of short-stay accommodation in apartments, but our issues have now grown well beyond that.

It's time the government started looking at owners' corporations as policy partners instead of simply people to be regulated.

Airbnb escapes tax time crackdown

Commercial short-stay companies like Airbnb will deprive Victorians of more than \$14 million in unpaid GST this year.

Airbnb, and similar operators, only collect GST on the 5 per cent to 15 per cent "service fee", rather than the entire booking cost. This means the state misses out on up to 95 per cent of the GST applicable under current legislation.

But conversely – or perversely – this year "hosts" will pick up an extra bill, with the Australian Tax Office signalling a tax crackdown on "hosts".

It's hardly fair that Airbnb gets out of paying millions in GST, while mum and dad hosts who simply rent a room, are not only subject to income tax, but actually being targeted by the tax office.

How on earth can a person renting out a room in their house be considered to be running an income-producing business, while on the other hand the multinational rental company doesn't have to pay its fair share of tax?

Victorians are missing out on millions of dollars every year, while Airbnb's profits continue to grow, and that's where the focus should be.

Airbnb alone had 651,000 guests last year and grew at a rate of 116 per cent. It's only

fair that legislation is updated to recognise the rise of this unregulated industry, so Airbnb pays its share, along with other overseas companies.

Airbnb admits other countries require the company to collect GST on the entire booking cost, so why isn't it happening here?

The industry also avoids commercial rates from being imposed by local councils, by relying on their land use activity being classified as a residential activity.

Come on. Airbnb is not a residential activity. It's a business activity and a loud, disruptive, unregulated and unfair one at that!

A parliamentary committee examining the commercial short-stay industry heard a range of submissions, calling for Airbnb, and similar overseas companies, to pay GST and other taxes.

The Committee has also made a series of recommendations to the Victorian Government, including that it:

- Considers that the current proposed legislation is unfair to residents and should be reworked;
- Works with Victoria Police to examine safety issues in residential complexes with short-stay activity;
- Works with Victoria Police to consider establishing protocols to manage violent and disruptive incidents;
- Reviews the regulatory imbalance between the short-stay and traditional accommodation sectors; and
- Investigates costs and benefits of introducing a registration and compliance framework for commercial-residential

short-stay accommodation (where properties are listed as short-stays for more than 90 days).

We Live Here is a growing movement of residents from across Victoria, dealing with significant detrimental impacts due to the rapid, unregulated rise of the commercial short-stay industry.

The concerns relate to safety and security, higher maintenance costs due to increased wear and tear, and disruption through "party houses".

Clearly, the government needs to act on these concerns and bring legislation into line for this massive industry. We need a solution which puts residents, businesses and the tourism industry on a level playing field.

Ensuring these giant overseas companies pay their fair share of tax on the millions they make in Victoria, is just one of many issues that require urgent attention when it comes to the commercial short-stay industry.

Campaign donations

As a not-for-profit organisation, donations from individuals and buildings keep our campaigns going. To register as a supporter of We Live Here or to make a donation please visit our website at welfarehere.net.

You can also reach us at campaign@welfarehere.net.au. We Live Here members can make a presentation to your owners' corporation committee upon request.

We welcome your comments and feedback, and invite suggestions for topics you would like us to address in this column.



www.welfarehere.net
emails to campaign@welfarehere.net

Owners Corporation Law

A siren song calling for fair play

In the middle of the day a few weeks back, and in the midst of my busy professional life running a legal practice in this increasingly complex area of law, I received a phone call that stopped me in my tracks.

It was a call from a locum, ringing in on behalf of an owners' corporation (OC) manager that I was dealing with on a few matters for various clients.

The locum explained that the OC manager had gone missing. No one had heard from him in a week and the police were involved. The whole office where he worked was in shock.

In my experience, the OC manager was a

great bloke. He was professional, down to earth, committed and caring – all of the right qualities for a successful manager.

It occurred to me, having re-read some of the more recent email correspondence between that manager and his clients over the weeks and months leading up to his disappearance, that the workload was becoming an issue.

Cracks were appearing, tempers were fraying and you could see the unrealistic expectations being placed on both this manager and the clients.

Mental health issues in the professional industries such as law and accounting are getting a lot of attention and media coverage these days, and for good reason. But mental health issues amongst strata professionals are not well-ventilated, and this needs to change.

The strata industry is still in its infancy in Australia, and in my view is terribly unsophisticated when it comes to risk

management.

Directors of strata companies can make a small fortune in this industry, but the business model is based on loading up young and often inexperienced managers with huge portfolios of buildings and leaving them to sink or swim.

To compound matters, owners and committee members (particularly new ones) are not clear on the roles and boundaries between what an OC manager can and cannot do for an OC. This leads to unrealistic expectations that cannot be met and an erosion of confidence in the manager.

Typically, managers work very long hours, from the time they arrive in the morning (usually greeted by dozens of emails and phone calls) until late at night after they drive home from meetings. There is often not a lot of time left over for family and loved ones.

By its very nature, having a work and life balance while working as an OC manager

will be difficult to achieve and the manager knows and accepts that comes with the territory, but overall the industry does need to improve its act. Unfortunately, the macro answer is for fees to be raised across the board – strata companies need to devote more resources (through the smarter deployment of staff and through investments in technology) to improve efficiency and output.

OC managers are tasked with administering hundreds of millions of dollars of property on behalf of owners, and mistakes will continue to be made until strata companies modify their business model.



Tom Bacon

Tom Bacon is the principal lawyer of Strata Title Lawyers.

Tom@stratattitlelawyers.com.au

SKYPAD Living

Safe and secure in our vertical villages

Safe City, Liveable City, EcoCity, Resilient City, Smart City, Knowledge City, Compassionate City – our Melbourne is a multi-themed and highly-considered metropolis!

Last month, for instance, Melbourne played host to the international EcoCity World Summit, which had as a theme Changing Cities: Resilience and Transformations – and aimed to “highlight the need to deploy expert knowledge to make cities resilient in the face of rapid change”.

Not to be left out, Brisbane entertained those attending the Liveable Cities conference, which was closely followed by the companion conference, Safe Cities.

And being so well discussed, might we vertical dwellers, being a new and growing breed of city resident, feel assured that our issues are well known?

Having attended the recent Safe Cities Conference, I can say that high rise living was not a particular area of focus, with more attention given to topics such as the “night

economy” and the need to “get it right” when managing events to attract domestic and international tourists, businesses and employees. We, city residents, were notable by our absence.

However, there are a range of safety – and security – issues confronting vertical dwellers. And, as I have been informed, there is a difference between safety and security. Broadly speaking, safety is more about protection from unintended incidents or accidents and is more concerned with health and wellbeing. Security, on the other hand, is more about protection against intended incidents that occur as a result of deliberate and/or planned acts and includes malicious and criminal incidents.

So, what are the current safety and security issues for vertical dwellers?

Unsurprisingly, on the safety front, many issues relate to apartment design and their impact upon occupant health. For instance, heat stress inside apartments was identified as a growing issue, most especially for west-facing apartments. The *Living Well – Apartments, Comfort and Resilience in Climate Change* study (conducted by University of Melbourne) looked at apartment performance in “free running mode” (ie without air conditioning). Its finding was that most of our city apartments

would turn into “ovens”.

But if you want a real scare, Alan March (Associate Professor Urban Planning, University of Melbourne) is your man. Speaking earlier this year at the HighRise Expo, Professor March challenged high-rise dwellers to “imagining the worst” – fire, power outage, water system breakdown, heatwave, terrorism, social unrest, major storm, pandemic and business breakdown. He was not overly positive about how long we could continue to live in our high-rise apartments if Melbourne experienced one (or more) of the foregoing. Without power or water, things will get very unpleasant very quickly. He asked: “Do our buildings have an emergency plan?” and “How much individual capacity did each of us have to last unaided?” He suggested only a few days – and then proposed that we each use “resilience thinking” (doomsday prepping for vertical living!).

In regards to high-rise security, the issue of tailgating continues to be of concern, including pedestrians tailgating (ie the following of residents into buildings). Interestingly, one growing reason for this is short cutting.

As our apartment buildings become better connected through linkways, some people are seeking out these quicker routes

by transiting through resident buildings. I know of one apartment building where the employees of nearby businesses routinely “cut through”, preferring to use the residents’ lifts rather than the external stairs. Also growing in popularity (regrettably) is mail theft, which has had a boost courtesy of our short stayers. The issue here is that once people have access to your building, this also means they have access to resident-only mail rooms.

What to do?

Suggestions include using the Internet of Things so that we can better know what is happening inside our buildings (both for safety and security matters). Perhaps this is where our “smart city” people can talk to our “safe city” people so our vertical villages can be part of a more resilient city?

If you would like links to the research or organisations mentioned, please visit and like SkyPad Living on Facebook.



Janette Corcoran
Apartment living expert
<https://www.facebook.com/SkyPadLiving/>

SKYPAD
LIVING

Health & Wellbeing

Injury, see your GP and be your best!

Injury

Injury, discomfort and pain are things that we all despise. To move freely, effortlessly and pain-free is a wonderful feeling (often taken for granted) and this not only helps with our everyday movement but helps us mentally feel alive and well.

For many though, chronic pain is something that has to be dealt with on a daily basis. For others, it may be some form of acute injury that sets them back for a period of time. What I encourage anyone that has any form of injury or endures pain and discomfort is to seek the help of a specialist. Many of us elect to try and push through and save money or time and instead hope that either the pain or injury will go away or that we can push on through it.

What price though do we put on feeling great and moving pain-free? Our bodies are finely tuned and if we let things fester or go unchecked, sure we may get by but our body will adapt and potentially lead to postural imbalances and more ongoing pain and discomfort.

Perhaps it may be time to book in and see one of the following - GP, Physiotherapist, Chiropractor, Osteopath, Exercise Physiologist or Personal Trainer. If you need help with finding a good one, get in touch!

See your Doctor

When was the last time that you took the time out of your busy schedule to see your GP? There is a saying that “you don’t know



what you don’t know” and many of us let our health go unchecked especially when it comes to some simple tests like our bloods, blood pressure and even our mental wellbeing. Seeing a GP regularly is crucial to keep you on track to optimal health and wellbeing. Personally, I think that everyone

should make a trip to see their GP every six months. Men are especially bad with regular check-ups with their doctor and there are also many women that could perhaps benefit from more regular visits too. Do me a favor and check when your last visit was and if it has been a while make an appointment!

Be your best!

Life is increasingly going by at a faster rate. There are so many more options available to us than there were 10 or 20 years ago and many of us are getting caught up in the ‘noise’. We are often failing to live in the now and instead turn to social media and then by the time we look up, we’ve missed out on so much of the now.

What I like to help people do is strive to be the best they can be. Time is a very valuable commodity and many of us waste it, holding us back from being the best that we can be. Are you giving yourself the best opportunity for success with everything in your life? Are you spending enough time getting the sleep you require? Are you focusing on getting the most out of your career? Are you doing all that you can to be healthy through exercise and nutrition?

These are all vital parts of being the best you can be and I ask you to take a moment to reflect. Are you happy with where your life is heading or could you take steps to address it and make changes? Go on, be your best!



Justin Moran
Justin Moran is the Owner of Just In Time Personal Training.
www.justintimept.com

New Southbank Showroom

King Living is excited to open the latest furniture Showroom in Southbank, on the ground floor of Melbourne's iconic Eureka Tower at 80 City Road, Southbank.

From humble beginnings at Sydney's weekend markets to Australia's most awarded furniture company, King Living is this year celebrating 40 years of design, innovation and international success. Since the company was established in 1977, company founder, King Living's team of in-house designers, have always strived for the best design solution; spending hours on research and development and in doing so, achieving major milestones for Australian industrial design.

In particular idea to utilise an engineered steel frame supported by King Living's Postureflex® Seating System, similar to that found in the seats of the world's greatest motor vehicles, put King Living at the forefront of furniture design.

Innovation has always been at the heart of King Living, and this has manifested most recently with the launch of Integrated Touchglide® Technology and wireless charging tables available with selected designs.

In 2014, King Living embarked on expanding internationally with new Showroom openings in New Zealand and Singapore. Meanwhile, existing showrooms in Australia are constantly

being upgraded with the latest technology to make furniture shopping even easier.

Four decades later and King Living is still a family owned and run Australian company, proud of its past and excited about its future.

Now with 17 stores and employing 700 staff internationally, King Living furniture is enjoyed by people all over the globe, appearing everywhere from historic country homes to urban studio apartments.

Products featured:

Jasper (bottom left): King Living's iconic multi-award-winning Jasper sofa, featuring the ultimate in comfort and flexibility.

Delta III (top): Perfect for apartments and compact living rooms, the real advantage of the Delta III is its ability to be reconfigured into many different settings. Nice and close for relaxing, expanded for entertaining or even a luxurious bed for two.

King Cloud III (bottom right): The ultimate recliner lounge, King Cloud III features integrated Touchglide® Technology that allows you to recline and relax with a simple hand swipe giving you just the right level of support for full body comfort.

Learn more at kingliving.com.au



Enjoy winter at Bluetrain

Bluetrain, one of Southbank's oldest culinary favourites is serving up some delicious offerings to all this winter.

In addition to Bluetrain's tantalising drinks menu, featuring a broad selection of rotating beer taps, wines, spirits and cocktails, Bluetrain has also just launched its new winter menu! With the reinvention of old Bluetrain classics such as the dahl split lentil curry and eggplant chips, the new winter menu is a perfect blend of simplicity and flavour.

As usual, Bluetrain has something for everyone featuring an array of delightful dishes for both meat and veggie lovers alike! For those after something to really sink their teeth into, the Super Mario burger (featuring a crumbed lasagne), the marinated lamb souvlaki pizza or the GSP platter for two is guaranteed to satisfy. While for the

vegetarians or those seeking something a bit lighter, look no further than the spiced veggie moussaka, Nacho Libre burger or the tofu tacos.

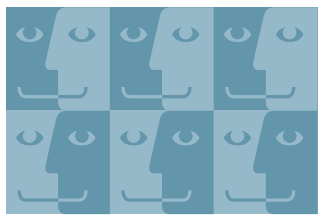
Come in for lunch Monday to Wednesday from 11am to 3pm to enjoy any of Bluetrain's boutique burgers or pizzas for \$20, with a complimentary glass of wine, pot of beer or soft drink.

Happy Hour runs from Monday to Friday, 4pm to 7pm, while Thursdays its 241 Cocktails from 5pm. Enjoy the new bar menu which now includes 4 flavours of loaded fries!

Mention this article and receive 10 per cent off your next bill. Happy dining!

bluetrain.com.au





FACES OF SOUTHBANK



CHLOE HONIG, 19, MUSIC THEATRE STUDENT, FROM SOUTHBANK

"I always order an iced coffee as I prefer cold drinks over hot ones. I'm not a huge fan of coffee, but being a student means that I need it to survive the long days!"



LEE GOODSON, 43, FROM THE WESTERN SUBURBS

"I usually order a latte. I order it for the taste, and not for the caffeine fix like a lot of people do!"



MAX RAE, 19, MUSIC STUDENT, FROM RESEARCH

"I order a long black with two sugars. I love the taste of dark, bitter coffee rather than the milky, creamy type. It definitely wakes me up in the morning, which is great for when I'm studying."



DOMINIC RIVERA, 21, FROM SUNSHINE NORTH

"I order a hot chocolate as I don't like coffee. I think that not drinking coffee makes me look younger than the other students in my class."



SHANNAN LAPHAM, 22, FROM ALTONA

"My go-to is a long black. Believe it or not, I used to hate coffee, but then I lived in Sweden for 12 months and began to love it. Now I'm addicted!"



JENNICE CHIN MEI LEE, 19, FROM MELBOURNE CBD

"I love cappuccinos! You can really taste the quality of the coffee as there isn't too much milk. It also isn't as bitter as an espresso, so it's the best choice."

Question:

What is your coffee order and why?

SOUTHBANK SUDOKU

A variation of Sudoku, with the letters SOUTHBANK replacing the numbers.

The rules are the same as regular Sudoku, each line of the must contain the letters 'SOUTHBANK' as must each 9-square box. This Sudoku is MEDIUM!
Good Luck!

Last month's Sudoku solution

U	S	T	K	N	O	B	A	H
O	K	A	T	B	H	N	S	U
H	N	B	A	S	U	O	T	K
B	U	S	O	H	A	K	N	T
A	T	O	U	K	N	S	H	B
K	H	N	B	T	S	A	U	O
S	A	K	H	O	T	U	B	N
N	B	H	S	U	K	T	O	A
T	O	U	N	A	B	H	K	S

	T			K			A	
					B			
O				U	H	S		B
	B	H	O			N		A
N		A			S	O	K	
S		U	B	H				K
			A					
	K			S			O	

Top Class

of Collins Street

open 24/7 |
sexy & wild |
genuine escorts |

PCA113E

www.topclassofcollinsstreet.com.au

Call 03 9654 6351

2017 WHAT'S ON COMMUNITY CALENDAR

JAN | FEB | MAR | APR | MAY | JUN | JUL | **AUG** | SEP | OCT | NOV | DEC |



INNER MELBOURNE LIFE ACTIVITIES CLUB

Meeting on selected dates and various locations, IMLAC takes in the city's parks, its culture, fabulous eating options as well as festivals, galleries and concerts.

www.life.org.au/imlac or call Dianne 0425 140 981



TUESDAYS @ BOYD - \$5 DONATION

BOLLYWOOD WORKOUT

Inspired by the high energy music from Indian/Bollywood films these workout sessions are focused on building and developing your dance technique and most importantly, having tonnes of fun!

TUESDAYS - THURSDAYS & SATURDAYS
CHUNKY MOVE DANCE CLASS
Mondays to Thursdays and Saturdays at 111 Sturt St. Chunky Move dance classes are the perfect way to unwind, get fit and improve flexibility and strength.
www.chunkymove.com



TUESDAYS
LAUGHTER YOGA @ BOYD
Laughter Yoga is a unique concept that allows you to laugh even when you least feel like it and is ideal for all ages. Sessions are at Boyd Community Hub, Assembly Hall each Tuesday at 6pm.



MONDAYS @ BOYD
JUSTICE OF THE PEACE
Local Southbank JP Atilla Akguner offers two hour sessions every Monday morning from 11am until 1pm at the Principal's Office at Boyd. To book in a time contact: atillaakguner@gmail.com



AUGUST 19 @ BOYD
SUSTAINABILITY GROUP
The Boyd Sustainability Group meets monthly to discuss local sustainability initiatives. Will meet from 11am to 2pm this month. Contact Nadine Ford: nadine.ford@melbourne.vic.gov.au

THURSDAYS 2PM - 4PM @ BOYD
GYMBAROO FOR BABIES
Programs led by trained teachers using specialised equipment and activities to stimulate physical, psychological and social development. To book contact: admin@gymbarooalbertpark.com.au

MONDAYS @ BOYD
ZUMBA
For an optional donation enjoy a pilates class between 7pm and 8pm. For more info contact Catalina: partywithlatinas@gmail.com



FRIDAYS 8AM - 9AM @ BOYD
COMMUNITY TAI CHI
WULONG TAI CHI offers you the opportunity to enhance your strength, balance, flexibility and well-being in a friendly, supportive environment. All welcome. lily@wulongtaichi.com.au



SUNDAYS
ARTS CENTRE MARKET
Meet over 80 of Victoria's finest artisans first hand. Discover how these unique artworks are made, chat directly about the products, inspirations and techniques.
www.artscentremelbourne.com.au

WEDNESDAYS @ BOYD
FREE WALKING GROUP
Join local fitness experts JustInTime as they lead a 'not just walking group' for Boyd walkers. The program runs on Wednesdays from 9.30am to 10.30am.



SATURDAYS @ BOYD
COMMUNITY YOGA
The free class is gentle yet dynamic in synchronising active movements with active breath. A perfect start for beginners and older people alike. Bookings essential. beishen.happinessproject@gmail.com



AUGUST 30 @ BOYD
SOUTHBANK INFO NIGHT
Hosted by Southbank Residents' Association, a free event for residents to meet their neighbours and learn about the area. To book your place: new-to-southbank.eventbrite.com.au

TUESDAYS
SOUTHBANK ROTARY
Rotary Club of Southbank meets weekly for dinner on most Tuesday evenings throughout the year at Federation Square. Visitors are always welcome.
www.southbank.org.au

SECOND TUESDAY OF EVERY MONTH
LIONS CLUB
The new Melbourne City Southbank Lions Club hosts its monthly meetings at Boyd from 7pm until 8pm. All welcome. Email chengji1214@gmail.com for more information

FIRST THURSDAY OF EACH MONTH
SUNRISE PROBUS CLUB
Over 50, living in Southbank and want to join our vibrant club for activities, events and friendship? Meet at Library at the Dock at 10am. Contact Verna on 0407 065 910. MSPC.docklands@gmail.com

BUSINESS DIRECTORY

BROTHEL

皇宮 Studio 466

美女如雲

466 City Road South Melbourne

near Crown Casino, Tram 96, City Road Stop

Call Now **96964666**

www.studio466.com.au

SWE4215BE

CAFE

Lindt

CHOCOLATE CAFÉ

Find a café at lindt.com.au

FESTIVAL OF OFFERS

INDULGE THIS WINTER

CARPET

Ph: **9761 4451**

**CARPET TILES FROM \$1.10 EACH
EASY AND AFFORDABLE
ENVIRONMENTAL**

McMATS CARPET MARKET

FACEBOOK | GOOGLE McMats

Cheap delivery available | Bayswater North

CHURCH



St Johns
Southgate

20 City Road Southbank
Telephone 9682 4995
www.stjohnssouthgate.com.au

ESCORTS

www.paramour.com.au

SWA113E

(03)9654 6011

Melbourne's Finest Escorts
can be at your door in 5min
as we're located in the CBD

Paramour

EVENTS

Aerial by food&desire

17 Dukes Walk, South Wharf

03 8646 6000

www.foodanddesire.com.au/aerial

FUNCTIONS

St Johns
Southgate

Facilities hire Beautiful venue for
weddings and memorial services
Concert venue with excellent acoustic
and comfortable seating Spacious
function room Meeting rooms Kitchen

20 City Road Southbank
Telephone 9682 4995
www.stjohnssouthgate.com.au

FURNITURE

KING
LIVING

New and exciting Showroom
80 City Road, Southbank VIC 3006
Ph. 8633 8666 | KINGLIVING.COM

GYM

JUSTINTIME
PERSONAL TRAINING

Mobile personal trainers that
come to you and save you time

Justin Moran justintimept.com
0411 798 934 justin@justintimept.com

HAIR & BEAUTY

RoopRani
herbal beauty salon
HAIR & BEAUTY SPECIALISTS

P5 SOUTHGATE COMPLEX - PH 9686 6504
WWW.ROOPRANI.COM.AU

HANDYMAN

**SOUTHBANK
PAINT RIGHT**

224 Normanby Street, Southbank
T: 9272 7600
www.southbank.paintright.com.au

HEALTH

BROAD BEAN
ORGANIC GROCER

CERTIFIED ORGANIC FRESH PRODUCE

Shop 3, 26 Fanning St, Southbank

[f / broadbeanorganicgrocer](https://www.facebook.com/broadbeanorganicgrocer)

PETCARE

Port Melbourne Veterinary Clinic & Hospital



FRIENDLY PROFESSIONAL
PET HEALTH CARE

Open 7 days a week
Mon-Fri 8am-7pm
Sat-Sun 9am-5pm

For advice & appointments Ph: 9646 5300
www.portmelbournevet.com.au
109 Bay St, Port Melbourne

PHOTOGRAPHY

photography studies

psc.edu.au/courses

9682 3191

Australia's No 1 Photography College*

*Winner National Photography Industry AIPP Award for Excellence in Photography Education
2014, 2013, 2012, 2011

REAL ESTATE

CityResidential
REAL ESTATE PTY LTD

T: 03 9001 1333

818 Bourke Street,
Docklands
VIC 3008

SALES Glenn Donnelly m: 0419 998 235

LEASING Lina D'Ambrosio m: 0430 959 851

www.cityresidentialbourkestreet.com.au

SELLING | LEASING | PROPERTY MANAGEMENT

LUCAS

lucas real estate
luxury apartments for sale and lease
newquay | 1/401 docklands drive docklands
yarras edge | 62 river esplanade docklands
03 9091 1400 | lucasre.com.au

Ray White.

Ray White Southbank
111 Clarendon Street, Southbank 3006
P:(03) 8102 0200
F:(03) 8080 3284

RESTAURANT



Southgate, Southgate Complex,
UR3/3 Southgate Ave, Southbank
Phone: (03) 9696 0111
www.bluetrain.com.au

BLUETRAIN
multicultural meeting place



Shop M4/9 Mid Level Southgate Complex 28
Southgate Ave, Southbank
Ph: 9690 6205
Menu: enagreekstreetfood.com.au

MY GOODNESS

PIZZA & BURGERS

check us out for a delicious range of
pizza, burgers and much more.

T 9696 3962

Open from 11am till late
186 City Road Southbank

NEW to
SOUTHBANK

mygoodnesspizza.com.au

LA CAMERA
SOUTHGATE

www.lacamerasouthgate.com

p. 9699 3600

e. eat@lacamerasouthgate.com

SCHOOLS

www.haileybury.vic.edu.au



HAILEYBURY

KEYBOROUGH BRIGHTON BERWICK CITY BELLING

SERVICES

Stop Noise

ADD ON DOUBLE GLAZING

NOISE REDUCTION SPECIALISTS

1800 880 844

INFO@STOPNOISE.COM.AU

WWW.STOPNOISE.COM.AU



SUPERMARKET

FOODWORKS

Works for me!

180 City Road, SOUTHBANK
P: 9686 1561

SOUTHBANK local NEWS

If you are not on this list then email
advertising@southbanklocalnews.com.au
or phone 8689 7980
to discuss how you can get
on this list for FREE!!



3210/241 City Road, Southbank

2 2 1

- Reverse cycle heating and cooling
- Quality bathroom fixtures
- Tiled kitchen features stainless steel appliances, including dishwasher

Contact Agent

Michael Pastrikos
0404 282 864
Sebastian Karagiannis
0488 042 261

raywhitesouthbank.com.au



351/183 City Road, Southbank

4 3 2

- 4 bedrooms
- 3.5 bathrooms
- Split level
- Private garage with 2 car spaces
- 240m2 (approx)

PENTHOUSE SOLD
\$2,080,000

Jesse Lorenz
0403 142 119

raywhitesouthbank.com.au



217/108 Flinders Street, Melbourne

1 1 1

Designed by multi award winning architect Fendor Katsalidis. This boutique complex boasts an attractive sculptural façade with inviting internal courtyard, residents' lounge.

Contact Agent

David Barber
0437 980 091

raywhitesouthbank.com.au



806/52 Park Street, South Melbourne

1 1 0

- Close to Public Transport
- Low Outgoing Costs
- High Yield Returns
- Easy Access to Botanical Gardens

Contact Agent

Michael Pastrikos
0404 282 864

raywhitesouthbank.com.au



2111/22 Dorcas Street, Southbank

1 1 1

- Practical and Large Sized Apartment
- Full Size Kitchen
- Car Park on Title
- Plenty of Storage Throughout

Contact Agent

Michael Pastrikos
0404 282 864

raywhitesouthbank.com.au



2003/50 Haig Street, Southbank

2 1 1

- Property vacant and ready
- North East Facing and full of natural light
- Quiet and convenient Southbank Location
- Large Terrace

Contact Agent

Jesse Lorenz
0403 142 119

raywhitesouthbank.com.au



1312/283 City Road, Southbank

1 1 0

- Close to public transport
- Crown Casino right on your doorstep
- Walking distance to South Melbourne
- Gym, Pool, Spa and Sauna

Contact Agent

Jesse Lorenz
0403 142 119
David Barber
0437 980 091

raywhitesouthbank.com.au



1201/33 Clarke Street, Southbank

1 1 0

- One year old building
- Close to public transport
- Crown Casino right on your doorstep
- Walking distance to South Melbourne

Contact Agent

David Barber
0437 980 091
Jesse Lorenz
0403 142 119

raywhitesouthbank.com.au