

The voice of Southbank, South Wharf & Montague

# SOUTHBANK Local NEWS

■ Council wobbles on Aus Day

Page 4

■ Sturt St up for sale

Page 7



■ A tour of the Arts Precinct

Special feature pages 12 - 13

■ Melbourne Arts Festival

Arts Precinct Supplement



## Council laments Crown delay

By Sean Car

*The City of Melbourne's planning chair Cr Nicholas Reece says there is only so long the council can tolerate Crown Resorts and Schiavello's delay in upgrading Queensbridge Square.*

His comments come after Crown Resorts released its annual report last month, which reveals its six-star hotel and residential development One Queensbridge still remains subject to financing.

The company, along with joint-venture partner Schiavello, received approval for what would be Australia's tallest tower from the state government in March 2017 as a project of "state significance".

Given exemption from the normal planning process under planning scheme Amendment C310, Crown and Schiavello's promised delivery of a \$100 million "public benefits package" was what helped get the controversial project over the line.

The package contained long-awaited upgrades to Queensbridge Square, Sandridge Bridge and Southbank Promenade - works all previously flagged by the City of Melbourne.

"There is only so long the City of Melbourne can tolerate a delay to the upgrade of Queensbridge Square," Cr Reece told *Southbank Local News*. "We think the size of this development is inappropriate and we're disappointed that works to Queensbridge Square are being held up."

"The upgrade of Queensbridge Square is an important part of the rejuvenation of Southbank. Given this is one of the most densely-populated parts of the city, we are

keen to get on with these works."

Conditions in Amendment C310 state that the developer must start construction within two years from the date of the project's gazettal. It also says the development must be completed within five years.

With the March 2, 2019 deadline looming, it is now all but certain that Crown will need to request an extension from the state government.

Given the delay, *Southbank Local News* asked Crown Resorts if it would be willing to commit to delivering the upgrades to Queensbridge Square and Southbank Promenade ahead of starting construction, to which it replied: "Crown remains very supportive of the project and the start of the project is related to Crown finalising the project financing and various agreements as disclosed in our full year results."

The council's deputy planning chair Cr Rohan Leppert said both major parties should rule out a post-election approval of a time extension unless they were willing to engage the public in the process.

"The onus is on Crown/Schiavello to request another planning scheme amendment to extend the expiry date in the incorporated document if that's what they want to do."

*Continued on page 2.*



## Saving Shearwater

*City of Melbourne Cr Nicholas Reece, ExxonMobil Australia chairman Richard Owen and Central Equity chairman Eddie Kutner teamed up last month to save Southbank's renowned Shearwater sculpture. Find out how they did it on page 5.*

**Broad Bean**  
ORGANIC GROCER



EAT. DRINK. SHOP. ORGANIC

26 Fanning Street, SOUTHBANK



**HYPERLOCAL**  
NEWS

Suite 108, 198 Harbour Esplanade  
PO Box 23008 Docklands 8012  
Tel: 8689 7980 Fax: 9602 2929  
www.southbanklocalnews.com.au

Editor: Sean Car

Publisher: Hyperlocal News Pty Ltd  
ABN: 57623558725

Tel: 8689 7980 Fax: 9602 2929  
advertising@southbanklocalnews.com.au

Reader contributions are welcome.  
Please send articles and images to  
news@southbanklocalnews.com.au

Deadline for edition 80 is November 11.

**CONNECT**

Keep up to date with local news & events.



Follow us on Twitter  
@SOUTHBANK\_News



Like us on Facebook  
Southbank Local News



Like us on Instagram  
SouthbankLocalNews



A render of Crown and Schiavello's proposed upgrade of Queensbridge Square.

## Council laments Crown delay

Continued from page 1.

"The cynic in me suspects that Crown will wait until immediately after the state election to request an extension."

"Given how important an issue this is, Crown's intentions should be made clear and Minister Wynne and Shadow Minister Davis should both be ruling out any post-election approval of a time extension hidden from public scrutiny."

Former City of Melbourne councillor and Alliance for Gambling Reform member Stephen Mayne said an extension would give the government power to negotiate changes to Crown and Schiavello's amendment.

The owners' corporations at neighbouring Freshwater Place and Prima Pearl have both previously expressed concerns over the tower's bulk, height and setbacks.

Having previously labelled the project an "unmitigated disaster", Labor Member for Albert Park Martin Foley wouldn't commit to negotiating for such changes with his cabinet colleagues, but said that he stood by his previous comments.

"I have expressed my concerns about the impact of this development previously. I stand by those comments," he said.

## Meet your local candidates

*The Southbank and Montague Meet the Candidates event will be held at the Boyd Community Hub on Tuesday, October 30.*

Hosted by the Southbank Residents' Association (SRA), candidates for the seat of Albert Park Martin Foley (Labor), Andrew Bond (Liberal) and Ogy Simic (Greens) will all be present to answer your questions heading into the November 24 State Election.

The event has been opened up to Montague residents of South Melbourne to attend and will be moderated by former City of Melbourne councillor and Walkley Award winning journalist Stephen Mayne.

The event will start at 6:30pm and it's free to attend. To register and for more information refer to the SRA advertisement on page 4.

[southbankresidents.org.au](http://southbankresidents.org.au)

# Your new point of view

## FIFTEEN 85

SOUTH MELBOURNE

DISPLAY OPEN  
SAT - THURS from NOON-5PM  
Cnr Kerr & Gladstone St South Melbourne

**BUY OFF THE PLAN**  
with 5% deposit\*  
and pay nothing until completion

\*T & C's apply



# A new opening for renters

By Sean Car

*The state government has shown its support for the emergence of the build-to-rent (BTR) market by approving a 60-storey apartment tower at 260 City Rd, Southbank.*

Developer Grocon has obtained approval for Victoria's first ever purpose-built BTR development, which will comprise 400 apartments offered entirely to the rental market.

While the Southbank development targets the higher end of the rental market, its approval is encouraging news for housing affordability in Victoria with hopes that it will be the first of many more to come.

Grocon head of residential Christian Grahame said the approval was a great start that would ultimately lead to an increased supply of quality housing and more choice for Victorians.

"We support the introduction of build-to-rent in Victoria and believe it will be a thriving sector in the future, providing housing, community creation, investment and employment for our growing state," he said.

"Grocon is poised to embrace the opportunities in this emerging sector and we look forward to working with government to get it off the ground."

The BTR model, which focuses on building properties to rent instead of selling them to individual buyers, can provide high quality and well-maintained rental stock to Victorian renters.

As an emerging sector, the property industry has identified a number of barriers to bringing BTR to the general market, which Planning Minister Richard Wynne said his government would be acting on.

These include facilitating planning assessment, establishing an industry working group, financially supporting BTR in community housing, clarifying taxation



Grocon's approved tower at 260 City Rd.

arrangements and making the case for BTR to the federal government.

However, many of the barriers facing BTR sit with the Commonwealth.

"New ideas often take a while to navigate the planning system. These actions will ensure that BTR can prosper and increase the stock of rental housing to meet the current record demand," Mr Wynne said.

BTR advocate, housing expert and former general manager of Frasers Property Australia, Robert Pradolin, welcomed the state government's support as encouraging

news but said more needed to be done at a national level to make BTR more accessible.

"I think it's (BTR) starting to hit the road but we need to identify that this development (260 City Rd) is targeting the upper end. It's still a niche market," he said. "It's the general market where we need to make it more affordable for those who can't afford it."

"It's encouraging that people are prepared to invest in a new product but we need it to be a permanent asset class and not just transitional when the market is down."

Mr Pradolin is part of a growing chorus of property industry members calling on the federal government to adopt a national housing strategy, with BTR being one of its key areas of focus.

He said that, in order to make housing more accessible to those who needed it, the Commonwealth needed to overhaul the current system to encourage Australian superannuation funds to invest in the domestic housing market.

"Australian super funds currently have invested several billion dollars of their members' funds into private build-to-rents in America," he said. "We need those funds directed back into housing Australians by allowing the super funds to achieve their required financial returns."

"If our collective governments collaborate and provide the necessary financial incentives to make this new asset class work, Australian super funds will invest billions into this new and low-risk sector."

"The provision of housing for all Australians not only satisfies the fundamental human need for shelter, but forms the backbone of the essential infrastructure needed for a prosperous country and economy."

## Questions over local job growth

By Meg Hill

*City of Melbourne Census of Land Use and Employment (CLUE) data shows some shaky growth trends in Southbank over the past 10 years.*

Growth has been sporadic over the top three employing industries - arts and recreation services, business services and manufacturing - for the past decade.

Arts and recreation services recorded a loss of almost 25 per cent from 2007 to 2012, and had only regained a fraction of that in 2017.

Business services grew by 2624 jobs from 2007 to 2012, but only 301 from 2012 to 2017.

Manufacturing fell from 5128 jobs in 2012 to 4226 in 2017.

"Southbank has been transforming into an extension of the Central City, which began the process of urban renewal in the 1990s," the CLUE report said.

"The vast majority of residents live in high-rise apartments, the tallest of which is Eureka Tower, at 300m tall."

In terms of employment types - part-time, casual, full-time and contractor - all have recorded growth except contracting.

Built floor space is up to four million square metres from 2.7 million in 2007.

Out of the three top space uses - parking, office and residential accommodation - apartments have grown the most: at one million square metres it's grown by 54 per cent over the past 10 years.



# LUCAS

## ABOVE & BEYOND

At Lucas, we have one clear objective - to work tirelessly for you. By providing exceptional support every step of the way, we give you peace of mind and ensure that your experience with us is both enjoyable and rewarding.

After all, you're the reason we do what we do. And we love what we do.

9091 1400 | [lucasre.com.au](http://lucasre.com.au)

# Council wobbles on Australia Day

By Meg Hill

*There are indications that the City of Melbourne is divided and unclear about the controversy over Australia Day celebrations on January 26.*

The stance of local councils towards January 26 has re-emerged after events last month at the Port Phillip Council.

Cr Dick Gross gave notice he was planning to move a motion calling for a ceremony on January 26 to acknowledge the impact of colonialism.

Cr Gross withdrew his motion before the meeting, stating he wanted an opportunity for more discussion.

Some City of Melbourne councillors have expressed their personal view to *Southbank Local News* that January 26 is an inappropriate day for the celebrations, but have also said the council does not have a formal position and hasn't discussed the issue.

Aboriginal portfolio chairperson Nic Frances Gilley said he thought days that marked colonisation events were not useful days for national celebrations, but added: "I am unaware of the general feeling of councillors towards this view as we haven't discussed it formally or informally so there's not a council view."

Cr Frances Gilley and Cr Rohan Leppert recently came out in strong opposition to



Protestors at this year's Australia Day March in the CBD.

Photo: Sean Car.

Melbourne Day being held on an "invasion day".

But Cr Frances Gilley said Melbourne Day was a city conversation and Australia Day was a national conversation.

However, Deputy Lord Mayor Arron Wood said there was a council position and that the issue would have last been discussed by the council informally "weeks ago".

"The City of Melbourne position is that there is no intention to change Australia Day as it stands, and there's quite a lot of internal discussion that goes on about these issues," he said.

He said it was regularly discussed in relation to local government indigenous initiatives such as the council's Aboriginal Melbourne Plan.

Cr Frances Gilley responded to say that he was sure that he hadn't been involved in any discussions about Australia Day, but that others might have been.

Cr Rohan Leppert said: "Governments at all levels should do more to respect Australia's first peoples' overwhelming opposition to 26 January being our national day."

"As one white man it's not for me to unilaterally propose changes to how one local council resources Australia Day celebrations, but clearly if a consensus proposal from traditional owners were to emerge, we should act on it."

The federal government stripped both the Yarra and Darebin councils of their ability to hold citizenship ceremonies after they both voted to dump January 26 celebrations.

"We fully respect the right of other local governments to represent their constituents and I, personally, believe the federal government has been quite punitive," said Cr Wood.

The issue has been in discussion at Port Phillip Council since last year.



## Meet the State Election Candidates Event



The Victorian State Elections are coming up on 24 November and we're inviting all Southbank residents to put their questions directly to candidates from the three major political parties in this open forum:

- Labor: Martin Foley
- Liberal: Andrew Bond
- Greens: Ogy Simic

Moderated by Australian Walkley Award winning journalist and former City of Melbourne councillor Stephen Mayne.

**Date: Tuesday 30th October**

**Time: 6.30pm – 8.30pm**

**Venue: Boyd Community Hub (Assembly Hall)**

**Address: 207 City Road, Southbank**

Registration plus tea & coffee are available from 6pm, for a 6.30pm event start.

Book your spot at: <https://sra-mtc-vic2018.eventbrite.com>

This free community event is an initiative of the Southbank Residents Association.



# Saving Shearwater

From page 1

Overlooking Southbank Promenade just a short walk from Eureka Tower is an unusual mutton-bird. Weighing in at almost 5 tonnes and standing nearly 8 metres high, the steel sculpture *Shearwater* has stood looking across the city for 23 years.

*Shearwater* is one of a number of high profile artworks created by Melbourne sculptor Inge King. Her works include Art Centre Melbourne's *Forward Surge* and Melbourne University's *Sun Ribbon* to name a few.

The sculpture was commissioned by ExxonMobil's (formerly Esso) Melbourne head office Esso House at Southbank in 1994-95. Although in her 80s, Inge King created the distinctive blue, black and red bird, which was one of the first significant installations along Southbank.

Earlier this year, ExxonMobil sold its Southbank offices and the new buyer indicated they were not interested in purchasing the sculpture. *Shearwater* was subsequently listed for sale through a specialist auction house, which valued the sculpture at around \$350,000.

That's when a friend of Cr Nicholas Reece spotted the piece on the auction house's online register and phoned to alert him. Cr Reece immediately sprang into action.

"There were lots of phone calls encouraging ExxonMobil to donate the iconic work to the city before the auction date, as well as the matter of the auction withdrawal fees,



L-R: City of Melbourne Councillor Nicholas Reece, ExxonMobil Australia Chairman Richard Owen and Central Equity Chairman Eddie Kutner teamed up to help keep 'Shearwater' in Southbank.

which were around \$79,000," Cr Reece told *Southbank Local News*.

"ExxonMobil was fantastic and agreed to donate the work to the people of Melbourne. With just days to spare, *Shearwater* was withdrawn from sale."

"We had the sculpture, but we still needed to cover the auction withdrawal costs and the cost of repositioning the sculpture in Southbank."

Enter well known passionate art enthusiast, philanthropist and lover of all things Southbank in the founder and chairman of property giant Central Equity Eddie Kutner. Just like Inge King, Cr Reece knew that Eddie was too a post war immigrant from Germany.

"We're very proud to be partnering with the City of Melbourne and ExxonMobil to help keep *Shearwater* here in Southbank," he told *Southbank Local News*.

"I never envisaged I would be called upon to save a major existing public artwork, but I am delighted to help out. Inge King is one of Melbourne's greats."

Cr Reece said the team effort was a great demonstration of the power of Melbourne's networks to achieve great outcomes for our city.

"In many big cities a sculpture like *Shearwater* would simply be lost to the people as private interests snap it up and remove it from the public realm. But Melbourne swings into action at moments like this," he said.

*Shearwater* will be repositioned to a nearby location within Southbank Promenade in the near future. The unique arrangement that has put the sculpture in the hands of the public will be recognised with plaques acknowledging the generosity of ExxonMobil and Mr Kutner.

# Boyd park

**Demolition of the 1970s classroom block behind the Boyd Community Hub will start this month after the City of Melbourne awarded the contract to civil construction company Multipro Civil Pty Ltd.**

Councillors unanimously voted to award the \$2.5 million+GST contract to Multipro following a tender process. The company, which Deputy Lord Mayor Arron Wood rated as the "best value tenderer," will be responsible for delivering the park behind Boyd that the community has long been waiting for.

Lord Mayor Sally Capp told *Southbank Local News* the council was pleased to be getting on with delivering the park.

"I'm delighted that construction of Boyd Park will commence this spring, following a tender being issued for the civil and landscaping works," Cr Capp said.

"Delivery of this open space is incredibly important because the population of Southbank is expected to grow by more than 50 per cent in the next 20 years. Providing more parks as density increases is essential for a liveable city."



# School Tours

Saturday, 13 October 2018. 10am – 1pm.

Award-Winning Teachers. Parallel Education. Small Classes.

Tel: +61 3 9904 6110 or visit: [www.haileybury.vic.edu.au](http://www.haileybury.vic.edu.au)



KEYSBOROUGH BRIGHTON BERWICK CITY DARWIN BEIJING

# HAILEYBURY



# Much needed activation

*City of Melbourne councillors have unanimously endorsed a 38-storey proposal for a last remaining key site, which sits on a less-than-desirably-activated City Rd block.*

Developer Maretree Pty Ltd will seek approval from Minister for Planning, Richard Wynne, for a \$60 million proposal for 293-297 City Rd, which will include 212 apartments.

What pleased councillors most at their September 18 Future Melbourne Committee meeting was its ground-floor activation on both the City Rd and Hancock St interfaces.

If approved, the building would consist of ground-floor retail spaces on City Rd, as well as the currently underutilised Hancock St.

This would provide a welcome change to other neighbouring developments, which use the Hancock St interface for substations, car parking and service entries.

Having originally applied for a permit for the site in 2015, this amended application pre-dates planning scheme amendments C262 and C270 and will, therefore, be assessed under old planning rules, which were in place at the time.

In spite of this, council's planning chair Nicholas Reece commended council officers for working with architect Crone Partners to deliver a "good design" outcome, on what Cr Rohan Leppert described as a "really, really challenging block."



Ground floor retail on City Rd.

"It is a really challenging part of Southbank," Cr Leppert said. "It could be the best designed building in the world but would still be on a really, really challenging block where so many planning sins have been committed over the last 10 years."

Cr Jackie Watts also commended the developer for including 10 per cent of the building's apartments as three-bedroom and 64 per cent as two-bedroom.

"We want to attract families all over our city," she said.



A render of the proposed tower from Hancock St.



## Under one roof

By Jacklyn Yeong

*JB Hi-Fi and The Good Guys have found an administrative home in Southbank.*

More than 850 employees are estimated to relocate in April 2019 to the IBM Building at Southgate.

This came after JB Hi-Fi's acquisition of The Good Guys in 2016 and the company's desire to merge both support offices from their current locations at Chadstone Shopping Centre (JB Hi-Fi) and Essendon Fields (The Good Guys).

JB Hi-Fi Group CEO Richard Murray shared his excitement with *Southbank Local News*.

"We are excited to bring two of the best retail teams in Australia under one roof and are really pleased to have found such a great location in Southgate," he said.

## Non Surgical Spinal Care.com.au

51-55 City Road Southbank

NOW ALSO IN SOUTHBANK

Spinal Decompression – for the relief of painful conditions such as bulging, herniated and degenerating discs.



Call to speak with one of our consultants on  
1300 614 280

info@nonsurgicalspinalcare.com.au  
www.nonsurgicalspinalcare.com.au



## FREE E-WASTE RECYCLING DAY

The City of Melbourne is ready to help you clean up this spring.

Drop off your old or unwanted computers, TVs, mobile phones and other electronic waste. E-waste recycling experts TechCollect will recycle them for free.

Saturday 17 November, 10am to 3pm  
Queensbridge Square, Southbank

Please note that parking near Queensbridge Square is extremely limited.

Larger items can be taken to Citywide's Waste and Recycling Centre, 437 Dynon Road, West Melbourne. This is a free service for City of Melbourne residents and proof of address such as a rates notice or drivers licence must be provided to avoid incurring drop off costs.

Earn 100 bonus GreenMoney recycling reward points this spring. Visit [melbourne.greenmoney.com.au](http://melbourne.greenmoney.com.au) to join for free and trade your points for savings at a wide variety of retailers.

Visit [melbourne.vic.gov.au/springclean](http://melbourne.vic.gov.au/springclean) or call 9658 9658





# Another tower heads to VCAT

*The developer of another planning Sturt St planning application bound for the Victorian Civil and Administrative Tribunal (VCAT) is seeking approval for a tower that is higher than what was originally proposed.*

Developer G3 Projects Pty Ltd will head to VCAT in February after the City of Melbourne failed to issue a permit within the prescribed time for its proposal for 175 Sturt St.

Having originally submitted a 13-storey proposal (40 metres), the developer has since amended its application to a two-tower proposal and increased the overall maximum height of 50 metres and 16 storeys each.

The proposal follows the trend of neighbouring developments at 135 and 153 Sturt St, both of which have already won approval at VCAT. All three developments have elected to go higher than the 40-metre discretionary height limit imposed on Sturt St under the Melbourne Planning Scheme.

Local resident and planning lawyer Kristoff Lajoie said that while the new proposal was higher than its original form, it was of an appropriate size and scale for its corner position on Sturt and Miles streets.

“In terms of height and ratio, this proposal is surprisingly reasonable – unlike the other proposals at 135 and 153 Sturt street, which flagrantly exceeded the limits,” he said. “There is no overshadowing at all.”

“The ground floor levels offer arts space and retail. I am certainly of the view that Sturt St needs some street level activation and retail, whether it’s shops or cafes, will bring some appeal to the presently industrial-chic area.”

If approved, the two towers would include 350 apartments, 187 car parking spaces and flexible ground floor tenancies for arts, retail and hospitality.



# Heritage slowed

By Meg Hill

*A Doyle-era conflict of interest stalled City of Melbourne’s Future Melbourne Committee during its October 2 meeting on Southbank heritage.*

The number of councillors present fell below the minimum needed to consider the matter and the meeting was closed after just 13 minutes.

When Planning Scheme Amendment C305 was due to be discussed, councillors Arron Wood and Beverley Pinder declared a conflict of interest.

Amendment C305 proposes significant extensions to heritage overlay and protections in Southbank and South Wharf, affecting 48 different locations.

The conflict of interest related to a 2016 election donation from Crown Casino board member Harold Mitchell to then Team Doyle councillors.

The meeting was already under-attended, with five councillors not present. As only four councillors were left, the chamber lost its ability to discuss and consider the matter. Two members of the public had attended the meeting to speak on the amendments, but verbal submissions could not be heard.

Crown Casino has plans for the country’s tallest skyscraper at 1 Queensbridge St – the site of the old Queensbridge Hotel. Amendment C305 proposes to add 1-7 Queensbridge St to the heritage overlay.

The slow process in finalising the amendment – to eventually be submitted to the Planning Minister for approval – is almost through the first stage of exhibition to the public.

The review has led to some revisions of the amendment – namely the reduction of the scope of the City Rd heritage overlay due to a number of existing permits for demolition or buildings that are already under construction.

# Sturt St up for sale

*As one approved permit for an 18-storey tower at 135 Sturt St was sold to a new developer last month, another 18-storey permit at 153 Sturt St was put on the market.*

The Australian reported last month that local architect Hayball sold its permit to renowned local developer Evolve Development for a figure reported to be “in the mid to high \$20 million range.”

Evolve Development is well known locally for the 21-storey Guilfoyle apartments on Coventry St and is now also in the process of delivering *The Botanic*, also on Coventry St. Evolve Development did not respond to *Southbank Local News* for comment.

Meanwhile, Hayball’s neighbouring architect Rothelowman, which won approval for its 18-storey tower at 153 Sturt St at the Victorian Civil and Administrative Tribunal (VCAT) in July, is also selling its permit.

Colliers International, who also managed Hayball’s sale, is marketing the project with expressions of interest closing on October 25.



SOLD: 135 Sturt St.



For sale: 153 Sturt St.

**RoopRani**  
hair & beauty salon

P5 SOUTHGATE COMPLEX - PH 9686 6504 - WWW.ROOPRANI.COM.AU





**MELBOURNE  
SQUARE®**



ARTIST'S IMPRESSION

## A DESIGN STORY

# THE SPRING COLLECTION

**EXPERIENCE THIS LIMITED EDITION SPRING  
COLLECTION ON SHOW NOW AT THE  
MELBOURNE SQUARE DISPLAY GALLERY**

Partnering with global leaders of design across every touch-point. The Spring Collection offers penthouse quality kitchens with stunning marble, fixtures and fittings by Kohler, premium appliances by Gaggenau and customised home automation by Clipsal Schneider Electric to deliver an exceptional living environment.

To truly have an apartment that reflects you, Melbourne Square has partnered with Hub Furniture to offer you a custom styling consultation to assist in perfecting your new home. The Spring Collection will redefine inner city fringe living.

Positioned in the heart of the Arts Precinct, Melbourne Square is within walking distance to the Sports Precinct, Royal Botanic Gardens, Crown and a range of premium restaurants.

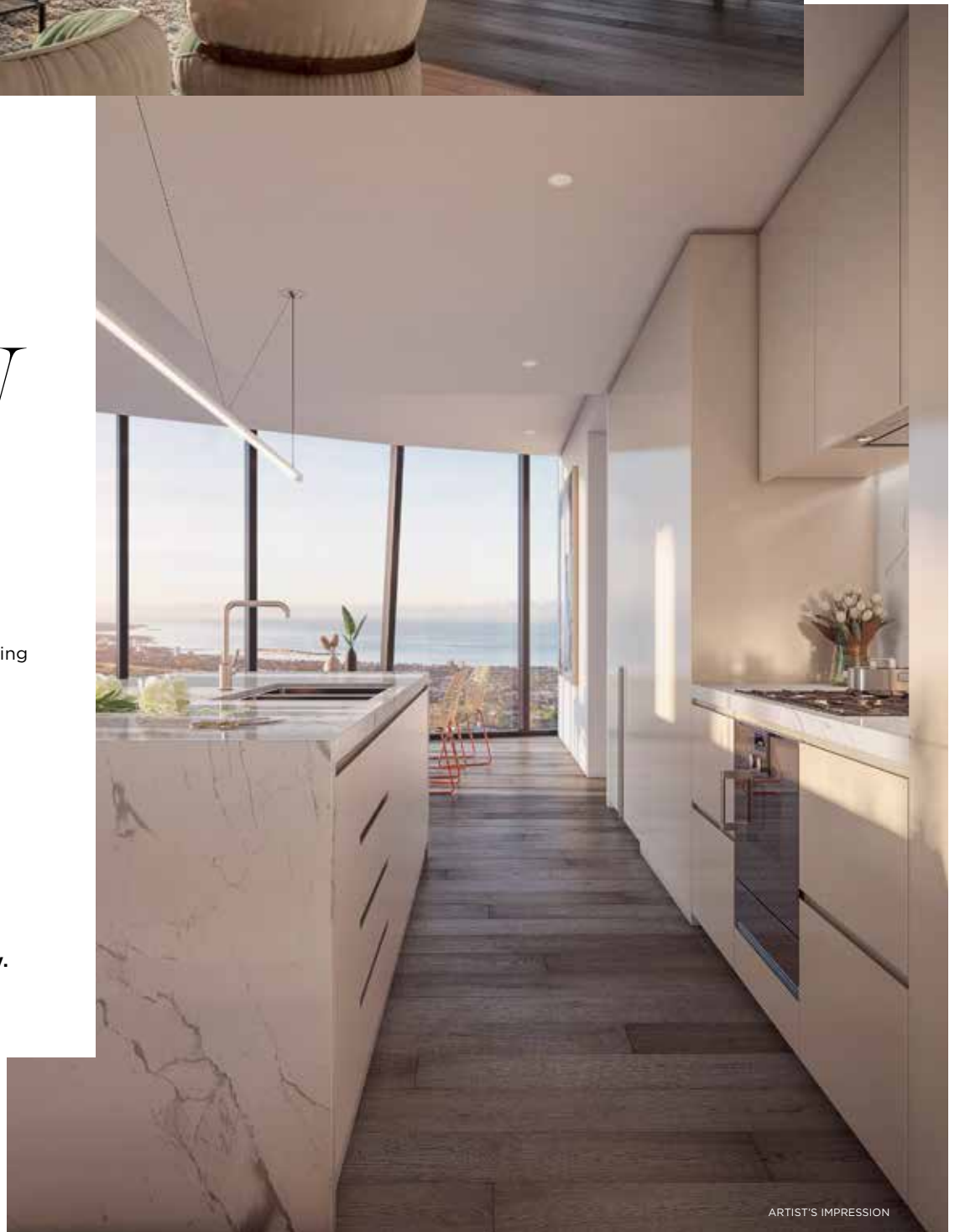
**Book your private consultation to begin your customised journey.**

### APARTMENTS NOW SELLING

2 bedroom - \$628,900\*  
3 bedroom - \$946,400\*  
Penthouse - \$1,855,800\*

### DISPLAY GALLERY OPEN DAILY

11am-5pm  
Corner Power St  
& Kavanagh St Southbank



ARTIST'S IMPRESSION

\*Prices can vary depending on size of residences.

 **MELBSQUARE.COM.AU**  
**1300 888 770 | CBRE**

**carr**



**GAGGENAU**

**KOHLER**

**CLIPSAL**  
by Schneider Electric



# Creating journeys of discovery

*For Carr Designs' Chris McCue, designing the vision of a world-class residential and community precinct is about providing a base that allows the personalities of its future residents to flourish.*

In this case, that base is Melbourne Square and, for Southbank, the MCG-sized development on Kavanagh St, complete with an urban park and supermarket, represents a community-defining opportunity for something spectacular.

While developer OSK Property had expressed its desire for a landmark from the outset, the combined team of Cox Architecture and Carr Designs has been largely responsible for delivering that vision.

And having started his career with Cox in 2000, Carr Designs' director of architecture understands the importance of architecture and design working in unison to deliver extraordinary homes that elevate the quality of life.

"The driver for us is to make the resident feel as if there is one hand across the entire development," Chris said. "We always strive for an interior design scheme that responds completely to the direction established by the architect."

"We want people to bring their personalities to it, their artwork and their own life so what we put forward is just one vision of who might live in them but it's always interesting to see how people then do genuinely make them their home and their sanctuary."

From studying interior design and architecture and starting his journey with Cox, Chris has developed into a leading expert in his field with a career that has seen him take on roles in Shanghai, London, Tokyo, Hong Kong and Italy.

Since returning to Melbourne, he said he had been encouraged by a growing shift both within the industry and at a government level to set higher standards in good architecture and design.

"I think the implementation of the state government's Better Apartments Design Standards is a welcome change, as architects," he said. "My criticism of Melbourne property had always been that there was a lot of money and focus spent on interior solutions but not on the building envelope and getting the efficiencies of the façade working as they should relative to our climate," he said.

"There is the fair share of building stock in Melbourne generally that doesn't pay heed to the importance of a good quality architectural outcome. I think for OSK Property to invest genuinely in a really good architectural outcome is what really interested me to be part of the project."

Stage one of Melbourne Square, currently under construction, consists of the first of two of the project's four residential towers. A hotel tower and commercial tower are also still to come.

Together with the urban park, Woolworth's supermarket, childcare and retail facilities that will be delivered during stage one, Chris said the first two towers had been designed with complementary languages of a healthy community in mind.

Both targeting the owner-occupier, he said every apartment had been tailored using a simple, yet sophisticated, design approach



*Carr Designs' director of architecture Chris McCue.*

that adopted the "concept of the fold", providing residents with the flexibility to make it their own.

"The concept of the fold that comes into the language of the architecture is realised in the kitchen and bathroom detail within the apartments," he said. "There's obviously a range of scale of apartments so the challenge for us intellectually is to get them working as spaciouly efficient as they can do."

"We design with a base building architectural palate that is pretty timeless so that by the time the building is realised four years down the line from when we start the initial design process it still holds true as this genuinely authentic design outcome."

"All of the buildings are wrapped in this curtain wall glass so the view and the aspect to where you are in the precinct is always about engaging with the local context so therefore it doesn't need a lot of detail or complexity within the apartments themselves."

Currently promoting the project's *Spring Collection*, Carr's rationale not only pays homage to the green community spaces

on Melbourne Square's doorstep but also promotes the best of everything that Southbank has to offer.

And by partnering with the globe's leading designers on every aspect of the project, the special amenity offered throughout the entire development will ensure that it becomes a destination that further strengthens Southbank.

"The idea of launching the *Spring Collection* was about providing something that was fresh. Now that we're coming out of the depths of winter you can see yourself within the apartment, so it's lighter and it's brighter."

"I think the view photography is pretty incredible in terms of the distance that you can see of the bay on the south and within the city context. I think the integration of art into the development is also continuing to be a richer piece and genuinely ties into Southbank as the Arts Precinct. It's really exciting."

[Melbournesquare.com.au](http://Melbournesquare.com.au)

## New era for market

By Niccola Anthony

*South Melbourne Market (SMM) will usher in a new era in March when it introduces a revitalised management committee.*

A new charter will come into effect on March 1 that seeks to overhaul the SMM committee's management powers, so it can operate more efficiently as a commercial entity.

The charter was established as a response to the City of Port Phillip's concerns that the existing committee was only advisory in nature and lacked the necessary governance powers established for the managing entities of similar Victorian and interstate markets.

Under the new charter, the SMM committee will have the power to set the long-term vision for the market, establish and oversee marketing and promotion, oversee day-to-day market management and enter into contractual and business arrangements.

The operation of the current charter delegates limited management powers to the committee - being the power to enter into leasehold and licence agreements with market stallholders.

Under structural requirements in the new charter, the SMM committee will consist of up to five members - two councillors and three independent members appointed by a selection panel.

The current charter appoints three councillors and three to four independent committee members.

At the October 3 council meeting, council officer Kylie Bennetts explained the changes to the structure and functions of the SMM committee.

"It's a far more extensive list of requirements, but still gives scope for a mostly independent committee with a particular skill set in this area to really take that and implement it in a way that they see fit," Ms Bennetts said.

"Importantly, the senior officer role would no longer be a member of the committee. That person would certainly observe the committee and provide advice [to it], but they will also need to provide independent advice to the council."

Cr Ogy Simic, who voted in favour of the motion, was optimistic about the role of the new charter.

"I certainly welcome the proposed changes. I believe that they take into consideration the broad ranging feedback that we've received from all of the stakeholders who were consulted in this process and that, while the changes are small, they are changes that will ultimately significantly improve the operations of the SMM management committee," Cr Simic said.



# E-scooting into the oBike void

By David Schout

*After Melbourne's first venture into dockless bicycles proved disastrous, an electric scooter company wants to fill the void.*

California-based Lime has approached both VicRoads and the City of Melbourne in a bid to get its e-scooters on to city streets.

However, the first hurdle to launching in the city may prove its toughest. At present, e-scooters exceeding a 10kmh top speed and 200W capacity are classified as motorbikes, and require a licence and approved helmet.

These road rules would render the scooters – which have a top speed of 23kmh and 250W capacity – redundant, as most potential users would not have a motorcycle licence.

The scooters, which are currently available in US and European cities, work in a similar manner to the now obsolete oBike, whereby users unlock them via a smartphone app, and park them where they please.

While the “dockless” aspect in theory allows greater user-flexibility and eliminates upkeep costs of docking stations, oBikes were consistently discarded and vandalised. Its failure, however, has not deterred Lime.

“Lime is conscious of Australia’s history with companies who have introduced



micro-mobility solutions in the past and did not put the same care and commitment into integrating their products into the community,” a spokesperson said.

Lord Mayor Sally Capp said after oBike’s demise that “regulating people’s behaviour” was “a big challenge for operators”.

The startup has claimed it will more closely monitor its fleet. When pressed on how it will overcome Victoria’s tough rules on electric scooters, the spokesperson said current discussions would determine its viability.



Left to right: Bernadene Voss, Richard Wynne, Martin Foley and Nicholas Reece announce the framework on October 5.

## Framework final

*The state government has released the final framework and planning controls for Fishermans Bend.*

Planning Minister Richard Wynne, Member for Albert Park Martin Foley, City of Port Phillip (CoPP) Mayor Bernadene Voss and the City of Melbourne’s (CoM) chair of planning Nicholas Reece gathered at South Melbourne Primary School in Southbank on October 5 for the announcement.

The framework, which will soon be supported by an infrastructure funding plan, is the product of 12 months of public consultation and over 250 submissions.

While the final framework remains generally similar to the draft framework released in October 2017, planning controls have been strengthened in many areas including lower interface heights in the Montague Precinct.

The 26 tower proposals, which were “called in” by the Minister for Planning

in February, will also now be assessed by a Statutory Advisory Committee against the new planning controls.

The 480-hectare site represents Australia’s largest urban renewal project. Under former Liberal Minister for Planning Matthew Guy, Fishermans Bend was rezoned under capital city resulting in skyrocketing land values and a windfall of apartment applications.

This final framework is the product of a full Andrews’ Labor Government term effort to consult with planning experts and the community for a sustainable plan that maps out the vision for a world class residential, business and community precinct.

Read Montague Community Alliance convener Trisha Avery’s column on **page 24** of this edition for an insight into how the Montague Precinct will be impacted.



Yarra River Business Network

### NETWORKING LUNCHEONS

**Yarra River**  
Business Association

**THURSDAY, 15 NOVEMBER 2018, 12 NOON-2PM**  
**CARGO HALL, SOUTH WHARF PROMENADE**

**GUEST SPEAKER:**  
**CR. SALLY CAPP, WHO WILL**  
**SPEAK ABOUT HER VISION FOR**  
**SOUTHBANK, SOUTH WHARF AND**  
**THE WHOLE LOWER YARRA RIVER -**  
**AND SHE HAS LOTS OF IDEAS !**

**\$77 PER HEAD, (GST INC)**  
**PRE-LUNCH DRINK**  
**2 COURSE LUNCH (MAIN & DESSERT)**  
**WITH WINE, BEER & SOFT BEVERAGE**  
**AFTER-LUNCH COFFEE & SWEET THINGS**

**Bookings:** [www.yarrariver.melbourne/lunch](http://www.yarrariver.melbourne/lunch)

**Enquiries:** **Tim Bracher 0412 502 931** [exoff@yarrariver.melbourne](mailto:exoff@yarrariver.melbourne)

## Whittles

Owners Corporation Management Services



throughout Australia, Whittles has established itself as a leading owners corporation manager nationally. With a growing portfolio of high profile and prestigious high-rise apartment buildings, Whittles is proud to be associated with Docklands.

# whittles.com.au

For superior owners corporation management services,  
**contact the Docklands dedicated team**

Whittles, Level 1, 838 Collins Street, Docklands VIC 3008  
T 03 8632 3300 E [info.docklands@whittles.com.au](mailto:info.docklands@whittles.com.au)



# Strata dwellers face solar discrimination

*While the major political parties are setting out to woo voters with solar subsidies, these policies do little for strata dwellers such as Southbankers.*

In fact, with hundreds of millions of dollars promised for suburban free-standing retrofits, it can be argued that apartment dwellers will, in fact, fund the subsidies.

This issue came to the fore at a recent "Chairs Lounge" function hosted by the We Live Here lobby group on September 26.

Strata lawyer Tom Bacon opened formalities by pointing out that the state Labor Party's recent \$1 billion solar subsidy election pitch excluded apartment dwellers.

"Drill down into the detail and you'll find the policy extends to 670,000 freestanding homes, and excludes apartment buildings," Mr Bacon said.

Mr Bacon also said any cuts in the retail price of electricity to households were unlikely to benefit owners' corporations (OCs) which face massive power bills for the maintenance of common areas.

"They'll be able to offer this to voters, because they will have given assurances

behind closed doors that existing coal powered stations will have their operating lives extended by some years. In return, power companies will put a cap on power prices, and will lower prices for some homeowners," Mr Bacon said.

"The price drops will not extend to larger OCs and businesses because these are likely [to be] on different rates. The short answer is that those living in OCs will not see the lower prices that freestanding homeowners shall receive."

"And if you're on an embedded network, there is double pain, as those companies that run these networks will likely not pass on the full discounts on offer," Mr Bacon said.

Melbourne MP Ellen Sandell also spoke at the forum, reinforcing the message that strata-dwellers are being left out in the cold.

And, she said, more generally, renters would also miss out under the government's plan to reward free-standing home-owners.

She there was no incentive for landlords to invest in solar or renewables, as it was the responsibility of tenants to pay for utilities.



Locals line up to question (left to right) Martin Foley, Andrew Bond and Ogy Simic on September 13.

## Talking transport

*The three major candidates for the state seat of Albert Park answered questions on local transport issues at the Metropolitan Transport Forum for Port Phillip last month.*

Held at Port Melbourne Town Hall on September 13, sitting member for Albert Park Martin Foley, Liberal candidate and City of Port Phillip councillor Andrew Bond and Greens candidate and Port Phillip councillor Ogy Simic addressed locals on the night.

Moderated by City of Port Phillip Mayor Bernadene Voss, the event produced nothing particularly ground-breaking but did provide local voters with a chance to better understand each party's local transport policies ahead of November's state election.

Before candidates addressed the audience, Mayor Voss stressed council's key local

transport priorities that she said were critical to easing congestion in the City of Port Phillip.

These included a commitment to starting Metro 2 to Fishermans Bend, actioning the St Kilda Rd safety project and completing the Park St tram link from the new Anzac Station at the Domain Interchange to South Melbourne.

While it came as no surprise that there were no policy announcements on the night, Mr Foley reiterated his government's record investment on transport infrastructure since it was elected in 2014 and he assured locals that this would continue if re-elected.

ADVERTISEMENT

**Only the Liberals will make our community safe**

- ✓ More police on the beat
- ✓ Tougher jail sentences
- ✓ Fix the broken bail and parole systems

**Andrew Bond**  
LIBERAL FOR ALBERT PARK

Authorised by N Demiris, 104 Exhibition St, Melbourne.

☎ 0484 257 850

🌐 [www.AndrewBond.com.au](http://www.AndrewBond.com.au)

✉ [Andrew.Bond@vic.liberal.org.au](mailto:Andrew.Bond@vic.liberal.org.au)

f /AndrewBondForAlbertPark







# A tour of our Arts Precinct and its people

By Susanna Ling

*Arts organisations in Southbank talk a lot about being part of Melbourne's dedicated Arts Precinct – but what does that really mean?*

Melbourne's Arts Precinct has had a lot of publicity of late. Cradled in a bend of the Yarra River just south of the central business district, it's set alongside the Royal Botanic Gardens and extends all the way down to the Malthouse Theatre on Sturt Street – and it's undergoing what Premier Daniel Andrews has described as “a once in a generation transformation”.

But new buildings and reimagined thoroughfares, exciting as they are, are only part of the story. I've set out to talk to the flesh-and-bones people who work at the organisations that give the Arts Precinct its name, to see what it means to them – to get to the beating heart of this suburb.

As far back as the turn of the 20th century, what's now the Arts Precinct was regarded as the entertainment district of Melbourne – a public space alive with dancing, a 5000-seat circus auditorium and an ice-skating rink.

Legislation to turn the area into a dedicated cultural hub was passed in 1946, but progress was slow. The National Gallery of Victoria (NGV) opened in 1968; the Arts Centre, after the negotiation of significant geographical difficulties, in 1984.



*Construction of a new park at Southbank Boulevard.*

Today, rapid change is afoot. Barricades and bollards line Southbank Boulevard, with signs assuring us that “Southbank is still performing while we're transforming”. Bunting hangs from power poles, and piles of rubble call to mind the inevitable scenes of destruction 10 minutes into any Marvel movie.

Cranes loom over what will shortly open as The Ian Potter Southbank Centre, the centrepiece of the \$200 million infrastructure

build at the University of Melbourne's Faculty of Fine Arts and Music, which will also see a new linear park connecting Sturt and Dodds streets.

With significant financial investment from the Victorian Government to support Southbank's revitalisation, plans to date include the new NGV Contemporary gallery, upgraded theatres, greened public spaces and the redevelopment of Dodds St and Southbank Boulevard.



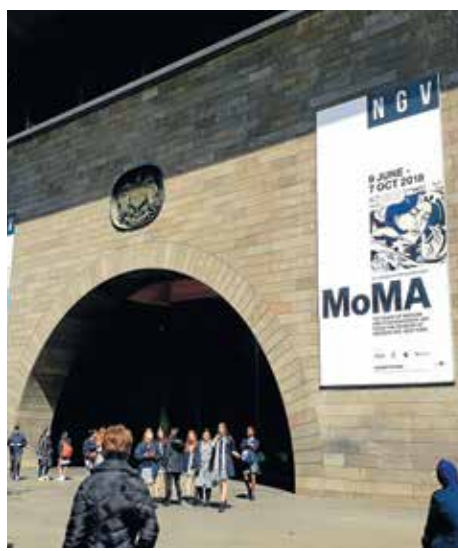
*The future Melbourne Conservatorium of Music.*

## Lights, camera, action

I've arranged to meet filmmaker Nikki Tran on the corner of St Kilda Rd and Southbank Boulevard, because the place I'm heading to first – ACMI X, where Tran is a creative resident – is notoriously difficult to find.

It's located behind the NGV, Australia's oldest and most visited gallery, which occupies the large corner block opposite the university's Southbank campus.

Two long white posters unfurl on either side of the entrance, advertising the gallery's current exhibition of works from New York's Museum of Modern Art. It's a reminder – as is the busload of overseas travellers who've just piled out onto the footpath – that Melbourne is an international city.



*The National Gallery of Victoria.*

Tran and I weave in behind the curved wall of the Arts Centre and cross a narrow pedestrian bridge.

Occupying half a floor of the Primrose Potter Australian Ballet Centre, home of the Australian Ballet studios, ACMI X is an open-plan co-working space dedicated – very evidently – to the creative industries.

Retro arcade games beckon from the kitchen, geometric patterns cover the walls, pieces of vintage film equipment stand, unobtrusively, in corners.

Tran, a 2014 Master of Film and Television graduate from the Victorian College of the Arts, is into her second year of residency at ACMI X. On any given day, she'll find herself working alongside games developers, artificial intelligence start-ups, screenwriters, and virtual reality designers.

“I first applied in 2016 with fellow VCA graduate filmmaker Simon Trevor, when we were halfway through production of our web series *Fresh!*” Tran explained. “We thought it would be a great space to have production meetings – just to have a space to come and work that's not our homes.” As a filmmaker looking to bridge the gap between study and the profession, for Tran, the residency is also about creating industry connections.

“Working in here, you really feel like you're part of something, and because there are

other people in the film industry working here, it really opens up the possibilities for collaboration.”

We head back towards the bustle of St Kilda Rd and part ways – Tran is off to pack for her upcoming trip to Los Angeles, where her web series will be screening internationally for the first time at the Los Angeles Film Festival.



*The Testing Grounds.*

## Fine tuning

I decide to take a shortcut to my next destination – the recently redeveloped ABC studios – but get lost somewhere behind the loading docks of the Arts Centre, cool and dark and strewn with pallets. I catch a glimpse of the roofless alternative arts space Testing Grounds across the street. At times packed to its steel rafters, today it's playing host to just a few coffee-drinkers enjoying the mid-morning sun.

I'm a little late to meet Jack Schiller, who has been principal bassoon of the Melbourne Symphony Orchestra since 2013, and for whom Southbank is a familiar stomping ground.

Depending on the venue for the week's concerts, he'll be rehearsing at either the ABC's Iwaki Auditorium, Hamer Hall, Sidney Myer Music Bowl or the Melbourne Recital Centre – or, as he



did earlier this year for a MSO chamber music performance of early music, among a collection of old harpsichords at the NGV.

He's also a mentor for the Melbourne Conservatorium of Music's new Master of Music (Orchestral Performance), which pairs aspiring orchestral musicians with their professional counterparts in the MSO.

Despite working across multiple venues in the precinct, Schiller doesn't see the links binding all of the organisations – and the area – together.

"But maybe once the redevelopment is finished, the Arts Precinct will be more connected," he said, pausing. "And hopefully then we'll have some better food options".



Creative Spaces at The Guild.

## The waiting game

I need to introduce Schiller to Godot, which opened a little over a year ago. A small café with a minimal, industrial-feel fit out, it's tucked in a quiet spot in the shadow of residential high-rises.

As with all good Melbourne watering holes, it's not particularly easy to find. From Sturt St, I turn in at the Assembly Point exhibition space (the exhibitions change monthly), walk past the Creative Spaces Guild and the Melbourne Fringe Festival office, and ... there it is: glass doors flung open, students and office workers lined up, a muted palette of navies and natural tones punctuated by the high-vis orange of construction workers from the many building projects underway.

Owner Pourya Sadr has a deep connection with Southbank. An engineer by profession, after moving from Iran to Australia in 2008 he worked in food and beverage at the Arts Centre Melbourne and the Malthouse Theatre, was a regular visitor at the Australian Centre for Contemporary Art, and had a show at the Melbourne Fringe Festival.

He shies away from calling himself an artist

– "I'm an enthusiast" – but clearly holds the arts very dear.

"When I left the Arts Centre and started working as a builder for cafés around the city, I always wanted to come back to the Arts Precinct because of the experience I'd had in the area," he said.

Having struggled in his own student days to find places close to uni that catered to a meagre budget, he set out to start a café that did just that. The art that adorns the cafe walls has been either commissioned or purchased from student artists, and in time, Sadr hopes to set up a screen on the back wall for video projections as a free, student-curated exhibition space.

Most of the Godot staff are current or recently graduated art students, which can be problematic when the end-of-year exhibition rolls around and none of them is available for shifts.

"But it's very pleasant place to work. Everybody is inspired. A happy team, for me, is always better than a skilled team."

Sadr is optimistic about the revitalisation of the area. "Next year, as this whole area becomes more viable for pedestrians, I imagine there will be a lot of venues opening up," he said. "And I'm hoping that it will create an artistic triangle."

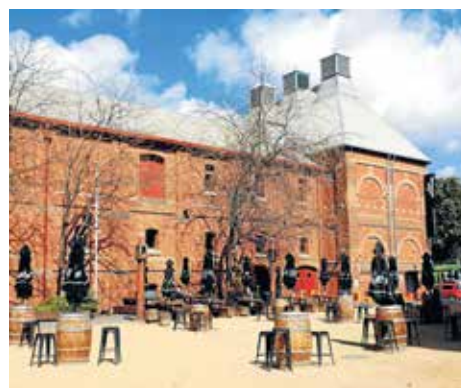


The Australian Centre for Contemporary Art (ACCA).

## The show must go on

The Australian Centre for Contemporary Art is just a short walk from Godot, on the corner of Sturt and Grant streets – a stack of giant Toblerone pieces atop a wide gravel plot. Last month the forecourt was teeming with visitors to the Melbourne Art Fair's Vault Hall, keen to see the most exciting contemporary art of the region from within the prefab walls of a luxury tent, but today it's mostly empty.

ACCA somewhat dwarfs the neighbouring Coopers Malthouse, an 1892 building of red brick archways and narrow windows. Once a brewery, it now houses



The Malthouse Theatre courtyard.

the two theatres, rehearsal rooms, bar and café of the Malthouse Theatre. Vestiges of its history remain in the beer kegs repurposed as bar tables, and cheesy nineties pop oozes out of speakers mounted to its outside walls.

Next, I head through the covered walkway back towards Grant St, passing by the unassuming door to the studios of Melbourne's flagship contemporary dance company Chunky Move.

A small sandwich board on the footpath of Dodds St assures me the Margaret Lawrence Gallery is currently open, while across the road, paint-smearing students pass in and out of the refurbished former police stables, recently reopened as a visual art wing and performance space.

The matrix of white tubing clinging to the façade of Melbourne Theatre Company's (MTC) Southbank Theatre is luminescent in the sunlight, and the red LED text crawling around the corner of the building tells passers-by what's on now (*Working With Children*) and what's coming up next (*The Architect*) for one of the city's major performing arts companies.

Finding myself fenced off from Southbank Boulevard – a colossal drill is churning up the road – I'm unsure whether to take a left past the MTC and the Melbourne Recital Centre, or a right, past the precinct's recently-opened art museum which houses a \$10 million collection of contemporary artworks from Australia and New Zealand.

A Ronnie van Hout video work on the screen above the entry to the Buxton Contemporary, in which the artist appears to be eating a smaller version of himself, decides for me.



Buxton Contemporary.

## Taking centre stage

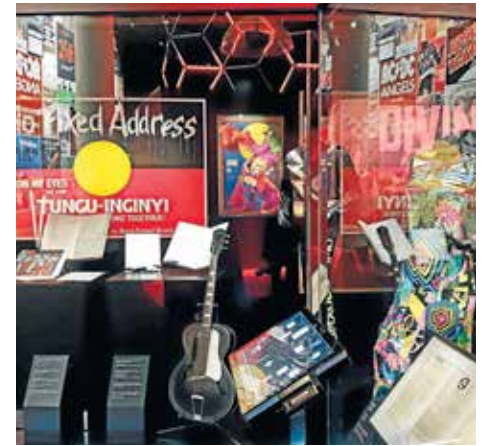
I've now looped back to visit the Arts Centre Melbourne, a stone's throw from the NGV on St Kilda Rd.

Outside, rippling flags advertise the Australian Ballet and Orchestra Victoria's production of *Spartacus*, now on at the Arts Centre's State Theatre. Inside, a piano in the foyer invites visitors, Alice-in-Wonderland-

style, to "Play me – I'm yours". Everything – carpets, ceiling, pillars, lifts, bannisters – is deep red and gold, dimly glittering under the canopy of yellow downlights.

I'm here to meet Stephen Armstrong, creative director of Asia TOPA, the Asia-Pacific Triennial of Performing Arts. Deciding it's too windy to sit outdoors, we head for the café hidden behind the dazzling displays of the Australian Music Vault.

Armstrong points out that, in the intervening decades since the first Arts Precinct buildings were conceived – the NGV, Hamer Hall, and Arts Centre Melbourne – our notions of culture and art and community have shifted.



The Australian Music Vault - Arts Centre Melbourne.

"We suffer from living and working in buildings that were designed with a kind of modernist principle. In the past, these buildings were shut down. You had to have a ticket to get inside. That is completely antithetical to the way we view things now, which is to put the inside on the outside as much as we can, to engage and say, 'You're welcome,'" he said.

Like much of this part of the city, Arts Centre Melbourne is the process of being reimagined. Its major venues, forecourts, and public spaces will all be reconfigured with a view to becoming part of a more integrated Arts Precinct.

"So you won't be at Arts Centre Melbourne, necessarily, you'll be in the precinct," Armstrong said. "Likewise, if you're attending a VCA exhibition at The Stables."

"And that doesn't mean that any of us lose our identity or our sense of responsibility for art forms or our audience – it just means greater opportunity ... The way that the precinct is developing geographically and spatially means that we're closer together."

As I walk back along Southbank Boulevard, past the rubble and swinging cranes, Armstrong's words in my head, I'm reminded of a recent interview with composer and festival director Jonathan Mills upon his appointment as enterprise professor to Southbank's Faculty of Fine Arts and Music, in which he articulates the questions – and hopes – that seem to be on the minds of many of those who work within the precinct.

"How does one make sense of opportunities of co-location that are happening? How does this faculty relate to the many professional arts organisations on its doorstep and vice versa?"

It's exciting to think what Melbourne's Arts Precinct might look like in a few years' time, and with so much investment in the area – of which financial is only one kind – we can all look forward to greater opportunity to open up doors, forge new connections, and celebrate our diversity in a shared public space.





# Funnelling the fumes

**Did you know that Transurban is responsible for managing the air quality from the ventilation stack on Grant St?**

As the operator of the Domain Tunnel, which passes underneath Southbank's arts and low-rise precinct, Transurban sensors monitor the levels of carbon monoxide, nitrogen dioxide and particulate matter within both the Domain and Burnley tunnels.

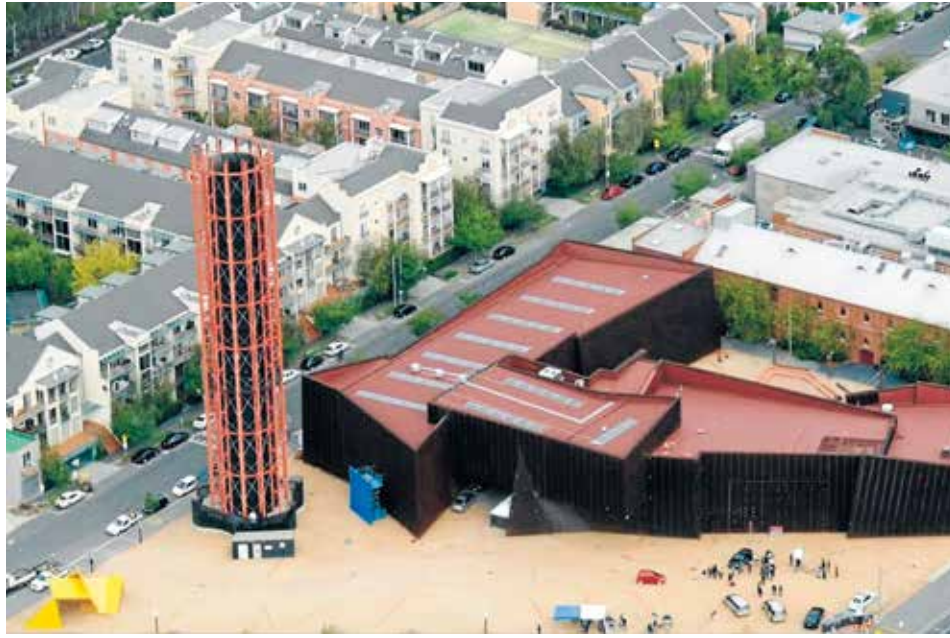
In response to concerns raised by some local residents about the potential health impacts on the community from the ventilation stack, Transurban's results, which it publishes quarterly on its website, suggest there is no reason to fear.

According to its records, emission levels from the Grant St air stack consistently are around 10 to 15 per cent of the Environmental Protection Agency's (EPA) maximum allowable discharge. The company says that the frequency of its air quality reporting also exceeds requirements.

With the recent approval of high-rise towers at 135 and 153 Sturt St, some locals have raised concerns that future residents might be impacted by being within a closer proximity to the stack.

However, the EPA's acting chief environmental scientist Leon Metzeling also put these concerns to rest.

"The 'safe distance' is assessed with an



The Domain Tunnel ventilation stack on Grant St.

in-depth study, often involving modelling and taking account the configuration of buildings," he said. "The assessment is made on the most conservative basis possible, to ensure that the risk of anyone being affected is acceptably low."

"Balconies on 135 Sturt St are not expected to be exposed to any air pollution levels in

excess of health guidelines and standards as a result of the vent stack emissions."

Despite satisfying the EPA's regulations, the developer of 135 Sturt was required to submit a plume study and effect of the exhaust stack on its development as a condition of its planning approval.



Volunteers gather at Southbank. Photo: Mick Morley.

## "Rewarding" clean up

**On World Clean Up Day, about 300 volunteers gathered in front of Southgate Avenue after a two-hour spring cleaning of the city.**

The event was a collective effort from several clean-up and conservation groups, which are pushing for legislative action from the government in a bid to curb plastic pollution.

A 3.5-metre soft drink bottle was set up by the Boomerang Alliance at its Southbank return location point to raise awareness of a campaign to introduce a container deposit scheme to Victoria.

More than 2680 bottles and cans, 726 plastic straws, 1530 coffee cups and lids as well as 680 other drink cups and tops were collected during the spring clean.

**DFO South Wharf Homemaker**  
**Level 1 Shop 111 opposite JB HI-FI**

FURNITURE  
DECORATIONS  
GIFTS

\$ SALE \$

Luggage

**pierre cardin**  
PARIS

[www.byroyale.com.au](http://www.byroyale.com.au)

**See what you've been missing at Scoogle.**  
 The Guilfoyle 131 Wells St. The Domain 3006  
 call for an appointment 9077 9883  
[www.scoogle.com.au](http://www.scoogle.com.au)





# THE ARTS PRECINCT

# Southbank ARTS FESTIVAL

comes alive with

By Jacklyn Yeong

Melbourne International Arts Festival is a yearly wake-up call to bring the city alive, to make new friends and rekindle old friendships.

The festival will be celebrating the brilliance of fire, music, story and art coming together from our city and beyond.

Southbank's Arts Precinct will be playing its part in the festival by featuring a range of programs displayed or performed by local and international artists in the Arts Centre, Melbourne Recital Centre and the Coopers Malthouse.

The festival's artistic director Jonathan Holloway told *Southbank Local News* he wanted to curate an accessible and multicultural event for people to viscerally experience new worlds with all their senses.

"I want the audience to have a glimpse into so many different worlds and to open different doors that they would never normally get to open," he said. "The festival can take you on a journey all around the world and back without going very far and so I really want to find works which are utterly transporting."

### What's on:

Arts festival alumni Christian Wagstaff and Keith Courtney have created an exhibition for people to literally open *1000 doors* throughout the entire festival period. Exhibiting at the same location as last year's *House of Mirrors* at the forecourt of Arts Centre, each door will open to a personal adventure containing different possibilities.

French artists Compagnie Carabosse will be playing with fire as they transform the Royal Botanical Gardens (RBG) into *Fire Gardens* from October 10 to 13.

Also featuring at RBG until October 21 is the exclusive dance circus from the UK *Lexicon*, celebrating the misfits in a world of

magic and laughter suitable for all ages.

Join protagonist Celeste from October 18 to 21 for a heritage discovery trip from Melbourne to China at the Playhouse at Arts Centre Melbourne for *A Ghost in my Suitcase* - a play adapted from Gabrielle Wang's novel of the same name.

Artistic director Jonathan Holloway recommends *Layla and Majnun*, which will feature at the State Theatre from October 10 to 14. He described it as an "underrated Middle Eastern dance and music work based on a tragic love story," which will feature chamber arrangements by the Silkroad Ensemble - an acclaimed ensemble founded by legendary cellist Yo-Yo Ma and dance works by choreographer Mark Morris.

The *One Infinity* project, showing at the Malthouse from October 12 to 20, will offer an immersive experience of music and dance.

Mr Holloway described *Watt* as a "simple, beautiful one-person performance" based on the story of Samuel Beckett. The theatrical performance will be bringing the Playhouse

audience back to the 20th century until October 13.

ACCA and Buxton Contemporary will also be hosting works by Eva Rothschild and Ronnie Van Hout respectively, while visitors can also jump on one of eight art trams throughout the festival.

While some parts of the festival will be affected by major works at Southbank Boulevard and St Kilda Rd, Mr Holloway welcomed its inevitability as part of the festival.

"We work both sides of St Kilda Rd," he said. "The Malthouse and the Melbourne Recital Centre will be impacted by roadworks but I always think when I'm putting a festival together, I want the events to be so good that no level of traffic chaos could stop people from getting to them!"

"A festival responds to how a city is, and it's aspirational rather than critical and that's what's exciting about a festival in Melbourne."

Melbourne International Arts Festival runs until October 21. [festival.melbourne](http://festival.melbourne)



# All you can dance

By Jacklyn Yeong

Whether you're a dance enthusiast, an observer or just someone looking to have a good time, the 24-hour dance project was curated for you.

Creator and primary dancer Freya McGrath created the project in response to her love for dance – as simple as that.

"I'm not a particularly talented dancer," Freya said. "I'm just enthusiastic and have a lot of willpower associated with dance."

Presented as part of the *Critical Mass* program for Melbourne Fringe Festival at Testing Grounds, the project was an endurance performance heavily inspired by works of performance artists such as Marina Abramovic and Tehching Hsieh with a touch of hit dance films from the 80s like *Billy Elliot* and *Flashdance*.

Freya explained that she wanted to use



her body and image for a project that went beyond self-empowerment.

"I hope that the project is a space for everyone to celebrate whatever their engagement with dance is. Sometimes it's small and intimate, sometimes it's really big and performative," she said. "So that's why I'm glad that we've been able to create an opportunity like that."

"Creating 24 hours where people can

kind of break away from the way that they kept their bodies and themselves operating in a day-to-day context," she continued. "Also for them to stop going through the motions and to just let loose and feel deeply whether it's extreme joy or real rawness and vulnerability."

Producer Harriet Wallace-Mead also highlighted inclusivity and creating a safe space for everyone in the community as vital ingredients in developing the dance layout.

"We were interested in this idea of the project being an 'inhibition liberated machine,'" Harriet said. "Because we want it to be like 'no matter how afraid you might feel of this right now, we promise you, you're going to feel good!'"

The performance went on from 9pm September 29 to 9am September 30 following a narrative arc that consisted of a 80s, 90s and "noughties" section, an abstract dance theme and much more.

"I worry that in the future if I'm at a party and I'm a bit tired, people are going to be like, 'Are you kidding? No, you can dance for 24 hours.'" Freya said.



## Exposing modern hospitality

By Jacklyn Yeong

Gabrielle Pearson's original stage play, *Waiting On You*, promises audiences a raw and relatable story of a young woman's life in a foreign, underground world of modern hospitality.

The play focuses on 20-something-year-old Georgi's (portrayed by actress Catherine Morvell) gullible relationship decisions with her unique, yet stereotypical, set of colleagues.

Theatre-goers will experience the beautiful nightmare of the protagonist losing herself in a continuous pursuit of trying to keep up with the rest of the crazy world.

Written, directed and produced by Pearson and presented with an original score performed live by local music composer Emily Dynes, the play prides itself with an all-Melbourne cast and a female-dominant production team.

Melbourne Acting Studio's Bruce Alexander praised the play for its confrontational yet relatable narrative.

"It is a play every young woman with a view to venturing out into the world should see, or read," he said. "Semi-autobiographical in nature, the play is both a champion for new experiences and a warning about losing your way in the pursuit of those experiences."

The play will be debuting at the Melbourne Theatre Company's Lawler Theatre for a four-show season running from November 1-3.

Tickets are now available on [www.mtc.com.au/plays-and-tickets/other-companies/waiting-on-you](http://www.mtc.com.au/plays-and-tickets/other-companies/waiting-on-you)

## Milestone concert

By Jacklyn Yeong

The Newsboys Foundation will be celebrating its 125-year milestone with a diverse cross-cultural concert – *125BPM* – in collaboration with Melbourne Youth Orchestras (MYO) and Outer Urban Projects (OUP).

The *125BPM* concert will be featuring talents of 60 young artists including an orchestra, rappers, beat boxers and gospel singers. It will be orchestrated in a fast, quick and bright allegro tempo under the direction of MYO's music director Brett Kelly.

"Music has the unique ability to bring people together across enormous distances," Mr Kelly said. "This celebratory event brings together a rich and inspiring diversity of young musicians."

Mr Kelly will also be incorporating original compositions and arrangements by William Barton, Irine Vela and the OUP artists with



Kevin Nugara (OUP), Natasha Hanna (OUP), Noah Lawrence (MYO), William Barton and Emma Amery (MYO). Credit - Meredith O'Shea

classic orchestral works from Jean Sibelius and Gustav Holst.

Humbly established in 1893 as a club to support young Victorians, the Newsboys Foundation has offered young Victorians opportunities to realise and develop their skills to their full potential.

Bob Urquhart, a former newsboy, said joining the Newsboys Club changed his life.


"The club was something wonderful for the thousand of kids who passed through its

doors," he said. "It helped them when they were struggling and it was a place where they could have fun, where they could learn valuable skills. It set a lot of us up for a better life than we might have had without it."

The *125BPM* concert will be held at Melbourne Recital Centre on Sunday, October 21 with tickets from \$12-\$18 including a booking fee.

For ticket bookings contact 9699 3333 or browse to [melbournerecital.com.au](http://melbournerecital.com.au)

## CONCERTS, PLAYS, EXHIBITIONS AND PERFORMANCES AT YOUR DOORSTEP

 [finearts-music.unimelb.edu.au](http://finearts-music.unimelb.edu.au)

Faculty of Fine Arts  
and Music







LUKE DAVID

# Pushing the limits

By Jacklyn Yeong

For Luke David, his passion for photography started when he first purchased a camera for a trip to Japan.

It took a lot of experimenting, practising and preparing to figure out how to use the digital single-lens reflex (DSLR) camera.

"When I first had the DSLR it was always on auto and I was amazed just with how far I could zoom it in," he said. "Then I tried to teach myself how to do all that aperture



Hong Kong.



Miko in Nikko, Japan.



IRruin.

and shutter priority stuff and then slowly learn how to go into manual and what ISO was and read as many materials to trial and practice with them until it became natural."

Submitting and winning several competitions with his travel shots gave a green light to Luke to continue pursuing photography. The affirmation inspired him to continue his "passion projects" during his travels.

Incorporating photography into his love for exploring new places also allowed Luke to kill two birds with one stone.

"Whether it's overseas or going to new parts of country Victoria, I like to travel and discover somewhere new," he said. "I do my research and kind of work out what I want to photograph and work out when the best time of the day is and, when I get there, I like to discover the place, the people and landscape."

His ongoing challenge was to develop a habit of being camera-ready at all times to capture the right moment.

"It is important to be able to grasp the right place at the right time, like the Miko

(shrine maiden) taken during closing time at a temple in Nikko," he said. "She happened to turn back just as I took this shot, if I wasn't camera-ready then I would have lost the moment."

Attending Photography Studies College (PSC) part-time has challenged Luke to go beyond his interests, which he found to be an important attribute in becoming a good photographer.

"We've done a lot of things like portrait shots which I haven't really done before and also still life and flash photography," he said. "So, I signed up with PSC because I was getting really specialised in a certain area and I want to learn everything that I didn't know."

He was able to enhance his photography skills through receiving words of encouragement and constructive feedback from his experienced tutors and peers.

For his portfolio last year, Luke converted one of his cameras to pick up reflected infrared light so that it displayed effects on different materials and fabrics.

"I've enjoyed taking those shots that gave it a sort of fantasy, sci-fi look," he explained. "My portfolio last season is kind of telling a story or a narrative about a post-apocalyptic world that was all shot in infrared so it feels like you're in a science fiction movie."

Luke recently made it into *Capture Mag's* Top 20 Emerging Australian Photographers 2018 with his six-piece landscape series from Hong Kong. It was also one of Luke's personal favourite series.

One stand-out piece from the series featured Montane Mansions - a rare architecture spot with four surrounding apartment towers that looked very close together when shooting from the ground looking straight up.

Luke has started working on a portrait series for his upcoming portfolio featuring people from the LGBTIQ community in their different walks of life.

He wanted to display the "pride" theme in a series of 12 shots by capturing what they are proud of doing in their daily grinds.

"Because I'm studying at PSC, for me it's a way to try and improve on something that I don't normally do," he said. "Also, it is to start a personal project that I would like to take forward."

You can check out more of Luke's work at [www.lukedavidphotos.com/portfolio](http://www.lukedavidphotos.com/portfolio)



TIME TO FOCUS YOUR PASSION FOR PHOTOGRAPHY



PHOTOGRAPHY STUDIES COLLEGE

Gain skills in time for your summer shooting

Landscape | Portrait | Street Photography & more

LAST PART TIME COURSE FOR 2018 STARTING OCTOBER

ARE YOU READY? CALL NOW TO FIND OUT MORE

[psc.edu.au](http://psc.edu.au)  
[info@psc.edu.au](mailto:info@psc.edu.au)

STUDY IN YOUR NEIGHBOURHOOD  
65 City Road, Southbank, VIC 3006

+61 3 9682 3191





# All he needs is a plug

by Rhonda Dredge

A failed robot, circa 2007, lies on the floor. He's carved out of wood and is human-like, with arms, legs, a torso, wooden blocks for feet and hands and an opening for a mouth and eyes.

He is a seeing and speaking robot but the other senses are missing. He has become obsolete.

Even a computer these days can respond to the human voice.

There have been huge advances since 2007. You can utter a command and have a robot deal with finances, security and vacuum cleaning. Feelings are another matter.

The spectre of the human imagination and its failings is the subject of the Ronnie van Hout retrospective at Buxton Contemporary, recently opened at the University of Melbourne to show the works of a private collector.

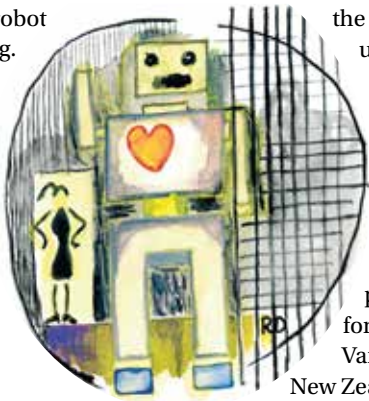
The gallery was open on the Grand Final holiday when most humans were away for a long weekend or living it up with their mates but there were robots, heads with missing noses and other strange creatures ready to mingle.

Dark humour does not shy away from the lonely and bereft. It invites you to partake.

The 21st century global citizen takes dreamscapes and moonscapes in its stride. "No-one is watching you" is the catchline for the exhibition, on for another month, and that is a disturbing, yet strangely liberating, thought.

After an encounter with the first failed robot, you enter an interrogation room for creatures that try and pretend they are human. An imaginary door opens in the electronically-sealed room, depicting an alternative reality in lurid lights that gradually fades into the distance.

The sound of an electric power station replaces the philosophical discussion of



the original installation upon which the robot interrogation room was based.

Melissa Keys has curated the show and she has worked with items in the Buxton collection plus shipped others in for the duration.

Van Hout is a well-known New Zealand artist and, even

though he has spoken to Keys in an interview for the catalogue, an exhibition leaves a lot unsaid. Often, subtle characters are being introduced.

Van Hout's embroideries on canvas are exquisite, particularly the profile of a man in a cap with stubble and a pipe.

How happy he seems, to be used in something important at last. He has a role, one that is revered within culture.

An artist who picks up on the pathos of those left behind by the dominant culture is at work here.

The old-fashioned robot is making its presence felt. It was naïve to think that a mere simulacrum could be taken seriously by humans. They are far too smart.

There is an obsolete banana man and a shack man as well. A more life-like replica of a human is pinned to the wall and is called *End Doll 2007*.

Humans and their expectations. Humans and their social mores. Tit for tat. Weddings. Divorce. Mates. They are not for this robot. All he needs is a plug.

*No-one is Watching You*, Ronnie van Hout, Buxton Contemporary, Southbank until October 21.



## Metamorphosis at Malthouse

By Sean Car

In Opera Australia's first ever show at the Malthouse Theatre, baritone Simon Lobelson will play a man-turned-insect in Franz Kafka's dark comedy *Metamorphosis* from October 25 to 27.

Like Opera Australia, this will be Simon's first time to the Malthouse and, in playing the tragic role of Gregor, his first visit to the Merlyn Theatre will be brief!

Gregor is a broken man, exhausted by eternal work and ungrateful family. Until one morning, he awakes and is not a man at all. Rather he is an insect whom, by the end of the play, "shrivels up and dies" according to Lobelson.

While that might sound like somewhat of a giveaway, Lobelson notes that Kafka makes no secret of the plot from the very beginning of his book, which paves the way for a dry, yet funny storyline.

"In the first sentence of his book, Kafka describes Gregor's transformation and he's never given away as to why," he said. "The story becomes more about the family dealing with it. In the end they can't, so Gregor just shrivels up and dies."

"The story ends with the cleaning lady disposing of his body and the family goes for a walk in the sun."

Playing the role of an insect, unsurprisingly, isn't without its challenges. Nor is performing an opera in a space as

small as the Malthouse, with Opera Australia used to the much more expansive State Theatre.

However, with a storyline and musical arrangement not becoming of a big stage, Lobelson said the Merlyn Theatre, transformed into a huge house built of scaffolding, would provide the perfect scene for his character to climb, crawl and scurry.

"It's a very three-dimensional, cinematic, draw-you-in kind of experience," he said. "It's essentially a chamber opera so it was wise to pick a venue that would draw out the piece's attributes."

"Although beautiful, it's very difficult music but the challenge is that you've got to move around a lot on the floors and climb on the walls and roof. The scenery dock is very dark, grungy and dusty."

Brian Howard's score is percussive, inventive and courageous. Conducted by Paul Fitzsimon, 12 musicians and six singers ratchet up the horror and pathos of this work: a story of social alienation in a modern, inhuman world.

Directed by Tama Matheson and designed by Mark Thompson, *Metamorphosis* as opera will make for riveting, shattering and morbidly fascinating theatre.

Tickets: [opera.org.au](http://opera.org.au)



Simon Lobelson.

## COMING UP IN NOVEMBER



### CELEBRATING BRETT DEAN

Fri 9 Nov 7.30pm

Iconic Australian works conducted by one of our great living composers, Brett Dean. Featuring the Australian premiere of a suite of songs from his superb new opera, *Hamlet*, performed by soprano Lorina Gore, tenor Topi Lehtipuu and the ANAM Orchestra.



### SYMPHONIC MOZART

Tue 13 Nov 11am

Enjoy morning tea with friends and a wonderful hour of musical treasures in the final concert for *Mostly Mozart* 2018. ANAM Orchestra performs Mozart's elegiac *Masonic Funeral Music* and his joyous and celebratory *Sinfonia Concertante*. - includes morning tea.



### SOLILOQUY

Thu 22 Nov 7.30pm

One musician. One composer. One dancer. *Soliloquy* transports you to a solo performer's internal world of secrets, fragilities and passions. With dancer Stephanie Lake, 60 volunteer performers and recorder virtuoso Genevieve Lacey performing Telemann's 12 Fantasies.



MELBOURNE  
RECITAL  
CENTRE

TO BOOK: 9699 3333  
[melbournerecital.com.au](http://melbournerecital.com.au)

CNR SOUTHBANK BLVD &  
STURT ST, SOUTHBANK

[f](https://www.facebook.com/melbrecital) [i](https://www.instagram.com/melbrecital) [t](https://www.tiktok.com/@melbrecital) [y](https://www.youtube.com/melbrecital) #melbrecital

PRINCIPAL GOVERNMENT PARTNER

CREATIVE VICTORIA





### MPAVILION

Until Feb 3 - Queen Victoria Gardens

MPavilion 2018, designed by renowned Barcelona-based architect Carme Pinós of Estudio Carme Pinós will be open to the public from October 9, 2018 through February 3, 2019 at the Queen Victoria Gardens. The four-month program comprises over 400 free events taking the form of MTalks, MMeets, MMusic, MRelay, MProjects and MKids.

[mpavilion.org](http://mpavilion.org)



### BERNADETTE ROBINSON

Oct 14 - Melbourne Recital Centre

Bernadette Robinson returns to the Recital Centre for a sparkling concoction of musical delights. Meet surprise guests (think Shirley Bassey and Julie Andrews) and delight in interpretations of songs from her favourite contemporary songwriters. Don't miss this final chance to see her before she leaves for London!

[melbournerecital.com.au](http://melbournerecital.com.au)



### TRUSTEES

Until Oct 21 - Beckett Theatre

Amid the chatter and outrage and belligerence of public conversation lies a void: the Great Australian Silence. Political theatre outlaws Natalia Kaliada and Nicolai Khalezin of Belarus Free Theatre have conceived an explosive new work with some extraordinary Australian performers: Tammy Anderson, Natasha Herbert, Niharika Senapati, Hazem Shammass, and Daniel Schlusser.

[malthousetheatre.com.au](http://malthousetheatre.com.au)



### ASTROMAN

Opens Oct 27 - Fairfax Studio

Step back in time to the 80s. Gary Ablett has just signed with Geelong. Cyndi Lauper blares through the stereo. And for gifted young teenager, Jimmy Djalal, the local video arcade is the place to be over summer. His mum knows better than anyone that Jimmy is a special kid with the world at his feet, but will he ever find the courage to reach for the stars?

[mtc.com.au](http://mtc.com.au)

### AUSTRALIAN MUSIC VAULT

Ongoing - Arts Centre Melbourne

The Australian Music Vault features a free, immersive exhibition showcasing Australian music, innovative digital participatory experiences and iconic objects from our Australian Performing Arts Collection.

[australianmusicvault.com.au](http://australianmusicvault.com.au)

### POLYPHONY

Until Jan 2019 - Cafe Vic Terrace

Artist Louise Paramor has created a group of four sculptures specifically for the terrace outside Cafe Vic in Southbank. The works, titled *Polyphony #1 - 4*, have been commissioned as part of a Contemporary Art Projects program. FREE.

[artscentremelbourne.com.au](http://artscentremelbourne.com.au)

### GUIDER TOURS

Until Oct 31 - Arts Centre Melbourne

Did you know Arts Centre Melbourne extends five floors underground?! Explore the labyrinth beneath the famous spire, including the grand State Theatre, and uncover the fascinating story of this 130-year-old entertainment precinct. Daily tours start at 11am.

[artscentremelbourne.com.au](http://artscentremelbourne.com.au)

### DESIGNING WOMEN

Until March 2019 - NGV

Spanning nearly 40 years, *Designing Women* highlights the ongoing role of female designers as a dynamic and critical force in shaping contemporary design culture. From fashion design, contemporary jewellery, and product design, to architecture and digital innovation.

[ngv.vic.gov.au](http://ngv.vic.gov.au)



### LEIGH HENNINGHAM

Oct 22 - Photography Studies College

PSC is proud to present Leigh Henningham, former pictorial editor for *The Age* newspaper. Leigh has worked as a professional photographer in and around Melbourne for over 30 years. From 1978 in the darkroom at the Melbourne Herald to then more recently *The Age* and now a freelancer. Over that period he has photographed Melbourne, its seasons, characters, and changing landscape, while riding the changes in technology.

[psc.edu.au](http://psc.edu.au)



### LYING STILL - REIMAGINED

Nov 7 - Salon

In her solo debut at Melbourne Recital Centre accompanied by vocalist Hannah Cameron and George Darvardis, Clio Renner plays an intimate one-off concert in the Salon, featuring re-interpretations of songs from *Something Left to Leave Behind*, and premieres off her upcoming album.

[melbournerecital.com.au](http://melbournerecital.com.au)

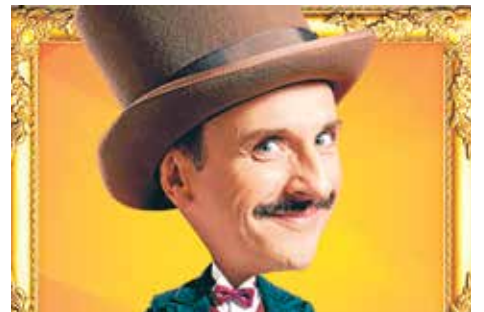


### EVA ROTHSCHILD: KOSMOS

Until Nov 25 - ACCA

Continuing ACCA's ongoing series of significant solo exhibitions by leading international artists, ACCA is excited to present a major show by Irish-born, London-based artist Eva Rothschild. Curated by Max Delany and Annika Kristensen, *Eva Rothschild: Kosmos* brings together new sculptural commissions with recent work spanning the last decade of the artist's diverse yet distinct practice.

[acca.melbourne](http://acca.melbourne)



### A GENTLEMAN'S GUIDE TO LOVE & MURDER

Oct 26 - Nov 18 - Playhouse

From award-winning playwright Aidan Fennessy (*What Rhymes with Cars and Girls*) comes a moving and thought-provoking new work that grapples with one of life's biggest questions. Directed by Peter Houghton (*The Odd Couple*) this empathetic and surprisingly humorous story navigates the politics and emotions that come with confronting the end of life and the solace we take in moments of unexpected joy.

[artscentremelbourne.com.au](http://artscentremelbourne.com.au)

## SOUNDPROOFING WINDOWS

FOR BODY CORPORATE AND HERITAGE LISTED HOMES AND APARTMENTS



NO NEED TO REPLACE YOUR EXISTING WINDOWS TO ACHIEVE DOUBLE GLAZING

Stop Noise will come to your home for a FREE demonstration and show you how we can reduce noise by up to 70% coming through your existing windows.

Stop Noise secondary glazing system is equally as good as replacement double glazed windows for your thermal insulation and twice as good for reducing noise. There is simply no better option. Save money on your energy bills and get a great night sleep.

Stop Noise is a trusted family owned and operated Melbourne based business since 1995.

VISIT US ONLINE! [WWW.STOPNOISE.COM.AU](http://WWW.STOPNOISE.COM.AU)

Call today to organise a free assessment of your windows & doors

1800 880 844

[info@stopnoise.com.au](mailto:info@stopnoise.com.au)



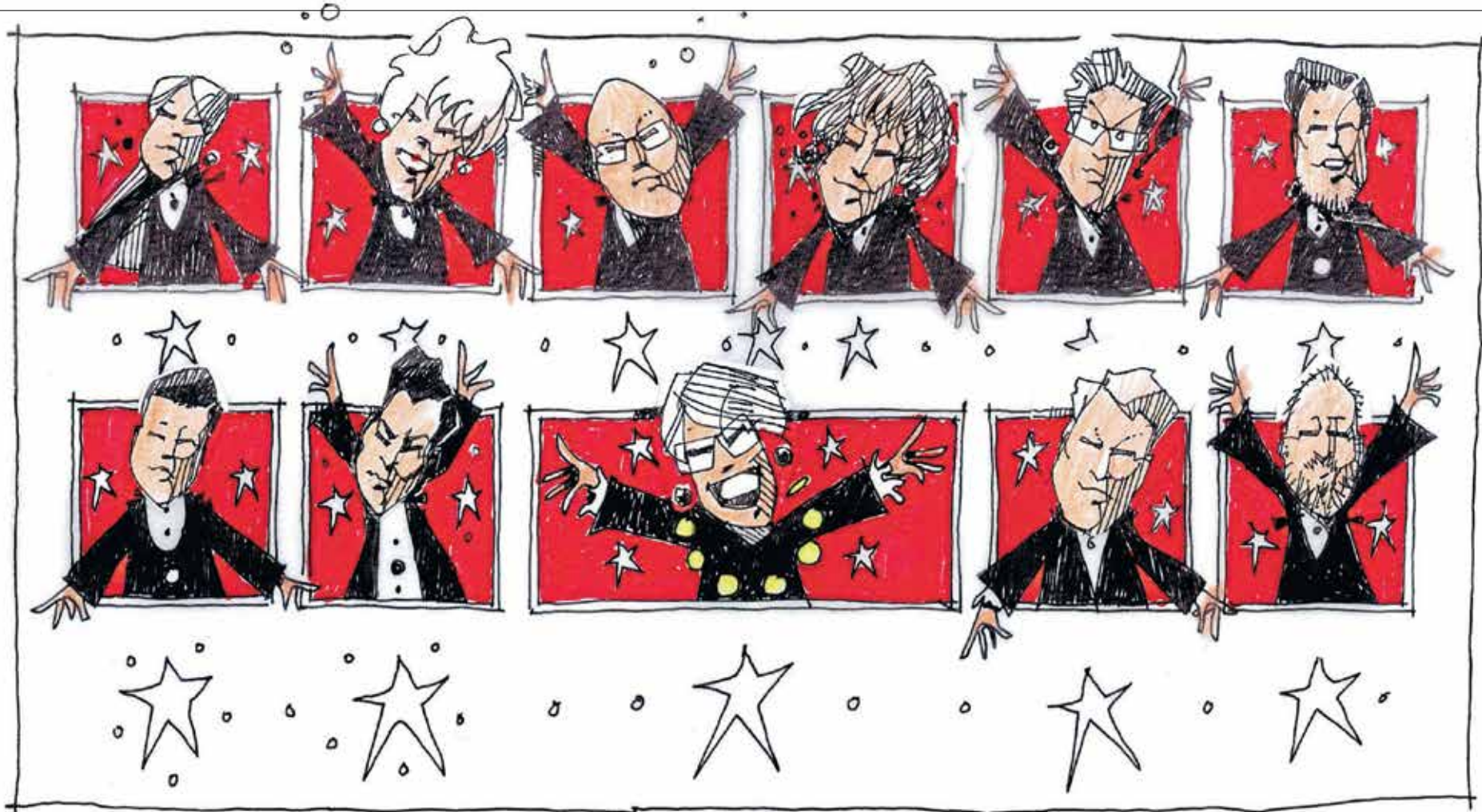
Office & Showroom- 15 Industry Blvd, Carrum Downs 3201





# Councillor second term report card

At the end of year two of the current council, Southbank Local News assesses the performance of Melbourne's 11 councillors.



## Lord Mayor Sally Capp

Brand new to local government, Cr Capp is "learning on the job" but is covering deficiencies with sheer enthusiasm and hard work. Exhausting to watch, she hasn't stopped running. And, being approachable, energetic, charming, open and welcoming, what's not to like? Cr Capp wanted the job more than her election rivals and is now using her incumbency to work towards the 2020 election (tensions emerging on this).

## Deputy Lord Mayor Arron Wood

Cr Wood impressed during the immediate post-Doyle era - rising to the challenge and steering an unsteady ship into calmer waters. Has grown in confidence and stature and is becoming more measured in response and when under pressure. Is increasingly assuming the role of the wise old head within the chamber - a mean feat for a young man.

## Cr Nicholas Frances Gilley

Is taking the role more seriously now that he knows more about how it all works. Has embraced the role of chair of transport and contributes welcomed and considered insights to debates.

## Cr Philip Le Liu

Hard to read on policy matters. Sometimes fickle but attempts to represent business interests. Needs to work on his verbal communication.

## Cr Rohan Leppert

Far more relaxed since the Doyle exit now that policy positioning has become fluid. Was bruised by a poor showing in the lord mayoral election and has adopted a more politically mercenary approach. Still the preeminent intellect in the council chamber.

## Cr Kevin Louey

Nothing to report (but that doesn't necessarily mean nothing's happening).

## Cr Cathy Oke

Steady in the job. Is loving her international leadership role on climate mitigation. Some constituents would prefer she spent more time on roads, rates and rubbish.

## Cr Beverley Pinder

Has returned without the constraints of having to answer to Robert Doyle. Confidence is up and is enjoying the job. Working hard on "the people" portfolio.

## Cr Nicholas Reece

The planning chair is also enjoying the freedom that a post-Team Doyle world offers. Now has a good understanding of planning.

Has become a mainstream media star. Still to reveal why he wanted to be a councillor in the first place - assume training for greener pastures? Is closely aligned with the new lord mayor.

## Cr Susan Riley

Another Team Doyle refugee relishing her independence. Is less afraid to contribute to debates.

## Cr Jackie Watts

Has gained the most from the realignment of the council in the post-Doyle era. Still remembers past injustices, but is more likely to be collegiate these days. From flying solo in the not-too-recent past, has had a majority of councillors come around to her thinking on the Queen Victoria Market - a remarkable change within 12 months. The renaissance councillor.

## Crime wrap



### Southbank flying saucers

Police are investigating after crockery was thrown from a high-rise apartment building in Southbank on September 8.

Investigators have been told a number of parked vehicles on Kings Way were struck by the flying debris about 6.45am

One vehicle had a smashed windscreen and headlight, and dents to the bonnet after being struck by what is believed to be white plates.

Police are keen to speak with anyone who witnessed, or has dash-cam footage of the

incident, in the hope of identifying which apartment the items came from.

### Deception

Police are seeking to identify a man after an alleged deception in Southbank on Thursday, June 14.

At around 8pm, a man visited a Southbank supermarket before allegedly using a stolen credit card to purchase items.

This credit card has been linked to several fraudulently-created bank accounts and loan applications.



Police have released CCTV images of a man whom they believe may be able to assist in their inquiries.

The man was wearing blue jeans, black sneakers, a blue t-shirt and a burgundy zip-up jacket.

### Assault

Transit police have released CCTV and hoping to identify a man after a car was damaged and a man assaulted in Southbank on July 2.

Police have been told a man was walking along City Rd when he kicked and damaged a car about 4.30pm.

He then approached an unknown man and pushed him over a parked scooter.

The offender is perceived to be Caucasian in appearance and aged in his mid-20s.

He was wearing a dark-coloured jacket, grey tracksuit pants and carrying a backpack. Investigators have released an image of a man that may be able to assist with their enquiries.

Police are yet to speak to the victim and urge him to come forward.



# Liberals and Nationals ship sheep

During the last parliamentary session, the Liberals narrowly defeated legislation that would have phased out live exports of sheep.

After *The Animal Export Legislation Amendment (Ending Long-haul Live Sheep Exports) Bill 2018* passed the Senate, Labor's Shadow Minister for Agriculture, Joel Fitzgibbon, moved a motion to have legislation to ban live sheep exports come to the House immediately.

Labor gave the House of Representatives the opportunity to phase out the live export trade of sheep and the Morrison Government failed the test.

Sadly, a small group of conservative MPs who had pledged to vote against this cruel practice. Liberal MPs Sussan Ley, Sarah Henderson and Jason Woods reneged on their commitment to vote with us to phase out the live sheep trade.

Sussan Ley and Sarah Henderson, when introducing their Private Members Bill to give effect to a phase out the live sheep trade, gave impassioned speeches. They talked about the horrors of this trade and said there were no other choices but to ban it and that the quicker it happened, the better off we would all be.

Mr Fitzgibbon said: "Sussan Ley and Sarah Henderson gave up their convictions yesterday. They took their promotions in the new Morrison Government and they

## Live export ban backflip

They threatened to cross the floor to stop the trade they felt was so heinous. But when it came to a vote yesterday, Liberal MPs Sussan Ley and Sarah Henderson used their deciding votes to prevent a ban on the live animal export trade.

As backbenchers the pair led a government backlash against the live export trade and even proposed their own bill to stop the trade.

That was within grasp yesterday, when a private member's bill sponsored by the Greens and cross-

benchers to stop the trade passed the Senate 31 votes to 28.

Just two votes were required to approve it in the House of Representatives but Ms Ley and Ms Henderson voted against moves to bring it on for debate.

To cross the floor, they would have needed to quit their ministerial positions.

The pair then also rejected Labor attempts to bring on a debate in the House on their own bill. Their two votes made the difference, with the bill going down 70-72.

Latika Bourke

*The Age, Tuesday 11/9/2018 Page 5*

put those promotions ahead of the welfare of animals and, of course, ahead of the view of the Australian community. They should stand up, stand by their convictions, return to their original positions and join Labor in

voting for the phase out of this trade." The Abbott-Turnbull-Morrison Government's record on animal welfare is appalling.

They abolished the Inspector General of Animal Welfare and Live Animal Exports; they abolished the National Animal Welfare Strategy; they abolished the animal welfare unit in the Department of Agriculture; they abolished the CoAG Committee that deals with animal welfare issues; and they sent a clear signal to the regulator in the live export trade that "there is nothing to see here" and they should take a light touch approach.

It is very clear now that there is only one way to phase out the live sheep export trade and that is to elect a Shorten Labor Government.

In addition, there is only one way to restore government accountability and public accountability on animal welfare issues and that is to elect a Shorten Labor Government.



**Michael Danby**

Federal Member for Macnamara

[michael.danby.mp@aph.gov.au](mailto:michael.danby.mp@aph.gov.au)

**Labor wants to end animal cruelty, including banning live sheep exports.**



Labor will stop the northern summer sheep trade at the first opportunity and phase out all live sheep exports.

Labor will create an Inspector General of Animal Welfare

Labor will create an Independent Office of Animal Welfare to protect ALL animals.

**Labor has a plan to end the cruelty, support our farmers and create more jobs right here in Australia.**

**But we need your help.**

Image via Animals Australia: Aboard the Emanuel Exports ship from Fremantle to the Middle East in August 2017.

**Labor**



**Sign the petition: [alp.org.au/act\\_on\\_live\\_exports](http://alp.org.au/act_on_live_exports)**

AUTHORISED BY MICHAEL DANBY MP - FEDERAL LABOR MEMBER FOR MELBOURNE PORTS - 117 FITZROY STREET, ST KILDA WEST



## Southbank Residents Association

# Here we go again

Our seat, Albert Park, is currently held by the ALP's Martin Foley by just 3 per cent.

Southbank Residents Association (SRA) will again be holding a "meet the candidates" event to allow the local community an opportunity to ask the hard questions and hear what is on offer.

Owing to our very similar challenges, this year we are joining with the Montague precinct of Fishermans Bend.

This event will be moderated by Walkely Award-winning journalist, former councillor and founder of **Crikey.com**, Stephen Mayne.

In this forum four years ago, the predominant issue was planning. At that time, we had Matthew "Mr Skyscraper" Guy as the Liberal Planning Minister, whom many would argue was haphazard.

I considered him not too friendly to Southbank, therefore the Liberal candidate had a difficult vision to sell let alone to win our trust. But having said this, we did receive assurances from Martin Foley that if a Labor government was elected, it would respect the overshadowing rules for the Yarra River and Shrine of Remembrance.

To the Labor Party's credit, it did - at least for one application at the beginning of its term. It forced the reduction of six floors from the Collins St CBUS development that was destined to overshadow the river and put the promenade into shadow during its most lively part of the day.

The Planning Minister, Richard Wynne, then went on to do a review of the built form in the Capital City Zone (which includes Southbank) which was received positively by the Southbank community, mainly through its clarity of what is expected.

However, we were left feeling like mugs after the Minister, within six months of approving the new planning scheme, ignored it, contradicting almost every facet of it, including overshadowing of the Shrine, to give a "state significance" exemption to Crown Casino to develop the site at 1 Queensbridge St - and at significant discount to the previously-legislated community benefit.

And let's not forget the precedent now set for developments within the Southbank Village or Arts Precinct owing to the

minister's failure to apply mandatory height controls despite SRA lobbying for these controls.

In my opinion the issues affecting Southbank haven't changed much and there is much that can still be done.

I think anyone who has a solution for the placarded and livestock trucks that are forced onto Power St and City Rd to take an alternate route to the Burnley Tunnel, would win votes.

While the Labor Party has committed \$500 million to start the Arts Precinct upgrade, much more is needed. I wonder if any of the parties see this as a worthy project to try to win voters in Southbank?

My number one question to all candidates would be about their position if Crown requested an extension to its planning application for 1 Queensbridge St. The Liberal Party condemned Labor for approving the application, so would it put its money where its mouth is and not renew any request for extension?

Here is an opportunity to not only review a development proposal that should never have been approved under the existing legislation, but to also save some Southbank heritage AND overshadowing of the Shrine of Remembrance. This is certainly a difficult position for any candidate, especially if Crown has donated to their election campaign! I guess that could be a follow-on question!

I encourage the residents of Southbank and Montague to come along to Boyd Community Hub, 207 City Rd, Southbank, at 6pm for a 6.30pm start.

You can register your intention to attend at [sra-mtc-vic2018.eventbrite.com](http://sra-mtc-vic2018.eventbrite.com)



**Tony Penna**

Tony Penna is the president of Southbank Residents' Association.

[southbankresidents.org.au](http://southbankresidents.org.au)



## St Johns Southgate

# That's awesome!

I flew on an aeroplane the other day. There's nothing extraordinary about that, you might think, and you'd be right in one respect.

Yes, like most of the people on the flight, I hooked into my device and zoned out for the entirety of the journey.

But looking at it another way, the flight was rather extraordinary! There I was, with a couple of hundred other passengers, inside a metal tube that was pushing its way through the clouds.

We were zooming towards our destination by a means once reserved for the birds. That is pretty incredible! Even so, I didn't bother to look out the window, even once.

If you can relate to my groanful toleration of air travel, and I suspect that many of you can, then I think it's fair to say that we've lost a sense of awe. But even if you're an aerophile, I'm sure the absence of awesome is revealed in some other way, like "Oh, a double rainbow, that looks great ... but I've got to check my notifications on Twitter".

I tend to think that as all conquering, top-of-the-food-chain, 21st century creatures, we've become accustomed to the idea that we are the highest power. We've become like gods ourselves, so what is there to be awed by?

Sure, there are those things that can still take your breath away. The Grand Canyon, Uluru, or the night sky when you're hundreds of kilometres from any light pollution for instance. Certain things can leave us impressed by the universe, yes, but in a different way than they used to - at least in the Judeo-Christian tradition.

It used to be, to invoke the psalmist, that the heavens declared the glory of God. It used to be that we were truly awed, not just by the sights before our eyes, but by the divine creativity behind them.

Being impressed by the universe alone is fine, but it's insufficient for the building of a vocabulary around awe and for growing the capacity to fully experience it. Because, to put it simply, the universe itself can't respond to our gasps of, "Wow!"

For millennia, sacred writings have

opened up the conversation around the things that we, on our own, find too beautiful, too confusing, or even too horrifying for words.

The great religious texts of the world have allowed readers to process those things, which we struggle to process on our own. On top of that, holy writings have allowed, and can still allow us, to share the jaw-dropping experiences of life with others, even those buried many moons ago.

Shakespeare's Hamlet famously uttered, "Words, words, words" as if they didn't matter when, truth be told, they do - and not just for our self-annunciation but for our reception of the other and the revelation of God's glory.

Admittedly, as a Christian minister, I'm biased. But I do believe that if we tap into the sacred writings of the world, we (myself included) might relearn the language of awe.

Because, in the words of scripture, we can discover depth, form and substance to things otherwise inexpressible.

Holy words make us more able to say, "That's awesome!" about things truly worthy, instead of assigning such glory to things as fleeting and trivial as the latest *Game of Thrones* episode.



**Tom Hoffmann**

Tom Hoffmann is the pastor at St Johns Southgate Church.

[www.stjohnssouthgate.com.au](http://www.stjohnssouthgate.com.au)



**St Johns**  
Southgate

Sunday 28 October

9am **Worship with Bach Cantata**

Es ist das Heil uns kommen her (BWV9) for 4 soloists, chorus, strings, oboe d'amore, flute and continuo  
St Johns Bach Choir and Orchestra directed by Albrecht Koch

Domkantor, Freiberg, Saxony, Germany  
2018 St Johns Visiting Music Director

8:30am *Cantata in Context*: pre-service talk

Every Sunday

9am Traditional worship with communion

10:30am Sunday School during school terms

11am Informal worship with communion

6pm Sunday Night at St Johns

Informal contemporary worship hosted by Lutheran Students and Friends

The chapel is open daily for private prayer and reflection



Metro Tunnel



# Building Anzac Station

Works to build the Metro Tunnel's new Anzac Station under St Kilda Rd are progressing.

A bentonite plant is temporarily installed on the worksite and supports the construction of diaphragm walls (d-walls). Bentonite is liquid clay that is pumped into the d-wall's steel cages, which are lowered into trenches up to 25 metres below ground. Concrete is then poured into the trench as the bentonite is removed and recycled. The completed d-walls act as supporting underground walls for the station before further excavation can safely begin.

On the Yarra Main Trail, just beneath Princes Bridge, site investigation works are taking place throughout October to assess ground conditions. This information will inform the design of the twin tunnels which will run under the Yarra River towards the new Town Hall Station under Swanston St.

A family of ducks made their way to the construction site in early October. Our crews were on hand to escort the mother and her eight ducklings to safety at Albert Park Lake.

## Traffic changes

Bowen Lane is closed at St Kilda Rd until early November to realign the service lane between Bowen Lane and Albert Rd. This work will create a larger construction area for works in that area. Pedestrians along St Kilda

Rd outside Melbourne Grammar School can now travel through a newly-installed covered walkway. This provides a safer path for pedestrians while works take place to construct the station walls.

Changed traffic conditions are now in place near Federation Square as works ramp up to build an entrance to Town Hall Station on the corner of Flinders and Swanston streets. Flinders St is reduced by one traffic lane westbound between Russell and Swanston streets for up to four years from October, but traffic can still turn left and travel through the intersection towards Elizabeth St.

The lane closure allows the station entrance to be safely constructed. Motorists are encouraged to plan ahead and allow up to an extra 15 minutes if travelling through this stretch of Flinders St.

Pedestrian access around the intersection and into Federation Square's businesses, restaurants, cafes and bars is maintained. Cyclists can still move safely around the precinct, with the St Kilda Rd bike lane realigned. Fencing has been installed and ramps built to provide disability access around the site. The former Melbourne Visitor Centre is being demolished to make way for the station entrance. The City of Melbourne unveiled its new visitor hub at Melbourne Town Hall in August.

All works at Federation Square are being undertaken with the relevant approvals.

For more information on Metro Tunnel works, visit [metrotunnel.vic.gov.au](http://metrotunnel.vic.gov.au) and to plan your journey, visit [vicroads.vic.gov.au](http://vicroads.vic.gov.au)

Owners' Corporation Law

# Electric vehicle charging and the rise of the machines

Australia lags behind the rest of the world in the uptake of new electric vehicles.

We even lag behind our southern cousins in New Zealand, who now boast more electric vehicles per capita than Australia, despite having only a fifth of the population base. Despite this statistic, by 2030 it is reported that 50 per cent of new car sales in Australia will be for an electric vehicle.

With the massive surge in demand for electric vehicles corresponding with high petrol prices and road tax user charges, there shall be a corresponding surge in demand for apartment complexes to retrofit its basement car parks to provide the necessary charging stations.

This brings a myriad of issues and challenges for owners' corporations (OCs) to overcome in managing the costs of installation. The most obvious challenge is this: not all owners have carpark spaces, and not all owners even own cars or will own cars in 10 years time.

This might mean that simply raising levies on a lot entitlement basis to install basement charging stations will be inequitable and unreasonable.

Conversely, common property infrastructure in the form of meters and supply boards shall need to be upgraded in order to meet the surge in capacity for electricity supply. So at least on some level, even if all owners don't have a car parking space (or a car) the OC itself will need to bear some of the upgrade costs for its electricity infrastructure.

A user-pays system has merit. Under this model, owners who wish to keep an electric car shall pay the costs of installing the charging station within their basement parking space, and should pay a fee to the OC (to be held in escrow as a form of differential levy) to fund the costs of the upgrades of the common property power

supply boards (when these are required).

There are also the issues about where the meters are located. Some apartment buildings have their meters installed on the floor of where their apartment is located. Now, if an owner resides on the 27th floor of a building, it is going to cost a fortune to run cabling and conduit from the basement to connect to their meter.

Again, technology is going to have to intervene to resolve this "barrier to entry" issue. Separate meters are going to have to be installed in the basement (perhaps on common property, if space permits) in order to allow for charging stations and meters to flourish.

Alternatively, OCs could partner with renewable energy companies to install charging stations which can effectively be plugged into a separate meter, but are activated by way of an account login.

This way, the electricity costs are charged directly to the owner (perhaps by way of direct debit each month).

OC committees should start planning now for these upgrades. The simple message is that the technology has arrived and the technology is cheap, so long as it is rolled out in large scale and is able to penetrate the mass market.

The times, they are a changin' ...



**Tom Bacon**

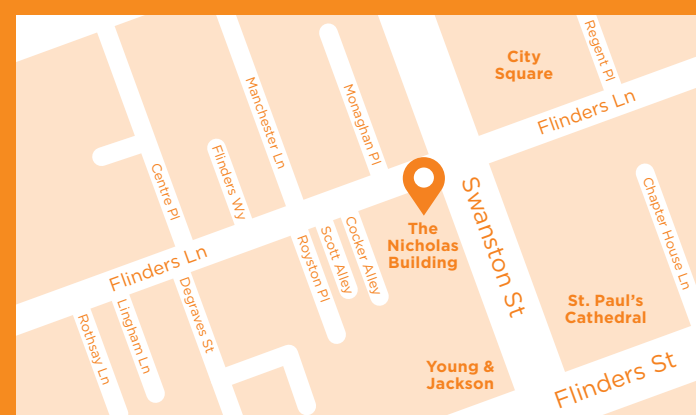
Tom Bacon is the principal lawyer of Strata Title Lawyers. [Tom@stratattitlelawyers.com.au](mailto:Tom@stratattitlelawyers.com.au)

# Open for business

## The Nicholas Building

Throughout construction of the new Town Hall Station, the Nicholas Building will remain open and accessible from Swanston Street and Flinders Lane.

Please continue to support your favourite Nicholas Building businesses. For more information visit [metrotunnel.vic.gov.au](http://metrotunnel.vic.gov.au) or call 1800 105 105.



More trains, more often





## Montague Community Alliance

# At last, a Fishermans Bend Framework!

On Friday, October 5, the Minister for Planning, Richard Wynn, released the Fishermans Bend Framework plan.

The overwhelming reaction from the Montague community has been positive to the lower heights, although the word discretionary does makes us a little queasy!

And lessening the number of towers to allow for more street level community activity, with the development of arts and community hubs is a great addition.

These community hubs will continue to ensure current and future communities engage with each other and further develop our already dynamic neighbourhood.

The exact words in the Framework for the Montague Precinct are to develop ...

"A diverse and well-connected mixed use precinct celebrating its significant cultural and built heritage, and network of gritty streets and laneways."

Of course, Montague will still have towers, but there will be differences of heights within the precinct.

The Framework describes North and South Montague – North being the area abutting Normanby Rd, which will continue to have buildings of up to 24 storeys, like the Gravity Building (corner of Montague and Gladstone streets).

South Montague will have low to mid-rise ranging from four to 20 storeys, like the Nightfall building in Gladstone St. Happily, Buckhurst St is to become a "green spine" with heights up to 12 storeys and a bike track connecting Bay St with the city.

Developers will have a short period of time to resubmit their plans to fit within these new guidelines. Obviously, there are some permits that have already been issued for towers up to 30 storeys in the precinct and, hopefully, these will be developed sensitively with great design to fit in to the revamped Fishermans Bend Framework.

There are many things for us locals to be content with, and there are some that need more attention such as the lack of parking

for existing workers and residents, the 109 tram that is already over-crowded and the increasing amount of recently-arrived residents and workers using the streets and parks and how that is impacting the environment.

We look forward to the more detailed precinct plan and to continuing to develop our Neighbourhood Agreements with the relevant stakeholders.

Please don't forget we have an "Interrogate the Candidates" meeting on October 30 at The Boyd Community Hub in City Rd at 6.30.

This is a free event but you will need to register with Eventbrite ([sra-mtc-vic2018.eventbrite.com](https://www.eventbrite.com)). Please book early as places are limited and you will have an opportunity to directly question the three state candidates – Martin Foley (ALP), Andrew Bond (Liberal) and Ogy Simic (The Greens).

We are delighted to be collaborating with the Southbank Residents Association on this event and look forward to seeing you all on the 30th.

## Meet a Montaguan...

### Who are you?

I am Memuzin River, a Kurdish/Egyptian Australian. I was educated at the Baltara and Turana Juvenile Detention Centres and on the streets. In my youth, I met Father Bob who gave me a stable home and, with his help, I went to school and eventually did a BA at Melbourne University.

I have worked on and off in the community services/care sector for 30 years and I'm also a social and environmental activist, a documentary film maker and a musician/composer.

Currently, I'm the CEO of The Father Bob Maguire Foundation based in the Montague Precinct (MP).

### What brought you to work in Montague?

In 1970, my family moved to South



Memuzin River.

Melbourne from occupied Kurdistan. My mother and father worked in Montague, which in the 1970s was the gateway to the vast and expansive manufacturing sector of Fishermans Bend.

It was my 'hood, so after my family moved to the western suburbs, and because I knew lots of local Turkish and Kurdish kids I would keep coming back, squatting and sleeping among the shrubs and dunes at Port Melbourne beach. In 2013 Father Bob started a warehouse community pantry and outreach centre in the Montague Precinct and five years ago he asked me to come back to work with him. I have now married a local lady, Josephine Lettieri and we have two-year-old son.

### What are the best or most interesting things about working in Montague?

The most interesting thing I've seen is the transformation of the area. It's like jump-cuts of a film. Every time I've come back, the area has sort of gentrified just that little more. I say kind of gentrified because the area was quite grungy and run down (in the 70s and 80s). Now some of those same people are the people living in the gentrified version of the same tiny cottages worth more

than \$1.5 million.

### How does working in Montague affect your quality of life, including your work?

This was my 'hood and it makes me feel good being here, I feel quite grounded and at ease and it's a comfortable fit for me. At the same time, I see people coming to Father Bob's warehouse in MP for help. I have known a lot of these people for a long time, and see that they and their children are poorer than when I first knew them.

So, I suppose it's a strange kind of balance, nostalgia, feeling grounded, at ease and yet sad to see people that haven't moved on, or up, or in fact have the quality of their lives decline.

### What are the challenges of working in Montague?

The challenges are how to build a cohesive community when there are the disadvantaged in social/public housing, wealthy residents and those who come here to work. This the long-term objective, to bring people together and see our community become cohesive while respecting and celebrating diversity in an equal opportunity environment.

### What would you change about working in Montague?

More affordable housing. Currently, the area lacks the middle socio-economic demographic. To live here one is either very poor, or wealthy and this makes it hard for the community to integrate. The differences between people are too significant. We need a middle way.



### Trisha Avery

Trisha Avery is the convener of the Montague Community Alliance.  
[trishavery@bpca.com.au](mailto:trishavery@bpca.com.au)



## Safety & Security

# Stifle the opportunity

I was pleased to see the official crime statistics showing a reduction in person crime in our response zone.

I could tell you it's within all the corporate targets etc, etc, but the reality is that crimes affect people directly. Crimes like assaults and robberies are always the most traumatic and therefore are the crimes that we have a real focus on reducing.

Don't get me wrong, we focus on reducing all crime but a reduction in these crimes is particularly pleasing and one that we will continue to focus on, particularly as we come up to the silly season.

A lot of property crime such as theft and theft from motor cars are what we term as predominantly opportunistic crime.

What that means is that, generally speaking, the crimes are not planned – they occur on a spur of the moment when an opportunity presents itself.

Not many offenders actively go out thinking that they will break into a car – it's more likely that they will be on their way somewhere (perhaps to commit another crime) and they see an opportunity. So, if the opportunity is taken away, then there is less chance that the crime will occur.

To avoid being that victim, don't leave anything on view in when you park your car and always have a grip on your handbag or phone.

I have walked around car parks and past cars parked on the street and have seen coins in the centre console, handbags left on seats, computer bags left in footwells etc. Even if there is no computer in that bag or nothing of value to you in the handbag, you are still suggesting to the offender that it may

be worthwhile breaking in to your vehicle.

Even gym bags left in view are tempting because, whilst you know that it only contains your smelly gym gear, the offender is wondering if there is a wallet or a phone etc in the bag.

It's the same when you're sitting at a cafe or somewhere public – don't leave your phone on the edge of the table as it is just too tempting for someone walking by to grab it. Handbags at the side of your chair are the same.

It seems so obvious to me but we have people reporting these sort of crimes to us all the time. So when you're parking your car, think about what is on display and when you're out and about enjoying Southbank keep a hold of your phone and handbag

wherever you may be.

If you have a question around policing in the Southbank Area please feel free to send them to me at [southbank-uni-oic@police.vic.gov.au](mailto:southbank-uni-oic@police.vic.gov.au). I will try to answer as many as I can and will print some in future additions of SLN.

Quote for the day: Behind every great man is a woman rolling her eyes .... *Jim Carrey*



### Senior Sgt Steve Bills

Station Commander at Southbank Police Station  
[steve.bills@police.vic.gov.au](mailto:steve.bills@police.vic.gov.au)



We Live Here

# Cladding – remove now, pay later?

Apartment buildings across Melbourne are finding that it can cost hundreds of thousands or even millions of dollars to remove combustible cladding.

We await feedback from owners who are tempted by the state government's offer of cladding "rectification" loans that can be paid off through council rates.

Planning Minister, Richard Wynne, has been reported as saying "these financing agreements allow cladding to be removed quickly, without affecting property prices".

While we can hope these loans will be readily accessible and not tangled in red tape, the property prices have already been affected, Mr Wynne!

On top of that, We Live Here is hearing that builders are charging a pretty premium for any project related to the C-word – with abashed building companies that installed the cladding in the first place now finding the word "cladding" oddly ineffable.

Speaking of premiums, ignored by all governments is the devastating effect that cladding has had on insurance premiums, with eye-watering increases just adding to the already huge financial burden on owners.

Perhaps we need a royal commission on cladding gouging, inviting builders and insurance companies to "rectify" themselves?

## Cladding in the courts

With \$24 million at stake, Lacrosse apartment owners have instituted legal action against some heavy hitters in the building industry. Four years after a major fire ravaged their building, owners are still seeking to have cladding removal paid for by the parties responsible. Just who is responsible is the big question.

The legal action by Lacrosse owners is against eight parties including the builder, building surveyors, architects, and fire engineers.

Notably absent from the invitation list is the developer (a \$2 holding company) and perhaps for obvious reasons, the state government.

The legal action has spawned a flurry of accusations and counter-accusations in the media as the targeted parties position themselves for a lengthy, expensive legal stoush.

Meanwhile the hapless owners pick up the tab, with apartment values having reportedly dropped at least 30 per cent and some lenders calling in debts on the basis of diminished loan to value ratio.

## We Live Here - representing owners and residents

We Live Here has been successful in giving a voice to owners and residents. We have developed ongoing and cordial relationships with politicians across the spectrum with the aim of making sure that owners and residents are heard.

We Live Here also offers support in this column to business interest groups where we believe they may help the cause of apartment residents and owners.

Recently one such business group, Strata Community Australia (Vic) (SCA), started a campaign to influence political policy in the lead up to the state election.

Since news of the SCA campaign started circulating We Live Here has received many enquiries from those wanting to know what our position is on this issue.

What we can tell you is this:

Strata Community Australia (Vic) (SCA) is the peak industry body for owners' corporation managers in Victoria, i.e. SCA represents businesses that manage the apartment buildings in which 1.6 million Victorians live.

We Live Here was created in 2015 to give a voice to residents who live in these apartment buildings, and for whom it is their home.

There will be some but obviously not complete alignment between We Live Here, representing residents and a group that represents management businesses.

For example, We Live Here is in complete agreement with two of the three issues in the SCA campaign:

The long-overdue reforms to the Owners Corporation Act 2006 which commenced in 2015 by the Department of Consumer Affairs as part of its Property Law Review, but still has not surfaced despite being promised in early 2018; and the vexed issue of combustible cladding, and who should take responsibility for paying to replace defective material.



[www.welivehere.net](http://www.welivehere.net)  
emails to [campaign@welivehere.net](mailto:campaign@welivehere.net)

## Pet's Corner

# Enter the "Shiba Zone"

By Jacklyn Yeong

Hero is an energetic Shiba Inu with a distinct black and tan coat. However his attention spans from highly alert to forgetting his name the next minute.

His hobbies include eating, sleeping and taking walks in that particular order. Hero could be found sneakily lounging near his snack area where his parents would oftentimes catch him with his head buried deep in a bag of treats.

Hero's "dad", Dan said Hero performed the "Shiba 500" when excited – a common trait among the breed – involving Shiba running at full speed, victory lap style.

"He would sprint around the apartment and leap on couches, it takes a little while for him to calm down," Dan said. "It happens randomly, sometimes even after a long walk."

When walking Hero, both his parents rarely put him off-leash, as Hero had a history of wandering off by himself.

"Our boy loves daydreaming. It's adorable but a pain at the same time," Hero's "mum" Brenda said.

"When this happens, we have to speak in a commanding tone to snap him out of the Shiba Zone."

While his "parents" were describing him, Hero's eyes seemed to be trying to say "Surely they must be talking about another dog ..."



To catch more of Hero's goofiness online, you can find him on Instagram with the handle [@herotheshibey](https://www.instagram.com/herotheshibey).

THE MOST EXCLUSIVE ESCORT AGENCY

# Paramour

OF COLLINS STREET

Dinner Companions  
Social Escorts  
Sensual Ladies

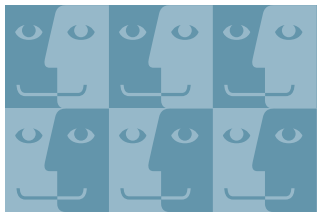
CITY CENTRE  
Melbourne's exclusive entertainment service.  
Highly recommended for our interstate and overseas visitors.

[paramour.com.au](http://paramour.com.au) CBD - 5 MINUTES TO YOUR DOOR

96546011 たくさんの美しい女性 日本語を話します

Call or book at [rsvp @ paramour.com.au](http://rsvp@paramour.com.au)  
MELBOURNE CBD SWA113E





# SOUTHBANK FACES OF



**ROB HAMSON, 69, MCKINNON, RETIRED**

I only watch the AFL during the finals but I'm very pleased with the result.



**JASON MURPHY, 33, MORDIALLOC, FINANCE**

Collingwood was in front for the whole match, I would have preferred Collingwood to win because it's a Melbourne team but the West Coast did a good job. It was a good game.



**TREVOR LIDDELL, 66, ADELAIDE, MANAGER**

It was an excellent game to watch for a footy fan. I thought that both teams did a really good job.



**PATRICK JAMES, 21, PERTH, RETAIL**

Fantastic, it was one of the best matches as both teams were so close. 20 minutes in and it was a bloodbath but the Eagles slowly made their way and eventually won the game. I'm super proud.



**HEATHER CHILDS, 56, PERTH, RETIRED**

Best result ever. I have always been a West Coast fan. I came all the way from Perth to watch the game and I thought they delivered the best game ever.



**AMY ZUANG, 27, CBD, STUDENT**

I don't really know much about it because I'm visiting from Luxemburg, but everyone seemed to be very excited about the game, especially during the last weekend.

## Question:

**What do you think about the AFL grand final result?**

*Top Class*  
of Collins Street

open 24/7 |  
sexy & wild |  
genuine escorts |

PCA113E

www.topclassofcollinsstreet.com.au

**Call 03 9654 6351**

# SOUTHBANK SUDOKU

Last month's Sudoku solution

T	B	H	S	U	A	O	K	N
A	U	K	O	N	B	H	S	T
N	S	O	H	K	T	A	U	B
H	O	U	N	A	S	T	B	K
S	T	A	B	H	K	N	O	U
B	K	N	U	T	O	S	H	A
K	H	T	A	O	U	B	N	S
U	N	S	T	B	H	K	A	O
O	A	B	K	S	N	U	T	H

*A variation of Sudoku, with the letters SOUTHBANK replacing the numbers.*

The rules are the same as regular Sudoku, each line of the must contain the letters 'SOUTHBANK' as must each 9-square box. This Sudoku is MEDIUM-HARD!  
Good Luck!

			T	B			A	
U	T			N		H		
					O	T		
	B	K	N					
		T				N		
					H	U	O	
		B	S					
		U		K			N	O
	A			O	U			



Southbanker

# Walking for a purpose

By Niccola Anthony

When Thomasine Warmington was in her mid-20s, she lived in a share house on Southbank Boulevard that overlooked the coroners court and the adjoining mortuary.

Emergency services and mortuary staff would be visiting the site at all hours of the day and night, which made for an interesting living experience.

One day, Ms Warmington was coming home from work when she noticed a rabble of journalists outside the court.

She walked inside her flat to find the TV news on and an explanation for the situation unfolding outside. Carl Williams had been stabbed in prison and his body had been transported to the morgue just moments before.

Despite the sombre surrounds of her Southbank Boulevard abode, Ms Warmington wasn't dissuaded from living in the area. In fact, her love for Southbank only grew.

Now, having lived in the area for 10 years, she considers herself a Melburnian through-and-through – an admission that might be difficult for her Perth-based family to stomach.

"I went back to Perth one time and was looking for peppermint tea and sparkling water. It was then that I realised I may have become a Victorian," Ms Warmington said.

But it isn't just Ms Warmington's preferred choice of beverage that keeps her on the east coast. The multicultural "vibe" of Melbourne also has a lot to do with her decision to stay.

"I think, in general it's a very multicultural city. It's a really nice, easy place to live and



Thomasine Warmington.

I think, in turn, that vibe shapes you as a person," Ms Warmington said.

"I'm very proud to live in Melbourne."

Ms Warmington fondly remembers a time, a few years ago, when she was invited to one of Southbank's famed Welcome Project dinners at the Boyd Centre to welcome new migrants to the area. Attendees bring along a plate of food to share with the group, while sharing stories from each other's homelands.

"It was crazy meeting all these people that lived in Southbank. It's not the type of place

where you think about making friends with your neighbours and community but it was quite cool," Ms Warmington said.

Over the past 10 years, Ms Warmington has certainly grown to appreciate the unique community feel of Southbank, despite the suburb's proximity to the CBD.

That community feel has been strengthened in part by an established friendship group in the area between Ms Warmington and her closest friends, one of whom is a sufferer of epilepsy.

Laura Bullock has struggled with the condition for over 20 years. Her daughter Maggie suffers from a rare condition involving infantile spasms, which is unrelated to Ms Bullock's own condition.

"Within our group of friends, we actually all used to live in Southbank. [The Bullocks] used to live on Kavanagh St. We all used to geekishly call ourselves 'The Family' and where they used to live was called 'The Nest,'" Ms Warmington said.

Ms Bullock is often unable to come to catch-ups between the friendship group due to complications with her condition.

"I think to see that real interruption in her life and then even some of the things she went through during her pregnancy with Maggie, you want to do anything you can to provide support," Ms Warmington said.

It was this determination to support her close friend that compelled Ms Warmington to sign up to The Epilepsy Foundation's Walk for Epilepsy at Princes Park on October 21.

The walk is the foundation's inaugural outdoor fundraising event and hopes to raise money and awareness for the 60,000 Victorians living with epilepsy and the 60 sufferers who die each year as a result of their condition.

You can donate money towards Ms Warmington and Ms Bullock's Walk for Epilepsy campaign at [walkforepilepsy-2018.everydayhero.com/au/team-bullock](http://walkforepilepsy-2018.everydayhero.com/au/team-bullock)

## History

# From corporate office to high-end living

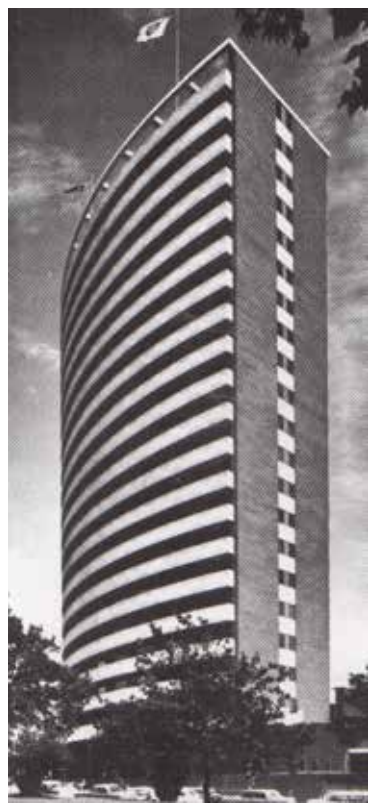
At the southern end of Southbank is the block of apartments called The Domain.

It represents patterns of changes to land-use in the area, where existing housing was replaced by corporate headquarters, which were later converted to apartments.

The high-pressure building boom of the late 1950s saw corporations seeking to construct new buildings facing difficulties in finding large plots of land in the city. Many began to look south across the river where the value of land was significantly cheaper.

South Melbourne had long been a mishmash of factories, workshops, car dealers and small businesses, much of it on Crown land leased from the Commonwealth.

But it was well-served by two tram lines, land was plentiful and cheap and there were fewer impediments to construction than in the city. Demolition of large buildings to enable the new was not necessary and the council, ever keen to attract development, was offering attractive deals on property



The BP building.

rates – about 10 per cent of those payable in the city.

The major southern boulevard of St Kilda Rd had been cited for office development following a change to zoning in 1956. At the intersection with Albert Road, the oil company British Petroleum (BP) constructed its new headquarters in 1964.

It replaced Princes Terrace, a long, 19th century group of about 10 two-storey houses in Albert Rd, that would today be highly-prized for their uniformity of design and features, but had become run-down and were unceremoniously knocked over.

The 19-storey design (by the firm of R.S. Demaine, Russell, Trundle, Armstrong and Orton) swept around the gently-curving corner. Decidedly horizontal, the simple facade of the state-of-the-art building utilised precast concrete panels, adorned with an understated surface pattern comprising a linear motif, and represented a shift away from the glass curtain-walled towers erected in post-war Melbourne.

Like a number of other 1960s towers, additional visual interest was provided by a relief mural in fibreglass electroplated with copper and a 1964 abstract sculpture in the

theatrette foyer by the Melbourne sculptress Norma Redpath.

The building became indelibly ingrained into the memory of many Melburnians when BP adorned it with a huge illuminated star each Christmas and Easter.

BP relocated in 1993 and the building was purchased and converted into over 100 apartments (one of the first such conversions in Melbourne) and modified externally with the addition of balcony terraces for the new occupants (some capable of holding 200 guests).

On completion in 1995 it was re-named as The Domain and became one of the prestige high-rise apartment towers in Melbourne, a status it still enjoys.



Robin Grow

President - Australian Art Deco and Modernism Society  
[robingrow@ozemail.com.au](mailto:robingrow@ozemail.com.au)



# Sustainability talks and Boyd Park

September and October (so far) have been great educational months for the Southbank Sustainability Group, while we are waiting for the new Boyd park community garden and orchard.

In September we ran a talk on how to reduce our environmental impact through “zero waste” living. I conducted this talk with the assistance of a long-term “zero waster.”

Then on October’s first Saturday, we ran our second talk on “Conscious Consumerism and Fast Fashion”, focusing on the harmful environmental and human effects of fast fashion and some great solutions. The talk was conducted by Madeline Clarke, founder of Green Spectrum. We are very grateful!

In early October we met the City of Melbourne’s team in charge of the long-awaited Boyd Park, and community garden.

## With some of the park’s roll-out phases delayed, here is the latest on the community garden:

- First half of October: Old school building demolished and north lawn fence removed;
- December-January: North lawn



completely cleared and built to adhere to new park design (current location of community garden’s in-ground plants);

- January-February 2019: Orchard trees established in back right-hand side corner of new Boyd Park. New tap and hose line added for watering. Permanent toolbox to store gardening tools added; and
- April-May 2019: Front of Boyd permanent vegetable and herb garden planter boxes established (near current playground area).

We already moved the passion fruit plants, climbing on the north lawn fence, to the concrete planters at the back of the area. This

is why you might have seen the dried passion fruit branches, instead the usual lively, green fence growth.

Over the next few months’ meet-ups, there will be opportunities to move more north-lawn plants and also for residents to take some of the plants to transplant at home.

You will slowly see the current community garden area move to the concrete planters in the back with the addition of new trees.

We meet every fortnight on Saturdays at 10am (on the first and third Saturdays of the month) at Boyd to talk sustainability issues and projects, garden needs and then we go out and tend to the garden for the second

half of the meet-up.

The next meet-up is on Saturday, October 20.

For more details or to get involved with the group or the garden, contact us at: [facebook.com/SouthbankSustainabilityGroup](https://www.facebook.com/SouthbankSustainabilityGroup) or [southbanksustainability@gmail.com](mailto:southbanksustainability@gmail.com)



**Artemis Pattichi**

Southbank Sustainability Group  
[southbanksustainability@gmail.com](mailto:southbanksustainability@gmail.com)

## Health & Wellbeing

# Positive psychology for increased wellbeing

Traditionally, psychologists have been focused on alleviating human suffering by supporting individuals to relieve the negative symptoms they experience.

This is not the same as supporting people to flourish and thrive in their life in a proactive way before they begin to experience these negative symptoms.

The science of positive psychology is focused on supporting all people, even those that are travelling well, to thrive in life, and not just help those that are struggling.

## PERMA model of wellbeing

The area of positive psychology is the scientific study of the factors that enable individuals and communities to flourish. So what is human flourishing and what enables us to do so?

The PERMA model for wellbeing states that there are five building blocks that enable flourishing – positive emotion, engagement, relationships, meaning and accomplishment and there are techniques to increase each.

Take a look at each of the below: how many of these elements do you have in your daily life?

## Positive emotion- feeling good

Being able to focus on positive emotions

is the ability to be optimistic and view the past, present, and future from a positive perspective. We can increase positive emotions through cultivating gratitude and forgiveness, savouring physical pleasures and mindfulness and building hope and optimism. Positive emotion is partly heritable however and our emotions tend to fluctuate within a range, so do not be alarmed if you don’t experience positive emotions regularly and strongly, this is not the only way towards wellbeing.

## Engagement – being completely absorbed in activities

Engagement is the experience of becoming fully absorbed in the activity that you are doing because it fully deploys your skills and strengths and is just challenging enough to keep you on task. According to scientists, this experience is called “flow”. Choose tasks that create this feeling for you: an interesting work project, playing a musical instrument, reading a book, writing, building furniture, fixing a bike, gardening, sports training or performance etc.

## Relationships – being authentically connected to others

Our relationships often amplify our wellbeing by providing us with some of our basic human needs: interaction and connection with other humans and allow us to experience emotions which improve mood and overall wellbeing such as: joy, meaning, laughter, a feeling of belonging and pride. From an evolutionary perspective, connection also serves us because the drive to connect with and support others promotes our survival.

## Meaning – having a purposeful existence

Meaning is the sense that you belong to and are serving something bigger than yourself and is in stark contrast to the way many of us live our lives – in the pursuit of pleasure and material wealth. Studies continuously conclude that meaning (as opposed to the ownership of material possessions) leads to a greater sense of purpose, belonging and connectedness, thus

enhancing wellbeing and providing a barrier against mental illnesses such as depression and anxiety.

## Achievement – a sense of accomplishment and success

Having (and achieving) explicit goals and ambition in life can give us a sense of accomplishment and improve our self-esteem and self-worth. Make your goals achievable and timely so that you feel a sense of achievement as often as possible. When you achieve a goal, make sure you savour your accomplishment.

Do you have questions for Rajna or a topic you would like her to cover?

Email [bogdanovicrajna@gmail.com](mailto:bogdanovicrajna@gmail.com)



**Rajna Bogdanovic**

Clinical psychologist  
[bogdanovicrajna@gmail.com](mailto:bogdanovicrajna@gmail.com)



Holmesglen

# Student-led underground runway

Fashion design students from Southbank's Holmesglen City Campus will showcase their edgy work that channels the grunge scene at an underground carpark turned runway this month.

Bachelor of Fashion Design students have produced *Underground Runway* as part of Holmesglen's October Student Showcase. Professional models will wear their avant-garde pieces in a Chadstone campus car park.

Some of the talented third-year students have already shown their work at Melbourne Fashion Week's (MFW) Town Hall student event this year, working to the theme "communicate".

Among them is 32-year-old Mauritian-born Joan Rose. Joan's subtle minimalist designs were featured at MFW. Her grey and navy outfits, including a coat and slip dress, blouse and pants and a dress, used bold stitching and markings to reflect the beginning of the tailoring/manufacturing



Ella Strong and Jacque Sale.

process.

"I wanted to show people the initial

process of garment making," Joan said. "This is how you put a garment together. That's

the most important part of constructing a garment. My cuts are really basic because I think the garment does not have to be trendy, but it has to stand the test of time."

Holmesglen fashion program course leader Julie Wright said the "super talented" students designed their outfits using modern equipment and computer-aided design (CAD). She said *Underground Runway's* brief was to challenge or provoke, which the event would do in its gritty real-world setting.

"They are daring and imaginative," Ms Wright said of the designs. "There needs to be an element of beauty too. People need to be able to say 'wow' but also 'look at that craftsmanship and beauty'. One of the hallmarks of our program is innovative technical design."

*Underground Runway* is part of Holmesglen's 2018 Student Showcase, which runs from October 15 to 28 and will highlight the best of trade, hospitality, education, IT and environment courses.

Showcase will have displays, demonstrations and activities across Holmesglen's entire program, highlighting how much more a TAFE education can offer.

*Underground Runway* will take place at 6.30pm, October 18 at Holmesglen's Chadstone Campus. [Holmesglen.edu.au](http://Holmesglen.edu.au)

## Letters to the Editor

### The cost of cladding

RE: OCs will be forced to fix dodgy cladding. Surely this is tripe? What is the point in having standards and building regulations in place where architects, builders, councils, developers, etc are required to ensure these regulations are met? Being part of an OC group, I believe that it's time to take on this one-sided decision and join in a class action against it. We pay enough in rates and taxes now with little protection provided by the state government and councils without having to fork out more to cover their lack of enforcing regulations.

Brian Kelly

Montague Towers

### Keep Miles St clean

My name is Boris. My wife Zina and I live on Miles St in Southbank. We have a serious problem with garbage in our area. Across the road there is a low-rise building at 175 Sturt St. There are a number of businesses there. They generate a lot of rubbish, which they put into big industrial bins. More often than not these bins are not closed properly so all sorts of rubbish flies all over the place and a lot of it ends up in our front garden and on our driveway.

Those bins are left sitting outside 175 Sturt St for days on end. Lately we had a number of windy days so Miles St was covered in an extra layer of rubbish. On one occasion a bin drifted across Miles St and ended up in our driveway. My wife could not get in. In a few days there was another incident - in the evening the wind pushed a bin across Miles St and it hit our car, which was parked outside. Zina and I approached some people working at 175 Sturt St to find out who is in charge of rubbish removal. They sent us to their landlord - Wood Property Partners. We spoke to them and emailed them trying

to understand what is going on and who is responsible for the damage to our car. They replied that there were strong winds and they recommended me to talk to our OC management. They also replied that they are not going to be responsible for damage to our car and recommended me to approach our insurance company. What sort of response is that? There is still a lot of rubbish everywhere. Recently Melbourne Art Fair was only a stone's throw away from Miles St. I saw a number of people going along pointing to piles of rubbish and taking photos. It is a shame for Southbank and Melbourne. I also lodged a complaint with City of Melbourne. However, so far, I have not noticed any improvements. Please find attached a number of photos I took recently including a big bin sitting in our driveway and damage to our car. My wife and I are no longer spring chickens and it is difficult for us to clean someone else's garbage. Our neighbour is in the same boat regarding garbage coming from across the road.

Boris Berezin

### An alternative view

As a member of an ALP faction - the Kim Beazley Snr faction or "The cream of the working class faction" - I just love watching a good old factional fight between other ALP factions, even more so if it's an internal factional fight where the waste matter really flies, and the stakes are high - a seat in parliament.

Nowadays, there is no discernible difference between the ALP factions. They exist only as grubby job-creation schemes for those within the factions who would, metaphorically speaking, kill their own mother to become an MP and from there a millionaire, then later, if you are smart, a multi-millionaire and, if even smarter, a

multi-millionaire plus working for the top end of town.

As sure as night follows day Comrade Michael Danby, the Member for Israel obliged and organised just such a bun fight when he organised a Labor Unity (LU) faction meeting at the Caulfield RSL on July 19 to select his replacement as the Member for Melbourne Ports / Macnamara, now that he was forced to retire at the next election by Labor heavies.

One source claims it was the Vic ALP Administrative Committee. Michael, I understand, wanted to continue to boost his super pay-out.

Danby's intention was to anoint Nick Dyrenfurth, a fellow Mt Scopus student, as the next MP for Macnamara and to make it extremely hard for a female candidate, in this case, Ms Delahunty, a popular former local mayor.

Danby sent the invitations on his parliamentary letterhead to 138 LU faction (80 per cent male) members out of the 530 ALP (real members plus LU stacks) members in Melbourne Ports / Macnamara.

The other male candidate was Josh Burns, a former Danby staffer, who now works for the Socialist Left-beholden Premier, "Dan the Man" Andrews.

Lo and behold, to Danby's horror, enter Nicollo de Machiavelli. A text message was sent out to non-LU faction members requesting that they come to the preselection meeting mentioned above and that the event would be hosted by M. Danby. No one seems to know who sent the text but clearly an ALP member who has access to the local ALP membership list.

At the start of the meeting there were about 35 LU faction members in the meeting room with 45 non-faction members being physically barred from trying to get in. We all called out "shame" when the door opened to

let someone in or out.

After that we mostly went down stairs to have a "cleansing ale" or three with all the candidates - but not Michael, coming down later to talk to non-LU faction members.

The first vote was, I'm told, Josh 55, Nick 37, Mary 16. The meeting ended at 8.30, to Michael's horror, with Josh Burns eventually winning 61 - 49 on Ms Delahunty's preferences.

The number of attendees increasing during the night after frantic phone calls to LU members to "turn up" and vote. Ms Delahunty has accused Danby of trying to misrepresent the electorate with a "vote" of what a select group (male dominated Labor Unity) thought. She has not been permitted to see the voting list even though she is a LU faction member, such is the distrust between the hard-right LU supporters and general LU faction members.

Supporters of Ms Delahunty have raised concerns that Mr Burns's preselection would represent a serious blow to the party's (and Shorten's) affirmative action policies or initiatives.

Less than a week later Josh received the nod from the ALP National Executive which meant that 53 LU members in Macnamara have won over nearly 500 other ALP members (real members plus stacks) in Macnamara, who once again, have no say in proceedings.

From memory, Labor had problems in staffing the polling booths at the last federal election in 2013, which is surprising given the claimed ALP membership.

Marcus "The Comrade" L'Estrange



Send your letters to [news@southbanklocalnews.com.au](mailto:news@southbanklocalnews.com.au)



# WHAT'S ON COMMUNITY CALENDAR

JAN | FEB | MAR | APR | MAY | JUN | JUL | AUG | SEP | **OCT** | NOV | DEC |



**INNER MELBOURNE LIFE ACTIVITIES CLUB**  
Meeting on selected dates and various locations, IMLAC takes in the city's parks, its culture, fabulous eating options as well as festivals, galleries and concerts.  
**www.life.org.au/implac or call Dianne 0425 140 981**



**TUESDAYS @ BOYD - \$5 DONATION**  
**BOLLYWOOD WORKOUT**  
Inspired by the high energy music from Indian/Bollywood films these workout sessions are focused on building and developing your dance technique and most importantly, having tonnes of fun!

**TUESDAYS - THURSDAYS & SATURDAYS**  
**CHUNKY MOVE DANCE CLASS**  
Mondays to Thursdays and Saturdays at 111 Sturt St. Chunky Move dance classes are the perfect way to unwind, get fit and improve flexibility and strength.  
**www.chunkymove.com**



**TUESDAYS**  
**LAUGHTER YOGA @ BOYD**  
Laughter Yoga is a unique concept that allows you to laugh even when you least feel like it and is ideal for all ages. Sessions are at Boyd Community Hub, Assembly Hall each Tuesday at 6pm.



**YOGA: SATURDAYS @ BOYD**  
Suitable for all levels of experience and includes an appropriate amount of challenges and relaxation which will help you achieve a balance between strength and flexibility. **Register: facebook.com/events/625656444477843/**



**TUESDAY, OCTOBER 30 @ BOYD**  
**MEET THE CANDIDATES**  
With the November 24 State Election looming this is your chance to hear from your local candidates for the seat of Albert Park before you cast your vote. Register: **sra-mtc-vic2018.eventbrite.com**



**FRIDAYS 7.45AM - 9AM @ BOYD**  
**COMMUNITY TAI CHI**  
WULONG TAI CHI offers you the opportunity to enhance your strength, balance, flexibility and well-being in a friendly, supportive environment. All welcome. **lily@wulongtaichi.com.au**



**SUNDAYS**  
**ARTS CENTRE MARKET**  
Meet over 80 of Victoria's finest artisans first hand. Discover how these unique artworks are made, chat directly about the products, inspirations and techniques.  
**www.artscentremelbourne.com.au.**

**WEDNESDAYS @ BOYD**  
**FREE WALKING GROUP**  
Join local fitness experts JustInTime as they lead a 'not just walking group' for Boyd walkers. The program runs on Wednesdays from 9.30am to 10.30am.



**77 - 83 CITY ROAD, SOUTHBANK**  
**ONE ROOF**  
A community, a home and an entire ecosystem providing everything a female entrepreneur needs to thrive under one roof. Find out what's on: **melbourne.oneroofwomen.com/new-events**



**FIRST AND THIRD SATURDAY EACH MONTH**  
**SUSTAINABILITY GROUP**  
A growing group of green and sustainability enthusiasts who live in Southbank looking to bring positive change. More info: **facebook.com/SouthbankSustainabilityGroup**

**TUESDAYS**  
**SOUTHBANK ROTARY**  
Rotary Club of Southbank meets weekly for dinner on most Tuesday evenings throughout the year at Federation Square. Visitors are always welcome.  
**www.southbank.org.au**

**MONDAYS @ BOYD**  
**JUSTICE OF THE PEACE**  
Local Southbank JP Atilla Akguner offers two hour sessions every Monday morning from 11am until 1pm at the Principal's Office at Boyd. To book in a time contact: **atillaakguner@gmail.com**

**FIRST THURSDAY OF EACH MONTH**  
**SUNRISE PROBUS CLUB**  
Over 50, living in Southbank and want to join our vibrant club for activities, events and friendship? Meet at Library at the Dock at 10am. Contact Verna on 0407 065 910. **MSPC.docklands@gmail.com**



# BUSINESS DIRECTORY

## ATTRACTIONS

Open Daily from 10am  
[eurekaskydeck.com.au](http://eurekaskydeck.com.au)



## BROTHEL

**Studio 466**  
 美女如雲  
 466 City Road  
 South Melbourne  
 03 9696 4666  
 OPEN 7 DAYS



## CHURCH

**St Johns Southgate**

20 City Road Southbank  
 Telephone 9682 4995  
[www.stjohnssouthgate.com.au](http://www.stjohnssouthgate.com.au)

## EDUCATION

**holmesglen**

To find out more,  
 call 03 9564 2716 or  
 visit [holmesglen.edu.au](http://holmesglen.edu.au)

CRICOS Provider Code: 000126, T.OID: 0416, B2261016 LMDM

## ESCORTS

[www.paramour.com.au](http://www.paramour.com.au)

**(03)9654 6011**

Melbourne's Finest Escorts  
 can be at your door in 5min  
 as we're located in the CBD

## FUNCTIONS

**EUREKA 89**

Level 89,  
 Eureka Tower,  
 7 Riverside Quay,  
 Southbank  
 (03) 9693 8889  
[eureka89.com.au](http://eureka89.com.au)

**St Johns Southgate**

Facilities hire Beautiful venue for  
 weddings and memorial services  
 Concert venue with excellent acoustic  
 and comfortable seating Spacious  
 function room Meeting rooms Kitchen

20 City Road Southbank  
 Telephone 9682 4995  
[www.stjohnssouthgate.com.au](http://www.stjohnssouthgate.com.au)

## FURNITURE

**GORSIA DESIGN**

SHOWROOM NOW OPEN  
 18 FANNING STREET, SOUTHBANK 3006  
[www.gorsiadesign.com.au](http://www.gorsiadesign.com.au) | PH: 9681 4061

## GYM

**JUSTINTIME PERSONAL TRAINING**

University degree qualified trainers  
 that come to your apartment gym!

Justin Moran [justintimept.com](http://justintimept.com)  
 0411 798 934

## HAIR & BEAUTY

**RoopRani**  
 herbal beauty salon  
 HAIR & BEAUTY SPECIALISTS

P5 SOUTHGATE COMPLEX - PH 9686 6504  
[WWW.ROOPRANI.COM.AU](http://WWW.ROOPRANI.COM.AU)

## HOMEWARE

**DFO South Wharf Homemaker**  
 Level 1 Shop 111 opposite JB HI-FI

**ByRoyale**

[www.byroyal.com.au](http://www.byroyal.com.au)

## MARKET

**SOUTH MELBOURNE MARKET**

Explore the Market

SOUTH MELBOURNE MARKET  
 Corner of Coventry & Cecil Streets, South Melbourne

## ORGANIC GROCER

**Broad Bean**  
 ORGANIC GROCER

EAT. DRINK. SHOP. ORGANIC

26 Fanning Street, SOUTHBANK

## PHOTOGRAPHY

photography studies college

[psc.edu.au/courses](http://psc.edu.au/courses)  
 9682 3191  
 Australia's No 1 Photography College

\*Winner National Photography Industry #1 Award for Excellence in Photography Education 2014, 2013, 2012, 2011

## REAL ESTATE

**CityResidential**  
 REAL ESTATE PTY LTD

T: 03 9001 1333  
 818 Bourke Street,  
 Docklands  
 VIC 3008

SALES Glenn Donnelly m: 0419 998 235  
 LEASING Lina D'Ambrosio m: 0430 959 851

[www.cityresidentialbourkestreet.com.au](http://www.cityresidentialbourkestreet.com.au)

SELLING | LEASING | PROPERTY MANAGEMENT

**FIFTEEN85**  
 SOUTH MELBOURNE

[www.fifteen85.com.au](http://www.fifteen85.com.au)

**LUCAS**

WE KNOW VERTICAL LIVING  
 BETTER THAN ANYONE.  
 THAT'S YOUR ADVANTAGE.

9091 1400 | [lucasre.com.au](http://lucasre.com.au)

**MELBOURNE SQUARE**

THE LARGEST TERRACES  
 IN MELBOURNE

TO BOOK AN APPOINTMENT CALL 1300 888 770 OR  
 DISCOVER A TERRACE STORY AT [MELBSQUARE.COM.AU](http://MELBSQUARE.COM.AU)

**RayWhite**

Ray White Southbank  
 111 Clarendon Street, Southbank 3006  
 P: (03) 8102 0200 F: (03) 8080 3284  
[www.raywhitesouthbank.com.au](http://www.raywhitesouthbank.com.au)

## RESTAURANT

**DOWNSTAIRS**  
 BISTRO & LOUNGE

215-217 Sturt Street Southbank Victoria

9686 5015  
[WWW.DOWNSTAIRS.NET.AU](http://WWW.DOWNSTAIRS.NET.AU)

## SCHOOLS

[www.haileybury.vic.edu.au](http://www.haileybury.vic.edu.au)

**HAILEYBURY**  
EDUCATION

## SERVICES

**Stop Noise**  
 ADD ON DOUBLE GLAZING

NOISE REDUCTION SPECIALISTS

1800 880 844  
[INFO@STOPNOISE.COM.AU](mailto:INFO@STOPNOISE.COM.AU)  
[WWW.STOPNOISE.COM.AU](http://WWW.STOPNOISE.COM.AU)

## SPA & MASSAGE

**Tang Spa**

Body massage,  
 scrub and  
**\$29 mini-facial**

Try our free, five minute neck and shoulder oil  
 massage (book via SMS). Health rebate.

Find us on the ground floor retail at the  
 rear of the building, facing the river.

88A/889 Collins St, Docklands  
[tangspabeautymassage.com](http://tangspabeautymassage.com)  
 0403280886 / 0447463635

## SPORT MEDICINE

World Class Sports Medicine  
 Care for Everyone

SERVICES

- Nutrition / Dietetics
- Psychology
- Remedial Massage
- Myotherapy
- Exercise Physiology
- Clinical Pilates
- Orthopaedic Surgery
- Sports Cardiology
- Women's Health
- Hand Therapy

FOR ALL APPOINTMENTS:  
 1300 859 887

**OLYMPIC PARK SPORTS MEDICINE CENTRE**  
OLYMPIC PARK • GEELONG  
[www.opsmc.com.au](http://www.opsmc.com.au) | CONNECT WITH US







RayWhite

21/106 Southbank Boulevard, **Southbank**

2 1 1

- Large Terrace on Title 23 sqm (approx.)
- Enormous Open Living/Dining Area
- Renovated Kitchen and Bathroom
- Car Park on Title
- Boutique Low-Rise Complex

Auction  
28th Oct 2018

**Michael Pastrikos**  
0404 282 864

[raywhitesouthbank.com.au](http://raywhitesouthbank.com.au)



RayWhite



129/22 Kavanagh Street, **Southbank**

1 1 1

- Large open plan living and dining
- Natural light throughout
- Spacious kitchen with plenty of storage
- Split system heating and cooling
- Car park on title

Contact Agent

**Michael Pastrikos**  
0404 282 864

[raywhitesouthbank.com.au](http://raywhitesouthbank.com.au)



RayWhite

2/28 Wells Street, **Southbank**

2 1 1

- Boutique Low-rise Complex
- Convenient Ground Level Location
- Spacious Terrace on Title
- Natural Light Throughout

Auction

**Michael Pastrikos**  
0404 282 864

[raywhitesouthbank.com.au](http://raywhitesouthbank.com.au)



RayWhite

304/221 Sturt Street, **Southbank**

3 2 1

- Spacious Open Plan Living and Dining
- Lots of Natural Light Throughout
- Main Bedroom with Walk-in Robe and Ensuite
- Over 120m<sup>2</sup> approximately

Auction

**Michael Pastrikos**  
0404 282 864

[raywhitesouthbank.com.au](http://raywhitesouthbank.com.au)

## 3 Months Free Management!

RayWhite

We are so confident in our abilities to manage your property that we are offering all new landlords a 3 month free management period. If you're not happy with our service it doesn't cost you a thing.

Enquire today for more information on this exclusive offer.



Lilian Kwan 关丽莲  
0401 207 208



Persa Kapsali  
03 8102 0200

[raywhitesouthbank.com.au](http://raywhitesouthbank.com.au)  
[southbank.vic@raywhite.com](mailto:southbank.vic@raywhite.com)  
03 8102 0200