

The voice of Southbank, South Wharf & Montague

# SOUTHBANK Local NEWS

■ Proxy farming tackled

Page 3

■ Candidates talk Macnamara

Page 7



■ Asbestos concerns

Page 10

■ Cat survives 18-storey fall

Page 11



## Vault marks a million!

Art Centre Melbourne's Australian Music Vault has celebrated one million visitors entering the space since opening its doors to the public just over a year ago.

To commemorate the special occasion, Arts Centre Melbourne CEO Claire Spencer joined beloved Australian band Human Nature in cutting a cake on May 1. The group helped celebrate further with a few vocal performances on the day inside what has become a much loved part of our Arts Precinct.

Continued on page 12.



Claire Spencer (centre) with members from Human Nature (L-R) Michael Tierney, Phil Burton, Andrew Tierney and Toby Allen celebrate.

Photo: Mark Gambino.

# Southbank pushes council on waste

By Sean Car

Our local community, led by the Southbank Residents' Association (SRA) and Southbank Sustainability Group (SSG), has played an integral role in reshaping the City of Melbourne's 2030 waste and resource recovery strategy.

In what will prove to be a critical and defining document in our city's short-term effort to reduce its impact on climate change, the strategy was put before councillors at the Future Melbourne Committee (FMC) meeting on April 16.

With reference to Victoria's current recycling crisis, the strategy outlines the opportunity to accelerate a move towards a circular economy on a reuse, recycling and recovery system with a vision to transition toward zero waste to landfill.

Key priorities include options to separate organic waste, create a new recovery hub network for businesses, establish a new expert advisory service to support an improved waste system, create a waste minimisation and innovation fund and provide e-waste recycling options for residents.

It also proposed a number of governance improvements and pledged to advocate for greater investment in new resource recovery infrastructure, an incentive program

to improve collection systems and the introduction of a container deposit scheme (CDS).

As part of the strategy, council is also set to pilot a food waste collection trial in Kensington, with 700 residents to receive a third kerbside bin for food scraps to test how a domestic food waste collection service could work in the municipality.

However, councillors would ultimately include a long list of changes and inclusions

to the original strategy devised by council management, thanks to the efforts of 12 submitters, eight of whom were Southbankers.

SRA treasurer and SSG member Artemis Pattichi delivered a verbal submission on the night in which she warned councillors of the risks of not adopting more ambitious targets in the face of rising climate change.

Continued on page 4.

ACT OF WINE

Honest wine, craft beer, artisan spirits  
 22 Fanning Street SOUTHBANK  
 Open 7 Days  
[www.actofwine.com.au](http://www.actofwine.com.au)

NEW  
STORE  
NOW  
OPEN

# Boulevard project delayed

*The completion of stage one of the transformation of Southbank Boulevard has been delayed until December 2019.*

A spokesperson for the City of Melbourne told *Southbank Local News* that the original program of works had been revised because of delays caused by "site conditions".

"The transformation of Southbank Boulevard will add 2.5 ha of public space to Melbourne's most densely populated suburb," the spokesperson said.

"Transforming Southbank Boulevard is a complex project that involves the delivery of a series of major infrastructure upgrades and a high level of co-ordination between numerous contractors and project partners."

*Southbank Local News* understands that the delays are largely the result of poor co-ordination between a number of state government agencies, including VicRoads. The City of Melbourne's former principal project manager Steve Perumal, who has led the project for many years, has also recently left council for a new role with the City of Port Phillip.

Road access from St Kilda Rd to Sturt St, which was scheduled to have been reopened by May, remains closed.

It is understood that the delays are also causing minor disruptions to the state government's progress on the new National Gallery of Victoria Contemporary (NGVC)



*The new look tram tracks on Southbank Boulevard complete with new greenery, which was planted last month.*

at the site currently occupied by the CUB Building.

A team was appointed in February to design the public space component of the project and this work is well underway, with timing for the existing building's demolition to be determined once the planning and design phase is complete.

The Minister for Creative Industries and local member for Albert Park, Martin Foley, said while the delays were a hassle, they were far from fatal.

"This redevelopment will transform the Melbourne Arts Precinct, linking up our much loved cultural institutions and delivering new public space for the people of Southbank to enjoy," he said.

## HYPERLOCAL NEWS

Suite 108, 198 Harbour Esplanade  
PO Box 23008 Docklands 8012  
Tel: 8689 7980 Fax: 9602 2929  
www.southbanklocalnews.com.au

Editor: Sean Car

Publisher: Hyperlocal News Pty Ltd  
ABN: 57623558725

Tel: 8689 7980 Fax: 9602 2929  
advertising@southbanklocalnews.com.au

Reader contributions are welcome.  
Please send articles and images to  
news@southbanklocalnews.com.au

Deadline for edition 86 is May 30.

## CONNECT

Keep up to date with local news & events.



Follow us on Twitter  
@SOUTHBANK\_News



Like us on Facebook  
Southbank Local News



Like us on Instagram  
SouthbankLocalNews

# DOWNSTAIRS

— BISTRO & LOUNGE —

P: 9686 5015 | 215-217 Sturt Street Southbank Victoria



## NEW MENU

Brunch All Day  
Dinner: Thurs/Fri/Sat

## NEW OPENING HOURS

Monday: 7am-4pm  
Tuesday: 7am-4pm  
Wednesday: 7am-4pm  
Thursday: 7am-Late  
Friday: 7am-Late  
Saturday: 8am-Late  
Sunday: 8am-4pm



## FREE HAPPY HOUR DRINK

To be redeemed during May 2019

# Proxy farming tackled in new Bill

*The state government has moved to close loopholes which render owners' corporations (OCs) vulnerable to takeover by limiting "proxy farming".*

Currently, there is no limit to the number of proxy votes that can be "farmed" and, as reported in our March edition, unscrupulous short-stay operators are currently poised to take over OCs in investor-majority towers.

But an "exposure draft" of a proposed *Owners Corporations and Other Acts Amendment Bill* tackles the issue and, if made law, would bring Victoria legislation into line with other states.

The government is seeking feedback on the Bill by May 10 and intends to introduce the new legislation later this year.

The new Bill is unlikely to be enacted early enough to stop "takeovers" during this year's annual general meeting (AGM) season. But once it does become law, proxies will lapse after 12 months.

And, tellingly, proxies farmed by non-lot owners won't be able to be used to vote out strata managers.

Under the proposed Bill: A person who is not a lot owner but who is the proxy of a lot owner may not vote on any matter that affects that person relating to —

- (a) the delegation of powers and functions of an owners' corporation under section 11; or
- (b) the appointment, payment or removal of the manager of an owners' corporation under Part 6.

And, in the future, it is unlikely that proxy holders will be able to command a majority of voting power because the government proposes to limit the number of proxies held by individuals.

The Bill proposes: A person must not vote as a proxy on a resolution at a meeting of the

owners corporation —

- (a) on behalf of more than one lot owner — if there are 20 or less occupiable lots on the plan of subdivision; or
- (b) on behalf of more than 5 per cent of the lot owners — if there are more than 20 occupiable lots on the plan of subdivision.

The Bill also tackles threatening behaviour being used by unscrupulous individuals to "farm" proxy votes. It introduces a 60-penalty-unit offence for "requiring or demanding" proxy votes from lot owners.

The Bill has been cautiously welcomed by the We Live Here movement, which represents OC committees.

In its column on page 24 of this edition, We Live Here says: "... at first glance the proposed new Bill does seem to give more support for owners' corporations than previously, indicating that our voice is at last being heard."

In the column, the movement highlights aspects of the Bill which recognise that different sized OCs require different treatment.

It also draws attention to moves designed to stop builders and developers from setting up unfair, long-term contracts with related companies when an OC is first formed.

The column says: "We Live Here has previously expressed concern that the government has been consulting in private and only with commercial groups — businesses that make money from buildings that are governed by owners corporations, and not the owners' corporations themselves."

"However, it seems submissions and campaigning by us and others have not been in vain, and we welcome the proposals that are aimed at creating a clear distinction between the role of owners' corporations and the role of owners' corporation managers in buildings that are governed by owners' corporations."

But not everyone is happy with the Bill.

In his Owners' Corporation Law column in this edition (see page 25), strata lawyer Tom Bacon says the government has failed to give OCs real power to seek legal remedy for the things that really matter — such as building defects like non-compliant cladding.

Mr Bacon writes: "... when you dig a little deeper into the detail, the truth of the matter is exposed. In fact, the reform to lower the barrier from a special resolution to an ordinary resolution is only activated if the subject matter in dispute is 'within the civil jurisdictional limit of the Magistrates Court'. This limit is currently described as any matter worth less than the sum of \$100,000."

"So, if an OC sought to terminate an OC manager's contract, or a caretaker's contract, and if those agreements had remaining value (including insurance commissions) in excess of \$100,000, then it is back to square one of requiring a special resolution."

"Indeed, if an OC had a report detailing building defect issues on the common property, then most likely a special resolution is still required."

"This keeping of the status quo only suits the tier one developers and builders, and the strata management and facilities management sectors."



## New hotel

*Hotel operator Accor has opened the doors of its new hotel within the 55-storey Shadow Play tower at 105 Clarendon St, Southbank.*

Shadow Play by Peppers continues Clarendon St's trend as a future accommodation hub in Southbank, located within walking distance to local tourist attractions, Crown Casino, the Arts Precinct and the Melbourne Convention and Exhibition Centre (MCEC).

Developed by BPM, the 46-storey hotel features a range of spacious one- and two-bedroom apartments with full kitchen and laundry facilities, as well as floor-to-ceiling windows providing plenty of natural light.

It also includes an array of unique guest spaces and amenities, including an enclosed garden space on the 46<sup>th</sup> floor, complete with a freestanding fireplace, guest lounge and library with an adjoining patio with bayside views.

"We're excited visitors to Southbank can now experience Peppers' unique style and acclaimed hospitality," Accor chief operating officer Pacific Simon McGrath said. "Shadow Play by Peppers has added a new level of sophistication and luxury to Melbourne's accommodation offering, which caters perfectly to an increasingly selective global market that is looking for quality, location and facilities of a world-class calibre."

## ABOVE & BEYOND

At Lucas, we have one clear objective - to work tirelessly for you. By providing exceptional support every step of the way, we give you peace of mind and ensure that your experience with us is both enjoyable and rewarding.

After all, you're the reason we do what we do.  
And we love what we do.

9091 1400 | lucasre.com.au

# LUCAS



**Agency of the Year**  
Suburb: Docklands VIC



A large plume of oil spills out across the Yarra River surrounding Queens Bridge last month.

# River pollution causes a stink

**Local residents have raised concerns about ongoing pollution of the Yarra River.**

One Freshwater Place resident provided *Southbank Local News* with a series of images taken on April 23, which show severe oil spills spreading out over the water.

The resident, who preferred not to be named, alleged that they regularly witnessed oil spills occurring and has records of previous instances. The resident alleged that the spill was the result of regular bilge pumps from the boating operator at the Banana Alley berth next to Queens Bridge.

Officers from the Environment Protection Authority (EPA) responded to reports but said they were unable to determine the source of the oil sheen, stating that it was likely to have originated from the nearby Elizabeth St main storm water drain which flows into the Yarra River.

While they were unable to confirm this was the case, EPA regional manager for the metropolitan region, Dan Hunt, said residents and businesses had a shared responsibility to maintain our clean and healthy environment.

“Engine oils from vehicle leaks, car washing or deliberate pouring should not be deposited into the storm water drain system. Engine oils are highly toxic to fish and other aquatic life and affect the amenity of our waterways,” he said.

Parks Victoria also told *Southbank Local News* that it has dispatched a vessel to investigate the site but said the oil plume had largely dissipated and spread out due to changing tide and river flow conditions.

“It is not uncommon for rainfall (such as the short burst experienced recently) to effectively flush the storm water drains and the roads and the broader environment that leads into them out into the river – which includes oils and other pollutants.”

“This leads to an increased accumulation of litter and pollutants in the Yarra. Contaminants flushed from Elizabeth St are a potential source, given the drain’s close proximity to the plume.”

Southbank residents can report pollution – and any observed point of origin – via the EPA’s website [Epa.vic.gov.au](http://Epa.vic.gov.au) or by calling **1300 EPA VIC**.

# Southbank pushes council on waste

*Continued from page 1*

“What the plan is greatly lacking and why we’re demanding the committee not endorse the plan in its current form is the implementation plan and how to get there in terms of avoiding reusing and reducing,” she said. “In its current form the implementation plan is basically continuing a lot of the existing actions and it’s not showing the innovation that it’s talking about in the plan.”

“Unfortunately, when you read the actual United Nations reports outlining the state of our environment we do only have the next 11 years to get this right before the tipping point is gone. That’s until 2030. We need to have a lot bigger, large-scale and ambitious actions to make a difference and to mitigate climate change because after that, that’s it.”

“It’s not the time to have a continuation of actions. We need to see bigger actions and a lot more innovation and we need to see the City of Melbourne leading and being the sustainable leader that it has outlined to be in this report.”

Some of the key criticisms of the strategy included low and missing targets for areas such as household (20 per cent by 2030) and industrial waste (75 per cent), methane gas, organic waste diversion from landfill or composting, as well as single-use plastics.

The strategy also floated the possibility of waste to energy schemes, which submitters were particularly critical of, arguing that commoditising waste would only incentivise its economic value. A push for more renewable energy was strongly encouraged.

The SRA and SSG also urged the council to pilot its own CDS, rather than only adopting a position, arguing that the results could potentially encourage the state government to implement a scheme sooner. The groups also argued that evaluation periods should be implemented into the strategy.

Some of the 15 changes and inclusions

placed into the final draft strategy by councillors included:

- Establishment of the setting of targets for 2023 to evaluate results and evolve actions for 2024-2030;
- Incentives for residential, commercial and industrial sectors to reuse;
- Targets for reduction in packaging, single-use plastic bags and plastic in general;
- Setting higher 2030 waste recovery targets for City of Melbourne-sponsored events;
- Exploration of alternatives to plastic for dog waste and disposal systems;
- Only explore waste to energy after the review in 2023;
- Campaigns and advocacy to reduce and repurpose cigarette butt litter; and
- Review local laws to consider harsher fines for littering.

Councillors requested the final strategy and 2019-2020 implementation plan, inclusive of a one-year monitoring and evaluation framework, be reported back to the FMC with more information by July.

“Clearly on the volume of interest on our waste strategy over the last few years and the continued interest in what the City of Melbourne is doing with respect to the current waste crisis, as it’s called, the community quite clearly wants us to show leadership,” council’s chair of environment Cr Cathy Oke said.

“It’s not clear to the community, industry or even ourselves how we’re going to test things and achieve the reductions within the 10 priorities in the plan. We’re asking it to come back in July with a lot more information.”

For more information visit: [participate.melbourne.vic.gov.au/waste-resource-strategy](http://participate.melbourne.vic.gov.au/waste-resource-strategy)

ENA Greek Street Food is part of Melbourne’s thriving dining culture.

Situated on the banks of the Yarra River, ENA is bringing a modern twist to food inspired by the streets of Greece.

Our menu encompasses the finest offerings from the land and sea.

Now also serving pre-theatre menu and lunch specials.

**WE INVITE YOU TO SHARE THE FEASTING WITH FRIENDS AND FAMILY. YIAMAS!**

Shop M4/9 Mid Level Southgate Complex  
28 Southgate Ave, Southbank  
Ph: 9690 6205 Menu: [enagreekstreetfood.com.au](http://enagreekstreetfood.com.au)

**Receive a Free Bottle of wine\***  
on minimum spend of \$120

Bring the voucher to receive the free bottle of wine

# Amendment to Hancock St tower

**Prominent local developer Salvo Property is seeking an amendment to its approved 35-storey residential tower at 35-51 Hancock St, Southbank.**

Issued a planning permit by the Victorian Civil and Administrative Tribunal (VCAT) last year, the developer submitted an amended application to the City of Melbourne in April.

While reducing the number of floors from 35 to 34, the building would maintain its approved overall maximum height. It is also seeking to increase the height of the street-wall and podium to 80 metres at the western end of the building fronting Clarendon St and the first 25 metres of Hancock St.

However, the most significant change is the reduction in residential dwellings from 199 to 175, to make way for the inclusion of more than 2300 sqm of commercial office space across levels one to six.

The developer's inclusion of office space reflects an ongoing trend in inner city development in what is currently a slow apartment market, particularly for high-end luxury apartments. The new application proposes 41 one-bedroom apartments, 133 two-bedroom apartments and one three-bedroom apartment. Squillace Architects

have also introduced additional communal space above the podium at level 27 and on the building's rooftop. The rooftop includes two landscaped terrace areas with communal outdoor dining.

The architects have also revised architectural detailing and materiality throughout various components of the development, including subtle changes to the facade with the introduction of window boxes for visual depth. A new red window at the top corner of the facade has also been introduced.

In its application to the City of Melbourne, an introductory statement from Salvo Property outlined that the proposed alterations further enhanced the building's design and added a sophistication that would help to further strengthen Southbank.

"The changes proposed to this development are targeted to meet the demand of the current and future needs including flexible commercial office space, high quality communal areas and a variety of apartment types," it stated.

"Salvo Property Group remain a driving force of active development in Southbank with large-scale projects both currently under construction and future development forecast well into the future."

Salvo Property's local developments include Platinum and Bella on City Rd. Its latest development Palladium is currently under construction at 251 City Rd.



A render of the amended proposal for 35-51 Hancock St, Southbank.

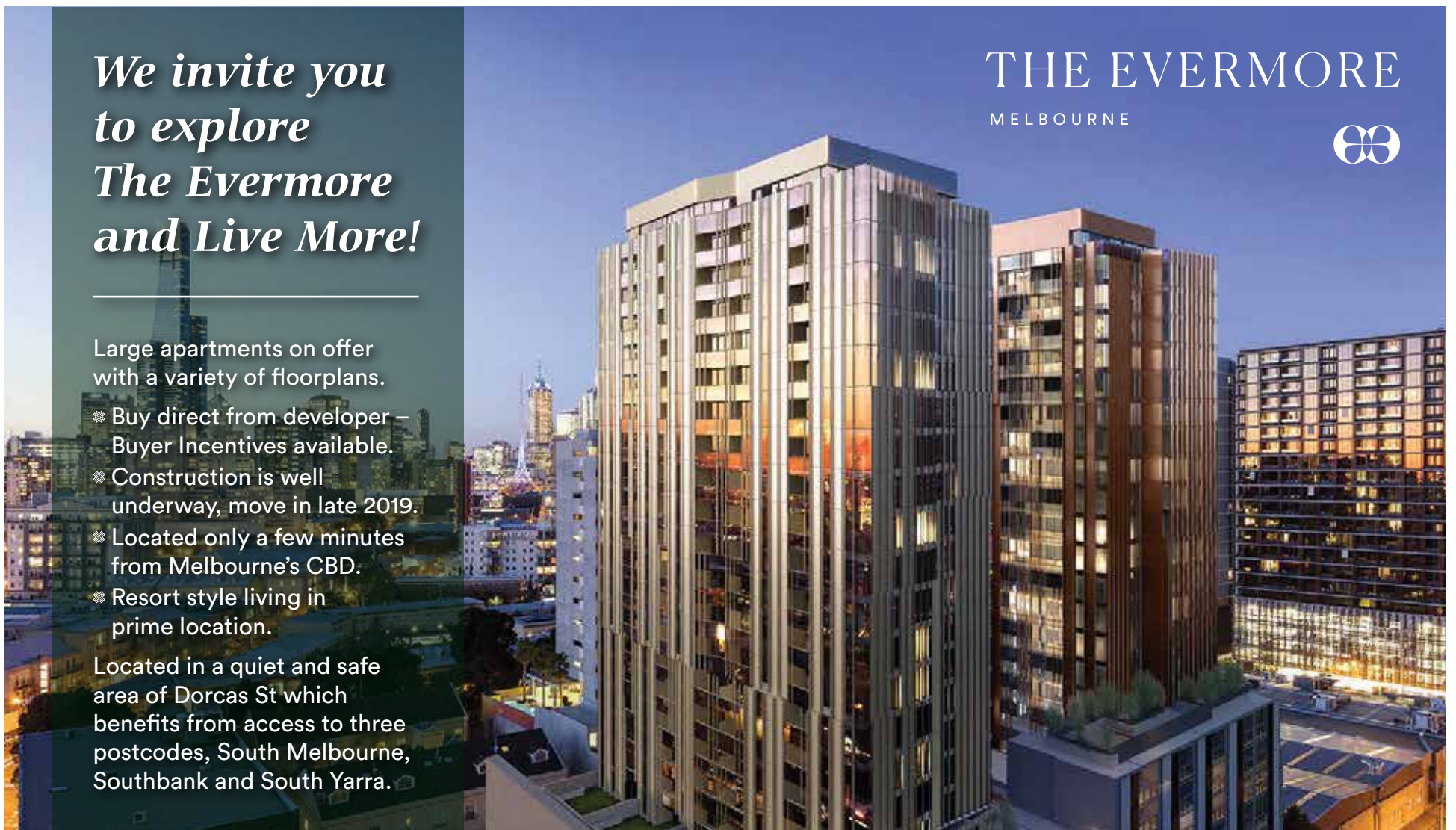
*We invite you to explore The Evermore and Live More!*

Large apartments on offer with a variety of floorplans.

- ✦ Buy direct from developer – Buyer Incentives available.
- ✦ Construction is well underway, move in late 2019.
- ✦ Located only a few minutes from Melbourne's CBD.
- ✦ Resort style living in prime location.

Located in a quiet and safe area of Dorcas St which benefits from access to three postcodes, South Melbourne, Southbank and South Yarra.

THE EVERMORE  
MELBOURNE



Display suite & apartment available to view, contact us for further information  
[www.theevermore.com.au](http://www.theevermore.com.au) or call 1300 383 766

Retreat  
Everyday



Landscape

# No pool in river strategy

*The not-for-profit group Yarra Pools, which is proposing to construct a swimming pool in the turning basin at Northbank, has lamented its exclusion from the City of Melbourne's draft city river strategy.*

The strategy marks the first master plan of its kind for the city section of the Birrarung (Yarra River) and while it is largely ecologically focused, part of its remit seeks to recreationally activate the river's banks.

In addressing the need for the strategy, the document outlines that with rising population comes additional demand on public space, recreation and other uses of the river. "Sustaining and improving people's experience of the Birrarung has never been so important," it states.

In a submission to council's Future Melbourne Committee (FMC), which considered the draft strategy at its April 19 meeting, Yarra Pools co-founder Michael O'Neill expressed his disappointment at being excluded.

Speaking on behalf of Mr O'Neill at the meeting, WOWOWA Architecture director Monique Woodward, whose practice came up with the current design for the initiative, said Yarra Pools had already carried out significant consultation with the community.

"We've read the fabulous draft river strategy and are keen for there to be a greater emphasis for a swimmable river," she said. "Wading gets mentioned, as does floating wetlands, softening the edge of the river, improving biodiversity and better linkages, which is very much in alignment with Yarra Pools, as is a focus on Northbank as a key area of investment."

"We have already shared all of our research, user-needs analysis and findings of our business case, including expected patronage."

"Our interests are completely aligned with yours and we believe Yarra Pools would sit perfectly and exemplify the fabulous work within this draft. We want our concepts to be included and explored with the community as part of the strategy finalisation."

Cr Rohan Leppert responded to the submission very favourably, saying he hoped the council could learn a lot from the work done by the group in preparation of the final version of the strategy.



A render of a potential reimagination of the Northbank at Banana Alley found in the Draft City River Strategy.

"The idea of a swimmable Yarra is such a beautiful idea that I think a lot of people can get their heads around, even if we're not going to see that happening in the next year or two. It's a beautiful ambition to work towards," he said.

"Anything that works towards that goal can only be good for the health of the Yarra River as well, so I love the idea as well as the work that has been done by the Yarra Pools to work with community and traditional owners, which is something we're yet to do as part of our engagement."

The draft river strategy is underpinned by four key themes of culture (heritage and narrative), ecology (habitat and water), place (activity and character) and movement (journey and connection).

The strategy acknowledges Melbourne Water's development of the Yarra Strategic Plan, stating that it would align with the plan and act as an advocacy document to ensure council has an agreed position on the central city section of the river.

The strategy focuses on 11km of the river and its surrounds stretching from the Swan St Bridge down to Docklands, and places a great emphasis on the development of the north bank of the river.

One of its three key priorities is a "Green Line" project, which will explore investment that clearly identifies and guarantees public realm civic quality and free movement along

Flinders Walk and Banana Alley.

A council spokesperson explained that Green Line was simply a working title given to what is currently a conceptual project that is focused on improving public space and greening of the river's edges.

Yarra River Business Association (YRBA) executive officer Tim Bracher said it welcomed the long-overdue focus on Northbank, and specifically how it could link the CBD to the river.

"There are many opportunities for developing Northbank as an attractive, vibrant space, but it will probably need to involve the private sector to fulfil many of them," he said. "Developing quality public open space on the cold north side of the river is challenging."

"While YRBA was not consulted in the development of the plan, the association looks forward to having valuable input during the consultation phase. The plan will provide valuable input to our August 15 'Yarra River Big Ideas' Forum."

The strategy's two other key priorities include embracing Aboriginal culture and heritage and restoring the natural landscape.

Lord Mayor Sally Capp said that, with parks and gardens rating as the number one most visited category in Melbourne's visitor economy, the strategy was well overdue.

[participate.melbourne.vic.gov.au/city-river-strategy](https://participate.melbourne.vic.gov.au/city-river-strategy)

## Budget released for feedback

By Rowan Webb

*The City of Port Phillip council has released its draft 2019/20 budget and updated council plan for 2017-2027.*

Key highlights of the document include a rate increase of 2.5 per cent, a fees and charges increase of 2.75 per cent (most fees) and an increase in spending on:

- Water for parks, ovals and gardens;
- Security for staff and community;
- Street cleaning services and graffiti;

Council said it was also investing \$55 million in projects to maintain, grow and improve services and assets.

Insight into the council's long-term financial strategies is also provided, with an estimated \$135 million to be spent on various projects and strategies across a 10-year period.

Major investments include \$43 million to implement its sustainable environment strategy (Act and Adapt) and \$34 million to implement its integrated transport strategy (Move/Connect/Live).

The council will continue its support of pensioners, increasing the pensioner rebate by 3 per cent to \$170 in 2019/20. A 50 per cent waiver of the general rate for housing accommodation will also provide reduced rentals for elderly people of limited means.

Representatives from a range of community groups and neighbourhoods were invited to take part in a workshop on Saturday, May 4, where participants discussed which services were needed and which may not be a priority.

Residents can present submissions at a special council meeting on Tuesday, June 4, from 6.30 pm at St Kilda Town Hall.

Submissions can also be made online at <https://haveyoursay.portphillip.vic.gov.au/draft-budget-2019-to-2020-and-year-3-of-the-council-plan>

## Shape the future of the Domain Precinct

**Council is seeking your feedback on a suite of projects that aim to improve public spaces in the Domain Precinct.**

Take a short **online survey**, or attend a **community workshop** on Saturday 25 May 2019 at Seasons Botanic Gardens, Melbourne from 11 am to 2 pm.

To have your say and to register for the workshop:

☎ ASSIST 03 9209 6777

🖱 [haveyoursay.portphillip.vic.gov.au](https://haveyoursay.portphillip.vic.gov.au)



have your say

[haveyoursay.portphillip.vic.gov.au](https://haveyoursay.portphillip.vic.gov.au)

# Candidates talk Macnamara

*The Southbank Residents' Association's (SRA) Meet the Candidates event on April 16 saw more than 100 locals from Southbank, Montague and beyond turn out to question their local candidates ahead of the federal election.*

While there are nine candidates contesting the seat of Macnamara on Saturday, May 18, the SRA invited candidates from the three major parties to speak – being Josh Burns (Labor), Kate Ashmor (Liberal) and Steph Hodgins-May (Greens).

Held at South Melbourne Primary School and moderated by councillor and former City of Port Phillip mayor Bernadene Voss, the event was conducted in a very respectful manner with all candidates given clear air to share their vision for the community.

At times the breadth of questioning from the audience was surprising. A wide range of issues was covered, with the very first question from the audience focused on Wikileaks founder Julian Assange and freedom of information.

Some of the key issues covered included infrastructure, public transport, live animal exports, indigenous affairs, housing and homelessness, immigration, the economy, climate change, the ABC, equality and mental health.

Locally, issues surrounding Fishermans Bend and the Australian National Veterans Arts Museum (ANVAM) were given attention early on, with ANVAM director Mark Johnston and Montague Community Alliance convener Trisha Avery asking questions of the candidates.

Holding up a copy of the April edition of *Southbank Local News*, which featured a front-page story of ANVAM's push to establish a permanent home at the old repatriation clinic at 320 St Kilda Rd, Mr Johnston asked all candidates whether they supported its proposal.

"It's a worthy project," Josh Burns said. "I see the vision and it touches on some of the desperate health challenges that veterans are facing and it does it in a way that is admirable and is worthy of support. I don't have any announcements to make tonight."

Steph Hodgins-May said: "The Greens have thrown its support behind this proposal. Mark is a ferocious lobbyist and activist and exactly the kind of advocate you want in your court pushing for a project like this."

"We, as recently as a couple of weeks ago,



A local asks a question of all three candidates on April 16.

wrote to the Federal Government when it looked like it was going to be placed on the open market. It is in a precinct that demands respect and the integrity of this sort of museum."

Kate Ashmor said: "The work that ANVAM does is extraordinary. These are returned servicemen and women who have served your country, who experienced dreadful trauma the likes of which most of us can't imagine and it is incumbent on us as a government and as a community to wrap our arms around them and to make sure they're heard and are cared for. I really support this life-changing organisation."

While the audience was generally respectful over the night, it did have its moments. Steph Hodgins-May did well in responding to a question about internal fighting within her party, which has been well reported in recent times. A few Greens supporters also made plenty of noise a number of times in support of Steph when she addressed the forum.

Speaking on preferences, Kate Ashmor said

she wouldn't be preferencing any party that held extreme views, right or left. In what appeared to be a reference to the Greens, Steph took offence.

"Extreme is trying to open a huge coal mine on the Great Barrier Reef. Extreme is locking up people offshore giving them no hope of a better life. To talk to me about extreme Kate, the Liberal Party is where extreme politics is at," she said.

Josh Burns and Kate Ashmor also went head to head on a few occasions, such as on the issue of franking credits, which a Labor government has vowed to scrap if elected.

"Government isn't about making easy decisions," Josh said. "Since Costello brought in this policy it's been costing the country \$180 million a year. It's now going up to \$6 billion and it's going up to eight very shortly."

"That's way more than we spend on public schools right now. It's a really hard conversation but I don't think people are going to be left stranded."

Kate replied with: "Make no mistake. At this election there are two very clear paths if you're a self-funded retiree. Over 900,000 Australians who've worked hard and followed the rules, done everything right to provide for themselves."

"Many of them have a partner in aged care that they've funded through their franking credits. They're not drawing a pension, they're not a burden on the public purse. I've met them. Labor has made it very clear that they don't care about these people."

The local issue of combustible cladding was also canvassed, with each candidate agreeing that urgent action was required to protect people living in high-rise apartment towers.

"There is a lot of work to be done. Each building has to be assessed individually and there are ones that need to be prioritised," Josh said.

Steph said: "The Greens have been pushing at a local, state and federal level for an emergency cladding fund with an immediate injection of \$50 million to get on top of this issue. We can't risk the sort of disaster we've seen previously."

Kate said: "The fact that some of us here could be living in a building right now that could go up in flames and you don't even know about it is disgusting. As a private property owner you have a right to know."

The other six candidates contesting the seat of Macnamara are Ruby O'Rourke (independent), Steven Armstrong (Sustainable Australia), Chris Wallis (independent), Craig McPherson (Animal Justice Party), Christine Kay (Rise Up Australia Party) and Helen Lucy Paton (United Australia Party).

Nearby local polling booths include the Victorian College of the Arts (VCA), South Melbourne Community Centre (1 Ferrars Place), St Peter and Paul's Church (cnr of Bank and Montague streets) and Deaf Children Australia (597 St Kilda Rd).

Early voting is also open at the Melbourne Convention and Exhibition Centre (MCEC) and Deaf Children Australia.

**SPECIALS**

*The Perfect Waxing Package*

SAVE **15%**

**CUT & BLOWWAVE**

JUST **\$80**

**OFFICE BREAK MANI & PEDI WITH SHELLAC**

ONLY **\$99**

**FULL LEG, BRAZILIAN, UNDERARM, EYEBROW & UPPER LIP**

**30% off IPL**

**RoopRani**  
hair & beauty salon

**P5 SOUTHGATE COMPLEX - PH 9686 6504 - WWW.ROOPRANI.COM.AU**

\* T&C's Apply.



# MELBOURNE SQUARE®



ASIA PACIFIC  
PROPERTY  
AWARDS  
**AWARD  
WINNER**  
2019-2020



ARTIST'S IMPRESSION - COMBINED APARTMENTS 6701, 6704, 6702 & 6703

# THE COUTURE SERIES

AN **ARTS** STORY

## A truly tailored lifestyle.

The Couture Series at Melbourne Square harnesses the fluidity of today's lifestyle needs in an elegantly responsive residential offering of 3–5 bedroom residences.

With a unique opportunity to tailor design elements of your home in collaboration with iconic firms Cox Architects, Carr Design and HUB Furniture, The Couture Series from levels 55-68, redefines the bespoke lifestyle experience.

Perfectly positioned on the fringe of an internationally renowned arts precinct, Melbourne Square residents can enjoy the very best of the city's celebrated cultural scene just moments from home.

**Don't miss this last opportunity to tailor your new home.**

\*Prices can vary depending on size of residences.

The Couture Series  
**\$1,371,200-\$12M\***  
Move in 2020

### RESIDENCES NOW SELLING

2 bedroom \$670,200\*  
3 bedroom \$1,103,200\*

### DISPLAY GALLERY OPEN DAILY

11am-5pm Corner Power St & Kavanagh  
St Southbank Melbourne, Victoria

**CBRE**

1300 888 770 MELBSQUARE.COM.AU

carr



COX

GAGGENAU

KOHLER

OSK  
PROPERTY





# Boyd Park is flying

*The new park at Boyd is on track for a winter opening, with the community garden and a temporary basketball court already open to locals.*

The communal garden, which is managed by the Southbank Sustainability Group, was opened in the Boyd Community Hub forecourt in April. The basketball half court, which was formerly located at the rear of the assembly hall, has been relocated to the site of the future development.

This space can be accessed from the Kings Way boundary of the Boyd site. It also comes complete with a pop-up orchard, which has also been provided to the Southbank Sustainability Group to manage.

The basketball court will eventually be permanently located to the reimagined Kings Way under-croft as part of the council's City Road Masterplan. *Southbank Local News* understands that the masterplan will receive funding in the upcoming 2019/20 council budget, with the draft annual plan and budget to go before a special council meeting on May 9.

Locals will also have noticed new palm trees being planted on the site. The council has said more tree planting, as well as the installation of park furniture will further roll



*The community garden (top) and half court (bottom).*

out this month.

"This month we commenced planting the new palms, completed the new seating walls and edges around the park and commenced excavation into Kavanagh St for the park expansion," a council spokesperson said.

"In the coming weeks, we will install park furniture, play spaces and new shrub and tree planting. The park is on schedule to be completed by winter 2019."

For updates visit: [participate.melbourne.vic.gov.au/boydpark](http://participate.melbourne.vic.gov.au/boydpark)



# Nurse training

*Holmesglen has added to its inner city offering with a new specialist nursing campus in Bourke St in the CBD.*

The campus, located at 206 Bourke St, is providing students with a greater opportunity to pursue their Diploma of Nursing and engage with their future healthcare careers.

The facility was acquired from Navitas' Health Skills Australia and has been designed as an "industry city", where students can learn practical, work-ready skills side-by-side industry partners.

"The Bourke Street campus features recently refurbished, state-of-the-art simulated labs. By being located in the heart of the city, with convenient public transport nearby, we feel this is a wonderful

opportunity for more students to explore their nursing studies," campus manager Lindsay Bava said.

The move into the CBD continues the growth of Holmesglen's nursing training. Holmesglen received the Industry Collaboration Award at the 2018 Victorian Training Awards for its Healthscope partnership and establishing Australia's first TAFE-based hospital at the Moorabbin campus.

The Bourke St location also serves as a complement to the Institute's St Kilda Road campus in Southbank, which offers courses in fashion, early childhood education, event management and accounting.

The Diploma of Nursing is on the Government of Victoria's free TAFE list.

You can find out more about Holmesglen's Diploma of Nursing at [holmesglen.edu.au](http://holmesglen.edu.au) or visit the Bourke Street campus at the next Open Day on May 9.

# 2019 COURSES

## AT HOLMESGLEN CITY CAMPUS holmesglen

### BUILDING CONSTRUCTION

- CPC50210 Diploma of Building and Construction (Building)
- CPC40110 Certificate IV in Building and Construction (Building)
- BSB41415 Certificate IV in Work Health and Safety
- BSB51315 Diploma of Work Health and Safety
- OHS and Safety short courses

### FASHION DESIGN

- BFD16 Bachelor of Fashion Design
- MST40516 Certificate IV in Applied Fashion Design and Merchandising
- MST20616 Certificate II in Applied Fashion Design and Technology

### BUSINESS AND FINANCE

- MPA14 Master of Professional Accounting
- SCPDDM16 Certified Digital Marketing Professional
- Agent's Representatives Course

### TOURISM AND EVENTS

- SIT50316 Diploma of Event Management
- SIT40116 Certificate IV in Travel and Tourism

### EARLY CHILDHOOD EDUCATION

- CHC50113 Diploma of Early Childhood Education and Care
- CHC30113 Certificate III in Early Childhood Education and Care
- CHC30213 Certificate III in Education Support

### ENGLISH COURSES

- English plus
- English for Early Childhood Education
- OET Preparation
- CELTA

### SPORT

- BSPB16 Bachelor of Sport Business
- BSM13 Bachelor of Sports Media

### COMMUNITY SERVICES

- CHC52015 Diploma of Community Services

**Call 1300 639 888 to apply now, or visit**  
 Holmesglen City Campus  
 332 St Kilda Rd, Southbank  
[holmesglen.edu.au](http://holmesglen.edu.au)

CRICOS Provider Code: 00012G. RTO-0416.

Please support our advertisers because without them we would have no Southbank Local News

# Providing a voice for young people

**Independent candidate for Macnamara Ruby O'Rourke says she wants to see the electorate become a beacon of Australia for young people's rights.**

Ms O'Rourke works for the Commonwealth Government in children's health, education and protection. She also established the charity Healthy Australia, which she has resigned from in order to contest the May 18 federal election.

Having been adopted as a baby and experienced terrible trauma and abuse as a ward of the state, the 50-year-old mother told *Southbank Local News* that said she had been an advocate for young people her whole life.

While her policy platform is based on a number of initiatives that seek to restore and improve transparency and human rights in our society, its focal point is her wish to introduce a Youngs Person's Rights Bill to parliament.

"I'm running for parliament because I



don't think government is honest in caring for children. I don't think they're honest about the consequences of young people's outcomes," she said.

"If regulatory impact statements that get put into the senate for debate on every bill have a young people's impact statement in there they have to consider the consequences of bad decisions."

Ms O'Rourke said she wanted to bring more people into politics through the bill. She also would like to see 16-year-olds given the vote and said after the election she aspired to set up a Young People's Party.

[facebook.com/VoteIRuby](https://facebook.com/VoteIRuby)



The former 3AW building on Bank St, which was demolished last year to make way for a 19-storey tower.

## Asbestos concerns

**A South Melbourne building site in the Domain Precinct has been called to question over asbestos contamination.**

The site at 41-49 Bank St, South Melbourne, which was formerly home to radio broadcaster 3AW, is earmarked for a 19-storey residential apartment complex by developer Virgate Property Group.

According to a hazardous material assessment conducted by environmental consultants Prensa in April 2018, the former building contained high levels of friable asbestos prior to the start of its demolition in May. Prensa advised that removal works be undertaken by a class A (friable) licensed asbestos removal contractor.

According to WorkSafe, friable asbestos when dry can be crumbled, pulverised or reduced to powder by hand pressure, and ultimately poses a health risk due to the greater potential release of airborne particles.

Local residents from neighbouring Capri Apartments originally expressed concerns to authorities after it was alleged that demolition works began before a demolition notice was issued by the Victorian Civil and Administrative Tribunal (VCAT) in June.

The Victorian Branch of the CFMEU also alleged in July that the company responsible for the demolition, which is not a class A asbestos contractor, had removed asbestos material from the site illegally.

The building has since been fully demolished and a temporary showroom for the new development has been constructed on the site. WorkSafe took no legal action against the developer or demolition company over the asbestos removal.

WorkSafe told *Southbank Local News* that it had visited the site numerous times since demolition and had no current concerns. City of Port Phillip Mayor Dick Gross also said that the council was very satisfied with WorkSafe's assessment.

Cr Gross said: "Our position is based on a rigorous safety and assessment process including:

A licensed asbestos assessor, accompanied by WorkSafe officials, inspecting the entire site in November last year before providing a clearance certificate to WorkSafe in accordance with legislative requirements;

WorkSafe advising council's municipal building surveyor (MBS) that this site does not pose a risk to the public; and

Our MBS receiving a clearance certificate and air monitoring information from an independent asbestos hygiene service, which monitored the friable asbestos removal during demolition."

During its November inspection, the council said WorkSafe had taken samples for analysis and that only one sample was identified as containing asbestos. The sample was found in cement sheet pipes located within a concrete slab that has since been encapsulated and covered in a timber barricade, which meant the asbestos was safe from disturbance.

But Capri resident Tanya Canfield, who has lobbied authorities on the issue since it first emerged, engaged asbestos testing company iRisC to analyse three separate samples she claims to have taken from the site between October and November.

The iRisC report found that the samples each contained levels of asbestos and while it stated that it took no responsibility for the sampling methodology or sample location, Ms Canfield believed residents deserved a more thorough remediation of the site.

"No one expects government departments to turn a blind eye to a poor demolition, which is exactly what happened and they are failing to want to resolve this. Enforce immediate remediation and make the companies responsible take full accountability," she said.

"It's not safe, it's not ok and it should never have happened. Several companies have been exposed unwittingly whilst companies failed to tell the truth. Our community's health and safety aren't up for negotiation. Asbestos exposure is harmful and we won't accept living next to a contaminated site. It must immediately be remedied."

Ms Canfield has started an online petition, which can be found here: [chng.it/Mp4fnVJGFV](https://chng.it/Mp4fnVJGFV)

Virgate Property did not respond to *Southbank Local News* for comment.

## Whittles

Owners Corporation Management Services



Established in 1968 Whittles is the largest Australian owned strata management company and widely recognised for its experienced staff and the provision of professional strata management services nationally. With specialist expertise in prestigious high-rise buildings, marinas, commercial and residential, Whittles is proud to be part of Southbank in Melbourne.

[whittles.com.au](https://whittles.com.au)

For superior owners corporation management services, contact the Docklands dedicated team

Whittles, Level 1, 838 Collins Street, Docklands VIC 3008  
T 03 8632 3300 E [info.docklands@whittles.com.au](mailto:info.docklands@whittles.com.au)



# Cat survives 18-storey fall

**Local resident Amy Thompson is appealing for support after her three-year-old cat Charlie miraculously survived an 18-storey fall from her Southbank apartment.**

The Whiteman St resident returned home from work in early April to discover Charlie missing from her apartment. After realising that she'd accidentally left her balcony door open, she immediately feared the worst.

"I got home and realised he wasn't here so I went down and grabbed the concierge," Amy said "He grabbed a torch and there is a ledge over a metre high where the garden is so he got up there and shone the torch and spotted him there."

While Charlie was still alive, he had suffered both a fractured jaw and leg for his troubles. Thanks to some kind neighbours in her building, who helped get Charlie off the roof and drive he and Amy to a 24-hour vet clinic

in Kensington, he was saved.

However, with his severe injuries have come severe bills for Amy, which between vet surgery and associated medical costs, have totalled north of \$6000.

"His jaw is fractured on both sides and in the middle," she said. "It had to be stabilised with pins and that stuff on the outside just holds them in place. There are pins in the fracture in his leg and the splint keeps his toe straight"

"He's eating out of a tube because he's not allowed to get anything in his mouth from the risk of infection."

Amy said that the challenge of caring for her friend through his recovery had taken its toll on her, but that she was confident that he would be back to his usual "playful" self soon.

Amy has set up a crowdfunding page to help subsidise her losses over Charlie's accident, which she said had already received some generous support.

To donate to Charlie: [au.gofundme.com/My-cat-Charlie-fell-from-18-floors](https://www.au.gofundme.com/My-cat-Charlie-fell-from-18-floors)

# Developer hedges its bets

**In a sign of the times, a developer in the Montague Precinct of Fishermans Bend is proposing to develop a temporary childcare centre on half of the site of its Buckhurst St development.**

With the apartment market experiencing an ongoing cool period, developer Human Habitats has submitted an amended application to Minister for Planning Richard Wynne proposing a four-level childcare centre on the corner of its 6-70 Buckhurst St site.

The site, which holds a permit for four 30-storey high-rise apartment towers, has changed hands three times since it was first approved in 2014. Human Habitats purchased the site early last year.

While it is still proceeding with plans to develop the first two towers, stages three and four, which include a further two towers on the Buckhurst and Kerr streets corner of the site, will instead be home to a temporary

childcare centre under the amended plans. "Stage Zero", which went before the City of Port Phillip's planning committee on April 24 for comment, is proposed to be a temporary building that occupies the footprint of stages three and four. It is proposed that the building be demolished at an unspecified later date to allow for the construction of the two towers by September, 2027.

The application notes that should the towers not be completed by that date, "Stage Zero" would be allowed to remain indefinitely.

The four-level development, which sits directly opposite the new Kirrip Park, would include a childcare centre with capacity for 304 children, a minor sports and recreation



A render of the "Stage Zero" looking from Ferrars St past Kirrip Park in Montague.

facility with a swimming pool, retail premises (including food and drink) and car parking.

City of Port Phillip councillors unanimously endorsed the plans on April 24 subject to

a number of conditions, including that a master plan for the development be submitted as part of a permit being issued by the Minister for Planning.

ADVERTISEMENT

## If you don't deal with coal, you don't deal with climate change.

**Steph and the Greens will take real action on climate change.**

The major parties have no plan for climate change.

The Greens are the only party heading into this election with a fully costed plan, backed by the science, to tackle climate change, create 180,000 jobs and drive our economy into the future.

|  | LIBERAL | LABOR | GREENS |
|--|---------|-------|--------|
| PHASE OUT COAL EXPORTS AND STATIONS      | ✗       | ✗     | ✓      |
| RULE OUT NEW COAL MINES, INCLUDING ADANI | ✗       | ✗     | ✓      |
| REFUSE DONATIONS FROM THE COAL INDUSTRY  | ✗       | ✗     | ✓      |
| GET TO 100% RENEWABLE ENERGY BY 2030     | ✗       | ✗     | ✓      |

"This is the climate election and with only 477 new votes, we can win."

This election, use your vote to demand action on climate change.

Vote

**STEPH HODGINS-MAY**  
Candidate for Macnamara



# Suspense builds on new NGV gallery

By Rhonda Dredge

**Signature buildings do a lot to lift a community and architect James Pearce is feeling upbeat about Southbank and the upcoming design of a new contemporary gallery at the NGV.**

His company Fender Katsalidis is responsible for many of the prominent buildings in Southbank, including the Eureka Tower and Australia 108, the country's two tallest buildings.

The company is keen to submit a design for the new gallery but the NGV has yet to announce the details of the architectural competition.

James is happy to philosophise about the process, having been the project architect on the MONA gallery in Hobart, which has successfully made its mark on the global art scene.

"Art galleries are cultural institutions," he said. "Art is international but the institution that displays art should be aligned with the sensibilities and culture of its place."

He talks about the Bilbao effect. "One transformative building can change a whole city. It happens a lot. There's a comment that MONA has done the same thing for Hobart."

Unlike flamboyant structures that stand out from a distance, the logistics of the MONA site demanded respect for two heritage buildings designed by Roy Grounds and the solution was to burrow underground.

"I think the best architecture comes from the strongest constraints because it takes lateral thinking to come up with a solution outside the box."

James likes buildings that show visitors how they are constructed, so he rejected the expressive statement on the outside and white box on the inside that overseas galleries prefer.



Architect James Pearce outside the Bond Store.

His favourite building in Southbank is the Bond Store, a brick warehouse in which the metal girders are apparent and the evenly-spaced rivets form beautiful textures as well as hold the plates together.

"We wanted a real building at MONA that was true to itself like here at the bond store. It was not meant to be a monument."

He says that the design was more a case of fitting in a structure between the high tide mark and the top of the hill.

Similarly, the Eureka Tower was not an attempt to win the height competition but a combination of two 40-storey towers that would have cast a large shadow over the precinct. "We solved the problem with a tower on top of a tower."

Architects love to find clever solutions. The Fender Kastalidis office is in the PWC

Building on Riverside Quay, a box built on a multi-level carpark and supported by poles. Beneath it a laneway has been formed which is gradually coming alive.

While some regard the development in Southbank over the last 20 years to be slapdash, James disagrees. "Southbank doesn't have the hierarchy of scale. It was a big industrial area with big plots of land surrounded by roads. The tertiary lanes never happened."

He concedes that most of the action faced the riverbank and the fine grain was not included in the early projects.

"Southbank started out in a different stage of the economic cycle. It started out when things were a bit slower. There was a lot of encouragement by the government for things to happen. It's a victim of its own success."

Now that is changing with Mirvac leasing out the rear of buildings to cafes which makes the precinct more human-friendly.

Art galleries in particular can stamp the personality of a city on visitors, he says.

"As humans we are always trying to understand ourselves better. Why do we produce art and what do we get out of it? It gives us something to think about beyond ourselves."

There has been criticism of the last renovation of the NGV with international architects showing little respect for the Roy Gounds courtyards.

James is hoping there will be an open competition for the NGV tender process and that firms on the short list have a chance to work together.

"The process has a huge effect on how it turns out. You need a close relationship between the client and architect. That won't happen in a competition. They are good for ideas."

International companies should be encouraged to submit but not given preferential treatment, he said.



Claire Spencer greets Human Nature on May 1.

## The Vault marks a million!

From page 1

Andrew Tierney, Michael Tierney, Phil Burton and Toby Allen of Human Nature are currently celebrating 30 years of music and were welcomed into the Australian Music Vault for the time in the *Two Way Traffic* display with their circa 2000 Motown suits.

"When we set out to establish a space in partnership with the music industry where music lovers could immerse themselves in the rich history of Australian music, we knew it would have a strong and meaningful impact," Claire Spencer said.

"To have welcomed one million visitors is such an incredible moment for us and we look forward to exploring these stories further for many years to come."

The free permanent exhibition is a key initiative of the state government's Music Works strategy and was developed by Arts Centre Melbourne in partnership with the music industry.

Minister for Creative Industries Martin Foley also welcomed the milestone.

"Melbourne is the undisputed home of live music and the incredible success of the Australian Music Vault in such a short time shows just how important music is to this city and Victoria," he said.

While Mum and Dad muck around at work,

We have more *Important* things to do.

Book a tour today!

Open Monday - Friday 7am - 6pm



Jumbo Early Education

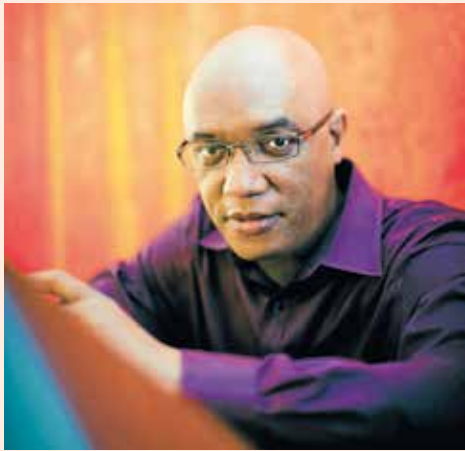
9099 1180

jumboearlyeducation.com.au

"Oh Jumbo, what an oasis of kid heaven you are. We have moved to Sydney and back in the last two years, we have seen some centres, and fortunately very good ones. Nowhere else have I experienced my little girls being so excited to arrive each and every time. Jumbo is so welcoming, inspiring, clean and fun. Nothing makes me as a mum happier than collecting happy children at the end of our day. Jumbo feels like a home away from home and is without question Australia's leading boutique childcare centre with true quality care and education."

Anna, mum of Indigo, 3 years old

# THE ARTS PRECINCT



Billy Childs



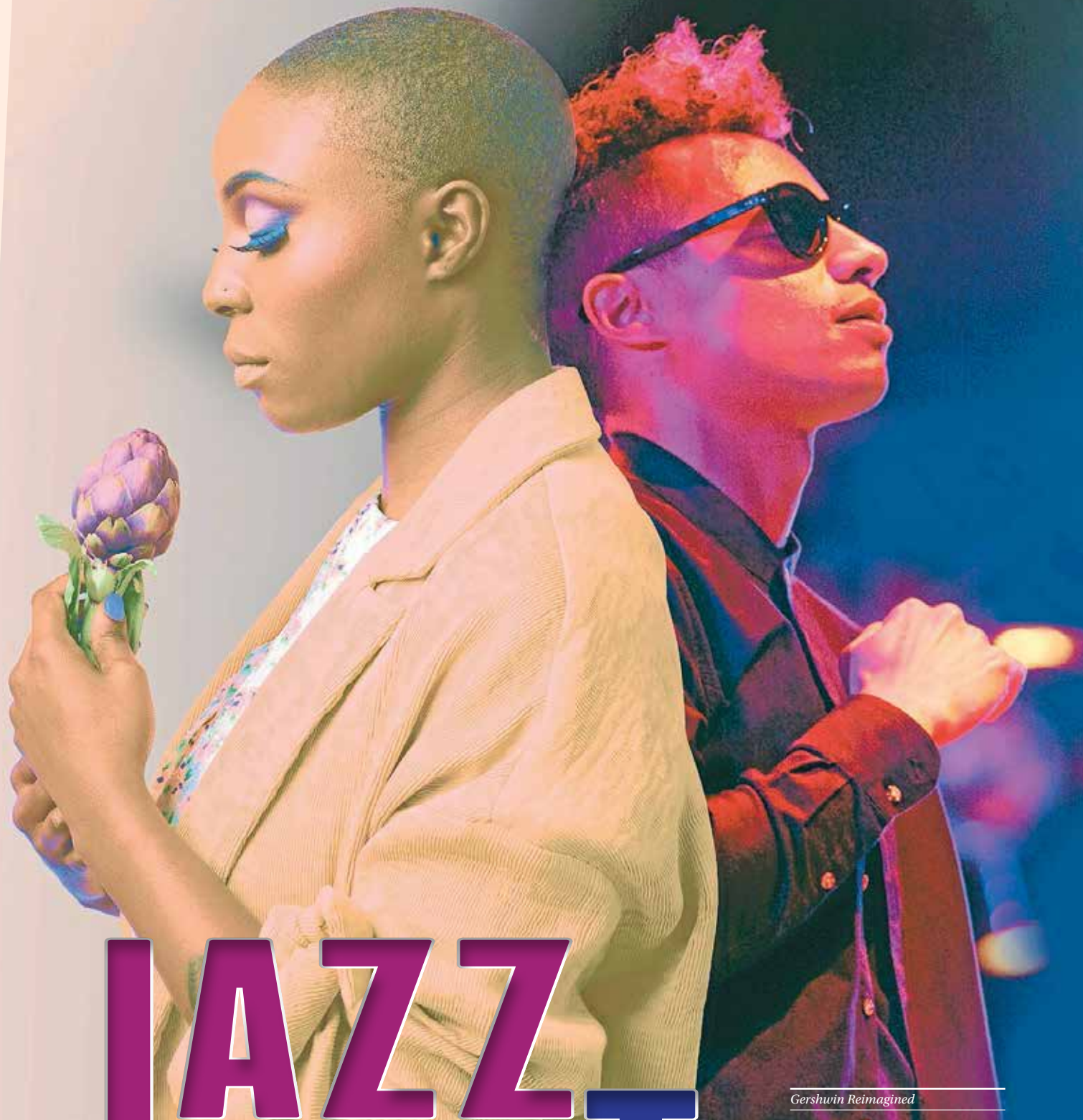
Lisa Fischer & Grand Baton



Vince Jones



Herbie Hancock



# JAZZ FEST

The Melbourne International Jazz Festival (MIJF) returns to Southbank in June to once again reach the hearts of people across Melbourne and Victoria.

Featuring more than 350 Australian, international and emerging artists, the festival, now in its 22<sup>nd</sup> year, will take place in 25 venues across Melbourne from intimate jazz clubs to vibrant cafe gigs and free community events.

As usual, Southbank's world-class Hamer Hall at Arts Centre Melbourne and the Melbourne Recital Centre will light up the festival with major headlining performances.

The 2019 festival will be launched on May 31 with *Gershwin Reimagined*. Hamer Hall will host the amazing vocals of Laura Mvuala and the festival favourite hip-hop artist Jose James. They will be performing a series of Gershwin works as interpreted by conductor, composer, producer and musician Troy Miller.

On the same night, Melbourne Recital Centre will play host, for the first time, to a five-time Grammy winner Billy Childs

with his quartet, Dayna Stephens, Alex Boneham and Christian Euman. They will perform from the album *Rebirth*, which was rewarded the Best Jazz Instrument Album at the 2018 Grammy Awards.

Next up, on June 5, Lisa Fischer, with her magnificent vocals, will be take to the Melbourne Recital Centre stage with Caribbean jazz-rock fusion band Grand Baton. They will be transforming originals and recasting rock anthems from the famous Led Zeppelin and Little Willie John.

For more than four decades, Lisa Fischer was one of the most in-demand backup singers for artists like Beyonce, Nine Inch Nails and The Rolling Stones and many others and now has taken the centre stage.

On June 6, the festival will once again feature Vince Jones: a leading jazz vocalist and a musical storyteller. He will be transforming the stage with a selection

of songs from his remarkable 20-album international career.

A singer, songwriter and trumpeter, Jones is America's leading jazz vocalist. Starting his jazz career as a bebop trumpeter player, he is an outstanding interpreter and composes songs in a contemporary jazz style.

The festival will close on June 8 and 9 at Arts Centre Melbourne with the much-awaited Herbie Hancock, the master of modern jazz and 14-time Grammy award winner.

An innovative and a living legend, Hancock has iconic partnerships with artists like Wayne Shorter, Snoop Dog, Pink and many more. In his six-decade career, he is known as one of the few artists to have influence on acoustic and electronic jazz, hip hop and R&B.

[Melbournejazz.com](http://Melbournejazz.com)



## Listen to Indian classical music

By Sakshi Agrawal

Start two days this month and in June with the sounds of Indian classical music at the Southbank Dawn Raga Series.

Designed by Arts Centre Melbourne and Multicultural Arts Victoria, two free concerts provide the audience with an opportunity to listen to the spiritual sounds of sitar, flute, veena and the beats of the tabla.

They will feature Melbourne-based Indian musicians, Jay Dabgar, a tabla specialist, Vinod Prassana on Indian flute, bansuri, and Hari Sivanesan on sitar. They will perform alongside internationally-acclaimed Indian musician, Pandit Purbayan Chatterjee, who will be playing the sitar.

The concert, with its uplifting and soothing music, promises to elevate the audiences's mental state and prepare and energise them for the day ahead.

Jay Dabgar said: "Indian classical music actively demonstrates humanity's deep emotional connection with nature and our surrounding environment"

The concerts will be held at 7.30am on May 24 and June 21 at Hamer Hall.

Critic



## Shining a light on the wealthy

By Rhonda Dredge

Cleante and Elise are upset with their father because he won't give them any money to pursue their love interests.

Cleante is in love with the poor but beautiful Mariane and Elise with Valère, a young woman who has disguised herself as a servant.

The two siblings plot to gain access to their father's 10,000 gold crowns.

Molière's comedy *The Miser* provides glimpses of the social roles played in 17th century France. Unlike Shakespearean comedies, the lovelorn siblings do not lapse into inwardness but immediately begin making deals.

There are so many counter plots and crosscurrents in this comedy that telling gestures and epigrams reign supreme.

Bell Shakespeare company staged the play to give its former artistic director a meaty part and John Bell certainly makes a witty wheeler-dealer as Harpagon in the production at the Fairfax Studio.

He hops around like a flea as do many of the cast in this fast-moving visual treat complete with wigs, flares, frills, sculpted jackets and feathers. It's a case of using anything that will enhance a pose.

Comedies give villains a bit of space to perform and the translation of Molière's rhyming couplets from French tap into the language of insult.

The miser Harpagon is a foul-mouthed old codger who projects wildly onto all and sundry: "Piss off you swindler." "Stingy

bastard." "Sleaze bag."

This is a new adaptation of the play by Sydney playwright Justin Fleming and he has put quite a lot of Aussie vernacular into the miser's mouth.

"The trouble with talking to yourself is that the older you get the louder it gets," Harpagon says a little reflectively.

Just Frosine, the clever matchmaker, is a match for the odious Harpagon, appearing as she does in a vivid lilac pants suit with flared sleeves.

"He doesn't give you the time of day, he lends it," she quips.

Frosine uses flattery to win Harpagon over to the idea of taking on a young bride, none other than Mariane. 60 is the new gorgeous, Frosine claims. Mariane even has pin-ups of Methuselah and Peter O'Toole on her wall.

When Cleante rebels and applies for a loan so he can marry Mariane himself it's at the interest rate of 25 per cent with 3000 francs deliverable in the form of furniture.

This leads to an anecdote about borrowing to buy a sheep. When the borrower realises he's been fleeced he chucks the sheep over a cliff and has to eat his own grass.

Just one major concession is made to modern tastes and that is in the role of Valère, the servant lover of Elise, who is played by Jessica Tovey and this adds a small amount of friction.

Overall, however, the deception and long-windedness are more suited to politics than drama with the contrivances and reveals applied in a formulaic manner.

Superb performances by fawning servants, particularly the clever and manipulative Valère, steal the show in shining a light on the wealthy.

*The Miser*, Molière, Bell Shakespeare Company, Fairfax Studio until May 12.



## NGV's summer series

By Sakshi Agrawal

Keith Haring and Jean-Michel Basquiat's "Crossing Lines" will be The National Gallery of Victoria's (NGV) blockbuster summer series for 2019-20.

Featuring two of the most influential artists of the '80s, Keith Haring (1958-90) and Jean-Michel Basquiat (1960-88), *Crossing Lines* provides an insight into both the artists' distinctive visual language and the intersections between their practices, lives and ideas.

It will showcase more than 300 artworks including paintings, photographs, sculptures, objects, works on paper, works made in public spaces and more.

Curated by Dr Dieter Buchhart, an art historian, come and see some iconic images that include Haring's baby motif and dancing figures and Basquiat's crown and head motifs.

This Melbourne-exclusive exhibition will begin with the earliest works of the artists from the streets and subway stations of New York City and will display works from both their first exhibitions. It will also stage the artists' collaborations with icons, Andy Warhol, Grace Jones and Madonna.

Martin Foley, Minister for Creative Industries, said: "Keith Haring and Jean-Michel Basquiat shook the foundations of the art world. They used their work to highlight vital issues of the time and they created a legacy that continues today."

NGV's 2018/19 summer exhibition, *Escher X nendo | Between Two Worlds*, closed earlier last month.

Keith Haring / Jean-Michel Basquiat: *Crossing Lines* will run from December 1, 2019 until April 13, 2020 at NGV, Southbank.

## COMING UP IN JUNE



LINDA MAY HAN OH  
Sat 8 June 7.30pm

*Aventurine* is a stunning, rhythmically charged new work from acclaimed bassist and composer Linda May Han Oh. Performed by a quartet of fearless jazz improvisers, this extraordinary Australian premiere is destined to be a Melbourne International Jazz Festival highlight.



MEGAN MULLALLY &  
HER BAND NANCY AND BETH  
Wed 12 & Thu 13 June 7.30pm

Famous for playing the iconic and beloved Karen Walker in *Will & Grace*, Megan Mullally turns musical misfit in the cleverest cover band to champion female empowerment. Brace yourselves for the 'savagely funny' (*L.A. Times*) musical stylings of Nancy And Beth and let the laughter ensue.



HAUSCHKA  
Fri 28 June 8pm

A pioneer in the field of 'prepared piano', German composer, songwriter and musician Hauschka conjures an extraordinary range of sounds. He performs works from his new album, back catalogue and feature films *Lion* and *Hotel Mumbai*.

10

years of  
great music

MELBOURNE  
RECITAL  
CENTRE

TO BOOK: 9699 3333  
[melbournerecital.com.au](http://melbournerecital.com.au)

CNR SOUTHBANK BLVD &  
STURT ST, SOUTHBANK

Twitter Facebook Instagram SoundCloud #melbrecital

PRINCIPAL GOVERNMENT PARTNER

CREATIVE VICTORIA



LOUISE CHEN

## Connecting with community

Social justice and a desire to connect with people and our environment, are what drives Louise Chen.

Naturally, those same passions also inspire her photography. Having spent her life working for various not-for-profits and championing a number of causes, the Photography Studies College (PSC) student is currently working on a number of projects with the Wilderness Society as a volunteer photographer.

"I use my photography to give myself a voice," Louise said. "For me it's a no brainer. One of the things that is actually keeping the climate balanced is having trees and

the more that we continue to clear the trees and deforest in such an aggressive way it is a pretty sort of bleak future. Once you've visited and been out to the logging coops it has such an impact."

"We were asked to think of something that we were passionate about for our folio and I just hunted them [the Wilderness Society] down. I was invited to some forest tours a few years ago and then the relationship just grew from there."

Louise said her passion for social justice

stemmed from a young age. Raised by parents who cared deeply about issues affecting our planet, she said she was exposed to lots of protests and meetings early on in life.

She was just 15 when she first engaged with the Wilderness Society, when she attended the First Gulf War protests. Her upbringing has inspired a life of activism and campaigning, which has largely manifested through documentary film making and photojournalism.



Photos captured by Louise for the Wilderness Society's Great Forest National Park campaign.



"I came into photography because I was absolutely fascinated by documentaries," Louise said. "I love learning and I love to change the way that people think about things and to give people an opportunity to get a broader understanding."

"We don't always get everything we need from the media and often you have to go a search for the answers and that's what I'm doing. I'm on a journey of searching for the answers."

While she's covered a range of issues including homelessness, indigenous rights and LGBTQI rights, it's the preserving the environment that is inspiring a lot of her current efforts through her work at the Wilderness Society.

Her current project, which focuses on putting on a stop to deforestation, captures images for the Wilderness Society's campaign for the Great Forest National Park in the Yarra Ranges near Mt Baw Baw.

The campaign calls on the state government to create and add a new 355,000 ha of protected forests to the existing 170,000 ha of parks and protected areas in the Central Highlands of Victoria.

This would help to ensure an end to deforestation, protect endangered wildlife, promote tourism and aid in our efforts to mitigate climate change and Louise said she hoped her photography would help cast a spotlight on the issue.

"Deforestation has had a massive impact on our native animal species seeing many of those species critically endangered and extinct. It takes thousands of years for these delicate ecosystems to develop," she said.

"Further to that, the logging takes place in our water catchment areas. To protect these areas, this will provide future water security for Victoria in a climate that's getting dryer and hotter. Our clean air and water supplies depend on this park proposal going ahead."

[louisechenphotography.com.au](http://louisechenphotography.com.au)



Matthew McKay

Pip Chapman

Dee Britnell



### Mid Year Enrolments Now Open

Put some warmth into the cooler months with a fun, supportive and hands-on course at PSC. Join our creative community for the mid year intake and enjoy all PSC has to offer.

All ages and skill levels welcome | Full time  
Part time | Study day or evening

Book a personal college tour:

<https://www.psc.edu.au/about-us/contact-us>

MASTERS | DEGREES | DIPLOMAS | CERTIFICATES SHORT COURSES

Find out more

[PSC.EDU.AU](http://PSC.EDU.AU) +613 9682 3191



[info@psc.edu.au](mailto:info@psc.edu.au) | 65 City Road, Southbank VIC 3006

# EVENTS



## COSI

**Until June 8 - Southbank Theatre, *The Sumner***  
A darkly funny and deeply moving ensemble piece, *Cosi* has occupied a special place in the hearts of Australians since Toni Collette, Ben Mendelsohn and Barry Otto starred in the acclaimed 1996 film. With its motley crew of loveable characters, *Cosi* offers a poignant reminder of the transformative power of music and performance, and how art can make us soar – even if just for a moment.  
[www.melbournerecital.com.au](http://www.melbournerecital.com.au)



## MARK LANG

**May 16 - Primrose Potter Salon**  
Rich with melody and storytelling, acclaimed singer-songwriter Mark Lang returns to showcase works from his new release. Returning home from an extensive North American and European tour this concert features collaborations with acclaimed animators and visual artists.  
[melbournerecital.com.au](http://melbournerecital.com.au)



## THE TEMPLE

**Until May 26 - Beckett Theatre**  
Join an orgy of comedic performers for a short course on how to be human. Everything's set for a group session of gags, traumas, banter and tantrums—each as hysterical as the last. Dubliner Gavin Quinn concocts a wild Irish brew with Australian ingredients.  
[malthousetheatre.com.au](http://malthousetheatre.com.au)



## ROMEO AND JULIET

**May 10 - 13 - Hamer Hall**  
After his memorable debut conducting Rachmaninov with the MSO in 2017, rising Russian maestro Stanislav Kochanovsky returns to transport us to Shakespeare's fabled tale of the star-cross'd lovers, *Romeo and Juliet*.  
[mso.com.au](http://mso.com.au)

## AUSTRALIAN MUSIC VAULT

**Ongoing - Arts Centre Melbourne**  
The Australian Music Vault features a free, immersive exhibition showcasing Australian music, innovative digital participatory experiences and iconic objects from our Australian Performing Arts Collection.  
[australianmusicvault.com.au](http://australianmusicvault.com.au)

## ALEXANDER CALDER: RADICAL INVENTOR

**Until Aug 4 - National Gallery of Victoria**  
*Radical Inventor* presents approximately 100 sculptural and pictorial compositions made by renowned American artist Alexander Calder (1898–1976), drawn from private and museum collections in North America, including a substantial number of works lent by the Calder Foundation, New York.  
[ngv.vic.gov.au](http://ngv.vic.gov.au)

## CLOUDSTREET

**Until June 16 - Merlyn Theatre**  
This is a once-in-a-generation chance to see Tim Winton's award-winning story on stage, and in 2019 Malthouse Theatre ups the ante. Encounter the epic story with a ticket to the full *Cloudstreet Experience*, where you will see the whole story in one event, with dinner or lunch provided. Or choose to discover the story over two nights.  
[malthousetheatre.com.au](http://malthousetheatre.com.au)

## NATIONAL ANTHEM AND A NEW ORDER

**Until July 7 - Buxton Contemporary**  
Buxton Contemporary, home to the remarkable Michael Buxton Collections, marks its first birthday with two new exhibitions: *National Anthem* and *A New Order*, running until July. These free exhibitions invite us to scrutinise crucial moments in the recent history of Australian art and the ideas that continue to shape the nation.  
[buxtoncontemporary.com](http://buxtoncontemporary.com)



## PSC OPEN DAY

**May 11 - Photography Studies College**  
Study part time. Day or evening options. All ages and skill levels welcome. Landscape, portrait, still life, documentary, creative expression, digital workflow. Join us at Open Day to explore your options and join our happy, creative community. Register online.  
[psc.edu.au/open-day](http://psc.edu.au/open-day)



## SENEGAMBIAN JAZZ BAND

**May 22 - Primrose Potter Salon**  
With influences from Gambia, Senegal, Ethiopia, Ghana and Australia, the five-piece band share its outstanding talent and flair, channelling over eight thousand years of African musical traditions, transporting the power and beauty of these ancient sounds, rhythms and melodies to euphoric audiences across Australia.  
[melbournerecital.com.au](http://melbournerecital.com.au)



## TOM NICHOLSON: PUBLIC MEETING

**Until June 16 - ACCA**  
Reflecting the complex dynamic between historical traces and speculative futures in Tom Nicholson's drawing, sculptural and social practice, this is the first large-scale exhibition to survey the scope of the artist's practice. Initially trained in drawing, a tradition that deeply informs his practice, Tom Nicholson is one of the most prominent Australian artists on the international stage.  
[acca.melbourne](http://acca.melbourne)



## PHOTOGRAPHY TOUR SOUTHERN CHINA + HK

**Departs Sep 15 - Photography Studies College**  
Photograph dawn cormorant fishermen, ancient Zhuang people, karst mountains, giant pandas, Tibetan villages and more. Plus one lucky tour participant will WIN a \$2500 camera from Ted's Cameras. Bookings close soon. Places limited to 14. Call for information pack 96823191.  
[psc.edu.au/china-2019](http://psc.edu.au/china-2019)

# SOUNDPROOFING WINDOWS

FOR BODY CORPORATE AND HERITAGE LISTED HOMES AND APARTMENTS



NO NEED TO REPLACE YOUR EXISTING WINDOWS TO ACHIEVE DOUBLE GLAZING

Stop Noise will come to your home for a FREE demonstration and show you how we can reduce noise by up to 70% coming through your existing windows.

Stop Noise secondary glazing system is equally as good as replacement double glazed windows for your thermal insulation and twice as good for reducing noise. There is simply no better option. Save money on your energy bills and get a great night sleep.

Stop Noise is a trusted family owned and operated Melbourne based business since 1995.

VISIT US ONLINE! [WWW.STOPNOISE.COM.AU](http://WWW.STOPNOISE.COM.AU)

Call today to organise a free assessment of your windows & doors

1800 880 844

[info@stopnoise.com.au](mailto:info@stopnoise.com.au)



Office & Showroom- 15 Industry Blvd, Carrum Downs 3201





## Montague Community Alliance

# Hello ... Hi ... Hi ... Over here ... What about us? YES, US!

If you wandered around our lovely Montague Precinct over the last couple of months you would wonder where the gains of the last years have gone, where our hard work as the Montague Community Alliance has disappeared to.

We really thought we had been listened to, but NO ... Here are some of the things that have gone backwards for our Montague Precinct:

**Rubbish:** We are being used as a tip again. Discarded washing machines, household goods and there are more cigarette butts than ever before. There are no areas for smokers around their own offices so they use the streets, our small garden areas and the park as ashtrays. And we locals pick up the butts ... Plastic bottles, discarded coffee cups and food containers from the local cafes all over the streets, or the residents' rubbish bins. The businesses from whence these workers emerge, seem to find it easier to access others' bins or the street bins than their own.

**Development sites:** Have you walked up Buckhurst St on the way to the South Melbourne Primary School recently? Next to the Carlins demolition site there are piles and piles of rubbish. The rough sleepers on the Fifteen85 site have moved on, but there is significant rubbish and discarded food, a complete health hazard to the residents and workers of Gladstone St.

**Parks:** Created in the 1800s, Page Reserve is almost dead. We know, that the usage of the park has increased significantly and we are all suffering from lack of rain, but parks in other parts of the municipality are being looked after. What about US?

**The charities:** Montague is home to Father Bob's Foundation and Orange Sky with worthy and remarkable founders, who do amazing work and who I am sure the community supports. However, situating themselves in a growing area for both business and residents, requires these charities to also focus on the community they are based in, as well as the community of their clients. Can they be kinder, more thoughtful to the local community regarding noise, rubbish and the foot traffic they emit? If so, we are sure they would garner even



Greens candidate Steph Hodgins-May

more support.

## There is a looming Federal election

Last month we asked the ALP candidate Josh Burns (my personal favourite) to tell us what he thought of Montague, this month we asked the Liberal and Greens Candidates to tell us their thoughts.

Only the Greens candidate responded, thank you to Steph Hodgins-May.

*Who are you, tell us a little about yourself?*

I'm Steph Hodgins-May, the Greens candidate for Macnamara. I previously worked as a planning and environment lawyer and now run a small business. I live in St Kilda with my partner and our one-year-old, Otis.

I ran in this seat in 2016 when it was called Melbourne Ports and came within 477 votes of winning, I'm running again at this election because we need a strong, local voice to stand up for the issues that matter to our community.

*What brought you to be interested in the Montague Precinct (MP) of South Melbourne?*

As a candidate seeking to represent this community in parliament, I take a strong interest in the issues that affect all residents.

*What do you consider are the best and/or most interesting things about the MP?*

There is incredible opportunity in the Montague Precinct, from its rich history in places like the bluestone laneways to the new developments. With so many new people moving into the area, we have a chance now to shape the area to cater for the growing community.

However, this potential won't be realised unless we take a co-operative approach across all levels of government, local, state and federal and put people at the heart of the planning decisions that are made. This means that we need to end political donations from property developers to ensure that political leaders are responsive to the needs of the community, not their big donors.

*How do you think living or working in Montague affects the quality of life/work, for the current residents and businesses?*

I hear from many residents that they are

feeling the pressure of the high amount of development. I understand that people are frustrating with the lack of planning and co-ordination for the area. Whilst there is an opportunity to create a vibrant and liveable community, this won't be achieved unless the voices of community members are put at the centre of the planning process.

*What would you consider are the challenges of living or working in MP?*

Residents have told me that it is difficult living in an area with so much construction noise and disruption. Not only is the noise and dust from construction frustrating, it is also difficult to build a sense of community during it. As with other high-density areas, there are also challenges with traffic, congestion and transport in the area.

*If you could change something about Montague life, what would it be?*

The Greens are committed to the proper revitalisation of the Fishermans Bend area. We want to ensure that there is sufficient open space and community infrastructure to avoid additional pressure on the Montague Precinct. We have announced Metro 2 to ensure that this area is well connected to the CBD and beyond.

We also have a policy to ban political donations from property developers so that we can put people and community back at the centre of development. One step in the right direction would be to put in place voluntary neighbourhood agreements with developers that include a schedule of works i.e., ban works on Saturdays and ensure mutual respect.



**Trisha Avery**

Trisha Avery is the convener of the Montague Community Alliance.

[trishavery@bpca.com.au](mailto:trishavery@bpca.com.au)





## Happy Mother's Day!

Treat your Mum to something special  
this Mother's Day weekend

Melbourne Star offers half-price flights and free bubbles to Mums this Mother's Day weekend! \*Take your mum sky-high and enjoy wonderful uninterrupted 360-degree views of Melbourne while having some quality time with her.

Book online at [melbournestar.com](http://melbournestar.com)

\*Terms and Conditions apply.



MELBOURNE STAR  
OBSERVATION WHEEL

Safety & Security

# Winter vehicle and driving safety

The leaves are changing colour and falling from the trees, the beanies and puffers have started to appear and in no time we will be getting some much needed rain (hopefully). Winter is coming!

What does this mean for winter driving? The harsh winter months can add an element of risk to your road trip. Winter weather and road conditions make it especially important to be a safe and conscientious driver to ensure you make it to your destination in one piece. Here are some important safety tips:

**Tyres** – These are the most active safety equipment of your vehicle – it is kept on the road by the four tyre contact areas that are not much bigger than the size of your palm. Ensure they have sufficient tread (no less than 1.5 mm), check tyre pressure (check at least once a month) and check the condition of your tyres by looking for any lumps, bulges or cracks. Some vehicle manufacturers recommend that tyres be replaced every six years regardless of use as they deteriorate over time.

**Headlights** – Winter brings with it low light conditions. No matter the time of day or driving conditions headlights can be crucial to driving safely and being seen by other road users.

**Battery** – When the temperature drops, so does battery power. Have your battery checked for sufficient voltage, amperage and reserve capacity. Replace if necessary.

**Braking distance** – It takes much longer to stop in the wet, so don't follow other cars too closely when it's raining or if the roads are wet. Increase the gap between you and the car in front to at least four seconds.

**Delay your travel** – Do you really need to take that trip in your car right now while it is raining cats and dogs? Postpone travel until storm fronts have passed through.

**Remember** – You are your car's best safety feature. Take precautions to ensure you arrive safely at your destination this winter. When the chilly temperatures of winter set in, will your vehicle be ready for the cold?



**Senior Sgt Alex O'Toole**

Station Commander at Southbank Police Station  
alex.otoole@police.vic.gov.au

Port Places

# The first quarter 2019

State of play in Fishermans Bend.



## Montague

For the first time since observing Montague on *Port Places*, businesses are moving in to the area, rather than out. Telleish Hair Studio, (followed by 25.4k people on Instagram), has created an elegant two-level salon in the long untenanted ground levels of the Gravity Tower in Gladstone St.

Construction has begun on three development sites in Thistlethwaite St: South, Lilix and Lurada's six-level office building.

Demolition of the buildings on the huge former Carlins site opposite Kirrip Park is underway.

The corner shop that used to loan lawn mowers now sells vertical gardens.

The City of Port Phillip has completed streetscape works to narrow Douglas St to reduce the volume and speed of traffic around the South Melbourne Primary School and to further improve access from the City Rd tram stop.



161 Buckhurst St, possibly the last double-fronted house remaining in Montague, was demolished in April.

## Sandridge

The Port Melbourne Football Club returned to North Port Oval on Easter Saturday after a comprehensive \$2 million reconstruction of the ground. The very warm day brought out umbrellas for the sun rather than the rain. The day was made even more pleasing by Port's convincing win over the Box Hill Hawks. A jumping castle and face painting signalled moves towards a more family-friendly club.

Delta Demolitions for Salvo Property Group has begun clearing the very large site at 60-82 Johnson St of the brick warehouse and other buildings. The site has a planning approval dating from 2015 for four towers with over 1000 apartments.

Around the corner, Half Acre, the recently-opened hospitality venue at 112 Munro St, is making people feel at home. Co-owner



Adam Wright-Smith said: "It's for everyone to do anything, any time. When the doors open, I am really saying 'come into my home.' I want people to feel comfortable, I want them to feel like we are friends and they are here for a catch-up." (source: Habitus Living)

Nearby in Ingles St, MUSK architecture's The Soap Factory is emerging as an antidote to the relentless townhouses at 164 Ingles St.

Across Woodruff St, the site at 222 Ingles St is for sale by expressions of interest, which closed on May 2. This sale is widely expected to provide an insight into the state of the market in Fishermans Bend at this point of 2019.



## Wirraway

Third Street's P.M. development on Prohasky/Plummer St emerges from every angle. The development, for which a permit was granted in 2016, will contain 536 apartments over three towers and eleven townhouses.

Rootes deteriorates to that advanced point where demolition by neglect becomes a valid charge.

The Timber Yard on Plummer St, offering a huge and flexible hospitality space, is in full swing.



In Rocklea Drive, Cirrus Coffee with Australian Ecosystems and Biofila have created a unique and compact urban farm on two car parking spaces which has produced an astounding 265 kgs of fresh produce since November 2018, or 132.5 kg per car space in less than six months!

Brendan Condon and colleagues harvest produce from the wicking beds

The service station on the corner of Salmon and Williamstown Road has been demolished subtracting a building that contributed to the story of the car industry centred around Salmon St.

Well, that's a wrap for the first quarter.



**Janet Bolitho**

Port Places and Fishermans Bend Development Board  
janet.bolitho@gmail.com

## Southbanker

# Bringing our river to life

For 20 years, Tim Bracher has worked tirelessly to activate our lower Yarra River precinct by connecting business and community here in Southbank.

Having started off life as a freelance journalist, Tim forged his career working in public relations and marketing, through which he started his own management consultancy business.

With a strong background in tourism, it was in 1999 when he was approached by the City of Melbourne and what was then Tourism Victoria to kickstart what would ultimately become the Yarra River Business Association (YRBA).

"It started off as such an inconsequential thing," Tim said. "I agreed to take it on with the intention of signing up for 12 months to get the marketing going and then finding someone to take it on from there."

"What I found after six months was that it wasn't just a case of babysitting a new organisation. Some of the issues that were coming up for consideration were quite fascinating to me and they really played well to my background and to my interests - journalism, public relations, marketing, tourism - and so it ticked all the boxes for an interesting longer-term engagement. I kept going for that reason."

What began as a temporary job soon grew into a passion and Tim has now served as executive officer of the YRBA for 20 years. His contribution over that period to helping the precinct transform into one of the most loved parts of Melbourne cannot be understated.

Funded by the City of Melbourne, the YRBA today boasts nearly 200 business members, with the likes of Federation Square, Southgate, Arts Centre Melbourne, Royal Botanic Gardens, South Wharf and the Melbourne Convention and Exhibition Centre (MCEC) among them. Hosting



The Yarra River Business Association's executive officer Tim Bracher.

regular events for its members throughout the year, such as its business luncheons which feature a different guest speaker presenting on issues and topics affecting the precinct, the YRBA is the voice of our business community.

As its network has grown over the years so too has the precinct. By connecting businesses under a common goal, the YRBA has continued to help create a better Southbank for our community and visitors to enjoy under Tim's leadership.

"You don't really notice it every day but when you do stop and look back you realise that it [the precinct] has come an enormous distance and gives me a great sense of satisfaction to think I might have had some part to play in that evolution," Tim said.

"Of course, it's been the work of many, many people from many different departments but I sort of equate myself to a little terrier dog just nipping at the heels for 20 years in the nicest possible ways."

In the early days, he described the precinct as a "very undercooked" tourism offer. Southgate and Crown Casino operated as

tourist nodes and there was very little in between.

Activation of the river itself has always been central to the YRBA's remit, which was made a challenge in the beginning by an "old school" boating industry that saw each other as competitors, according to Tim. Between Parks Victoria, Melbourne Water and state and local government, the multi-layered governance of the river has also tested the YRBA's resolve over the years.

Paying homage to the work of the man considered by many to be the "father of Southbank" in Evan Walker, who served as planning minister in the Cain Labor Government in the 1980s, Tim said it was his work that had made everything possible.

"Evan Walker started it all here," he said. "He had sown the seeds and the private sector was coming in to start filling the gaps. But it took a long time to fill those gaps and there were two challenges initially."

"One was to pull the business community together and to see themselves as a community that could help each other. The other thing was to convince Melburnians

that it was a precinct worth visiting and exploring."

"We've taken this from what was essentially the drain of Melbourne to the showcase. It's taken a lot of lobbying behind the scenes. Even the businesses of Southbank don't really understand how much back-room work goes on to make this precinct what it is today."

Starting from the sports precinct in Jolimont and travelling past the likes of Federation Square, the Arts Precinct, South Wharf and through to Docklands, a walk, cycle or boat ride along the lower Yarra is now one of Melbourne's most celebrated experiences.

With the Yarra forming the centrepiece of just about every major event our city has to offer thanks largely to a strong business community, Tim's efforts have been well and truly vindicated.

And his place in our community goes far beyond just business. Tim works closely with the likes of the Southbank Residents' Association on a range of local issues. He also sits on the Southbank Safety and Security Committee.

While the business landscape has changed significantly over the last 20 years, the YRBA continues to stay relevant. With a constant rotation of new faces on its board bringing fresh ideas for the precinct, Tim said he believed it was well placed for its next 20 years.

"The key to remaining relevant is to have a constant flow of new people onto your board, particularly younger people," he said. "They've carried me along in changing my ideas but also the enthusiasm of them bouncing off each other with their ideas has kept us relevant and will do so for years to come."

"Hopefully we can leave a blueprint of where we need to go bearing in mind that the precinct evolves every day, every month and every year and so you can't lock in things for a decade. Our major mantra over the last few years has been activating this river and that's coming to pass."

## Pet's Corner

# Dogs spreading happiness

By Sakshi Agrawal

Benny, a four-year-old French bulldog, has made the family of Zeren Guleoglu and Max Saunders very happy.

"My dad is very old. He's Turkish and doesn't like animals in the house. But as soon as I got Benny, he lets him sleep on the bed and does everything with him," explained Zeren.

Zeren and her family bought Benny, when he was eight weeks old, from a breeder in Frankston.

Benny has a "squishy face" and is "mushy". He is a smart dog but also stubborn at the same time, Zeren said.

His favourite part of the day was his daily visit to the dog park.

"When we go to the dog park, he is salivating everywhere because he is just that over-excited and happy," Max said.

Zeren loves her dog very much and does not like leaving him alone when she goes to work. Therefore, she switches on a YouTube Channel for dogs.

"It releases soft music in the background and has a field of cows everywhere. It's anti-anxiety for dogs and it will go on playing for hours. It's a 12-hour video so there is always noise in the house then," Zeren said.

Benny has just received a new set of cute pyjamas.



Max and Zeren with Benny.

## St Johns Southgate

# The worst thing to lose and the best thing to have

“To spare oneself from grief at all costs can be achieved only at the price of total detachment, which excludes the ability to experience happiness” – Erich Fromm, German-American psychologist and philosopher.

The other day, as I was trying to pluck a topic for this column out of thin air, I found myself reading the words above, penned by Erich Fromm, at the exact moment that *I Am a Rock* by Simon and Garfunkel started playing on my stereo.

It's a song that describes, somewhat ironically, the detachment that Fromm was writing about, with lyrics like, “Hiding in my room, safe within my womb, I touch no one and no one touches me. I am a rock. I am an island. And a rock feels no pain. And an island never cries.”

As Paul Simon suggests, someone completely detached might feel no pain, but

as Fromm argues, neither can they know happiness.

I wasn't planning to write about grief this month, but seeing as one of the wisest people I know recently said to me, “I don't believe in coincidences,” I thought that the convergence scholarship and the musical art form – along with my own prayers for inspiration – were as good a reason as any for writing (again) about grief.

Yes, it was only in November last year that I wrote about grief, but as I say to my children when they grumble about the dinner served up to them, “You get what you get and you don't get upset,” I, with great warmth, say that to you, my dear readers.

Speaking of my children, it was in late March that our fourth child, Hugo was born, and about a week later, his five-year-old brother, Theodore, in the midst of the emotional rollercoaster that is the expansion of a family, spoke something of the truth that the cost of love – of attachment – is grief.

I was sitting down, holding baby Hugo, and Theodore walked in and started stroking Hugo on the head as he gazed into his eyes.

Without looking up from Hugo, Theodore said, “The worst thing to lose is love and

family, isn't it?” To which I quietly replied, “Yes.”

Theodore then looked up at me, smiled, and said, “But the best thing to have is love and family!” I pulled him close with my free arm, gave him a big hug and a kiss, and again, said, “Yes.”

Having family, or loved ones of some description, can be a great source of joy and happiness. But it does cost us grief. Grief is love's price, but it's a price worth paying. And I believe opening ourselves to love in spite of its expensive price is made easier when we view it with the bigger picture of God's love in the periphery.

We're presently in the joyous Easter season of the Christian calendar. It's a season during which we're invited to revel in the revelations of the resurrection. One such revelation is given when Mary Magdalene recognises the risen Jesus as he addresses her by name.

He then says to her, “Do not hold on to me, for I have not yet ascended to the father. Go instead to my brothers and tell them, I am ascending to my father and your father, to my God and your God.”

Mary couldn't hold on to the lord and

saviour she adored, she would lose him again, in that earthly sense, and have to grieve. But through that grief a new kind of love and family would materialise. She would be received into an eternal family – be made a daughter of the eternal God who is the very essence of love itself!

It can be the same for all of us too. We will experience grief. It is the price of love. But in the faith communities of the Christian church, we believe that because of the ultimate attachment that God seeks to have with us, we need not fear the cost of attachment in this life. We can and should love boldly, without fear, knowing that finally, every tear shed from lost love will be wiped from our eyes in heaven.



**Tom Hoffmann**

Tom Hoffmann is the pastor at St Johns Southgate Church.

[www.stjohnssouthgate.com.au](http://www.stjohnssouthgate.com.au)



## Southbank Residents Association

# An election is upon us!

Our recent meet the candidates event to meet our local candidates for the upcoming federal election was an overwhelming success.

We had candidates from the three major parties, Liberal, Labor and Greens. The event was packed with about 100 people with a current reach of over 1000 on our live Facebook stream.

But who would have picked that the first question from the audience would have been about parties positions regarding Julian Assange – it certainly took me by surprise.

There were some really good questions covering a broad range of issues, many of which would have an impact on our suburb

and our liveability.

The candidates were well prepared and answered all questions respectfully and directly. We would like to extend a very special thank you to the moderator, Bernadene Voss, three-times City of Port Philip mayor and resident of the electorate for 20 years.

Bernadene certainly knows the issues of the electorate and kept the candidates focused on the questions. It will be a very close contest, between three new candidates, so don't forget to vote, as our seat is marginal and could easily go to any of the three major parties.

If you missed the event, and keen to know where all the candidates stand, then you can still see the whole event on our Southbank Residents' Association Facebook page. If you don't already follow us there, then you may find our page useful.

On another note, I am becoming really

concerned with the delays to Stage 1 of Southbank Boulevard. I don't know if you have noticed, but machinery is sitting idle on the site and rarely are workers seen around the area.

It seems from the latest City of Melbourne update that this development is several months behind schedule. Delays no doubt come at a cost, especially when machinery is sitting idle. I wonder how much this delay is costing the city and where the money will be coming from. I will try to get some further answers to this.

The end of financial year is quickly approaching, therefore so is our annual general meeting. It is at that time where we appoint a new committee.

May 20-26 is National Volunteer Week and our committee members are all volunteers.

On behalf of our community I wish to say a big thank you to our committee of volunteers who keeps our association active

and relevant, and to also extend that to the wider community of volunteers who all do a tremendous job.

If you would like to be active in your Southbank community and also volunteer to assist our organisation, I encourage you to reach out and see if we can provide what you are looking for. If you are interested please send me an email to [president@southbankresidents.org.au](mailto:president@southbankresidents.org.au), we would love to hear from you.

Happy voting!



**Tony Penna**

Tony Penna is the president of Southbank Residents' Association.

[southbankresidents.org.au](http://southbankresidents.org.au)



**St Johns**  
Southgate

Every Sunday

9am Traditional worship with communion  
10:30am Sunday School during school terms  
11am Informal worship with communion  
6pm Sunday Night at St Johns  
Informal contemporary worship  
hosted by Lutheran Students and Friends  
The chapel is open daily  
for private prayer and reflection

Thursday 30 May

7:30pm Ascension Day Vespers  
with Bach's Missa Brevis  
The Kyrie and Gloria of the B Minor Mass  
for 5 soloists, chorus, strings, 2 oboes,  
2 flutes, 2 bassoons, horn, 3 trumpets,  
timpani and continuo  
St Johns Bach Choir and Orchestra  
directed by Graham Lieschke  
7pm Cantata in Context: pre-service talk

20 City Road Southbank Telephone 9682 4995 [www.stjohnssouthgate.com.au](http://www.stjohnssouthgate.com.au)

Metro Tunnel



# Anzac Station roof construction underway

The Metro Tunnel's Anzac Station is fast taking shape with construction now underway on the station roof.

On the northern part of the construction site on St Kilda Rd, Australian-made steel reinforcement is being laid, followed by concrete, forming the station roof.

As the station is being constructed from the top down, the station walls are built first through a series of diaphragm walls – constructed up to a depth of 23 metres – followed by the station roof.

Once the roof is built, excavation continues underneath through a void in the roof slab, minimising noise and dust during construction. From mid-year, an acoustic shed will be built over this part of the site to support the launch of the tunnel boring machines at the end of the year.

On the southern end of the work site on St Kilda Rd, piling and diaphragm wall construction continues.

For more information on Anzac Station works visit [www.metrotunnel.vic.gov.au](http://www.metrotunnel.vic.gov.au)



## April construction blitz finished

Trains have returned to the Cranbourne, Pakenham and Frankston lines following the successful conclusion of the Metro Tunnel Project's 19-day construction blitz at South Yarra.

This was a significant period of high intensity, 24/7 works, with the project team returning the lines in time for the first service of the day on Wednesday, April 24 after completing key works within the rail corridor.

- Demolition of the William St bridge and completion of the first stage of the roof slab for the eastern tunnel entrance headlined the April blitz. The project team also:
- Removed 13,000 cubic metres of soil and rock;
- Poured more than 2200 cubic metres of shotcrete;
- Installed 88 concrete piles to provide structural support for the future realignment of the tracks and construction of the eastern tunnel entrance;
- Poured 400 cubic metres of concrete to construct the roof slab for the eastern tunnel entrance decline structure;
- Removed and reinstated 800 metres of rail line and overhead structures; and
- Installed 3500 metres of overhead wires.

The Metro Tunnel Project would like to thank public transport users and the broader community for their understanding and patience as the team completed these major eastern tunnel entrance works.

For more information about the project, please visit [metrotunnel.vic.gov.au](http://metrotunnel.vic.gov.au), call **1800 105 105** or call the Interpreter Line on **9280 0700**.

History

# Pubs in Southbank

Looking for a pub in Southbank? It's certainly not as easy as it once was.

The area was once populated with pubs like the Castlemaine and Wayside Inn in City Rd, the Queensbridge in Queensbridge St, the Royal Domain in St Kilda Rd (which became the Casa Manana, nicknamed the Case of Bananas), and the Main Point on the corner of Moray St and City Rd, opposite the Trades Hotel.

Most have been decommissioned and replaced as part of the transformation of Southbank. Some have been demolished for road extensions (such as the Castlemaine, part of the Castlemaine brewing complex and demolished in 1958). Nearby the Queensbridge Hotel awaits its fate as key part of the proposed extension of the Crown Casino. Numerous pubs continue to operate in South Melbourne, with the Maori Chief probably nearest to Southbank.

The most prominent former pub is the Main Point in Moray St. Built in 1869 of wood, plaster, and comprising four rooms, it was rebuilt with bricks in 1903. You can still see the date on the corner face of the building, beneath the most distinctive feature of the neo-Italian Renaissance design, the octagonal corner tower and metal-sheeted dome.

It was de-licensed in 1926, after which it was used as business premises – but it is still mostly intact and now the site of a costume business.

Like other Southbank pubs, it had a rich history. These pubs were generally beer barns for blokes – women could have a drink but not in the public bar – they were restricted to the Ladies Lounge.

The history of the Main Point (and other Southbank pubs) is full of tales of alcohol-fuelled violence, brawls (particularly after closing time), robberies, shootings, and with frequent charges laid against publicans for trading outside hours. The bars were full of beer and cigarette fumes, and cleaners can recall using garden rakes to gather up cigarette butts, and there were usually SP bookies operating in lanes next to the pubs.

Up until 1966, when trading hours were extended to 10 pm, pubs all across



Former pub Main Point in Moray St.

Melbourne closed at 6.00 pm, leading to the undignified hour between 5.00 and 6.00 (known as the Six O'Clock Swill), when thirsty drinkers tried to consume as much beer as possible.

Getting drunk was a sprint, not a marathon. The long-overdue change to hours was welcomed by most and also resulted in changes to layouts of pubs to cater for a different clientele, including lovers of live music.

Many pubs became family environments and are remembered fondly by South families.



**Robin Grow**

President - Australian Art Deco and Modernism Society  
[robingrow@ozemail.com.au](mailto:robingrow@ozemail.com.au)

# Open for business

## Beer DeLuxe: Federation Square

Throughout construction of the new Town Hall Station, Beer DeLuxe will remain open and accessible. There's always something happening at Beer DeLuxe Fed Square. Whether it's a major cultural or sporting event, or a special gathering in the Square itself, Beer DeLuxe always has something special on offer.

For more information visit [metrotunnel.vic.gov.au](http://metrotunnel.vic.gov.au) or call **1800 105 105**.

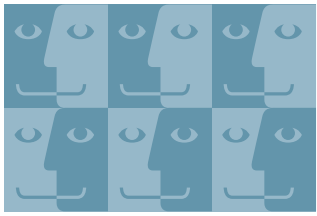


**★ Beer DeLuxe**



More trains,  
more often





# FACES OF SOUTHBANK



OLIVER BROCK, 24, ADVERTISING

I think it's great. It's going to take a bit of time to get up and running but when we get there it will be good and convenient.



LEX MANUEL, 29, BOARDROOM ATTENDANT

It is probably a good thing because I have lost my Myki twice after I had just loaded it with \$30 or \$40. I am a student and I work casually so that's a lot of money for me. I have a really mixed feeling because I see some strong positive but some really scary negatives. Ultimately it's a good thing but I feel I need more security around these electronic things.



JESSE YOUNG, 27, ADVERTISING

I really like it actually. I haven't used it yet because I have an Apple phone. I think it will be good for everything eventually once everyone knows about it.



SHANI KALASAK, 27, EDUCATION

I think it's better even for tourists because the Myki costs money. You can't use the public transport if you don't have a Myki.



ADI BLUM, 32, ENTREPRENEUR

I think it's a great idea. It was a bit hard to find your way with Myki. I thought I could buy it at tram stations or train stations. But we can buy it only in a few of them. So, this [mobile Myki] will be more accessible.



KOHSHIN MIKI, 21

It is very useful. I hope it becomes better in the future.

## Question:

What do you think of the new Mobile Myki?

THE MOST EXCLUSIVE ESCORT AGENCY

# Paramour

OF COLLINS STREET

- Dinner Companions
- Social Escorts
- Sensual Ladies

Follow us on twitter @paramourescort to see x3 free lingerie pics everyday to your feed!

**96546011** CBD - 5 MINUTES TO YOUR DOOR  
 たくさんの美しい女性 日本語を話します

Subscribe to our mailing list via our website and See real pictures of our ladies at paramour.com.au

Call or book at [rsvp@paramour.com.au](mailto:rsvp@paramour.com.au)  
 MELBOURNE CBD

SWA113E

## SOUTHBANK SUDOKU

Last month's Sudoku solution

|   |   |   |   |   |   |   |   |   |
|---|---|---|---|---|---|---|---|---|
| S | O | K | N | B | H | U | A | T |
| U | H | N | K | A | T | S | O | B |
| T | B | A | U | S | O | K | N | H |
| H | S | O | T | K | A | N | B | U |
| A | K | B | S | U | N | T | H | O |
| N | U | T | H | O | B | A | K | S |
| O | N | U | A | H | S | B | T | K |
| B | T | S | O | N | K | H | U | A |
| K | A | H | B | T | U | O | S | N |

A variation of Sudoku, with the letters SOUTHBANK replacing the numbers.

The rules are the same as regular Sudoku, each line of the must contain the letters 'SOUTHBANK' as must each 9-square box. This Sudoku is HARD! Good Luck!

|   |   |   |   |  |   |   |   |   |
|---|---|---|---|--|---|---|---|---|
| N |   | T |   |  | U |   | S |   |
|   |   |   |   |  | T |   | A |   |
|   |   |   |   |  |   | K |   |   |
| H | O |   |   |  | A |   | K |   |
|   |   | N | K |  | B | S |   |   |
|   | U |   | O |  |   |   | H | T |
|   |   | A |   |  |   |   |   |   |
|   | T |   | U |  |   |   |   |   |
|   | H |   | B |  |   | O |   | A |

## Southbank Sustainability Group

# Positive changes in our neighbourhood

With the Southbank community vegie and herb garden finding its permanent home at Boyd's front yard, our group has been busy caring for our new seedlings, expanding the garden, planning the upcoming orchard and community composting area and getting results through some important sustainability activism.

With the invaluable help and support of the City of Melbourne to establish the new garden, including bringing us Biofilta – the company that provided the wicking garden beds, soil, and seedlings – our group members and other Southbankers interested in learning how to garden, got their hands dirty and planted away most of last month!

Shortly after the initial planting day on April 6, the council gave us the lemon trees and a triangular garden bed/sitting area to plant 65-70 additional seedlings.

It was amazing to see such a positive reception and an avid interest in the new garden, and in gardening by community members on our meet-ups (and on many days inbetween)!

Their love and care certainly made the seedlings grow beautifully over a short four-week period. If nothing else, this garden highlighted the need of many Southbankers to get back in contact with nature, garden, grow food as well as their desire for more community green spaces.

This was evident by the more than 40 people who showed up on the initial planting day and the ongoing interest of more and more community members wanting to join the group.

Some new members were added in April alone, along with an overwhelming number of positive comments received and constant



photo snapping of our neighborhood's new gem.

Seeing so many passionate Southbankers contributing endlessly to the creation, wellbeing and growth of our vegie and herb patch and our community's expressed appreciation certainly motivates our hard-working, volunteer-members to continue their amazing work.

Without these members, this wonderful area would not have become a permanent addition to our neighborhood – not to mention the amount of positive change they are bringing about in a wide range of sustainability matters.

This brings us to the positive results our group's quick-to-respond activism helped bring about at mid-April's Future of Melbourne Committee meeting, where our city's Waste and Resource Recovery Strategy



2030 plan was a key agenda item.

The 131-page document was up for endorsement by the council in its existing form and would define Melbourne's position and actions on waste management and reduction for the next 11 years – the most critical time for mitigating climate change, with waste identified as a key contributor.

Following a number of submissions from Southbankers, along with a few more from other inner-suburbs, councillors responded with a proposed amended plan, adding more areas of waste to tackle and requesting higher targets, a more detailed plan and clearer implementation actions. Councilors especially commented on the importance of the submissions made and how the community's comments were taken well into account when forming their amended motion.

There are certainly many areas people can get involved in to make Southbank more sustainable and our volunteers can use the help.

If you're interested in gardening, helping with the watering or the upcoming orchard, community composting, or getting involved with one of the many sustainability issues and education the group tries to tackle for the betterment of our city, you can either message us ([southbanksustainability@gmail.com](mailto:southbanksustainability@gmail.com) or [facebook.com/SouthbankSustainabilityGroup](https://www.facebook.com/SouthbankSustainabilityGroup)) or come join us on an upcoming meet-up (Saturdays May 11, May 25, and June 8, from 10am at Boyd).

## About the group

A solutions-focused community group of Southbank residents working to bring positive change in sustainability practices and education to our neighborhood, while building a wonderful community of like-minded people.



**Artemis Pattichi**

Southbank Sustainability Group  
[southbanksustainability@gmail.com](mailto:southbanksustainability@gmail.com)

## Health & Wellbeing

# Why your partner won't measure up (and why that's ok)

For most of recorded history, people married for logical reasons: because it made sense economically to our families, or because it would help business or trade, or even survival!

We very rarely marry for these reasons anymore, with most of us being much more drawn to the freedom of choosing our own partner and the concepts of romance, falling in love, intuition and "knowing" when someone is "right" for us.

## Romanticism killed relationships

The romanticism movement has been unhelpful to us, as it has set us up to view our partnerships as an endless ride of hedonistic pursuits and when it isn't, we regard it as unexceptional and problem-ridden.

We often, therefore, end up lonely in our

relationships, convinced that our union, with its imperfections, is not the "right" union for us – and we then make efforts to "fix" it, or stay but feel deterred by it, or leave it all together.

We hope that the person we fell in love with, the person we did not know everything about, and that was a particular way when we met or married them will be our everything: will be our lover, our friend, our confidant, our business mentor and our taxi driver.

We expect that they will never change (if they were wonderful to start with) or definitely change (if that is what you deem is required), we hope that they will measure up to our expectations of them and the union, and when they don't, we are bitterly disappointed.

What we should instead do is adopt a more forgiving, humorous and kind perspective, knowing that our partner will never measure up, and that that's ok.

## Why your partner won't measure up

We all put our best foot forward when we

date.

When we are dating, we are looking for similarities with future mates, we are seeking to be liked, to like, and to not show "too much" of our true selves for fear of disapproval.

Although it is fundamentally human to do this, I would urge all of you (dating or in a relationship) to show as much of your "crazy" as possible. This can be difficult, and vulnerability inducing, but it will save you much time and heartache in the long run.

We rarely delve into our complexities before we settle down with someone.

Whenever relationships threaten to reveal our flaws, we often feel threatened, insecure and fearful and resort to either hiding them or running away.

Become comfortable with your insecurities, your past, who you are and aren't.

It might be helpful to speak with a psychologist and work through this stuff before you get into a relationship so that you don't feel the need to "mask" who you are when you are.

This also helps when looking for a partner, as you will be looking for another "whole" person, and not someone to "fix you/fulfil you/be your everything".

Think about expectations versus reality – specifically, that a perfect being exists who can meet all our needs and satisfy your every yearning.

This is something I hear too often, and sets couples up for disaster. Your relationship is an addition to a beautiful life, filled with friends, hobbies, family, work and all of the wonders that we call living.

Putting pressure on your partner to fulfil you in every sense is not fair on you or them.

Do you have a question or comment for Rajna? Please send her an email on: [bogdanovicrajna@gmail.com](mailto:bogdanovicrajna@gmail.com)



**Rajna Bogdanovic**

Clinical psychologist  
[rajna@southbanklocalnews.com.au](mailto:rajna@southbanklocalnews.com.au)

We Live Here

# More support for Owners' Corporations in the new Bill

The long-awaited exposure draft of the Owners Corporations and Other Acts Amendments Bill has now been released by Consumer Affairs Victoria (CAV) for public consultation.

The exposure draft can be accessed at [www.consumer.vic.gov.au/OCBill](http://www.consumer.vic.gov.au/OCBill)  
Submissions emailed to [cav.consultations@justice.vic.gov.au](mailto:cav.consultations@justice.vic.gov.au) will be accepted until May 10, 2019.

Subject to the satisfactory resolution of any issues raised during the consultation process, the Bill should be introduced into Parliament later this year.

It has taken more than three years since submissions to the Issues Paper closed in 2016 and at first glance the proposed new Bill does seem to give more support for owners' corporations than previously, indicating that our voice is at last being heard.

The introduction to the Explanatory Memorandum states: The proposals that have emerged from the review seek to make buildings governed by owners' corporations better governed and more liveable taking into account stakeholders' experiences and industry developments since the Owners Corporation Act 2006 commenced in December 2007.

The amendments seek to:

- Rationalise the regulation of owners' corporations;
- Enhance protection for owners' corporations by improving the quality of owners' corporation managers and expanding and improving developers' duties to the owners' corporations they create; and
- Improve the governance and financial administration of, and internal relations in, owners' corporations.

## Some significant features of the proposed new legislation

Four tiers of owners' corporations to replace "one size fits all".

The current legislation fails to distinguish between 50-storey skyscrapers and suburban blocks with two units.

The new legislation will allow for different regulatory requirements based on the number of occupiable lots.

This is a huge step forward and one that "We Live Here" has campaigned for since the review of the legislation commenced in 2016.

The four tiers are:

| Tier              | Composition  |
|-------------------|--|
| <b>Tier one</b>   | 51 or more occupiable lots, and not a services only owners' corporation    |
| <b>Tier two</b>   | 10 to 50 occupiable lots, and not a services only owners' corporation      |
| <b>Tier three</b> | Three to nine occupiable lots, and not a services only owners' corporation |
| <b>Tier four</b>  | A two-lot subdivision or a services only owners' corporation               |

Limiting the powers of developers and owners' corporation managers to determine how buildings operate to enhance protection for owners' corporations.

**2(a)** In relation to developers the new legislation provides for the expiry of any contract appointing a third party manager (a person who is neither an initial owner or a lot owner) entered into by the applicant for registration of the plan of subdivision at the first meeting of the owners' corporation.

Provision is also made that any other contract entered into that relates to the owners' corporation and benefits the applicant for registration must not exceed three years in duration.

Further it will be a provision of the new legislation for the minutes of the first meeting be kept.

**2(b)** For owners' corporation managers the current registration system will be strengthened to improve the quality of owners' corporation managers.

Other proposals relate to additional obligations placed on owners' corporation managers regarding procurement of goods and services on behalf of owners' corporations (including disclosure of any beneficial relationship with a supplier, commissions, payments and other benefits received), influencing voting on owners' corporation matters and owners' corporations' access to their financial records.

One long-overdue reform is the insertion of a new section in the Act that relates to the appointment of an owners' corporation manager, prohibits certain terms in owners' corporation management contracts and gives more power to the Victorian Civil and Administrative Tribunal (VCAT) to rule generally whether other terms in management contracts are unfair.

Terms that will be prohibited in owners' corporation contracts of employment include those that:

- Impose procedural restrictions on the revocation of the manager's appointment;
- Enable the manager to renew the contract of appointment at their option;
- Provide for the automatic renewal of the contract of appointment if the owners' corporation fails to give notice of its intention not to renew the contract, and
- Must not restrict the ability of an owners' corporation to refuse consent to the assignment of the contract of appointment to a person appointed as the manager, other than one which provides that such consent must not be unreasonably withheld.

We Live Here has previously expressed concern that the government has been consulting in private and only with commercial groups – businesses that make money from buildings that are governed by owners corporations, and not the owners' corporations themselves.

However, it seems submissions and campaigning by us and others have not been in vain, and we welcome the proposals that are aimed at creating a clear distinction between the role of owners' corporations and the role of owners' corporation managers in buildings that are governed by owners' corporations.

Future columns will review more of the Bill – the good and the not-so-good proposals.

We encourage as many of you as possible to review the Exposure Draft and provide us with your feedback.

## Campaign donations

As a not-for-profit organisation, donations from individuals and buildings keep our campaigns going. To register as a supporter of We Live Here or to make a donation please visit our website at [welfarehere.net](http://welfarehere.net)

We Live Here does not accept donations from commercial tourism interests.



[www.welfarehere.net](http://www.welfarehere.net)  
emails to [campaign@welfarehere.net](mailto:campaign@welfarehere.net)

SWA113E

*Top Class*  
of Collins Street

Follow us on twitter  
[@paramouresort](https://twitter.com/paramouresort)  
for FREE lingerie pics  
everyday to your feed!

Open 24/7  
Sexy and Wild  
Genuine Escorts

たくさんの美しい女性  
日本語を話します

[www.topclassofcollinsstreet.com.au](http://www.topclassofcollinsstreet.com.au)  
(03) 96546351  
View lingerie pics of our REAL ladies  
[paramour.com.au/escorts/melbourne\\_escorts/gallery.html](http://paramour.com.au/escorts/melbourne_escorts/gallery.html)



## Owners' Corporation Law

# Bill fails to protect residents

New "draft" owners' corporation (OC) legislation still protects builders and developers, shuts out owners

On its website, Consumer Affairs Victoria has released a copy of the proposed amendments to be made to the Owners Corporation Act 2006.

The "draft" legislation is available for comment from stakeholders until May 10. The state government proposes to introduce the new legislation later this year.

Of particular note is the proposed reform to allow an owners' corporation to file legal proceedings if an ordinary resolution (50.1 per cent of lot entitlements) is passed at a special general meeting or at the AGM.

Under the current legislation, a special resolution (75 per cent of lot entitlements) is required. It has proven to be virtually impossible under the current legislation for a medium- to large-sized OC (above 50 lots) to be able to pass such a special resolution in the current legislative environment, owing to a combination of developer / builder proxies and absent and overseas Asian investor owners.

Even an interim special resolution (where over 50 per cent, but less than 75 per cent of lot entitlements vote in favour of the motion) has proven impossible to procure due to overseas investors and language barriers.

I have acted for many large residential

towers in the metropolitan Melbourne area that are riddled with multi-million dollar building defect issues, but were unable to file a claim against the builder or developer because they were unable to garner the special resolution support.

Many stakeholders spoke out during the Consumer Affairs consultation process to bring forward their case studies about this breach of natural justice. And seemingly, Consumer Affairs listened to the feedback.

I was heartened initially when I read the press release to see that the new "draft" legislation sought to reform this important area of the law.

However, when you dig a little deeper into the detail, the truth of the matter is exposed. In fact, the reform to lower the barrier from a special resolution to an ordinary resolution is only activated if the subject matter in dispute is "within the civil jurisdictional limit of the Magistrates Court." This limit is currently described as any matter worth less than the sum of \$100,000.

So, if an OC sought to terminate an OC manager's contract, or a caretaker's contract, and if those agreements had remaining value (including insurance commissions) in excess of \$100,000, then it is back to square one of

requiring a special resolution.

Indeed, if an OC had a report detailing building defect issues on the common property, then most likely a special resolution is still required.

This keeping of the status quo only suits the tier one developers and builders, and the strata management and facilities management sectors.

It appears that, once again, Consumer Affairs has tipped its hat to the top end of town, leaving OCs disadvantaged and with a serious barrier to justice to try to overcome.

This is especially true in light of the combustible cladding crisis that is currently gripping Victoria, and where hundreds of towers around Melbourne are finding they have had the incorrect cladding installed on their facades. This proposed keeping of the status quo serves only to further protect the building surveyors, engineers, architects and indeed the government bodies that might otherwise be answerable to such claims.

It is worth noting this is not the case in other states and territories. For example, in NSW, only an ordinary resolution is required to commence such legal proceedings, and only then, the voting percentage is made up of those who actually attend the meeting

(i.e., if the motion is passed by over 50 per cent of those lot owners that actually turn up to the meeting or send a proxy, then the motion is carried).

Consumer Affairs had an opportunity to bring Victoria into conformity with NSW on this hot topic. Instead, it botched it.

Perhaps the interests of builders and developers in getting away with constructing defective buildings mattered more to the government than allowing its citizens to have their day in court.

Tsk tsk. It appears the government is still clueless about the strata sector, it seems only to care about how quickly and how high the towers can be built. Beyond that, they haven't really thought about it at all.



**Tom Bacon**

Tom Bacon is the principal lawyer of Strata Title Lawyers.

[Tom@stratatitlelawyers.com.au](mailto:Tom@stratatitlelawyers.com.au)

## SKYPAD Living

# Vertical village parcel delivery

Mail types and volume have changed but how are our mailrooms coping?

Recent years have seen a rapid decline in the number of letters delivered to our vertical villages, while the amount of sent parcels has soared. This change is inline with the national shift towards parcel delivery as Australians continue their love affair with online purchasing.

This change may be most evident in our traditional deliverer of letters, Australia Post, where since 2008 (when Australian letter volumes reached an all-time high), the number of letters it delivers has declined by more than 50 per cent.

However, it is not a case of doom and gloom as Australia Post has reoriented its business to focus on Australian's preference for online channels and home delivery.

Indeed, according to the Parcel Shipping Index, parcel volume in Australia grew 8 per cent last year to 841 million parcels. And our parcel market is expected to grow to more than 1 billion parcels a year by 2021.

But just what is being delivered to our vertical villages?

One visually notable category is the home meals kits, which arrive in their white styrofoam boxes and wait for their owners on the floor of our mailrooms.

But we are told that there are actually increases in several categories of parcel delivery:

- Business-to-consumer: This is the main category and includes such popular items as online ordered clothes;
- Business-to-business: This is a growing category with many small businesses operating from their apartment home;
- Consumer-to-business: In terms of our apartments, this category includes the many "returns" which wait in our mailrooms for courier pickup; and
- Consumer-to-consumer: Such as when we send a parcel, such as a gift.

And accompanying this rise in the volume and variety of parcels, are the expectations of customers for timely receipt. Retailers now say that two out of three shoppers expect to place an order at 5.00 pm for next-day delivery and three out of five believe orders placed by noon should be delivered the same day.

However, there are several issues arriving with our parcels – and mailrooms strewn with parcels too large to fit into standard letterboxes may well be the least of our challenges.

So says Shay McQuade from My Parcel Locker, an Australian-owned business specialising in intelligent mail systems.

Shay sees the emergence of the parcel delivery sector as a genuinely interesting space but one where the broad impacts are,

as yet, largely unappreciated.

For instance, there are customer issues such as failed or redirected deliveries, which are particularly annoying for apartment residents who do not have concierge services to sign and receive. This means that we will either have to stay at home to await delivery or collect our parcel after hours from a secure drop-off point. Not really the purpose of parcel home delivery!

However, a more critical and wider felt issue emanating from these increased, repeated and often failed deliveries is the growth in traffic congestion, which is exacerbated by these deliveries being made predominantly (and repeatedly) during business hours.

While bicycle couriers may not take up too much space, an army of delivery trucks (seeking spots to unload and hand deliver parcels) will certainly impact upon the traffic flow surrounding our apartment blocks.

Another issue raised by Shay involves security and theft – both of our goods and our identity. This is a concern shared by the Australian Federal Police whose first piece of advice on protecting yourself is to "secure your mail".

### What to do?

Once again, this is a multi-faceted challenge requiring the involvement of our transport and traffic regulators and well as our more innovative minds.

Some of the more creative solutions involve drone drop-offs or robot deliveries – though both of these options bring their own raft of issues.

Other options include greater use of "click and collect" where the customer orders online but collects from the outlet, but this assumes a local physical store.

And then there is another trend which is being adopted by many new apartment builds – the smart locker solution. This is where an array of secure lockers are designed and installed into our apartment blocks – possibly replacing our mailboxes or as an additional facility in a common area like our car park. These lockers come in various sizes and configurations and can include "refrigerated and frozen lockers" – catering for those home meal kits!

Utilising a system of pre-approved authorisations, it allows deliveries to be made out-of-hours to secure but accessible units.

So, here's another item to add to your owners' corporation list for future-proofing!



**Janette Corcoran**

Apartment living expert

<https://www.facebook.com/SkyPadLiving/>

# WHAT'S ON COMMUNITY CALENDAR

JAN | FEB | MAR | APR | **MAY** | JUN | JUL | AUG | SEP | OCT | NOV | DEC |



### INNER MELBOURNE LIFE ACTIVITIES CLUB

Meeting on selected dates and various locations, IMLAC takes in the city's parks, its culture, fabulous eating options as well as festivals, galleries and concerts.

[www.life.org.au/imlac](http://www.life.org.au/imlac) or call Dianne 0425 140 981



**TUESDAYS @ BOYD - \$5 DONATION**

### BOLLYWOOD WORKOUT

Inspired by the high energy music from Indian/Bollywood films these workout sessions are focused on building and developing your dance technique and most importantly, having tonnes of fun!

**TUESDAYS - THURSDAYS & SATURDAYS**  
**CHUNKY MOVE DANCE CLASS**  
Mondays to Thursdays and Saturdays at 111 Sturt St. Chunky Move dance classes are the perfect way to unwind, get fit and improve flexibility and strength.  
[chunkymove.com](http://chunkymove.com)



**TUESDAYS**

### LAUGHTER YOGA @ BOYD

Laughter Yoga is a unique concept that allows you to laugh even when you least feel like it and is ideal for all ages. Sessions are at Boyd Community Hub, Assembly Hall each Tuesday at 6pm.



**FIRST AND THIRD SATURDAY EACH MONTH**

### SUSTAINABILITY GROUP

A growing group of green and sustainability enthusiasts who live in Southbank looking to bring positive change. More info: [facebook.com/SouthbankSustainabilityGroup](https://www.facebook.com/SouthbankSustainabilityGroup)



**FIRST AND THIRD THURSDAY @ BOYD**

### TEAHOUSE TOASTMASTERS

Want to take your public speaking to a higher level or improve your English and make some local connections? Join us on the first and third Thursday every month.

Enquiries: [jvanselow@gmail.com](mailto:jvanselow@gmail.com)

**SATURDAYS @ BOYD**  
**SHEN YOGA**  
Suitable for all levels and includes an appropriate amount of challenges and relaxation to promote strength and flexibility.  
[info@yogawithmelia.com.au](mailto:info@yogawithmelia.com.au)



**MONDAYS 1.30PM TO 3PM @ BOYD**

### MATERNAL & CHILD HEALTH

A free drop-in service available for families that need additional support between appointments. The sessions run in the Maternal and Child Health area at Boyd. No appointments necessary.



**FRIDAYS 7.45AM - 9AM @ BOYD**

### COMMUNITY TAI CHI

WULONG TAI CHI offers you the opportunity to enhance your strength, balance, flexibility and well-being in a friendly, supportive environment. All welcome. [lily@wulongtaichi.com.au](mailto:lily@wulongtaichi.com.au)



**SUNDAYS**

### ARTS CENTRE MARKET

Meet over 80 of Victoria's finest artisans first hand. Discover how these unique artworks are made, chat directly about the products, inspirations and techniques.

[artscentremelbourne.com.au](http://artscentremelbourne.com.au)

**WEDNESDAYS @ BOYD**  
**FREE WALKING GROUP**  
Join local fitness experts JustInTime as they lead a 'not just walking group' for Boyd walkers. The program runs on Wednesdays from 9.30am to 10.30am.



**77 - 83 CITY ROAD, SOUTHBANK**

### ONE ROOF

A community, a home and an entire ecosystem providing everything a female entrepreneur needs to thrive under one roof. Find out what's on: [melbourne.oneroofwomen.com/new-events](http://melbourne.oneroofwomen.com/new-events)



**MAY 16 @ 80A TURNER ST, PORT MELB**  
**FISHERMANS BEND VISIONING**  
Hosted by the Fishermans Bend Business Forum, join decision makers in discussing the vision for a National Employment & Innovation Cluster in Fishermans Bend.  
**Register via eventbrite**

**TUESDAYS**

### SOUTHBANK ROTARY

Rotary Club of Southbank meets weekly for dinner on most Tuesday evenings throughout the year at Federation Square. Visitors are always welcome.

[southbank.org.au](http://southbank.org.au)

**MONDAYS @ BOYD**

### JUSTICE OF THE PEACE

Local Southbank JP Atilla Akguner offers two hour sessions every Monday morning from 11am until 1pm at the Principal's Office at Boyd. To book in a time contact:

[atillaakguner@gmail.com](mailto:atillaakguner@gmail.com)

**FIRST THURSDAY OF EACH MONTH**

### SUNRISE PROBUS CLUB

Over 50, living in Southbank and want to join our vibrant club for activities, events and friendship? Meet at Library at the Dock at 10am. Contact Verna on 0407 065 910. [MSPC.docklands@gmail.com](mailto:MSPC.docklands@gmail.com)

# BUSINESS DIRECTORY

## ATTRACTIONS

Open Daily from 10am  
[eurekaskydeck.com.au](http://eurekaskydeck.com.au)

**eureka skydeck**

## BROTHEL

**Studio 466**

美女如雲

466 City Road  
 South Melbourne

03 9696 4666

OPEN 7 DAYS



## ENTERTAINMENT

MELBOURNE  
 RECITAL  
 CENTRE

TO BOOK: 9699 3333  
[melbournerecital.com.au](http://melbournerecital.com.au)

CNR SOUTHBANK BLVD &  
 STURT ST, SOUTHBANK

#melbrecital

## FUNCTIONS

**St Johns**  
 Southgate

Facilities hire Beautiful venue for  
 weddings and memorial services  
 Concert venue with excellent acoustic  
 and comfortable seating Spacious  
 function room Meeting rooms Kitchen

20 City Road Southbank  
 Telephone 9682 4995  
[www.stjohnssouthgate.com.au](http://www.stjohnssouthgate.com.au)

## GYM

**JUSTINTIME**  
 PERSONAL TRAINING

University degree qualified trainers  
 that come to your apartment gym!

Justin Moran  
 0411 798 934 [justintimept.com](http://justintimept.com)

## HAIR & BEAUTY

**RoopRani**  
 herbal beauty salon  
 HAIR & BEAUTY SPECIALISTS

P5 SOUTHGATE COMPLEX - PH 9686 6504  
[WWW.ROOPRANI.COM.AU](http://WWW.ROOPRANI.COM.AU)

## MARKET



*Explore the Market*

**SOUTH MELBOURNE MARKET**  
 Corner of Coventry & Cecil Streets, South Melbourne

## LIQUOR STORE

**ACT OF WINE**

Honest wine, craft beer, artisan spirits  
 22 Fanning Street SOUTHBANK  
 Open 7 Days  
[www.actofwine.com.au](http://www.actofwine.com.au)

## ORGANIC GROCER

**Broad Bean**  
 ORGANIC GROCER

**EAT. DRINK. SHOP. ORGANIC**

26 Fanning Street, SOUTHBANK

## PHOTOGRAPHY

**PHOTOGRAPHY STUDIES COLLEGE**

MASTERS | DEGREES | DIPLOMAS  
 CERTIFICATES | SHORT COURSES

Find Out More

[PSC.EDU.AU](http://PSC.EDU.AU) + 61 3 9682 3191  
[info@psc.edu.au](mailto:info@psc.edu.au) | 65 City Road, Southbank VIC 3006

## REAL ESTATE

**CityResidential**  
 REAL ESTATE PTY LTD

T: 03 9001 1333

818 Bourke Street,  
 Docklands  
 VIC 3008

SALES Glenn Donnelly m: 0419 998 235  
 LEASING Lina D'Ambrosio m: 0430 929 851

[www.cityresidentialbourkestreet.com.au](http://www.cityresidentialbourkestreet.com.au)

SELLING | LEASING | PROPERTY MANAGEMENT

**FIFTEEN85**  
 SOUTH MELBOURNE

[www.fifteen85.com.au](http://www.fifteen85.com.au)

**LUCAS**

WE KNOW VERTICAL LIVING  
 BETTER THAN ANYONE.  
 THAT'S YOUR ADVANTAGE.

9091 1400 | [lucasre.com.au](http://lucasre.com.au)

**MELBOURNE SQUARE**



TO BOOK AN APPOINTMENT CALL 1300 888 770 OR  
 DISCOVER A TERRACE STORY AT [MELBSQUARE.COM.AU](http://MELBSQUARE.COM.AU)

**RayWhite**

Ray White Southbank  
 111 Clarendon Street, Southbank 3006  
 P: (03) 8102 0200  
[www.raywhitesouthbank.com.au](http://www.raywhitesouthbank.com.au)

**THE EVERMORE**  
 MELBOURNE

Retreat  
 Everyday  
 call 1300 383 766  
 Display suite & apartment available to view, contact us for further information  
[www.theevermore.com.au](http://www.theevermore.com.au)

**Whittles**

Owners Corporation Management Services



For superior owners corporation management services,  
 contact the Docklands dedicated team  
 Whittles, Level 1, 838 Collins Street, Docklands VIC 3008  
 T 03 8632 3300 E [info.docklands@whittles.com.au](mailto:info.docklands@whittles.com.au)

## RENOVATION

**AROM** APARTMENT  
 RENOVATIONS OF  
 MELBOURNE

1300 96 86 07  
[edgar@arom.com.au](mailto:edgar@arom.com.au)  
[www.arom.com.au](http://www.arom.com.au)

## RESTAURANT

**ENA**

Shop M4/9 Mid Level Southgate Complex 28  
 Southgate Ave, Southbank  
 Ph: 9690 6205  
 Menu: [enagreekstreetfood.com.au](http://enagreekstreetfood.com.au)

**DOWNSTAIRS**  
 BISTRO & LOUNGE

215-217 Sturt Street Southbank Victoria

9686 5015  
[WWW.DOWNSTAIRS.NET.AU](http://WWW.DOWNSTAIRS.NET.AU)

## SCHOOLS

[www.haileybury.vic.edu.au](http://www.haileybury.vic.edu.au)

**HAILEYBURY**  
 KEYSBOROUGH BRIGHTON BERWICK CITY BEIJING

## SERVICES

**Stop Noise**  
 ADD ON DOUBLE GLAZING

**NOISE REDUCTION SPECIALISTS**

1800 880 844  
[INFO@STOPNOISE.COM.AU](mailto:INFO@STOPNOISE.COM.AU)  
[WWW.STOPNOISE.COM.AU](http://WWW.STOPNOISE.COM.AU)

## TAXI

**Crown Cabs Taxi Service**  
 Bookings: 1300 12 13 14  
 Download the App for your next Ride!

## EDUCATION

**holmesglen**

To find out more,  
 call 03 9564 2716 or  
 visit [holmesglen.edu.au](http://holmesglen.edu.au)

CRICOS Provider Code: 000126. T.O.I.D: 0416. B2261016 LMDM

## ESCORTS

**Erica Elderly** 96503295

Mature  
 Sophisticated  
 Affectionate  
 Discreet  
 Genuine  
 Affordable Escorts  
[paramour.com.au](http://paramour.com.au)

5 mins to your door!

**(03)9654 6011**

Melbourne's Finest Escorts  
 can be at your door in 5min  
 as we're located in the CBD

**Paramour**

# In Room Auction

## 9 Auctions in 1 night

**Venue:** 111 Clarendon Street, Southbank (our office)

**Time:** May 29th at 6:30pm

For further information please visit our website [raywhitesouthbank.com.au](http://raywhitesouthbank.com.au)

RayWhite

**Ray White Southbank & Port Phillip**

111 Clarendon Street

Southbank, VIC 3006

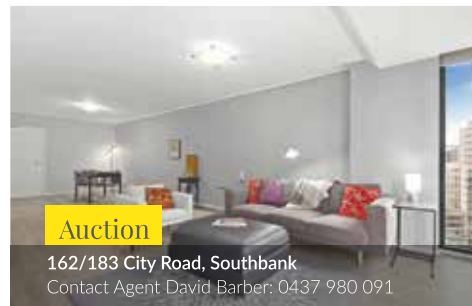
8102 0200

[southbank.vic@raywhite.com](mailto:southbank.vic@raywhite.com)



**Auction**

3803/45 Clarke Street, Southbank  
\$590,000 - \$630,000 David Barber 0437 980 091



**Auction**

162/183 City Road, Southbank  
Contact Agent David Barber: 0437 980 091



**Auction**

805/63 Whiteman Street, Southbank  
Contact Agent Michael Pastrikos 0404 282 864



**Auction**

57/38 Kavanagh Street, Southbank \$390,000 to \$410,000 Michael Pastrikos 0404 282 864



**Auction**

716/108 Flinders Street, Melbourne  
\$670,000 - \$690,000 David Barber 0437 980 091



**Auction**

G36/8 Garfield Street, Richmond  
\$560,000 - \$590,000 Austen Kosasih 0432 750 774



**Auction**

ELG05/11 Flockhart Street, Abbotsford  
\$430,000 - \$450,000 Austen Kosasih 0432 750 774



**Auction**

EG19/11 Flockhart Street, Abbotsford  
\$350,000 - \$380,000 Max Hui 0430 238 021

[raywhitesouthbank.com.au](http://raywhitesouthbank.com.au)

RayWhite



2306/109 Clarendon Street, Southbank

1 🚗 1 🚿

Filled with excellent natural light and boasting fantastic views of the city skyline, this tasteful and modern 1 bedroom apartment is a stunning property for those with a desire to experience contemporary living.

In Room Auction  
May 29th at 6:30pm

Michael Pastrikos  
0404 282 864

[raywhitesouthbank.com.au](http://raywhitesouthbank.com.au)

RayWhite

## The Apartment Collective AUCTION EVENT

This tailored auction event will put your property in front of the right buyers, in a high energy atmosphere created to sell your apartment.

June 20 at 6:30pm  
111 Clarendon Street, Southbank

**Ray White Southbank**  
111 Clarendon Street  
Southbank, VIC 3006  
(03) 8102 0200  
[southbank.vic@raywhite.com](mailto:southbank.vic@raywhite.com)

[raywhitesouthbank.com.au](http://raywhitesouthbank.com.au)