

The voice of Southbank, South Wharf & Montague

# SOUTHBANK Local NEWS

■ **Josh Burns wins Macnamara**

Page 2

■ **Southbank Rotary turns 20**

Page 4



■ **Council budget wrap**

Pages 6 & 7

■ **Meet council's new CEO**

Page 10



## Open for music!

*The University of Melbourne celebrated the official opening of the Ian Potter Southbank Centre on Saturday, June 1.*

As a long-awaited addition to our world-class Arts Precinct, the occasion marked a significant milestone for both the university and for Melbourne, with the \$109 million facility providing the new home for the Melbourne Conservatorium of Music (MCM).

And as if the unveiling wasn't enough, the university also announced on the day that it had struck a new \$1 million partnership with the Australian Chamber Orchestra (ACO), in a move that gives staff and students unparalleled education and research opportunities.

*Continued on page 11.*



*L-R: Minister for Creative Industries Martin Foley, ACO managing director Richard Evans, Bachelor of Music students Jim Millman and Georgie Hannah, University of Melbourne Vice-Chancellor Professor Duncan Maskell and Dean of the Faculty of Fine Arts and Music Professor Barry Conyngham at the opening of The Ian Potter Southbank Centre, June 1.*

# Wrecking ball development plans scrapped

By Meg Hill

*A 2011-approved Southbank development well out of accordance with current planning controls has had its plans revised to save a piece of heritage from demolition and wind back its impact on Boyd Park.*

Since plans for two towers at 63-83 Kings Way and 127-129 Kavanagh Street were originally approved, the land and accompanying plans have been sold, while planning laws have changed and new heritage overlays have been proposed.

The relevant planning amendment, C270, is not retrospective, and the heritage overlay proposed under C305 has not been finalised.

However, the plans, submitted by Run All International Pty Ltd and Hengmao

Australia, have been significantly revised in an effort to bring the project closer into line with the new controls.

The building currently occupying the site corner is the former Austral Otis Engineering Works office building. It is currently under heritage consideration.

Under the previous plans the building was to be demolished to make way for 47- and 38-storey towers.

But a revised \$260 million proposal

incorporates the façade of the double storey building into the design for the base of the towers.

Designed by architects Elenberg Fraser, the towers have been shortened to 38 and 23 storeys and re-oriented to keep the "visual bulk" away from Kavanagh Street and Boyd Park.

This, additionally, eliminates negative wind impacts the previous design would have had on Boyd Park.

The City of Melbourne objected to the original permit issued by then Minister for Planning Matthew Guy on the basis of excessive height and wind impacts.

Speaking on the application at the Future Melbourne Committee meeting on May 21, the City of Melbourne's heritage portfolio chair Rohan Leppert said: "That corner that is being retained is very important in this part of Southbank."

*Continued on page 4.*



# SOUTHBANK RESIDENTIAL

Specialists in Southbank Apartments [www.southbankresidential.com.au](http://www.southbankresidential.com.au) Phone: 964 50 800



# Josh Burns wins Macnamara

*Despite a loss to Federal Labor at the May 18 election, new candidate Josh Burns maintained his party's hold on our local seat of Macnamara.*

**HYPERLOCAL**  
NEWS

Suite 108, 198 Harbour Esplanade  
PO Box 23008 Docklands 8012  
Tel: 8689 7980 Fax: 9602 2929  
www.southbanklocalnews.com.au

Editor: Sean Car

Publisher: Hyperlocal News Pty Ltd  
ABN: 57623558725

Tel: 8689 7980 Fax: 9602 2929  
advertising@southbanklocalnews.com.au

Reader contributions are welcome.  
Please send articles and images to  
news@southbanklocalnews.com.au

Deadline for edition 87 is July 4.

**CONNECT**

Keep up to date with local news & events.



Follow us on Twitter  
@SOUTHBANK\_News



Like us on Facebook  
Southbank Local News



Like us on Instagram  
SouthbankLocalNews

Replacing retiring Labor MP of 21 years in Michael Danby, who recorded a slender victory at the 2016 election, Mr Burns managed to claim a more comfortable win that what many had anticipated on a near five per cent swing.

At the time of publishing the June edition of *Southbank Local News*, the Australian Electoral Commission (AEC) had counted nearly 90 per cent of the vote. As expected, Liberal candidate Kate Ashmor recorded the most primary votes (37 per cent) ahead of Burns (32 per cent) and the Greens Steph Hodgins-May (24 per cent). Following preference flows, Mr Burns had recorded 56 per cent of the vote overall ahead of Ashmor on 44 per cent.

Mr Burns told *Southbank Local News* that despite a hard night overall for his party, he was pleased that the people of Macnamara had endorsed his own positive campaign for a "fairer future."

"To the people of Macnamara who placed their trust in me - thank you. This has been a long journey and I am extremely grateful for your support," he said.

"But the credit for our win does not belong to me. It belongs to each and every one of hundreds of people who gave their time,

passion and effort to campaign for a fairer future."

"We offered a hopeful and positive plan for Macnamara and I am proud that it was endorsed."

"Across our country, it was a hard night for the Australian Labor Party and its true believers."

"Despite that result, those who helped put forward our courageous and ambitious agenda of reform can - and should - hold their heads high."

"Ultimately, though, we respect the decision of the Australian people."

"I offer my congratulations to the Coalition, and my best wishes to my opponents Kate Ashmor and Steph Hodgins-May. Both are people of integrity and talent, and I know both will continue to serve our community."

"To all the volunteers from all sides of politics who devoted their time and effort, you did our democracy proud."

"To my team, I will always be grateful for your tireless efforts and professionalism. You ran an outstanding campaign, and all deserve to own our result. For now, we in the Labor movement must regroup."



New Labor MP Josh Burns and Father Bob Maguire at a local polling booth last month.

"We act with humility. We rebuild. And we devote every day to working as hard as we possibly can - our country deserves no less."

## DOWNSTAIRS

BISTRO & LOUNGE



Monday - 7AM-5PM  
Tuesday - 7AM-5PM  
Wednesday - 7AM-5pm  
Thursday - 7AM-Late  
Friday - 7AM-Late  
Saturday - 9:30AM-Late

**REAL FOOD - WE HAVE GONE BACK TO REAL FOOD!**

P: 9686 5015 | 215-217 Sturt Street, Southbank, VIC, 3006

# Tram funding drip feed

By Sean Car

**The state government has included \$4.5 million towards a tram link to Fishermans Bend over the next two years in its latest budget.**

With public transport the key component to unlocking Australia's largest ever urban renewal zone and driving investment in the precinct, the absence of a significant funding boost for a tram has led to growing uncertainty within the business community.

The two-year funding commitment for a business case (\$2m) and pre-construction works (\$2.5m) means construction on the project, which includes plans for new tram bridge over the Yarra River, won't commence until 2022. The government's 2018 Fishermans Bend Framework forecasts a medium-term delivery of the tram by 2025.

With the precinct's capital city zoning resulting in landowners forking out growing holding costs for sites, Fishermans Bend Business Forum (FBBF) executive officer David Weston said the slow delivery of public transport was of concern to business.

"Businesses in Fishermans Bend are concerned that the solution to public transport access is making the business environment uncertain," he said.

"The State Budget only offers funding for a business case and early stage works. A full funding commitment to tram services is essential to maintain business confidence in the Fishermans Bend project."

"Until there is a commitment to funding, businesses will be considering their options, which in some cases may mean relocation."

The news follows a flurry of public activities in Fishermans Bend in May, with the City of Port Phillip, in partnership with the Fishermans Bend Taskforce, hosting the first



The blue dotted line highlights the proposed new tram routes through Fishermans Bend via a new bridge.

Fishermans Bend Community Forum of the year at Toyota Headquarters on May 14.

In response to concerns such as those raised by the FBBF, it was here that City of Port Phillip CEO Peter Smith flagged the concept of "match making", whereby council works with property owners to pair them with suitable tenants. Mr Smith said he had already been actively working with a number of owners on this basis to activate the precinct.

With the Fishermans Bend Framework forecasting 80,000 jobs by 2050, the state government's 2016 purchase of the 37-hectare GM Holden site in the future Employment Precinct, as well as the delivery of public transport, are central to making good on its projection.

With the University of Melbourne purchased 2.5 hectares of the site for its new engineering campus, and RMIT University understood to be in negotiations to follow suit, the government has formally branded Fishermans Bend as a "priority precinct". With a focus on advanced manufacturing, the area is earmarked to become a national employment and innovation cluster (NEIC).

Minister for the new priority precincts portfolio Gavin Jennings told *Southbank Local News* that the budget also included \$25 million for planning across all priority precincts, which also includes Arden, Parkville, Sunshine and the Richmond-to-Docklands corridor.

"The budget allocated \$25 million to

support planning and delivery across the priority precincts portfolio, and to leverage investment and activity of government and partners," Mr Jennings said.

While the government wouldn't disclose how much of this would be directed towards Fishermans Bend, the funding will continue to support the efforts of the likes of the Fishermans Bend Development Board and the Taskforce.

The budget also states that the new Fishermans Bend Secondary School would be open by 2022, while it is also in the process of finalising a site for a new community hospital, which is understood to be in the Wirraway Precinct.

Despite plans to open its new engineering campus in the "early 2020s" to around 8000 new students, the University of Melbourne's vice-chancellor Duncan Maskell welcomed the \$4.5 million investment towards the tram link.

"This investment is strongly supported by the University of Melbourne," he said. "Public transport will play a vital role in realising Fishermans Bend as a sustainable, connected and thriving innovation precinct that the University of Melbourne is excited to be a part of and help bring to life."

A tram route connecting Collins St to Hartley St in Fishermans Bend via a new tram bridge is still understood to be the government's preferred option. Residents in Yarra's Edge in Docklands, who are against the tram bridge, continue to lobby government to explore alternative routes.

City of Port Phillip Mayor Dick Gross said that the \$4.5 million would investigate options for the potential tram route, including the possibility of a river crossing and potential corridors along Turner and Plummer streets. The state budget did not include any funding for Metro 2.

The state government is expected to release its neighbourhood precinct plans, as well as its finance plan for Fishermans Bend, within the coming months.



Work has started on the first section of open space.

## Access granted

**The City of Melbourne has reopened vehicle access between St Kilda Rd and Sturt St, as construction work progresses on the Southbank Boulevard project.**

Having closed the section of Southbank Boulevard to traffic since July last year to make way for new open space and to move tram lines, the event marks a major milestone for the \$47 million capital works project. Demolition and earthworks are now underway to commence the first of the open space areas, as well as street tree planting, in front of the Melbourne Recital Centre and Southbank Theatre.

New bluestone footpaths between St Kilda Rd and Sturt St, and pavement works on the western side of Sturt St have also been completed and reopened to pedestrians.

Detours will continue to be in place around the worksite throughout June. For regular updates stay tuned to the City of Melbourne's project page [participate.melbourne.vic.gov.au/southbankboulevard](https://participate.melbourne.vic.gov.au/southbankboulevard)



## LUCAS

# ABOVE & BEYOND

When it comes to vertical living, nobody understands local real estate like we do. We know the properties, the people, and the community like no other.

When you deal with us, you'll realise the priceless advantage that knowledge brings.



Agency of the Year  
Suburb: Docklands VIC

9091 1400 | [lucasre.com.au](https://lucasre.com.au)

# Wrecking ball development plans scrapped

Continued from page 1.

"It will keep that legibility of the street and human scale for the first four levels."

The revised plans also include the introduction of a five-star Marriot residential hotel. There are also reductions in gross floor area and plot ratio.

City of Melbourne's planning portfolio chair Nicholas Reece said there "is a world of difference between what we have seen previously back in 2011 and what we have before us today."

"The community expects us to speak honestly about these things and the truth is the previous design and development appraisal was pretty ordinary."

"Too often recently here at the Future Melbourne Committee we have seen development proposals where there's just a plain glass cube put on top of a heritage building."

"I want to challenge Melbourne's architects to do better than that."

Cr Leppert highlighted the tension between development, particularly height, and heritage.

"Obviously in this part of Southbank there's a lot of towers that have a very difficult relationship with the heritage fabric that was there in the past," he said.

"To be frank, this is no exception."

"There's still a very large massing on top of the heritage fabric, but there's a bit more three-dimensionality to the heritage fabric that is being retained even though it is just essentially a facadism."

With councillors having unanimously endorsed the application, it will now go to Minister for Planning Richard Wynne for approval.



A render of the proposal looking from Boyd Park.



L-R: District Governor Bronwyn Stephens makes a toast and members of Southbank Rotary sing the song "Hey Jude."

## Southbank Rotary turns 20

By Alex Dalziel

**Southbank Rotary Club celebrated its 20th birthday last month with a dinner function at Eureka Tower.**

The event took place on Tuesday May 28 at Eureka 89 with many Rotarians, dignitaries and past district governors attending the celebration.

Southbank Rotary was founded on May 26, 1999, and at the time, it was sponsored by the Rotary Clubs of Albert Park and Melbourne.

Over its 20-year history Southbank Rotary has contributed to several humanitarian projects both in Australia and overseas.

Last year the chapter helped launch the Australian farmers drought relief appeal with Channel Nine. Together with other chapters from around Australia the Rotary club raised about \$15 million for the appeal.

Members also travel overseas and initiate community development programs. Recently Southbank Rotary Club conducted a water provision and health education program in Nepal, drawing funds for the project from the wider Rotary community.

The organisation also worked in partnership with the Rotary Club of Bali Taman to establish a women's mobile health clinic to address the health concerns of women in rural Bali.

This project was initiated following the Bali bombings in 2002 when Southbank Rotary raised over \$100,000 in donations, and established a trust fund to support projects over in Bali.

More recently, the club has lead a \$15 million national fundraising campaign for Farmer Drought Relief. Locally, it also collaborates with Ray White Southbank as part of the annual Christmas *Little Ray of Giving* present drive. The club also announced \$6500 in community donations to local charities Shelterbox and Upbeat Arts on the evening of its 20th birthday celebrations.

David Jones, a five-year member of the Southbank Rotary club, said that the club acted as a hub for people within the Southbank area.

"I think that the members have a connection to Southbank, either through the location of their work or their family," he said.

"We've always said it's more of a clan than a club. We have a strong current membership and it's the strength of the clan that will support the future."

Southbank Local News thanks the Southbank Rotary Club for its ongoing contribution to the local community and congratulates it on its efforts over the past 20 years.

The club meets every Tuesday at 6.30pm at the Belgian Beer Café. For more information or to become a member visit [southbank.org.au](http://southbank.org.au)

**GOOD COMPANY.  
GREAT FOOD.  
AMAZING VIEWS.**



Discover a unique collection of riverside restaurants, cafes, bars, boutique shopping and everyday needs. Open daily, including public holidays.

[southgatemelbourne.com.au](http://southgatemelbourne.com.au)   

**southgate**

# A new dog park for Southbank

**Southbank has received plenty of love from the City of Melbourne in this year's draft budget, including \$500,000 for a new dog park on Moray St.**

While much of the excitement for Southbank is centred around major capital works funding injections to Southbank Promenade and the continuation of works at Southbank Boulevard, the new dog park was a hidden bonus for locals.

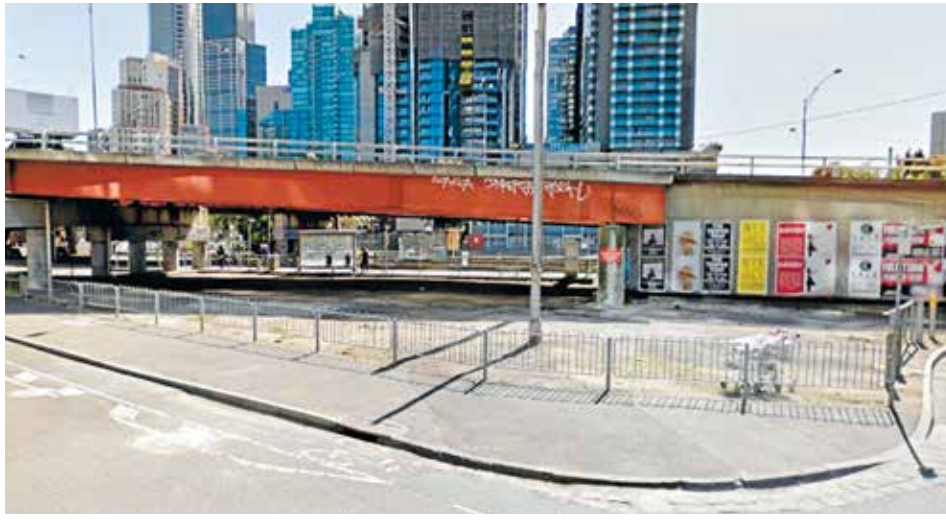
The new space will be located at the mouth of Moray St next to the Kings Way overpass and is being delivered as part of the City Road Master Plan, which council approved back in June 2016.

The master plan only received its first round of funding in last year's budget, which was also \$500,000 towards upgraded crossings between Alexandra Avenue and City Rd.

Outside of this, the council is yet to provide any significant funding for the plan.

However, director of city design at the City of Melbourne Prof. Rob Adams told *Southbank Local News* that due to existing construction at Southbank Boulevard and Boyd Park, any further works in the area would place too much stress on Southbank.

The small parcel of land adjoining the route 58 tram stop underneath the Kings Way overpass, is to be transformed into a new dog park and will complement the neighbouring Boyd Park, which is due for completion in



*The area next to Kings Way on Moray St will be converted into a new dog park for locals.*

the coming months.

The budget also included huge boosts for stage one of the Southbank Promenade renewal project, with \$5.1 million to help revitalise the section of the promenade between Princess Bridge and Evan Walker Bridge.

This project will improve public open space on the promenade by replacing paving, improving lighting and enhancing the

growing conditions for existing trees and green areas.

As reported in the December/January edition of *Southbank Local News*, a key objective of this project is to make the promenade very pedestrian-friendly in an effort to deter cyclists from using the promenade.

Council has also set aside \$1.8 million for the creation of new separated bike lanes

on Alexandra Avenue in South Yarra, Kavanagh St and William St, which will take cyclists from Swan Street Bridge through to Queensbridge St.

The other link in this chain is the provision of \$11.9 million in this year's budget to continue the \$47 million transformation of Southbank Boulevard, which acting Lord Mayor Arron Wood said would be completed in 2020.

A new cycling path along Southbank Boulevard is due for completion later this year, providing the missing link in the council's plan for giving commuter cyclists easier access to the city.

The council has invested \$28.7 million towards public open space in this year's draft budget, which totals \$619 million. It also includes a record \$453 million investment in programs and services.

With an underlying surplus of \$15.03 million, the draft budget proposes a 2.5 per cent rate increase, which is consistent with the Victorian Government's rate cap.

For more information on the 2019/20 draft budget, read the City of Melbourne's two page budget spread on pages 6 and 7 of this edition.

*We invite you  
to explore  
The Evermore  
and Live More!*

Large apartments on offer with a variety of floorplans.

- ✦ Buy direct from developer – Buyer Incentives available.
- ✦ Construction is well underway, move in late 2019.
- ✦ Located only a few minutes from Melbourne's CBD.
- ✦ Resort style living in prime location.

Located in a quiet and safe area of Dorcas St which benefits from access to three postcodes, South Melbourne, Southbank and South Yarra.

THE EVERMORE  
MELBOURNE



Display suite & apartment available to view, contact us for further information  
[www.theevermore.com.au](http://www.theevermore.com.au) or call 1300 383 766

Retreat  
Everyday



Landscape

# RECORD BUDGET BUILDS ON BRIGHT FUTURE FOR MELBOURNE

The City of Melbourne has announced its biggest ever budget of \$619 million for 2019-20, to help make our city more liveable and prosperous as it rapidly grows.

The draft Budget includes a record \$453 million for programs and services, a fully-funded \$166 million capital works program, and an underlying surplus of \$15.03 million.

Among the major projects to be funded, the city will get on with the renewal of Queen Victoria Market, spending \$15 million in 2019-20, including \$6.5 million for the staged, on-site restoration of the historic sheds.

A further \$4.5 million has been assigned to create a master plan for the restoration of Melbourne Town Hall.

The draft Budget also includes significant investments to build on the city's ongoing commitment to families, arts and culture, greening the city and supporting people experiencing homelessness.

Here are 10 highlights of the draft Budget for 2019-20, which will help us continue to create a city for people.



Artist's impressions of the city's largest new community hub at the Munro site on the corner of Queen and Therry streets

## Community facilities

Families will see \$9.3 million invested to complete the redevelopment of Lady Huntingfield Children's Centre and deliver more early education and childcare places to make sure kids get the best start in life.

The city will also spend \$1.8 million to progress the fit out of the \$70 million Munro development at Queen and Therry streets.

Plus \$1 million will go towards planning and design for the \$40 million renewal of Kensington Community Recreation Centre, and upgrade sporting pavilions, courts and equipment.



Early education and childcare

## Open space

Council will invest more than \$29 million to create more places for people to exercise, play and relax in the city, including two and a half hectares of open space on Southbank Boulevard and a new park on Market Street.

## Knowledge

The city will invest \$2.8 million for key knowledge sector events and services to bolster the growth and reputation of the jobs of the future.

This includes support for Melbourne Knowledge Week, and for the renewal of traditional and digital library collections across the City of Melbourne's six libraries.

## Urban forest, water and climate change

The city will invest \$19.1 million in capital works to respond to the impact of climate change, manage parklands and urban forests, and conserve and recycle water.

This will include infrastructure upgrades across 480 hectares of parks and gardens, and funding to plant at least 3400 trees and care for the more than 80,000 trees the city manages.

## Safety

The City of Melbourne will upgrade, maintain and install priority city safety and security measures across the central city with an investment of \$29 million.

This includes \$26.6 million in Victorian Government grants to undertake the Victorian Government's \$50 million central city security upgrade project and \$2.6 million for key city safety infrastructure.

## Business

The city will continue to bring the community together by investing \$3.2 million in community events and festivals.

A further \$1 million will be spent on small business, retail and hospitality, to provide grants, sponsorship, night-time activations and events that boost the economy.

## Transport

Melburnians will see \$28.2 million spent on capital works projects dedicated to walking, cycling and public transport as part of our 10-year plan to move commuters and pedestrians safely and more efficiently through the city.

This will include streetscape improvement works on the southern end of Elizabeth Street, where more than 9300 pedestrians use footpaths during the morning peak.

## Homelessness

Council will invest \$1.9 million in homelessness services, including the Salvation Army's Night Time Safe Place cafe and the Melbourne City Mission's youth homelessness services on King Street.

The centre provides free all-day breakfast, shower facilities, toiletries, underwear and socks, and helps people access doctors, dentists, legal advice, computers, iPads and Centrelink support.

## Waste

The city will continue its annual spend of \$24 million on waste and recycling services, and will spend \$900,000 to deliver the first year of its Waste and Resource Recovery Strategy.

Over the last financial year, the city collected 30,000 tonnes of residential waste and 11,000 tonnes of residential recycling, emptied 2000 bins each day and swept 312km of roads each week.

## Major events and arts

Ratepayers can expect \$18.4 million invested in major events including New Year's Eve, Moomba Festival, Christmas, Melbourne Fashion Week and Melbourne Music Week.

A further \$16.3 million will be allocated to the recurrent Arts Melbourne program, which includes arts grants programs and programs for children and young people through ArtPlay and Signal.

## HAVE YOUR SAY

Public submissions on the draft Annual Plan and Budget 2019-20 are open from Friday 10 May until Friday 7 June.

Submissions will be considered at a special meeting of the Future Melbourne Committee on Thursday 13 June. To have your say, visit [participate.melbourne.vic.gov.au](https://participate.melbourne.vic.gov.au)



## YOUR COUNCIL

### ◀ Melbourne City Council (from left):

Cr Susan Riley, Cr Kevin Louey, Cr Beverley Pinder, Cr Nicolas Frances Gilley MBE, Lord Mayor Sally Capp, Cr Nicholas Reece, Deputy Lord Mayor Arron Wood, Cr Rohan Leppert, Cr Cathy Oke, Cr Philip Le Liu, Cr Jackie Watts OAM.

### Connect with us

[/cityofmelbourne](https://www.facebook.com/cityofmelbourne)  
[@cityofmelbourne](https://www.instagram.com/cityofmelbourne)  
[@cityofmelbourne](https://www.twitter.com/cityofmelbourne)

### Council's vision

Find out more about the Council's shared vision for the city, visit [melbourne.vic.gov.au/councilplan](https://melbourne.vic.gov.au/councilplan)



CITY OF MELBOURNE



Artist's impression of the new park for Market Street

# \$29 MILLION INVESTMENT IN PUBLIC OPEN SPACE

Public open space projects will receive a \$28.7 million boost over the coming year as part of the City of Melbourne's 2019-20 draft Budget.

The investment will focus on the creation and renewal of public open space to cater for Melbourne's growing population, including the densely populated suburbs of Southbank and Docklands.

The Council's goal is to add more than 12 MCGs-worth of public open space to the city over the next 15 years.

Southbank Promenade will receive a \$5.1 million investment to revitalise a 300 metre section of the shared walkway from Princes Bridge in the east, to Evan Walker Bridge in the west. This project will improve public open space on the riverside promenade with new paving, improved public lighting and enhanced growing conditions for the trees.

Southbank Boulevard will also receive attention with \$11.9 million to continue upgrade works from St Kilda Road to City Road. The new Southbank Boulevard cycle path will be complete by late 2019 and will provide a new route for commuter cyclists to access the city. The full \$47 million project,

which will create 2.5 hectares of new public open space and neighbourhood parklands on Southbank Boulevard, is due for completion in 2020.

This year, the City of Melbourne will also invest \$3.4 million towards a joint \$7.53 million project with CBUS to create a new 2000 square metre public open space for Market Street alongside the Collins Arch development.

This will be the first park created in the central city since the City Square was developed in the 1970s. The new park will provide open space in an area of Collins Street that is used by 40,000 pedestrians each day.

The draft Budget also revealed that Seafarers Rest Park, on the north bank of the Yarra in Docklands, will receive a \$1 million investment for renewal works, in partnership with the Victorian Government and developer Riverlee.

As backyards in the inner city are shrinking and more people are living in apartment blocks, Council's plan to expand open space will ensure that residents and workers are able to enjoy more open spaces for recreation, public gatherings and relaxation.

Residents continue to have the opportunity to provide feedback on the draft Budget until 7 June at [participate.melbourne.vic.gov.au](http://participate.melbourne.vic.gov.au)

LOCAL INVESTMENT	
Southbank Promenade	\$5.1 million to revitalise a 300 m section of the promenade
Southbank Boulevard	\$11.9 million to finalise stage one of the \$47 million project
Market Street	\$3.4 million towards a \$7.53 million project to create the first central-city park since City Square was developed in the 1980s
Seafarers Rest Park	\$1 million towards adding 3500 sqm of open space to Docklands
Fawkner Park	\$1.2 million towards upgrading the Pasley Street North entrance to improve landscape health, drainage, safety and amenity as part of the Master Plan recommendations
Lincoln Square	\$2 million towards a new concept plan to add 3000 sqm to one of Melbourne's oldest parks, and create a new play space around 150 year-old Moreton Bay figs
JJ Holland Park	\$1.6 million for a new playground in Kensington
Spring Street	\$150,000 to create new public open space outside Princess Theatre

## BUSINESS, RETAIL AND EVENTS PROSPER

The Firelight Festival will once again light up Docklands thanks to a \$700,000 investment by the City of Melbourne.

This key event, which generated \$5 million for the local economy last year, continues to invigorate Docklands in the cold winter months.

As Melburnians know, Melbourne is Australia's events capital, with hundreds of events taking place across the city every year. These events, both big and small, add to the unique character of our city, offer enriching experiences and contribute significantly to our local economy. This is why the City of Melbourne has committed to investing in events around the City as part of Council's draft Annual Plan and Budget 2019-20.

Funding for other events, which have become significant to Melbourne's business community over the years, includes \$2.5 million for the Council's Events Partnership Program and Triennial Sponsorship Program.

These programs have sponsored more than 500 events over 10 years.

The draft Budget also includes expenditure on Melbourne's small business, retail and hospitality sector, including \$500,000 for the annual Small Business Grants Program and \$100,000 for the Business Event Sponsorship Program. Small business makes up 80 per cent of the municipality's businesses.

Council will also fund \$250,000 in marketing and promotion to support our much-loved independent retailers across the city.

To keep up to date with the latest events, or to find vibrant small businesses in your area, visit [whatson.melbourne.vic.gov.au](http://whatson.melbourne.vic.gov.au)



Firelight Festival

## KEEP IN TOUCH

Be inspired by the stories of our city when you read *Melbourne* magazine, the City of Melbourne's ratepayer newsletter. Published in print and online, the magazine celebrates the energy and aspirations that make our world-leading city unique. Subscribe to the email newsletter at [magazine.melbourne.vic.gov.au](http://magazine.melbourne.vic.gov.au)

CITY OF  
SUSTAINABILITY  
EVENTS  
WELLBEING  
PROGRESS  
CULTURE  
ENTERPRISE



**CITY OF PROGRESS**  
We are building a better city for now and the future.



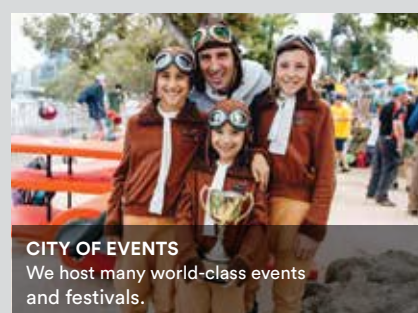
**CITY OF SUSTAINABILITY**  
We champion action on climate change and waste.



**CITY OF ENTERPRISE**  
We support innovation and contribute to a thriving business culture.



**CITY OF CULTURE**  
We celebrate diversity and creativity.



**CITY OF EVENTS**  
We host many world-class events and festivals.



**CITY OF WELLBEING**  
We are creating a healthy and inclusive community for all.

VIII



## An evolution in living never seen before in Melbourne.

A limited collection of 36 private residences offering quarter, half and full-floor options from \$1.45M.

In a Melbourne first, each floor comprises no more than four corner residences, with every residence having private lift access into individually curated lobbies.

8 Palmerston Crescent, South Melbourne

Limited quarter-floor residences available.

Book your exclusive tour of the immersive display gallery and full-size replica sub-penthouse with the developer now.

TheEighth.com.au  
@TheEighthMelbourne

Ruby Clifford  
0425 876 584

The Eighth by Crema. Designed by Elenberg Fraser and Mim Design.



ELENBERG FRASER

MIM DESIGN



OPENWORK

DS +/-





# \$27 million bike lanes

*St Kilda Rd will be the beneficiary of new \$27 million separated bike lanes thanks to the Andrews Labor Government.*



The huge funding boost allocated in this year's state budget will see a combination of new central safety zone bike lanes and Copenhagen-style kerbside bike lanes, with construction due to start this year.

The central safety zone will see the two middle lanes of St Kilda Rd from the National Gallery of Victoria (NGV) to the St Kilda Junction replaced with a dedicated bike lane with a protective barrier.

Copenhagen-style bike lanes will also be built south of St Kilda Junction from Carlisle St.

"St Kilda Rd is Melbourne's busiest tram route and one of Melbourne's busiest bike routes - that's why these safety upgrades are so vital to separate cyclists from other traffic," Minister for Roads and Road Safety Jaala Pulford said.

"We've carefully planned this new upgrade with all road users in mind - safely separating bikes and traffic for good while having the least impact of travel times for drivers."

The City of Port Phillip had raised concerns

back in 2017 when the proposed changes were originally flagged by the state government. Cr Katherine Copey had said at the time that the transition from central cycling lanes to regular kerbside Copenhagen lanes at the St Kilda Junction presented safety concerns for cyclists.

However, Mayor Dick Gross said it welcomed the funding and that council looked forward to working with the state government on finalising the design.

"Council sought these commitments in the lead-up to the State election, so we are delighted this important project has been funded in the Victorian Budget 2019/20," Cr Gross said.

"St Kilda Rd is an important arterial for cyclists and council welcomes funding that will dramatically increase usage."

"Council looks forward to working with the Victorian Government in finalising the design of the new bike lanes on St Kilda Rd to maximise the design outcomes and ensure the safety of cyclists."

# Accounting for careers

*Strong leadership skills and critical thinking are giving Holmesglen learners a clearer pathway into the competitive accounting and finance field.*



The Master of Professional Accounting (MPA) is one of Holmesglen's industry-accredited courses, which is offered at its St Kilda Rd campus.

Designed to connect students with their future business careers, the course provides advanced theoretical and technical knowledge in accounting disciplines.

This includes financial accounting and reporting, taxation law and practice, corporate governance, mergers and acquisitions, management accounting and auditing.

Holmesglen's course leader, Vasanthi Peter, believes industry-related teaching gives learners greater career potential.

"With globalisation and labour being mobile, expert knowledge in accounting and finance is increasingly in demand. This degree builds critical thinking, communication and leadership skills," she said.

"Students complete two research papers, including a mini-thesis. There are several career opportunities for MPA graduates

since employees are looking for research-savvy candidates."

Graduate Sharmaine Leonora used the course to develop her business insights, after moving from the Philippines.

"My studies paved the way for new experiences. It was very interesting to share knowledge with talented people and to work closely with people from other backgrounds," she said.

Holmesglen's MPA graduates meet the requirements for associate membership for the Institute of Public Accountants (IPA) Australia, Certified Management Accountant (CMA) Australia, Certified Practising Accountant (CPA) Australia, and Chartered Accountants Australia and New Zealand.

The course's strong foundations across business and finance present learners with a variety of career paths to consider on graduation.

Find out more about Holmesglen's Master of Professional Accounting at [holmesglen.edu.au](http://holmesglen.edu.au) in time for the July intake or book now for the St Kilda Rd campus Open Day on June 20.

# 2019 COURSES

## AT HOLMESGLEN CITY CAMPUS

holmesglen

### BUILDING CONSTRUCTION

- CPC50210 Diploma of Building and Construction (Building)
- CPC40110 Certificate IV in Building and Construction (Building)
- BSB41415 Certificate IV in Work Health and Safety
- BSB51315 Diploma of Work Health and Safety
- OHS and Safety short courses

### FASHION DESIGN

- BFD16 Bachelor of Fashion Design
- MST40516 Certificate IV in Applied Fashion Design and Merchandising
- MST20616 Certificate II in Applied Fashion Design and Technology

### TOURISM AND EVENTS

- SIT50316 Diploma of Event Management
- SIT40116 Certificate IV in Travel and Tourism

### ENGLISH COURSES

- English plus
- English for Early Childhood Education
- OET Preparation
- CELTA

### BUSINESS AND FINANCE

- MPA14 Master of Professional Accounting
- SCPDDM16 Certified Digital Marketing Professional
- Agent's Representatives Course

### COMMUNITY SERVICES

- CHC52015 Diploma of Community Services

### EARLY CHILDHOOD EDUCATION

- CHC50113 Diploma of Early Childhood Education and Care
- CHC30113 Certificate III in Early Childhood Education and Care
- CHC30213 Certificate III in Education Support

### SPORT

- BSPB16 Bachelor of Sport Business
- BSM13 Bachelor of Sports Media

**Call 1300 639 888 to apply now, or visit**  
 Holmesglen City Campus  
 332 St Kilda Rd, Southbank  
[holmesglen.edu.au](http://holmesglen.edu.au)

CRICOS Provider Code: 00012G, RTO-0416.

# A true man of Melbourne

By Sean Car

**As a 14-year resident of the CBD, our community can rest assured that the City of Melbourne's new Chief Executive Officer (CEO) Justin Hanney has its best interests at heart.**

Having started in the role in January, Mr Hanney was given the nod for the city's top job from a field of more than 140 candidates last year. Based on his glittering CV, it's easy to see why.

The City of Melbourne is incredibly well served with Justin at the helm. With an extensive background working in state government, his connections are sure to help get a lot of things moving for the city.

Before joining the City of Melbourne, he worked as the lead deputy secretary of the Employment, Investment and Trade Group at the Department of Economic Development, Jobs, Transport and Resources.

Having also previously overseen the likes of Regional Development Victoria, Creative Victoria, Visit Victoria, Development Victoria, Agriculture Victoria, Trade and Investment Victoria and Small Business Victoria, there is no doubting his ability to get things done.

However, it's his intimate knowledge of, and care for, his local neighbourhood as a long-time Flinders St resident that places him in extra good stead for what he described as "the best job in the world."

"I love it. I wake up every day with a spring in my step," Justin told *Southbank Local News*. "I get to interact a lot with the city as a resident and the danger is now whenever I walk the streets on the weekend, if we're going off to a restaurant or the park or a footy game you start to see a lot more."

"If there is a bin that's not quite right or there is a bit of graffiti on a building that shouldn't be there you start to take a lot more notice. I find that I'm taking photos every time I go walking to put them on the system and my wife tells me that I have to stop doing that!"

While originally from Perth, Justin has spent most of his life in Victoria. Having met his now wife in Melbourne as a teenager, together they have raised four daughters here while he has worked in a range of positions across the state.

His background in local government is also



New City of Melbourne CEO Justin Hanney.

extensive. He began his career as a youth worker in Collingwood, before working in senior roles at local councils in Dandenong, Bendigo and Wangaratta. He also previously served as a CEO of the City of Yarra.

Having interacted a lot with the City of Melbourne over many years in state government, he said the opportunity to make an impact at a grassroots level was largely what had attracted him to his new role.

"One of the things in state government, and I had a stint up in Canberra for 12 months as well on secondment, is that you're really removed from what happens on the ground," he said.

"As I used to walk in and around the city, I'd look at the number of people living on the streets. The role that I could play in a state government department versus a role in local government are chalk and cheese."

Justin also pointed to the extraordinary amount of urban renewal areas on the fringe of the inner city, stating that, globally, it was unprecedented. With the likes of Fishermans Bend, E-Gate, West Melbourne and Arden-Macauley on the doorstep of the CBD, the opportunities to grow the city genuinely excites him.

Having played a central role to the state government's purchasing of the Holden site in Fishermans Bend for the creation of an employment and innovation precinct, he said he was keen to use his connections to accelerate such projects. High on his agenda is getting a tram connected there as soon as possible.

"I think when you look at what could happen on that space in such close proximity really critical to that site is getting the tram into Fishermans Bend," he said. "Without the tram it will be more challenging to get Melbourne University and RMIT to fully commit to their developments."

"When you look at what could happen within that precinct and within Arden-Macauley it's very exciting. Both of these sites will be game changers for Melbourne."

As technology advances and tourism continues to grow in Melbourne, Justin's background in growing employment and investment places the city's economy in good stead for being ready to adapt to change.

As for the team around him, he said he had been pleasantly surprised by the quality of staff at the City of Melbourne, which he described as exemplary. He also praised his team of councillors, who he said had rebounded incredibly well in light of the governance challenges left by former Lord Mayor Robert Doyle.

"The calibre and the quality of the councillors is quite exceptional," he said.

"The way in which they work together and the quality of the governance; they really work well together."

"The quality of the staff that the City of Melbourne attracts is why I think it's considered the best local government in Australia. Some of them live an hour and a half away and commute each day in and out. They could easily work in their own communities, but they choose to work here because of the size of the city, what it can do and what it can represent."

Having permanently located to the CBD 14 years ago, he said the city's growing appeal as a place to raise a family was what had attracted he and his family to relocate from their former Malvern East home.

From its green open spaces and creative institutions to its libraries and recreational facilities, he has grown a special appreciation for everything our city has to offer. As a boating enthusiast, he said he and a friend also regularly travelled from Williamstown and moored their boat (or as he described it, their "tub!") at Docklands; a waterfront precinct that he described as "world-class".

Through his strong networks at State Government, he said he hoped to use his time as CEO to continue building on everything that made Melbourne one of the world's most liveable cities.

"I have some excellent relationships with state government and that will continue," he said. "I think it's sometimes knowing not just where to go and not just what department to go to but more specifically who to go to."

"I have this mantra with our staff here that we're here to get things done and if we're not doing things, providing great service and advancing on issues that matter than we shouldn't be here."

"Let's get the basics and the service delivery exceptionally good and then let's continue to be the exemplary city throughout the world. I want to take the baton and ensure that whoever I pass it onto next that Melbourne continues to be that exemplary city."

**SPECIALS**

*The Perfect Waxing Package*

ONLY **\$99**

FULL LEG, BRAZILIAN, UNDERARM, EYEBROW & UPPER LIP

SAVE **15%**

CUT & BLOWWAVE

JUST **\$80**

OFFICE BREAK MANI & PEDI WITH SHELLAC

**30% off IPL**

**RoopRani**  
Hair & Beauty Salon

P5 SOUTHGATE COMPLEX - PH 9686 6504 - WWW.ROOPRANI.COM.AU

\* T&C's Apply.

# Shrine knockback

**The City of Melbourne has refused a request for increased funding from the Shrine of Remembrance.**

The Shrine was seeking a new five-year memorandum of understanding (MoU) and a significant increase in the value of the council's annual grant from \$317,006 to \$800,000, representing a 158 per cent increase.

Under the *Shrine of Remembrance Act 1978*, council is required to provide secretarial and administrative services to the Shrine, payment for the supply of water and improvement and maintenance of parks and gardens.

In requesting additional funding, The Shrine proposed an expanded interpretation of council's obligations and identified up to eight full time equivalent existing secretarial and administrative staff that it considered should be funded by council. In a report from management to the May 28 council meeting, officers stated that the request was "unreasonable".

"It's management's view that this is an unreasonable interpretation of the intent of the Act," it stated.

As a trustee of The Shrine, Lord Mayor Sally Capp declared a conflict of interest on May 28. With deputy Lord Mayor Arron Wood absent from the meeting, councillors nominated Cr Susan Riley to act as chair.

Under an updated MoU, councillors unanimously approved an increased grant of \$333,000, while pre-approving the same amount for each year to financial year 2023-24.

The Shrine of Remembrance did not respond to *Southbank Local News* for comment.

# Open for music!

From page 1.

While staff and students moved into the new Melbourne Conservatorium of Music in March, final works, including the completion of the new linear public park between Sturt and Dodds streets, have continued since.

The grand opening on June 1 saw Minister for Creative Industries Martin Foley officially launch the facility in front of hundreds of dignitaries, alumni and special guests.

The event began with a traditional smoking ceremony and Welcome to Country in the new linear park with Boon Wurrung Elder N'arweet Carolyn Briggs. This was accompanied by student performers from the university's Wilin Centre for Indigenous Arts and Cultural Development.

Master of ceremonies and ABC News Breakfast presenter Virginia Trioli later got formal proceedings underway in the conservatorium's Hanson Dyer Hall, which was broadcast via video link to more guests in the Kenneth Myer Auditorium on the ground floor.

Chairman of the Ian Potter Foundation Charles Goode AC and University of Melbourne vice-chancellor Duncan Maskell both addressed the audience, with Professor Maskell using the occasion to announce the new partnership with the ACO.

The university will be recognised as the official university partner of the ACO, with an investment of \$200,000 a year over five years. The Southbank campus, home of the Faculty of Fine Arts and Music, will become the new Melbourne development and education home for the ACO.

"The ACO partnership, made possible by the Sidney Myer University Trust, will provide our students at the conservatorium with exceptional educational enrichment opportunities to engage and learn from the national orchestra's musicians," Professor Maskell said.

"These partnerships demonstrate how the Southbank campus transformation enables us to expand community engagement, foster



The orchestra performs in the Kenneth Myer Auditorium in the new Ian Potter Southbank Centre.



Welcome to Country in the new linear park.



Charles Goode AC, Duncan Maskell, Virginia Trioli and Martin Foley.

new partnerships locally and internationally, and help our cultural precinct partners achieve the city's vision for a thriving arts scene."

Minister Foley said the building was a game-changer for music education and a new drawcard for the Melbourne Arts Precinct.

"This partnership will foster important career pathways for students and will welcome another leading creative organisation to the precinct, which is already home to the highest concentration of arts and cultural organisations anywhere in the world," Mr Foley said.

Guests to the opening were then treated to a celebration that continued into the evening with every one of the building's eight levels showcasing different performances, including jazz, solo piano, orchestras and chamber music, before finishing with a string ensemble.

The Ian Potter Southbank Centre was funded by the University of Melbourne, the Victorian Government, and generous philanthropic support, particularly from The Ian Potter Foundation, Martyn and Louise Myer and The Myer Foundation.



ENA Greek Street Food is part of Melbourne's thriving dining culture. Situated on the banks of the Yarra River, ENA is bringing modern twist to food inspired by the streets of Greece.

Introducing new Winter menu with dishes to warm you up for the winter, with mouth watering house made Soup and Dishes.

**WE INVITE YOU TO SHARE THE FEASTING WITH FRIENDS AND FAMILY. YIAMAS!**

Shop M4/9 Mid Level Southgate Complex  
28 Southgate Ave, Southbank  
Ph: 9690 6205 Menu: [enagreekstreetfood.com.au](http://enagreekstreetfood.com.au)

**Receive a Free Bottle of wine\***  
on minimum spend of \$100

Bring the voucher to receive the free bottle of wine

# Brothel turned tower

**Local developer Crema Group has launched its new 18-storey mixed-use development on the site of a former brothel in the Domain Precinct.**

*The Eighth* by Crema, situated at 8 Palmerston Crescent, will comprise 36 luxury apartments on what was formerly the Pink Palace brothel, which closed last year after being purchased by Crema Group and venture partner Geomax Capital.

The Domain Precinct, which is directly connected to Southbank's low-rise residential village, is ready to emerge as one of Melbourne's newest and most sought-after locations. Within walking distance to the Shrine of Remembrance, Botanic Gardens, Albert Park and the future Anzac metro station, the area is flagged for wide-scale development and is also the subject of a master plan currently being devised by the City of Port Phillip.

Representing the ongoing transformation of the Domain Precinct, the 908 sqm Palmerston Crescent island site is set to be transformed into a \$150 million 18-storey future focussed building, with every aspect of the project rooted in a holistic approach to living.

*The Eighth* has been designed by architect Peter Kennon of Studio Kennon, formerly of Elenberg Fraser, with the building's interiors curated by Miriam Fanning of Mim Design. Openwork, who recently completed *Doubleground*, the 2018 winning design for the annual NGV Architecture Commission, is also engaged on the project.

*The Eighth* is set to provide much needed activation in the precinct as a true destination, with its hotel-inspired grand lobby flanked by two cornerstone hospitality offerings including a 250 sqm café, as well as a smaller European theme restaurant and wine bar.

The building will also feature 3000 sqm of boutique office space spread over four levels. To complement this space and to enhance the commercial experience, Crema will be retaining the fifth floor of the building to own and operate *The Eighth Club* - a holistic lifestyle club which will feature an executive business lounge with



A render of "The Eighth" by Crema Group.

café, lounge and meeting facilities. It will also include a luxury day spa and wellness studio.

In addition to *The Eighth Club*, the company's director Nicolas Crema said it would be retaining management rights of the entire building to ensure it is run in line with its vision and expectations.

Mr Crema said that he and architect Peter Kennon had bonded over their mutual frustration with building and residential developments, which often claimed to offer a superior lifestyle but lacked understanding for the way people really wanted to live.

"Our shared vision has resulted in a building that has intuitive, easy living in its DNA," Mr Crema said. "Each floor within the residential tower comprises no more than four generous corner residences, with every single residence having private lift access into curated private lobbies, which is a first in Melbourne."

A full size replica sub penthouse is currently open for viewing, with appointments available directly with Nicolas Crema and Peter Kennon. Construction is due to commence later this year.

[theeighth.com.au](http://theeighth.com.au)

# Timber proves a stumbling block

By David Schout

**Developers are opting against "affordable and sustainable" timber frames in new buildings because of inflexible planning rules, a new report claims.**

As a result, there have been calls for the Victorian planning minister to allow timber-constructed buildings to marginally exceed height restrictions.

The report, by planning consultants Tract, argued that developers currently opt for more expensive, energy-intensive, and disruptive concrete and steel alternatives because of the deeper floor systems required for timber structures.

The additional height required per floor - approximately 250mm - can force a building to be knocked down one storey to fit inside the height limit, which impacted on yield.

Robert Pradolin, former general manager for Frasers Property Australia and now affordable housing strategic advisor, said this had negative flow-on effects.

"The loss of a floor due to using timber can make it unviable for the developer and therefore the other benefits of using timber, including affordability and sustainability, are lost to the broader community," Pradolin said.

"The requirements to be more sustainable in our built form will only increase. We have a building material that captures carbon, is cheaper to build and is sustainably grown. It's probably the ultimate renewable. And, what other building material has been endorsed by Planet Ark?"

According to Tract, under Victorian planning provisions local authorities cannot approve an increase in height to promote the use of more sustainable materials like timber.

Further, any height increase triggered a

permit amendment process.

"Most developers will not go through another long, difficult and problematic amendment process just to change from concrete to timber. They will always take the easiest route and stay with concrete," Pradolin said.

Timber structures were also beneficial for local residents impacted by construction noise, making its case "compelling" according to Pradolin.

"Typically, when compared to concrete, much of the structure is premanufactured offsite," he said. "This results in...increased neighbourhood amenity as fewer truck movements are required, significantly reducing the impact to local residents during construction."

Planning Minister Richard Wynne said while his government made no apologies for strict adherence to height controls, he hoped to find a balance.

"I understand height controls associated with the use of timber frames in buildings can impact proposals for new mid- and high-rise structures, however these controls are in place for good reasons," he said.

"It is critical we strike the right balance between ensuring developers and builders can deliver sustainable and cost-effective projects that service the community, while at the same time meeting modern safety and quality standards."

Mr Wynne said it was likely the issue would be revisited.

"We're always looking for ways to improve planning and building controls and will continue working with town planners, urban designers, developers, building designers and building practitioners to help them deliver quality projects that meet the needs and expectations of the community."

The issue is of particular interest as the state government explores sustainable development options in Fishermans Bend. The government has made clear its green intentions for the area, with sustainability principles high on the agenda.

**OSTEO STRONG**

OsteoStrong helps improve:

- Bone Density
- Balance
- Strength
- Joint and Back Pain
- Long Term Blood Glucose (HbA1c)

Only one 10-minute session a week, no sweat, normal clothes.

OsteoStrong South Melbourne  
378 Clarendon St, South Melbourne  
P: 7004 1284  
E: [sthmelb@osteoststrong.com.au](mailto:sthmelb@osteoststrong.com.au)

Contact us for a Complementary Session

**BONE DENSITY RESEARCH**

ANALYSIS FROM 152 PEER REVIEWED STUDIES

In each of these studies, participants also took Calcium and Vitamin D supplements

**Musica Viva**  
International Concert Season 2019

**Doric String Quartet**

**TUE 11 JUNE 7PM**  
**SAT 15 JUNE 7PM**

**Elisabeth Murdoch Hall**  
**Melbourne Recital Centre**

[musicaviva.com.au/doric](http://musicaviva.com.au/doric) or  
call 1800 688 482 (no booking fees)



Cox Architecture director Paul Curry.

## Skyscrapers Summit

By Rowan Webb

*The Melbourne Convention and Exhibition Centre (MCEC) will host the third annual Australian Smart Skyscrapers Summit from June 25 to 26.*

Cox Architecture director Paul Curry will present on effective design for multi-tower precincts, with a focus on how Cox Architecture's \$2.8 billion Melbourne Square development in Southbank will benefit the local community.

The Kavanagh St development will consist of four residential towers, one hotel and one commercial tower upon estimated completion in 2027.

Beulah International's executive director Adelene Teh will also present at the Summit. Beulah's international design competition last year for a \$2 billion tower on City Rd attracted a lot of attention, with UN Studio & Cox Architecture's project *Green Spine* emerging victorious. If planning permission is granted, Green Spine will become Australia's tallest building upon completion.

Those wishing to attend the third annual Australian Skyscrapers Summit can register their interest online.

[skyscrapersconference.com.au](http://skyscrapersconference.com.au)

# What's climate change doing to Melbourne's plants?

By Meg Hill

*There's been some curious plant activity this autumn in Melbourne. Because plants are always changing, at different paces, it can be hard to monitor without conscious effort.*

Suddenly, you realise something is blooming when it shouldn't be. Or vice versa.

"Plants never stay the same, they're always changing, but within that process there are marked moments," said Dimitri Bouzalas, a guide at the Royal Botanic Gardens.

"When buds form, when leaves start to fall, these are important moments. We're capturing when those changes happen."

She was guiding a *Climate Watch* tour of the gardens, running to introduce attendees to the new initiative.

The Climate Watch app facilitates a participatory kind of plant monitoring. Users can focus on specific plants near their home or by their route to work and record when significant changes take place.

The data is compiled, with reference to geographical location, to create an in-depth understanding of how different plants are affected by climate change.

In 2016, a City of Melbourne study found that 19 per cent of tree species planted in the municipality were already vulnerable to climate change, 35 per cent could become more vulnerable by 2040, and 62 per cent by 2090.

These results were found using projections that scientists considered conservative at the time. Predictions have only got worse since then.

Dimitri, now retired, was a science teacher for most of her life. As the way she taught about climate change changed with new, and more dire, statistics, government inaction remained in place.

She referred to Greta Thunberg, the Swedish student who started the international School Strike 4 Climate when she was 15, as an inspiration of hers at the start of our *Climate Watch* tour.

"Earth behaves like any other living thing,



Royal Botanic Gardens guide Dimitri Bouzalas during a Climate Watch tour of the gardens last month.

like an organism, like a human body," she said.

"If we know how a human body works, we know when something makes someone sick, we avoid doing that thing again. The difference is we've only got one earth."

The City of Melbourne study found that jacarandas, native evergreen brush box's and indigenous coast banksias coped better with climate change.

Dimitri included a jacaranda and a coast banksia in her tour of the gardens, but also noted that banksias especially are slow growing trees, and the data was unclear on long term effects.

"Nature doesn't give us immediate answers," she said.

Coast banksias do, however, deal badly with isolation caused by development. Part of the

reason they're identified as a more adaptable plant is the way they can mate and spread to more conducive locations.

This is hindered when one of the trees is grown in the middle of built up development.

There were worrying outcomes from the study for Dutch elms and some indigenous eucalypts and acacias.

There's always been changes in the earth's climate. When Dimitri took our tour to see a firewheel tree she told an anecdote about firewheel tree flowers being found as fossils in Gippsland mines.

The trees are tropical, which indicates "Victoria was once much warmer".

But the rate of man-made climate change makes it difficult to envision any living organism being ultimately able to adapt.



**INTERESTED IN JOINING A NEW CHOIR IN SOUTHBANK?  
JOIN US AT BOYD COMMUNITY HUB ON FRIDAY MORNINGS.**

- All welcome • No auditions • Professional Choir leader
- 10.30am-12.00pm followed by an informal lunch

Upbeat Arts promotes social inclusion,  
positive mental health and overall wellbeing

Call David on 0419 889 646 or email [choir@upbeatarts.org.au](mailto:choir@upbeatarts.org.au)  
for more information • [www.upbeatarts.org.au](http://www.upbeatarts.org.au)

# Drafting a career on the axis

By Meg Hill

***The Emerging Writers' Festival (EWF) returns to Melbourne in June, with over 300 artists participating in more than 70 events around the City of Melbourne area.***

Alistair Baldwin, a 23-year-old writer and comedian, is appearing in three events at the EWF. He moved to Southbank just after his 18<sup>th</sup> birthday.

"I'm from Perth originally but I applied to do a Bachelor of Screenwriting at VCA," he said.

"Within the space of two months I graduated high school, turned 18 and moved here to Southbank."

The Melbourne characteristics described when it was designated a UNESCO City of Literature designation were a draw card for Alistair.

Melbourne was the second city in the world to be listed.

The designation was made with recognition including initiatives, educational programmes, the urban environment, libraries, bookstores, cultural centres and hosting festivals like the EWF.

Most of this is assembled in the CBD and the inner city. Unfortunately, the concentration of well-funded and supported literature initiatives doesn't stretch equally out to the suburbs.

But he had further cause to move to the centre of the city.

"I famously want to be close to things," Alistair said, referring to his muscular dystrophy condition which causes him to wear leg braces.

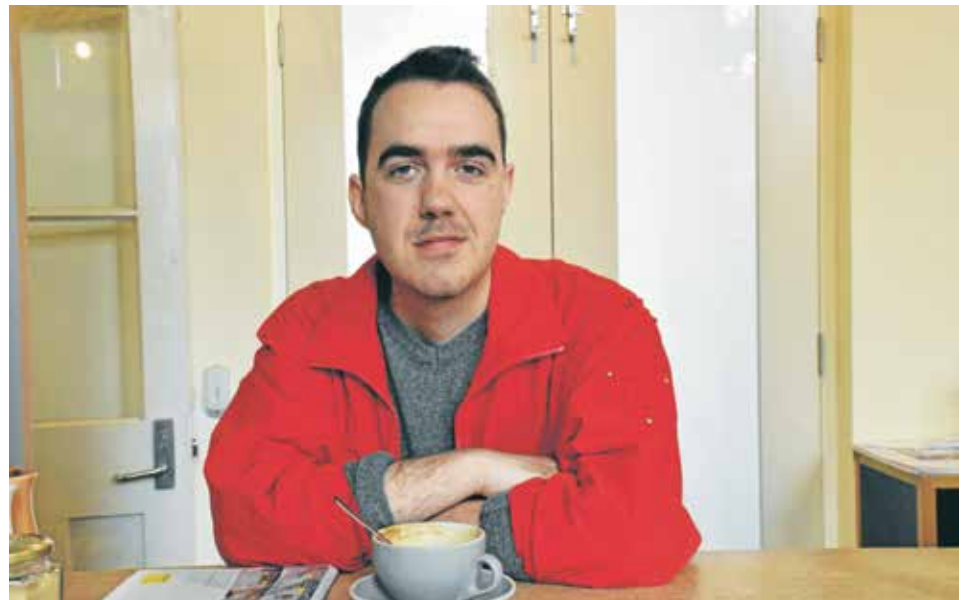
"I did my Bachelor at VCA and I lived like three blocks away, and then I did an Honours degree there."

"And the fifth year I started getting work at the ABC, and its Southbank studio was two blocks away."

Alistair works writing, and sometimes acting, for *The Weekly* and *Hard Quiz*, and previously for *Get Krack'n*.

While living in Southbank he was also awarded a Hot Desk Fellowship at the Wheeler Centre in the CBD, hosted *Lemon Comedy* at queer Fitzroy bookshop Hares and Hyenas, performed at various other events and written for SBS, ACMI Ideas, Archer and more.

Last year he also participated in the City of Literature's mock parliament. He wrote a speech about moving to Melbourne to become a writer.



"I wrote about moving to Melbourne and how so many of the opportunities I've been fortunate enough to have, have been directly because I made the move from Perth where it's much smaller and there's not as much opportunity, especially in TV," he said.

"But then also sort of balancing that with the thought 'well I shouldn't have had to move to be a writer.'"

"There's people who don't have the luxury to moving interstate and having a family friend with a Southbank apartment you can move into."

He said the idea of talent or genius is "kind of bullshit", and reality has more to do with potential, access and luck.

"Because Melbourne is Australia's City of Literature, does that mean that Melbourne owes something to all the other cities that don't have the arts infrastructure Melbourne has?"

Alistair will be appearing in the EWF's *Work in Progress*, *First Stage* and *Late-Night Lit* events. [emergingwritersfestival.org.au/writer/alistair-baldwin/](http://emergingwritersfestival.org.au/writer/alistair-baldwin/)

# Choir call out!

By Sarah Bartlett

***Southbank's new community arts organisation Upbeat Arts is looking for new members.***

Meeting every Friday at the Boyd Community Hub, the South Village Singers community choir supports marginalised communities through education and social inclusion.

The program offers tailored arts and cultural programs that strive to engage, educate and empower people that are disadvantaged, marginalised or socially excluded.

The choir's two leaders, Kerry Gerraty and Levi McGrath, are experienced musical artists and educators who are passionate about helping their local community, using the choir as their vehicle.

Having worked with the choir since its inception, Kerry specialises in classical piano, choral music and arts event management. Since 2011, she has worked with Short Black Opera Company - Australia's National Indigenous Opera Company.

She is also the manager of the Dhungala Children's Choir (DDC), which assists indigenous youth performers from around Australia with all components of rehearsal and performance work.

Levi McGrath is a social justice musician from Melbourne. His work focuses on



Choir director Kerry Gerraty (centre) with members.

bringing music to the younger generation.

Mr McGrath released his debut album *Move* in 2007. Other professional work includes the release of his album *Children of War* in 2009, which was inspired by work with former child soldiers in Uganda. The album promotes the message of social change and covers the stories of suffering, hope and dignity.

He has also toured Canada supporting former lead vocalist of Newsboys, as well as supporting US rock bands Third Day and Need To Breathe on their Australian tour. Mr McGrath frequently tours Australia, New Zealand and Europe.

For more information or to join visit [upbeatarts.org.au](http://upbeatarts.org.au)



Physiotherapists Sophie Heywood and Elizabeth Villalta will host 'Plunge Into Water' this month at Boyd.

# Aquatic fitness

By Alex Dalziel

***Aquatic Physio Exercise Australia is running a free aquatic exercise event at the Boyd Community Hub on Monday, June 24.***

Organisers Sophie Heywood and Elizabeth Villalta said that the event would be perfect for people who wanted to stay fit over the colder winter months, especially for those who suffered from an injury that impaired movement.

*Plunge Into Winter* will be an opportunity to get up-to-date research about aquatic exercise and some practical tips on how to start. There will also be a discussion about how to keep moving and motivated during winter.

Five readers of *Southbank Local News* can go into the running to win a free pool assessment conducted by physiotherapists, if you live in the area and have a pool in your building.

*Plunge into Water* will take place on June 24 at the Boyd Community Hub from 5.30 to 6.30pm.

For details on the event or to register your interest visit [aquaticphysioexercise.com.au](http://aquaticphysioexercise.com.au)

# THE ARTS PRECINCT

## TERRACOTTA WARRIORS & CAI GUO-QIANG



### Review by Rhonda Dredge

The Winter Masterpieces exhibition is eagerly awaited each year for its insight into global art culture.

What will the NGV choose to bring out? Will the exhibition keep us talking over the long cold months?

At first the selection of the Terracotta Warriors from China seems like a dull choice.

After all, the warriors were discovered back in the 1970s and there has already been a huge buzz particularly when they were shown here in 1982.

Here were original earthenware soldiers made and buried near the Qin Emperor's tomb over 2,000 years ago and no-one knew about them.

Now, however art has a twist and mere historical information about the size of a dig is not that exciting.

The curators have solved the problem by combining the warriors with the contemporary work of Chinese artist Cai Guo-Qiang who has been carrying out experiments with gunpowder for 30 years.

You don't actually see the gunpowder in action, although a group of gallery members was present at a Williamstown warehouse when the artist lay fuse lines over his large painted and sculpted works then ignited them.

The explosive patterns have created visual texture, which serves as a metaphor for

ideas of impermanence, in contrast to the longevity of the Imperial warrior caste.

Several installations explore this theme but the most memorable is the flock of starlings. That's when the contrast recedes for it is pretty clear that Cai Guo-Qiang has similar interests to the Qin dynasty: how is group mentality manifest in form?

The starlings have been superbly cast in porcelain in various poses then blacked with gun powder remains and suspended from the ceiling in a flock that demonstrates the power of synchronicity.

A group of workers tied fishing line to more than 1,000 birds so they could be tilted at the right angle and their wings are beautifully represented, as are their eyes and beaks.

A closer look at the warriors shows their own synchronous markings, the slight bunch

to the shoulders, curled hands and low slung belts of the unarmoured infantrymen, the larger size of the general, a thumbs up gesture in a kneeling archer.

The warriors were made out of soft clay that was pressed into moulds for the various body parts then assembled. They were then fired in a big furnace at 1000 degrees centigrade but the furnaces have never been found.

Even though the site in Lintang Province has yielded 2,000 warriors from reassembled fragments only a small percentage has been evacuated.

Terracotta Warriors and Cai Guo-Qiang is on at the NGV until October 13. [ngv.vic.gov.au](http://ngv.vic.gov.au)



## DISPOSABLE

# Science meets art

By Sakshi Agrawal

Southbank's Testing Grounds will be filled with pop-up installations in August as part of the Science Gallery Melbourne's (SGM) third season of its public interactive art and science series.

Returning for its third season, this year's topic will be *DISPOSABLE: Reimagining your waste*. Presented as a mini-festival, it will feature a range of art and science pop-up installations, events, exhibits and experiments focusing on creative and innovative solutions to our war on waste and the ever-growing culture of excess.

"From consumer culture, fast fashion, single use plastics and ways to recycle human waste, *DISPOSABLE* will delve into our garbage bins and human digestive systems to unwrap solutions to the often-overwhelming challenge of what to do with our waste," SGM director Rose Hiscock said.

Some of the highlights are *Urinotron*, which turns human urine into a sustainable power source and *Trash Robot*, which is a remote-controlled garbage collector.

*DISPOSABLE* will also showcase works at University of Melbourne's Parkville Campus and the Footscray Community Arts Centre.

Disposable will run from 1 August to 31 August. Stay tuned for more details on the event in our next edition.

[melbourne.sciencegallery.com](http://melbourne.sciencegallery.com)

Critic



# We can be heroes

Rhonda Dredge

Love doesn't have a chance in the abstract halls of New York where disenchanting beings try and enthrall each other with their wayward tales.

Thomas Newton is an alien, landed on earth some time ago, who drinks gin in his apartment and dreams of the old galaxy.

I'm in danger. I'm so high. He's stuck on earth without a means of return.

Newton, played by Chris Ryan, is an attractive fellow in the flesh, prone in his pyjamas in various states of disarray beneath a blue moon.

Several young women want to rescue him but they, too, have their loads. Youth and beauty are not enough to get them through.

This wonderful dystopian musical plays out through the songs of David Bowie in a moving tribute to the great prophet of alienation.

It's as if you haven't lived unless you have suffered and understood how puny life is in the grand scheme of things.

Bowie died in January 2016 and *Lazarus*, on at the Playhouse, was his last musical,

based on the novel *The man who fell to earth* by Walter Tevis. It premiered in New York in December 2015.

Bowie had acted in the movie adaptation of the novel and wanted to bring it to the stage. He approached script writer Enda Walsh with a four-page synopsis which included three more characters, including Girl, a mass murderer Valentine and a character based on Emma Lazarus, an American poet.

"His lyrics often arrive cut-up and opaque," wrote Walsh. "It was rarely about listening to the words and sticking it into the story. It was about the emotion, rhythm and atmosphere of those songs."

And how wonderfully the director Michael Kantor and set designer Anna Cordingley capture the atmosphere with a two-storey paned window in the centre of the stage that variously excludes and includes action beyond Newton's apartment.

Sometimes the window serves as a screen when scenes from outside New York's grimy streets are displayed, mostly fragmented glimpses of a planet in overload.

Intimate moments are difficult to support in this crossfire of interplanetary influences. A gang mentality prospers in the culture and something as simple as a job comes fraught with personal jealousies and pining.

Elly, played by Phoebe Panaretos, is Newton's assistant. I need to do something

with my life. I have a shitty personality. Elly gets involved in a plot to rehabilitate Newton by emulating his lost love, Marylou, somewhere or other on a planet far away with his child. Hello Marylou. Goodbye heart.

Characters are caught between worlds or pass like ships in the night. We spoke upon the stairs. This is a story about separation from loved ones and self.

Girl, a child woman, perhaps Newton's daughter, has been lying in a grave with her eyes open, unable to die. We never lost control. Oh no, not me. I never lost control. The man who sold the world.

Some pedants are critical of the musical as a form because it can use a weak story line to link songs. But this is not the case with *Lazarus*, which manages to squeeze in 18 Bowie songs, sung in Bowie style with a seven piece band visible through the glass.

The lyrics of the songs intertwine with the script and dancers with pink tassels bounce around the stage until they all cross over each other in the finale when Newton takes off in his imaginary rocket. New York might be edgy but it does have a soul. We can be heroes just for one day.

*Lazarus*, The Production Company, Playhouse, until June 9.

[Artscentremelbourne.com.au](http://Artscentremelbourne.com.au)

## COMING UP IN JULY



JOSEPH TAWADROS QUARTET  
Thu 4 Jul 7.30pm

Multi-instrumentalist and virtuosic exponent of the oud Joseph Tawadros has dazzled audiences for decades with his intoxicating energy and fluid inventiveness. Hear Tawadros fuse Arabic, folk and jazz in a quartet featuring his brother, prodigious percussionist James Tawadros.



THE BARBER OF SEVILLE  
Fri 12 Jul 11.30am

Especially for kids and families, experience Rossini's ever-popular opera *The Barber of Seville* sung in English. Secret letters, clever disguises and all sorts of confusions delight audiences as the boy gets the girl - and the barber gets paid!



STEPHEN KOVACEVICH  
Wed 17 Jul 7.30pm

Kovacevich is the ultimate master craftsman. Performing with integrity and beauty - products of experience, wisdom and heart. An eminent artist, and giant in the piano world, Kovacevich makes his Recital Centre debut performing a masterful program of J.S. Bach, Beethoven and Schubert.

10  
years of  
great music

MELBOURNE  
RECITAL  
CENTRE

TO BOOK: 9699 3333  
[melbournerecital.com.au](http://melbournerecital.com.au)

CNR SOUTHBANK BLVD &  
STURT ST, SOUTHBANK

[f](https://www.facebook.com/melbrecital) [i](https://www.instagram.com/melbrecital) [t](https://www.tumblr.com/melbrecital) [y](https://www.youtube.com/melbrecital) #melbrecital

PRINCIPAL GOVERNMENT PARTNER

CREATIVE VICTORIA





GEORGE POULAKIS

# Both sides of the lens

By David Schout

Already an experienced photographer, George Poulakis had no real intention of completing a course at Photography Studies College (PSC) when he commenced it some five years ago.



Image from the *The Stranger*. *The Stranger* is a contemporary graphic novel produced by George Poulakis.



Selected work from George's *Bodyscapes* collection.

And after a creatively fulfilling period at PSC, he took a break from study for a number of different commercial opportunities, with his advanced diploma of photography still unfinished.

But eventually, he says, he was "drawn back" and kicked off where he left off. "I went off to the big bad world but loved it so much so came back to complete the

course," he explained to *Southbank Local News*.

"It's such a great environment with inspiring people who are constantly bouncing ideas of each other. It's actually tough to keep creatively motivated outside and keeping up the momentum."

The photography freelancer will graduate in a month and - among a number of other

roles in the industry - now does some teaching at PSC.

As a photographer of some 15 years, George has worked across a broad spectrum in the field.

From more commercial ventures in graduation and wedding shoots, all the way to fine art photography, he knows the industry well. He also knows the difficulty in switching between the two.

"Coming from a commercial background, everything needs to be perfect," he said. "But as an artist, it's a completely different world."

Switching from the precise world of real estate photography, for example, to using blur in more creative expressions, was difficult.

"Letting go of that took some time, but I'm glad I embraced it and pleased to see where it's taking me now."

George specialises in self-portraiture; a space he feels he can express himself best. His work varies from the dark and brooding to the humorous and absurd.

"It kind of started out of necessity," he explained. "I'm constantly up at 3-4am with my mind racing, and it sort of grew from that to begin looking at concepts of the self."

The preference of working with and by himself eventually shone through.

"I'm quite a fun and energetic person, but then in the studio I'm quite introverted. I've worked with models before but it doesn't feel as intimate as when it's just me. I'm used to knowing how to work with myself."

Alongside some teaching at PSC, he also runs private "iPhoneography" tutorials teaching people how to use their everyday devices to take stunning snaps.

The workshops show users how to get the most out of their smartphones, and reveals handy features that the average person isn't aware of.

George said the idea began organically. "When I travel, it's too much effort to take all my equipment," he said.

"Four or five years ago I travelled to Italy just with a phone and everyone was saying how good some of my images were. So I just started developing the course while on that trip. It developed itself, really. It's basically about letting people know features on the phone that they don't know of, and getting the most out of their camera. They've got all this software on the phone at disposal!"

[georgepoulakis.com.au](http://georgepoulakis.com.au)



Robyr Williams



The winter chill is upon us! Embrace it by taking some stunning photos for your home or portfolio. Snowy scenes, log fires, foggy mornings, scarves and beanies. Master your camera like a pro. Part Time courses commencing June 28. Enjoy some "me time" away from the rat race!

All ages and skill levels welcome | Full time Part time | Study day or evening

Book a personal college tour:

<https://www.psc.edu.au/about-us/contact-us>

MASTERS | DEGREES | DIPLOMAS | CERTIFICATES SHORT COURSES

Find out more

[PSC.EDU.AU](http://PSC.EDU.AU) +613 9682 3191



[info@psc.edu.au](mailto:info@psc.edu.au) | 65 City Road, Southbank VIC 3006



## On vulnerability and doubt

By Sarah Bartlett

ACCA's winter season exhibition returns to Southbank in June and will feature the works of many Australian and international artists to captivate your interest.

ACCA presents *On Vulnerability and Doubt*, which will explore questions of modesty and desire, as well as awkwardness and love, through diverse artistic mediums such as painting, sculpture, printmaking and video.

ACCA artistic director Max Delany said that the exhibit would look into the intricacies that come with an artist displaying themselves and their work to the public.

"This ranges from the acclaimed shrouded figures of poverty in Andrea Büttner's woodcuts to the delicious sense of irreverence and the grotesque paintings

and animations of Tala Madani, alongside Cherine Fahd's photographic depictions of personal fears in public spaces," Mr Delany said.

The exhibit this year is featuring new commissions together with noteworthy existing projects. The exhibit explores role of Doubting Thomas and the art will also engage with the roles of humour, "the minor" and "otherwise" in relation to figures of authority.

*On Vulnerability and Doubt* is curated by Max Delany and will feature the works of Australian and international artists including Andrea Büttner, Cherine Fahd, Brent Harris, Tala Madani, Lisa Marrinon, Archie Moore, Charlie Sofo and Ambera Wellmann.

ACCA's winter season each year has a unique conceptual and stylistic focus. This year the exhibit is developed by ACCA's curatorial team, and by guest curators, to focus on the new developments and trends in contemporary art from around the world.

*On Vulnerability and Doubt* will run from June 29 until September 1 at ACCA.

[acca.melbourne](http://acca.melbourne)

# Spooky men

By Sarah Bartlett

The Melbourne Recital Centre (MRC) is celebrating its 19th year of making music and is releasing a humorous and tenderhearted choral performance in commemoration this month.

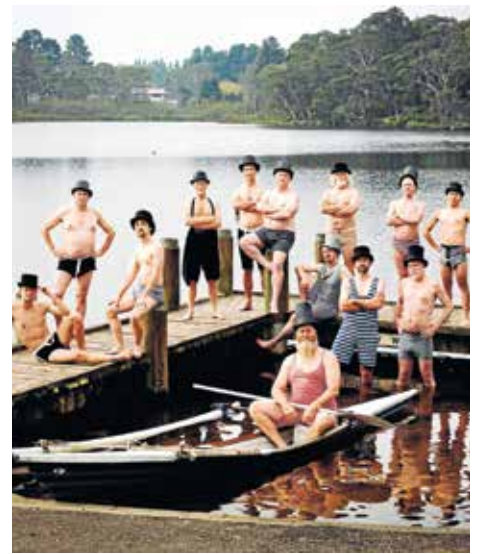
MRC presents *The Spooky Men's Chorale*, a show by an Australian male choir group that mixes comedy with acapella harmonies. The group has had vast experience with over 680 gigs since 2001 to an audience of over 280,000 people. The Spooky Men's Chorale formed in the Blue Mountains of NSW by "spookmeister" Stephen Taberner and is made up of 15 male singers. They have enjoyed success at the folk festival scene and have toured at noteworthy festivals in the U.K and Europe.

The chorale will perform a combination of Georgian table songs, ballads, and lighthearted anthems such as *Don't stand between a man and his tool*.

The performance will also feature songs from the Chorale's latest studio album *Welcome to the Second Half*.

Mr Taberner said that the latest album explored deeper topics but still contained their trademark humor.

"The Spooky Men's Chorale - your fearless investigators into all things physical, metaphysical, and cheese-related - is returning to inspire your ear-things



with a collection of new harmonies, man-chords and grand buffoonery," Mr Taberner said.

*The Spooky Men's Chorale* will run on June 20 at 7:30pm at the Elisabeth Murdoch Hall.

[melbournerecital.com.au](http://melbournerecital.com.au)

## Welsh Choir comes to Southbank

The Melbourne Welsh Male Choir will mark the winter solstice on Saturday, June 22 by teaming up with Silvie Paladino and Roy Best in a concert at the Melbourne Recital Centre.

The choir's musical director David Ashton-Smith OAM said that winter solstice was traditionally associated with ceremonies celebrating regeneration, renewal and the rebirth of the sun.

"But you don't have to go to Stonehenge to mark this natural phenomenon. Just join us at the Recital Centre for an afternoon of

uplifting music that offers hope and joy. Songs such as *You Raise Me Up* do raise us up. Music keeps the choir young; it keeps us all young," he said.

Mr Ashton-Smith said that the choir was delighted to be returning to the Recital Centre.

"The Recital Centre is one of our favourite performing spaces. Its magnificent acoustics mean that the Melbourne Welsh Male Choir can perform without amplification - the result is a much richer, much more compelling sound. Silvie Paladino's soaring voice and Roy Best's dynamic tenor are a perfect complement to the choir's four-part harmonies," he said.

Paladino is best-known (and perhaps best-loved) for her regular performances at *Carols by Candlelight*. She performed

in London in *Les Misérables* for two years, played the lead role of Donna in the smash hit *Mamma Mia!* throughout Australia and Asia, and performed in *The King and I* in 2010, in *Chess* in 2012, and *Jerry's Girls* in 2015.

Roy Best established his singing career in spectacular fashion after successfully competing in ABC television's *Operatunity Oz*. He performed the role of the Duke in Opera Australia's *Rigoletto* at the Sydney Opera House and was rewarded with a standing ovation from a packed house and a television audience of over one million viewers.

The concert repertoire will include favourites from musical theatre (in several different languages), traditional choral pieces, and an array of songs that the choir



sings best, including Welsh standards *Sing Rhondda*, *Calon Lân* and *Ysbryd y Nos*. Paladino and Best will give individual performances, team up for songs in Italian and then join the choir in singing the popular Neapolitan song, *O Sole Mio*.

The choir will perform at Melbourne Recital Centre at 2pm, June 22. For tickets and more information visit:

[melbournerecital.com.au](http://melbournerecital.com.au)



## Rich Indulgence Cabin ...what a sweet thing!

This winter, relax, sit back and enjoy the pleasures of life! Take in the panoramic views while sipping on a drink of your choice and devouring delicious chocolates in the warmth of your private Rich Indulgence Cabin. From only \$35 per person for a limited time only.\*

BOOK ONLINE TODAY  
[melbournestar.com](http://melbournestar.com)



MELBOURNE STAR  
OBSERVATION WHEEL

\*See [melbournestar.com](http://melbournestar.com) for full terms and conditions.





## ANGELA TIATIA

**Until June 29 - Margaret Lawrence Gallery**  
Angela Tiatia's compelling video *The Fall* draws from oral and written accounts of the survivors of the fall of Singapore in February of 1942. Commissioned by The Australian War Memorial and The National Museum of Singapore, Tiatia was asked to respond to the Battle of Singapore, a military retreat described by Winston Churchill as "the worst disaster" in British history.  
[mlg.finearts-music.unimelb.edu.au](http://mlg.finearts-music.unimelb.edu.au)



## BLAQUE SHOWGIRLS

**June 21 - July 14 - Beckett Theatre**  
The entire world of *Wake in Fright* is conjured in a one-person show by the always-evocative Zahra Newman (*The Book of Mormon*) accompanied by a sonic assault from art-electronica band, friendships. Under the direction of Declan Greene, Kenneth Cook's iconic work of Australian Gothic horror is felt in the flesh. Bring sunscreen, buy a beer and wear your ear plugs.  
[malthousetheatre.com.au](http://malthousetheatre.com.au)



## MELBOURNE INTERNATIONAL JAZZ FESTIVAL

**Until June 9 - Various venues**  
The 2019 Melbourne International Jazz Festival takes place in concert halls, arts venues, jazz clubs and bars throughout the streets of Melbourne as the city comes alive with the spirit of jazz. Showcasing the very best from the international jazz scene, the festival offers a range of free and ticketed events. To see what's still on offer head online.  
[melbournejazz.com](http://melbournejazz.com)



## ALICE'S ADVENTURES IN WONDERLAND

**June 8 - 22 - State Theatre**  
After sell-out seasons in 2017, Christopher Wheeldon's madcap production returns this month. Experience breathtaking visuals from Tony Award-winning designer Bob Crowley and a colourful, cinematic score by Joby Talbot. With all the scale and spectacle of Broadway, this ballet will transport you to the heights of your imagination.  
[australianballet.com.au](http://australianballet.com.au)

## AUSTRALIAN MUSIC VAULT

**Ongoing - Arts Centre Melbourne**  
The Australian Music Vault features a free, immersive exhibition showcasing Australian music, innovative digital participatory experiences and iconic objects from our Australian Performing Arts Collection.  
[australianmusicvault.com.au](http://australianmusicvault.com.au)

## ALEXANDER CALDER: RADICAL INVENTOR

**Until Aug 4 - National Gallery of Victoria**  
*Radical Inventor* presents approximately 100 sculptural and pictorial compositions made by renowned American artist Alexander Calder (1898-1976), drawn from private and museum collections in North America, including a substantial number of works lent by the Calder Foundation, New York.  
[ngv.vic.gov.au](http://ngv.vic.gov.au)

## TOM NICHOLSON: PUBLIC MEETING

**Until June 16 - ACCA**  
Reflecting the complex dynamic between historical traces and speculative futures in Tom Nicholson's drawing, sculptural and social practice, this is the first large-scale exhibition to survey the scope of the artist's practice. Initially trained in drawing, Tom Nicholson is one of the most prominent Australian artists on the international stage.  
[acca.melbourne](http://acca.melbourne)

## NATIONAL ANTHEM AND A NEW ORDER

**Until July 7 - Buxton Contemporary**  
Buxton Contemporary, home to the remarkable Michael Buxton Collections, marks its first birthday with two new exhibitions: *National Anthem* and *A New Order*, running until July. These free exhibitions invite us to scrutinise crucial moments in the recent history of Australian art and the ideas that continue to shape the nation.  
[buxtoncontemporary.com](http://buxtoncontemporary.com)



## HEISENBURG

**Until July 6 - Fairfax Studio**  
At a bustling London train station, 42-year-old American, Georgie, kisses the neck of a much older Irish man, Alex. This electric encounter thrusts two perfect strangers into a fascinating and unlikely relationship, part friendship, part love-affair. But is Georgie really all she seems?  
[mtc.com.au](http://mtc.com.au)



## EPIC: ONE NIGHT ONLY

**June 16 - Hamer Hall**  
Two epic albums, make one epic concert! *EPIC* will be the concert event of 2019 celebrating the new alongside the much loved; it launches Deborah Conway & Willy Zyglis's tenth album, *The Words Of Men* and pairs it with 1993's ARIA Award-winning and gold-selling record, *Bitch Epic*.  
[artscentremelbourne.com.au](http://artscentremelbourne.com.au)



## TCHAIKOVSKY'S VIOLIN CONCERTO

**June 28 - July 1 - Hamer Hall**  
Brilliant young Czech maestro Jakub Hruša returns to the MSO with Dvorák's subtly scored orchestral ballad, *The Wood Dove*, based on a Czech legend of infatuation and murder in a rural village. Ukranian-born Vadim Gluzman is a superb violinist of the Russian school and his interpretation of the beloved Tchaikovsky concerto with its fiery virtuosity and wistful poetry is not to be missed.  
[mso.com.au](http://mso.com.au)



## ABBA-SOLUTELY FABULOUS!

**June 24 - Hamer Hall**  
Award-winning entertainers Rhonda Burchmore OAM and Lara Mulcahy bring their smash hit live concert to *Morning Melodies* at Hamer Hall. Get ready for an explosion of laughs and lycra with your favourite super troupers. Rhonda and Lara will delight audiences with their irresistible humour and spectacular renditions of those unforgettable ABBA songs.  
[artscentremelbourne.com.au](http://artscentremelbourne.com.au)

# SOUNDPROOFING WINDOWS

FOR BODY CORPORATE AND HERITAGE LISTED HOMES AND APARTMENTS



NO NEED TO REPLACE YOUR EXISTING WINDOWS TO ACHIEVE DOUBLE GLAZING

Stop Noise will come to your home for a FREE demonstration and show you how we can reduce noise by up to **70%** coming through your existing windows.

Stop Noise secondary glazing system is equally as good as replacement double glazed windows for your thermal insulation and twice as good for reducing noise. There is simply no better option. Save money on your energy bills and get a great night sleep.

Stop Noise is a trusted family owned and operated Melbourne based business since 1995.

VISIT US ONLINE! [WWW.STOPNOISE.COM.AU](http://WWW.STOPNOISE.COM.AU)

Call today to organise a free assessment of your windows & doors

1800 880 844 [info@stopnoise.com.au](mailto:info@stopnoise.com.au)

Office & Showroom- 15 Industry Blvd, Carrum Downs 3201



# Getting better

By Rhonda Dredge

*Laneway culture is still evolving at Southbank. A narrow passage between two buildings has been fitted with cafes and a few hardy individuals are assessing their options.*

The riverbank is more alluring but on a winter day the winds come in from the port and they're icy.

Two men are making up their minds about lunch.

The men are hipsters with a twist. Their clothes are made of microfibres that repel moisture and wind particles.

Some might call them pioneers. They've learned how to fictionalise their lives and enjoy a bit of drama.

Both are standing outside the Thai café. It has the usual menu. Pad Thai is looking good.

The sun comes out and beams down a lane that points due north towards the river.

On a cold day Southbank has it over the city because of these shafts of light and the men move over to a sunny spot while they wait.



Across the lane is a pho shop. There is a large fire in a metal cone outside, where you can warm the cockles of your heart while waiting. The mood is pleasant. The two diners are supporting each other in their vision.

Two steaming cardboard containers arrive soon after. Perhaps they aren't pioneers after all, even though they feel like it.

A woman approaches wearing a padded thermal jacket from Japan. She nods and smiles as she passes.

Architects have been clever to create some shelter and the sunlight bounces off the nearby towers in pleasing patterns.

# Boost for Town Hall

By Alex Dalziel

*As part of the recent federal budget, former Minister for Communications and the Arts Mitch Fifield has committed to helping restore the South Melbourne Town Hall.*

Before its collapse last year, the heritage South Melbourne Town Hall was home to the Australian National Academy of Music (ANAM).

The budget will see \$12.5 million go toward the restoration and refurbishment of the building, which is expected to cost a total of \$30 million.

"The academy is both an internationally-recognised training institution and a jewel in the community. This funding will secure the academy's vision and place in Melbourne for the next 50 years," Minister Fifield said.

The federal contribution is contingent on matching funding from the Victorian Government. In addition, ANAM has raised \$5 million of its own for the project and has partnered with the City of Port Phillip to complete the restoration.

Directors at ANAM plan to use the money to modernise the venue into a hub for live performances and community and cultural events.



Chair of the ANAM board Ian McRae said: "ANAM is grateful to the Commonwealth Government for joining with us and our other stakeholders to realise our vision for ANAM's future in the South Melbourne Town Hall, and to significantly upgrade the opportunities for community use of this important building."

"The catastrophic events of last October and November brought us to a profound realisation: this beautiful but broken building requires significant financial investment in order to ensure that ANAM may have a home that supports its current spectacular national and international trajectory. With the Commonwealth's commitment, we can now begin to plan."

On October 18 last year, a large section of the roof in the office area of the South Melbourne Town Hall suddenly collapsed, narrowly missing two staff members working at their desks.

This was followed three weeks later by another section of the roof in another part of the building collapsing onto a staff member's workstation, which forced the building's closure.

# Local author inspired by Southbank

By Sarah Bartlett

*Author Margaret Robson Kett moved into her high-rise apartment on Queensbridge Street in 2012.*

Her apartment was located opposite to another apartment that was under construction at the time. She would observe the construction work that was happening outside of her apartment block from her window on the 16<sup>th</sup> floor.

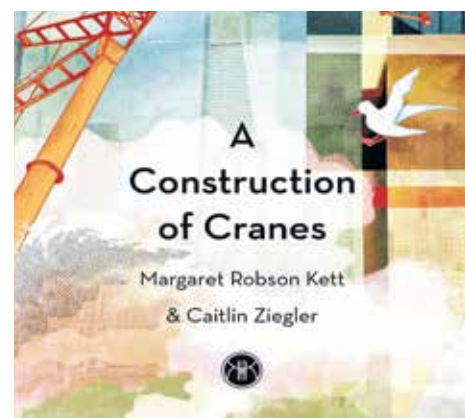
"Level with my window, just four car lanes across, the cab of a tower crane stood at the corner of the buildings skeleton. I noticed that children, like me, looked up from the street, or across from their balcony or window, to see the hook lowering at the end of a cable like a giant fishing line to a waiting truck," Ms Kett said.

Ms Kett decided after many years of buying, reading aloud and recommending picture books to children and parents at libraries, to return to school to study professional writing and editing at RMIT University.

It was here where she met graphic designer Caitlin Ziegler at an editing class. Ms Ziegler specialises in drawing, cutting, pasting, and folding paper cranes. Ms Kett and Ms Ziegler made the decision to enrol together in the subject writing for children. In this subject, they worked on a picture book manuscript, *The Daily Crane Watching*.

Ms Kett used her observation of construction in the Southbank area as inspiration for her picture book.

"A lot of staring out of the window became legitimate research, and trying to work out how cranes worked and grew with the building. Even when I moved one block over, I could find plenty in the neighbourhood to photograph and write



about. When a building right next door to mine was finished and I was able to spend a day watching the crane being dismantled, the simple rhyming text was finally polished to perfection," Ms Kett said.

Ms Ziegler used a variety of both traditional and digital illustration and collage techniques for the book.

"Discarded building plans from a skip even made their way into it," she said. The title, *A Construction of Cranes*, takes its name from the collective noun for the birds, as well as the machines," Ms Ziegler said.

*A Construction of Cranes* is now available to purchase and can be ordered online at [kettlestitchpress.com.au](http://kettlestitchpress.com.au)

# MCEC lights up

By Sakshi Agrawal

*The Melbourne Convention and Exhibition Centre (MCEC) lit up on the night of May 16 as it hosted 550 guests for the Starlight Foundation's Five Chefs Dinner.*

The event raised enough funds to support Starlight Children's foundation's hospital programs at the Royal Children's Hospital and Monash Children's Hospital for four months. In addition, it also granted 15 Starlight children wishes.

The guests were served canapes by MCEC's executive chef Peter Haycroft and a five-course degustation designed by



leading Victorian chefs.

"This is the eighth year we've been involved in the Starlight Five Chefs Dinner and it's always a privilege to be able to support Starlight's programs in Victoria and knowing that every meal we serve contributes towards putting another smile on a sick kid's face," Peter Haycroft said.

Starlight CEO Louise Baxter said that the dinner played a significant role in the hospital program.

[starlightfivechefs.org.au](http://starlightfivechefs.org.au)

# Vantage points

By Meg Hill

On one of the walls of the new South Melbourne “vertical” primary school in Southbank sits a massive two-by-three metre painting of Albert Park lake.

The bean-shaped lake rests next to Queens Lane, painted as if a long exposure shot of busy traffic heading to-and-from the city. To the far left are ships floating in Port Phillip Bay.

It’s a lofty piece, more than three times bigger than its creator planned.

“I originally asked for a canvas two-by-three feet, and they came back with this massive thing,” said artist Arthur “Ted” Powell.

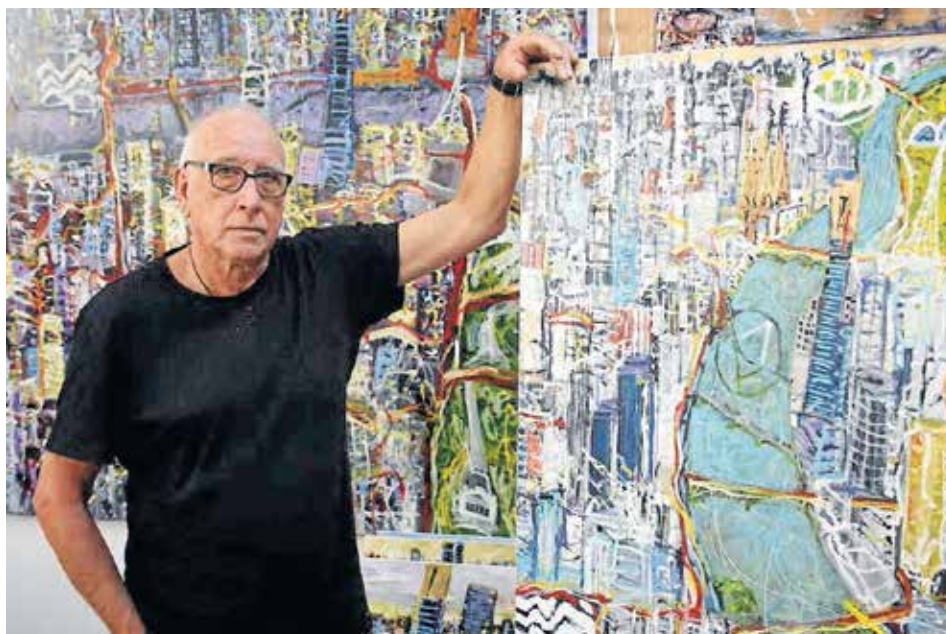
The painting did fit in Ted’s apartment at the time, when he was living overseas, but not when he moved back to his house in South Melbourne.

It sat in storage for years until it was eventually homed at the primary school.

The lake, the sea, shore and the city in the background are painted from above.

Lots of his paintings, which over the past decade have focused largely on the development of Southbank and the city, are painted from above their subjects.

But all his sketches are drawn from the



ground. Ted doesn’t use photographic reference either.

He prolifically creates panoramic sketches, absorbing visual information about an environment and the way it’s arranged. This allows him to “put the sketches away” and paint from that memory – even from a vantage point he’s never physically occupied.

He began sketching while working overseas in advertising, rediscovering his art school self from years before. His first job, long before his career in advertising, was working part-time on the animated Beatles’ movie *Yellow Submarine*.

“Rather than going out and eating every

night I made my own little post-cards with watercolours and painted them and sent them to my family,” he said.

“That progressed into sketch books, wherever I was and if we were filming TV commercials or something, in the downtime I’d spend scribbling in sketchbooks and filling those up.”

Now, some of his panoramic sketchbooks are held by the State Library’s rare book collection, and by the City of Melbourne and Port Phillip councils.

The perceptive lens into detail of development comes not only from Ted’s knack for moving around perspectives, but

the fact that he’s lived in South Melbourne, in the same house, for over 40 years – with a decade long interval to work overseas.

“When we bought it wasn’t very popular to live in South Melbourne, there was a lot of derelict buildings,” he said.

“The house we bought had a demolition order on it and we renovated it and spent a lot of time putting it back together.”

“It was built in 1884 originally and a cow shed at the back of the property ran as a dairy.”

The prolific sketching habits mean Ted can put together a show on any kind of landscape if he’s had a chance to sketch it. Two years ago, his *Australia Rocks* showcased volcanic rock formations in rural Victoria.

But there’s a level of critical reflection in tracing cumulative man-made development.

“I’ve always had an interest in architecture since art school, so I guess there was that distant relationship with architecture even though I get sort of frustrated with what’s happening and some buildings that aren’t very interesting,” he said.

A few years ago, Ted had a show on the Eureka Tower, which he has a “personal interest” in.

“The design of the tower is based on the Eureka Stockade. The surveyor’s measure gives you the window structure.”

“The gold glass at the top is a reference to the Eureka gold fields and the red stripe is a symbol for the blood that was lost.”

“It gives the building a whole different story. Most of them are just glass boxes.”

## Montague Community Alliance

# Montague – an agreeable neighbourhood?

Agreeable definition: If something is agreeable, it is pleasant and you enjoy it.

I was thinking about the definition of this word as it related to agreements. If we, in the Montague Precinct of South Melbourne are already an agreeable neighbourhood, one that is pleasant and enjoyable, how do you create neighbourhood agreements that integrate new neighbours, both residential and businesses, with those already enjoying the area? How do we create a relationship with developers and builders that could be considered agreeable?

The reason I pose this question is that recently, in an informal discussion with a senior state planner about the uniqueness of developing the Montague Precinct, this point arose. How do governments and councils engage with existing residents and businesses who were in place before the change of zoning to a Capital City Zone occurred, and life as they knew it changed? It turns about to be a dilemma for both council and state planners, as apparently, there is little or no precedence or reference for this type of integration either in Victoria or other parts of the country. Particularly as these neighbourhoods already have a community

culture that would need to change as new people arrived into the neighbourhoods.

This column is often about all the things that are problematic with living and working in Montague and the challenges faced from the huge influx of new people arriving here. However, before you think we’re just being nimbies, let’s examine all the great things we already have that are agreeable:

- We are a close-knit community. E.g. those of us who have lived here – precinct wide – before 2012 (the legacy community), know the names of the operators of the small businesses. We know where people need to park to assist them with their children, or elderly relatives. And we try very hard not to disrupt anyone.
- We have a strong connection with our neighbours across the road in Port Melbourne. We know the names of their dogs!
- We are walking distance to the South Melbourne Market, surrounded by public transport and only a couple of tram stops from the city and the beach.
- There is no doubt about it: we have a fabulous location with lots of open space and bike tracks.
- We are also mindful of the history of the area and we have the lived experience of that history in the hearts and minds of the existing communities. We are proud of that.

Interestingly very few of the legacy residents have left the area, I can only think of one family, but they only moved across City Rd to another part of South Melbourne.

We love our Montague Precinct. We don’t want to be anywhere else and there is virtually no one (okay, maybe one or two) who don’t understand that. Yes, we will be developed, and many, many more residents and businesses will move in. And yes, we also understand that new residents and businesses don’t know about us or the history of the area and that, from time to time, might create challenges. Indeed, I’m sure some Montague newbies (post 2012) will not understand why I write this column, or why we even have a community group.

The reason is that I write it on behalf of the Montague Community Alliance because we believe it is incumbent on all of us, the new and the legacy communities, to create an agreeable neighbourhood.

The legacy community needs to accept that we do have building works on our doorsteps. And that we will have businesses that don’t realise there is a two-year old, or a resident with the flu, or that their weekend cleaners and workmen are a challenge for those residents needing downtime on the weekends. And we would hope in time, that they (the post-2012 businesses), know as they leave at the end of their business day and go to their homes, that we need quiet

enjoyment of our homes too.

I am not sure we can blame them for not really paying attention to how many of us live here but we can hope that maybe we can change their mindset in the future. Montague was an agreeable, community-minded village when we moved in. I so look forward to the day, somewhere in the future, that another resident and business owner can write the same thing.

Change is always difficult especially to those who have no control (or third-party rights) over their living or working environments. I hope that we can all work together with warmth and thoughtfulness, to create the very thing that I am sure we all want – for Montague to be an agreeable neighbourhood.

Thank you for reading this. As usual, if you have any ideas or want to offer any feedback to us, we have a twitter account @MontComAlliance and a Facebook page @MontaguePrecinct, or you can contact me at [trishavery@me.com](mailto:trishavery@me.com)



**Trisha Avery**

Trisha Avery is the convener of the Montague Community Alliance.  
[trishavery@bpca.com.au](mailto:trishavery@bpca.com.au)



# Live more at The Evermore

Perfectly wedged in the heart of Southbank Village, within walking distance to the Arts Precinct, Royal Botanic Gardens, South Melbourne Market and Albert Park Lake, The Evermore offers residents the very best of what Melbourne has to offer.



Nestled between the growing Domain Precinct and Southbank's low-rise community at 58-66 Dorcas St, Southbank, construction is well underway on the new 24-storey twin tower development which is due for completion later this year.

Developed by Landence Group, The Evermore has been designed by renowned architects Hayball to be timeless in both architecture and interior design. Offering spacious one-, two- and three-bedroom homes in a safe and convenient location, it offers a rare lifestyle which is unique to Melbourne.

Located within a well-established, strong local community, the area is also well serviced by great connectivity to public transport. Walking distance from St Kilda Rd, in 2025, the neighbourhood will also be

within a stone's throw from the new Anzac Metro Station which is currently under construction at the Domain Interchange.

The residential towers will maximise views and minimise the number of south-facing apartments. The Evermore employs good design sense as is evident with abundant air reticulation, direct light and clever planning. Expansive balconies and vertical shading address the harsh western sun while also optimising blockbuster views over Port Phillip Bay, Melbourne's CBD and the Royal Botanic Gardens.

Channelling exemplary design inspired by 6-star resorts and luxury hotels, The Evermore is focused on the resident's experience in the public and private spaces throughout the building.

The anything-but-common Evermore common areas will treat residents with

exemplary experiences.

A total of 1446 sqm has been allocated to create a world of recreation, relaxation and indulgence at The Evermore with residents being able to select a world of facilities over and above the beauty of their apartments – such as the 14.5m open-air pool with sun lounges and cabanas to a high-tech gymnasium, study, library, lounge and even a gold-class cinema.

Residents will impress loved ones in the exclusive and lavish private dining rooms surrounded by elegantly-crafted furnishings and plush interiors.

A rich use of natural materiality is evident throughout The Evermore's interiors. The kitchen features natural stone, timber and copious storage, with the latest Miele appliances. The bathrooms are capacious with brass tapware and timber floors grace

the living areas with warm, woollen carpets in the bedrooms.

Apartments in The Evermore have been designed around the idea of a sophisticated retreat, with a refined material palette and optional dark or light colour schemes that invite residents to add their own personality and touches.

Last, but certainly not least, The Evermore is interspersed with lush tropical gardens and is landscaped with flourishing fronds and foliage to soften the space and calm the soul.

The display suite is open every day, located at 95 Coventry St and a display apartment is available to view by appointment.

For all other enquiries visit [theevermore.com.au](http://theevermore.com.au) or call 1300 383 766.

# Better lives through stronger bones

A new South Melbourne business is promising better health through a simple way to grow bone density.

OsteoStrong, at 378 Clarendon St, is the first Australian franchise of a business which started in the US and has spread to Europe.

The system safely put bones and joints under a proper amount of pressure and more than can be achieved by other means, such as running, jumping or jogging.

According to Franchisee and director Wutti Oparkcharoen, research shows that we need to apply load equivalent to 4.2 times our body weight to trigger bone growth in the hip and femur.

This means that a 60kg person would need to apply force equivalent to about 250kg through the lower body and this cannot be safely achieved in typical modalities such as weight bearing exercise or jogging.

Mr Oparkcharoen told *Southbank Local News* members could increase their bone density through a single 10-minute supervised session each week.

"There's nothing else like this out there," he said. "There's no sweat, there's no pain, you can come in your normal clothes and minimum effort gives maximum results."

Four proprietary, robotic musculoskeletal development machines are at the heart of OsteoStrong. One is for upper skeleton, one for lower (femur and hip), one for core (upper pelvis and lower rib cage) and one machine for postural and spine.

The machines are designed to allow members to safely exert pressure on different parts of the skeleton and were invented by



OsteoStrong owner Wutti Oparkcharoen with staff members Shannon and Andrew at the Clarendon St business.

biomechanical expert, Dr John Jaquish, who became interested in bone density after his mother developed osteoporosis.

He observed that gymnasts had the strongest bones of any athletes, although too much stress on their joints often meant an early retirement from competitive sport.

"So he invented these machines to emulate such impacts, but without the risks that come with it," Mr Oparkcharoen said. "That's why we call it a high-impact emulation and it triggers osteogenesis or bone building."

He said OsteoStrong internationally worked with members ranging from 10 to 95 years old.

But, he said, some 90 per cent OsteoStrong members renewed their memberships year after year because it works and because it is easily accommodated into their busy lifestyles.

"Most people don't know that after the age of 30, you start to lose 1 to 2 per cent of bone density per year and up to 5 per cent per year for women during menopause. We now know that your central nervous system will not allow you to have a muscle strength that your skeleton cannot handle," Wutti said.

"As we get older, and our skeletal system becomes weaker, our muscles also become weaker."

"Because your central nervous system is a smart engineering team, it is trying to protect you. You cannot have too much muscle strength that your bones can't handle. A good analogy would be that you can't put a Ferrari motor engine in a Corolla because it would shatter the chassis."

"We've always accepted that we are going to get weaker as we get older but now, with this new OsteoStrong technology, it is the first time in human history that you can

choose not to accept that growing older means growing weaker. You can choose to continue doing what you love and maintain the independence."

Mr Oparkcharoen also said OsteoStrong helped with balance, joint and back pain as well as long term blood glucose (HbA1c).

"What we do at OsteoStrong is increase muscle density, rather than the size. When you have more muscle density, it allows your body to process blood glucose better."

"Research shows that when joints are subject to compressive loads, tendon and ligament become stronger. Members from overseas living with joint pain such as osteoarthritis have reported that they had substantially reduced or eliminated pain."

He said OsteoStrong helped professional athletes by increasing strength, power, agility, balance as well as injury risk reduction through stronger bones and joints.

"Locally, we work with professional athletes such as Taylor Adams from Collingwood AFL and Natalie Medhurst from the Magpie Netball club," he said.

OsteoStrong South Melbourne opened on May 29 and Wutti and his staff are offering Southbank Local News readers a complimentary first session, which includes a bone density scan.

378 Clarendon St, South Melbourne.  
Phone: 7004 1284 Email: [sthmelb@osteoststrong.com.au](mailto:sthmelb@osteoststrong.com.au) Web: [osteoststrong.com.au](http://osteoststrong.com.au)

## Business



Images from Ray White Southbank | Port Phillip's In-Room Auction night on Saturday, May 29.

## Inner-city auction specialists

At a time when some inner-city real estate agencies are shy of conducting auctions for apartments, Ray White Southbank | Port Phillip has just cleared 100 per cent of its auction stock in the last two months.

Principal Andrew Salvo said most agents were fearful when listing apartments for auction as they believed units were not traditionally sold this way.

"Open for inspections can be a lonely 30 minutes and an onsite auction can be awkward and embarrassing when the auctioneer is calling the auction to very few people. Other people believe that inner city apartment auctions lack atmosphere," Mr Salvo said.

But not this office. Not only did this Ray White office sell 100 per cent of its auction stock over the past two months – some 16 units for a combined sales total of \$8,448,333 – they can boast an average days-on-market of 27.5 days.

Speaking of his group's auctions held at their office at 111 Clarendon Street, Mr Salvo said auctioneering via an in-room style was the secret to their success.

"The auction process cuts through the awkwardness. It is a fun night with multiple auctions and a full room of people. There is genuine tension and mystery in the air. That's the atmosphere that successful auctions need," he said.

"We get so much efficiency out of this process as we can fully utilise weekends to get as many people through properties as possible. We simply have more time to prepare buyers on weekends so they can purchase property mid-week."

"When it comes around to our usual Wednesday or Thursday evening time slot, the whole business is geared up for a fun night of auctioning properties. We have our salespeople, administrators, receptionists and property managers trained and on deck ready to help."

"This creates tremendous support that we wouldn't be able to leverage from on weekends without having to pull resources away from showing properties and assisting buyers."

Earlier this year on February 27, the Ray White Southbank | Port Phillip hosted its first in-room auction, which saw three sales

completed under the hammer, with four more selling just prior to clear seven from eight units in one night.

Mr Salvo said that the energy generated from the style of auctioning was "truly amazing" with the company wide effort of getting deals done helping to ease the pressure on individual agents.

He said the support and confidence created a culture where his team was prepared to challenge itself and push the boundaries in a traditionally difficult marketplace.

Ray White Victoria and Tasmania CEO Stephen Dullens congratulated Ray White Southbank | Port Phillip on their fantastic results for their vendors.

"Across Victoria, Ray White consistently call more than 20 per cent of the auctions in the state," Mr Dullens said. "We invest significant time and resources to ensure this process is as successful as possible, where we know that a strong auction campaign will result in lower days on market and stronger results for our vendors."

### Apartment Collective Auction Event at Ray White Southbank | Port Phillip

The Apartment Collective Auction Event, to be held on June 20, is the first of its kind.

See several Ray White businesses located in capital city markets across Australia and New Zealand collectively focus on apartment sales in one international campaign.

This event is being launched following the huge success of the in-room auctions that Ray White Southbank | Port Phillip have been running in recent months.

The night is an opportunity for savvy buyers to bid confidently in an open and transparent environment surrounded by astute vendors ready to sell.

Thanks to Gavl, you can also watch and bid for these properties online. For more information contact Andrew Salvo.

[raywhitesouthbank.com.au](http://raywhitesouthbank.com.au)

## Season's Harvest at The Langham

It's widely regarded that fresh is best. The Langham Melbourne's Melba Restaurant here in Southbank has introduced *Season's Harvest* at breakfast, lunch and dinner.

*Season's Harvest* shares with diners where what they are about to eat comes from.

"We're thrilled to announce that 70 per cent of produce served at Melba Restaurant is from Victoria. From basil from a farm in Bendigo to tuna that swam off the shores of Portland to honey from Beechworth to cheese made just 45 minutes away in the Yarra Valley, Melba Restaurant is sharing with guests the provenance of the restaurant's hero ingredients," The Langham Melbourne's director of food and beverage Anthony Ross explained.

"Our guests are astute diners from around the globe. The Langham Melbourne hosted over 25,000 guests from overseas in 2018. *Season's Harvest* is the perfect platform to showcase Victoria's local produce and sensational beef, fish and fruit from interstate," The Langham Melbourne's managing director Andrew Jessop added.

"In 2018, Melba Restaurant served over 200,000 meals. We felt that it was time to share with our guests where our ingredients come from. Our chefs have enjoyed meeting with local farmers, fishermen, cheese-makers and bakers and finding ways we can work together."

"Diners will be able to see where many of the ingredients come from by reading the labels at Melba's open kitchen and all of Melba's team members have learned where ingredients are grown or reared and are able to talk to diners about different areas of Victoria."

Anthony Ross said he hoped local and international diners would enjoy learning more about how Melba Restaurant was committed to a "fresh is best" and "local wherever possible commitment."

For instance, B&B Basil, located 133km away, supplies the hotel with basil and fresh edible flowers. Meanwhile, Hawkes Farm, located an hour and 20-minute drive (67km away), supplies Melba Restaurant with potatoes, Dutch carrots, beetroot, spring onions, parsley and strawberries and corn when in season.

Hawkes Farm is not only a supplier to five-star hotels. It is also open to the public (seven days a week, 8am to 5pm) and hosts farm tours where visitors can pick their own produce. More information is available at [hawkesfarm.com.au](http://hawkesfarm.com.au)

Melba Restaurant's antipasto table is a magnet for those who love cured meats and cheese.

All of the hotel's charcuterie, including prosciutto, mortadella and salami comes from a local supplier in Daylesford.

As well as organic French-style cheese from L'Artisan Cheese, Persian-style feta from Yarra Valley Dairy, tomatoes from Bacchus Marsh, clover-fed Angus beef from O'Connors Farms in Pakenham or Birchley



free-range pork belly from near Mt Mercer, every ingredient has a story to tell.

And the same goes for seafood! Port Phillip Bay provides an abundance of mussels, snapper and scallops throughout the season while blue swimmer crab comes from Westernport Bay, bluefin tuna from Portland, pippies from Venus Bay and Hiramasa kingfish from Port Fairy.

It's not just edible produce that has a Victorian focus at Melba Restaurant. The popular dining venue's wine list shines a light on local Victorian wine and local mineral water from Hepburn Springs.

Melba Restaurant is open every day for breakfast (from \$49.00 per person), lunch (from \$67.00 per person) and dinner (from \$97.00 per person).

Children under the age of three dine for free, seniors enjoy a discount and children aged between four and 12 dine for half the price making Melba Restaurant an ideal choice for families.

Breakfast includes juices made-to-order, eggs made-to-order, fruit, pastries, Asian dishes, yogurt, waffles and more. Lunch and dinner includes a crustacean bar, a sushi and sashimi station, an antipasto table, roast dishes, Indian curries, dumplings, stir-fries, steaks and pasta dishes all made to order from Melba Restaurant's grill and wok section plus incredible Indian dishes and more.

And there's a chocolate fountain, dessert showcase, ice cream and plenty of Victorian cheese!

Melba is ideal for groups and can cater for up to 240 guests at a time.

The restaurant is popular for families as there is always something for everyone, even the fussiest of eaters.

Bookings can be made by visiting [melbarestaurant.com.au](http://melbarestaurant.com.au), contacting [tlmelrestres@langhamhotels.com](mailto:tlmelrestres@langhamhotels.com) or by calling **1800 641 107**.

[@melbarestaurant](https://www.instagram.com/melbarestaurant) #MelbaHarvest @langhammelbourne

St Johns Southgate

# Loosen up!

A few months ago, I officiated at a wedding at St Johns Southgate.

It was a ceremony full of warmth, love and even a few laughs. The couple looked stunningly beautiful and didn't break from their smiles the whole afternoon - except to shed the odd tear.

There was a really relaxed atmosphere, but afterwards, once everyone had gone and I'd finished packing things up, I found myself in a panic.

I'd been invited to attend the reception, so I needed to quickly finish up at the church then catch up with the guests to be at the venue before the happy couple arrived. Ordinarily, I would have had plenty of time, but this wedding had a black-tie dress code, which - as I discovered - requires the wearing of a bow tie. It's not that I was unprepared. The weekend before, I'd bought a bow tie. I had all the ingredients, but could I bake the cake? How hard could tying a bow tie be?

As it turns out, tying a bow tie, especially if you've never done it before and you're in a hurry, is like trying to hit a hole-in-one with the first swing you've ever given a golf club - it ain't gonna happen! Near enough, with bow ties, simply isn't good enough. Either you get the length and tension just right, or you don't.

So, there I was, in the church bathroom, looking from the instructional video on my phone to the mirror in front of me and then down at my watch as I fumbled failingly with the piece of material around my neck, until finally (divine intervention?) it just clicked. The bow tie slid into place with an acceptable amount of symmetry and the

required tension to hold it together without it choking me to death.

I made it to the reception in time, as it happens, and even \*blush\* received the odd compliment on my outfit! But what was I to learn as I looked around at the other sharply dressed men? Most of them had opted for ready-tied bow ties - ones that you can slip on in about five seconds flat. Why didn't I get one of those? It would have saved me so much torment.

All of this got me thinking about what we call "God's grace" in the Christian church. When we talk about grace we're not referring to looking graceful, as one might slinking across a wedding reception dancefloor in a beautiful flowing dress, we're talking about grace as a theological concept. It's the idea - or truth, as I would contend - that God loves and accepts us completely free of any need to fulfil requirements. In other words, we don't need to fit the dress code to get in the door of God's house - God, in Christ Jesus, comes to us in our half-dressed panic and says, "You look perfect!"

What would have happened if I couldn't get my bow tie on that night? What if I was asymmetrical and unravelling? Would I have made it through the front door? Would I have died of embarrassment? Who knows? But in the Christian tradition, there are no prerequisites, no dress codes, you are welcome, and you are loved - just the way you are!



**Tom Hoffmann**

Tom Hoffmann is the pastor at St Johns Southgate Church.  
[www.stjohnssouthgate.com.au](http://www.stjohnssouthgate.com.au)



Southbank Residents Association

# Winter is here

Winter is certainly upon us and many would argue winter brings out Melbourne's best.

In my opinion, Melbourne has a real charm and eloquence about her that is certainly unrivalled to any other city in Australia. A good time to enjoy the many shows the arts institutions will be presenting right here in our backyard.

Firstly, I would like to congratulate our new representative from the Labor party Josh Burns for his success at winning the seat of Macnamara following the retirement of Michael Danby, who held the seat since 1998 representing us for some 21 years. I would like to extend a big thank you to Michael for his commitment to serving the community during this time and wish him all the best with his retirement.

Josh represented the party well at our Meet the Candidates event in April and wasn't afraid to answer the tricky questions. But without his government being in power, I am not sure how far his reach can go. In any case, Southbank Residents' Association is looking forward to engaging with him during his term.

Commiserations to Steph Hodgins-May, representing the Greens, and Kate Ashmor from the Liberal party. They both put in a great effort and certainly held Josh to account for his comments.

How exciting is Boyd Park! The basketball courts are now open and certainly being used and the community garden is established and taking shape, thanks to the Southbank Sustainability Group. The development is obvious in its progress and one can see it beginning to take shape. But

what is more exciting is that it is on time! We are hoping to arrange a launch event sometime in spring.

Our committee also met with the project managers for the City Rd upgrade and we are excited to learn we will begin to see some tangible works in the coming months particularly focusing on the parks around the City Road tram stop and the Kings Way undercroft.

This is just a small part of the whole City Rd upgrade, but considering we have been fighting for many years for this to commence it will be interesting to see just how much will make it into the 2019/20 budget. We will be scrutinising the budget over this month, as we always do, and will make any representations where we think are necessary. It hasn't been uncommon for Southbank Residents' Association to have some budgets wins in years gone by.

Finally, it is approaching that time of year and SRA will be holding its AGM in July. As usual, we will be voting in a new committee. I intend to nominate to remain on the committee, along with a few of our current committee, but I am hoping a few of our community might like to also offer to join and assist us with representing the interests of our residents. If you are interested and would like to find out more, please contact me at [president@southbankresidents.com.au](mailto:president@southbankresidents.com.au)



**Tony Penna**

Tony Penna is the president of Southbank Residents' Association.  
[southbankresidents.org.au](http://southbankresidents.org.au)



## Letters to the Editor

### Taxi chaos

Firstly, a great monthly publication. As new residents to Southbank in the past 12 months it's highly informative.

Living high on the corner of Whiteman St and Clarendon St and diagonally opposite Crown, the increasing issues with taxi behaviours on Friday and Saturday nights has become ridiculous.

The congestion, noise and safety issues at this intersection must be addressed

collectively by Crown, police and the Taxi Directorate.

As can be seen in the attached photo (2am on a Saturday) taxis block all lanes, pedestrian crossings, tram lines and oncoming traffic.

Police patrol every 30 minutes or so and with sirens, lights and horns move them on and within five minutes it's jammed again.

Trams will simply stop, ring the bell for minutes at a time and also block the



intersection. This is then further amplified by general vehicles blowing horns. This all combines to make a nightly cacophony from 10pm to 4am. There must be a solution found

to sort this out.

Police fining taxi drivers for several road rule breaches would solve this as word would spread quickly with drivers.

Regards,  
Garth Wisher  
Southbank



Send your letters to [news@southbanklocalnews.com.au](mailto:news@southbanklocalnews.com.au)

**Welcome to St Johns Church Southgate**  
**A place for worship, prayer and community located on the upper level of Southgate**

**Every Sunday**  
9am Traditional worship with communion  
10:30am Sunday School (during school terms)  
11am Informal worship with communion  
6pm Sunday Night at St Johns  
Informal contemporary worship hosted by Lutheran Students and Friends

The chapel is open daily for private prayer and reflection

**St Johns Southgate**  
20 City Road Southbank Telephone 9682 4995 [www.stjohnssouthgate.com.au](http://www.stjohnssouthgate.com.au)



Metro Tunnel

# Anzac Station construction update

Works to build the Metro Tunnel Project's Anzac Station on St Kilda Rd reached a new milestone in May with the completion of the station walls in the southern section of the site.

On the northern section of the site, the new station roof is nearly complete and excavation will soon begin. As the station is being constructed from the top down, the walls are built first, followed by the roof. A void is then left in the roof, through which excavation can be undertaken, minimising noise and dust.

The start of major excavation will see works move into the next phase, as the excavated station box will serve as the launch site for the tunnel boring machines.

At Edmund Herring Oval, works are also progressing to prepare for the installation of a treatment plant that will support tunnelling works next year.

## Virtual world brings Melbourne's past and present to life

Budding archaeologists can delve into Melbourne's past thanks to an innovative creation for world-famous computer game Minecraft.

The *Mini Melbourne* virtual world features an archaeology adventure set among the Metro Tunnel Project's dig sites.

It's a Minecraft world-first - the first "virtual city" built as an educational resource for students.

Minecraft enthusiasts around the world can immerse themselves in *Mini Melbourne*, which features familiar sights such as Flinders Street Station, St Paul's Cathedral, Melbourne Town Hall and Federation Square.

Minecraft - now owned by Microsoft - is a global phenomenon with more than 154 million copies sold, making it the second best-selling video game of all time behind



Tetris. The software is used for education purposes in more than 100 countries. *Mini Melbourne* was launched by Minister for Transport Infrastructure Jacinta Allan and Education Minister James Merlino in the CBD in May.

Students at the launch demonstrated the educational benefits of Minecraft by unearthing the city's history as virtual archaeologists. Using trowels and brushes, they searched online for items dating back to Melbourne's European settlement. The archaeology adventure then involves researching objects found such as medicine bottles, a corkscrew and even teeth - evidence of a dentist working on the premises in the early 1900s.

Minecraft *Mini Melbourne* was developed by the Metro Tunnel Education Program and Victoria's Department of Education and Training to develop students' skills in STEM subjects (science, technology, engineering and maths). For more information on *Mini Melbourne* and the archaeology adventure, visit: [metrotunnel.vic.gov.au/library/resources-for-teachers/minimelbourne](http://metrotunnel.vic.gov.au/library/resources-for-teachers/minimelbourne)

Owners' Corporation Law

# OC chair wins \$120k defamation payout

A court in Sydney has awarded damages of \$120,000 to the elderly chairperson of a Manly apartment block, after a female tenant sent an email to him and the other owners in which she asked him to stop emailing her about locking her mailbox.

The court heard the chairperson had sent a number of emails to the tenant noting that her mailbox in the building had been left open and requesting that she keep it locked.

This included an email on May 24, 2017, in which he said: "As your mailbox has again been open for the last few days it is obvious I have not been able to convince you of the seriousness of this issue."

The court heard there had been reports of gangs stealing mail in the area. Mailboxes in the building were broken into twice, starting in April 2017.

The chairperson believed the culprits may have been able to cut a "master key" by examining the lock on the tenant's unlocked mailbox.

In her email on May 25, the tenant said: "Your assertion/s that a single unlocked mailbox has allowed a criminal milieu to stalk the ... [apartment complex], and spend the time necessary to copy barrels/locks in order to then construct a master key is farfetched (sic)."

She described the chairperson as having a "fixation on this issue" and suggested that, in light of his "email hobby", he might consider getting sensitive documents such as banking statements sent via email rather than in the post.

Lawyers for the chairperson said the email defamed him by implying he was a "small-minded busybody who wastes the time of fellow residents on petty items" concerning the building, and that he "unreasonably harassed" and "acted menacingly towards" the tenant by "consistently threatening her by email".

They also alleged the email from the tenant suggested the chairperson was a "malicious person who sent threatening emails to the defendant and copied in other residents" to publicly humiliate her.

The judge found those meanings were conveyed and the tenant had failed to establish a defence to any of them. This included defences of truth and honest opinion.

"It would be fair to say that every sentence of the defendant's email in reply struck a blow at the plaintiff, and was intended to ridicule and humiliate him in every way," the judge said.

She found that the tenant's evidence was "coloured by exaggerated language, groundless suspicions and hostility".

As a lawyer who practices in owners' corporation matters, I am not shocked by this decision, even though the facts of the matter may seem trivial.

Defamation law is complicated and convoluted, however it is best practice that one should avoid ever having to get mixed up in a defamation case.

Owners and committees in Melbourne should reflect on this judgement. I have seen many emails over the years that have been sent by owners to committee members and vice versa that are far worse in language and imputation.

It will only be a matter of time before a similar judgment is made in Victoria.

My advice: best to go to bed and see how you feel in the morning before sending that email to the committee at 9.30pm at night. Calmer heads and more carefully chosen words seem to prevail in these circumstances ...



**Tom Bacon**

Tom Bacon is the principal lawyer of Strata Title Lawyers. [tom@stratatitlelawyers.com.au](mailto:tom@stratatitlelawyers.com.au)

## Open for business Beer DeLuxe: Federation Square

Throughout construction of the new Town Hall Station, Beer DeLuxe will remain open and accessible. There's always something happening at Beer DeLuxe Fed Square. Whether it's a major cultural or sporting event, or a special gathering in the Square itself, Beer DeLuxe always has something special on offer.

For more information visit [metrotunnel.vic.gov.au](http://metrotunnel.vic.gov.au) or call 1800 105 105.

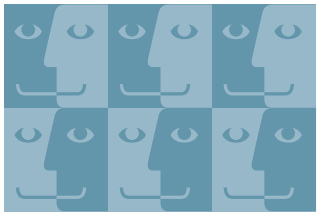


**Beer DeLuxe**



More trains,  
more often





# FACES OF SOUTHBANK



JASON, 37, CHEF

No, I'm definitely not surprised and I'm glad it happened.



TAHLIA, 23, OFFICE WORKER

I was definitely shocked by the results of the election. I'm all for people power and the voice of the young and the results did not reflect that in the slightest.



SHANE VINCENT, 35, TEACHER

Yes, I was quite surprised. I'm disappointed that the majority of Australia voted for the party with the least commitment to reducing carbon dioxide emissions and creating policies to do something about climate change.



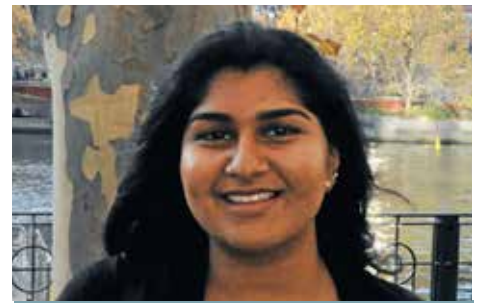
KAREN, 49, TERMINAL CO-ORDINATOR

I was somewhat surprised. From what we heard, we thought it was going to go the other way!



NICK NOLAN, 48, SURVEYOR

Yes, it went against the trend but I think they're both the same. We are choosing between very little.



RAISHA RAHMAN, 18, STUDENT

I'm sad. I don't even know. I just think that no one is entirely good and no one is entirely bad. One might appear better but be just as bad in another area.

## Question:

Were you surprised by the federal election result?

THE MOST EXCLUSIVE ESCORT AGENCY

# Paramour

OF COLLINS STREET

- Dinner Companions
- Social Escorts
- Sensual Ladies

Follow us on twitter @paramourescort to see x3 free lingerie pics everyday to your feed!

**96546011** CBD - 5 MINUTES TO YOUR DOOR  
 たくさんの美しい女性 日本語を話します

Subscribe to our mailing list via our website and See real pictures of our ladies at [paramour.com.au](http://paramour.com.au)

Call or book at [rsvp@paramour.com.au](mailto:rsvp@paramour.com.au) MELBOURNE CBD

SWA113E

## SOUTHBANK SUDOKU

Last month's Sudoku solution

N	K	T	A	O	U	B	S	H
O	B	H	S	K	T	U	A	N
A	S	U	N	B	H	K	T	O
H	O	S	T	U	A	N	K	B
T	A	N	K	H	B	S	O	U
K	U	B	O	N	S	A	H	T
U	N	A	H	S	O	T	B	K
B	T	O	U	A	K	H	N	S
S	H	K	B	T	N	O	U	A

A variation of Sudoku, with the letters SOUTHBANK replacing the numbers.

The rules are the same as regular Sudoku, each line of the must contain the letters 'SOUTHBANK' as must each 9-square box. This Sudoku is HARD! Good Luck!

		N			K	B		
				A		N	S	
S			H			T		U
B				K		A	O	
	H	K		T				B
N		H			A			T
	S	B		N				
		T	U			H		

Southbank Sustainability Group

# A community that gets involved

It's phenomenal and a bit touching seeing the community rally around a communal green space with such passion, interest, curiosity, and appetite for gardening. Connecting the community: this was May's theme.

It's a theme we are broadening beyond gardening this month by inviting the wider community to participate. We want your input on which event you'd like to see from the Southbank Sustainability Group (SSG) next and ideas that will contribute to the garden's look and feel.

With the community garden in its infant stages, a makeshift pop-up plant nursery in the back orchard and the first round of harvesting all happening simultaneously, gardening has been the focus of our volunteers, old and new, this past month.

We saw new community members, novice and experienced in gardening, excitedly join our meet-ups to tend to Southbank's new veggie and herb garden. It's wonderful to see so many neighbours from diverse and different backgrounds connect through the joy of gardening.

With many veggies either ready or near-ready for harvesting, it's hard to believe that we're already starting the second planting cycle just eight weeks since the first cycle. In our last two meet-ups alone we've harvested approximately 3kg of veggies and leafy greens! Swiss chard, spinach, beetroot, lettuce, and bok choy will be harvested next.

Not all veggies are harvest-ready and not all veggies are harvested in the same way. If you have your eye on a veg or leafy green, or want to know what's harvest-ready, email us for harvesting instructions. This is a garden open to the community and we do want the community to help itself to the garden's organic goodies. However, we need to make sure they are harvested sustainably in a way that maintains the plant's longevity.



## Calling for community input

Group volunteers are coupling up to creatively source sustainable labeling and signage, in collaboration with the Men's Shed. We're also preparing a kids' creativity day to help with a colourful harvesting signage system. We also want to hear from all of you on ideas for sustainable labelling, signage, and mini-notice boards to inform what's planted in each garden bed, what's ready for harvesting, and other general info, while adding some colour and flavour to the garden beds.

The only requirements are that:

- **a)** the idea uses 100 per cent sustainably sourced materials (think circular lifecycle, upcycled materials, zero waste endlife); and

- **b)** it can be placed or stand alone in the soil. Email us your ideas, using the subject: "Labelling idea". Entries close on 22 June.

Another sustainability education day is also coming soon. The top three topics of interest are zero waste lifestyle basics, mindful consumerism or balcony gardening basics. We want to hear from you on which of these three topics you prefer to catch. Email to let us know, using the subject: "Education Day topic". Entries close on 24 June.

If you're interested in getting involved with SSG, you can message us or come join us at an upcoming meet-up. Upcoming meet-ups are Saturday June 22 and July 6, 10am at the Boyd foyer or community

garden sitting area.

About the group: A solutions-focused community group of Southbank residents working to bring positive change in sustainability practices and education to our neighborhood, while building a wonderful community of like-minded people. Reach us at [southbanksustainability@gmail.com](mailto:southbanksustainability@gmail.com) or [facebook.com/SouthbankSustainabilityGroup](https://www.facebook.com/SouthbankSustainabilityGroup)



**Artemis Pattichi**

Southbank Sustainability Group  
[southbanksustainability@gmail.com](mailto:southbanksustainability@gmail.com)

## Health & Wellbeing

# Worrying? Here's why and what to do about it

Worries, doubts, and anxieties are a normal part of life.

It's natural to worry about an upcoming job interview, a big performance or a first date. It can in fact be helpful when it spurs you to take action or to solve a problem.

"Normal" worry, however, becomes a problem when you're preoccupied with "what ifs" and worst-case scenarios persistently and uncontrollably. In this case, unrelenting anxious thoughts and fears can be paralyzing, affecting your daily life by sapping your emotional energy and the way you function from day to day.

But chronic worrying is a mental habit that can be broken. You can train your brain to stay calm and look at life from a more balanced, less fearful perspective.

## Why do I worry so much?

If you suffer from chronic anxiety and worries, chances are you look at the world in ways that make it seem more threatening

than it really is. You may struggle with what psychologists call cognitive distortions.

Here are some examples of cognitive distortions that might be getting in the way for you (there are many and this is just a snippet):

**Black and white thinking:** is a cognitive distortion where we tend to see things as all-or-nothing and only see the extremes of the situation. In order to successfully work through this cognitive distortion, you must get into the habit of challenging yourself to take into account other viewpoints and interpretations of the situation.

**Catastrophising:** is a cognitive distortion where we tend to blow circumstances out of proportion. Once a problem seems larger than life, it makes it incredibly difficult to overcome. In order to successfully work through this cognitive distortion, question whether things are truly as bad as you make them out to be.

**Should-ing and must-ing:** This is a cognitive distortion where we tend to make unrealistic and unreasonable demands on ourselves, and on others. You might for

instance say, "I/you must... I/you should..." .These statements put undue pressure on you, and on other people to meet your high personal standards and expectations in specific situations.

## Some tips to let go of worrying

Postpone worrying and create "worry time." Instead of worrying thoughts distracting you and dominating your brain space all day, choose a set time and place for worrying. It should be the same every day (preferably long before bed time). During this time you're allowed to worry about whatever's on your mind. The rest of the day, however, is a worry-free zone.

Write down your worries. If an anxious thought or worry comes into your head during the day, make a brief note of it and then continue about your day. Go over your "worry list" during the worry period. As you examine your worries in this way, you'll often find it easier to develop a more balanced perspective.

Talk about your worries. Saying your worries out loud can help you to make sense

of what you're feeling and put things into perspective. If your fears are unwarranted, verbalising them can expose them for what they are-needless worries. And if your fears are justified, sharing them with someone else can produce solutions that you may not have thought of alone.

Ask yourself: "Can I control this situation or not?" If you can control the situation which is causing you to worry, use your above mentioned "worry time" to find some solutions for what is causing you to worry. If you have no control over it, simply acknowledge the thought and let it pass like a leaf on a stream.

Do you have a question or comments for Rajna? Feel free to contact her on [boganovicrajna@gmail.com](mailto:boganovicrajna@gmail.com)



**Rajna Bogdanovic**

Clinical psychologist

## We Live Here

## Bill defects need to be fixed

As we sifted through the exposure draft of the Owners Corporations and Other Acts Amendments Bill released by Consumer Affairs Victoria (CAV) we found quite a few issues.

We Live Here has submitted a response to CAV. In it we have detailed substantial deficiencies in the Bill that need to be resolved.

### Tiers of owners corporations' – excluded clauses

The new legislation will allow for different regulatory requirements based on the number of occupiable lots.

We Live Here has campaigned for this since the review of the legislation commenced in 2016 so at first we were very pleased. But we do have issues in the way it is being implemented.

Put simply: there will be four tiers: two lots, three to nine lots, 10 to 50 lots and over 50 lots.

In other jurisdictions internationally, the tiers have dedicated legislation – a far superior approach. This Bill has a cumbersome, prose-expressed list of exclusions that will confuse the average citizen and delight the legal profession with its complexity.

### "Mates" contract reforms must also apply to building managers and must be retrospective

One long-overdue reform is to prohibit onerous and unfair terms in owners' corporation (OC) management contracts and gives more power to the Victorian Civil and Administrative Tribunal (VCAT) to rule generally whether other terms in OC management contracts are unfair. Some terms slated to be banned are those that:

- Impose procedural restrictions on the revocation of the manager's appointment;
- Enable the manager to renew the contract of appointment at their option;
- Provide for the automatic renewal of the contract of appointment if the OC fails to give notice of its intention not to renew the contract, and

Must not restrict the ability of an OC to refuse consent to the assignment of the contract of appointment to a person appointed as the manager, other than one which provides that such consent, must not be unreasonably withheld.

These proposed reforms in the Bill only apply to OC manager contracts. Unfair contracts for building management are not addressed!

Tens of thousands of Victorians need relief from blatantly immoral building manager contracts with obscene, irrevocable terms of up to 25 years.

We Live Here will be lobbying to ensure that sensible prohibitions on contracts will also apply to building manager and facilities manager contracts and will be retrospective.

### Damage caused by short stays must be addressed

Neither this OC reform Bill nor the so-called Airbnb Bill already enacted, protect high-rise owners and occupiers from a range of property damage issues.

A high-profile case in Docklands right now started with a short-stay party booking

and led to calamitous damage to at least five floors.

A large party was held in a luxury penthouse with a sauna being used for an extended period, ultimately causing the fire sprinklers to flood the party apartment and several floors below.

Now, if there are two more floods caused by the same short-stay apartment within two years, the reformed Bill will entitle the hapless residents who have been flooded to the grand sum of \$2000. And who pays? The Bill says the "short-stay provider".

Moreover, the affected occupier would have to take action "within 60 days of the breach" but the occupier will not be entitled to a single cent unless the identical breach happens three times in two years. This means that there must be three identical incidents in 60 days for an affected occupier to qualify for a paltry \$2000 in damages.

The whole philosophy is upside-down. There is no prevention strategy, it is all about forcing disaffected parties to take arduous legal action for the slim prospect of a tiny sum of money.

Another "Bazinga" clause gives short-stay operators a get-out-of-jail-free card. All a short-stay business operator needs to do is provide the invited guests with a copy of the OC rules – and just like magic – no more liability! Everything becomes the guest's fault. Then anyone affected only has the option to chase the tourist who just flew back to the other side of the world!

### How did these deficiencies arise?

A lot of legislative "experts" have invested countless hours drafting this Bill – so how did it get to this stage with these deficiencies?

We believe the initial consultation period in 2015 to 2016 was flawed. Who was consulted? Developers? Strata managers? Airbnb? One thing is certain: representatives of owners and residents were not consulted properly.

### What's next with the draft Bill?

We have submitted our concerns to the CAV in the interest of all Victorians living in strata developments.

The Bill is expected to be introduced into Parliament later this year, subject to satisfactory resolution of issues raised during this latest consultation period.

### Retirement of Shane Scanlan

We Live Here would like to say a big thank you to editor Shane Scanlan for providing a voice for owners and residents living in high-rise communities, through our monthly columns in the three local newspapers which commenced from the time we launched almost three-and-a-half years ago.

All the very best Shane, we hope there are lots of exciting, new adventures ahead.



www.welivehere.net  
emails to [campaign@welivehere.net](mailto:campaign@welivehere.net)

## Pet's Corner



## Pablo is learning to be an inside dog

Pablo the cavoodle is taking an afternoon stroll through Alexandra Gardens.

Accompanying him in the unusually sunny May weather is Beau, who walks him during the weekdays while Beau's sister-in-law works.

Pablo is roughly five months old and Beau's family has had the cavoodle for four months. The fluffy boy has a nice

blonde coat that turns ginger around the flaps of his ears and tail.

Beau takes the growing puppy on laps around their Southbank apartment. "He likes causing trouble. He likes chewing stuff up and making a terror through the house," he said.

"He's getting there though, we're just trying to teach him on how to be a good inside dog."

Tired from an afternoon of walking, Pablo sits there as Beau tries to make him shake his paw but Pablo just kind of throws his paw forward.

SWA113E

*Top Class*  
of Collins Street

Follow us on twitter  
[@paramouresort](https://twitter.com/paramouresort)  
for FREE lingerie pics  
everyday to your feed!

Open 24/7  
| Sexy and Wild  
| Genuine Escorts

www.topclassofcollinsstreet.com.au  
**(03) 96546351**  
View lingerie pics of our REAL ladies  
[paramour.com.au/escorts/melbourne\\_escorts/gallery.html](http://paramour.com.au/escorts/melbourne_escorts/gallery.html)

たくさんの美しい女性  
日本語を話します

## History

# Daring robbery at City Rd

The former City Road Post office, on the corner of Hanna Street (now Kings Way), was a substantial red-brick building that was part of the State School grounds. It is gone now, another victim of the massive changes to the road network in the 1980s.

It served the community well for many years – as a post office, telegram centre (from where telegram delivery boys operated) and as a branch of the Commonwealth Bank. It often carried a substantial amount of cash from the sale of stamps and money orders.

But post offices were generally peaceful places and nothing prepared the staff for the events one Wednesday morning in January 1936. The office had just opened and Postmaster J. Evans and his assistant W.J. Fielding were behind the counter when a man entered. With his face masked by a handkerchief, he jumped on the counter and pointed an automatic pistol at the shocked staff, keeping them covered and telling them to put their hands up quick.

“Before we realised what was happening he had leapt across the grille and was menacing us with a gun” recounted the postmaster. He was then joined by an accomplice (also masked and armed) who had been guarding the door, before ransacking the office drawers and forcing the postmaster to hand over the keys of the safe and removing the cashbox. Threatening to shoot them both if they made a sound, and to come back if they raised the alarm, they were then locked in a rear room overlooking Hanna Street.



Former City Road Post office. Image from State Library of Victoria

But the crooks weren't done yet! As they exited the post office they encountered a youth who was headed into the building with mail and relieved him of seven shillings.

Witnesses described how they then jumped onto the running board of an already-moving car and took off rapidly towards the city.

The post office staff, both badly shaken, couldn't ring the alarm as the window to the room they were locked in was stuck after a recent paint job. But they hammered furiously on it and soon attracted the attention of a passing blacksmith from a nearby business.

A few minutes later, local police arrived on bicycles and motor cycles, followed by a car load of detectives who sped towards the city in the direction taken by the bandits' car. The daring (and well-planned) robbery took place with such precision that few people were aware of it until the detectives and patrolmen arrived. Some months later a young man was charged with the robbery but was acquitted.

Like many of the other armed robberies in a very violent mid-1930s Melbourne, it was never solved.



**Robin Grow**

President - Australian Art Deco and Modernism Society  
robingrow@ozemail.com.au

## SkyPad Living

## High-density cycling

The City of Melbourne's Transport Strategy discussion paper is open for comment – but how might a bike-filled future suit our vertical villages?

We are reminded that “When people choose to ride, they reduce emissions, noise, congestion and free up public transport capacity.” Added to this are the mental and physical health benefits that come from cycling – and with the right infrastructure, it can also be great fun!

In terms of our vertical lifestyle, our proximity marks us as prime candidates for the uptake of cycling. By swapping those short car trips for even shorter bikes trips, we can arrive more quickly at our destination – though possibly less directly as we weave in and out of those congested car lanes.

However, disappointingly, this document is less a discussion paper than advocacy for cycling and the infrastructure needed for its increased adoption.

Missing is a deeper consideration of the current status of cycling as a form of transport in our city – and in particular, how it is regarded by different groups. Only through understanding these different perspectives can cycling move from its current status as an ad hoc means of travel

to a legitimate and mainstream form of transport in Melbourne.

### What has this to do with vertical villages?

Answer – our viewpoints.

We, of the vertical villages, typically live in areas that are also major work and, therefore, transit destinations. Docklands, for instance, greets 65 000 workers daily. This means that quite different mindsets are concurrently operating in our precincts. For example, there is the mindset of the strolling tourist (unfamiliar with their surrounds), the mindset of local residents (walking along their footpaths with children and elders), the office worker mindset (dashing in search of caffeine) and let's also include the mindset of pets and their walkers (notable for their unexpected reactions).

Now add a transiting cyclist en route either to work or home. Their mindset is more focused upon safe and efficient passage.

This means that shared areas with variable speed limits, such as the 8km zones on South Wharf, are often treated as unhelpful suggestions, while cutting through New Quay Promenade brings the promise of a few saved minutes as well as less stop-starts.

Calls for greater mutual consideration and “sharing of space” miss the point. If cycling is to be adopted as a legitimate mode of transport, then it must be so recognised and treated by all parties – by the

cyclists themselves, by the regulators (and enforcers), by other transport users and by designers. This requires holistic thinking.

### Take the issue of bike parking.

The discussion paper identifies the need for more bike spaces to keep pace with the uptake of cycling and suggests underground parking and more parking in buildings. However, taking a leaf out of the car hand book, might there also be scope for more mainstream and centralised facilities – a bike hub? This is the approach taken in Tilburg in the Netherlands, where a bike parking facility is being built as an integrated part of their new transport hub (and by current reports, it will outshine their new bus station!). This bike hub offers space for over 7000 bikes, is equipped with a service room for minor repairs and will be guarded – and, also, free for the first 24 hours.

In offering this type of facility, cyclists can park their vehicles in a secure central location and then complete their journey on foot or tram. In so doing, the plethora of bikes adorning the front of our streets is reduced. Admittedly, this goes against our current trend towards free-range cycling (ie. a rider can go wherever their bike can). But a central cycling hub at, for instance, Southern Cross, could cater for impending cycling traffic due to exit the Western Distributor daily – worth a thought! As might the conversion to bike hubs of other multi-storey

carparks located on the CBD fringe.

Turning our heads homewards, once again the car spaces of our vertical villages are candidates for change. Over the last few months, this column has mentioned several ideas for the future use of our car spaces and this month will not disappoint. While newer builds have dedicated and easily accessible bike rooms, storing the growing number of residents' bikes is proving challenging for older buildings, which is further compounded by out-of-date building regulations which do not permit bike storage in car spaces.

There are, however, an ever-growing range of innovations designed to help the space-poor, such as the “Hide-a-Ride”. The offering here is for a bike rack that allows easy sideways mounting of your bike and its secure storage on your ceiling (including your car park).

But to end, there is one emerging issue for our regulators to consider regarding our bike-filled future. This is, as bikes become more entrenched as a mainstream mode of transport, and their commercial use also grows – might, too, the need for these vehicles to be identifiable?



**Janette Corcoran**

Apartment living expert  
<https://www.facebook.com/SkyPadLiving/>

# WHAT'S ON COMMUNITY CALENDAR

JAN | FEB | MAR | APR | MAY | **JUN** | JUL | AUG | SEP | OCT | NOV | DEC |



### INNER MELBOURNE LIFE ACTIVITIES CLUB

Meeting on selected dates and various locations, IMLAC takes in the city's parks, its culture, fabulous eating options as well as festivals, galleries and concerts.

[www.life.org.au/implac](http://www.life.org.au/implac) or call Dianne 0425 140 981



**JULY 4 @ BOYD. 10:30AM - 11:30AM**

### BOYD'S 7TH BIRTHDAY

Come join the team at Boyd for free morning tea and activities for children at the ground floor as it celebrates seven years of service to Southbank! Themed: Birthday Party Storytime.

**TUESDAYS - THURSDAYS & SATURDAYS**  
**CHUNKY MOVE DANCE CLASS**  
Mondays to Thursdays and Saturdays at 111 Sturt St. Chunky Move dance classes are the perfect way to unwind, get fit and improve flexibility and strength.  
[chunkymove.com](http://chunkymove.com)



**TUESDAYS**  
**LAUGHTER YOGA @ BOYD**  
Laughter Yoga is a unique concept that allows you to laugh even when you least feel like it and is ideal for all ages. Sessions are at Boyd Community Hub, Assembly Hall each Tuesday at 6pm.



**FIRST AND THIRD SATURDAY EACH MONTH**

### SUSTAINABILITY GROUP

A growing group of green and sustainability enthusiasts who live in Southbank looking to bring positive change. More info: [facebook.com/SouthbankSustainabilityGroup](https://www.facebook.com/SouthbankSustainabilityGroup)



**FIRST AND THIRD THURSDAY @ BOYD**

### TEAHOUSE TOASTMASTERS

Want to take your public speaking to a higher level or improve your English and make some local connections? Join us on the first and third Thursday every month.

Enquiries: [jvanselow@gmail.com](mailto:jvanselow@gmail.com)

**SATURDAYS 8AM @ BOYD**  
**YOGA WITH MELIA**  
Warm up your weekend with a class of Yoga with Melia! Improve your strength, flexibility and mental clarity. All levels welcome, bookings essential.  
[info@yogawithmelias.com.au](mailto:info@yogawithmelias.com.au)



**MONDAYS 1.30PM TO 3PM @ BOYD**

### MATERNAL & CHILD HEALTH

A free drop-in service available for families that need additional support between appointments. The sessions run in the Maternal and Child Health area at Boyd. No appointments necessary.



**FRIDAYS 7.45AM - 9AM @ BOYD**

### COMMUNITY TAI CHI

WULONG TAI CHI offers you the opportunity to enhance your strength, balance, flexibility and well-being in a friendly, supportive environment. All welcome. [lily@wulongtaichi.com.au](mailto:lily@wulongtaichi.com.au)



**SUNDAYS**

### ARTS CENTRE MARKET

Meet over 80 of Victoria's finest artisans first hand. Discover how these unique artworks are made, chat directly about the products, inspirations and techniques.

[artscentremelbourne.com.au](http://artscentremelbourne.com.au)

**WEDNESDAYS @ BOYD**  
**FREE WALKING GROUP**  
Join local fitness experts JustInTime as they lead a "not just walking group" for Boyd walkers. The program runs on Wednesdays from 9.30am to 10.30am.



**77 - 83 CITY ROAD, SOUTHBANK**  
**ONE ROOF**  
A community, a home and an entire ecosystem providing everything a female entrepreneur needs to thrive under one roof. Find out what's on: [melbourne.oneroofwomen.com/new-events](http://melbourne.oneroofwomen.com/new-events)



**ALL WINTER @ FEDERATION SQUARE**  
**WINTER VILLAGE**  
The Winter Village is equipped with an ice skating rink, a cozy igloo village, a larger-than-life mega igloo where it snows on the hour, a Graze kitchen and a Sip bar.  
[thewintervillage.com.au](http://thewintervillage.com.au)

### TUESDAYS SOUTHBANK ROTARY

Rotary Club of Southbank meets weekly for dinner on most Tuesday evenings throughout the year at Federation Square. Visitors are always welcome.

[southbank.org.au](http://southbank.org.au)

### MONDAYS @ BOYD JUSTICE OF THE PEACE

Local Southbank JP Atilla Akguner offers two hour sessions every Monday morning from 11am until 1pm at the Principal's Office at Boyd. To book in a time contact: [atillaakguner@gmail.com](mailto:atillaakguner@gmail.com)

### FIRST THURSDAY OF EACH MONTH SUNRISE PROBUS CLUB

Over 50, living in Southbank and want to join our vibrant club for activities, events and friendship? Meet at Library at the Dock at 10am. Contact Verna on 0407 065 910. [MSPC.docklands@gmail.com](mailto:MSPC.docklands@gmail.com)

# BUSINESS DIRECTORY

## ATTRACTIONS

Open Daily from 10am  
eurekaskydeck.com.au

**eureka skydeck**

## BROTHEL

**Studio 466**

美女如雲

466 City Road  
South Melbourne

03 9696 4666  
OPEN 7 DAYS

## CHURCH

**St Johns**  
Southgate

20 City Road Southbank  
Telephone 9682 4995  
www.stjohnssouthgate.com.au

## ESCORTS

**Erica Elderly** 96503295

Mature  
Sophisticated  
Affectionate  
Discreet  
Genuine  
Affordable Escorts  
paramour.com.au

5 mins to your door!

www.paramour.com.au SWA113E

**(03)9654 6011**

Melbourne's Finest Escorts can be at your door in 5min as we're located in the CBD

## ENTERTAINMENT

MELBOURNE  
RECITAL  
CENTRE

TO BOOK: 9699 3333  
melbournerecital.com.au

CNR SOUTHBANK BLVD &  
STURT ST, SOUTHBANK

#melbrecital

## FUNCTIONS

**St Johns**  
Southgate

Facilities hire Beautiful venue for weddings and memorial services Concert venue with excellent acoustic and comfortable seating Spacious function room Meeting rooms Kitchen

20 City Road Southbank  
Telephone 9682 4995  
www.stjohnssouthgate.com.au

## GYM

**JUSTINTIME**  
PERSONAL TRAINING

University degree qualified trainers that come to your apartment gym!

Justin Moran  
0411 798 934 justintimept.com

## HAIR & BEAUTY

**RoopRani**  
herbal beauty salon  
HAIR & BEAUTY SPECIALISTS

P5 SOUTHGATE COMPLEX - PH 9686 6504  
WWW.ROOPRANI.COM.AU

## HEALTH



**OSTEO STRONG**

OsteoStrong South Melbourne  
378 Clarendon St, South Melbourne  
P: 7004 1284  
E: sthmelb@osteoststrong.com.au

## MARKET



*Explore the Market*

SOUTH MELBOURNE MARKET  
Corner of Coventry & Cecil Streets, South Melbourne

## LIQUOR STORE

**ACT OF WINE**

Honest wine, craft beer, artisan spirits  
22 Fanning Street SOUTHBANK  
Open 7 Days  
www.actofwine.com.au

## ORGANIC GROCER

**Broad Bean**  
ORGANIC GROCER

EAT. DRINK. SHOP. ORGANIC  
26 Fanning Street, SOUTHBANK

## PHOTOGRAPHY

**PHOTOGRAPHY STUDIES COLLEGE**

MASTERS | DEGREES | DIPLOMAS  
CERTIFICATES | SHORT COURSES

Find Out More

PSC.EDU.AU + 61 3 9682 3191  
info@psc.edu.au | 65 City Road, Southbank VIC 3006

## REAL ESTATE

**CityResidential**  
REAL ESTATE PTY LTD

T: 03 9001 1333

818 Bourke Street,  
Docklands  
VIC 3008

SALES Glenn Donnelly m: 0419 998 235

LEASING Lina D'Ambrosio m: 0430 929 851

www.cityresidentialbourkestreet.com.au

SELLING | LEASING | PROPERTY MANAGEMENT

**FIFTEEN85**  
SOUTH MELBOURNE

www.fifteen85.com.au

**LUCAS**

WE KNOW VERTICAL LIVING  
BETTER THAN ANYONE.  
THAT'S YOUR ADVANTAGE.

9091 1400 | lucasre.com.au

**MELBOURNE SQUARE**

THE LARGEST TERRACES IN MELBOURNE

TO BOOK AN APPOINTMENT CALL 1300 888 770 OR  
DISCOVER A TERRACE STORY AT MELBSQUARE.COM.AU

**RayWhite**

Ray White Southbank | Port Phillip  
111 Clarendon Street, Southbank 3006  
P: (03) 8102 0200  
www.raywhitesouthbank.com.au

**SOUTHBANK RESIDENTIAL**

Specialists in Southbank Apartments  
www.southbankresidential.com.au  
Phone: 964 50 800

**THE EVERMORE**  
MELBOURNE

Retreat Everyday  
call 1300 383 766  
www.theevermore.com.au

**Whittles**

Owners Corporation Management Services



For superior owners corporation management services, contact the Docklands dedicated team  
Whittles, Level 1, 838 Collins Street, Docklands VIC 3008  
T 03 8632 3300 E info.docklands@whittles.com.au

## RENOVATION

**AROM** APARTMENT RENOVATIONS OF MELBOURNE

1300 96 86 07  
edgar@arom.com.au  
www.arom.com.au

## RESTAURANT



Shop M4/9 Mid Level Southgate Complex 28  
Southgate Ave, Southbank  
Ph: 9690 6205  
Menu: enagreekstreetfood.com.au

**DOWNSTAIRS**  
BISTRO & LOUNGE  
215-217 Sturt Street Southbank Victoria  
9686 5015  
WWW.DOWNSTAIRS.NET.AU

## SCHOOLS

www.haileybury.vic.edu.au

**HAILEYBURY**  
KEYBOROUGH BRIGHTON BERWICK CITY BEIJING

## SERVICES

**Stop Noise**  
ADD ON DOUBLE GLAZING  
NOISE REDUCTION SPECIALISTS  
1800 880 844  
INFO@STOPNOISE.COM.AU  
WWW.STOPNOISE.COM.AU

## TAXI

**Crown Cabs Taxi Service**  
Bookings: 1300 12 13 14  
Download the App for your next Ride!

# 8 Auctions, 1 Room, 1 Night

RayWhite

## In-Room Auction Event

Thurs 20th June at 6:30pm

Join us at 111 Clarendon St, Southbank (our office)

Thanks to GAVL, you can also Watch and Bid for these properties online

For more information visit [raywhitesouthbank.com](http://raywhitesouthbank.com)

Ray White Southbank | Port Phillip

111 Clarendon Street

Southbank, VIC 3006

8102 0200

[southbank.vic@raywhite.com](mailto:southbank.vic@raywhite.com)



Auction

1904/250 City Road, Southbank  
\$410,000 - \$450,000 Max Hui: 0430 238 021



Auction

2510/283 City Road, Southbank \$515,000 to \$545,000 Michael Pastrikos: 0404 282 864



Auction

2405/283 City Road, Southbank \$550,000 - \$590,000 Austen Kosasih: 0432 750 774



Auction

1906/135 City Road, Southbank \$450,000 - \$490,000 Austen Kosasih: 0432 750 774



Auction

3904/45 Clarke Street, Southbank  
\$590,000 - \$630,000 David Barber: 0437 980 091



Auction

2201/58 Clarke Street, Southbank \$440,000 - \$480,000 Austen Kosasih: 0432 750 774



Auction

E219/11 Flockhart Street, Abbotsford  
\$350,000 - \$380,000 Max Hui: 0430 238 021



Auction

1011/163 City Road, Southbank \$700,000 - \$770,000 Michael Pastrikos: 0404 282 864

[raywhitesouthbank.com.au](http://raywhitesouthbank.com.au)



RayWhite



RayWhite

1011/163 City Road, Southbank

3 2 1

- Immaculate condition, move straight in
- Northerly orientation, expansive living with modern attitude
- Granite kitchen with great bench space and stainless appliances

Auction

Michael Pastrikos  
0404 282 864

Zara Ebadi  
0410 871 367



[raywhitesouthbank.com.au](http://raywhitesouthbank.com.au)

2510/283 City Road, Southbank

2 1 1

- Light-filled and large open plan layout
- Timber Floor Boards Throughout
- Extra study nook
- Views of Port Phillip Bay and South Melbourne

Auction

Thursday June 20  
6:30PM our office

Michael Pastrikos  
0404 282 864

Zara Ebadi  
0410 871 367

[raywhitesouthbank.com.au](http://raywhitesouthbank.com.au)