

The voice of Southbank, South Wharf & Montague

SOUTHBANK Local NEWS

■ "Exceptional" office approval

Page 5

■ Brothers in arms

Page 10



■ Southbank Theatre turns 10

Page 12

■ Australian Ballet awarded

Page 17



A done deal

The long road to completion of the Boyd site appears to finally be nearing its end after the City of Melbourne struck a deal with PDG Corporation last month.

Lord Mayor Sally Capp and PDG's managing director Vince Giuliano appeared with Southbank Residents' Association (SRA) president Tony Penna on July 4 to announce the \$16.5 million deal for the 1843 sqm site abutting Kings Way and Kavanagh St.

While the new 110-metre development has increased in height from what was originally proposed for the site (87m), the new deal includes 1000 sqm of new community space across its first two floors - 450 sqm more than what council requested in its tender.



PDG Corporation director Vince Giuliano, Lord Mayor Sally Capp and Southbank Residents' Association president Tony Penna with a render of the new facility at the Boyd site.

Continued on page 3.

Police ramp up efforts to fix taxi mess

By David Schout

Police will introduce a new "taxi feeder station" to alleviate congestion around Crown Casino on Friday and Saturday nights.

In what Southbank Police Sergeant Chris Marsh said has been a "20-year issue", police will soon divert taxis to a feeder station at the Kings Way underpass in a bid to fix the gridlock on Clarendon St on busy evenings.

From here, drivers will pick up a ticket at a soon-to-be-created booth, and present it at the Crown taxi pickup zone.

Those without a ticket will be moved on swiftly.

Sergeant Marsh, who has been dealing directly with the issue for several years, said

the logjam of fare-searching drivers from the intersection at Clarendon and Whiteman streets caused congestion, safety and noise issues.

"We've known about it for a long time, identified it as a problem and we're trying to fix it," he said.

"We can fine them and move cars on but when we walk away the issue returns. It's frustrating."

The new system is a complex operation between numerous stakeholders, including

Victoria Police, Crown, VicRoads, the City of Melbourne and Commercial Passenger Vehicles Victoria (CPVV).

Police will initially run a two-week trial operation, followed by two weeks of enforcement before it is officially rolled out.

"Once the word is out what the new process is, hopefully it's business as usual. Obviously, there will be teething issues, but we will work through that."

In addition to the operation, VicRoads will begin to change traffic light sequencing

outside Crown to ensure a better flow of cabs at busy times.

Sergeant Marsh said all parties remained committed to getting on top of the problem.

"We've certainly had complaints over the years and we're doing our best to fix the issue, and getting all stakeholders together to tackle it. So hopefully the plan we have in place can do that. If not, then it's back to the drawing board and we'll try again."

Continued on page 4.



SOUTHBANK RESIDENTIAL

Specialists in Southbank Apartments www.southbankresidential.com.au Phone: 964 50 800



Council questioned on City Rd

HYPERLOCAL
NEWS

Suite 108, 198 Harbour Esplanade
PO Box 23008 Docklands 8012
Tel: 8689 7980 Fax: 9602 2929
www.southbanklocalnews.com.au

Editor: Sean Car

Publisher: Hyperlocal News Pty Ltd
ABN: 57623558725

Tel: 8689 7980 Fax: 9602 2929
advertising@southbanklocalnews.com.au

Reader contributions are welcome.
Please send articles and images to
news@southbanklocalnews.com.au

Deadline for edition 88 is August 1

CONNECT

Keep up to date with local news & events.

-  Follow us on Twitter
@SOUTHBANK_News
-  Like us on Facebook
Southbank Local News
-  Like us on Instagram
SouthbankLocalNews

The Southbank Residents' Association (SRA) has slammed the City of Melbourne for not allocating more funding towards the City Road Master Plan in its latest 2019/20 council budget.

SRA President Tony Penna also complained of a lack of communication at the Future Melbourne Committee (FMC) meeting on June 13: "Some communication is all we're asking for".

"In our submission we got a response from council officers saying there was a \$5 million investment in City Rd, yet I can only find mention in the budget of \$500,000, which I believe is the dog park," he said.

"Please tell me where the item is for the other \$4.5 million because I certainly couldn't find it."

Mr Penna said the City Road Master Plan will soon be three years behind schedule. He said the SRA received three commitments from the FMC last year:

To put forward all aspects of the City Road Master Plan design documentation to the 2019/2020 budget for completion.

The inclusion of a further \$500,000 in the budget to fund the City Rd signalled



pedestrian crossing.

To update or replace the *Shape Your Southbank* online portal with detailed information regarding the progress of all Southbank projects.

He said these three commitments have not been met. If the second partly has been, he said he could "be forgiven for thinking it hasn't" because it hasn't been communicated as outlined in the third.

"You'll recall the big issue I was making last year was about communication, or lack thereof, hence that's why the resolution came about," he said.

Acting Lord Mayor Arron Wood responded to say the council was investing hugely in Southbank.

"He flies the flag for Southbank, as he should, but we're really undertaking one of the largest investments in the history of Southbank."

"We like Tony's passion for Southbank, but I'd say we're investing hugely in Southbank,

as we should, acknowledging the City Road Master Plan has been pushed back, but largely these projects are pushed back because of the ongoing disruption in our city," he said.

"We never want to get to a situation where City of Melbourne just ploughs ahead with a project without taking into account the disruption that's going on around it."

"I'm confident the City Road Master Plan will be better for it, but rest assured that councillors and the City of Melbourne are well and truly supportive of the City Road Master Plan."

Cr Wood said there were plenty of projects being developed in Southbank.

"Whether it's the Boyd Community Centre, whether it's the new Boyd open space, whether it's the upgrade of Southbank Promenade to the tune of \$5 million, which will hugely increase the ability of people to have that open space, or whether it's investment in Southbank Boulevard, which is \$30 million."

DOWNSTAIRS

BISTRO & LOUNGE



Monday - 7AM-5PM
Tuesday - 7AM-5PM
Wednesday - 7AM-5pm
Thursday - 7AM-Late
Friday - 7AM-Late
Saturday - 9:30AM-Late

REAL FOOD - WE HAVE GONE BACK TO REAL FOOD!

P: 9686 5015 | 215-217 Sturt Street, Southbank, VIC, 3006

A done deal

Continued from page 1.

The parcel of land at 132 Kavanagh St has also had its previous footprint reduced from 2356 sqm to provide for a larger Boyd Park, which is due to open this year. The park and Boyd Community Hub together with the new community space in the development will now account for 6684 sqm of the precinct.

The new development with PDG, which will achieve a 6-star Green Star certification, also includes 40 affordable housing units, residential apartments, a boutique hotel and retail facilities. Subject to planning approval, construction on the development is expected to begin late next year and be completed in 2022.

Following a series of failed attempts to develop the site with previous partner Mackie Group, which dated back to 2011, Lord Mayor Sally Capp said the agreement was a "win for the community".

"We've negotiated a fantastic outcome to deliver community facilities and affordable housing at the Boyd site, putting the needs of a growing Southbank community at its heart," the Lord Mayor said.

"Frankly, the care that has been taken on this important site I think is appropriate. After the issues with the last process we feel really confident that we've ended up with an even better result."

The City of Melbourne is already partnering with PDG Corporation on the \$450 million Munro development opposite the Queen Victoria Market (QVM), which includes affordable housing and 490 build-to-rent residences; a component Mr Giuliano said he wouldn't rule out for the Boyd development.

"Similar to the Munro mixed-use development, we will deliver a precinct that reflects its distinct local character, bringing together various community spheres in one location," Mr Giuliano said. "Our vision is a true vertical village on the park – high-quality residences, affordable housing, fine-grain retail and community facilities."

"It's not often you get an opportunity to develop in a location like this. There are no adjoining high-rise buildings and an abundance of green open space, making it prime for a community atmosphere of residential and commercial spaces."

The deal marks the end of a long journey for the community and the City of Melbourne, which purchased the entire site, formerly home to JH Boyd Girls School, back in 2007.

While the heritage school building at 207 City Rd was converted into the Boyd Community Hub and opened in 2012, the site at 132 Kavanagh St went through multiple failed iterations since 2011 with council's previous development partner the Mackie Group.

Under the previous deal, the developer was expected to deliver the park as part of an 87-metre mixed-use development. As well as providing affordable housing, the original proposal also included plans for specialised services for people living with a disability.

After the arrangements with Mackie fell over twice due to financing issues, the City of Melbourne got on with building the park itself, which was informed by the local community following consultation and workshops last year.

SRA president Tony Penna said that while residents were disappointed that the entire site was not designated for a park, the outcome struck with PDG Corporation was "a good balance".

"It's been a long road," Mr Penna said at the July 4 announcement. "While residents have been lobbying hard to preserve that space as all open space, we believe that this is a good balance between what is required from council's perspective and what the needs of the community are."

"We're particularly excited about the 1000 sqm of community space over two levels of that building which we were certainly lobbying for before that process for that to be included in the process, so we're happy that



A render of the proposal looking from City Rd.

council has listened to the community."

"We're also very happy with the win on the reduction of the footprint so at the end of the day I think it's a great result for the community and particularly with the affordable living and the care that has now gone into this final stage; care that we think hasn't been given in the past."

Due to council policy dating back to 2014, Mr Penna said he was disappointed that the \$16.5 million windfall from the site would be directed into a fund for the renewal of QVM. "It was certainly a topic of angst with the community when we knew the sale was going to happen," Mr Penna said.

In response, Cr Capp said: "It doesn't mean that, as a council, we're not aware of the investment that is required in this neighbourhood. Wherever those funds come from, it's actually about where we are delivering."

The Lord Mayor said council would also be consulting the community on what the 1000 sqm of new community space would be used for. With the current library and many services in the Boyd Community Hub already stretched, it's understood that many of these services could be relocated to the new development.

What do you think of the new deal? Send your thoughts to news@southbanklocalnews.com.au



Arts focus at residents' AGM

The director of the Arts Precinct transformation project will present at the Southbank Residents' Association's (SRA) annual general meeting (AGM) on July 25 at the Malthouse Theatre.

Melbourne Arts Project Director at Development Victoria Hannah Clement will provide locals with an insight into how the once-in-a-generation renewal project is shaping up and answer their questions.

The SRA invites all Southbankers to attend the AGM, which will provide an update on the association's past year's advocacy, while members get their chance to elect a new committee for the 2019/2020 year.

SRA president Tony Penna said SRA welcomed any interest in joining next year's committee. In order to stand for election or to vote at the AGM, locals will need to be an SRA member, which costs \$10 per year. Locals can join anytime via the SRA website or on the night.

Registration will commence at 6.15pm for a 6.30pm start and end at 8.30pm. The Malthouse Theatre (113 Sturt St) cafe will be open prior to the AGM for refreshments.

For more information email info@southbankresidents.org.au or visit southbankresidents.org.au



LUCAS

MAXIMUM RETURN MINIMAL STRESS

At Lucas, we do much more than simply manage your property, we're in the business of providing peace of mind. We do more to ensure you spend less, because we judge our performance on your return on investment.

Leading the way in local Property Management since 2004, our clients turn to us for expert market insight, careful tenant selection, and proactive, efficient management culminating in exceptional results.

Your property is in the very best hands with Lucas.
Contact Dylan Emmett today on 0402 465 779.

lucasre.com.au

Police ramp up efforts to fix taxi mess

Continued from page 1.

Southbank's taxi issues, however, aren't merely confined to Clarendon St.

Further reports have emerged of taxis blocking certain streets near Eureka Tower.

Readers have told *Southbank Local News* of overcrowding on Riverside Quay and even complete blocking of nearby Cook Street.

The general manager of Eureka Tower, who wished to remain anonymous, said not only were taxis making excessive noise, but they often blocked residents coming out of the driveway onto Cook St.

"They're a law unto themselves," she said.

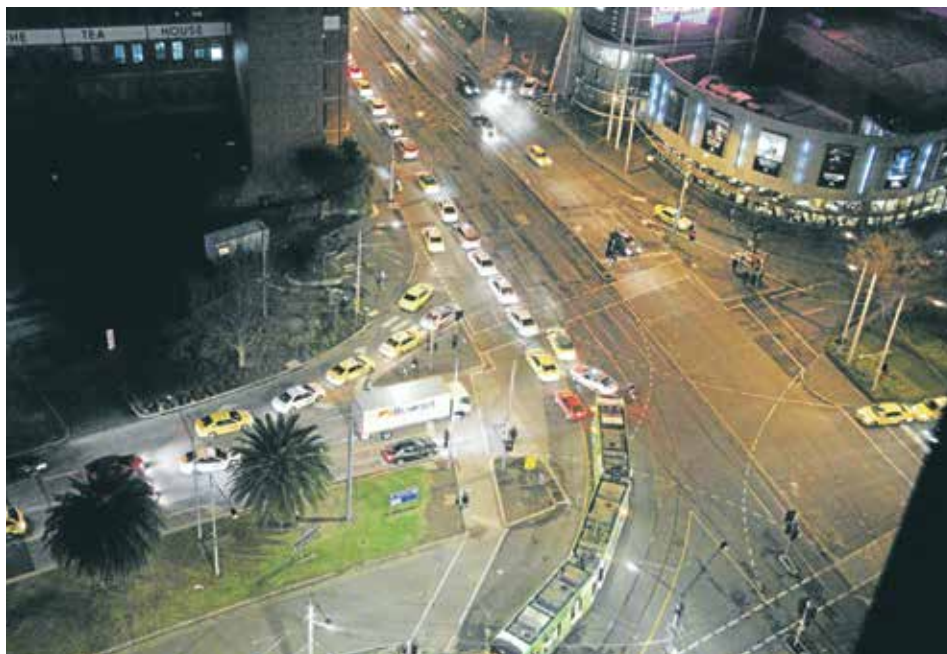
"I've had to go on the street and move the traffic along myself. I can't work in this environment. They're out there honking horns sometimes at 7am in the morning. There's a mass of taxis that just don't move."

A sign on Cook St reads "No taxi stopping in Cook Street" but the manager said taxis were often stopped in no-standing, loading and keep-clear zones waiting for fares.

During a recent fire evacuation drill, drivers had reportedly blocked Cook St, preventing would-be fire trucks from entering.

She said that despite the daily offences, the City of Melbourne would not accept photo evidence of offending drivers.

"The only way to hit them is in the hip pocket, otherwise nothing will happen. The



Main: A regular scene on a Saturday night of Clarendon St. Top right: Taxis block access at Riverside Quay. Bottom right: a Eureka resident is blocked by taxis on Cook St.

City of Melbourne come out and fine people but they can't be here all the time and I understand that. So there needs to be a way of policing it when no one is here." Sergeant Marsh confirmed that police were also aware of illegal activity on Riverside Quay, and were now "actively patrolling" the area.

A council spokesperson said the City of Melbourne were working with relevant stakeholders to address the issue.

"At the moment there is a surplus of taxis and rideshare operators competing for work and needing somewhere to park while they wait for patrons."

The spokesperson said a "mega taxi rank", like that in place on Queen St in the CBD, was not necessarily the answer.

"Introducing larger taxi ranks is not feasible in all areas. A solution for the issue of taxi congestion needs to take into account the

competing needs for curbside space in this area including loading, parking and disability parking."

When contacted for comment, CEO of CPVV (formerly the Taxi Services Commission) Aaron de Rozario said: "Victoria Police, the City of Melbourne, Crown Casino and Commercial Passenger Vehicles Victoria are continuing to work together to address ongoing traffic issues and taxi congestion in the area".

Guardian Childcare & Education South Melbourne



Now Open
Book a
Tour

Every day is a new opportunity for discovery and growth at Guardian Childcare & Education. By creating a supportive, caring and curiosity-igniting environment, our passionate Educators support children to learn, play and, most of all, have fun.

Through exciting learning experiences that develop academic, social, creative and critical thinking skills, Guardian educational programs and practices prepare children for the next stage in life.

- Spacious rooftop garden & natural climbing structures
- Atrium providing natural light to each floor
- Exciting excursion program
- On-site parking for convenient and safe drop-off/pick-ups
- On-site chef preparing 5 nutritious meals a day

97-101 Tope Street, South Melbourne
guardian.edu.au | 13 82 30

Guardian
Childcare & Education



“Exceptional” office building approved

By David Schout

City of Port Phillip councillors have given the green light to a seven-storey commercial development on the corner of City Rd and Ferrars St, despite the matter being referred to Victorian Civil and Administrative Tribunal (VCAT).

On a unique parcel of land, councillors paid tribute to the design of the proposed development, which was originally designed as a 10-storey residential building.

Speaking on behalf of the applicant, Simon Gilbertson from Contour Town Planners said the development offered a point of difference for the area.

“When I look at the expression of masonry rather than the typical glazed boxes we see in the other parts of town, I think this will really set the bar for other developments in the area,” he said.

Similarly, council planning chair David Brand paid tribute to the development’s “exceptional architectural qualities”.

However, not all aspects of the plan have been embraced by the council.

One sticking point at a recent meeting was plans for the development’s eastern side, which back directly onto light rail tracks, to include little to no windows.

The owner of the land, VicTrack, reportedly did not want windows, terraces or openings directly on the boundary of the rail corridor, due to fears of items being thrown onto the tracks and other infrastructure issues.



Renders of the new office development on the corner Ferrars St and City Rd site, which backs onto the 96 tram line near South Melbourne Market.

But Cr Brand said a seven-storey “wall” was far from ideal.

“I think that the city should be unhappy with another authority insisting that a seven-storey edifice in this city should be virtually windowless,” he said.

“I think it’s a bad precedent to set to just say there should be no windows on the boundary of a railway reserve. And it’s certainly in the interest of this city to make this as presentable a building as possible.”

The clause was removed after a council vote.

The development will go before VCAT this month for a compulsory conference due to council not deciding on the application within the prescribed time limit of 60 days.

We invite you to explore The Evermore and Live More!

- Large apartments on offer with a variety of floorplans.
- ✦ Buy direct from developer – Buyer Incentives available.
- ✦ Construction is well underway, move in late 2019.
- ✦ Located only a few minutes from Melbourne’s CBD.
- ✦ Resort style living in prime location.

Located in a quiet and safe area of Dorcas St which benefits from access to three postcodes, South Melbourne, Southbank and South Yarra.

THE EVERMORE

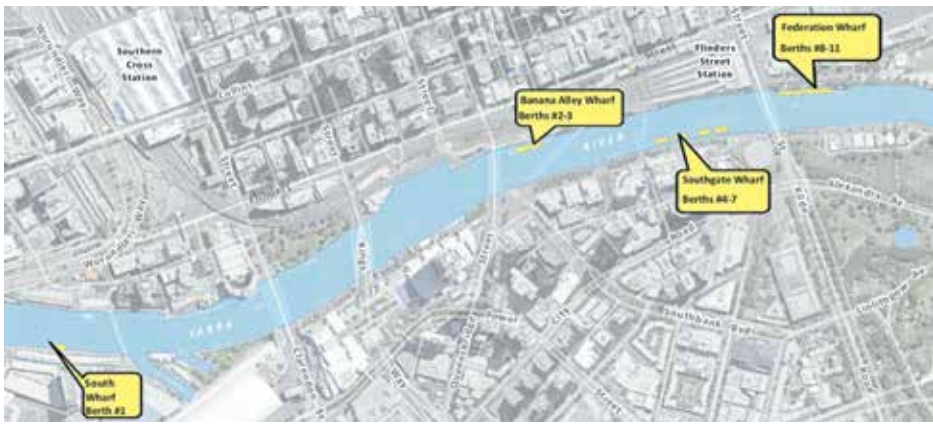
MELBOURNE




Display suite & apartment available to view, contact us for further information
www.theevermore.com.au or call 1300 383 766

Retreat Everyday





A map from Parks Victoria's website highlighting the overnight berths from Southbank to South Wharf.

10-year berthing licenses locked in

Parks Victoria (PV) has confirmed its overnight berthing arrangements on the lower Yarra River for the next 10 years.

Following an extensive competitive allocation process that included a multiple agency and industry association governance structure, skills-based assessment panel and independent probity advisor, PV awarded the most successful applicants overnight berths. They include:

- Federation Wharf: Melbourne River Cruises and Yarra River Cruises
- Southgate 1: Melbourne River Cruises
- Southgate 2: Spirit of Melbourne
- Southgate 3: Classic Cruises
- Southgate 4: Melbourne Water Taxis
- Banana Alley: Go Boat
- South Wharf: Melbourne Water Taxis

PV's District Manager of Waterways Michael Treanor told *Southbank Local News* that the four locations and 11 berths

offered as part of the expression of interest (EOI) process were based on sites where it had designated infrastructure available for commercial operations. While the new arrangements still allow access to public berths for other commercial operators, overnight berthing is not permitted.

South Wharf was also offered for the first time by PV, taking the previous berth number from 10 to 11. Mr Treanor said the locations, berths, selection criteria and weighting were endorsed by the Lower Yarra River Management Advisory Committee.

"Assessments were based on the applicants addressing key evaluation criteria, as outlined in the EOI documentation and all applicants were asked to nominate their first, second and third preferences for berthing," Mr Treanor said.

"The assessment panel allocated berths based on how well applicants met the selection criteria, their nominated preferences and three berthing allocation principles which included, safety for all river users, diversity in the final product offering across the suite of operators and manoeuvrability of larger vessels at specific berths."

Late work causes local headaches

Local residents have slammed a lack of consultation over continuing overnight construction works at Australia 108, which are due to continue until October.



Australia 108 is due for completion later this year.

A City of Melbourne spokesperson told *Southbank Local News* that it had granted developer World Class Land a permit for the installation of a protection deck to support a cantilevered structure at the City Rd and Southbank Boulevard corner site back in February.

The night works, which require temporary road closures of Southbank Boulevard, City Rd and Falkner St, are scheduled for July, September and October with no works expected to take place in August.

"After careful consideration of the impacts on all stakeholders, City of Melbourne officers deemed that the most suitable time for this activity to take place was during the non-peak hours 9pm to 6am. In addition, City Road is an arterial road and Vic Roads would only approve the occupation of it at night so traffic impacts are minimised during the day," the spokesperson said.

"Following the completion of the protection deck, the majority of the cantilevered structure will be built during normal construction hours with sections over Southbank Boulevard and City Road being built and the protection deck being uninstalled during non-peak times."

While the developer held a community engagement session on January 15 at the Boyd Community Hub and circulated an information pamphlet to surrounding buildings, residents say this is insufficient.

Writing to *Southbank Local News* last month, Sutherland Place resident Graeme Blundstone referred to the situation as a "snow-job of the highest order".

"It is 7.30pm and work is continuing tonight at full steam," he said. "No one has 'notified residents' of any out of hours works or road closures."

"Neither I or our owners' corporation (OC) building manager have been able to get anyone to talk to us, which makes me wonder if they are too ashamed to."

"In a call to the council's after-hours line to ask about the work going on at the Australia 108 site around 8.30pm, I was informed that after some kind of meeting between the council and developers, this site has astoundingly been given overnight work permissions until the completion of the project."

"Now, surely, a decision like that must need consultation with nearby residents and a chance to voice opposition, however, nothing of the sort took place."

"Who are this council meant to be representing here, rate-paying residents or multi-national high-rise developers?"

A City of Melbourne spokesperson said that it had directed the builder Multiplex to undertake a series of noise mitigation techniques to limit the impact on surrounding residents.

news@southbanklocalnews.com.au

CITY OF PROGRESS

WE'RE SHAPING OUR CITY TOGETHER

Discover more at melbourne.vic.gov.au/shapingthecity



CITY OF MELBOURNE

Ashmor considers Senate

Former federal Liberal candidate for our local seat of Macnamara Kate Ashmor says she is still considering nominating for a vacant position in the Senate.

Having fallen short to Labor MP Josh Burns in the May federal election, Ms Ashmor told *Southbank Local News* that she was "seriously considering" a move for the position left vacant by former communications minister Mitch Fifield.

Mr Fifield has resigned from the senate after being appointed as Australia's Ambassador Designate to the United Nations by Prime Minister Scott Morrison.

It's also been reported that former member for the seat of Corangamite Sarah Henderson will nominate for the position.

Nominations opened on July 8 and will close on July 26. An update will be published in the August edition of *Southbank Local News*.

Hilton revealed

The first render of Southbank's new Hilton Hotel, as part of OSK Property's Melbourne Square development on Kavanagh St, has been revealed.

Legal practice Baker McKenzie, who acted for the Malaysian developer in its agreement with Hilton Hotels & Resorts, provided the image last month along with a statement from its corporate real estate partners.

"It was a great honour and pleasure to act on this project, which is possibly the largest management opportunity ever undertaken in Melbourne," Baker McKenzie's Dora Stilianos said.

To sit at the corner of Power and Kavanagh streets, the new hotel will comprise around 600 rooms, world class restaurant offerings and guest amenities.

The hotel will form part of stage two of Melbourne Square, which includes a third residential tower.

Two residential towers are currently under construction as part of stage one, while stage three will comprise a fourth residential tower and a commercial tower.

OSK Property will release more information on its hotel agreement this month.



A render of the new hotel looking from Balston St.

Crime down

Latest figures released by the Crime Statistics Agency (CSA) show a slight decrease in the total number of criminal incidents over the past year in Southbank.

The figures from the CSA, which tracked crime statistics between April 2018 and March 2019, recorded a total of 2,447 offences in Southbank; down from 2,463 the previous year.

Crimes against the person (455), drug offences (142) and public order and security offences (290) increased from the previous year. However, property and deception offences (1,428) went down.

The trend in Southbank is contrary to the statewide statistics, which show a two per cent rise overall. A total of 387,157 criminal incidents were recorded; an increase from 379,396 incidents in the previous year.

Assaults are up 3.6 per cent, robbery is up 6.4 per cent and drug use and possession is up 12 per cent.

Alleged offender incidents recorded by Victoria Police continued to increase over the past 12 months, up by 6.9 per cent to 178,731. This represents a 45.2 per cent increase and is the highest number on record for the CSA data.

SOUTHBANK PLACE

GRAND OPENING

13 to 21 JULY 10am-5pm

151 City Rd, Southbank
(Central Equity Sales Office)

INSPECT Central Equity's next generation of apartments with luxurious resident facilities. Level 41 Horizon Club - Cinema, lounge, dining, outdoor terrace BBQ & recreation room. Level 9 - Indoor pool, gym, yoga room & outdoor BBQ area.



Inspect fully furnished display apartments!




GRAND OPENING

13th to 21st JULY

151 City Rd, Southbank

🔑

Q&A with Mortgage Broker*

Get answers to your finance questions

☕

Free gourmet food & barista coffee*

*Grand opening activities on weekends only.

Just completed & ready to move in!

- Limited number **FOR SALE** from \$459,000[^]
- Limited number **FOR RENT** - 2 bed from \$590[^]P/W (1 & 3 beds also available) [^] Prices as at 4/7/2019, until sold/ let.

CENTRAL EQUITY

AWARD-WINNING MELBOURNE DEVELOPER

📞

1800 63 8888

🌐

southbankplace.com.au

Marking the “next generation”

Located at the corner of Power and Kavanagh streets, Southbank Place is the first of developer Central Equity’s “next generation” apartment projects to be completed.

The 52-level apartment, which was officially completed last month, includes extensive state-of-the-art resident facilities over three levels and large city homes designed with liveability in mind.

Central Equity’s latest addition to the Southbank skyline marks its 29th development in our suburb, with its first, 28 Southgate Avenue, having been delivered back in 1995.

Its 30th Southbank development, Focus, is soon due to get underway at 75 City Rd and will continue its current chapter of delivering “next generation” living.

Southbank Place offers residents a vast range of resort style facilities set over 1400 sqm. The residents-only “Horizon Club” on level 41 provides the luxury and feel of a hotel right at home. There are two kitchens for catering, an expansive dining area, a lounge and a terraced outdoor barbecue area.

Residents can enjoy a dinner party with spectacular views across Melbourne and Port Phillip Bay as their back drop or take in a movie and relax in reclining lounges in their own “gold-class style” cinema next door.

A multi-purpose recreation room allows residents to meet in the informal lounge area or arrange a game of table tennis.

Health and wellness has also been a key area of focus in Central Equity’s latest development. Residents will be well taken care of with a large, indoor heated pool with expansive glass roof, as well as an extensively fitted gym and yoga room. Residents can escape the fast pace of the inner city and



The main entrance to Central Equity’s latest project Southbank Place on Kavanagh St.



A look inside one of the apartments.

enjoy two spacious landscaped garden terraces for relaxation and four barbecues with seating areas.

Designed by Graham Fisher Bell Fisher Architects, a luxurious foyer, complete with a 24-hour concierge, provides a grand sense of arrival with expansive five-metre ceilings and a wall of glazing overlooking Kavanagh St.

Located in the heart of Melbourne’s Arts Precinct and within walking distance of the Crown Entertainment Centre and the CBD, Southbank Place provides direct access to a variety of education options and the major sports and recreation areas via public transport. Local community services include a library, child minding facilities and a new city park nearby at Boyd Community Hub.



The foyer and concierge desk.

Central Equity has now developed over 80 projects and the company has completed more residential towers in Southbank than any other developer. A pioneer in the precinct, with over 30 years’ experience, it has unparalleled experience developing Southbank to meet residents’ requirements.

Recognised for its projects by various leading industry bodies, Central Equity won the prestigious Housing Industry Associations’ (HIA) Victoria Apartment Complex Award in 2018 and has won the award four times in the past eight years.

To inspect new, fully furnished display apartments at Southbank Place or enquire about a limited number of one-, two- or three-bedroom apartments for sale, call **1800 638 888**, or visit southbankplace.com.

Building a better Domain

The City of Port Phillip has completed its consultation with the community on its vision for urban renewal in the Domain Precinct.

As a direct continuation of Southbank Village from Dorcas St through to Albert Rd, the *Domain Precinct Public Realm Masterplan* shapes as an important guiding vision for our community more broadly.

With consultation having ended on Wednesday, May 29, the City of Port Phillip said that it received “fantastic feedback” from 74 survey responses and a community workshop at Seasons Botanic Gardens on May 25, which 35 people attended. Council said that the engagement shed light on some recurring themes in the precinct, including:

- the importance of greening the precinct;
- balancing the needs of vehicles, pedestrians and bike riders, including the consideration of traffic and on-street parking;
- improving streetscapes, including consistent and flush paving, more lighting and amenities;
- better and more accessible pedestrian connections, particularly across Kings Way;
- ensuring shared spaces are safe and useable; and
- a desire to plant mature trees, with better maintenance and care.

The feedback will now be incorporated into the draft plan, which will be released for public exhibition on July 18. An information session will be held in July.

haveyoursay.portphillip.vic.gov.au/domain

ENA Greek Street Food is part of Melbourne’s thriving dining culture. Situated on the banks of the Yarra River, ENA is bringing modern twist to food inspired by the streets of Greece.

Introducing new Winter menu with dishes to warm you up for the winter, with mouth watering house made Soup and Dishes.

WE INVITE YOU TO SHARE THE FEASTING WITH FRIENDS AND FAMILY. YIAMAS!

Shop M4/9 Mid Level Southgate Complex
28 Southgate Ave, Southbank
Ph: 9690 6205 Menu: enagreekstreetfood.com.au

Receive a Free Bottle of wine*
on minimum spend of \$100

Bring the voucher to receive the free bottle of wine

Plan needed to address waterfront woes

By Sean Car

As a major gateway to our local community and our city, residents in Beacon Cove say that the Waterfront Place precinct is in urgent need of regeneration.

Home to Station Pier and the 109 tram station, which feeds directly through Southbank, the precinct is the first point of contact with our city for more than 700,000 passengers who travel through it each year.

While the state government provided the Victorian Ports Corporation (Melbourne) (VPCM) with \$5.8 million over two financial years in its 2018/19 budget to redevelop a long-term plan for Station Pier itself, locals say the wider precinct is deteriorating.

Complete with an abandoned building at 1-7 Waterfront Place, which has long been the subject of an application for a 10-storey mixed-use development, and a series of struggling cafes and restaurants, residents say the area has become "tired and run down."

The Beacon Cove Neighbourhood Association (BCNA) has been lobbying all levels of government for many years on the issue, and its president Eddie Micallef said a master plan was badly needed.



The Waterfront Place precinct in Port Melbourne.

"We're well aware that this area is not terribly functional. The businesses are all struggling desperately, some of them are going under. It's also progressively deteriorating. It's tired, run down and it's lost the support of the local community," he said.

"These businesses have 99-year leases and they've got about 80 years to run. The original vision about having big restaurants packed on Saturday nights and spread out during the week is gone and they're struggling to exist."

While the City of Port Phillip developed the *Port Melbourne Waterfront Urban Design Framework* back in 2013, which focuses on the area from Bay St through to Princes Pier, the BCNA say a more coordinated, state government-led plan is required. Local member for Albert Park Martin Foley agrees.

"I know that the Station Pier precinct and surrounding area is under increasing pressure from population growth, increased cruise liner and tourism traffic, ageing infrastructure and the demands of a changing climate," Mr Foley said.

"The need for a single coordinated whole-of-community response that brings together the three levels of government, industry and community for a single coordinated approach is crucial to the area's future."

"I think the state government is best placed to lead this. We need other levels of government to come on board."

City of Port Phillip Mayor Dick Gross told *Southbank Local News* that while its urban design framework already provided high level direction on the vision for the area, council recognised that the precinct would

benefit from greater guidance and planning.

Cr Gross said that between 2016 and 2018, council had conducted a series of stakeholder workshops and surveys, with the findings to form the basis of a planning scheme amendment to update "out-of-date planning controls."

"This work is currently on hold, pending direction on VicPorts' plans for Station Pier," Cr Gross said.

He also said that council had applied for a Victorian Planning Authority grant, requesting it provide coordination and guidance of an integrated transformation of the precinct. The request is still pending.

The CEO of the VPCM Rachel Johnson said she was supportive of a master plan for the precinct and that Vic Ports had established a community advisory group made up of a number of key stakeholders to inform the redevelopment of Station Pier.

"The pier is the gateway for tourists arriving in Melbourne by ship so we want them to have the best possible experience while they are at Station Pier and in the surrounding area," she said.

Newly-elected federal member for Macnamara Josh Burns said that while the direct role of the Commonwealth was very limited, he said that it could, however, play a role in helping fund improvements through Infrastructure Australia.

news@southbanklocalnews.com.au



Premium
SEASON'S Harvest

Premium Harvest offers an exclusive, sensory dining journey.

From expertly chosen custom-made linen and table settings to remarkable views of the Yarra River in a dedicated area serviced by seasoned professionals.

Premium Harvest is inspired by selecting the best produce Victoria has to offer and teaming it with equally excellent service, views and wines.

This premium package hosts up to 30 people, ideal for large group celebrations.

Starting from \$99 per person at Melba Restaurant.

For the full menu, please visit melbarestaurant.com.au

THE LANGHAM

MELBOURNE

The Langham, Melbourne 1 Southgate Avenue, Southbank, VIC 3006 Australia
T 1800 641 107 melbarestaurant.com.au



Left to right: Constable Tom Rodgers and Snr Constable Ben Rodgers at Southbank Police Station.

Brothers in arms

Southbank Police Station was the scene of a rare twist of fate last month thanks to two of its officers Ben and Tom Rodgers.

24-year-old senior constable Ben Rodgers has been serving our local community since 2015 when the watch house responsible for Southbank was located at St Kilda Rd.

His older brother Tom, 26, who worked as a protective services officer (PSO) for two-and-a-half years before being sworn in as a constable in October last year, has since been working out of Caulfield Police Station.

The result of a completely random stroke of fortune, Victoria Police recently assigned Tom to work at Southbank Police Station on Moray St alongside his brother.

However, with Ben finishing up as a senior constable on June 22 to become a detective specialising in family violence, the pair shared two weeks together before Ben moved to his new role based out of the CBD.

The brothers described the situation as a "complete fluke".

"It was pure luck," Ben said. "I've been in Southbank for a while now and you don't get a lot of say in where you get posted early on, so it was very lucky."

"I think it's nice working together and you know exactly what they're like and what to expect from them. You don't have to be nice when you tell him that he messed up...not that he has!"

While Tom is Ben's big brother, when it comes to policing, this is a fact that is turned on its head. With Ben having wanted to be a police officer since he was at school, Tom's journey to joining the force was preceded by a career in personal training and as a professional triathlete.

Despite weighing up a move to become a firefighter, he said it had been his younger brother's influence that had pushed him towards a career in policing.

"I had thought about being a firefighter but then thought I might give policing a crack," Tom said. "Ben had told me about it, and I thought why not."

"He's helped me heaps. Especially with the paperwork side of things but even when I was a PSO I asked him a lot of questions."

While Ben might be moving on to bigger and better things as a detective, the Rodgers name is set to remain a feature at Southbank Police Station with Tom now posted at the watch house for the next few years.

And if their two weeks together was anything to go by, one benefit of Ben's departure will be less confusion around the station!

"Everybody says that we've got the same sort of mannerisms and we talk the same," Ben said. "One of the tricky things is that we keep getting phone calls coming in and they're after constable Rodgers and people put it through to the wrong Rodgers."

"We've also had members ringing up thinking that they're talking to me, but it's actually Tom!"

Our bees light up

Eureka Tower's famous, and now growing, colony of gold bees now comes alive at night, thanks to the addition of new lighting.

Lord Mayor Sally Capp helped light up the colony on the side of our tallest tower during a special grand opening of its newly-renovated foyer on June 6.

The unveiling of the new-look entrance, which was designed by the same architects that created the tower itself in Karl Fender and Nonda Katsalidis, was topped off when the Lord Mayor switched on the lights by hitting a novelty button.

And in a sign of the tower's love affair with its insect friends, a new giant bee has been added to the building, which now greets residents and visitors at the entrance.

Karl Fender and Nonda Katsalidis, who also reside in the building, said they managed to "squeeze another bee" out of artist Richard Stringer, who designed the original colony that had become a much-loved feature of the building since its installation in 2007.

And as Mr Fender explained to residents on the night of the unveiling, the bees were "starting to leave home!"

"We work over the road," Mr Fender said. "We walk to work backwards and forwards every day and every day we do it we see people taking photographs of the bees. They've become such a Melbourne tourist attraction."

"This new bee is wonderful because you



The newly lit bee colony art installation at Eureka.

can get close to it and see the artistry that has gone into making it. They're beautiful things."

"Actually, they're so good that we're going to put another bee over the road at 2 Riverside Quay, so the bees are now starting to leave home. To get that bee out of Richard Stringer was quite an effort because he's done a lot of bees."

"He [Richard] says: 'I don't think I've got another bee left in me'. But, he's got face up to the fact that after that bee there is no doubt city council will say 'Richard, we want a bee on Town Hall, on the railway station on the library, the museum' ... the bees will become a symbol of Melbourne ... thank you Richard!"

The Lord Mayor said that the city was very proud of Eureka Tower and the civic space it had created for people to enjoy public art.

"These are the spaces where people come to interact and really weave the fabric that becomes that special personality and identity that is Melbourne," Cr Capp said.



Lord Mayor Sally Capp at the opening.



Residents gather at the opening.



Kids fly free!*

From Saturday, 29 June – Sunday, 14 July

These winter school holidays, Melbourne Star has a variety of fun and free activities for you and your kids to enjoy. Including free flights* for kids, a Spy in the Sky challenge and a special Teddy Bear Picnic Day celebration on July 10.

BOOK ONLINE TODAY AT melbournestar.com

*See melbournestar.com for full terms and conditions.



Reforms are a “backwards step”

Councillor for the City of Melbourne (CoM) Rohan Leppert has slammed the state government's proposed changes to multi-member wards as part of its plans for a new Local Government Act.

It comes after Minister for Local Government Adem Somyurek announced on June 17 that the government was seeking the community's feedback on six new reforms, which propose changes to areas including election donations and multi-member wards.

While the CoM isn't impacted by all of the proposed changes due to having its own Act, Cr Leppert denounced many of the reforms as “controlling” and a “backwards step” for women and diversity in local government.

The six new proposed reforms (and their impacts on the City of Melbourne) include:

- Simplifying and clarifying enrolments for voters in council elections. It is proposed to remove the requirement for the CoM to directly enrol property owners and corporation representatives whose primary residence is outside Australia. Those people will retain the right to apply for enrolment.

- Introducing mandatory training for council election candidates and councillors. All new candidates at council elections will be required to undertake training in order to nominate. All elected councillors will be required to undertake induction training within six months of being elected.

- Capping electoral campaign donations and gifts. Foreign electoral campaign donations will be banned at all councils. Campaign donations from a single donor to candidates and candidate groups will be capped at \$4000. The threshold by which campaign donations and other gifts must be disclosed remains at \$500 for the CoM.

- Allowing for the dismissal of a councillor after a community-initiated commission of inquiry. If a Councillor Conduct Panel makes a finding of serious misconduct against a councillor twice in eight years, that councillor will be disqualified for four years. If a petition is received by more than 25 per cent of enrolled voters at a council calling for a Commission of Inquiry into a council, and the Commission subsequently makes a finding that a councillor has significantly caused/contributed to governance failures at the council, the councillor is disqualified for four years.

- Defining standards of conduct. All councils must have Councillor Codes of Conduct which include standards of

conduct prescribed in regulations. A legislated arbitration process will also be put in place to deal with allegations of councillor misconduct rather than councils developing their own processes.

- Introducing a preference for single member wards. CoM is an unsubdivided municipality as specified in the *City of Melbourne Act 2001* and it is not proposed to change this.

While CoM won't be affected by the change to ward structures, other councils with multiple member wards would now be broken up into single member wards as a default, with a councillor dedicated to a single postcode, for example.

Mr Somyurek argued that the new laws would help councils be more accountable, democratic and responsive.

“These changes boost consultation and engagement between councils, residents, ratepayers and businesses, as well as providing for ongoing accountability,” he said.

The 2019 Bill builds on from the *Local Government Bill 2018*, which was the result of a three-year consultation with councils, communities and sector bodies and was informed by an expert panel.

The draft of the Act allowed for councils (other than the CoM) to be constituted in one of three ways: an un-subdivided district, multi-member wards of equal number of

councillors or single-member wards.

“This extraordinarily controlling change to the local government electoral structures is the opposite of the government's stated aim of returning control of councils to communities,” Cr Leppert said. “The consequence for community representation will be a massive backwards step.”

According to current data from the Victorian Electoral Commission (VEC), 41.4 per cent of councillors in multi-member ward councils are women, compared to only 33.9 per cent in single-member wards.

Cr Leppert said a move to abandon multi-member wards would lead to an increase in disproportionate voting and less diversity.

“Proportional systems of voting produce more representative elected representation – it's as simple as that,” Cr Leppert said.

“Why is this Labor government trying to eradicate proportional representative models and make it harder for women to be elected? Such sweeping change to local government needs to be subject to proper scrutiny, not just dropped on the sector as the new minister's pet reform to game local elections.”

“Minister Somyurek's track record on how he works with women is well known; he's already lost the Premier's confidence once before. Now he is pursuing measures that will worsen systemic discrimination against women in local government elections.”

Truffle Dinner

Join Eureka 89 for an evening indulging in all things truffle. Executive Chef Renee Martillano will present a 5 course menu with Australian truffles featuring in each delightful dish.

Simon from Friend & Burrell Trufflery will be there to provide insight into this magical culinary ingredient.

Wednesday 31st July
6.30pm - 10.30pm

\$180pp
5 course menu with a glass of Veuve Clicquot NV on arrival

89
EUREKA 89

Bookings are essential
eureka89.com.au | 03 9693 8889

THESE
School
Holidays

SEE MELBOURNE
FROM ABOVE!

29 JUN - 7 JUL

OPEN DAILY FROM 10AM
Visit eurekaskydeck.com.au

eureka
skydeck

Southbank Theatre turns 10

By Alex Dalziel

On July 1, Southbank Theatre celebrated its 10th birthday with a world premiere production of *Golden Shield*.

The theatre, which is the principal home to the Melbourne Theatre Company (MTC), released 1000 tickets at \$10 each to entice as many members of the public to join in the celebrations.

MTC artistic director Brett Sheehy said: "For 10 years, Southbank Theatre has welcomed audiences and artists from Melbourne, Victoria and beyond; firmly establishing itself as a creative, cultural hub and embedding MTC in the heart of the Melbourne Arts Precinct."

Southbank Theatre hosted its first performance in 2009, with the world premiere of *Poor Boy* starring Guy Pearce.

The building was designed by architect Ian McDougall from the award-winning Melbourne architecture firm Ashton Raggett McDougall (ARM) and stands out among Southbank's Arts Precinct with its use of three-dimensional geometric figures on the façade, inspired by the paintings of American abstract expressionist Al Held.

The theatre was constructed alongside



The unique facade of Southbank Theatre has become a renowned feature of the Arts Precinct over the past 10 years.

the Melbourne Recital Centre, which was designed by the same architecture firm.

Southbank Theatre will also be opening its doors to the public on July 27 for *Open House Melbourne*. The day will include backstage tours and an exhibition of costumes, props and set models in the foyer.

The event will also include a free public talk from Ian McDougall from ARM Architecture alongside fellow architects Meaghan Dwyer and Kerstin Thompson to discuss the evolution of the Arts Precinct and the art of designing cultural spaces.

mtc.com.au/Southbank10

Hidden Faces South Wharf

The popular *Hidden Faces* exhibition has returned to South Wharf, showcasing the best of portrait art at Pan Pacific Melbourne until October 3.

Following the spirit of the French *Salon des Refuses*, the event features a number of portraits by Victorian artists that were not hung in "official" exhibitions. Most of these paintings were submitted to national portrait prizes, such as the Archibald Prize, but either weren't featured or were rejected.

This year's exhibition will showcase works from a number of artists including Raelene Sharp, Hung Fu, Jacquie Blight, John Mandich, Vicki Sullivan, Ron Penrose, Todd Simpson, Janne Kearney, Peter Ferrier, Lisa Wang, Jim van Geet and Steve May among others.

The subjects of the portraits are diverse too, with paintings of performers like Marta Dusseldorp and Ezekiel Ox, sporting icons like Kate Ross and Nathan Lyon, and professors Damien Kingsbury and Jenny Hocking.

The display will be presented in the lobby at Pan Pacific Melbourne from June 3 to October 3. The exhibition is free.



The
Southbank
Residents Association

invites all Southbankers to its
Annual General Meeting

In this meeting you will:

- Hear from special guest speaker Hannah Clement, Melbourne Arts Project Director for Development Victoria
- Get an update from SRA on this past year's advocacy and wins for the community
- Elect a new Committee for the year 2019/2020

SRA welcomes any interest in joining next year's Committee. Please note that in order to stand for election, or to vote at the AGM, you will need to be an SRA member. Membership is \$10/year. You can sign up on our website at any time or on the night.

Date: Thursday, 25 July 2019

Time: 6:15pm registration, 6:30pm start and 8:30pm end

Location: Malthouse Theatre (Tower Room), 113 Sturt Street, Southbank

The Malthouse Theatre Café will be open prior to the AGM for refreshments



CITY OF MELBOURNE

Contact details: info@southbankresidents.org.au, www.southbankresidents.org.au
This free community event is an initiative of the Southbank Residents Association.
Event able to be held with assistance of a City of Melbourne Council community grant

Whittles

Owners Corporation Management Services



Established in 1968 Whittles is the largest Australian owned strata management company and widely recognised for its experienced staff and the provision of professional strata management services nationally. With specialist expertise in prestigious high-rise buildings, marinas, commercial and residential, Whittles is proud to be part of Southbank in Melbourne.

whittles.com.au

For superior owners corporation management services,

contact the Docklands dedicated team

Whittles, Level 1, 838 Collins Street, Docklands VIC 3008

T 03 8632 3300 E info.docklands@whittles.com.au

THEARTS PRECINCT

STAGE FRIGHT

THE YABBA STILL STRIKES A CHORD

By Meg Hill

It's fitting that Declan Greene's *Wake in Fright* adaptation is running in the Malthouse's Beckett Theatre. Samuel Beckett would presumably approve of Greene's minimisation. His adaptation is performed by only one actor – Zahra Newman.

Other Beckett-like qualities were already present in the novel and film: the barren, apocalyptic natural landscape, the repetitious dialogue and the elemental sense of being stuck in a hamster wheel.

But Greene's one-person innovation isn't a character minimisation. If anything, Greene has added a character to the story.

Zahra Newman switches between speaking as narrator, as each character and as herself. She tells the audience, breaking the fourth wall at the beginning of the performance, how often one of *Wake in Fright's* repetitious pieces of dialogue – "where are you from?" – appears in her own life.

"I'm Australian," she quips back. She's not white and speaks with a slight accent. This, in itself, escalates *Wake in Fright's* already abrasive commentary on white masculine Australian culture.

Main character John Grant is an English teacher from Sydney serving out a slavish post in Tiboonda (a town with approximately three buildings) to pay off his student debt.

On his way to Sydney for the holidays he plans to spend one night in Bundanyabba – "the Yabba" – where his flight leaves for Sydney. In the mind-numbing heat, he goes to the pub for one cold beer.

But the local hospitality never allows just one beer. During a deliriously boozy, torrid night Grant is introduced to the Yabba by the menacing local cop with a sunburnt nose. He loses all his money trying to win his student debt balance playing two-ups.

What ensues is a nightmare as Grant is pushed and pulled around the Yabba, alternately succumbing to it and struggling with it, and ultimately going mad.

It's hard to describe *Wake in Fright's* shiver-inducing effect, comprised partly of the filthy, sweating locals; the omnipresent violence that leaks into the primitive and fragmented sexual scenes, or the gaping hole where the Indigenous population should be.

Beer is constantly pouring, and the pretence of Aussie hospitality used

systematically as a method to attack outsiders.

When Newman begins her performance, she takes off the mascot suit she'd been stumbling around in as the audience filed through and introduces herself. Soon she begins to talk about Broken Hill.

The author Kenneth Cook largely based Boondanyabba on his time in Broken Hill. Director Ted Kotcheff's screen adaptation was filmed there.

It makes its way into the stage adaption as Newman tells us that lead poisoning is epidemic in Broken Hill – particularly among children and especially the Indigenous population.

Whole sheets of lead dust are blown over the town from the open cut mines that surround it and employ most of the population.

The mascot from the beginning is Lead Ted Junior – a real Government solution to lead poisoning, he teaches children to wash their hands after playing in lead-contaminated dirt.

It's an unexpected start used to prompt the audience, from the very beginning, to connect the work's themes to modern Australia.

Newman personally hands earplugs to any audience members who respond to her cue: if you have sensitive ears, you'll need

them. The use of sound is intrinsic to this adaptation, you can hear Grant's, or just as likely the Yabba's, heart beat during pivotal moments like the two-up game.

Projections are similarly important. "TAILS" flashes up on the screen while Grant plays two-ups, until he flips a "HEADS" and loses it all. The adaptation of the famous "roo-shooting" scene draws heavily on lights and projections too.

Adaptations are a balancing act and almost impossible with a cult classic, but this one somehow strikes parity. The changes made succeed in drawing the original themes out into the 21st century.

One legend about the film adaption (there are many) is a story from one of its first screenings. When it ended, a man apparently stood up and shouted: "that's not us!"

At the end of Newman's performance there was only clapping. The last thought provoked is something about dissonance: if we've come to accept that it is us, how can it still be true?

***Wake in Fright* is running at the Malthouse until July 14.**

Photo: Pia Johnson.

performancemedicine
physiotherapy. myotherapy. remedial massage

Suite 2, 135 Sturt Street, SOUTHBANK VIC 3008
03 9686 2373 www.performancemedphysio.com.au

Mention this ad when booking
your appointment to receive a
massage ball on us*

Valued at \$15

performancemedicine



*Valid until 31.07.2019
1 massage ball per person
www.performancemedphysio.com.au

Signs of life in a white cube

By Rhonda Dredge

The opening of Australian Centre for Contemporary Art's (ACCA) latest exhibition *On Vulnerability and Doubt* was an emotional affair. People clearly love the gallery and were letting their hair down, speaking up and considering new ideas.

A small group was gathered around an animation of an inflatable penis, watching it perform.

"It's so funny," said one bystander.

Next to the penis was another animation of a man in bare feet going repeatedly up and down escalators, before being battered to death by a mob.

This sounds gruesome but the drawing was amusing and the catalogue referred to these works by Iranian-born artist Tala Masani as social rituals that satirise conventions of masculinity.

Praise should be given to those brave individuals who wrote the catalogue for how



difficult it was to put words to what amounts to a story-board style of presentation.

There's no denying that the penis in *The Crowd* was causing embarrassment as it landed on a group of stick figures.

They were obviously quite puzzled by its sudden appearance out of the sky.

Fantasies are not that threatening, hence the charm of these works. The penis was pale pink and vulnerable before it was inflated.

The paintings by Brent Harris, which showed the penetration of the body of Christ by the probing fingers of St Thomas (Doubting Thomas), were more off-putting.

These were the most explicit of the local and international works in this exhibition.

Some viewers were shying away from Harris's *Borrowed Plummage* paintings and returning to the little stick figures caught in their social rituals.

Masani has moved from Iran to the United States and Julie Ewington, who wrote the

catalogue essay on her work, suggests that phallogocentric privilege is her topic.

The men were repetitively engaged in useless activities but is that a privilege?

Andrea Büttner's series of monochrome relief prints were far safer. They depicted sketchy figures bowed over with their hands held out.

A professor from Kassel, home of the *Documenta* art exhibitions, Büttner was perhaps dealing in *Beggars 2016* with the difference between pathos and doubt.

Doubt makes a viewer stop and consider a proposition whereas pathos evokes empathy and is easier to manage.

Mimmalisa Trifilo, an education officer at ACCA, was at the opening, and luckily she had a few thoughtful things to say about negative thoughts and emotions.

"They're not really negative. They're critical," she said. "It's just that we get defensive when something gets our back up but it brings truth."

"I'm very much interested in art being sincere. That's what I thought I'd find here. You have to show signs of life to show vulnerability and that's difficult in a white cube."

On Vulnerability and Doubt runs until September at ACCA.



Much Ado About Nothing

By Sarah Bartlett

Bell Shakespeare returns to Southbank this July with an evocative re-imagining of Shakespeare's classic comedy *Much Ado About Nothing*.

Presented by Arts Centre Melbourne, *Much Ado About Nothing* delivers a razor-sharp battle of wits between the bickering Beatrice and Benedick, who prefer to exchange sassy insults betraying their true love for each other.

Claudio and Hero are madly in love but Claudio is consumed by his own jealousy and humiliates Hero.

Much Ado About Nothing will explore the themes of searching for identity as well as the knowledge of one's self within a male-dominated world.

The contemporary production is directed by Bell Shakespeare's associate director James Evans (*Julius Caesar*) and starring Zindzi Okenyo (*Antony and Cleopatra*, MTC's *An Ideal Husband*) as Beatrice and Duncan Ragg as Benedick.

This cast is supported by renowned comedian Mandy Bishop, *Home and Away*-alumni Will McDonald, Vivienne Awosoga, Danny Ball, Marissa Bennet, Suzanne Pereira, Paul Reichstein and David Whitney.

Director James Evans said he was thrilled to direct the 27-venue national tour once again after directing last year's national tour of *Julius Caesar*.

"This is the original 'from hate to love' romantic comedy that we've seen repeated in films and plays since Shakespeare's time. But beneath its sparkling wit and hilarious characters, there is a dark conflict that drives this play to the edge of tragedy," Mr Evans said.

5x5x5

By Sarah Bartlett

Arts Centre Melbourne's award-winning mentorship program *5x5x5* returns this month.

With five original compositions created by five upcoming composers, the program provides a unique artistic experience in the heart of our Arts Precinct.

5x5x5 provides emerging Victorian composers with the opportunity to increase their skills, professional networks and public profiles.

The five participants, under the direction of artistic mentor Dr Calvin Bowman, each created an original composition of five



Imogen Cygler.

minutes' duration.

The compositions were recorded at ABC Studios Southbank and performed with the support of the Melbourne Youth Orchestra.

The *5x5x5* mentorship program began in 2013, with the idea of creating a unique artistic experience while traversing through the concealed places within Arts Centre Melbourne. The 2019 lineup can be heard as you walk through Hamer Hall and The Spire throughout July.

Southbank Local News spoke to one of the composers Imogen Cygler, who wrote and composed *Beyond the Sound*, one of the songs

featured in the upcoming program.

Ms Cygler said that the selected Southbank locations of Hamer hall and The Spire inspired *Beyond the Sound*.

"The area where the music is being played was the biggest inspiration, it's a beautiful part of Melbourne and I dropped in a lot of lyrics about the surrounding area," Ms Cygler said.

Ms Cygler worked on the composition for about a month and wrote both the lyrics and the instrumental parts of the song.

"I wrote it during a busy period, and I would chip away at it whenever I was in the mindset. I was kind to myself, and never forced myself to write. I developed the song as one block, originally it was just piano and voice," Ms Cygler said.

Beyond the Sound encourages listeners to be kind to one another and listen and Ms Cygler said it was a great opportunity for emerging artists.

artscentremelbourne.com.au/learn/artist-development/5x5x5



OsteoStrong helps improve:

- Bone Density
- Balance
- Strength
- Joint and Back Pain
- Long Term Blood Glucose (HbA1c)

Only one 10-minute session a week, no sweat, normal clothes.

OsteoStrong South Melbourne
378 Clarendon St, South Melbourne
P: 7004 1284
E: sthmelb@osteoststrong.com.au

Contact us for a Complementary Session



Doric String Quartet

TUE 11 JUNE 7PM
SAT 15 JUNE 7PM

Elisabeth Murdoch Hall
Melbourne Recital Centre

musicaviva.com.au/doric or
call 1800 688 482 (no booking fees)





ROD CEBALLOS

Harnessing talent for a purpose

By David Schout

Through a partnership with Amnesty International, freelance photographer and Photography Studies College (PSC) tutor Rod Ceballos has formed a program where students can “practice with purpose”.



Selected work from Rod Ceballos's collection.



Rod had always been a keen photographer, but it wasn't until a “restless” period working in middle management that he really discovered his love for it.

After moving to Melbourne from Chile with his family at the age of the 10, he would finish his schooling and study design – and then photography – here in Melbourne.

But upon finding love during a trip to Venezuela, Rod would soon move back to South America.

It was there, in the humdrum of daily life, that he picked up the camera again.

“I was getting restless, I needed something else,” Rod explained.

“I had mentioned to people that I studied photography and someone suggested I did wedding photography. I was initially very hesitant – when I got married my wedding photographer didn't even turn up!”

After some convincing, and an erasing of his own wedding day scars, he came around to the idea.

“I looked at some of the wedding photos being taken and thought ‘well, there's no way I can do worse! I don't want that to come across as arrogant, but let's just say they weren't as good as wedding photos in Melbourne.”

So, he took on the task, to swift and positive feedback.

Rod would eventually return to Melbourne at the end of 2014, and soon found work as a photography editor for a community newspaper in the city's inner-north.

After working with a number of talented yet unreliable volunteer photographers in the role, he turned to PSC for a more constant supply of student photographers keen for experience in local news.

The experiment proved a success, and his partnership with PSC has grown ever since.

He now combines his freelance photography career with work as a tutor at the college.

Perhaps most importantly, however, he has established an internship program between PSC and Amnesty International where students are tasked with capturing different Amnesty events.

The *Amnesty International Photographers Network*, under Rod's coordination, gives students the chance to document important events organised by the human rights group.

“That's one of the things I'm most proud of,” he said of the network, which was established within the last 12 months.

“Growing from experience in local news I saw the benefit that community-based organisations can have for developing people in different ways, and this does exactly that.”



The Amnesty International Photographers Network

The first group of student photographers and videographers have finished their nine-month internship, with some continuing their work with Amnesty.

Rod paid tribute to the partnership.

“One of the things I've always loved with them (PSC), they have always been eager to give their students as much experience as possible. They see the value in that and additionally, Amnesty get value in having photographers at their events.”

He said among his work, community-based projects gave him the most professional fulfilment, and he was glad he could work with students on something.

“The benefit of the program is to give students the space to learn something new, but it also allows them to do work that means something. It's practice and development with a purpose.”

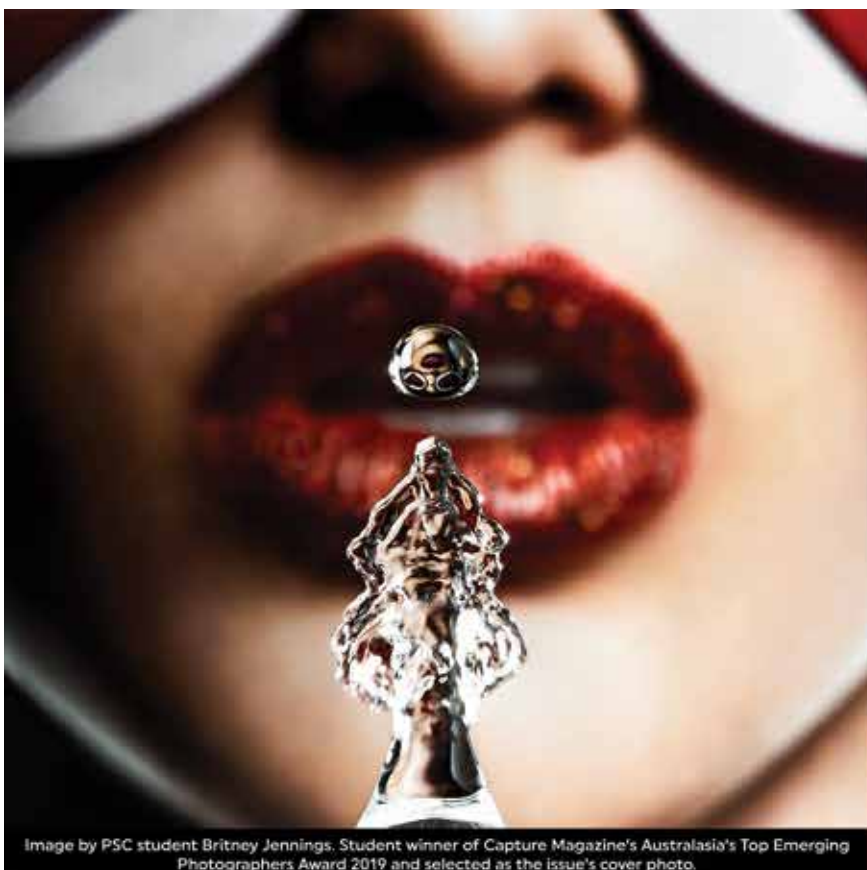


Image by PSC student Britney Jennings. Student winner of Capture Magazine's Australasia's Top Emerging Photographers Award 2019 and selected as the issue's cover photo.



Open Day | Sunday 4 August | 10am till 4pm

PSC is student centred, career focused and industry connected. Our impressive national and global networks and connections benefit our students and graduates, providing them with the skills and industry focus for career success.

Register now for a schedule of events

www.psc.edu.au/open-day

All ages and skill levels welcome. Full time | Part time | Study day or evening

MASTERS | DEGREES | DIPLOMAS | CERTIFICATES | SHORT COURSES

Find out more

PSC.EDU.AU +613 9682 3191

info@psc.edu.au | 65 City Road, Southbank VIC 3006

EVENTS



CONTOURS OF SONGLINES

July 18 - Elisabeth Murdoch Hall
Widely celebrated as one of Australia's greatest living artists, Kalkadunga man and didgeridoo virtuoso William Barton's performance in Elisabeth Murdoch Hall this July shines a light on the power of Indigenous storytelling and music, transforming the role of the didgeridoo while preserving its cultural significance.
melbournerecital.com.au



DISPOSABLE

July 31 - Aug 3 - Testing Grounds
Fatberg: an attempt by artists Arne Hendriks and Mike Thompson to create the largest ever Australian fat deposit.
Sewer Soaperie: Chinese-Filipina interdisciplinary artist Catherine Sarah Young takes grease from various sources, sterilises it and turns it into luxury soap.
melbourne.sciencegallery.com



SHAKESPEARE IN LOVE

July 15 - Aug 7 - Playhouse
Shakespeare in Love won seven Oscars in 1998 when Gwyneth Paltrow and Joseph Fiennes stole our hearts on screen. Now, Tom Stoppard and Marc Norman's Academy Award-winning script has been transformed by Lee Hall (*Billy Elliot*) into a side-splitting stage comedy with a stirring love story at its heart.
artscentremelbourne.com.au



STORM BOY

Until July 20 - Southbank Theatre
This much-loved story has enthralled generations of Australians both on the page and on screen. Now, Colin Thiele's heart-warming classic *Storm Boy* is brought to life on stage in a theatrical event filled with unforgettable characters and a collection of astonishing life-size puppets.
mtc.com.au

AUSTRALIAN MUSIC VAULT

Ongoing - Arts Centre Melbourne
The Australian Music Vault features a free, immersive exhibition showcasing Australian music, innovative digital participatory experiences and iconic objects from our Australian Performing Arts Collection.
australianmusicvault.com.au

ALEXANDER CALDER: RADICAL INVENTOR

Until Aug 4 - National Gallery of Victoria
Radical Inventor presents approximately 100 sculptural and pictorial compositions made by renowned American artist Alexander Calder (1898-1976), drawn from private and museum collections in North America, including a substantial number of works lent by the Calder Foundation, New York.
ngv.vic.gov.au

ACCA WORKSHOP SERIES: DRAWING

July 31 - ACCA
Join artist Darcey Bella Arnold for an evening of guided drawing activities using a variety of materials. In this hands-on making workshop you will explore fundamental techniques and develop skills in observational and experimental approaches to drawing. Accessible for all skill levels. All materials provided. BYO apron.
acca.melbourne

BACKSTAGE TOUR

Sundays - Arts Centre Melbourne
Over 90 minutes, specially trained guides reveal the secrets of Arts Centre Melbourne's theatres. You will gain unique access to backstage rooms, hidden passageways and technical contraptions unknown to anyone but our production crews and performers.
artscentremelbourne.com.au



SOLARIS

Until July 21 - Merlyn Theatre
Tarkovsky and Soderbergh have tackled Stanislaw Lem's classic sci-fi novel on screen. Now, Matthew Lutton directs a script by master Scottish writer David Greig, as Malthouse Theatre and The Royal Lyceum Theatre Edinburgh bring this world-premiere thriller to the stage.
malthousetheatre.com.au



PSC OPEN DAY

Aug 4 - Photography Studies College
Be informed. Be inspired. Be entertained. Join us at Open Day. Explore full time and part time course options at Australia's most awarded photography college. All ages and skill levels catered for. Study day or evening. Download a schedule of events.
psc.edu.au/open-day



ON BEING AN ARTIST

July 17 - ACCA
Join us for a panel discussion about self-doubt, imposter syndrome and the complexities for artists around putting themselves and their work on display and creative practice in the face of these vulnerabilities. For this panel, exhibiting artist Charlie Sofo is joined by artists Kevin Chin and Jessie Scott and moderators from the *Pro Prac* Podcast Nicole Breedon and Kiera Brew Kurec.
acca.melbourne



THE VERSATILE SAXOPHONE

July 22 - Primrose Potter Salon
Saxophonist Justin Kenealy and pianist Coady Green unite as Duo Eclottico, two award-winning Australian artists showcasing a dazzling virtuosic repertoire of saxophone and piano in a rarely heard combination of instruments.
melbournerecital.com.au

SOUNDPROOFING WINDOWS

FOR BODY CORPORATE AND HERITAGE LISTED HOMES AND APARTMENTS



NO NEED TO REPLACE YOUR EXISTING WINDOWS TO ACHIEVE DOUBLE GLAZING

Stop Noise will come to your home for a FREE demonstration and show you how we can reduce noise by up to 70% coming through your existing windows.

Stop Noise secondary glazing system is equally as good as replacement double glazed windows for your thermal insulation and twice as good for reducing noise. There is simply no better option. Save money on your energy bills and get a great night sleep.

Stop Noise is a trusted family owned and operated Melbourne based business since 1995.

VISIT US ONLINE! WWW.STOPNOISE.COM.AU



Call today to organise a free assessment of your windows & doors
1800 880 844 info@stopnoise.com.au

Office & Showroom- 15 Industry Blvd, Carrum Downs 3201



The Australian Ballet wins Achiever Award

The Committee for Melbourne's prestigious 2019 Melbourne Achiever Awards were announced on May 23, with the Australian Ballet nabbing a top spot.

As one of the world's most renowned ballet companies that has operated for over 50 years, The Australian Ballet was awarded the Melbourne Achiever Award for an outstanding organisation.

Previous winners include the late Dame Elizabeth Murdoch AC DBE, Ron Walker AC CBE, National Gallery of Victoria, VicHealth, Melbourne and Olympic Parks and Naomi Milgrom AO.

Committee for Melbourne CEO Martine Letts said the Australian Ballet dared to be different.

"The Australian Ballet continues to evolve, caring for tradition but daring to be different," she said.

"The recent renovation was 'en pointe' with their Southbank home providing world-class facilities to not only dancers, but the talented sports medicine team, onsite costumiers and staff, which truly showcases their commitment to excellence here in Melbourne."

Australian Ballet executive director Libby Christie said they were honoured to be receiving the award and "delighted to be acknowledged as a Melbourne-born company which has contributed to and loved being based in this wonderful city for the past 56 years".

"From the formation of the company in 1962 - when we worked out of our somewhat modest first ever studio in East Melbourne - to today when we are based in our newly refurbished Primrose Potter Australian Ballet Centre in Southbank, we have been proud to call this city home as we travel around Australia and the world each year."

"Melbourne and The Australian Ballet attract Australia's most talented dancers and that inspires creativity, a place where extraordinary people can dream and achieve."



Victorian Governor Linda Dessau, Australian Ballet executive director Libby Christie and Committee for Melbourne chair Scott Tanner at the awards ceremony in May.



Nina Taylor, Casey Wagner and Spud the dog.

Brew grant

By Sarah Bartlett

Local Montague-based microbrewery Westside Ale Works has received a \$5000 grant from the state government.

Member for Southern Metropolitan Region Nina Taylor visited the business last month to present the grant to owner Casey Wagner, who was one of almost 250 food, drink and produce companies from around Victoria to benefit from the government's Artisanal Sector Program.

Westside Ale works is a microbrewery located at 36 Alfred St in the Montague Precinct, which brews a range of beers that are sold on site. Locals are able to observe the production process, taste a range of beers and meet the brewers.

The \$5000 grant will help the local brewery with investments in commercial grade keg-washing equipment, which will speed up the washing process and improve hygiene practices.

Ms Taylor said that she was pleased to be able to support local producers like Westside Ale Works.

Next step for Green Spine

By Alex Dalziel

Developer Beulah International is finalising the design of its Southbank Green Spine twin-tower proposal following the completion of a "global study tour".

Beulah hosted Dutch architecture firm UNStudio and Melbourne-based Cox Architecture on a 15-day tour of seven cities, looking at some of the world's best examples of architecture and commercial developments. Cities visited included Shanghai, Hangzhou, New York, Singapore, Bangkok, Tokyo and London.

The design teams met with the chief architects of the buildings, were given a tour and provided a number of insights to be used in finalising its own plans for *Green Spine*, which is yet to be submitted to the state government for approval.

Some of the buildings the team visited included Tokyo's luxury retail space, *Dover Street Market*, London's Bloomberg Headquarters, and Singapore's 1000-unit multi-residential *Interlace Apartments*.

At each pitstop, the team was exposed to various design styles, which it believed would influence each component of the Southbank development, including hotel, residential, retail and wellness.

Beulah International executive director Adelene Teh said the extensive tour saw the project team embrace global urban master planning and architecture learning, as it worked towards delivering its own world-class precinct in Southbank.

"By visiting various projects overseas



The study tour is led through the Park Hyatt in Bangkok.

we were able to truly understand how development can positively change the urban fabric of a city. The way in which other urban cities have approached regeneration of urban areas is something we can learn from," Ms Teh said.

"Our vision is that it becomes a true vertical city with something for every single person in Melbourne, both visitors and residents. We want to offer an unprecedented world class multi-use offering for the city."

The tour comes after UNStudio and Cox Architecture won a design competition hosted by Beulah for the \$2 billion project on the BMW Southbank site last year.

The development, which will sit on the corner of Southbank Boulevard and City Rd, was conceived as an extension of the City of Melbourne's new Southbank Boulevard linear park currently under construction.

At 356.2 metres tall the proposed building would become Australia's tallest tower. The mixed-use residential and commercial development also proposes space for public programs, a 5-star hotel, an entertainment centre and technological display centres.



Patient Wolf founders Matt Argus and Dave Irwin.

New local distillery

By Sarah Bartlett

Independent boutique gin producer Patient Wolf Distilling Co. will open its doors in Southbank this September.

The opening of the distillery will see Patient Wolf become the largest independent distillery in Victoria.

Patent Wolf, currently located in Brunswick, is known for its handcrafted gin production.

Patent Wolf co-founder and distillers Matt Argus and Dave Irwin are currently renovating an industrial warehouse at 34-36 Market St, an inner-city side street located along the border of Southbank and South Melbourne.

Patent Wolf's new venue will provide the opportunity for Southbank residents to go behind the scenes of the distillery and take part in master classes on the distilling process.

Take more care with your insurance

Either confess your sins to the insurer, or risk your policy being rendered as "junk insurance".

Of all the issues being raised in the public eye following the evacuation of Mascot Towers in Sydney due to structural engineering concerns, one issue in particular is troubling me greatly.

The owners corporation (OC) held a policy of insurance for alternative accommodation to be paid out should there be such an event that triggered the claim.

However, the insurer denied the claim on the basis that the OC hadn't disclosed the full extent of the structural engineering concerns to the insurer when the policy was renewed.

Given that there are 122 apartments in the block (at a cost of \$200 per night for alternative accommodation) the insurer is saving itself nearly \$25,000 per day (and over \$400,000 at the time of publishing this article).

Because of the insurer's stance, the NSW State Government has made the

extraordinary step of offering an interest-free loan to the residents to cover their alternative accommodation, but there is no guarantee this will be provided to any other building should this happen in the future.

What will rankle with each and every owner and resident in the building is that they have paid a high sum of money for their insurance premium, but because of the insurer's stance they have been left high and dry and without insurance coverage at this very important time.

And here in Melbourne, another residential high-rise building overlooking Southern Cross Station was evacuated last month due to an issue that short-circuited the building's power and heating. There is no word yet as to whether the insurer is going to accept that particular claim for the residents' alternative accommodation costs, as this particular claim is still being researched by the insurer.

Elsewhere, in Cannonvale, Queensland, an OC suffered extensive damage as a result of tropical cyclone Debbie in March 2017. The insurer had, only a few days before the cyclone, issued a residential strata insurance policy, as it had been up for renewal.

After the cyclone damage and after the claim had been notified, it became apparent

when the insurer searched records that there may have been pre-existing defects in the building to the common property eaves and soffits, as well as to the trusses and tie downs of the building.

The insurer claimed that the non-disclosure of these defects by the OC at the time of renewal meant that the insurer could reduce its liability to "\$nil" based on non-disclosure and misrepresentation.

This matter is now being determined in the Federal Court, to test whether insurers can reduce their liability to nil if an OC has not disclosed material facts and circumstances about their building, pursuant to Section 28 of the *Insurance Contracts Act 1984*. Or, whether an insurer is obliged to nevertheless process the remainder of the claim, and reduce the total by a certain percentage or formula.

There is an emerging pattern of evidence that is suggesting that insurers are seeking to decline major insurance claims on the grounds of non-disclosure of matters that might heighten the building's risk.

In my view, committees need to ensure that when the OC manager is renewing insurance, it should insist on a meeting with the broker, OC manager and committee (and take notes at that meeting) so that each and

every relevant matter can be disclosed to the broker. If there is not clear evidence of this process, there is every chance that in the event of a major claim, the building might not get its claim approved.

The practice of many OCs is for the broker and the OC to simply "arrange" for insurance between themselves. Often, the entire arrangement is simply done by exchange of email or over telephone. In my view, this practice needs to cease. At the moment, insurers get to have it both ways, by acting "casual" when it comes to arranging insurance renewals, but then act formally and forensically when it comes to processing the claims that arise.

OC managers are indemnified by the OC if they don't manage this process properly, so the only guarantee that an OC has that it can be confident of insurance coverage is for the committee to have direct input and oversight.



Tom Bacon

Tom Bacon is the principal lawyer of Strata Title Lawyers.

Tom@stratatitlelawyers.com.au

Letters to the Editor

Taxi chaos

Thanks for keeping up with interesting reading on a variety of subjects and issues in the *Southbank Local News*.

I was reading in the current issue about "Taxi chaos" near the corner of Whiteman St and Clarendon St near Crown and thought I should write to you regarding our area's problems.

I've been contacting police, Melbourne City Council and the Taxi Directorate about the taxi problems we have at the corner of Riverside Quay and Cook St, Southbank, which leads up to the Langham Hotel. Same problems as what your previous reader was mentioning at Crown.

They often double- and sometimes triple-park and park illegally in loading zones, no standing zones in Riverside Quay and across our driveway in Cook St.

There is a clear sign "No taxis to stop in Cook St", but sometimes there are four or



five lined up in our street causing all sorts of traffic problems.

As mentioned, I've reported this a number of times saying if something isn't done about it, there could be a serious accident.

Unfortunately, that happened on Friday June 7 at 2.40pm on the corner of Riverside Quay and Cook St.

As I was about to cross the road a taxi took off very fast from blocking my driveway and hit a pedestrian only two metres away from where I was crossing on foot.

We had to call police and an ambulance, as the pedestrian couldn't get up.

My wife, while driving home, has nearly been hit with a car crossing onto the wrong side of Riverside Quay because taxis were holding up the traffic.

You would think the council or Taxi Directorate would step in and do something but they seem to say it's the other one's problem and they need to attend to it.

I wonder what will be done before we have a more serious accident and someone gets killed.

Richard Hunt

Riverside Quay Southbank

Southbank sun rise

I took these photos this morning as the sun was rising and hitting a building. Just thought you may like them.

Kind regards

Megan



Send your letters to news@southbanklocalnews.com.au

colour

Sunday 4th August

10am Thanksgiving Celebration
Single morning service only
followed by refreshments
Wear your favourite colour
No Melbourne black!

Every other Sunday

9am Traditional worship with communion
10:30am Sunday School during school terms
11am Informal worship with communion
6pm Sunday Night at St Johns
Informal contemporary worship
hosted by Lutheran Students and Friends



St Johns
Southgate

20 City Road Southbank Telephone 9682 4995 www.stjohnssouthgate.com.au

St Johns Southgate

Why, oh why, can't we?

Lately I've been singing our two-year-old daughter, Genevieve, to sleep.

She's been needing a little extra tender loving care, having been somewhat displaced by her understandably needy three-month-old brother, Hugo. So, lullabies have been abounding at bedtime, the repertoire varying but always coming back to Genevieve's current favourite, *Somewhere Over the Rainbow*.

The other night, after singing what seemed like every song I know, I was starting to think that she might have drifted off. She'd stopped wriggling, was completely still, breathing slowing and had her eyes closed. Even so, I thought I'd better just finish off *Somewhere Over the Rainbow* one last time – just to be safe.

In more hushed tones this time, I sang the second verse, "Somewhere over the rainbow, bluebirds fly. Birds fly over the rainbow, why, oh why, can't I?" At that, Genevieve sat bolt upright, and in what one might call an outside voice, blurted, "Because you don't got wings! How many times do I have to tell you!" I couldn't help but laugh before having another go at getting her to sleep, and sleep she eventually did.

Certainly, there'll be a time and a place for a conversation with Genevieve about poetry, metaphor and so on, but she got me thinking. Sometimes us grownups do need to be told how it really is.

At St Johns Southgate, our 11am services include a time of brainstorming about what we, as a congregation, might pray for in worship. At a recent service, a child of the congregation requested that we pray for the natural environment – and our diligence in regard to reducing, reusing and recycling for the good of the planet. I must admit, I was more than a bit blown away by the wisdom of the request. It brought home for me the need to listen more closely to the young. Yes, sometimes the young really do need to

tell us grownups how it is. And we need to listen. After all, we can't very easily fly over the rainbow and find a new world to live on once we're done raping and pillaging this one.

One young person who understands this well is Greta Thunberg. She's the sixteen-year-old Swedish school student who started the School Strike for Climate. She understood the reality of the desperate situation we're in, so she started skipping school to sit on the steps of parliament demanding further action to address climate change. The School Strike for Climate is now a global movement. There was one such strike here in Melbourne in March and another is planned for the September 20.

At a recent middle school graduation assembly, a school principal said some humble, and I think necessary, words to the class moving up. He said: "We need you, as a generation, to not necessarily follow our lead." I couldn't agree more. But more than simply waiting for the next generation to find a way forward, we need to listen to what they have to say now. We do need to give the young permission to correct us, to set us straight on environmental issues – after all, it's going to be their world long after today's adults make their last carbon footprints. Caring for the environment – what Christians might refer to as good stewardship of God's creation – needs to become more central to who we are, what we do, and where we're going, regardless of creed or worldview. I, for one, would like to see a few more bluebirds and rainbows. Let's listen to the young and make that future possible!



Tom Hoffmann

Tom Hoffmann is the pastor at St Johns Southgate Church.
www.stjohnssouthgate.com.au



Metro Tunnel



Construction of Anzac Station

Metro Tunnel works continue to progress on the St Kilda Rd site that will be home to the new Anzac Station.

On the northern side of the construction site, station box excavation has commenced through the void in the station roof.

Anzac Station is being constructed from the top down whereby the station walls are built first through a series of diaphragm walls – constructed up to a depth of 23 metres – followed by the station roof.

Once the roof is built, excavation continues underneath through a void (or hole) in the roof slab, minimising noise and dust during construction. In the coming months an acoustic shed will be built over this part of the site to support the launch of the tunnel boring machines (TBM).

On the southern end of the work site on St Kilda Rd, construction of piling and diaphragm walls are now complete, and excavation has commenced.

At Edmund Herring Oval on Domain Rd, the home of the new TBM support site, civil works have now come to an end. Approximately 2000 cubic metres of concrete and 200 tonnes of steel was used to build the walls and roads for the various treatment plants that will support tunnelling operations.

For the more information on Anzac Station visit metrotunnel.vic.gov.au

Building on the past

As you travel through the Anzac Station precinct off St Kilda Rd, be sure to check out the new Metro Tunnel heritage hoarding near the Cobbers Monument at the Shrine of Remembrance.

St Kilda Rd has seen its share of construction over the years, from a bush track, to the laying of tram tracks, the construction of the Shrine of Remembrance, through to the development of the buildings that now line this iconic boulevard.

The construction of Anzac Station is the latest activity in this long line of developments.

This heritage hoarding outlines this transformation through text and historic images courtesy of the State Library of Victoria. Images include St Kilda Road in the late 1800s, the procession of the Royal Party including King George and Queen Mary in 1901, electric tramway construction from 1925 and early excavation of the Shrine of Remembrance.

These images are contrasted with images of the Metro Tunnel construction sites along St Kilda Road today.

Open for business

Time Out Café – Federation Square

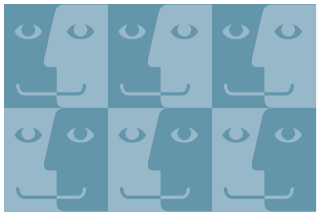
Located in the centre of Federation Square, Time Out offers an international menu 365 days a year. Grab a chair on the outdoor terrace and take in the sights and sounds of the city.

For more information visit metrotunnel.vic.gov.au or call 1800 105 105.



More trains,
more often





FACES OF SOUTHBANK



NICK, 23, CAFÉ MANAGER

It's a testament to how far technology has come along in such a short space of time.



RAGHAV VARMA, 38, HEAD CHEF

It's disgusting. The prices of it are really high, we will never be using Uber Air.



SEHAJDEEP SINGH, 18, UBER DELIVERY

It is for entertainment, some people have a dream to fly in a helicopter. Every person has their own hobbies or interests and some people like those sorts of things.



ANNA DORA, 50, TEACHER

For me who is afraid of heights, no thank you. But for people who want to experience it, it is the future.



KENDA STYLES, 54, PROJECT MANAGER

I think it's interesting. It will take time to become a thing, then they need to build trust in the technology and safety. To be honest, anything that is a reasonable alternative to a \$65 fare to the airport will be good news.



KALVIN REIDY, 48, PUBLIC SERVANT

It sounds pretty interesting. If it can cut down on my travel time on the Monash I would be pretty happy.

Question:

What do you think about Uber Air?

THE MOST EXCLUSIVE ESCORT AGENCY

Paramour

OF COLLINS STREET

- Dinner Companions
- Social Escorts
- Sensual Ladies

Follow us on twitter @paramourescort to see x3 free lingerie pics everyday to your feed!

96546011 CBD - 5 MINUTES TO YOUR DOOR
 たくさんの美しい女性 日本語を話します

Subscribe to our mailing list via our website and See real pictures of our ladies at paramour.com.au

Call or book at rsvp@paramour.com.au MELBOURNE CBD

SWA113E

SOUTHBANK SUDOKU

Last month's Sudoku solution

T	A	N	S	U	K	B	H	O
H	B	U	O	A	T	N	S	K
S	K	O	H	B	N	T	A	U
B	T	S	N	K	U	A	O	H
U	N	A	B	H	O	K	T	S
O	H	K	A	T	S	U	N	B
N	U	H	K	O	A	S	B	T
K	S	B	T	N	H	O	U	A
A	O	T	U	S	B	H	K	N

A variation of Sudoku, with the letters SOUTHBANK replacing the numbers.

The rules are the same as regular Sudoku, each line of the must contain the letters 'SOUTHBANK' as must each 9-square box. This Sudoku is MEDIUM! Good Luck!

H				A				N
	U		O	N			H	
		N				B		
			T	B	O		A	
O	N		U		A		B	K
	A		N	K	H			
		S				K		
	H			T	U		O	
B				O				U

Safety & Security

Apartment living

We each have a role to play when it comes to making our homes, workplaces and neighbourhoods safer.

Things you do when at home or away can make a big difference to your safety and reduce the risk of having your home burgled or property stolen. Southbank has a high proportion of apartment buildings and these residential properties have their own unique safety and security challenges. Residents may have a false sense of security owing to the inability to enter through the front entrance without a fob.

Apartment security is vital to ensure that you, your family, and your possessions remain as safe as possible. To help you make sure your apartment is secure here are a handful of apartment security tips to consider. I have liaised with Victoria Police's experts, the Crime Prevention Officers from Melbourne's Proactive Policing Unit, to compile the following:

Tailgaters: Tailgating is one of the most common security breaches. Do not hold the entrance door open for a person to enter past a secure entry. This could be a thief intending to burgle apartments or steal from letterboxes. Never buzz a person into the building that you do not know for the same reason. Many Southbank residents have become victims of theft due to thieves tailgating on foot and in vehicles through secure carpark entrances. Always ensure that only your car enters the carpark and wait for the security door to close after your vehicle upon entry and exit.

Lock apartment doors: Southbank has experienced a spike in residential burglaries where access has been gained through unlocked front doors – even when residents are home. Get in the habit of always locking your front door when leaving and returning home. Apartments may have a mix of residents and short-stay residents, which increase the number of people who have access to individual hallways.

Letterboxes: Always lock your mailbox and never leave any access fobs or keys to apartments locked in your letterbox. Locks on letterboxes are easily forced by thieves.

Bankcards: Thieves target credit cards and information that could be used for stealing identities from mailboxes. If your credit card is due for renewal, arrange to collect the card from your banking institution. This small inconvenience could save you a much larger one if the card is stolen.

Report suspicious behaviour. If you see someone or something that is out of place or unusual report it to Southbank Police Station on 8635 0900 or to 000.

For more information and security tips follow this link:

police.vic.gov.au/home-and-property



Senior Sgt Alex O'Toole

Station Commander at Southbank Police Station
alex.otoole@police.vic.gov.au

Montague Community Alliance

Montague hosts a community roundtable

On June 18, The Montague Community Alliance (MCA) and the Fishermans Bend Taskforce held the first of what we hope will be regular meetings at the Golden Fleece Hotel in Montague.

The roundtable was initiated to discuss and engage with a small group of representatives from across the Montague Precinct on how the precinct will be developed. It really is the beginning of a seemingly lengthy process, as the Taskforce develop specific "Precinct Plans" across the whole of Fishermans Bend. We thank them for their interest in our views on the basics, and we look forward to hearing more formed ideas as we move forward.

Some key areas of our discussion included:

- Where further open space would be located;
- How mobility around the precinct would be managed (do we need more bike lanes and less parking?);
- How the elderly and those that require cars for mobility will be accommodated;
- A decision has been made to have a green spine along Buckhurst Street; what that could mean for business access and the potential closure of other smaller streets to create street level pedestrian/community presence; and (importantly) ...
- How they [the Taskforce] determine priorities.

Some of the priorities discussed were a pedestrian crossing at Montague and Buckhurst streets intersection, and greater street lighting around the South Melbourne Primary School and surrounding streets.

During the meeting, there was some concern from business about lessening the parking and greening a major street that already had businesses requiring deliveries and vehicle access.

We put forward our community group's priorities:

1. Saving all the bluestone laneways. These are some of the only fine grain left in one of the oldest parts of Melbourne and are a direct link to our history.
2. Naming the lanes and ensuring these names celebrate our precinct's collective history, including our indigenous history.
3. Continuing to work with the City of Port Philip and the Taskforce in creating "Neighbourhood Agreements" that create an opportunity for the developers and the community to support each other. For example, the community not interfering or blocking the developers and their construction companies in doing their work. And the developers and builders ensuring that they don't pile drive or pour concrete on weekends, and that their demolition and building schedules are regularly uploaded on to a website that can be accessed by the local community.

And as a joint idea, the Taskforce and the City of Port Philip locate an



office in each precinct as it is being developed (Montague being the first), manned or womaned by a person available to the community, whose role is to communicate and support the community's and the developer's questions and challenges during this period of growth. We would like to see this happen as a matter of urgency.

We want to thank the Taskforce for meeting with us and taking our opinions seriously and we look forward to continuing our dialogue with them over the next few months.

Meet a Montaguan

One of participants in these discussions is a new and exciting business that has come into Montague over the last couple of years - Westside Ale Works at 36 Alfred Street. Casey Wagner with his

partner Leah Ruppaner are the owners of this bespoke brewery; please meet Casey Wagner; a Montaguan...

I am an American expat enjoying life in Melbourne. I own Westside Ale Works which is an American West Coast style brewery with freshly made to order pizzas and over 30 beers on tap!

My background is hospitality and I spent almost 15 years managing front office operations for Hilton Hotels back in the States and Melbourne. I was looking for a new challenge and craft beer was just now taking off in Australia. I used my hospitality knowledge and home brewer background and came up with the concept for Westside Ale Works. I then left my corporate job and haven't looked back in the past three years of this amazing journey!

What brought you to live or work in the Montague Precinct (MP)?

My partner received a job offer for The University of Melbourne as a professor and they sponsored our family. We chose this precinct because of the proximity to the CBD and a great up-and-coming area with lots of growth potential, as well as established neighbourhoods.

What do you find are the best and/or most interesting things about living or working in MP?

The diversity of the area in terms of what is on offer. There are great markets, restaurants/pubs, beach, pet friendly, schools all within easy access of the city. The commuting life is not for us so it just made sense.

How does living or working in Montague affect your quality of life, including your work?

We have a very healthy work life balance compared to other cities we have lived in. My business is within 3 km of my home and my daughters' school is two blocks away. It allows us to spend more quality time together.

Are there any challenges with living or working in MP?

There is a lot of construction and changes happening constantly as this precinct is being developed. Which ultimately will be great for the area.

If you could change something about Montague life, what would it be?

Even more green space would be great! I love how many parks there are in Melbourne and think this area could have even more!



Trisha Avery

Trisha Avery is the convener of the Montague Community Alliance.
trishavery@bpca.com.au



Southbanker

Coach Kim's "headquarters"

Proud Southbank local Kim Booth, otherwise known as "Coach Kim", refers to his home as "his headquarters".

Originally from Albury-Wodonga, Coach Kim has truly taken to life in Southbank since moving to Coventry Gardens from his previous home in Kensington six years ago.

Southbank hasn't just provided him with a great place to live but has been central to helping him realise his true passion in life: helping people with their careers.

Since launching his own business, Coach Kim's Elite Coaching, in August last year, he said his Southbank "offices" had allowed him to pursue his passion with great success.

"Southbank is the perfect platform for helping people," Coach Kim said. "It's right next to the city but it helps get people out of the city. Anytime I get people outside it's good natural hits of serotonin and that's important for helping people think bigger."

"I enjoy my many offices in Southbank, whether it be the Botanical Gardens or down by the Yarra River. For some narrow-minded clients, I will often take them to NGV to help them unleash their creativity."

"I hate egos; that's when people are stuck in their own way. You need to get out of your own way because that's where all the magic happens."

Having completed a finance degree and forged a successful career in the corporate world from a young age, which included six



years working in London, Coach Kim moved back to Australia in 2011 to marry his then wife, who gave birth to their son Max.

Having since been through a divorce and falling out of love with his corporate career, he said that it was only through hitting "rock bottom" last year that he was able to work out his "purpose and why".

"I was on a fitness camp in Thailand, which I had never been on before and it was day three and I actually broke down," he said. "We'd been training hardcore and

half way through the session I just burst into tears. I was mentally and physically exhausted."

"That afternoon I was at my hotel and I just wrote down everything that I had ever done, experienced, felt and just kept writing. That's when I worked out 'my why'. So, the next day I thought I want to set up my own business. Then I got home to Southbank and set up Coach Kim."

For Coach Kim, that turning point has proven to be life-changing for both himself

and the many people he has been able to help since.

Having found his calling, he has used his skills and expertise from many years working in high-performance roles in the corporate world to help others with their careers to great effect. He also lends a lot of his time to supporting charities and disadvantaged individuals through his work.

From the job seekers and the job haters to the graduates and those keen to climb the corporate ladder, he said his three ingredients to success were the same for everyone: self-awareness, courage and discipline.

And such is his love for his new life, it has taken on an identity of its own here in Southbank.

"Everyone just calls me coach," coach Kim said. "No offence to the northside but the south is my home. I call Southbank my headquarters. Back to my home barracks!"

"Some of my clients' stories are amazing. To take them to a place that they love is very cool."

"Where I help is that I just have the keys to unlock your best version quicker than what you would do yourself. It's having the tools and techniques to surface up who you are and what you stand for." coachkim.com.au

Southbank Residents' Association

A big month

There were two significant items since my last column, and I would like to have gone into them in more detail, but we have limited space.

Firstly, the 2019/20 budget was released by council. I was gobsmacked to see that once again the City Rd upgrade has essentially been overlooked. In our budget submission we argued for more funding, to be told that \$5 million had been allocated. I could only see \$500k for a dog park at the Kings Way undercroft.

In my verbal response to our submission I asked for the council officers to show me where the line items are for the other \$4.5 million. To date, I have not heard from the council officers directing me to these line items. I suspect they aren't there. I have heard that one of the reasons to further delay this project (by the way, it is now into its third year of delay, based upon the timeline given to the community in the City Rd masterplan document) is that there is so much happening in Southbank already with the Southbank Boulevard upgrade and Boyd Park.

While there is lots happening in Southbank, those projects were already identified within the masterplan as running

concurrently with the City Rd upgrade. If anything, with the delays that we have already experienced with City Rd, then I would think that works in City Rd's favour. But, apparently not. In any case, I have not been given any definitive reason why the master plan has the timeline so wrong, nor when funding will be provided. Rest assured, your Southbank Residents' Association (SRA) committee will not let up on this.

I can't help but think the council officers are paying lip service to the residents of Southbank. At last year's budget, Cr Rohan Leppert successfully moved a motion, unanimously endorsed, to improve the communication with the residents of Southbank by creating its own project web page and to update the projects accordingly. Well, the City Rd upgrade project has not had a single update since the masterplan was released almost three years ago, and the Southbank Boulevard upgrade is very haphazard with its updates. On the ground I can see significant development, but no mention online. It's disappointing council officers can't afford the community a little attention with keeping us informed.

And the other big item is the announcement of the successful developer for the Boyd site. There is a lot of history with this site, namely SRA's relentless lobbying to save the entire space for open space instead of selling it to a developer to build yet another high-rise in Southbank. A few years ago, our petition garnered thousands

of signatures in support of retaining the space. While ultimately, we were not successful with retaining this space, we have had a number of wins with how this space will now look. We successfully reduced the development footprint by about 30 per cent and have secured 1000 sqm of public space across two floors. When we realised we were not going to win to keep the space, we demanded the internal space to expand the over-subscribed library and community facilities. We are delighted council took this on board and included it within their tender brief. Interestingly though, the development is now about 30 per cent taller than the previous, failed, developments, yet council have added a boutique hotel, but kept the number of affordable housing apartments at the same number of 40. It is pleasing to know it will achieve a six green-star certification. Council is well-versed with the developer, PDG, through their relationship with the Queen Victoria Market (QVM), Munro site. PDG is certainly a credible and respected developer. I have no doubt they will produce a quality outcome. Council will receive a \$16.5 million windfall from the sale of the land, some \$9 million more than originally anticipated owing to the delays on the previous two failed attempts to develop this site. It would have been nice to see that \$9million spent in Southbank, but instead it will be going to the QVM renewal project to assist with funding there. Overall, while we were unsuccessful at preserving the land

for more open space, we have had several significant wins.

The SRA Annual General Meeting (AGM) will be held on Thursday, July 25 at the Malthouse Theatre (Tower Room), 113 Sturt Street, Southbank at 6.15 for a 6.30pm start. The meeting should go for no longer than two hours. I welcome everyone from the community to attend and hear from our guest speaker, Hannah Clement, Melbourne Arts Project Director at Development Victoria, to tell us all about the planned Arts Precinct upgrade. This is certainly an exciting project and will put Southbank on the map. We will then elect a new committee for 2019/20. If you have an interest in your community and would like to assist on our committee, I certainly encourage you to reach out to learn more about how you can be involved. More importantly, come along to hear what your local residents' association has achieved over the past year and what we have planned for the coming year. You will need to be a paid-up member to vote on the night though. You can join through our website southbankresidents.org.au.



Tony Penna

Tony Penna is the president of Southbank Residents' Association.

southbankresidents.org.au



We Live Here

A Royal Commission into industry scandals

Enough is enough. Every day we read of more apartment catastrophes created by builders with the tacit acquiescence of governments:

- Cladding made of flammable material on thousands of apartment blocks
- Cracking buildings sparking fears of collapse
- Contracts for management mates locked in for decades

Apartment owners continue to be ripped off by an industry destitute of morality in Victoria and, indeed, all over Australia. That's a lot of people caught up in these scandals. For example, one in three Victorians live in a strata title residence, mostly apartments. That's a lot of voters.

Decades of unscrupulous behaviour in the building industry, alloyed with a lack of effective government regulation are starting to take an enormous human toll – so far with little or no consequences for the perpetrators.

The affected apartment owners are the pawns here, suddenly transformed into mortgage prisoners, either homeless or unable to sell, consequently plunged into penury. Home values and life savings have been wiped out.

It gets worse of course, if you follow the money. The fall-out from two decades of "self-regulated" builders have insurers, globally, shunning the entire industry.

Owners have been hit hard with insurance premiums escalating to excruciating levels. And builders, architects, fire engineers,

surveyors, all and sundry connected with the building industry have also been impacted.

Professional indemnity (PI) insurance premiums have skyrocketed up to 500 per cent and some major industry players will not be able to reinsure at all.

Huge Victorian companies employing hundreds of professionals might hit the wall in the next few weeks because insurers are set to decline PI cover all the way back to Lloyds.

Professionals involved in the recent string of headline-grabbing fires and other disasters are obviously being targeted. Some industry players are being stunned with up to seven-figure excess sums imposed, which virtually equates to no cover. And no PI cover means no practice.

You can expect a massive and painful building industry shake-up in the coming months, with enormous knock-on effect for the entire Australian economy.

An open secret - built to demolish

Let's face it – the building industry surely must implode – if it hasn't already.

It's been an open secret, well known at all levels of government and industry, that dangerous and lax building practices were leaving a disintegrating legacy of substandard apartment blocks while bringing short-term profits to builders and windfall gains to the state's revenue coffers.

The widespread knowledge of the industry malaise has been documented and publicly avowed for some years. In 2015, Emeritus Professor Michael Buxton from RMIT university told a We Live Here community forum that an appalling proportion of buildings in Melbourne would have to be demolished within 10 years because they had been built so poorly.

Against the landscape of crumbling buildings there are other dramas playing out. For example, tens of thousands of Victorians also need relief from blatantly immoral building manager contracts. Many unconscionable management contracts have opaque costs, embedded commissions and irrevocable terms of up to 25 years. This inequity needs to be eliminated. While this has been recognised in the exposure draft of the *Owners Corporation (OC) and Other Acts Amendment Bill*, no date has yet been set for when the Bill will be introduced into Parliament.

For apartment dwellers, the building industry has been and remains a national disgrace. We need a Royal Commission to clean it up. A Royal Commission would also give governments the political capital needed to make decisions that look after owners and residents.

Is the party over for short-stays?

Right now, short-stay party damage and violence is continuing unabated. But will it be over soon for long-suffering Victorian apartment residents? We hope so but we won't hold our breath.

Short-term rental watchdog BNBGuard has reported a crazy month of global short-term rental fiascos, including:

- a shooting
- a birthday "riot" with 200 students
- a "graduation party" with 300 students
- a meth lab

We Live Here has also reported on the case here in Melbourne concerning the massive repair bill escaped by a short-term business courtesy of Victorian legislation (the so-called Airbnb Bill), which sheets most of the cost of party damages back to hapless owners.

This case involved a large party held in a luxury penthouse containing a sauna, which set off the fire sprinklers. The resultant flooding extensively damaged the apartment directly below and, months later, the innocent owner-occupier is still counting the cost.

But is there a chance that the short-stay onslaught could be stemmed? Maybe.

VCAT, long the nemesis of OCs, has finally delivered a verdict that supports rather than opposes the right of OCs to control access to a building.

In this case, while confirming that OCs in Melbourne do not have the authority to implement a total ban on short-stay leasing, VCAT did validate other methods of control that could be used, including:

- The legal right for OCs to prevent entry into the building without three days' notice being given; and
- a requirement for a short-stay tenant to take part in a building induction before entry is permitted. The decision also validated the right of the OC to charge a fee for the induction.

While this is a significant step forward for beleaguered OCs trying to curb the excesses of short-term leasing in their residential buildings, it does require a special resolution to be passed for these new rules to be implemented. This can be quite difficult to achieve, particularly for large buildings.

However, it is progress, of a sort, and for that we can be thankful.



www.welivehere.net
emails to campaign@welivehere.net

Health & Wellbeing

What's your attachment style?

There are four primary attachment styles that can influence everything from your romantic relationships and friendships, to how you interact with your boss or lead a team.

Research on adult attachment is guided by the assumption that the same motivational system that gives rise to the close emotional bond between parents and their children is responsible for the bond that develops in adult relationships.

The four key attachment styles

Secure Attachment

Securely attached people tend to agree with the following statements: "It is relatively easy for me to become emotionally close to others. I am comfortable depending on others and having others depend on me. I don't worry about being alone or others not accepting me". They have internalised a strong sense of self-esteem and tend to be

independent, self-reliant, easy-going, and curious adults.

Insecure attachment

The other three types of attachment styles fall under the umbrella of "insecure" attachments, which are categorised by an underlying belief that others are unreliable.

Anxious-preoccupied

People with this attachment type tend to agree with the following statements: "I want to be completely emotionally intimate with others, but I often find that others are reluctant to get as close as I would like", and "I am uncomfortable being without close relationships, but I sometimes worry that others don't value me as much as I value them". Essentially, people with this attachment style deeply fear rejection and worry they're not valued.

Dismissive-avoidant

People with this style tend to agree with these statements: "I am comfortable without close emotional relationships" and "It is important to me to feel independent and self-sufficient". Essentially, they have trouble getting close in relationships and friendships and may struggle to build strong bonds with co-workers and friends.

Fearful or disorganised

People with this style tend to agree with the following statements: "I am somewhat uncomfortable getting close to others. I want emotionally close relationships, but I find it difficult to completely trust others, or to depend on them. I sometimes worry that I will be hurt if I allow myself to become too close to other people."

Essentially, they see the world as a dangerous place and that people are inconsistent and even frightening.

Altering your attachment style

Research tells us that attachment style stays relatively stable over time, which means it isn't really changeable. With this said, however, you can alter your attachment style in the following ways:

1. Start by making sense of your past through the process of writing a coherent narrative (and/or seeing a therapist), to understand how you were nurtured, what your early childhood experiences with your caregivers was like, and what you were like with your caregivers, siblings and close family/friends as a child.
2. Identify the source of your critical

inner voice: Negative self-talk often stems from internalising the words of harsh caregivers or other important figures in your life (an ex, a judgmental friend or a bullying boss). Start to question whether your automatic assumptions are factually true.

3. Find a partner and friendships who have secure attachment styles and disconnect yourself from toxic relationships and workplaces.
4. Learn to identify your emotions and express your needs. Skills like emotional labelling can help you process your emotional reactions instead of feeling ordered around by them. It's also crucial to reframe conflict as a necessary part of any relationship, not a sign of danger or rejection.

Do you have any questions or comments for Rajna? Email her at the address below.



Rajna Bogdanovic

Clinical psychologist

bdgdanovicrajna@gmail.com

History

Southbank Morgue

One of the most important state government buildings located in Southbank is the State Coroner's Office and the Victorian Institute of Forensic Pathology, where medical staff examine bodies and prepare for testimony at a Coronial enquiry as to the cause of death.

Constructed in 1988 to a design by architects Bates Smart, it sits on the corner of Kavanagh and Power streets, on a site that was previously occupied by Streets Ice-cream company for its fleet.

Melbourne had a long history of controversy over the collection and storage of dead bodies. In the early days of the colony, bodies were kept in local hotels until examined, which often caused the local drinkers to move elsewhere! Inquests could also be viewed by the public and reported by newspapers. Primitive morgues were then built on railway land at Princes Bridge and in a yard at the wharf on the Yarra, but were full of fleas, rats (which required the bodies to be covered in iron), badly lit and unsewered, so the drainage from bodies awaiting post mortems at the morgue flowed straight into the Yarra.

After years of bureaucratic wrangling over who was responsible for the role of the morgue, its dreadful condition and its ultimate location, a new morgue was opened in 1888. It was in Batman Avenue, on the edge of Southbank, and next to the site that would be used for the Beaurepaire pool,



constructed in Spanish Mission style in 1935 (and subsequently demolished). But that's a story for another time!

Morgue buildings, by their very nature, are not cheerful but this one was particularly

morbid. The duties of newspapers roundsman took them to a round of government offices, but the one they hated was the morgue, as did the police, families of the deceased and undertakers. It had a

number of controversies over the years, with police charged with robbing bodies and one very fortunate woman, declared dead at a hospital, who woke up just as she was going into the freezer.

After receiving criticism for many years it was renovated and completely remodelled in 1936 and served until 1951 when a new morgue was constructed on the Flinders St extension. It was finally replaced in 1988 by the new Coronial Services Centre, after a change in legislation and a new *Coroners Act 1985*. Victoria at last had a purpose-built building for services to the coroner, courts and community, together with a research facility. It is in Southbank that the numerous complicated tasks associated with care for the dead take place.



Robin Grow

President - Australian Art Deco and Modernism Society
robingrow@ozemail.com.au

SWA113E

Top Class
of Collins Street

Follow us on twitter
 @paramourescort
 for FREE lingerie pics
 everyday to your feed!

たぐさんの美しい女性
 日本語を話します

| Open 24/7
 | Sexy and Wild
 | Genuine Escorts

www.topclassofcollinsstreet.com.au
 (03) 96546351
 View lingerie pics of our REAL ladies
paramour.com.au/escorts/melbourne_escorts/gallery.html

Pet's Corner



Pram-powered princess Sophia

By Alex Dalziel

The nine-year-old cavoodle Sophia is being pushed along in a pram after a big exercise.

Her owners, Nicole and Cassidy, take Sophia into the city once a week and go into the botanical gardens. She can't walk for too long, and so her owners put her in the pram when she starts to give up.

Sophia is a little dog, and wearing her pink doggy jacket with the canopy of the pram pulled over, you could mistake her for a baby.

"She's a princess," Nicole said. "She demands to be treated like a princess. She's very lovable and she loves attention."

This is true, Sophia is a very friendly dog and will lick and play with your hand when you go for a pat. However, when a camera is pulled out the old girl gets shy and refuses to sit still. Such is the life of a diva hounded by paparazzi!

Southbank Sustainability Group

Low environmental footprint

On June 29 we hosted a sustainable family stone painting day with the generous help of our volunteers, local families, and Melbourne Men's Shed.

We invited the community to help us create a colourful, creative, and environmentally-friendly stop-light system, which indicates what is ready for harvesting and what is not.

This was a zero waste, low footprint event since everything we needed for the day was either borrowed or made from repurposed materials. This included the likes of brushes from Boyd's playgroup or individual painter palettes our volunteers created out of old packaging cartons and bottle caps collected from the House of Cards cafe.

Kids were invited to take their palette home along with one of their stone creations. The only store-bought items were non-toxic paints. *Southbank Local News* was part of this day in spirit, with older issues acting as table protectors so that our artists could let loose.

About 25 people participated with children four years old and older and adults of all ages getting involved too. They all had fun expressing their wonderful creative art skills, the results of which are now a permanent



part of Boyd's community veggie garden you'll see spread around in the garden beds.

Stones stop-light colours and what they mean:

- Green: Ready for harvesting. Leafy greens: only harvest a few of the bigger, external leaves. Never take the whole plant unless a sign next to it instructs otherwise.
- Yellow or Orange: Looks ready for harvesting, but needs more time. About one to two weeks away.
- Red: Not harvest-ready soon.

Not all vegies (or greens) are harvested in the same way. Please email us for harvesting instructions so that the plant itself is not damaged and can continue producing food for the community. Only take what you need

for one meal.

The amazing Melbourne Men's Shed has also helped by contributing further harvesting instructions and useful plant information.

Andrew and Ian (pictured with our volunteers) created and delivered rewritable signs for the garden beds using repurposed wood, making their environmental footprint as tiny as possible. You'll be seeing some more Men's Shed creations in the garden soon. They have been an absolute delight to work with and have been very solutions-focused in helping with some of our garden's needs. We are lucky to have Australia's only CBD-situated Men's Shed nearby and we are very grateful for their support. For anyone that is interested in getting involved with their work, we cannot recommend them

highly enough! You can find them at the Level 1 carpark at Federation Square. Visit melbournemensshed.org or email info@melbournemensshed.org.

Our next meet-ups are Saturday July 20 and August 3, 10am at Boyd Community Hub. As usual, we'll start the day talking sustainability initiatives and ideas over coffee and then move on to gardening. No gardening experience needed to join us.

You will also find us at Boyd's first Open House on Saturday July 27 (Assembly Hall), where you can meet some of our volunteers, learn about our community projects - past, present, and future - and tell us what environmental issues matter most to you. Come along and share your ideas for making Southbank more environmentally responsible!

About the group: A solutions-focused community group of Southbank residents working to bring positive change in sustainability practices and education to our neighborhood, while building a wonderful community of like-minded people. Reach us at southbanksustainability@gmail.com or [facebook.com/SouthbankSustainabilityGroup](https://www.facebook.com/SouthbankSustainabilityGroup).



Artemis Pattichi

Southbank Sustainability Group
southbanksustainability@gmail.com

Business

Family-friendly apartments

By Alex Dalziel

The popularity of "super-apartments" in the Melbourne Square (MSQ) project has increased, with developer OSK Property saying it had seen an influx of families interested in its new development.

More than \$32 million worth of apartment combinations have been made at the Kavanagh St development since sales launched in November 2017.

According to OSK Property, 19 apartments at MSQ have been combined into nine, with more than \$78 million of the project's \$586 million total sales having been sold to buyers who have bought more than one apartment in the project.

Many have purchased these apartments to combine into "super-apartments" or to co-locate a family in the building.

One buyer bought six apartments on two floors of the development, with an aim to create three large three-bedroom family residences; one for him and his wife, another for his daughter and the third for his son's family.



CBRE's managing director of residential projects Victoria, Andrew Leoncelli said that families had opted for combination apartments in order to create a large family home.

"People are applying the hotel concept of adjoining rooms to the residential apartment market and creating semi-detached sky homes that equally provide privacy and connection to the larger family unit," he said.

"With parents working longer hours and the high cost of living, creating combination apartments for family makes sense as it shares the cost of the purchase and long-term, the cost of childcare is negated."

Stage one of the MSQ project is currently under construction on the corner of Power St and Kavanagh St. Once completed MSQ will feature six towers - four residential, one commercial and one hotel (managed by Hilton).



The development will also have a furnished \$12 million penthouse featuring a personal gallery curated in a collaboration between Carr Design and Hub Furniture.

The "live - in gallery" will feature works from Canadian artist David Umamoto and Britain's Faye Toogood, as well as a special piece by the late Brazilian Flavio De Carvalho.

The penthouse will be 670 sqm, with a double high ceiling and a statement marble staircase.

Carr Design's director of architecture Chris McCue said the special collaboration resulted in a beautifully-appointed one-of-a-kind home, nestled amid Melbourne's Arts Precinct.

"The sense of luxury in the MSQ penthouse is not just special, but also emotional. The gallery concept taps into the excitement of discovering new talent, being



ahead of the pack and securing amazing works that will appreciate over time," he said.

"When we design luxury we think beyond a floor plan or materials palette and use the interiors to create mood and emotion. Hub Furniture has amplified this by sourcing rare and unique items that add to the drama and beauty of the living experience."

The first stage of the \$2.8 billion MSQ development is worth \$490 million, which will see the first two residential towers sit above a retail area.

The development also includes 14,700 sqm of public and private residential amenities alongside a 3700 sqm public park that is due to be completed this year. Taylor Cullity Lethlean, who had previously worked on Birrarung Marr, the Natural Arboretum in Canberra and Adelaide Botanic Gardens Wetland, designed the park.

Southbank-based businesses wishing to be profiled in this section should email: advertising@southbanklocalnews.com.au

WHAT'S ON COMMUNITY CALENDAR

JAN | FEB | MAR | APR | MAY | JUN | **JUL** | AUG | SEP | OCT | NOV | DEC |



INNER MELBOURNE LIFE ACTIVITIES CLUB

Meeting on selected dates and various locations, IMLAC takes in the city's parks, its culture, fabulous eating options as well as festivals, galleries and concerts.

www.life.org.au/implac or call Dianne 0425 140 981



JULY 27 & 28 - VARIOUS VENUES

OPEN HOUSE MELBOURNE

Boyd Community Hub, Buxton Contemporary, Australia 108, Ian Potter Southbank Centre and NGV are among a vast range of local venues open to explore. openhousemelbourne.org

TUESDAYS - THURSDAYS & SATURDAYS

CHUNKY MOVE DANCE CLASS

Mondays to Thursdays and Saturdays at 111 Sturt St. Chunky Move dance classes are the perfect way to unwind, get fit and improve flexibility and strength.

chunkymove.com



TUESDAYS

LAUGHTER YOGA @ BOYD

Laughter Yoga is a unique concept that allows you to laugh even when you least feel like it and is ideal for all ages. Sessions are at Boyd Community Hub, Assembly Hall each Tuesday at 6pm.



FIRST AND THIRD SATURDAY EACH MONTH

SUSTAINABILITY GROUP

A growing group of green and sustainability enthusiasts who live in Southbank looking to bring positive change. More info: [facebook.com/SouthbankSustainabilityGroup](https://www.facebook.com/SouthbankSustainabilityGroup)



FIRST AND THIRD THURSDAY @ BOYD

TEAHOUSE TOASTMASTERS

Want to take your public speaking to a higher level or improve your English and make some local connections? Join us on the first and third Thursday every month.

Enquiries: jvanselow@gmail.com

SATURDAYS 8AM @ BOYD

YOGA WITH MELIA

Warm up your weekend with a class of Yoga with Melia! Improve your strength, flexibility and mental clarity.

All levels welcome, bookings essential.

info@yogawithmelias.com.au



MONDAYS 1.30PM TO 3PM @ BOYD

MATERNAL & CHILD HEALTH

A free drop-in service available for families that need additional support between appointments. The sessions run in the Maternal and Child Health area at Boyd. No appointments necessary.



FRIDAYS 7.45AM - 9AM @ BOYD

COMMUNITY TAI CHI

WULONG TAI CHI offers you the opportunity to enhance your strength, balance, flexibility and well-being in a friendly, supportive environment. All welcome. lily@wulongtaichi.com.au



SUNDAYS

ARTS CENTRE MARKET

Meet over 80 of Victoria's finest artisans first hand. Discover how these unique artworks are made, chat directly about the products, inspirations and techniques.

artscentremelbourne.com.au

WEDNESDAYS @ BOYD

FREE WALKING GROUP

Join local fitness experts JustInTime as they lead a "not just walking group" for Boyd walkers. The program runs on Wednesdays from 9.30am to 10.30am.



77 - 83 CITY ROAD, SOUTHBANK

ONE ROOF

A community, a home and an entire ecosystem providing everything a female entrepreneur needs to thrive under one roof. Find out what's on: melbourne.oneroofwomen.com/new-events



ALL WINTER @ FEDERATION SQUARE

WINTER VILLAGE

The Winter Village is equipped with an ice skating rink, a cozy igloo village, a larger-than-life mega igloo where it snows on the hour, a Graze kitchen and a Sip bar.

thewintervillage.com.au

TUESDAYS

SOUTHBANK ROTARY

Rotary Club of Southbank meets weekly for dinner on most Tuesday evenings throughout the year at Belgian Beer Cafe at Riverside Quay. Visitors welcome.

southbank.org.au

MONDAYS @ BOYD

JUSTICE OF THE PEACE

Local Southbank JP Atilla Akguner offers two hour sessions every Monday morning from 11am until 1pm at the Principal's Office at Boyd. To book in a time contact:

atillaakguner@gmail.com

FIRST THURSDAY OF EACH MONTH

SUNRISE PROBUS CLUB

Over 50, living in Southbank and want to join our vibrant club for activities, events and friendship? Meet at Library at the Dock at 10am. Contact Verna on 0407 065 910. MSPC.docklands@gmail.com

BUSINESS DIRECTORY

ATTRACTIONS

Open Daily from 10am
eurekaskydeck.com.au

eureka skydeck

BROTHEL

Studio 466

美女如雲

466 City Road
South Melbourne

03 9696 4666
OPEN 7 DAYS

CHURCH

St Johns
Southgate

20 City Road Southbank
Telephone 9682 4995
www.stjohnssouthgate.com.au

ESCORTS

Erica Elderby 96503295

Mature
Sophisticated
Affectionate
Discreet
Genuine
Affordable Escorts
paramour.com.au

5 mins to your door!

www.paramour.com.au

(03)9654 6011

Melbourne's Finest Escorts can be at your door in 5min as we're located in the CBD

ENTERTAINMENT

MELBOURNE
RECITAL
CENTRE

TO BOOK: 9699 3333
melbournerecital.com.au

CNR SOUTHBANK BLVD &
STURT ST, SOUTHBANK

#melbrecital

FUNCTIONS

St Johns
Southgate

Facilities hire Beautiful venue for weddings and memorial services
Concert venue with excellent acoustic and comfortable seating
Spacious function room Meeting rooms Kitchen

20 City Road Southbank
Telephone 9682 4995
www.stjohnssouthgate.com.au

GYM

JUSTINTIME
PERSONAL TRAINING

University degree qualified trainers that come to your apartment gym!

Justin Moran
0411 798 934 justintimept.com

HAIR & BEAUTY

RoopRani
herbal beauty salon
HAIR & BEAUTY SPECIALISTS

P5 SOUTHGATE COMPLEX - PH 9686 6504
WWW.ROOPRANI.COM.AU

HEALTH



OSTEO STRONG

OsteoStrong South Melbourne
378 Clarendon St, South Melbourne
P: 7004 1284
E: sthmelb@osteoststrong.com.au

MARKET



Explore the Market

SOUTH MELBOURNE MARKET
Corner of Coventry & Cecil Streets, South Melbourne

LIQUOR STORE

ACT OF WINE

Honest wine, craft beer, artisan spirits
22 Fanning Street SOUTHBANK
Open 7 Days
www.actofwine.com.au

PHOTOGRAPHY

PHOTOGRAPHY STUDIES COLLEGE

MASTERS | DEGREES | DIPLOMAS
CERTIFICATES | SHORT COURSES

Find Out More

PSC.EDU.AU + 61 3 9682 3191
info@psc.edu.au | 65 City Road, Southbank VIC 3006

REAL ESTATE

CENTRAL EQUITY

AWARD-WINNING MELBOURNE DEVELOPER

1800 63 8888

southbankplace.com.au

CityResidential
REAL ESTATE PTY LTD

T: 03 9001 1333

818 Bourke Street,
Docklands
VIC 3008

SALES Glenn Donnelly m: 0419 998 235

LEASING Lina D'Ambrosio m: 0430 929 851

www.cityresidentialbourkestreet.com.au

SELLING | LEASING | PROPERTY MANAGEMENT

FIFTEEN85

SOUTH MELBOURNE

www.fifteen85.com.au

LUCAS

WE KNOW VERTICAL LIVING
BETTER THAN ANYONE.
THAT'S YOUR ADVANTAGE.

9091 1400 | lucasre.com.au

MELBOURNE SQUARE



THE LARGEST
TERRACES
IN MELBOURNE

TO BOOK AN APPOINTMENT CALL 1300 888 770 OR
DISCOVER A TERRACE STORY AT MELBSQUARE.COM.AU

RayWhite

Ray White Southbank | Port Phillip
111 Clarendon Street, Southbank 3006
P: (03) 8102 0200
www.raywhitesouthbank.com.au

SOUTHBANK RESIDENTIAL

Specialists in Southbank Apartments

www.southbankresidential.com.au

Phone: 964 50 800

THE EVERMORE

MELBOURNE

Retreat
Everyday
call 1300 383 766
www.theevermore.com.au

TAXI

Crown Cabs Taxi Service

Bookings: 1300 12 13 14
Download the App for your next Ride!

Whittles

Owners Corporation Management Services



For superior owners corporation management services,
contact the Docklands dedicated team
Whittles, Level 1, 838 Collins Street, Docklands VIC 3008
T 03 8632 3300 E info.docklands@whittles.com.au

RENOVATION

AROM APARTMENT
RENOVATIONS OF
MELBOURNE

1300 96 86 07
edgar@arom.com.au
www.arom.com.au

RESTAURANT

DOWNSTAIRS
— BISTRO & LOUNGE —
215—217 Sturt Street Southbank Victoria
9686 5015
WWW.DOWNSTAIRS.NET.AU

ENA
Shop M4/9 Mid Level Southgate Complex 28
Southgate Ave, Southbank
Ph: 9690 6205
Menu: enagreekstreetfood.com.au

THE LANGHAM
MELBOURNE
The Langham, Melbourne 1 Southgate Avenue, Southbank, VIC 3006 Australia
T 1800 641 107 melbarestaurant.com.au

SCHOOLS

www.haileybury.vic.edu.au

HAILEYBURY
KEYBOROUGH BRIGHTON BERWICK CITY BEJING

SERVICES

Stop Noise
ADD ON DOUBLE GLAZING
NOISE REDUCTION SPECIALISTS
1800 880 844
INFO@STOPNOISE.COM.AU
WWW.STOPNOISE.COM.AU

In Room Auction

RayWhite

6 Auctions in 1 night

Wed 31st July at 6:30pm

Join us at 111 Clarendon Street, Southbank (our office)

For further information please visit our website at raywhitesouthbank.com.au

Ray White Southbank | Port Phillip

111 Clarendon Street

Southbank, VIC 3006

8102 0200

southbank.vic@raywhite.com



raywhitesouthbank.com.au

2018-2019 Alan White Elite Award

RayWhite



Ray White Southbank & Port Phillip has just been awarded for Property Management Excellence and Business Leadership.

Our dedication to the success of our clients has helped achieve remarkable results that puts us amongst the highest performing real estate agencies in our entire group.

raywhitesouthbank.com.au

Ray White Southbank | Port Phillip

8102 0200

southbank.vic@raywhite.com

