

The voice of Southbank, South Wharf & Montague

# SOUTHBANK Local NEWS

■ **Foley slams "lazy" Greens**

Page 2

■ **Rob Adams talks open space**

Page 5



■ **Council finances remain strong**

Page 7

■ **Fishermans Bend's 4D future**

Page 14



## Happy Birthday La Camera!

*A local institution, La Camera Southgate, celebrates 20 years in Southbank this month.*

A 20<sup>th</sup> birthday for any business is no mean feat and since 1999, the authentic Italian restaurant has cemented its reputation on delicious food, excellent service and building a stronger community here in Southbank.

Family, friends and regulars gathered on October 7 for a VIP night to mark the occasion, with an evening of typical La Camera hospitality, live music and activities.

*OctoberFESTA!* is their month-long birthday celebration with discounts, special offers and events. For more: [lacamerasouthgate.com](http://lacamerasouthgate.com)



Family, friends and regulars celebrate La Camera's 20th birthday celebrations on October 7.

# Federation Square has a new CEO

By Meg Hill

*In an exclusive first interview with Southbank Local News, Federation Square's new CEO Dr Xavier Csar said that failed efforts to build an Apple Store at the square had "catalysed" an important discussion around the future of the public space.*

Management offices in Federation Square aren't signposted. Tucked away on the eastern side of the square, the CEO's office looks out above some of the open space between ACMI and the big screen.

It would have hosted a perfect view of anti-Apple protesters when they held a number of demonstrations in the square last year.

A more than year-long battle against plans for an Apple Store in the square centred its criticism on the Andrews Government, Apple, and then-Fed Square CEO Jonathan

Tribe. Now, with Apple gone, heritage approved and a government review underway, Federation Square has quietly found a new CEO.

The replacement, Dr Xavier Csar, had recently spoken with one of the square's two architects when he was interviewed by *Southbank Local News*. He said that architect had emphasised the "nooks and crannies" of the square's built form - the hidden spaces that are meant to be discovered slowly.

But on the other side of the glass, protestors

had highlighted the open public space where people gather, the classic use of a town square. The new CEO wouldn't speculate on whether or not his predecessor had got the balance wrong.

"I don't really want to focus on Jonathan's management style because Jonathan retired and I'm here to replace him," Dr Csar said. "But what I would say is that my first priority is recognising that this is a place that's defined by the partnerships and relationships between people who

use the square. It's defined by those relationships and it's important they're good relationships."

Dr Csar headed the TAFE division of the Education Department for four years. He said he was asked to take over at Federation Square because of his experience connecting public sector organisations with community and achieving financial sustainability simultaneously with public good.

*Continued on page 3.*



Melcorp Real Estate

Your Southbank Property Experts

Contact us today for a free, no obligation rental or sales appraisal.

[melcorp.com.au](http://melcorp.com.au) | [info@melcorp.com.au](mailto:info@melcorp.com.au) | 9696 8869

# Foley hits back at "lazy" Greens

By Sean Car

**Labor Member for Albert Park Martin Foley has hit back at City of Melbourne Greens Cr Rohan Leppert in response to his criticism of the state government's transport plans for Fishermans Bend.**



Member for Albert Park Martin Foley.

As reported in the September edition of *Southbank Local News*, Cr Leppert took to Twitter in August questioning whether the state government was serious about Fishermans Bend amid its decision to prioritise Suburban Rail Loop ahead of Metro 2.

Metro 2, a \$20 billion underground rail route connecting Mernda to Werribee via Parkville and Fishermans Bend, has been recommended as a "high priority" project by the likes of the Rail Futures Institute and the RACV. Both the City of Melbourne and the City of Port Phillip have also publicly stressed the importance of the project.

The Fishermans Bend Business Forum (FBBF) also reiterated its concern and "disappointment" at the lack of funding commitment by the state government in delivering a train service to the precinct.

Premier Dan Andrews and his Labor Government reaffirmed its commitment to the \$50 billion suburban rail loop ahead of Metro 2 this month, with Cr Leppert having previously joined a range of peak bodies in questioning the move.

"Fishermans Bend planned for 80,000 residents and 80,000 jobs but zero public transport is funded," Cr Leppert said. "The government cannot leave precincts half-planned and expect them to succeed."

Member for Albert Park Martin Foley responded by accusing the Greens of playing "cheap politics."

He said that Cr Leppert and the Greens had "chosen to ignore" the "developer free-for-all" under former Liberal Minister for Planning Matthew Guy that Labor had put an end to, as well as revised planning and new infrastructure it had delivered.

This, he said, included the likes of the

purchasing of the GMH Holden site and subsequent partnership with the University of Melbourne, a Fishermans Bend Secondary School and the "pre-work in delivering the necessary tram network across the river."

"The Greens have demonstrated their lazy approach to the facts," Mr Foley said. "Either they don't put in the effort to know what their own council staff and state planning agencies are doing - or worse they deliberately choose not to know."

"As the City of Melbourne has been an active partner in nearly all these measures it is surprising that the Greens have decided to play cheap politics. They should know this government delivered the biggest investment in our nation's history on public transport - including the city-shaping Metro project well under way."

"They should know a record investment in trams and trains is moving more Victorians especially in the booming City of Melbourne."

"For Greens councillors to choose to ignore all these and other measures that have improved the City of Melbourne in general and Fishermans Bend in particular is disingenuous."

"This is a government that will bring public transport to the heart of Fishermans Bend. This is a government that looks to partner with Melbourne City Council in all these efforts. The Greens should either get on board or get out of the way."

## HYPERLOCAL NEWS

Suite 108, 198 Harbour Esplanade  
PO Box 23008 Docklands 8012  
Tel: 8689 7980 Fax: 9602 2929  
www.southbanklocalnews.com.au

Editor: Sean Car

Publisher: Hyperlocal News Pty Ltd  
ABN: 57623558725

Tel: 8689 7980 Fax: 9602 2929  
advertising@southbanklocalnews.com.au

Reader contributions are welcome.  
Please send articles and images to  
news@southbanklocalnews.com.au

Deadline for edition 91 is October 31.

## CONNECT

Keep up to date with local news & events.



Follow us on Twitter  
@SOUTHBANK\_News



Follow us on Facebook  
Southbank Local News



Follow us on Instagram  
@southbanklocalnews

# THE EVERMORE

MELBOURNE



SPACIOUS 2 & 3  
BEDROOM APARTMENTS  
WITH UNINTERRUPTED  
CITY AND BAY VIEWS.

CONSTRUCTION  
NEAR COMPLETION

VISIT DISPLAY



TheEvermore.com.au ☎ 1300 383 766  
Ground floor, 95 Coventry St, Southbank

# Federation Square has a new CEO

Continued from page 1

"I'm looking to unleash that public value and understand what those around us need and want and to deliver that," Dr Csar said.

"We're a precinct but we are defined not just by the partners we have in the precinct - the cultural institutions, the commercial tenancies, the people who come and go - but we're also defined by the value we bring to our neighbours."

He was hesitant to imply that the square was at a crossroads, but there were subtle shifts in language.

For example, when Apple pulled its controversial plans to build a flagship store in the square, then-CEO Jonathan Tribe gave public support for the first time to the idea of gaining some degree of public funding for the square.

Those who led the *Our City, Our Square* campaign, which opposed the Apple plans, had always insisted that square should be publicly funded but they expressed concern at the framing.

They said Jonathan Tribe's comments may have played up financial difficulties to justify further commercialisation. It's a framing Dr Csar avoided.

"To the question of whether or not the square should get public funds, the answer is yes," Dr Csar said.

"If the review wants to deal with that then that's terrific, we're here to be able to deliver that, but it's not as if we're not able with our current income to make this place available as you currently find it, because we are."

Dr Csar added that big projects and developments in the square would likely require more funding, which could be individual budget decisions for government and not necessarily a change to the square's funding regulations.

But he also gave a somewhat generous new spin to the current financial model of the square.

"It's not that we're not publicly funded at



all. We get funds from the activities and organisations within the square, and some of those are publicly funded."

Dr Csar also described the result of Federation Square's "blend" - the businesses and commercial ventures as well as cultural (and government funded) institutions like the Koorie Heritage Trust - as a social enterprise.

The careful shifts of language seemed to acknowledge the tension between the idea of public space and the reality of Federation Square governance.

It is also a testament to the *Our City Our Square* campaign, which clearly identified the discrepancy between public expectations and reality for the space.

Melburnians, they said, thought of the square as a public asset and were appalled not only by the transparent commercialisation they saw in the Apple proposal and process, but that the square's existence relied on profit in the first place.

"The Apple development just catalysed a discussion about the square - how public, how accessible, what's the long-term vision and is this the time to have that discussion because there hadn't been that discussion

for a very long time," Dr Csar said.

In reality, Federation Square's charter, as it stands, ensures that it runs like a business, not a publicly owned asset. It has to stand financially on its own feet.

That seemed to be one of square's real hidden secrets waiting to be discovered.

Dr Csar didn't say which one he had spoken to, but it's no secret that the Federation Square's two architects diverge when it comes to the square's future. One of the architects enthusiastically supported the Apple proposal, the other denounced it. One cherishes the commercial element of the square, the other doesn't.

That division supports the idea that opinions on the issue are not fundamentally about Federation Square but are based on political divides over the question of public space.

The government is due to release its community consultation report late this year and has given few clues as to where it might lead. It's a comprehensive review that was given the scope to change the nature of the square, but it could easily satisfy itself tinkering around the sides.

The view from Dr Csar's window will likely be protest-free at least until we find out.

# Boulevard moves along

By Spencer Fowler Steen

**Works on Southbank Boulevard will shift to the section of road between Kavanagh St and City Rd from the start of October until December.**

Commuters can expect closure of the entrance into Southbank Boulevard from the City Rd intersection with traffic diversions to be placed around the works zone.

There will be medium to high noise levels as utility, signal and construction work goes on, while weekend and night work is to be expected.

A City of Melbourne spokesperson said that the scheduled work included realignment of the roadway, traffic signals, public lighting and other utility installation, kerb and channel construction and road re-asphalting.

Significant progress has been made on the Southbank Boulevard project in recent months with the roadway between St Kilda Rd and Kavanagh St having reopened ahead of the AFL Grand Final long weekend.

Other works underway on Southbank Boulevard include the arts gateway between the Melbourne Recital Centre and the Melbourne Theatre Company in progress until December this year.

Southbank residents can also expect works on the City Rd intersection to commence in October, as well as the creation of an ABC open space in early 2020.

Works on neighbourhood parks bordering Southbank Boulevard will also begin in late 2020.

## ESCAPE TO BETTER

STRESS LESS & LIVE MORE WITH LUCAS PROPERTY MANAGEMENT

PASSENGERS

**Landlords / Investors**

**WIN A LUXURY RETURN TRIP FOR 2**

**FROM: Melbourne (AUS)**

**TO: Honolulu, HAWAII (USA)**

**5 NIGHTS / 5 STARS \* \* \* \* \***



FLIGHT:  
**JQ 1**

SEAT:  
**18 K**

GATE:  
**27**

BOARDING TIME:  
**09:30 AM**



ETKT 1736483297456291

TRANSFER / SIGN-UP

**YOUR INVESTMENT**

**FROM: Current Agent**

**TO: Lucas Real Estate**

FOR STRESS-FREE MANAGEMENT & GO IN THE DRAW TO WIN A TRIP FOR 2

FLIGHT:  
**JQ 1**

SEAT:  
**18 K**

GATE:  
**27**

BOARDING TIME:  
**09:30 AM**

ETKT 1736483297456291

For stress-free property management & a chance to win, visit [lucasre.com.au/escapetobetter](http://lucasre.com.au/escapetobetter)

\* List an eligible property for rent through Lucas Real Estate during the competition period - Terms & conditions apply.



## A smoke-free promenade?

**Southbank Promenade has been flagged as one of the next City of Melbourne sites to go smoke-free.**

Council officially declared Bourke Street Mall in the CBD between Elizabeth St and Russell Place as a smoke-free zone this month and now has other locations, including Southbank Promenade, in its sights.

People City portfolio chair Cr Beverley Pinder said there was widespread community support for the bans and flagged that Southbank Promenade could be next.

Local residents took to the Southbank Residents' Association's (SRA's) Facebook page this month in widespread support of the idea.

"Yes, definitely support a smoke-free Southbank," one commented.

"Absolutely!" said another. "We might even be able to see the grass instead of the blanket of butts that literally covers the "green" spaces."

The council bans do not currently include e-cigarettes, also called vaping. However, council will review the local law to consider also banning vaping in smoke-free areas.

Quit Victoria Director Dr Sarah White said the City of Melbourne's initiative was in line with community expectations and would likely be followed by other councils in Victoria.

# New car parking for Balston St

**The City of Melbourne is understood to be pushing for more angled parking on Balston St as it continues with plans to remove 50 car parks from Kavanagh St.**

As reported in the September edition of *Southbank Local News*, the council began consulting locals last month on the installation of new separated cycling lanes along Kavanagh St, which would see angled parking removed on both sides of the street.

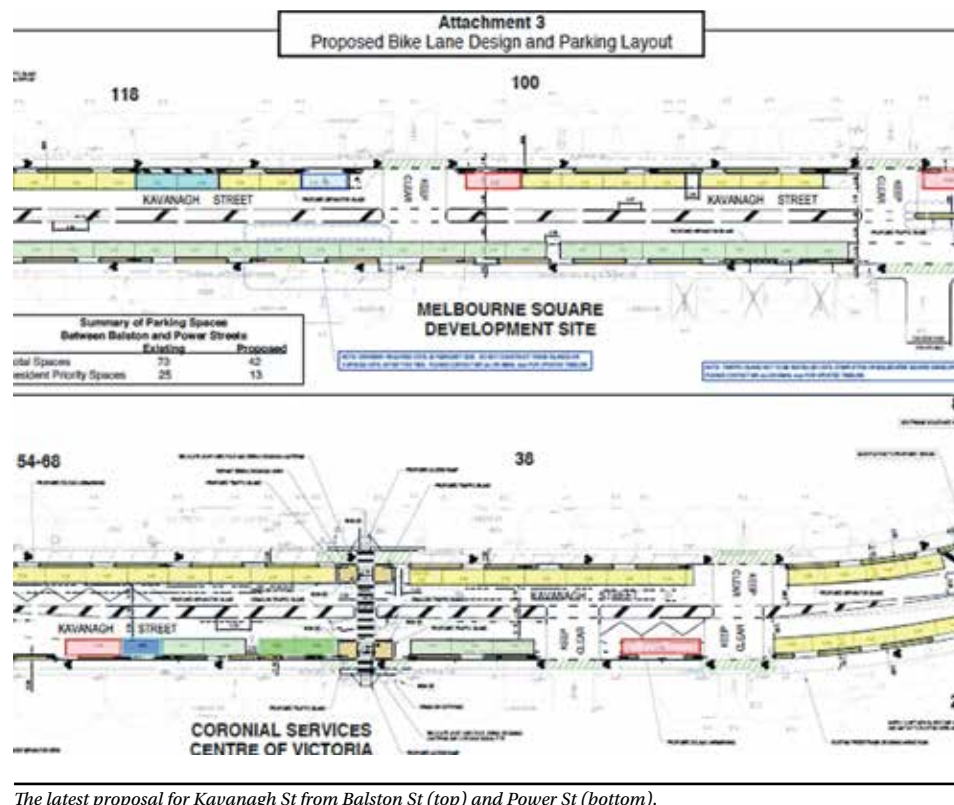
While the new lanes have the wide support

of the community having been flagged for many years as part of the City Road Master Plan and Southbank Boulevard upgrades, many residents had argued that the loss of 50 car parks was too great.

*Southbank Local News* understands that 24 new angled car parks are being considered by council as a compromised solution for the loss on Kavanagh St.

Latest revised plans also propose a new median strip along the middle of Kavanagh St, which will allow for new tree plantings, as well as a new zebra crossing at the intersection with Southbank Boulevard.

Consultation with the Southbank Residents' Association (SRA) and local owners' corporations on Kavanagh St continues.



The latest proposal for Kavanagh St from Balston St (top) and Power St (bottom).



A render of the approved 51-65 Clarke St.

## Movement on Clarke St

**As one developer embarks on a search for a hotel operator for its new Clarke St mixed-use tower, another is putting theirs up for sale.**

Developer Newcity Development Group has begun the search for an operator to manage the hotel component of its 69-storey mixed-use tower at 51-65 Clarke St.

Approved in 2016, *Southbank Local News* reported in June 2018 that the developer had put the project up for sale. It is now proceeding with an expressions of interest campaign for an operator to manage the 199-room hotel, according to a report in *The Hotel Conversation*. The project also comprises residential apartments, co-working spaces and ground floor retail.

Across the road, the troubled site at 54-56 Clarke St has once again been put on the market by developer BPM, which comes with a permit for a 25-storey tower.

The site, which was formerly home to the controversially approved 74-storey Elysium, was purchased by BPM in 2018, which later won planning approval for its project, which includes 112 apartments.

A spokesperson for BPM told *Southbank Local News* that its reasons for selling couldn't be disclosed.

### PLANNING FOR END OF YEAR PARTY/FUNCTION, WE HAVE GOT EVERYTHING SORTED FOR YOU

ENA - Southbank (YASSAS THE GREEK WAY) is part of Melbourne's thriving dining culture. Situated on the banks of Yarra River, ENA is bringing modern twist to food inspired by the streets of Greece.

With the warmer weather coming up, and nice breeze of Spring seasons, head now to enjoy the nice and fresh ingredients of Greece.

**WE INVITE YOU TO SHARE THE FEASTING WITH FRIENDS AND FAMILY THE GREEK WAY. YIAMAS!**

**YASSAS THE GREEK WAY NOW OPEN IN THE DISTRICT DOCKLANDS!!!**

Shop M4/9 Mid Level Southgate Complex  
28 Southgate Ave, Southbank  
0481 997 779 • www.yassas.com.au

**Receive a Free Bottle of wine\***  
on minimum spend of \$100

\*Bring this ad to receive the free bottle of wine

**FOOD AND DRINK PACKAGES AVAILABLE**

# A green transformation of our city

Advertorial by Sean Car

**Director of City Design and Projects at the City of Melbourne, Professor Rob Adams, knows that changing the city doesn't happen overnight.**

The lead architect and urban planner has been helping drive the vision for sustainable development in the city since the 1980s.

With inner-Melbourne's population forecast to double by 2040, the need to provide more open space for a growing city and mitigate the impacts of climate change have never been more important.

While Prof Adams said the city's transformation from a relatively empty CBD in the 1980s was "remarkable," there was still a long way to go to address our most significant challenges.

"We've got two real problems in Melbourne. The really big hairy ones are rapid population growth and climate change," he said.

"I don't want to demean any of the other things we're doing but if we don't deal with those two, the other things are going to become more and more acute anyway. That's



Prof Rob Adams at Southbank Boulevard.

where we're heading."

When developing its Open Space Strategy nearly 10 years ago, the City of Melbourne identified that in order to manage population growth, the equivalent of \$700 million in open space would need to be purchased.

Naturally, without that sort of money lying around, a different approach was required to find more space, which is where the resolve to reuse and repurpose underutilised assets, such as roads, which started on a small scale in the 1980s, was now ramped up.

While the council has a number of greening

initiatives and strategies it is rolling out across the city, Prof Adams caught up with *Southbank Local News* last month at Southbank Boulevard, where the road is currently being transformed on a large scale.

"People would be surprised to hear us say 'underutilised' but Southbank Boulevard is an example," Prof Adams said. "When the bottom of Southbank Boulevard was closed during the Commonwealth Games to create Queensbridge Square, traffic dropped off from 30,000 to 13,000 cars a day. So, there is an opportunity to recalibrate that space."

And that's exactly what council is doing. By closing half the road between City and St Kilda roads, a new 2.5-hectare linear park, complete with new bike lanes, wider footpaths and outdoor spaces for the community to enjoy, is being created.

A historic example of this strategy in action includes the reclamation of land from former railyards and roadway to create eight hectares of new open space at Birrarung Marr next to Federation Square. Other current transformations include the closure of two streets to create a bigger University Square in Carlton, as well as the closure of Market St to create a new park in the CBD as part of the new Collins Arch development.

"Never in my wildest dreams did I think we would be transforming more than half of Southbank Boulevard and taking over two local roads to expand University Square,"

Prof Adams said. "I thought it would be change on a much lesser scale but it has built momentum and people have seen the benefits."

"We're a bit of a pilot for the rest of metropolitan Melbourne and even other global cities. We didn't expect to become a pilot but even cities like New York, through Jan Gehl, sought our advice and have followed our approach for taking roadway to extend public space for people."

In addition to building new parks, such as Boyd Park in Southbank or Ron Barrassi Snr Park in Docklands, greening the CBD's laneways and rooftops, expanding our urban forest and investing in renewable energy, the city is making a good fist of fighting climate change.

But while pointing out that Melbourne still had a long way to go to becoming a carbon neutral city, he said the City of Melbourne, with the support of the community, was doing everything in its power to get there.

"The beauty of having an ambition target is that opportunities will come along and allow you to realise it. We've got a zero-carbon policy to achieve by 2030. Will we actually get there? I'm not sure, just as in 1985 we were not sure we would get 8000 new residents to live downtown; well, we overachieved that target so I have every confidence, with the help of our communities and other agencies, that we can achieve this urgent target."

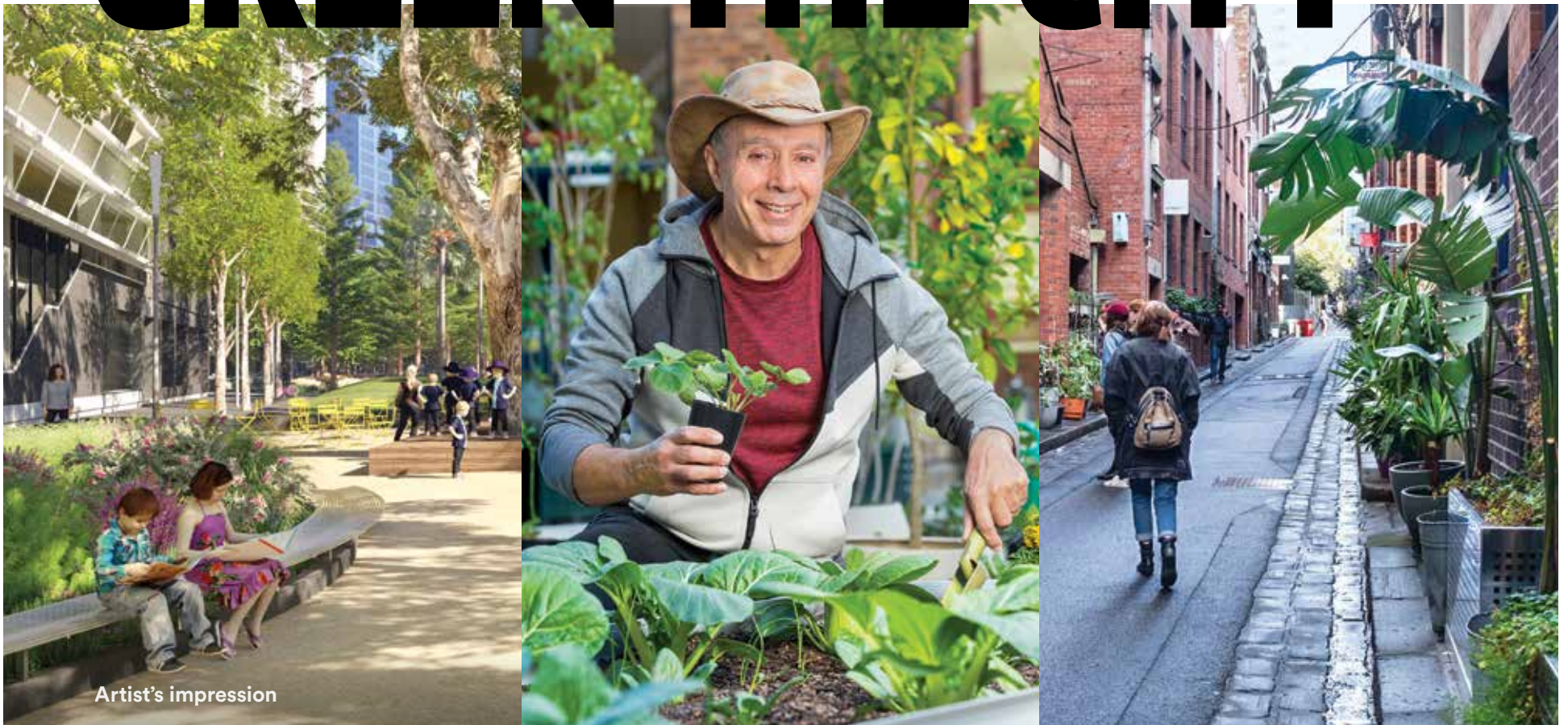
**ACCLAIMED**

- Australian School Principal of the Year 2019
- Australian School of the Year 2018

Small Classes. Parallel Education for Girls and Boys. Award-Winning Teachers.

KEYSBOROUGH BRIGHTON BERWICK MELBOURNE DARWIN BEIJING

# ACT NOW TO GREEN THE CITY



Artist's impression

**We can all play a part to improve our city's climate resilience.**

## What is City of Melbourne doing?

We've been greening streets, laneways, rooftops and facades all over the city, and planning even more open, green spaces to help keep local temperatures down. Our transformation of Southbank Boulevard will add 2.5 hectares of public space and neighbourhood parkland to help cool our city.

## What can you do?

- Read our Green Growing Guide for tips on how to create your own green roof, wall or facade.
- Volunteer as a Citizen Forester.
- Look after your local street trees in hot weather.
- Choose the right plants for your location, such as climate tolerant plants for balconies.
- Nominate trees for the Exceptional Tree Register.
- Donate to the Urban Forest Fund.

[melbourne.vic.gov.au/greencity](https://melbourne.vic.gov.au/greencity)



# Big property write-downs but Town Hall's finances remain strong

By Stephen Mayne



One of the reasons the council's cash position remains strong is that Town Hall continues the long-term trend of under-spending its promised capital budget, which is not a welcome trend.

Only \$140.7 million was expended on capital works in 2018-19, against a budget of \$172.2 million. The underspend has been attributed by council officers to "delays due to issues with service agencies and changes to scope experienced by QVM, Lady Huntingfield Children's Centre in North Melbourne, Southbank Boulevard, Lincoln Square and Enterprize Park".

Asset sales are also helping the council with the Boyd School development site in Southbank recently sold to developer PDG for \$16 million and a further \$9 million expected in 2019-20 from the sale of various laneways.

Under the stable leadership of chairman John Brumby and CEO Chris Campbell, Citywide also appears to be performing well. This is a strategic operating asset with a service footprint across Victoria, NSW and Queensland which could easily be sold for more than \$100 million if the council ever needed to raise some funds.

CoM did choose to exit its investment in the Sustainable Melbourne Fund (SMF) last year and this has proved to be a great success after council recovered its \$10 million loan, along with \$5.6 million worth of units in the SMF Trust.

Deputy Lord Mayor Arron Wood explained that free of council constraints, the financier of energy-efficient building upgrades had flourished with finance now provided by Bank Australia.

"Council divested as it was strategically important for both SMF and the CoM," Cr Wood said. "Divestment has allowed the fund to grow to \$200 million and expand its operations beyond the initial intent of SMF. The Sustainable Australia Fund is a very good news story in terms of CoM efforts to seed a new market."

On the debt front, the CoM has not needed to draw down on a \$75 million loan facility with ANZ and may choose to go debt-free by paying back a \$28.5 million loan from the

federal government's Clean Energy Finance Corporation (CEFC).

This fall is due in late 2020 but a council spokesperson said they would "consider early repayment of the CEFC loan in the first quarter of 2020". With net assets of \$4.45 billion, even after the property write-downs, council's balance sheet remains strong and returning to a formal debt-free position would reinforce that point.

On the spending front, there are still some big lumpy items. For instance, a hefty \$15.1 million was spent on computers and telecommunication in 2018-19, which is only just below the total budget for roads, bridges, footpaths and cycleways.

This was defended on the grounds of investment in "business change" and "mobile solutions" for staff to keep them in the field for longer.

That hasn't been evident on the parking front given that fines revenue tumbled from \$44.3 million to \$38.5 million, partly due to officers now working in pairs to improve safety outcomes in the face of angry motorists contesting tickets. Increased compliance courtesy of the use of apps such as PayStay is another factor in falling parking ticket revenue.

Thankfully for council's finance department, the recent increase in parking fees propelled parking fee revenue from \$46.6 million in 2017-18 to a record \$54.5 million in 2018-19, more than offsetting the \$5.8 million drop in parking fines revenue.

There's even been some good news for ratepayers on the executive pay front. In 2017-18, the three highest paid executives received approximately \$435,000, \$455,000 and \$515,000, but this dropped in 2018-19 when the highest paid executive collected \$415,000.

The 2017-18 payments were impacted by some "termination payments", presumably including to former CEO Ben Rimmer. The new CEO, Justin Hanney, was only on board for about half of the 2018-19 financial year.

*Stephen Mayne is a journalist and former councillor, who chaired the City of Melbourne finance committee from 2012-16.*



## Recycling resumes

**The City of Melbourne and two other local councils restarted household recycling pick-ups on Monday, September 23 after SKM's biggest processing plant reopened.**

KordaMentha took over the site and cleared 10,000 tonnes of stockpiled waste and received a loan from the state government.

The City of Melbourne was one of 33 local councils that had its recycling processes completely disrupted by the collapse of recycling company SKM in July.

Lord Mayor Sally Capp said the council had reached an agreement with KordaMentha.

"The short-term arrangement to process household recycling was reached while KordaMentha seeks to finalise the sale of SKM," she said.

"We urge the community to continue separating their waste and recycling. It's vital that general waste not be mixed in with recycling to ensure recycling services are sustainable and viable."

ALL

# FUNCTIONS

GREAT & SMALL

Celebrate at the Fleece





**GOLDEN FLEECE**  
HOTEL  
ESTD. 1872

**CORPORATE & PRIVATE**

ROOFTOP DECK • PRIVATE BAR • BEER GARDEN  
MULTIPLE EVENT SPACES for 20-150 PEOPLE

120 MONTAGUE ST  
SOUTH MELBOURNE

**BOOK NOW! 9696 9662**

Brand new 1, 2 & 3 bedroom apartments.

# Move in early January



Artist's Impression

## Begin 2020 in your new home at Melbourne Square.

Southbank's newest vibrant heart, perfectly poised above an expansive 3700 sqm park. With a wide range of residential, retail, fine dining, resort-style amenity, childcare, Hilton Hotel and full-line integrated Woolworths supermarket, Melbourne Square will be a dynamic new lifestyle destination in Southbank.

Designed by COX Architecture with interiors by Carr, Melbourne Square will redefine inner city living.

Book your display inspection today.

### Residences Now Selling

2 bedroom \$698,100\*

3 bedroom \$1,010,000\*

\*Prices can vary depending on size of residences.

Display gallery open daily. 11am-5pm  
Corner of Power & Kavanagh Street  
Southbank, Melbourne

**M** MELBOURNE  
SQUARE®

1300 888 770  
melbournesquare.com.au

CBRE

OSK  
PROPERTY

KWSP  
EPF



# Sturt St tower moves ahead

By Edward McLeish

**Renowned Sydney developer Crown Group is preparing to launch apartment sales for its first Melbourne development in Southbank mid-next year.**

The developer's new arts-themed residential project on the corner of Miles and Sturt streets received planning approval from the City of Melbourne in January.

Following in Crown Group's ground-breaking tradition, the twin tower arts-inspired apartment towers, designed by world-renowned Koichi Takada Architects, seeks to add to Southbank's Art Precinct.

The new design, which is a joint venture between Sydney's Crown Group and Melbourne's G3 Projects, aims to complement the state government's \$200 million art precinct transformation.

Crown Group and G3's Melbourne development director Bobby Iskandar Lim said the team had chosen the site for its appeal to the growing number of international buyers seeking out Melbourne, as well as local owner-occupiers who were attracted to the vibrant cultural precinct.

"It is unusual in that the area has a leafy, medium-rise aspect, yet is so close to the



A render of the approved tower for 175 Sturt St, Southbank.

city, so it appeals to families as well as young professionals," he said.

"It is a lively city fringe suburb but still with a relaxed suburban feel given the excellent schools and the Kings Domain just a few minutes' walk away."

The development will encompass two towers of 16 and 14 storeys, set across a corner site of 2070 sqm.

The two towers will host 152 studios, one-, two- and three-bedroom apartments and rooftop gardens.

Mr Lim said the great thing about the site was both its proximity to the city and the fact it would never be built out.

"Neighbouring Dodds St has a lovely leafy low-rise aspect to it; it is a pedestrian zone and links through to the Malthouse Theatre, the Australian Centre for Contemporary Art (ACCA) and the Conservatorium of Music," he said.

The design seeks to celebrate Southbank's thriving arts scene and one of its key features is a community arts space in the lower level, which will provide a space to host exhibitions and installations, as well as a cultural meeting point.

Residents will have access to Crown Group's signature resort-style facilities, which include a rooftop lounge and garden, a theatre, children's play area, gym and pool.

There will also be a ground-floor café and parking for 140 cars and 40 bicycles in a four-level podium.

The development is first of a string of new buildings on Sturt St to progress to sales, with architect Hayball selling its approved 19-storey tower at 135 Sturt St last year to a new developer.

Neighbouring architect Rothelowman also put its approved permit for a 19-storey tower at 153 Sturt St on the market last year, while the site in between at 151 Sturt St was also put up for sale last year.

THE ALL NEW  
**SKYDECK PLANK**  
VR EXPERIENCE

**CAN YOU  
MAKE IT TO THE END?**

**NOW AT THE SKYDECK!**

Open Daily from 10am-10pm  
[eurekaskydeck.com.au](http://eurekaskydeck.com.au)

@eureka\_skydeck  
#eurekaskydeck

**eureka  
skydeck**

**TIME FOR A  
SPRING CLEAN**

**Hard waste collection days**  
Need to get rid of an old fridge, mattress or broken furniture? We'll collect it for free.

If you live in a house, flat or unit, visit [melbourne.vic.gov.au/springclean](http://melbourne.vic.gov.au/springclean) to make your booking.

If you live in a high rise apartment building, talk to your building manager to organise a collection.

**Green waste collections**  
Don't bin your garden prunings, branches, lawn clippings and leaves. Bundle them up and we'll collect them for free. This is a regular service available to residents every month, all year round.

Check your collection schedule and make a booking online. Visit [melbourne.vic.gov.au/springclean](http://melbourne.vic.gov.au/springclean)

Visit [melbourne.vic.gov.au/springclean](http://melbourne.vic.gov.au/springclean) or call 9658 9658

CITY OF MELBOURNE



## Market success

*South Melbourne Market has continued to grow and gain popularity, according to its latest annual report.*

The market, which has operated since 1867, had an increase of 8.5 per cent in visitation over 2018-2019 compared to the previous year.

A total number of 5,567,704 visitors shopped, ate, and browsed the market - a popular attraction for greater Melburnians, local residents and tourists alike.

A large majority of City of Port Phillip residents visit the market - 76 per cent according to the report. An even larger majority, at 87 per cent, thought the market was "a benefit to the community."

The report also encapsulated the environmental and social responsibilities the market has embraced in recent years.

The market has diverted 256 tonnes of fresh produce from landfill, donated 22.8 tonnes of fresh produce to those in need, and given a complimentary meal to 547 vulnerable community members.

Over 2400 people also participated in the market's Neff Market Kitchen cooking school.

Free public wi-fi and a number of new stalls were also added over the year, as well as a new HTPPE milk bottle recycling program and the *Say No to Straws* campaign.

## A Freshwater first

By Sean Car

*Freshwater Place continues to lead by example in apartment living, having recently become the first residential building in Victoria to disclose its water rating under the National Australian Built Environment System (NABERS).*

And it's not the only sustainable change that has been made at Freshwater Place this year. Under a new program led by new building management and the owners' corporation (OC) to fine-tune and optimise the building's resources, cuts on electricity (19 per cent), gas (28 per cent) and water (27 per cent) have all resulted in significant savings for residents.

The initiative has been spearheaded by its new building manager Adam Vince, who made the jump to residential earlier this year having previously managed commercial office buildings in the CBD for eight years.

NABERS is an initiative of the federal government aimed at creating market incentives for efficient and sustainable apartment buildings in Australia. Mr Vince likened the rating to the star rating that one would find on their home appliances, but for buildings.

He said that while the standards had been prominent in the commercial office sector for many years, it was long overdue for residential, with Freshwater Place one of only eight residential buildings nationally to have disclosed its water rating.

Having already achieved a four-star rating (out of a possible six) on water thanks to the introduction of a range of new savings measures, Mr Vince said the building was also working actively to complete an energy rating within the next 12 months.

"Currently, there are 1579 buildings that have undertaken a NABERS rating across the commercial sector in comparison to eight ratings for apartments," he said. "If NABERS takes off in the apartment sector like it did in the commercial sector, it will benefit the residents in our Southbank community who live in an apartment by putting money back



Freshwater Place building manager Adam Vince.

in their pocket by firstly identifying the low hanging fruit."

Now 15 years old, the 62-storey building consists of two pools, two spas, two steam rooms, four cooling towers, a car wash and around half an acre of lawn and landscaped gardens.

In addition to a rainwater harvesting system that supplies filtered water from a 160,000-litre water tank to irrigate its gardens and car wash, it is now staging its cooling towers and matching pool room and water temperatures to reduce water losses through evaporation.

It will also soon embark on installing a range of new fixtures and fittings within common areas and bathrooms, as well as sub-metering to provide live savings data, which Adam said would hopefully help them reach a five-star water rating within the next year.

And given the extensive benefits that came with a NABERS assessment for a building and its residents, Adam said that he was keen to encourage other apartment buildings to start having similar conversations.

"I just want to get the conversation started to push it out to other residents in the Southbank community, as well as others in Docklands, so that they can put the pressure onto their building managers and OC managers and say 'hey, look what Freshwater had done ... why can't we do that here?'" he said.

"If all apartment buildings got involved with NABERS and had an initial assessment undertaken, it will be a step in the right direction towards generating good news stories for all including the environment."

## Domain plan amended and adopted

*The City of Port Phillip adopted an amended Domain Precinct masterplan on September 18 after a significant show of community concern.*

Nine speakers made verbal submissions at the September 18 council meeting. The submissions expressed concerns with traffic congestion, a lack of safe cycling infrastructure and the removal of residential car parking.

The Domain Precinct refers to the area bordered by St Kilda Rd, Dorcas St and Kings Way (up to the St Kilda and Toorak roads intersection).

The president of Port Phillip Bicycle User Group Julie Clutterbuck raised concerns that cycle lanes were insufficient in the masterplan.

A resident of 88 Park Street also told the meeting those living in the building had their "lives made a nightmare" by the removal of on-street parking as part of the bike link project.

Other speakers detailed issues of traffic congestion around Kings Way.

The amendment to the motion, which was moved by councillors Bernadene Voss and Ogy Simic and adopted unanimously by Council, sought to:

- Solve traffic issues at the intersection of Park and Wells streets by delivering a "fully signalised intersection".
- Advocate for ongoing community consultation on the Albert Road Reserve and surrounds, and the Park St bike link.
- Optimise opportunities for short-term servicing and visitor car parking and minimise further reductions of car parking.
- Consider the feasibility of a protected bike lane in the section of Park St between Kings Way and Moray St.

## Seniors' Festival special

Tea & Biscuit Flight  
\$15 only



Come fly with us, enjoy a beverage of your choice and a biscuit on Melbourne's biggest Star!

Book online at [melbournestar.com](http://melbournestar.com) with promo code **SENVIP15**

Available from 11am - 9pm daily October 1 - 31, 2019

For Victorian Seniors only



# Blue bikes scrapped ... what next?

By David Schout

**After the state government's decision to scrap the blue bikes scheme, there will soon be no casual cycling options in Southbank.**

Just over a year since share bike company oBike packed its bags, the joint state government and RACV blue bike initiative will be removed on November 30 after it found the bikes were being used on average just once a day.

Roads minister Jaala Pulford said the bikes had "reached the end of their functional life" but their removal would in fact be a positive within the inner city.

"By phasing out the bike share scheme we will create more space on our footpaths for pedestrians and bike parking, which is what regular cyclists and pedestrians tell us is needed in the CBD," she said.

But the government refused to answer questions posed by *Southbank Local News* about the future of share bikes in Melbourne, including whether there were plans for a renewed scheme.

Launched in 2010, the bikes were never truly embraced by Melburnians, for a host of reasons.



Blue bikes will soon be removed from locations such as Sturt St.

Some cited mandatory helmet laws for the low uptake, while the introduction of the free tram zone in 2015 was also said to have contributed to its failure.

The Victorian Greens slammed the decision to remove what it called the "half-cooked" scheme, and said Melbourne was falling behind other cities.

"A successful bike share scheme is an essential element of any world-class city,"

transport spokesperson Sam Hibbins said.

"It's a lazy decision by the government to scrap the Melbourne bike share scheme and it will damage Melbourne's reputation as one of the world's most liveable cities."

"Every other world-class city has a successful bike share scheme, Melbourne should be no different."

Bicycle Network general manager of public affairs Anthea Hargreaves said the scheme

never received the investment needed to succeed.

"A small network of docks and bikes in Melbourne was the number one reason for the failure of the program," she said.

"The key to a successful bike share scheme is accessibility, location and scale."

Ms Hargreaves said successful programs in cities such as London, Paris and Barcelona suggest it could work in Melbourne.

"We know that bike share schemes can work, we just have to get it right. As well as the right number of bikes and docks we also need high quality, connected bike lanes and infrastructure."

The RACV, which operated the scheme on behalf of the government, was disappointed the blue bikes were to be discontinued.

General manager of mobility Elizabeth Kim said they hoped something would fill the void.

"We definitely see a future for bike riding here in the city," she said. "There's certainly scope in the future for different combinations of bikes and other ways of getting around."

The RACV has said once the scheme is discontinued on November 30, it will donate bikes and bike parts to local charities "where possible".

## Whittles

Owners Corporation Management Services



Established in 1968 Whittles is the largest Australian owned strata management company and widely recognised for its experienced staff and the provision of professional strata management services nationally. With specialist expertise in prestigious high-rise buildings, marinas, commercial and residential, Whittles is proud to be part of Southbank in Melbourne.

[whittles.com.au](http://whittles.com.au)

For superior owners corporation management services, contact the Docklands dedicated team  
Whittles, Level 1, 838 Collins Street, Docklands VIC 3008  
T 03 8632 3300 E [info.docklands@whittles.com.au](mailto:info.docklands@whittles.com.au)

# Thank You

— FOR 20 WONDERFUL YEARS SOUTHBANK! —

We can't thank you, our loyal Southbank locals, enough for your support over 20 years. Words can't do our feeling of gratitude justice, but perhaps Tim Bracher from the Yarra River Business Association (YRBA) explains it best ...

"We don't usually send birthday greetings, but in the case of a Southbank pioneering restaurant we are very pleased to say ...  
"Happy Birthday La Camera!"

The restaurant industry has always been a tough gig, and it's getting tougher every week. In a time of pop-up restaurants and fleeting food fads, La Camera's 20 years of serving up authentic Italian food in a very convivial setting is something of a milestone.

La Camera arrived at Southgate in 1999, having started in Chapel St in the late '70s. They've built up a very big customer base because of good food, happy service and a range of innovative events \*and marketing programs. They also stand out among Southbank eateries in the way they have been able to forge strong ties with local residents.

OctoberFESTA! is their month-long birthday celebration with discounts, special offers + a gala event.

For more information check out [lacamerasouthgate.com](http://lacamerasouthgate.com)

Well done La Camera team."

— LA CAMERA —  
S O U T H G A T E

[www.lacamerasouthgate.com](http://www.lacamerasouthgate.com)  
p. 9699 3600  
e. [eat@lacamerasouthgate.com](mailto:eat@lacamerasouthgate.com)





GoBoat Melbourne co-owner Oliver Swan.

# GoBoat arrives

**A new boating operator has landed on the lower Yarra River at the Banana Alley berth, offering customers a unique way of travelling on our river.**

Having won a 10-year overnight berthing license from Parks Victoria in July, GoBoat Melbourne has since relocated its business from Docklands to Banana Alley just in time for the warmer months.

Originating from Copenhagen, Denmark, the electric European-style boats provide groups of up to eight people with the opportunity to hire a boat for up to three hours and navigate their own experience on the Yarra.

Because the boats are set to speeds of under four knots, a designated driver can operate a GoBoat without a boating licence. BYO food and drink is also encouraged, however, there are strict limits on alcohol.

With all boats made from recycled plastic bottles and running on very quiet electric motors, they're also good for the environment.

Having established its first Australian location on Lake Burley Griffin in Canberra in 2017, GoBoat Melbourne co-owners Oliver Swan and Andrew Ferguson said they had seen a great opportunity to bring the experience to Melbourne.

"I had always been in the entertainment and experience kind of game so I made contact with Nick from Canberra, who

is the owner of GoBoat Australia, and we got chatting about the possibility of Melbourne," Oliver said.

"In August 2018, we made enquiries with Melbourne City Council and spoke to a lot of the people in the industry down here and found out about the Parks Victoria tender process, but when we spoke to the council we were originally offered the spots down in Docklands."

"We submitted our tender [to Parks Victoria] on February 1 and then we were notified that we'd be offered Banana Alley and two berths up the river, which is a fantastic opportunity for GoBoat."

With a fleet of 10 boats, the addition of GoBoat Melbourne to the lower Yarra represents an exciting prospect for the local business community and provides a new and different experience to what is currently on offer on the river.

He added that its new position at Banana Alley was advantageous for its customers as it was directly linked to the CBD and Southbank and provided access to what he considered to be the best part of the Yarra.

And by encouraging a social experience where "the customer could make it their own", he said the model was proving successful for bringing new demographics to the river.

"One of the most amazing things that has come out of this is that over 50 per cent of our passengers are women and over 75 per cent of customers that book are female and we believe it's a new demographic to the river and that's really good."

[goboat.com.au/melbourne](http://goboat.com.au/melbourne)

# E-scooters could be in town for summer

By Meg Hill

**While the state government is yet to let e-scooters into Melbourne, Lime has been gunning for a summer trial in either the City of Melbourne (CoM) or the City of Port Phillip.**

The company conceded to City of Melbourne concerns about the Hoddle Grid to further negotiations in the city while the City of Port Phillip has volunteered to run a trial.

Lime's director of government affairs and strategy APAC Mitchell Price said the company would make the Hoddle Grid non-operational.

"Perhaps we make our operations zone outside the Hoddle Grid so that scooters wouldn't be zipping around right in the middle of the epicentre where there are some problems with food delivery bikes, cars, trams, a whole range of different things," Mr Price said.

"For the moment I think what we'd be willing to do is make some concessions and say how about we start with the outer City of Melbourne ring. We obviously want to be in the CBD but what we haven't got is data that shows usage and people wanting to use the service."

But Dean Robertson, City of Melbourne on-street compliance services manager, told a residents meeting on October 3 that the council wasn't interested in a trial.

Lime has used technology to create out-of-bounds areas, where scooters can't operate. The technology also makes speed limits tailored to specific areas unbreakable.

Mr Price said that once scooters were available in inner city suburbs like Richmond and Fitzroy, data would show that the scooters were being used to travel to the CBD and Docklands and Lime would be able to "shrink that operating no-go zone to be smaller and smaller".



(L-R): Lime director of government strategy Mitchell Price, University of Melbourne lecturer Dr Patricia Lavieri, City of Port Phillip Mayor Dick Gross and associate professor Hussein Dia at a panel discussion on e-scooters last month.

"City of Melbourne has been pretty up front with the Hoddle Grid, and I understand their issues because they've got lots of different things, cars, bikes, motorbikes, food delivery bikes, mopeds and people."

At the same time, the City of Port Phillip is pushing the state government to regulate e-scooters so it can be the first to trial Lime.

Port Phillip Mayor Dick Gross announced the decision at a panel discussion about e-scooters on September 17 where Mitchell Price was also speaking on behalf of Lime.

But the offer is redundant unless the state government moves to regulate e-scooter use.

"What we've learnt today is that Port Phillip are really keen to do a trial of e-scooters and they were the first council to pass a motion in support," Mr Price said.

"I think Port Phillip is ideal. Not only is it a tourist hub in summer but is also provides an opportunity to run a proof-of-concept trial in Melbourne. Now it's up to the state to provide the regulatory framework and we ask the minister [for transport] to strongly consider this."

Southbank Local News understands the state government is participating in a national investigation by the National Transport Commission to investigate the safe use of innovative vehicles and motorised mobility devices.

A Department of Transport spokesperson said safety was the government's top priority "and any trial would need to consider this".



OsteoStrong helps improve:

- Bone Density
- Balance
- Strength
- Joint and Back Pain
- Long Term Blood Glucose (HbA1c)

Only one 10-minute session a week, no sweat, normal clothes.

OsteoStrong South Melbourne  
378 Clarendon St, South Melbourne  
P: 7004 1284  
E: [sthmelb@osteoststrong.com.au](mailto:sthmelb@osteoststrong.com.au)

Contact us for a Complementary Session



ANL 2019 Maritime Art Prize Exhibition

Addressing the theme: The Relationship of Humanity to the Sea

October 4 - 20th, 10am - 8pm

Visit to see Award winning works & Vote for the People's Choice Award!

Mission to Seafarers  
717 Flinders St  
Docklands

[missiontoseafarers.com.au/art-prize](http://missiontoseafarers.com.au/art-prize)

Tom O'Callaghan, 'Set Sail', 2018



The notorious taxi rank at Riverside Quay.

# Eureka taxi jam

By David Schout

**Scores of taxis are parking illegally outside Eureka Tower in what the City of Melbourne says is part of a “serious policy issue”.**

A recent council survey reported as many as 36 cases of “illegal parking or bad behaviour” around Riverside Quay in a one-hour period on a weekday afternoon.

The taxi hotspot has long been a source of contention among local residents and workers, who have complained of extensive illegal parking and constant honking of horns.

In a meeting with key stakeholders, council’s manager of engineering services Jenny Bailey said the issue had been exacerbated by the surge in taxi licences that had come with ridesharing apps like Uber.

“The taxi rank here (outside Eureka) has been a problem for a long time that is

getting worse and worse, and this problem is replicated throughout the city in terms of taxis consistently illegally parking in loading zones, and double parking,” she said.

In July, *Southbank Local News* reported of taxi overcrowding on Riverside Quay and even complete blocking of nearby Cook St.

Council enforcement officers and nearby workers have reported cases of verbal abuse from drivers.

“We’re dealing with an intractable problem here,” Bailey said.

“Everyone wants to drive their vehicles, and there just simply isn’t enough space to store them.”

The Eureka issue is part of a city-wide concern, solutions to which will involve the state government and a powerful taxi lobby group.

Eureka Tower general manager Antoinette Hall said she was pleased with the council’s proactive approach to the issue.

The council has said it will consider removing the rank altogether but not before further consultation.

# Fishermans updates

**The City of Port Phillip has deferred the community consultation process for the proposed renaming of Fishermans Bend’s new suburbs of Montague, Sandridge and Wirraway.**

At a council meeting held on September 18, councillors unanimously agreed that the process for consulting on the proposed name changes would commence after the finalisation of the state government’s Fishermans Bend precinct plans.

At its planning committee on September 25, councillors also reviewed three Fishermans Bend planning proposals at 339 Williamstown Rd, 118 Bertie St, and a lot of applications for four separate developments on Normanby Rd.

Councillors unanimously supported amended proposals for Williamstown Rd and Bertie St, however, the Normanby Road applications, which comprised four different tower proposals by different

applicants, only received partial support.

Three 20-storey towers at 264-270, 256-258 and 248-250 Normanby Rd were not supported by council, while the fourth, a 36-storey tower at 203-205 Normanby Rd, Southbank, was endorsed subject to conditions.

A lack of affordable housing, height and wind and noise impacts were cited among a number of key reasons by council officers for not supporting the first three Normanby Rd applications.

The 20-storey application for Bertie St, located in the Sandridge precinct, proposes 165 one-, two- and three-bedroom build-to-rent apartments, 485 sqm of retail floorspace and 317 sqm of commercial office space.

Council also supported amended plans for 339 Williamstown Rd, located in the Wirraway Precinct, which would see 23 apartments delivered over 13 levels on a site immediately adjacent to J.L. Murphy Reserve.

All applications will now be referred to the Minister for Planning Richard Wynne for approval.



A render of a 20-storey proposal for Bertie St, Port Melbourne.

**GOOD COMPANY.  
GREAT FOOD.  
AMAZING VIEWS.**

Discover a unique collection of riverside restaurants, cafes, bars, boutique shopping and everyday needs. Open daily, including public holidays.

southgatemelbourne.com.au   

**southgate**

# Forum catch up highlights 4D future

By Spencer Fowler Steen

*The Fishermans Bend Business Forum (FBBF) hosted a members' catch up night at Starward Distillery in Port Melbourne last month, which showcased the government's new 4D mapping technology that will be used in the precinct.*

Attended by the likes of Fishermans Bend Development Board chair Meredith Sussex and the new head of the Fishermans Bend taskforce Emily Mottram, the event on September 11 provided a first look into the new technology facilitated by University of Melbourne representatives.

The state government announced in August that in a first for Victoria, 4D mapping technology would be used to plan the development of Fishermans Bend.

The "digital twin" project will deliver 3D modelling of infrastructure over time - the fourth dimension - above and below ground, allowing planners to visualise the impacts of their decisions before they are made.

University of Melbourne Professor Abbas Rajabifard told *Southbank Local News* that digital twin technology made a virtual copy of real, physical objects that people could see and interact with in virtual reality.

"The Fishermans Bend digital twin allows us to collect, manage and visualise complex information using geospatial innovations to make better decisions about future cities," he said.



Meredith Sussex, Richard Blackman, Emily Mottram, Tanya Quick, David Weston and Bernadene Voss.

Using real world data about things such as soil type, water levels and sewerage pipe conditions, the technology allows planners to see accurate simulations of what would happen to assets such as roads, public transport and buildings over time.

It will also be able to provide warnings about

imminent faults or problems in the physical environment.

One of the advantages over traditional modes of planning, is that it integrates previously separate sets of data in one easy to access place.

It does away with the need for archaic paper

plans and unwieldy pdf documents, allowing other industries to easily come in and innovate on one central, open plan.

The project is a collaboration between The University of Melbourne, CSIRO's Data61 project, Melbourne Water and various other stakeholders.

Recently, CSIRO's Data61 project have been using the same digital twin technology to help prawn farmers make sense of massive amounts of data on water quality.

The researchers use virtual reality headsets and graphics from the gaming world to visualise and interact with data in order to monitor and improve production systems in real time.

The University of Melbourne also stands to benefit from the digital twin project, having recently purchased land at Fishermans Bend to build a new engineering, design and IT campus.

Fishermans Bend, an area roughly three quarters the size of Melbourne's CBD, is expected to house around 80,000 residents and employ the same number by 2050.

*Oaks Day*

PAUL LOUIS ROOF TOP CHAMPAGNE GARDEN  
 FREE FLOWING ALL INCLUSIVE DRINKS PACKAGE  
 CANAPES, FINGER FOOD AND SWEETS  
 BEST DRESSED WINS A BOTTLE OF LAURENT PERRIER  
 82" PLASMA SCREEN  
 THURSDAY 7TH NOV  
 12-5PM

TICKETS AVAILABLE AT THE GOLDEN FLEECE HOTEL OR AT [EVENTBRITE.COM.AU](http://EVENTBRITE.COM.AU)

ALL  
**FUNCTIONS**  
 GREAT & SMALL

Corporate & Private | Rooftop Deck • Private Bar • Beer Garden | 120 MONTAGUE ST SOUTH MELBOURNE | PHONE: 9696 9662

**Docklands Directory 2020**

**Southbank Directory AND SOUTH WHARF 2020**

**2020 bookings open!**

The annual printed Docklands and Southbank directories are pre-eminent guides featuring listings of every business as well as useful information and maps.

With a shelf-life of 12 months, there is no better way to position your business in front of local residents, workers and visitors in Docklands and Southbank.

Premium positions are available, as well as half and full-page advertisements within the categories: What to do, Where to stay, Where to Eat/Drink, Beauty Health & Fitness and Where to Shop.

**Docklands Directory BOOKINGS CLOSE NOVEMBER 13**

**Southbank Directory BOOKINGS CLOSE DECEMBER 12**

SPEAK WITH JACK HAYES ON 0401 031 236 TO DISCUSS HOW THE DIRECTORY CAN HELP YOUR BUSINESS  
[JACK@HYPERLOCALNEWS.COM.AU](mailto:JACK@HYPERLOCALNEWS.COM.AU)

What to do | Where to stay | Where to Eat/Drink | Beauty, Health & Fitness | Where to Shop

# THE ARTS PRECINCT

# KAWS

By Spencer Fowler Steen

A new exhibition at the National Gallery of Victoria (NGV) explores themes of loneliness, social isolation, friendship and generosity on a large scale.

Think seven-metre tall bronze statue sort of scale.

Internationally renowned US artist Brian Donnelly, also known as KAWS, has built more than 100 giant bronze statues and other weird and wonderful cartoon-inspired sculptures over his 25-year career.

His work features altered pop-culture figures inspired by his early beginnings in the 1990s New York street art scene.

Always the ambitious graffiti artist, KAWS expanded across Jersey City and Manhattan through painting large-scale pieces on walls, billboards and the sides of freight trains moving across the country.

During this time he developed his signature motif, the skull and crossbones, which he painted over the faces of people in late '90s Manhattan advertising posters, a



KAWS PUBLIC INTERVENTIONS Acrylic on existing advertising posters.

process he called "subvertising."

NGV director Tony Ellwood said the exhibition, titled *Companionship in the Age of Loneliness*, combined humour, melancholy, hope and humanity to create a "truly contemporary" perspective that had connected with audiences world-wide. "KAWS really does engage with universal feelings of isolation and loneliness. His larger than life sculptures are playful, toy-like figures, however on closer inspection, they also reveal a fragility and a darkness through their vulnerability," he said.

His colossal new statue, *GONE*, is an emotional representation of loss with the pose reminiscent of the famous Renaissance sculpture *Pietà* by Michelangelo, which depicts the lifeless Christ cradled in his mother's arms after the crucifixion, according to the artwork label.

In another series of paintings recreating the popular American-Belgian animated television series *w* the label said KAWS turned the individual characters into a frightened group seemingly menaced by a dictatorial Papa Smurf.

Alongside these dark depictions,



KAWS KURFS (Papa) acrylic on canvas.

there's also a free child exhibition called *KAWS: PLAYTIME* offering a rich sensory experience with interactive multimedia.

The exhibition allows kids to explore



KAWS Statue GONE.

colourful nooks where they can use "creative kits" and pose in a photo booth with custom filters designed by KAWS, with the option to share their photos on social media.

Minister for the Creative Industries Martin Foley said the main exhibition was a reminder of how social isolation and loneliness were increasingly a risk in this "complex and hectic" modern world. "Through exhibitions like this we can see that connection is vital to our wellbeing, our minds and our collective society," he said. "It brings people together from our increasingly diverse community."

Both exhibitions will be on display from September 20, 2019 to April 13, 2020 at NGV. Adult tickets for *Companionship in the Age of Loneliness* are priced at \$20, \$17 for concession card holders and \$10 for children.



# Haroon Mirza @ ACCA

By Edward McLeish

This month, the Australian Centre for Contemporary Art (ACCA) will present *The Construction of an Act*, a survey of works from acclaimed London-based artist Haroon Mirza.

On October 8, two live performances from the 42-year-old artist took place at 6.30pm and 8pm. Both shows featured collaborators from Australian and London-based composers, performers and choreographers.

Visitors experienced sculptural assemblages, indicative of Mirza's early work, and engaged in a complex dialogue with their use of everyday materials from his live performance.

The materials included showerheads and buckets, simple LED lighting strips, outmoded electronics, found footage and musical instruments.

Mirza likens his methodology to that of a composer, arranging the aesthetic and acoustic properties of materials and space into new audible, visual and haptic forms.

His diverse artworks are linked through the manipulation of electricity, and share an interest in modes of perception that go beyond the ocularcentric (a perceptual bias ranking vision over other senses) inherent to the visual arts.

In association with the Melbourne International Arts Festival, *The Construction of an Act* will use ACCA's vast architecture

as a reverberation chamber in which a disparate body of works will come together to form a conceptual and sonic whole.

New to ACCA and aligning with the festival, Mirza has constructed a residency studio within the gallery as a space to invite local and international collaborators to undertake weeklong residencies and live performances.

The residency studio illustrates the turn towards experimental, open-ended and collaborative working methods that have become a hallmark of the artist's recent practice.

It is blurring the boundaries of artistic authorship and transparently revealing the process of both art and exhibition making.

Every year ACCA International brings an artist to Melbourne at a pivotal point in their career – often presenting their work to Australian audiences for the first time.

Mirza has won prizes including a Silver Lion for Most Promising Artist at the 2011 Venice Biennale, the Zurich Art Prize and Nam June Paik Centre Award in 2014, and the Calder Prize in 2015.

[acca.melbourne](http://acca.melbourne)



Haroon Mirza: Copy of Pavilion for optimisation.



Haroon Mirza: The construction of an act.



Green studio.



Haroon Mirza: Stimulate pineal function.

Critic



## Best friends are hard to come by

By Rhonda Dredge

One of the great things about art is that it taps into an underlying feeling that has yet to fully hit you in the face.

Brian Donnelly was an outsider living in Jersey City across the river from New York when he first started out.

He joined up with a graffiti gang but his true talent was for character.

A sketchbook from 1993 shows an illustration of humanoid characters with large saucer eyes, pursed mouths and flaccid bodies.

One of the characters is about to pull a lever, presumably blowing up the world and all that it contains.

The illustration is not just an idea by a discontented 19-year-old but a fully-realised painting with a carefully shaded sky and an enclosure for the creatures.

Luckily Brian did not abandon his talent for illustration to run amok with taggers but he developed it to the point that he was creating his own characters and manufacturing them through his own *Original Fake* label.

BFF is his most-winning product; a koala-shaped character made out of blue hairy vinyl, with a nose and two crossed-out eyes above the head.

BFF stands for Best Friend Forever, and that's where Brian (known commercially as KAWS) hits the right note. Best friends have died out. He proves that with the droopy figure of BFF in his latest release *Gone 2019*

as the creature dies in the arms of his mate.

*Gone 2019* was for sale for \$990 in the store at the National Gallery of Victoria (NGV) and it was sold out; more evidence for the need for *Companionship in the Lonely Age*, the title of the exhibition.

Teenagers were swarming over the large-scale companions and others were left with the feeling that best friends are hard to come by.

These days everyone is a friend but old mates are too busy to catch up, hence the loss that is now part of everyday life.

The pat way Americans have of labelling complex emotions is annoyingly cute but this exhibition, despite its crass commercialism, does contain some truth.

The 21<sup>st</sup> century subject is incredibly busy receiving messages but most are from your provider.

This is a message to all those out there who still read print: head to the KAWS Inc website if you want to know any more.

Self-promotion is where it's at and a vinyl BFF could be your answer.

This is a great exhibition, showing how a talent can be nurtured by the School of Illustration in Manhattan and Walt Disney, to the point that it replicates itself.

KAWS, *Companionship in the Lonely Age*, National Gallery of Victoria, until April 13.

HAROON MIRZA:  
THE CONSTRUCTION OF AN ACT

14 September –  
17 November 2019

Australian  
Centre for  
Contemporary  
Art

111 Sturt Street  
Southbank VIC  
Melbourne  
Australia 3006

Exhibition Partners: Performance Partners: Publication Donors: Government Partners:

Images: Haroon Mirza, *Pavilion for Optimisation* 2013, installation view, Museum Tinguely, Basel 2015 © Museum Tinguely, Basel. Photograph: Bettina Matthesen

acca MELBOURNE International Arts Festival

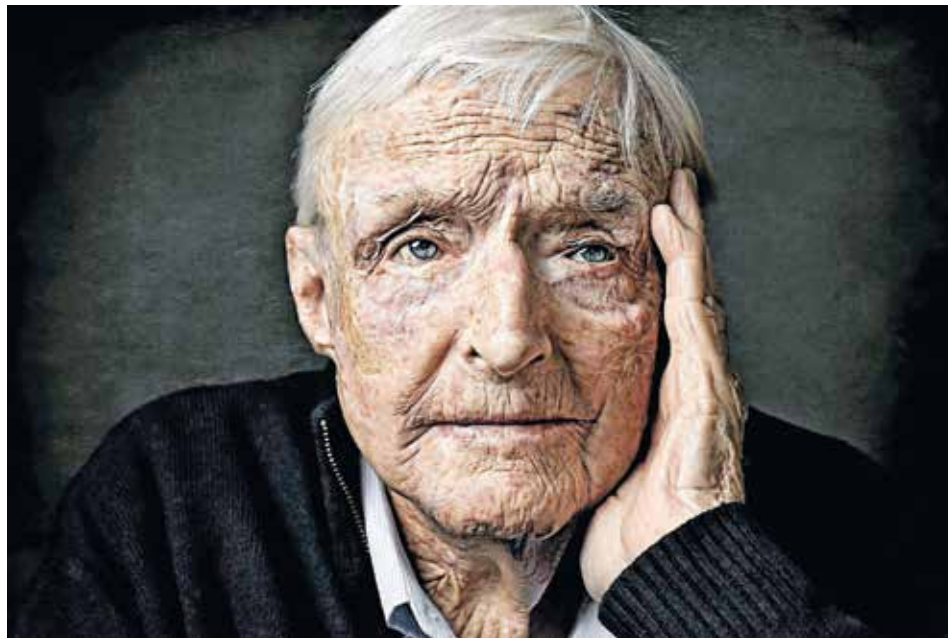




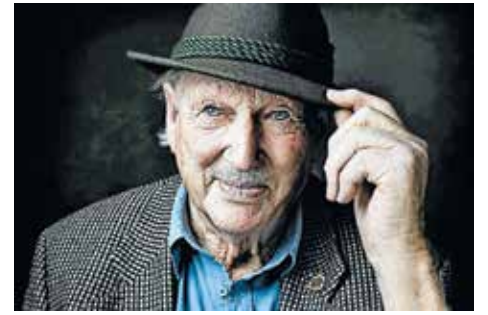
CHRISTINE ANSONGE

# Journey to photo-journalism

An advanced diploma graduate from Photography Studies College (PSC), Christine Ansonge spoke about her journey from being a photography student to shooting sport, events, portraits and breaking news.



Christine Ansonge - Elderly portrait prints.



Having previously worked as a full-time teacher, she said that she had only seriously considered switching to a career in photography during her final year at PSC.

"I had always loved photography, for as long as I can remember, but I never really considered it as a career option," Christine said.

"When I started studying at PSC back in 2013, I just wanted to know how to take better photos. I had no equipment at the time, and little technical or creative understanding; all I knew was that I wanted to learn everything I could."

"It wasn't until my final year, when I majored in photojournalism, that I started to think about becoming a professional photographer. My work was finally starting to be recognised which really boosted my confidence."

A former silver award winner at the Victorian Australian Institute of Professional Photography (AIPP), Christine was also previously selected to photograph a five-page spread for RACV's *RoyalAuto* magazine.

She said that it was such opportunities that inspired her to believe in herself and make the career switch from teaching to become a full-time photographer. And to her amazement, she said it wasn't long until she landed her first job.

"Initially I had expected to work as a

freelance photographer," she said. "As soon as the school year finished I had already planned to move to Alice Springs to join my partner who had been posted there for work."

"One night I received a message from one of my PSC friends telling me there was a job advertised at *The Centralian Advocate*, the local newspaper in Alice Springs, for a photojournalist. I couldn't believe my luck and of course I applied."

"After two phone interviews I got the job and moved up there as soon as I was able to."

She said that from day one, she was "really thrown in the deep end." From breaking news to photographing people, she the job provided her with ability to "engage with anyone."

When she eventually returned home to Victoria, she took on a new role at *The Standard* in Warrnambool, where she built on her experience photographing a range of topics in a "busy and fast-paced environment."

In September, The F Project Art Gallery in Warrnambool played host to her first photo exhibition *Nonagenarian*, which celebrated the lives of people in their 90s with 16 portraits and stories that challenged negative perceptions of ageing.

"It was during my time in Warrnambool that the idea for this project was born,"

Christine said. "On a few occasions I had been assigned the task of taking photographs of elderly people for the paper."

"They were all still active and healthy and often heavily involved in the community and I found myself really interested in their stories. I enjoyed talking with them and felt inspired by their spirit and love of life."

Gifted with the opportunity to spend real time getting to know her subjects, she said they were made to feel at ease, which ultimately made for great photographs.

"All up I probably spent about three hours with each of my subjects, chatting with them and then taking their portrait, all of which happened in their home. I like to keep my set up pretty simple so all I used was a backdrop, my camera and one flash with a soft box," she said.

Christine said that her experience photographing the elderly had been so fun that her next project would focus on capturing the images and stories of people 100 years of age and over.

"I would absolutely love to travel around Australia talking photos of centenarians in each state and compile this into a photo book. I'd also like to continue exhibiting my work in galleries, hopefully in Melbourne one day," she said.

[christineansorge.com](http://christineansorge.com)



Photo by Part-Time Student Denise Lawry



## Part Time Courses

Discover how to see in creative ways, use light to create mood and really start to make your mark with your photography.

Don't wait! It's exciting, fun and can be life-changing.

[psc.edu.au/courses/part-time-courses](http://psc.edu.au/courses/part-time-courses)

All ages and skill levels welcome.

MASTERS | DEGREES | DIPLOMAS | CERTIFICATES | SHORT COURSES

Find out more

[PSC.EDU.AU](http://PSC.EDU.AU) +613 9682 3191



[info@psc.edu.au](mailto:info@psc.edu.au) | 65 City Road, Southbank VIC 3006



## Ghost Gamelan

As part of the Melbourne International Arts Festival (MIAF), Melbourne Recital Centre (MRC) will present three of the many fine performances included on this year's line-up.

Among them will be *Ghost Gamelan*. Gamelan is traditional ensemble music from Indonesia. Erik Satie, Sonic Youth, Philip Glass and Miles Davis have all shared a fascination with the genre.

British-Australian singer Susheela Raman has spent the past decade exploring the spiritual music of Asia. She and her guitarist Sam Mills will present an enthralling concert *Ghost Gamelan* at Melbourne Recital Centre on Saturday, October 18 at 8pm. The resulting album of the same name is exquisite with the *Financial Times* in London describing it as "leaving the listener wanting more. By letting the songs breath, this album and her concert delivers precisely that."

Sam Mills travelled to Java to transform their songs with contemporary Javanese gamelan composer Gondrong Gunarto. *Ghost Gamelan* is full of ancient echoes but achieves something unique, thrilling and contemporary. "Mesmerising" according to the *Financial Times*, while *The Guardian* (UK) labelled it as "Wildly Original."

The other two performances that MRC will also present in association with the MIAF include *Stalin's Piano* featuring pianist Sonya Lifschitz who will perform this electrifying new work conceived by Australian composer Robert Davidson. The performance will take place on October 17 at 7.30pm Elisabeth Murdoch Hall.

The other show will see the stunning Australian flautist Lina Andonovska return home after performing around the world. A name that you'll discover on both the pages of *Rolling Stone* and the Australian Chamber Orchestra line up, audiences will be quick to recognise why Andonovska is a rare breed in the flute world. She will perform in the Primrose Potter Salon for one hour on October 18.

[Melbournerecital.com.au](http://Melbournerecital.com.au)



Claire Richardson.

## ACCA gets new executive director

For the Australian Centre for Contemporary Art's (ACCA's) new executive director, a return to the arts precinct – and specifically Sturt St – has been a long time coming.

Claire Richardson once worked the front of house right next door at the Malthouse Theatre.

Since then she's managed exhibitions at the National Gallery of Victoria, TarraWarra Museum of Art and at the City of Stonington.

"I always loved art, so I actually studied art history and a Master of Creatorship at the University of Melbourne and then I started going more into exhibition management," she said.

"I've always just loved artists, artistic vision, creativity, but I'm not creative myself and so it's been a really wonderful pairing

for me to have that arts administration and management experience and business experience."

For that reason, she said, her new role was the dream job.

"It's a really great role at a really wonderful institution that I've known and respected for a long time," she said.

"ACCA has a uniqueness that I think is very much based on the artistic program. It's a really fantastic program that looks at emerging artists but more established artists as well."

After her first week in the role, Claire told *Southbank Local News* ACCA was working

on a renewed strategic vision and she was excited for the 2020 program.

"The program is really exciting, it's extending the kinds of series so there'll be some shows with a single artist, international artists, Australian artists, some groups as well," she said.

"ACCA's focus on artists is fantastic but it's a focus on wider contemporary practice as well, so not just visual arts, but perhaps different forms of creative output."

"It makes it a really exciting place to be and to be involved with. I think I'm very excited more than overwhelmed."

## New face at MRC

Meet Melbourne Recital Centre's (MRC's) new chair, Andrea Hull AO.

No stranger to the arts, Andrea Hull commenced her term as chair of MRC in June this year and she brings a wealth of experience to the role having worked extensively in Australia's cultural and not-for-profit sectors.

She said her first memory of music was listening to *ABC* radio.

"It was always on in our home. When I was young my parents moved to Cairns in far-north Queensland and Dad's aunt had given him her old John Broadwood & Sons piano, an early, small upright which accompanied us north."

"She [Andrea's aunt] was a pianist of the old style with family gatherings around her piano and large fat books of melodies. I loved to 'play' when we visited her."

Andrea's favourite composers are



Andrea Hull.

Elgar and Cohen. "Elgar's *Cello Concerto in E minor* (especially as played by Jacqueline du Pre) and Cohen's *The Anthem* are among my favourites," she said.

Andrea said that her biding passion had been to contribute to an authentic,

distinctive and inclusive Australian cultural life.

"It has been a privilege to work in the cultural sector for over four decades in pursuit of this. The opportunity to chair the centre really is the icing on the cake."



## GREY ROCK

Oct 9 - 12 - *Malthouse*

In a small village on the West Bank, a former TV repairperson secretly builds a space shuttle to reach the moon. Without money or technology—but convinced that curiosity is stronger than gravity—Yusuf works passionately in the backyard shed. When Yusuf's family and friends discover this unimaginable project, things begin to fall apart.

[malthousetheatre.com.au](http://malthousetheatre.com.au)



## BLACK IS THE NEW WHITE

Until Nov 6 - *Southbank Theatre*

A mix of *Guess Who's Coming to Dinner* and *Meet the Fockers*, Nakkiah Lui's smash hit comedy is set to delight Melbourne audiences. Charlotte Gibson is a lawyer with a brilliant career ahead of her. As her father Ray says, she could be the next female Indigenous Waleed Aly. But she has other ideas.

[mtc.com.au](http://mtc.com.au)



## THE NICO PROJECT

Oct 11 - 19 - *Playhouse*

German-born Christa Päffgen blazed onto the American music scene like a meteor. Her 1967 debut with The Velvet Underground spawned one of rock's most enduring works, but rather than becoming devoured by the New York arts scene she risked it all, shunned the limelight and dedicated the years until her premature death creating a body of work that was pioneering and marginalised, but all hers.

[artscentremelbourne.com.au](http://artscentremelbourne.com.au)



## THE GLENN MILLER ORCHESTRA

Oct 27 - *Hamer Hall*

The world-famous orchestra returns with a brand new programme, featuring 21 musicians, singers and dancers on stage. Expect all the famous Glenn Miller classics including *Moonlight Serenade*, *Tuxedo Junction* and of course, *In The Mood*. With special guest Broadway dancers in gorgeous costumes swinging to all your favourite big band songs.

[artscentremelbourne.com.au](http://artscentremelbourne.com.au)

## AUSTRALIAN MUSIC VAULT

Ongoing - *Arts Centre Melbourne*

The Australian Music Vault features a free, immersive exhibition showcasing Australian music, innovative digital participatory experiences and iconic objects from our Australian Performing Arts Collection.

[australianmusicvault.com.au](http://australianmusicvault.com.au)

## TERRACOTTA WARRIORS & CAI GUO-QIANG

Until Oct 13 - *National Gallery of Victoria*

In a dual presentation of Chinese art and culture past and present, the Melbourne Winter Masterpieces series at the National Gallery of Victoria presents China's ancient terracotta warriors alongside an exhibition of new works by one of the world's most exciting contemporary artists, Cai Guo-Qiang.

[ngv.vic.gov.au](http://ngv.vic.gov.au)

## THE CONSTRUCTION OF AN ACT

Until Nov 17 - *ACCA*

Haroon Mirza's first solo exhibition in Australia, in collaboration with a crew of other artists. His diverse artworks are linked through the medium and manipulation of electricity, and share an interest in modes of perception that go beyond the ocular-centrism inherent to the visual arts.

[acca.melbourne.com.au](http://acca.melbourne.com.au)

## BACKSTAGE TOUR

Sundays - *Arts Centre Melbourne*

Over 90 minutes, specially-trained guides reveal the secrets of Arts Centre Melbourne's theatres. You will gain unique access to backstage rooms, hidden passageways and technical contraptions unknown to anyone but our production crews and performers.

[artscentremelbourne.com.au](http://artscentremelbourne.com.au)



## WONDERS

Until Oct 20 - *Spiegeltent*

Scott Silven isn't just one of the world's finest mentalists and illusionists – he's the rare sort of master who elevates his craft to the highest level of art. With *Wonders*, Silven takes his audience on an intimate walk through the corridors of the mind, furnished by their own memories and lit by his keen and surprising insights.

[artscentremelbourne.com.au](http://artscentremelbourne.com.au)



## DAME EDNA

Oct 23 - 27 - *State Theatre*

The grand dame of world theatre, Dame Edna Everage, has been forced out of retirement by the demands of her adoring "Precious Possums". In a letter to her fans, Dame Edna apologised for upsetting them when she announced her retirement from public life, blaming her manager, "failed actor and attention seeker" Barry Humphries.

[artscentremelbourne.com.au](http://artscentremelbourne.com.au)



## THE PSYCHOLOGY OF SOUNDS FORUM

Oct 28 - *ACCA*

Building on the considerations of sound and the voice in healing and transcendence in ACCA's exhibition *Haroon Mirza: The Construction of an Act*, this event brings together sound artist and co-director of *FutureTense*, Fjorn Butler; and music therapist at the Peter McCallum Cancer Centre, Stephan Skov; with exhibition curator Annika Kristensen.

[acca.melbourne.com.au](http://acca.melbourne.com.au)



## JEKYLL AND HYDE

Oct 25 - 26 - *Hamer Hall*

The wait is finally over! 25 years after Anthony Warlow recorded the highly celebrated *Jekyll & Hyde Complete Works* double CD, audiences at last will experience Anthony performing the musical in the most thrilling and highly anticipated theatrical event of the year, starring a host of celebrated opera, TV, film and music theatre performers.

[artscentremelbourne.com.au](http://artscentremelbourne.com.au)

# SOUNDPROOFING WINDOWS

FOR BODY CORPORATE AND HERITAGE LISTED HOMES AND APARTMENTS



NO NEED TO REPLACE YOUR EXISTING WINDOWS TO ACHIEVE DOUBLE GLAZING

Stop Noise will come to your home for a FREE demonstration and show you how we can reduce noise by up to 70% coming through your existing windows.

Stop Noise secondary glazing system is equally as good as replacement double glazed windows for your thermal insulation and twice as good for reducing noise. There is simply no better option. Save money on your energy bills and get a great night sleep.

Stop Noise is a trusted family owned and operated Melbourne based business since 1995.

VISIT US ONLINE! [WWW.STOPNOISE.COM.AU](http://WWW.STOPNOISE.COM.AU)



Call today to organise a free assessment of your windows & doors

1800 880 844

[info@stopnoise.com.au](mailto:info@stopnoise.com.au)

Office & Showroom- 15 Industry Blvd, Carrum Downs 3201

# Cycle into Tour de Moray!

By Edward McLeish

**Southbankers can pedal into spring and try out the newly upgraded Moray St bike corridor as part of a six-week everyday riding festival.**

The City of Port Phillip will launch the inaugural *Tour de Moray* festival on October 16, with a free breakfast at South Melbourne Market on *National Ride2Work Day*.

City of Port Phillip Mayor Dick Gross said he hoped the event would encourage riders to take to the road.

"Bike riding is a fantastic way to get around and Moray St's recently upgraded bike lane and Victoria's first protected roundabouts are a great example of the user-friendly bike corridors we want across Port Phillip to encourage riders of all ages and abilities," Cr Gross said.

"You don't have to be super fit or lycra-clad to enjoy riding around our beautiful city."

The recent bike lane upgrades in Moray St



The new bike lanes on Moray St, which run from Albert Rd, South Melbourne to City Rd, Southbank.

include fully separated bike lanes from City Rd, Southbank and Victoria's first protected roundabouts, which provide cyclists with a more practical bike route from Albert Park to the CBD.

The upgrades were delivered in 2018 in partnership with Rail Projects Victoria as part of the Metro Tunnel Project.

In addition to the breakfast launch, one of the features of *Tour de Moray* is the free Bike

Scavenger Hunt on October 26.

There'll be pop ups and freebies looping around South Melbourne, guided bike tours of the *Tour de Moray* route, rickshaw rides for non-cyclists, family activities hubs at South Melbourne Town Hall and Emerald Hill Library, and free food at South Melbourne Market and Albert Park Lake.

*Tour de Moray* also features a bike story time, bike-themed book display and local

history exhibit at the Emerald Hill Library, free bike tune-ups from Back2Bikes and bike confidence courses, concluding with a shop-by-bike day at South Melbourne Market on November 23.

All events are free except for the bike confidence courses, which have a small cost and require bookings.

[portphillip.vic.gov.au/festival-everyday-riding.htm](http://portphillip.vic.gov.au/festival-everyday-riding.htm)



## Gymnastics club goes back-to-back

By Edward McLeish

**The Montague-based Fishermans Bend Gymnastics Club (FBGC) was recently awarded the winner of Gymnastics Victoria's 2018 Medium Club of the Year for a second consecutive year.**

On Gymnastics Victoria's awards night, the FBGC, located on Boundary St, was presented the award, which was determined by a voting panel comprising senior Victorian gymnastics representatives and technical committees.

FBGC Communications manager Mandy Moore said the club was thrilled to be recognised by its peers, industry figures and Gymnastics Victoria as being the leading club in Victoria its category.

"It's testament to the outstanding efforts of our coaches, administration team and voluntary committee who work tirelessly to improve our programs and promote our wonderful club," she told *Southbank Local News*.

The medium category clubs have gymnast enrolments of 400 to 700 people, while the award was presented in front of 600 gymnastics representatives, officials and fans.

## Local lifesavers fly the flag

By Edward McLeish

**Sandridge Lifesaving Club members Laurelle Stalker and Kristina Meskauskaite recently competed for Australia at the World Surf Ski Titles in Quiberon, France.**

Our local Sandridge Lifesaving Club, located at the Boulevard in Port Melbourne, provides a range of opportunities for club members to participate in surf lifesaving sports locally, nationally and internationally.

Two active patrolling members, Laurelle Stalker (57) and Kristina Meskauskaite (43), competed against the world's best in Brittany, France last month as part of the International Canoe Federation (ICF) 2019 Ocean Racing World Championships.

Kristina raced in Masters (40-44 year age bracket) and finished third in her age group and was the seventh female across the line. Laurelle also competed in Masters (55-65 age group) and finished fourth. Both were the first from the club to compete at the event.

There were tough selection criteria to be met to be selected for the five places in each age group. This involved competing at a number of international and domestic races across the season and accumulating points along the way.



L-R: Laurelle Stalker and Kristina Meskauskaite.

According to both women, in a sport that now attracts some serious prize money, the competition is becoming tougher each season.

Add in the fact this sport requires paddling an ocean ski in conditions which are at Mother Nature's discretion and often with high winds and significant ocean swell. So, to gain national selection is no mean feat.

Both Laurelle and Kristina have attended regular squad sessions at the Sandridge Lifesaving Club often in the early morning when temperatures are less than inviting for most.

Both women have juggled the commitments of demanding full-time jobs and training which has proven quite a challenge.

The Sandridge Lifesaving Club is a volunteer-run organisation of lifesavers and paddlers, dedicated to keeping Sandridge Beach and its visitors safe.

New members are always welcome.

# Seniors celebrate in Southbank

**Southbank will host a number of events as part of this year's Victorian Seniors' Festival along with a week of free travel on all public transport from October 6 to 13.**

Those with a seniors Myki card can travel for free on all Melbourne trains, trams and buses, as well as regional trains, coaches and buses.

Minister for Disability, Ageing and Carers Luke Donnellan announced the free travel week for the one million-plus Victorian Seniors Card holders.

"We're excited to provide a free week of travel to senior Victorians just in time for the 37th Victorian Seniors Festival - our chance to give something back to older Victorians who contribute so much to this state," Mr Donnellan said.

"The festival is a key part of our support for seniors' health and wellbeing, and we want



all older Victorians to get involved and enjoy themselves with family and friends."

This year's festival theme is *Get into it!* and it encourages older Victorians to get involved in the more than 2500 events and activities taking place across the state.

Local activities in Southbank include:

**Eureka Skydeck:** Seniors can experience

this unique attraction for a discounted rate, with a ticket including a hot drink that you can enjoy while having a stroll through the sky.

**Plunge into spring:** This free event will be an opportunity for seniors to get up to date research information about aquatic exercise for strengthening, cardiovascular fitness and general wellbeing, with some practical



tips on how to start. There will also be a discussion about how to keep moving and motivated in spring, how to set yourself up for success and how to adjust your exercises. Get all the facts you need to stay active on October 14 at the Boyd Community Hub at 5.30pm

For the full program visit [seniorsonline.vic.gov.au](http://seniorsonline.vic.gov.au)

## Supporting a clean city

**The City of Melbourne is offering grants for creative waste management solutions.**

Lord Mayor Sally Capp said grants of up to \$5000 for community groups, schools and not-for-profits, as well as \$25,000 for startups and universities - including students and researchers - are up for grabs.

"We're looking for projects that could help reduce food waste, prevent litter, or deliver local solutions to household waste," she said.

The call for solutions comes amid a statewide recycling crisis following the collapse of embattled recycler SKM.

The Lord Mayor said the City of Melbourne had recently reached a temporary agreement to resume processing of household recycling while restructuring company KordaMentha sought to finalise the sale of SKM.

"We urge the community to continue separating their waste and recycling," she said.

"It's vital that general waste not be mixed in with recycling to ensure recycling services are sustainable and viable."

Chair of the City of Melbourne's environment portfolio Cathy Oke said the fund was just one way the council was working towards creating a circular economy where "everything has value" and "nothing is wasted."

Applications close October 16. To apply visit [melbourne.vic.gov.au/wastegrants](http://melbourne.vic.gov.au/wastegrants)



German Daniel Bielschmidt performs on the St Johns organ on September 19.

## Maestro performs at St Johns

**One of the world's best organists Daniel Bielschmidt put St Johns Southgate's grand organ through its paces with a special performance on September 19.**

As part of the 22<sup>nd</sup> anniversary of the Lutheran Church's Bach Cantata Program, St

Johns welcomed Mr Bielschmidt all the way from Leipzig University in Germany, who provided a taste of his virtuosic abilities on the organ - an instrument containing 1364 pipes!

As Leipzig University's organist, he performs in three churches in the city where JS Bach worked from 1723 to 1750 and is considered one of the world's best on the instrument.

He also performed at Walla Walla in New South Wales and Scots' Church in the CBD during his brief tour of Australia.



## Cash for containers

**A "Spring Clean" of Southbank and the CBD on September 21 called on the state government to establish a container deposit scheme (CDS) in Victoria.**

As part of World Clean Up Day, more than 300 volunteers picked up 6120 litres of rubbish along Southbank and in the CBD over just two hours. One third of what was collected were beverage containers, which would be exchanged for money in all other states and territories.

"There's an urgent need for the government to start a CDS," vice president of Beach Patrol Australia Dr Ross Headifen said. "When plastic bottles are given a value, they will not be treated as garbage because people get a reward for returning containers."

Participants also gathered on Southbank's red steps at Queensbridge Square as part of the event, holding a sign up in support of a CDS scheme.

## Owners' Corporation Law

# New Bill reads like a "favour for mates"

Strangely absent from the new Bill that was introduced into Parliament in the middle of September was a raft of consumer protections that would have prevented builders and developers from running roughshod and trampling over the legal rights of owners settling on new apartments.

For starters, the Labor government has ignored submissions from advocacy groups such as Strata Community Australia and We Live Here to reduce the threshold for commencing legal proceedings from a special resolution to an ordinary resolution (like in NSW, Queensland and other states). Instead, they have reduced the threshold to an ordinary resolution, but only if the legal proceedings are within the civil jurisdictional limit of the Magistrates

Court (\$150,000 or less). So, if an Owners' Corporation (OC) is faced with a serious management dispute, or a building defects claim, or an issue with the safety of the cladding, then the OC has no choice but to try and pass a special resolution (which of course are notoriously difficult, if not impossible to achieve).

Nowhere else in Australia imposes such a large obstacle to OCs for seeking legal redress. It acts as a barrier to justice and is an affront to civil liberties. Despite clear submissions and case studies being put to the Minister for Consumer Affairs, these pleas have been ignored. One can only conclude this is due to the need for this government to cosy up to developers and builders.

It's interesting also, to see that a clause has been entered into the Bill that would have the effect of preventing a developer from signing the OC up to a contract for more than three years into duration.

"Hooray," I might hear you say. That means those crooked 10-year embedded electricity contracts will become a thing of the past. The same as those 10-year cleaning contracts, or those 25-year caretaker

contracts, or those 10-year enterprise storage management (ESM) contracts or those 99-year serviced apartment/letting agreements.

Well, no. The exact wording of the clause requires that the developer is prevented from entering into these types of agreements, only if it "benefits" them.

Now, I'm not exactly sure how an OC is supposed to easily obtain evidence about this. If there is a commission payment or a kickback paid to the developer, there is hardly going to be a clause in the official contract about this. Nor will there be a proper disclosure or receipt being made. What if the payment is made to a related company of the developer? Or to the developer's wife or son? A family trust? A cash payment via an intermediary? A donation on behalf to a charity or school? Works in kind?

Hmmmm. It seems this new clause is not going to stop developers and their mates from signing up to these crooked contracts at all.

Again, clear and cogent evidence and case studies were put before the Minister for Consumer Affairs and her department about the need to just put a long-stop on these

agreements altogether. Make them three or five years maximum. That's it.

However, the decision by the government to ignore this recommendation means that it must have been done deliberately. One needs to ask parliamentarians the question: what good defensible reason is there for a developer to sign up an OC to a contractor of their choice to a binding contract for between 10 to 50 years? How is such a contract in the public interest?

The answer: it's not. It's only in the developer's interest, and the contractor's interest.

So much for this consumer property law review being about the owners and residents in high-rise buildings. It seems the review was more about ticking the box and further entrenching the rights of the rich and the powerful.

A great shame, and a great waste of time for all involved.



**Tom Bacon**

Tom Bacon is the principal lawyer of Strata Title Lawyers.  
[Tom@stratatitlelawyers.com.au](mailto:Tom@stratatitlelawyers.com.au)

## Business

# Walk the Plank from the top of Eureka Skydeck!

Back by popular demand, Eureka Skydeck invites you up to level 88 to Walk the Plank!

Prepare for a virtual reality experience like no other as the plank tests your limits, with only the bravest making it across to safety.

Eureka Skydeck invites you to round up your thrill-seeking mates for a race to the finish line or conquer your fear of heights from the comfort of a digital headset with The Plank, an exciting virtual reality experience that has visitors balancing on a plank, 285 metres above Melbourne.



Put on the headset and be instantly transported out to the edge. If staggering heights can't shake you, just try and overcome the strong Melbourne breezes and high-flying birds.

Providing a challenge for kids and parents

alike, the virtual activation simulates a treacherous balancing act, which will test those who pluck up the courage to navigate their way from one end of the plank to the other, all while having two feet planted firmly on solid ground.

The Walk the Plank experience will cost patrons \$10.00 per photo. Open from 10am - 10pm daily, the challenge is here for all to enjoy.

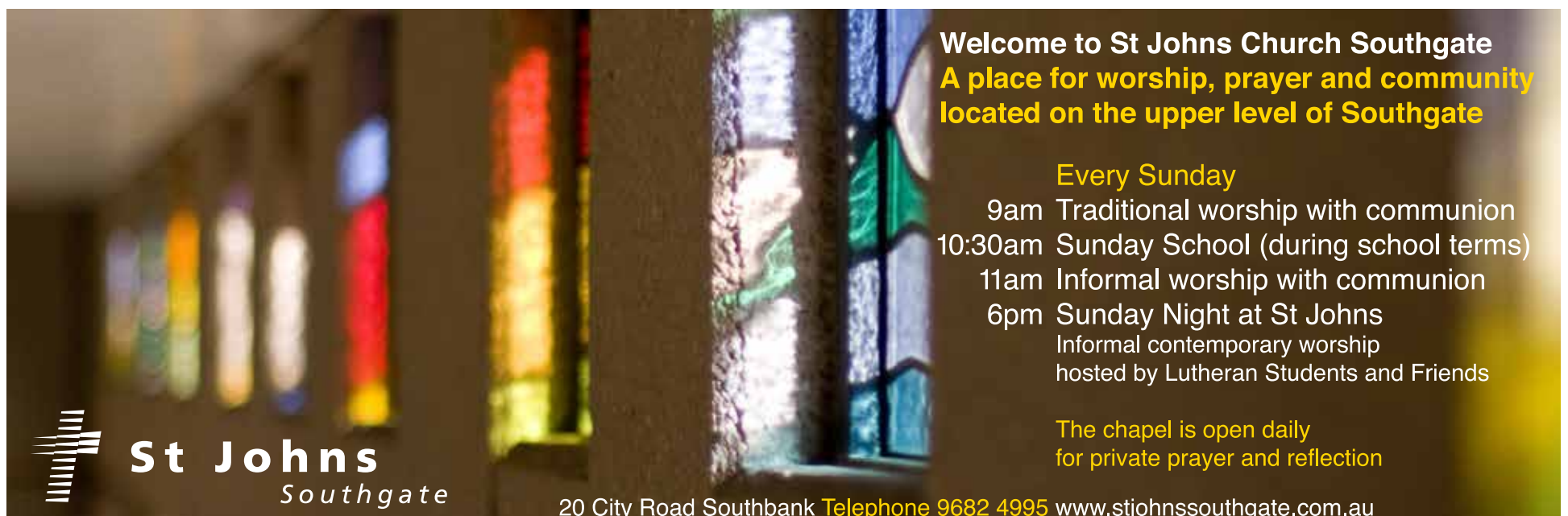
### About Eureka Skydeck:

Eureka Skydeck is the highest public vantage point in the Southern Hemisphere. Located on the 88th floor of Eureka Tower, the observation deck provides patrons with 360-degree floor-to-ceiling views of

Melbourne and beyond. Guests can also take full advantage of:

- **The Edge** - The world's only Edge experience is an awe inspiring three by three metre transparent glass cube, which slides out from the building on Level 88, suspending guests above the Melbourne skyline. Patrons can purchase their official photo taken while out on the Edge, ready for upload to Facebook, Twitter and Instagram.
- **The Outdoor Terrace** - Enclosed by a wire grid, the Outdoor Terrace exposes guests to the elements on Level 88. The Terrace is right next to the Edge, so family and friends can view those inside.


Southbank-based businesses wishing to be profiled in this section should email: [advertising@southbanklocalnews.com.au](mailto:advertising@southbanklocalnews.com.au)



**Welcome to St Johns Church Southgate**  
**A place for worship, prayer and community located on the upper level of Southgate**

**Every Sunday**  
9am Traditional worship with communion  
10:30am Sunday School (during school terms)  
11am Informal worship with communion  
6pm Sunday Night at St Johns  
Informal contemporary worship hosted by Lutheran Students and Friends

The chapel is open daily for private prayer and reflection



20 City Road Southbank Telephone 9682 4995 [www.stjohnssouthgate.com.au](http://www.stjohnssouthgate.com.au)

St Johns Southgate

# The intelligible answers of faith

When a perfectly intelligent friend tells you what they've recently gleaned from their horoscope, or how they're planning their pilgrimage to Mecca, or that they're going to be eating and drinking the body and blood of Jesus on the weekend, what do you think?

Do you listen politely, even with some interest, but find yourself wondering how on earth they can believe that they could, should or must take those things seriously?

If that's how you feel, I can sympathise. I personally believe some things that are objectively bonkers! I can happily acknowledge that, but it doesn't mean I don't believe their truth. For instance, in the Lutheran Church we, as best we're able, accept that when we eat a little wafer of bread and take a little sip of wine in front of the altar on a Sunday, that Jesus Christ is actually present in that food and drink. What? Yes, on one level it's crazy, but on another it makes perfect sense.

"Hang on a minute!" you might say ... "that's cognitive dissonance - that's going to cause a psychological disconnect, or at least a discomfort that's unhelpful and unhealthy!" I don't see it that way and I'm not alone. Many people of faith are able to, not just reconcile their beliefs with scientific reality, but hold them together as conjoined twins sharing the same blood supply. So, yes, I can say that what I sip at the altar is just fortified red wine, and what I eat there is just a stale piece of cardboard-tasting bread, but equally, that it is the true flesh and blood of Jesus given for the nourishment of my whole self. There's no dissonance or disconnect there, because it's a coherent, albeit unsolvable, equation. There's a true elegance in the way scientific reality and reality of faith intertwine and interlock - to the point that when they meet they can strike a beautifully harmonic chord.

Pope Benedict XVI once claimed that "the intelligence of faith has to become the intelligence of reality." I think he was onto something. People of faith don't believe in



fairy stories, even though some might argue that we never grew up to accept the hard truths of life. Faith is intelligible and people of faith should be able to speak about their faith in ways that makes sense - even if, in the end, they do make some supernatural claims.

The next time your religious friend mentions something of their spiritual beliefs or practices, rather than just wondering why or how they can believe those things, consider asking them about it. You might just find they have an intelligible answer.



**Tom Hoffmann**  
Tom Hoffmann is the pastor at St Johns Southgate Church.  
[www.stjohnssouthgate.com.au](http://www.stjohnssouthgate.com.au)



Metro Tunnel



# Acoustic shed construction underway

If you've taken a tram down St Kilda Rd recently you would've noticed a new temporary structure taking shape at the Anzac Station site.

An acoustic shed - 75m metres long, 20 metres high and 30 metres wide - is being built over the construction site to minimise potential construction impacts such as dust, light and noise during 24-hour tunnelling and excavation works.

The acoustic shed will be coloured eucalypt green to blend in with the St Kilda Rd boulevard and nearby Royal Botanic Gardens and Shrine of Remembrance.

Acoustic sheds are a common site on construction sites in dense, urban environments to minimise impacts for people living and working in the area.

Once construction of the shed is complete, it will house three inbuilt gantry cranes that will be used to assemble the tunnel boring machines once excavation works are finished.

When tunnelling begins in 2020, the cranes will also move concrete segments - used to line the tunnel - from the surface onto the tunnel boring machines working underground.

Once tunnelling and station construction is complete, the shed will be removed from St Kilda Rd and the materials recycled.

The new Anzac Station will be 300 metres long, 30 metres wide and 22 metres below St Kilda Rd.

## St Kilda Rd tram and road realignment in October

Public transport users are advised to plan ahead as buses replace trams on St Kilda Rd between the Shrine of Remembrance and Commercial Rd from October 13 to 27.

During this time, crews will work 24/7 to realign the road and tram lines so construction of the middle section of the new Anzac Station box can begin.

St Kilda Rd will remain open to motorists and cyclists during these works. However, people are encouraged to plan ahead and use alternative routes where possible.

To help people move through the area, there will be customer service employees and signage to help passengers access replacement bus services.

Following the realignment of St Kilda Rd and tram tracks, construction will begin on the station walls and roof of the middle section. This will join the northern and southern sections to create the full 300 metre station box under St Kilda Rd.

The walls and station roof of the middle section will be complete next year, prior to tunnelling starting.

For more information visit [metrotunnel.vic.gov.au](http://metrotunnel.vic.gov.au)

# Open for business

Flora Indian Restaurant: 238 Flinders Street

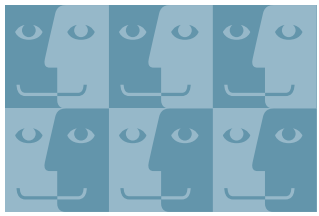
During construction of the new Town Hall Station, Flora will remain open for business. Flora is a no-frills counter-service diner serving delicious and authentic Indian cuisine. Try the local favourite Butter Chicken or grab yourself a popular small combo dish for under \$11. Open everyday until late, come in for lunch, dinner or even a late-night snack!

For more information visit [metrotunnel.vic.gov.au](http://metrotunnel.vic.gov.au)



More trains, more often





# FACES OF SOUTHBANK



GEMMA, 33, GP

Yeah absolutely, it would draw people up this way and be good for the museum and gallery.



ANGUS, 18, PIZZA GUY

Yeah absolutely. If you can get more people towards participating in art, consuming art, creating art, then that's better.



JULIAN, 26, WAITER

It would be really nice actually. Especially for me, I live very close and sometimes could be useful.



SANDEEP, 29, SANDWICH ARTIST

Yeah, it should be extended. It will be easier for us, who travel every day.



ALESSANDRA, 28, GAMES BUYER

I think it would actually be amazing and would definitely increase the foot traffic to the Arts Centre, but to Southgate as well.



ANTOINE, 30, BUSINESS OWNER

I love this idea, because I take the tram daily and it's going to be easier by making it cheaper.

## Question:

Do you think that the free tram zone should be extended by one or two stops to include the Arts and Sports Precincts?

THE MOST EXCLUSIVE ESCORT AGENCY

# Paramour

OF COLLINS STREET

- Dinner Companions
- Social Escorts
- Sensual Ladies

Follow us on twitter @paramourescort to see x3 free lingerie pics everyday to your feed!

**96546011** CBD - 5 MINUTES TO YOUR DOOR  
 たくさんの美しい女性 日本語を話します

Subscribe to our mailing list via our website and See real pictures of our ladies at paramour.com.au

Call or book at [rsvp@paramour.com.au](mailto:rsvp@paramour.com.au) MELBOURNE CBD

SWA113E

## SOUTHBANK SUDOKU

Last month's Sudoku solution

|   |   |   |   |   |   |   |   |   |
|---|---|---|---|---|---|---|---|---|
| A | S | T | N | O | K | B | H | U |
| K | U | B | A | H | T | S | N | O |
| N | H | O | U | S | B | K | A | T |
| U | A | K | H | B | O | T | S | N |
| S | O | H | K | T | N | A | U | B |
| B | T | N | S | U | A | O | K | H |
| H | B | A | T | N | S | U | O | K |
| O | K | U | B | A | H | N | T | S |
| T | N | S | O | K | U | H | B | A |

A variation of Sudoku, with the letters SOUTHBANK replacing the numbers.

The rules are the same as regular Sudoku, each line of the must contain the letters 'SOUTHBANK' as must each 9-square box. This Sudoku is MEDIUM! Good Luck!

|   |   |   |   |   |   |   |   |   |
|---|---|---|---|---|---|---|---|---|
|   |   |   |   | K |   | S |   |   |
|   | H |   | N | B |   |   | K |   |
| K |   |   | O | S |   |   |   |   |
|   |   |   |   | U |   | T | S |   |
| B | A | T | S |   | O | K | N | U |
|   | N | U |   | A |   |   |   |   |
|   |   |   |   | O | S |   |   | T |
|   | K |   |   | N | U |   | H |   |
|   |   | N |   | T |   |   |   |   |



Montague Community Alliance

# Montague – learning from others . . .

I've just been in Dubai and Athens and was really interested to see how each city is managing its inner-city development.

Of course, they are very different cities with seriously different cultures, but I could see some similarities with how we are developing in Fishermans Bend and, in particular, the Montague Precinct.

We were fortunate in Athens to have friends who live there, which enabled us to look beyond the tourist sites and briefly immerse ourselves in the local culture.

The most striking thing for us was the amount of people of all ages living right on the edges of the centre of Athens (just like Montague). Most residential buildings are a mix of old and new, built right next to each other ... literally, right next to each other. Nearly all had balconies or external areas, such as rooftop gardens, which in the early morning were full of people. I was very struck by how neighbourly people were, even though it is a late-night city with dinner being eaten mostly after 9.30pm, there was little or no noise disturbance

from neighbours. There seemed to be a tacit understanding of how to live in very close quarters with a deep respect for other's space and a real desire for peaceful co-habitation.

The residential buildings were no higher than eight storeys, most were mainly four, and that seemed to be partly why there was strong sense of community. Every block had businesses, shops, cafes and restaurants that were used by locals as well as visitors. The local community were clear about who they were, the history of their community and how to live together. They seemed to be self-regulating and highly community focused.

In Dubai, the community regulations are very clear and well-articulated. There is little or no self-regulation. It is safe and living appears to be very easy, especially for citizens and western ex-pats. Community is based on economics and social standing and is unspoken but clearly defined. There

is little or no street community activity and residential areas are either gated compounds, or high-rise up to 40 levels. Meeting your neighbours and interacting with them is based on your status or job rather than your geography. The social connection is strong but is not based around one's home.

What can we learn from these two very different cities that could assist how we develop a community life here in Montague? Having the safety and ease of life in Dubai, with the vibrant and dynamic sense of community of Athens would be the desired outcome. And with the growth of residential premises continuing a pace, with at least 25 town houses and one new residential tower completed in the next couple of months. We all need to consider how to "make" a community, how to respect each other's needs and to recognise we have community obligations to care about each other and to

create a community, not force one.

We are so fortunate to be able to create a community here in Montague, so let's do that ... please get involved with our community group. We can be contacted on the email below or through Facebook @MontaguePrecinct or Twitter @MontComAlliance.

Thank you.



**Trisha Avery**

Trisha Avery is the convener of the Montague Community Alliance.

[trishavery@bpca.com.au](mailto:trishavery@bpca.com.au)



Southbank Residents' Association

# When is a footpath wide enough?!

Now that spring has arrived, I have been walking a lot more around Southbank.

It was lovely to see the beautiful bluestone footpath in the front of Southbank's newest building - Southbank Place at 60 Kavanagh St. Although, this footpath seemed a little peculiar.

As I was making my way along Kavanagh St, suddenly I felt a little claustrophobic when the footpath changed from asphalt to the bluestone as suddenly there was very little room to pass oncoming pedestrians and navigate the typical footpath obstacles of bicycles, scooters and motorbikes. It then dawned on me that the footpath width had dropped by 50cm. The entirety of Kavanagh St has a 2.5-metre-wide footpath, except in the front of Southbank Place where it drops to two metres.

I wrote to council to ask what width it had approved and whether the developer had indeed built it to the correct width. I was surprised with its response ...

Apparently the two-metre width was approved "to protect existing street trees from tree root damage that can occur when installing a new bluestone footpath. Council added that it maximised "the green permeable grass in those areas."

I wasn't sure what to think when I received that reasoning as I can think of a number of very recent bluestone footpaths where the bluestone has gone within 30cm of the tree base. Moreover, what is the difference between asphalt and bluestone? The asphalt was previously 2.5 metres wide and the trees didn't seem to mind. Whereas, this footpath is over two metres away. We were only needing another 50cm to make it consistent with the rest of Kavanagh St. Moreover, the



The narrow footpath outside the new Southbank Place on Kavanagh St (left), compared with the wider Kavanagh St footpath located between Balston and Power streets (right).

"maximising the green permeable grass" reasoning really threw me as nearly all the grass that was planted by the developer is almost dead already, and we have just finished winter. There is no reticulation, so I guess that isn't going to assist much either. But the real confusing part with that is that council informed owners' corporations of Epic, Victoria Tower and Sentinel (88 - 118 Kavanagh St, respectively) that the nature strips on the footpath in front of their buildings wasn't conducive to grass, owing to the shade throughout most of the day. Council then replaced the grass that was there with hardy native species, which by all accounts, seem to be flourishing. So, I wonder what council officers think is so different about this section of footpath which

is going to allow the green permeable grass to grow (and without water).

I wonder if the two-metre approval was an oversight from council and now, in hindsight, it is somehow trying to justify the decision as it didn't want to admit they got it wrong.

I guess time will tell, but in the meantime, I feel for those who need to use that section of the footpath as at times it becomes really congested as a result of the reduced width combined with the scooters, motorbikes and bicycles.

Did you know that Southbank Residents' Association (SRA) is a committee of volunteers from our community? We try our best to represent the interests of our residents, but without members, our voice

is merely a whisper. If you are not currently a member of SRA, we would certainly welcome your interest. It's only \$10 per year and you can have peace-of-mind that you too are doing your bit for the community by showing your support. Please visit our website [southbankresidents.org.au](http://southbankresidents.org.au) to sign up or follow us on Facebook / [SouthbankResidents](https://www.facebook.com/SouthbankResidents)



**Tony Penna**

Tony Penna is the president of Southbank Residents' Association.

[southbankresidents.org.au](http://southbankresidents.org.au)



## Southbanker



Murray Pitman.

# An altruistic vibe

By Rhonda Dredge

Everyone is doing a performance piece down at the Malthouse Theatre, including Murray Pitman, the host of the Malthouse Kitchen.

Mostly he's playing the straight guy, looking after the many different artistes who visit on a regular basis.

He's had the gig for 11 years and sometimes he seems like the only normal person around.

"I call myself a caterer," he said. "I like to say if catering fails I can always fall back on acting."

Murray has a little cubbyhole above the kitchen where he hides sometimes at just before two, when the lunch crowd begins to fade.

But he's usually at his post behind the counter of one of Melbourne's most comforting places.

A couple of years ago they put in the long tables out the front, made out of an old pier, to take advantage of the setting.

"There were just a few tables and chairs before that," he said. They also got rid of some horrible green paneling.

Inside the mood is dark, offering a haven for students and staff from the Victorian

College of the Arts who like to discuss their latest projects.

Murray sometimes gets involved but he likes the fact that each day is different. "We don't listen to their gripes. Don't write that."

At night they're on full production for the theatre crowd, with 80-150 meals running through their kitchen in 45 minutes.

Chefs are given the opportunity to express themselves with different dishes and so are wait and kitchen staff, some of whom are in the performance industry.

Murray conceded that working seven days a week could be exhausting but he hadn't lost his sense of humour.

"I'm still waiting to be discovered," he said, or words to that effect when *Southbank Local News* commented on his heroic looks.

He doesn't really have to advertise his business. People are regulars. They sit for hours over a glass of wine, reading the papers. Even the *Sydney Morning Herald* is available.

If you are lucky you can catch the beginning of a new art movement as it is hatched up on the balcony.

When *Southbank Local News* visited a plan to turn a meeting into an artwork was being aired.

The prices are kept affordable for artists, who rarely have full-time jobs.

The Malthouse Kitchen is not a charity but it does have an altruistic vibe.

## Health &amp; Wellbeing

# Signs and symptoms of a toxic relationship

## What is a toxic relationship?

A toxic relationship (friendship, family or romantic relationship) can contaminate your self-esteem, your sense of happiness and the way you see yourself and the world.

It is mentally, emotionally or spiritually damaging and can have long lasting effects on your body and mind if not identified and if action is not taken swiftly.

Toxic relationships aren't necessarily the territory of the weak or insecure either. Strong, healthy, independent people can also find themselves in such situations. Similarly, relationships that seem strong to begin with, can leave a trail of damage on one or both parties if it becomes toxic.

## Signs you are in a toxic relationship

There are multiple symptoms of a toxic relationship, but those below are ones that I have chosen based on my work with individuals in unhealthy or toxic relationships:

### *You walk on egg shells*

Do you find yourself anxious, nervous or worried to share your opinions because you're nervous and afraid of the other's emotional reactions, or editing your thoughts to avoid upsetting them? Extended periods of time walking on eggshells may cause you to lose your authenticity and sense of self and lead to an internalising of their blame, criticism and anger.

### *The other person wants you all to themselves*

Someone wanting you to break off relationships with a partner, friends or family is a possible sign that they are trying to isolate you from your loved ones in an attempt to control and manipulate you.

### *You engage in the four horsemen of the apocalypse*

The four horsemen are: stonewalling, defensiveness, criticism and contempt. No one is perfect, and these behaviours may arise from time to time, but if your loved one is giving you the silent treatment or refusing to speak when spoken to, is defensive when you bring up something they don't agree with or when criticism is used as a channel to express contempt or disdain, be alarmed.

### *You avoid saying what you need*

We all have important needs in relationships. Some of the big ones are connection, validation, appreciation, love and affection. When those needs are mocked or ignored, it can make us feel empty, isolated, lonely or disconnected. If your attempts to talk about what you need ends in a fight, accusations, insecurity or jealousy, don't ignore it.

### *Physical or verbal abuse. Or both.*

These are deal-breakers.

### *Passive-aggressive comments or behaviour*

Passive-aggression is an indirect attack. It is subtle and often disguised as something else, such as anger disguised as indifference ("whatever" or "I'm fine") or manipulation disguised as permission ("I'll just stay at home while you go out and have fun").

### *Nothing gets resolved.*

In a toxic relationship, things don't get worked through because many conflicts end in an argument. This can lead to one person thinking that the other will not have the capacity to deal with the issue in a way that is safe and preserves the connection. When this happens, needs can get buried, and in a relationship, unmet needs feed resentment.

## What to do if you are in a toxic relationship

Stay tuned for November's article on "what to do if you are in a toxic relationship", but in the meantime ... if any of these red flags sound familiar, it's time to take some sort of action and if you feel that you're in physical danger, you need to involve the authorities. Remember: Love should never cost you your peace, joy or your happiness.



**Rajna Bogdanovic**

Clinical psychologist

[bodgdanovicrajna@gmail.com](mailto:bodgdanovicrajna@gmail.com)

## Lunch Break



**Fred tried counting the minutes until his next sip**

*Malthouse Kitchen  
Sturt Street*

Southbank Sustainability Group

# Expanding sustainability beyond Southbank

September was, indeed, a month of sustainability!

From teaching young children at The Alfred Hospital about planting and upcycling, to presenting our work to the Melbourne Awards judges (getting selected as a finalist!), we took our group's activities and influence outside our lovely suburb. And that's not to forget the spectacular Global Climate Strike on September 20.

The month started with many of us working on our Melbourne Awards interview where we were given the chance to showcase the group's work in improving Melbourne's environmental footprint to a panel of industry experts. It was a great reminder for us all that the educational work that Southbank Sustainability Group (SSG) has done over the past two to three years, as well as our entire journey, which started with 11 of us planting a few small green planters and a guerilla-style temporary garden at Boyd. Eventually we lobbied council and won a permanent vegie garden for our neighbourhood. Today we have 125 members and have created a much-needed sense of community in the process. All of which the judges responded to very positively, selecting SSG as one of only three finalists going on to win our city's highest accolade ... the Melbourne Awards 2019! This means that SSG has a great chance of winning the first ever environment category award, recognising all our volunteers' solution-focused, positive, and fun-filled environmental work over the years. The winner will be announced on November 16. Wish us luck!



As a group, we participated in the Global Climate Strike on September 20. One of our creative volunteers thought of, and executed, a great idea for a banner by repurposing discarded fabric and other materials, which we will use again for other events. 12 of us represented the group on the day, where apart from supporting students in demanding immediate climate action, we got to really enjoy ourselves. There was plenty of positive energy at the strike and so many Melburnians of all ages and all walks of life came together and united behind such an important issue that affects every single being on this planet.

On September 25, a group of our volunteers ran a children's education day at the Alfred Child Care Centre. The children learned how to upcycle something as mundane as a plastic bottle by turning it into

a beautifully decorated planter. They each chose one of three indigenous seedlings to plant in their planter, and learned how to think creatively in repurposing simple items like rocks, painting them and turning them into their personalised planter tag so they could tell their plants apart. We received very positive remarks by KU Children's Service's who helped organise this activity, sharing how much fun the children had while learning different ways of approaching sustainability.

September 28 marked our second big planting day event in the community garden. We saw a lot of new faces among the 47 Southbankers and surrounding neighbours who joined us to plant spring vegies and herbs. It was a joy meeting more neighbours seeking to interact with nature while learning how to plant seedlings. You can see

photos from the day on our Facebook page.

## What's next?

October will focus on gardening and caring for our new seedlings. We'll meet on Saturdays, October 12 and October 26 at 10am at Boyd. Come and talk sustainability initiatives, do some gardening, harvesting, and more.

Then on Saturday, November 2 at 10am, we will run a "Make your own Christmas newspaper gift bag" workshop inviting everyone to come learn how to repurpose old newspapers and turn them in beautiful gift/carry bags. Ahead of Christmas, we want to help people think differently in how they can repurpose common house materials and turn them into gift bags, Christmas cards, etc. That way, you can feel good about gift-giving in a way that doesn't add waste and reduces your gift's environmental impact. We'll be running this workshop in Boyd's Assembly Hall and it's free to join. Check our Facebook page to learn more.

**About the group:** A solutions-focused community group of Southbank residents working to bring positive change in sustainability practices and education to our neighborhood, while building a wonderful community of like-minded people. Reach us at [southbanksustainability@gmail.com](mailto:southbanksustainability@gmail.com) or [facebook.com/SouthbankSustainabilityGroup](https://www.facebook.com/SouthbankSustainabilityGroup)



**Artemis Pattichi**

Southbank Sustainability Group  
[southbanksustainability@gmail.com](mailto:southbanksustainability@gmail.com)

## History

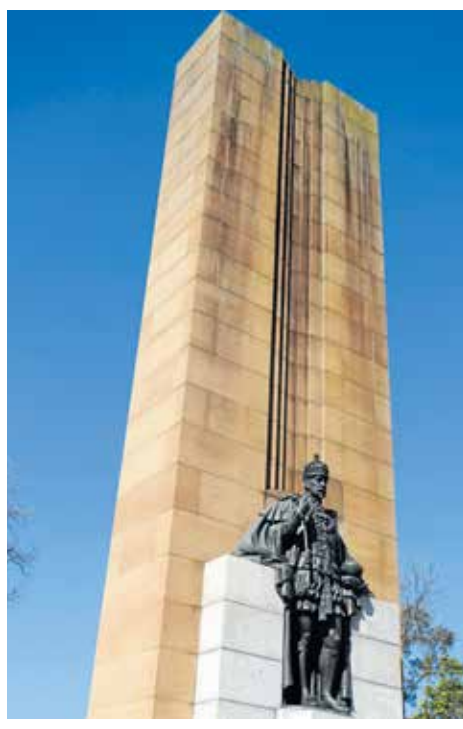
# Southbank's sculptures

Southbank is graced with some wonderful sculptures, both historic and modern.

They depict abstract forms as well as those dedicated to prominent members of the military (such as Sir John Monash) and members of the royal family, such as King George V. He died in 1936 of lung disease (he had been a heavy smoker and ill for some time) and monuments were dedicated to him across the British Empire.

The King George V statue is located on the western approach to the Sidney Myer Music Bowl. It was one of a number commissioned by Melbourne City Council in Kings Domain and in across the Yarra in Fitzroy Gardens, as part of a drive to replace a series of crumbling concrete and plaster statues dating from the 1860s with modern works. (On one night in 1934, council officers removed 60 of these statues!)

The King George V statue is a striking piece of work, produced by the prominent sculptor Bill Bowles. Born in Sydney in 1885, he studied at Brisbane Technical College and then at the London School of Sculpture. After serving in the Tank Corps in World War One, he worked and studied in London



The King George V statue.

post-war, before marrying and returning to Australia in 1924 where he worked at the Australian War Memorial in Canberra, becoming head sculptor.

After relocating to Melbourne in 1931 he produced a number of outstanding sculptures and friezes. Bowles won the commission to provide a homage to the late King, based on his ability to subject the sculptural elements of large monuments to an overall architectural design. Here we see this demonstrated in the bronze statue where a conventional representation of the King is included within a set of twin simplified stone columns, intended to represent the bonds of Empire and which display the variations in the colouring of the stone. The overall effect was noted by newspapers in 1937 as displaying simplicity and being most unassuming, like the late King, and without any "freakishness or the grotesque." By placing the sculpture within the base of the columns, instead of the conventional placement on a pedestal, Bowles reduced the work to essentials

and was able to reflect the spirit of the 20th century, with the architectural design striking a new note in the Domain.

When a journalist from the *Sun News Pictorial* magazine visited Bowles' studio in a tin shed in Prahran in 1938, he encountered "a genial, smiling man, besmoked and wearing a beret." Later that year Bowles established a home and studio in Frankston, however, he suffered from ill-health and died at home from coronary vascular disease in 1954. But, what a wonderful sculptural legacy he left behind in Melbourne's streets and gardens.



**Robin Grow**

President - Australian Art Deco and Modernism Society  
[robingrow@ozemail.com.au](mailto:robingrow@ozemail.com.au)

# Neighbourhood Watch for vertical villages

With our high-rise precincts already well monitored, do our vertical villages need more watching?

Following the 2017 Bourke St incident, the state government expanded its CCTV network, bringing to 65 the number of CCTV surveillance cameras installed throughout the city.

These cameras feed into the City of Melbourne's Safe City network and are scrutinised by a 24-hour monitoring hub which notify police of incidents as they occur. The stated purpose of these cameras is to help create a safer environment and reduce crime levels by deterring potential offenders and assisting crime detection.

And perhaps we should feel even more safe now as data from such CCTV networks can be correlated with our Victorian driver's licences - as these have recently been uploaded to a national facial recognition database. While previously the state government had concerns about civil liberties and privacy, we are assured that the data will only be available to state-based agencies - initially VicRoads and Victoria Police. Use by federal authorities and other states, we are told, will not be authorised until the state government is satisfied with the proposed Identity-matching services Bill which is currently before federal parliament.

Continuing this concern for our safety,

suppliers of security services to high-rise residential buildings are also advocating a move away from our traditional "human intervened" security services and a move towards technology such as facial recognition. They suggest we begin by focusing on the many non-residents who regularly seek access to our vertical villages, such as contractors, suppliers, visitors, etc. A key selling point is that such facial technology can identify known criminals (but only if there is access to a relevant identify database methinks!).

The next step then is to apply this technology to residents. The argument here is that many of us are already comfortable with using our thumbprint to access our mobile devices - so why not for our front doors? It would make losing your keys harder to do! One option is to have separate entrances. For example, the main entrance could be equipped with biometric identification for use by residents, allowing entry at will. A separate entrance with different security measures would then operate for others seeking access - such as food deliverers who would be required to remove their helmet before entering.

## But does this make us - or make us feel - safer?

Not necessarily, according to Bambi Gordon, CEO of Neighbourhood Watch (NW).

Bambi believes that safety - and our feelings of being safe - emanate more from our sense of connectedness with both whom and where we live.

This means that feeling connected - belonging - manifest differently for different groups in different contexts and will likely change over time.

For example, the city of Ballarat has a long-established NW group but these days, some members are less physically active. While appreciating a preference for aging-in-place, the local NW group has altered its approach to include regular phone chats to their less active members.

This suits the people involved and strengthens feelings of being connected.

Bambi also sees something different emerging for us vertical villagers.

In a sector criticised for lacking a sense of community and where diversity is the order of the day, the challenge here is to craft ways of connecting that suits our various lifestyles

and is not seen as intrusive.

This is where Safety Alliance Victoria (SAV) comes into play. This a collaboration between NW, Crime Stoppers Victoria, Federation University, RACV and Victoria Police - and has the aim of creating pilot programs to reduce residential burglary and motor vehicle crime. And one pilot program will look at how real connections and a sense of neighbourhood can be nurtured in high-rise, high-density residences. This program will encompass surveys of residents in selected buildings to establish how safe they feel in their space and how much connection they have to their neighbours. Initiatives will then be trialled, such as improved signage, safe storage, information sessions and ways of noting suspicious behaviour.

This pilot is likely to happen in mid to late 2020 - so until then, stay safe!



**Janette Corcoran**  
Apartment living expert  
[facebook.com/SkyPadLiving/](https://www.facebook.com/SkyPadLiving/)

SWA113E

*Top Class*  
of Collins Street

Follow us on twitter  
[@paramourescort](https://twitter.com/paramourescort)  
for FREE lingerie pics  
everyday to your feed!

たくさんの美しい女性  
日本語を話します

Open 24/7  
Sexy and Wild  
Genuine Escorts

[www.topclassofcollinsstreet.com.au](http://www.topclassofcollinsstreet.com.au)  
**(03) 96546351**  
View lingerie pics of our REAL ladies  
[paramour.com.au/escorts/melbourne\\_escorts/gallery.html](http://paramour.com.au/escorts/melbourne_escorts/gallery.html)

## Pet's Corner



## Ballet poodle survives snip

By Edward McLeish

73-year-old Elayne Cherry is a Southbank resident, ballet teacher and mother of Gorgeous George, or "GG" for short.

Gorgeous George is a black toy poodle and he's nearly six months old.

His shaggy hair is a little longer than usual, and Elayne said it's only because he had recently had the snip.

"It's been no trouble at all - I don't think he even noticed," Elayne said.

"It hasn't slowed him down at all and he still chews through quite a bit."

Elayne said GG's favourite place to walk in Southbank was by the river, but what he went "absolutely berserk for" was the beach.

"He loves the sand, anything related to dirt, anything that makes him grubby," Elayne said.

According to Elayne, Gorgeous George also loves classical music and sitting on the sidelines at her ballet lessons.

"I used to take him to class, and he would sit there and watch the kids," she said.

"He loves it."

We Live Here

# Owners' corporation bill

The long-awaited Owners' Corporation (OC) Amendment Bill has been introduced into parliament.

The most significant change, and one we had been advocating for, is the creation of tiers of OC relating to the size of the development. The *OC Act 2006* failed to distinguish between small and large developments, but now five tiers have been created with Tier One developments of less than 100 occupiable lots down to Tier Five a two-lot subdivision or a services-only OC.

While the roll of the developer at handover and financial governance has been addressed, disappointingly the bill still has no new remedies for the thousands of Victorian apartment owners saddled with patently unfair building management and facilities management contracts, with multi-generational tenures of 25 to 99 years. This rort must not be allowed to continue and we call on the state government to urgently introduce constraints on every type of contract. All contracts must be limited to a reasonable maximum number of years.

Another egregiously unfair clause that sneaked in is the "get out of jail" card for short-stay apartment owners. All an owner needs to do to get off scot-free is to give an overnight guest a copy of the OC rules and, just like magic, the owner is not liable for any breach committed by a short-stay guest! The entire Division 1A on short-stays is a travesty that strips residents of reasonable rights.

## Lord Mayor plans community forum

We Live Here met with Lord Mayor Sally Capp recently to discuss two of the most pressing issues affecting apartment residents - cladding and short-term rentals.

On the combustible cladding issue, we had the opportunity to talk about the inconsistent information emanating from council, the Victorian Building Authority (VBA) and various experts.

The Lord Mayor said the City of Melbourne would organise a community forum, to allow council to provide accurate and up-to-date information. We welcome the forum proposal and we are certain it will be a very well-attended event.

We were also encouraged by the Lord Mayor's acknowledgement that there needs to be proper regulation of the short-stay industry so there is a level playing field for all. At present, OCs have to bear the cost of increased wear and tear on their buildings caused primarily by commercial short-stay operations.

## Government cladding fund will help "up to 40 buildings"

In last month's column, we estimated 30 buildings could benefit from the government's belated largesse.

However, information from the Victorian Treasury has revealed that the state government plans to help fund the removal of flammable cladding on "up to 40 buildings".

The other 800-plus Victorian apartment buildings identified as having cladding that is a risk to life, will presumably not get any funding assistance at all.

The list of apartment buildings to be denied assistance includes more than 30 that are classified as posing an extreme risk to life and more than 400 classified as high-risk.

The state government's May budget figures show that it had estimated that cladding-affected buildings would need an average of \$11 million each for rectification works.

On June 16, the government pledged \$300 million of state funds to address the cladding issue, following the release of the

Cladding Taskforce June report. Of that \$300 million, just over \$165 million was officially earmarked in the May budget for state government-owned buildings such as hospitals and schools.

This leaves less than \$135 million to help at-risk apartment buildings.

Premier Andrews' request for another \$300 million from the Commonwealth was immediately rejected both by Treasurer Josh Frydenberg and Federal Minister for Industry, Science and Technology Karen Andrews.

To make up the shortfall, the state government announced an increase in a levy on building permits for projects with works over \$800,000.

If the government hopes to raise about \$2000 extra per average apartment lot, it could take a very long time to raise \$300 million. Let's work it out: A new apartment project with 100 lots might raise \$200,000 in additional levies - so Victoria will need 150 new such projects approved, starting now, for the requisite funds to roll in. According to building figures available at City of Melbourne's open data platform, around 25 such projects will be completed in 2019. Even at that rate, which has been abating, it would take up to six years to raise the cash needed.

When or if the additional money is raised, the fund is supposed to total around \$435 million. Based on Treasury estimates, that's enough to help only about 40 buildings of the 1069 identified as having dangerous cladding.

About 32 extreme-risk buildings, 409 high-risk buildings and 388 moderate-risk buildings will not receive any assistance.

Using the Treasury budget estimates as a basis, the cost of fixing all 1069 affected apartment buildings could exceed \$12 billion. Whether the government eventually contributes \$400 million, which seems exceedingly unlikely, the contribution

will be less than 5 per cent of what it will cost Victorians living in dangerously clad buildings.

## While Melbourne burns ...

In June, Daniel Andrews was reported as wanting a "national partnership" on combustible cladding and for the issue be "put on the Council of Australian Governments (COAG) agenda" at its August meeting in Cairns.

While a "national partnership" seemed to be a euphemism for mendacity - to beg alms from Canberra - our interest was piqued by the prospect of having all the Premiers confer on the cladding issue at the 47th COAG meeting.

How did it work out? Well, COAG's tropical August meeting came and went and the cladding issue was not a hot topic. Cladding does not appear to have been a COAG topic at all, not rating a mention in the official "Communiqué", the quaintly aggrandised moniker of the post-COAG media release. It is disappointing because the COAG meeting was claimed to be about "improving the lives of all Australians" - apparently with the exception of those living in dangerously-clad apartments.

Did Premier Andrews simply forget to raise the combustible cladding issue at the Cairns conflagration? A subequatorial climate and its attendant refreshments could be distracting but surely our Premier's minders could have remembered to slot in the cladding issue, ad hoc, under "business arising".

What's happening while Melbourne burns? Is Nero fiddling?



welivehere.net  
emails to [campaign@welivehere.net](mailto:campaign@welivehere.net)

## Letters to the Editor

### Promenade cycling

I applaud the council's intention to overhaul the Yarra River Promenade. These big infrastructure projects take time, we all understand that.

The council's own speed study has proven conclusively that 95 per cent of cyclists are traveling at speeds in excess of the 10km/h limit.

This is of no surprise to residents of the area, as we have to dodge a bullet every time we transit the promenade at peak hour. I'd suggest from my own observations that a large percentage of that number are doing so in a totally reckless (and often times abusive) manner at speeds two to three times the limit.

A fatality before the coroner last month highlighted the real-world consequences of high-speed collisions between cyclists and pedestrians.

As such I am surprised and disappointed that the law is being breached so blatantly and so dangerously, that there is no mention of enforcement. Especially as it is acknowledged by all that the changes mooted will take years to be fully

implemented. We simply cannot wait that long for a solution to what is a critical safety issue.

The council and the police don't need to wait for any more studies or master plans to be modelled or implemented. The laws exist. What is missing is enforcement.

*James Hardy*  
Freshwater Place

### Support for cycling barriers

As an elderly Southbank resident, I was very happy to see the yellow barriers installed on the Hamer Hall ramp. I have approached this ramp with trepidation due to cyclists speeding up and down the ramp and have been abused and sworn at for suggesting the cyclist should dismount. Please keep the barriers.

And install barriers on the Evan Walker Bridge where speeding cyclists remain a problem.

Thanks,  
*Roderick*

### New tram to Fishermans

I read this article ["New tram push for Fishermans Bend" - edition 89] with interest. As a long-term resident of Ingles St, I am intrigued as to whether the group that thought up this tram upgrade had any idea that Ingles St is one of the major OD (over dimensional) routes for oversized transport, part of a series of specialised routes across Melbourne. I have enjoyed watching items such as the roof sections for Marvel Stadium and some of the largest loads ever moved by road in Australia travel slowly past my house in the dead of night. As it is, the existing Ingles St tram crossing has to be managed carefully to get these loads through safely. The crossing has been remade several times to lower the height of the tram crossing to make transit of such massive loads easier. Most of the trees on Ingles St are "pruned" as the high loads come through. This would surely mean no tram could possibly be routed along any section of Ingles St without a major re-organisation of Victoria's transport routes.

*Andrea Ellis*  
Ingles St, Port Melbourne

### A fine publication!

Greetings - first I'd like to acknowledge how we appreciate the *Southbank Local News*. It's a mine of information regarding local happenings, and we appreciate the work that's gone into it.

My query concerns your publication date. I constantly find that, by the time I see a copy, many of the events have passed. I live at Southgate Avenue, Southbank, but usually come across the new edition at Southgate Medical Centre, or La Camera, or another spot along Southbank Promenade. If you could tell me when the publication is routinely delivered to this area, I'll look out for it at the earliest opportunity. Congratulations on the publication you produce!

*Mel Sutherland*



Send your letters to [news@southbanklocalnews.com.au](mailto:news@southbanklocalnews.com.au)

# WHAT'S ON COMMUNITY CALENDAR

JAN | FEB | MAR | APR | MAY | JUN | JUL | AUG | SEP | **OCT** | NOV | DEC |



### INNER MELBOURNE LIFE ACTIVITIES CLUB

Meeting on selected dates and various locations, IMLAC takes in the city's parks, its culture, fabulous eating options as well as festivals, galleries and concerts.

[www.life.org.au/implac](http://www.life.org.au/implac) or call Dianne 0425 140 981



### WEDNESDAYS @ BOYD

#### LIFT ME UP

Looking for friends to chat with about mental health? Get peer support every Wednesday at LiftMeUpAustralia. Be listened to, accompanied and connected.

[liftmeup.org.au](http://liftmeup.org.au)

**TUESDAYS - THURSDAYS & SATURDAYS**  
**CHUNKY MOVE DANCE CLASS**  
Mondays to Thursdays and Saturdays at 111 Sturt St. Chunky Move dance classes are the perfect way to unwind, get fit and improve flexibility and strength.  
[chunkymove.com](http://chunkymove.com)



**TUESDAYS**  
**LAUGHTER YOGA @ BOYD**  
Laughter Yoga is a unique concept that allows you to laugh even when you least feel like it and is ideal for all ages. Sessions are at Boyd Community Hub, Assembly Hall each Tuesday at 6pm.



### FIRST AND THIRD SATURDAY EACH MONTH

#### SUSTAINABILITY GROUP

A growing group of green and sustainability enthusiasts who live in Southbank looking to bring positive change. More info: [facebook.com/SouthbankSustainabilityGroup](https://www.facebook.com/SouthbankSustainabilityGroup)



### FIRST AND THIRD THURSDAY @ BOYD

#### TEAHOUSE TOASTMASTERS

Want to take your public speaking to a higher level or improve your English and make some local connections? Join us on the first and third Thursday every month.

Enquiries: [jvanselow@gmail.com](mailto:jvanselow@gmail.com)

**SATURDAYS 8AM @ BOYD**  
**YOGA WITH MELIA**  
Warm up your weekend with a class of Yoga with Melia! Improve your strength, flexibility and mental clarity. All levels welcome, bookings essential.  
[info@yogawithmelias.com.au](mailto:info@yogawithmelias.com.au)



### MONDAYS 1.30PM TO 3PM @ BOYD

#### MATERNAL & CHILD HEALTH

A free drop-in service available for families that need additional support between appointments. The sessions run in the Maternal and Child Health area at Boyd. No appointments necessary.



### FRIDAYS 7.45AM - 9AM @ BOYD

#### COMMUNITY TAI CHI

WULONG TAI CHI offers you the opportunity to enhance your strength, balance, flexibility and well-being in a friendly, supportive environment. All welcome. [lily@wulongtaichi.com.au](mailto:lily@wulongtaichi.com.au)



### SUNDAYS

#### ARTS CENTRE MARKET

Meet over 80 of Victoria's finest artisans first hand. Discover how these unique artworks are made, chat directly about the products, inspirations and techniques.

[artscentremelbourne.com.au](http://artscentremelbourne.com.au)

**WEDNESDAYS @ BOYD**  
**FREE WALKING GROUP**  
Join local fitness experts JustInTime as they lead a "not just walking group" for Boyd walkers. The program runs on Wednesdays from 9.30am to 10.30am.



**77 - 83 CITY ROAD, SOUTHBANK**  
**ONE ROOF**  
A community, a home and an entire ecosystem providing everything a female entrepreneur needs to thrive under one roof. Find out what's on: [melbourne.oneroofwomen.com/new-events](http://melbourne.oneroofwomen.com/new-events)



**OCT 12 & NOV 9 - BOTANIC GARDENS**  
**BUSH FOOD EXPERIENCE**  
Follow your taste buds through the edible highlights and sample native bush foods at their finest with canapés prepared by trainee chefs from Charcoal Lane.  
[rbg.vic.gov.au](http://rbg.vic.gov.au)

### TUESDAYS SOUTHBANK ROTARY

Rotary Club of Southbank meets weekly for dinner on most Tuesday evenings throughout the year at Belgian Beer Cafe at Riverside Quay. Visitors welcome.

[southbank.org.au](http://southbank.org.au)

### MONDAYS @ BOYD JUSTICE OF THE PEACE

Local Southbank JP Atila Akguner offers two hour sessions every Monday morning from 11am until 1pm at the Principal's Office at Boyd. To book in a time contact:

[atilaakguner@gmail.com](mailto:atilaakguner@gmail.com)

### FIRST THURSDAY OF EACH MONTH SUNRISE PROBUS CLUB

Over 50, living in Southbank and want to join our vibrant club for activities, events and friendship? Meet at Library at the Dock at 10am. Contact Verna on 0407 065 910. [MSPC.docklands@gmail.com](mailto:MSPC.docklands@gmail.com)

# BUSINESS DIRECTORY

## ATTRACTIONS

Open Daily from 10am  
eurekaskydeck.com.au

**eureka skydeck**

## BROTHEL

**Studio 466**

美女如雲

466 City Road  
South Melbourne

03 9696 4666  
OPEN 7 DAYS

## CHURCH

**St Johns**  
Southgate

20 City Road Southbank  
Telephone 9682 4995  
www.stjohnssouthgate.com.au

## ESCORTS

**Erica Elderly** 96503295

Mature  
Sophisticated  
Affectionate  
Discreet  
Genuine  
Affordable Escorts  
paramour.com.au

5 mins to your door!

www.paramour.com.au SWA113E

**(03)9654 6011**

Melbourne's Finest Escorts can be at your door in 5min as we're located in the CBD

Paramour

## ENTERTAINMENT

MELBOURNE  
RECITAL  
CENTRE

TO BOOK: 9699 3333  
melbournerecital.com.au

CNR SOUTHBANK BLVD &  
STURT ST, SOUTHBANK

#melbrecital

## FUNCTIONS

**St Johns**  
Southgate

Facilities hire Beautiful venue for weddings and memorial services  
Concert venue with excellent acoustic and comfortable seating Spacious function room Meeting rooms Kitchen

20 City Road Southbank  
Telephone 9682 4995  
www.stjohnssouthgate.com.au

## GYM

**JUSTINTIME**  
PERSONAL TRAINING

University degree qualified trainers that come to your apartment gym!

Justin Moran  
0411 798 934 justintimept.com

## HEALTH



**OSTEO STRONG**

OsteoStrong South Melbourne  
378 Clarendon St, South Melbourne  
P: 7004 1284  
E: sthmelb@osteoststrong.com.au

## MARKET



*Explore the Market*

**SOUTH MELBOURNE MARKET**  
Corner of Coventry & Cecil Streets, South Melbourne

## LIQUOR STORE

**ACT OF WINE**

Honest wine, craft beer, artisan spirits  
22 Fanning Street SOUTHBANK  
Open 7 Days  
www.actofwine.com.au

## PHOTOGRAPHY

**PHOTOGRAPHY STUDIES COLLEGE**

MASTERS | DEGREES | DIPLOMAS  
CERTIFICATES | SHORT COURSES

Find Out More

PSC.EDU.AU + 61 3 9682 3191  
info@psc.edu.au | 65 City Road, Southbank VIC 3006

## PHYSIOTHERAPY

**Elite Sports Physiotherapy**

Sports & Spinal Physiotherapy  
Remedial Massage  
Clinical Pilates  
Post-Surgical Rehabilitation  
Free Injury Assessments  
WorkCover/TAC Claims



Mezzanine Level, 13-15/1 Freshwater Place, Southbank  
PHONE: 8640 0328 WEB: www.elitesportsphysio.com.au

## REAL ESTATE

**CENTRAL EQUITY**

AWARD-WINNING MELBOURNE DEVELOPER

**1800 63 8888**

southbankplace.com.au

**CityResidential** REAL ESTATE PTY LTD  
T: 03 9001 1333  
818 Bourke Street, Docklands VIC 3008

**SALES** Glenn Donnelly m: 0419 998 235

**LEASING** Lina D'Ambrosio m: 0430 929 851

www.cityresidentialbourkestreet.com.au

**SELLING | LEASING | PROPERTY MANAGEMENT**

**FIFTEEN85**

SOUTH MELBOURNE

www.fifteen85.com.au

**LUCAS**

WE KNOW VERTICAL LIVING  
BETTER THAN ANYONE.  
THAT'S YOUR ADVANTAGE.

9091 1400 | lucasre.com.au

**MELBOURNE SQUARE**



THE LARGEST TERRACES IN MELBOURNE

TO BOOK AN APPOINTMENT CALL 1300 888 770 OR  
DISCOVER A TERRACE STORY AT MELBSQUARE.COM.AU

**RayWhite**

Ray White Southbank | Port Phillip  
111 Clarendon Street, Southbank 3006  
P: (03) 8102 0200  
www.raywhitesouthbank.com.au

**SOUTHBANK RESIDENTIAL**

Specialists in Southbank Apartments

www.southbankresidential.com.au

Phone: **964 50 800**

**THE EVERMORE**

MELBOURNE

Retreat Everyday  
call 1300 383 766  
Display suite & apartment available to view, contact us for further information  
www.theevermore.com.au

## TAXI

**Crown Cabs Taxi Service**

Bookings: 1300 12 13 14  
Download the App for your next Ride!

**Whittles**

Owners Corporation Management Services



For superior owners corporation management services, contact the Docklands dedicated team  
Whittles, Level 1, 838 Collins Street, Docklands VIC 3008  
T 03 8632 3300 E info.docklands@whittles.com.au

## RENOVATION

**AROM** APARTMENT RENOVATIONS OF MELBOURNE

1300 96 86 07  
edgar@arom.com.au  
www.arom.com.au

## RESTAURANT

**DOWNSTAIRS**  
— BISTRO & LOUNGE —  
215-217 Sturt Street Southbank Victoria  
**9686 5015**  
WWW.DOWNSTAIRS.NET.AU

**ENA**  
Shop M4/9 Mid Level Southgate Complex 28  
Southgate Ave, Southbank  
Ph: 9690 6205  
Menu: enagreekstreetfood.com.au

**THE LANGHAM**  
MELBOURNE  
The Langham, Melbourne 1 Southgate Avenue, Southbank, VIC 3006 Australia  
T 1800 641 107 melbarestaurant.com.au

## SCHOOLS

www.haileybury.vic.edu.au

**HAILEYBURY**  
KEYBOROUGH BRIGHTON BERNICKEY CITY BEILING

## SERVICES

**Stop Noise**  
ADD ON DOUBLE GLAZING  
NOISE REDUCTION SPECIALISTS  
1800 880 844  
INFO@STOPNOISE.COM.AU  
WWW.STOPNOISE.COM.AU

# 16th October In Room Auction

RayWhite

## The National Apartment Collective Event

Wednesday 16 October at 6:30pm

Join us at 111 Clarendon Street, Southbank (our office)

For further information please visit our website [raywhitesouthbank.com.au](http://raywhitesouthbank.com.au) or call 8102 0200



[raywhitesouthbank.com.au](http://raywhitesouthbank.com.au)

# Experience Award Winning Service

RayWhite



### Awards received:

1. Elite Business Leader - Andrew Salvo
2. Top Offices Settled Commission - No. 9
3. Sales Rising Star of the Year - Austen Kosasih
4. Elite status for Property Management Services
5. Elite status for Property Management Growth

Ray White Southbank | Port Phillip

8102 0200

[southbank.vic@raywhite.com](mailto:southbank.vic@raywhite.com)

[raywhitesouthbank.com.au](http://raywhitesouthbank.com.au)

PROPERTY  
MANAGEMENT  
A RAYWHITE  
2018 2019