

SOUTHBANK NEWS

southbanklocalnews.com.au

Forever Free

Puzzles & Trivia P25



Southbank Boulevard reaches an end, but new playground splits opinion

The long-awaited \$44 million transformation of Southbank Boulevard has been completed, but it was the final piece of the project – a “risky” playground – that got people talking.

WORDS BY *Brendan Rees*
 PHOTOGRAPHY BY *Ajay Viswanath*
 COUNCIL AFFAIRS

The park, which consists of “nature inspired” play equipment including climbable bluestone boulders perched on dollies, fake pavers, and a slide that gives the illusion of it being held down by a rope, was launched on November 7 at the corner of Southbank Boulevard and Kavanagh St.

City of Melbourne Lord Mayor Sally Capp assured the park was safe and designed by installation artist

Mike Hewson to be an “imaginative playground” so it could build resilience within children – a different approach she said “we should embrace”.

“Risk play parks are proven to enhance children’s development and offer an alternative to the simple plastic playgrounds seen elsewhere,” she said.

“All the play pieces, including the trolleys and boulders, are firmly fixed into the ground. Rigorous testing has been undertaken in consultation with child safety experts to ensure the playground is safe for everyone.”

Continued on page 3.



ARTIST'S IMPRESSION

RIVERSIDE RARITY



TIMELESS LUXURY

TRIELLE

by mirvac

SOON TO DEBUT AT YARRA'S EDGE

TRIELLE.MIRVAC.COM



RIVERSIDE RARITY



TIMELESS LUXURY

A CAPTIVATING CONFLUENCE OF CITY, RIVER AND SKY.

Trace a line from the Paris End of Collins Street to the water's edge at Marina YE and discover Trielle. Rising 45 levels, this sparkling landmark will soon make a triumphant debut on Melbourne's skyline, poised to redefine luxury living.

Designed to celebrate life's most precious commodity, time, Trielle honours, treasures and enriches every moment. With a focus on health and wellness, Trielle's deeply considered and beautifully articulated service and amenity offering exists to help residents maximise every day and life at large.

Eminently warm, welcoming and opulent, Trielle is life by the water, elevated beyond imagination.

Trielle features one, two, three and four-bedroom residences, a limited collection of sub-penthouses, and is crowned by the Black and White Diamond Penthouses.

TRIELLE.MIRVAC.COM



ARTIST'S IMPRESSION



SOUTHBANK NEWS

southbanklocalnews.com.au

Forever Free

Puzzles & Trivia P25



Student engage with cutting-edge tech in Fishermans Bend

From robotics to virtual reality and 3D printing, Year 7 students from Port Melbourne Secondary College have received the ultimate hands-on lesson when it comes to cutting-edge technology after taking part in the Australian Manufacturing Innovation Showcase at The Timber Yard. Photo credit: Innovative Manufacturing Innovation Showcase Centre. *Full story on page 11.*

Labor pledges \$1.5 million for a new pocket park outside ACCA

WORDS BY *Jemma van Zaanen & Sean Car*
PLANNING

A re-elected Andrews' Labor Government will provide a \$1.5-million grant to the City of Melbourne to support the development of a new green space and dog park near the Australian Centre for Contemporary Art (ACCA) in Southbank.

Labor's candidate for Albert Park Nina Taylor – who replaces long-time sitting member Martin Foley – made the announcement on October 27 alongside Minister for Environment and Climate Action Lily D'Ambrosio and Deputy Lord Mayor Nicholas Reece.

Also in attendance were ACCA's CEO Max Delaney, Labor's candidate for Southern Metropolitan Ryan Batchelor and representatives from local residents' group Southbank3006, which has been advocating for the park.

Responding to growing concerns around a lack of open space in Southbank, Ms Taylor said the pocket park would transform a "desolate wasteland of granitic sand" at the corner of Grant and Sturt streets into new green space for "local families to enjoy all year round".

"Open green spaces are so important for keeping healthy, active, and having a place to socialise," Ms Taylor said. "We know that land is sparse in the inner-city and so

Continued on page 2.

Could this pocket of Southbank decide a knife-edge election seat?

WORDS BY *David Schout*
ELECTIONS

Around 4000 Southbankers will vote in the seat of Prahran for the first time this Victorian Election, and the cohort is likely to have a huge say in who takes the knife-edge seat.

Changes to electoral boundaries in late 2021 saw an eastern pocket of Southbank move from the seat of Albert Park (where all other Southbankers will vote on November 26) to the Prahran electorate.

The seat is tipped to be a tight contest between incumbent Greens MP Sam Hibbins and Labor challenger Wesa Chau.

It has been held by Mr Hibbins since the 2014 election when he, alongside fellow Greens member Ellen Sandell in the neighbouring seat of Melbourne, won the first ever seats for the party in the Victorian lower house.

Other candidates for the seat are Matthew Lucas (Liberal) and Alice Le Huray (Animal Justice Party).

In both 2014 and in 2018 when Mr Hibbins was re-elected in Prahran, the Greens came third in primary votes.

Preferences from minor candidates saw them leapfrog Labor, before Labor preferences saw them pip the Liberals on both occasions.

This time, however, Labor is considered a real hope of snatching back a seat that it last held in 2010.

Changes to the electoral boundaries – which are altered to reflect population shifts across the state and to ensure all electorates are "approximately equal" – will see locals who reside to the east of Sturt St (but south of Grant St) vote in the Greens-held seat.

The state's smallest electorate, Prahran takes in South Yarra, Prahran, Windsor and parts of St Kilda and St Kilda East, plus the new



▲ A electoral boundary change meant the seat of Prahran (red line) now takes in Southbank Village.

pocket of Southbank.

Ahead of an expected tight race, Mr Hibbins said he had spoken with locals throughout the campaign.

"I've been campaigning in Southbank, including door-knocking and speaking with residents. I'm committed to improving the liveability of Southbank, with reduced traffic and increased open space and greenery," he told *Southbank News*.

"With parts of Southbank now in the Prahran electorate, residents have the opportunity to re-elect a Greens MP who will be in the heart of parliament, holding the next government to account and pushing them further and faster on climate action and housing affordability."

The Victorian Greens hold three of 88 seats in the Victorian Legislative Assembly – Mr Hibbins, Melbourne MP Ms Sandell, and Member for Brunswick Tim Read – in addition to leader and Northern Metropolitan MP Samantha Ratnam in the upper house.

For Labor, Ms Chau is no stranger to elections, having previously contested the federal seat of Higgins for the party back in 2013.

She also ran as the Deputy Lord Mayor candidate alongside Labor veteran Phil Reed at the 2020 City of Melbourne election.

Continued on page 3.

ELECTIONS, PAGE 05

A Candidates talk Southbank



SAFETY & SECURITY, PAGE 07

B New zebra crossings for Balston and Kavanagh



BUSINESS, PAGE 09

C South Melbourne Market bouncing back



ARTS & CULTURE, PAGE 11

D Macfarlane Fund celebrated



Michael Pastrikos Georgina Zeneldin Tommy-Lee Davies Andrew Salvo Max Hui Lilian Kwan Trent Bonnici Georgia Ackroyd Austen Kosasih

Buy, Sell, Rent

Speak to our team today

P: 8102 0200 | W: raywhitesouthbank.com.au

RayWhite

HYPERLOCAL NEWS

CONTACT
 Suite 108, 198 Harbour Esplanade
 Docklands 3008
 southbanklocalnews.com.au
 Tel: 8689 7980

EDITOR
 Sean Car

PUBLISHER
 Hyperlocal News Pty Ltd
 ABN: 57 623 558 725

ADVERTISING
 Hyper-local print works for advertisers in our digital world because local people are interested in local news. To sell to the Southbank community, contact Jack Hayes on 0401 031 236 or jack@hyperlocalnews.com.au

Reader contributions are welcome. Send letters, articles and images to: brendan@hyperlocalnews.com.au

The deadline for the December/January edition is December 2.

SOCIAL MEDIA
 Follow us on Twitter @SOUTHBANK_News

Like us on Facebook Southbank Local News

Follow us on Instagram @southbanklocalnews

Opinions expressed by contributors are not necessarily shared by the publisher.

hyperlocalnews.com.au
 admin@hyperlocalnews.com.au



Labor pledges \$1.5 million for a new pocket park outside ACCA

Continued from page 1.

delivering this new park will be a great asset to locals and the community.”

“This open space will create local jobs while it’s being built, boost surrounding local businesses and provide social, health and wellbeing benefits for families for years to come.”

Minister D’Ambrosio said Labor would deliver the project as part of its Suburban Parks Program, which had already created up to “6500 hectares of new parkland, walking trails, bike trails, pocket parks and dog parks” across Victoria.

“Our parks and gardens are what makes Melbourne one of the most liveable cities in the world – we’re building on that by delivering more parks that are enjoyable and accessible for everyone,” Minister D’Ambrosio said.

With Southbank currently sitting at around two sqm of open space per individual, well below the World Health Organisation’s recommended minimum of nine sqm, the City of Melbourne has prioritised more green space in the area as was one of its “highest priorities”.

Deputy Lord Mayor Nicholas Reece told *Southbank News* that the council had been looking at every opportunity available and was being “as creative as possible” in developing green space for Southbank.

“The plan is to convert the granitic sand wasteland and turn it into a green space which will be a magnet for people who are looking to congregate, chill out or have a picnic in green space,” Cr Reece said.

“It’s been terrific working with local residents on this opportunity and they have told us loud and clear that they want new, open green space that they can utilise.”

Cr Reece said the City of Melbourne “looks forward” to this proposed investment being delivered should Labor be re-elected at November’s state election.

Earlier this year, Southbank residents’ group Southbank3006 proposed a dog park and green space for the ACCA forecourt area and has since been central to lobbying relevant stakeholders



on the idea.

The group’s president David Hamilton said it was “delighted” to see its efforts rewarded, adding that the project would add more green space than what had been delivered as part of the council’s linear park at Southbank Boulevard.

“When this becomes green space, it will add a significant pocket park accessible to all residents from Kavanagh St precinct to the Arts Precinct to Southbank Village,” Mr Hamilton said. “The size of this space will enable a variety of uses from an off-leash dog park to a space for families.”

With the council having included \$25 million over four years in its most recent budget to identify and secure new open spaces in Southbank, Mr Hamilton said he hoped this proposal would be the first of more to come under a “low traffic neighbourhood” model.

“It is our vision, and we know it is one shared

by councillors, that the solution to open space in Southbank is to think creatively and not be locked into expensive land acquisition schemes.”

“Integrating our ideas on low traffic neighbourhoods with delivering community gardens and spaces right alongside where people live in high rise developments is the next cab off the rank to making Southbank [the] liveable neighbourhood residents want.”

“It will make an entrance statement on the southern end of the Dodds St linear park where the council and the University [of Melbourne] can display sculpture. This integrates the NGV, NGV Contemporary, ACCA and the university’s arts departments and makes a precinct a reality.”

“Freeing up area alongside ACCA as park and green space will encourage Southbank residents to think of ACCA as a local community gallery.”

ACCA’s CEO Max Delaney said the proposal was part of a “wider series of developments taking place across the Melbourne Arts Precinct, to improve the amenity of our cultural infrastructure and public realm, and to enhance the precinct as a destination for residents and wider community”.

“Granitic sand was never the preferred intention of ACCA’s architects, and additional green space will be a welcome addition to the contemporary Arts Precinct,” he said.

Transurban was contacted by *Southbank News* for comment. ●

QUEEN VICTORIA MARKET

online



**MARKET FRESH
 PRODUCE
 HOME DELIVERED**



Such a wide range of products. Everything is top notch.
 - Shaun



Fast and fresh produce at your fingertips... Amazing service!
 - Cate

QVM.COM.AU/SHOP



Meet the candidates

ELECTIONS

Locals will be given another chance to meet their candidates running for the seat of Albert Park ahead of the November 26 state election on November 15 and 16 at the Boyd Community Hub.

Hosted over two days by the Southbank Residents' Association (SRA) on Tuesday, November 15 and Wednesday, November 16 for a 6.30pm start both nights, candidates will be split between two events to allow locals ample time to hear from everyone in the race.

The first event on the Tuesday will hear from candidates from the major parties – Nina Taylor (Labor), Lauren Sherson (Liberal) and Kim Samiotis (Greens) – while the Wednesday event will hear from all other candidates, which currently includes Independent Georgina Dragwidge and the Animal Justice Party's Cassandra Westwood.

The free event will be moderated by former City of Melbourne councillor and Walkley Award winning journalist Stephen Mayne. For more information, see page 6 of this edition or email info@southbankresidents.org.au ●

Council to meet in Southbank

COUNCIL AFFAIRS

The City of Melbourne will host its next Future Melbourne Committee (FMC) meeting in Southbank on Tuesday, November 22 at 6pm.

As part of its new initiative in 2022 of hosting one of its two monthly FMC meetings away from Melbourne Town Hall, councillors have been meeting with locals in suburbs throughout the municipality, with agendas tailored to the respective area. November 22 will see councillors gather at Cliftons Melbourne, Freshwater Place (Level 18, 2 Southbank Boulevard) for the last FMC meeting as part of the neighbourhood series for 2022 at 6pm. Documentation for the meeting will be available from 2pm on Thursday, November 17. ●

Southbank Boulevard reaches an end, but new playground splits opinion

Continued from front page.

While the park's opening was embraced by many, it did however draw mixed feelings from the community that the playground created a "false confidence", and the overall design was different to what the council initially promised.

"It is a relief that the Southbank Boulevard project has finally been completed years late and after years of residents living in a construction site," Southbank3006 residents' group president David Hamilton said.

But he added while the playground had brought smiles to children's faces, the aesthetics were unappealing and "dominated by so many large rocks crammed into a small space", which consisted of twisted metal protruding from the rocks.

"Despite this, the fact that this playground has been so well received by children highlights that Southbank is bereft of outdoor activities and spaces for children and families."

"With the basketball court soon to be removed from the Boyd Community Park, it is essential that the council and the state government move swiftly to construct the Kings Way undercroft, as the council has planned and is ready to construct."

Southbank Residents' Association president Tony Penna said the new play space was "never about the greenery, but a functional children's park, which I think it has achieved", but he noted the playground's design was "never discussed in community consultation".

Mr Penna also highlighted that the Southbank Boulevard project, in fact, wasn't finished, with stage six of the works still yet to be delivered between City Rd and Southbank Promenade.

But *Southbank News* understands that funding and building stage six hinges on the completion of the STH BNK By Beulah dual skyscraper at the corner of Southbank Blvd and City Rd, which is due to be finished in 2028.

The new linear park along Dodds St, between



Southbank Boulevard and Grant St, which was also included in the original transformation concept, is now being undertaken as a separate project in conjunction with the council's public art program for Southbank.

Southbank News understands works are expected to begin on Dodds St this financial year.

The Southbank Boulevard project has become one of the City of Melbourne's most expensive in its history since it was approved in 2017 and has been plagued by delays.

Overall, it has seen 400 trees planted and 22,000 square metres of new public open space delivered, which Cr Capp said had been a "long time in the making", and thanked businesses and residents for their patience. ●

Could this pocket of Southbank decide a knife-edge election seat?

Continued from page 1.

Like Mr Hibbins, she told *Southbank News* that open space was a key issue for the local area.

"The Southbank community understands how important green space is to a vibrant community. The two enhance each other and it is what our community is known for," she said.

"That is why a re-elected Andrews Labor Government will give a \$1.5 million grant to the City of Melbourne to support new green space park in Southbank, giving local families a space to enjoy all year round. With many people, including myself, choosing to live in apartments or units without a backyard, green space is key to liveable and thriving communities."

Prior to the electoral changes announced in late 2021, Prahran's north-western boundary stopped at St Kilda Rd.

State electoral boundaries are created by the Electoral Boundaries Commission (EBC), an impartial statutory agency independent of the government.

According to the commission, the 2021 boundary update impacted more than one in five voters across the state with 910,384 Victorians (or 21.28 per cent of all electors) transferred to different districts.

A spokesperson said at the time that the EBC canvassed the thoughts and opinions of many before defining the new boundaries.

"The EBC has taken account of the information and arguments included in submissions and public hearings. The reasons for particular changes vary, but broadly the EBC considers that the final boundaries fit communities of interest better than the proposed boundaries while ensuring that all electorates are approximately equal."

The EBC does not consider the political implications of boundary changes.

Early voting for the Victorian Election opens on November 14.

To find early and/or election day voting centres near you, visit vec.vic.gov.au. ●



Your property is our focus. Take advantage of our local knowledge and expertise today.

Perfectly placed enhancing the northern end of Exhibition Street. Beautiful apartments are now ready for occupation.

Jill Anderson

jill@lmrealestate.com.au

M: 0419 581 804

Emma Powis

emma@lmrealestate.com.au

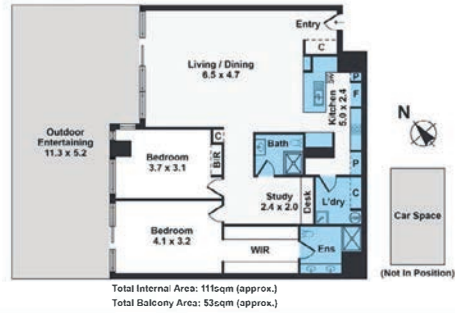
M: 0412 340 551



Level 4, 175 Flinders Lane, Melbourne VIC, 3000

Ph: 03 9670 5444

leasingmelbourne.com.au



603/45 Haig Street, Southbank

2 2 1

- Rare podium apartment in the exclusive Clarendon Towers
- Supersized kitchen with stainless appliances & breakfast bar

Auction
Contact Agent for Details

Michael Pastrikos
0404 282 864
michael.pastrikos@raywhite.com

PROUDLY RAY WHITE
raywhitesouthbank.com.au



1/2 Moore Street, Southbank

2 1 1

- Expansive entertainers terrace on title
- Large kitchen with island bench
- Two large bedrooms with built-in robes
- Rare low-rise complex in a charming garden setting.

Auction
Contact Agent for Details

Michael Pastrikos
0404 282 864
michael.pastrikos@raywhite.com
Bence Balazs
0437 810 755
sales.mp@raywhite.com

PROUDLY RAY WHITE
raywhitesouthbank.com.au



SPRING SELLING HAS BEGUN



Michael Pastrikos the most recommended agent in Southbank



To learn how to get the most for your property before the holiday season, contact Michael today



Michael Pastrikos
0404 282 864
michael.pastrikos@raywhite.com
Ray White Southbank
raywhitesouthbank.vic

Candidates talk Southbank

WORDS BY *Sean Car*
ELECTIONS

E-scooters, low-traffic neighbourhoods, the Arts Precinct transformation, trucks on City Rd, and a “master plan for Southbank” were just some of the issues discussed by candidates for the Victorian seat of Albert Park at a forum in Southbank on November 6.

Hosted by residents’ group Southbank3006 at the Holiday Inn on City Rd, the all-women line-up of candidates met with Southbankers to discuss a range of important issues affecting the area ahead of the November 26 state election.

The candidates in attendance included Labor’s Nina Taylor, who replaces long-serving member Martin Foley, as well as Kim Samiotis (Greens), Lauren Sherson (Liberal) and Georgina Dragwidge (Independent).

Moderated by former Mayor of Port Phillip Bernadene Voss, candidates were each given time to introduce themselves to the audience before questions from the floor were opened, as well as from those tuning in via a Facebook livestream.

The forum got under way on the topic of regulation of e-scooters, safety, and the state government’s current trial in the Cities of Melbourne, Port Phillip and Yarra in partnership with e-scooter providers Lime and Neuron.

Safety surrounding the use of e-scooters and pedestrians has emerged as an important local issue since the 12-month trial began at the start of 2021, with many crashes, injuries, near misses and reports of poor user behaviour having been cited.

With tourism and foot traffic beginning to return to pre-COVID levels along busy local spaces such as Southbank Promenade, Ms Voss asked candidates what they thought was the right balance between “enforcement versus education”.

Ms Samiotis said the Greens were committed to providing more safe cycling infrastructure such as separated lanes to help “take e-scooters

off footpaths”, stating that they should be classed as road vehicles, so riders were held to account in the same way drivers were.

But the Liberal candidate Ms Sherson described pop-up bike lanes as “an absolute disaster”, saying they should instead be called “pop-up scooter lanes”.

“We have unregistered vehicles, two people riding on a scooter at a time, riding on and off footpaths,” Ms Sherson said. “Safety of children and of cyclists is paramount”.

Ms Taylor said many locals had cited concerns surrounding rider behaviour and e-scooter speeds, stating locals shouldn’t have to “step out on the footpaths only to have to contend with an e-scooter hooning along”.

“The trial is still under way,” Ms Taylor said. “The Minister for Transport will be taking on all that feedback”, adding, “cycling infrastructure and active transport should always be encouraged”.

The Independent candidate Ms Dragwidge – a long-time trader at South Melbourne Market – said she believed it was time to “get the TAC involved” to provide greater regulation. “We shouldn’t trial things that can kill people,” she said.

Residents also raised issues about light pollution in the city, as well as the state government’s recent announcement that it will reinstate the State Electricity Commission (SEC) to take back control of Victoria’s energy market if re-elected.

Ms Taylor said the establishment of the SEC would see an end to coal-fired power, and 95 per cent of Victoria’s energy grid powered by renewable energy by 2035 to address climate change and slash electricity prices for consumers.

But Ms Samiotis questioned the government’s targets, reinforcing the Greens policy on transitioning out of coal and gas by 2030. “Labor still wants to open new gas drilling projects near the 12 Apostles,” she said.

Ms Sherson criticised the proposal by the Andrews’ Government, stating that she considered it “socialism to de-privatise the

electricity market”, while highlighting the Liberals’ plan to introduce more hydrogen energy and “actually legislate targets”.

Southbank3006 secretary Trisha Avery also asked candidates what they would each do to “ensure liveability and amenity” in Southbank, citing her group’s policy to implement “low-traffic neighbourhoods” to improve pedestrianisation and open up new green spaces.

Ms Samiotis reinforced the need for more bicycle infrastructure, limiting the number of “big trucks” using Southbank’s streets, as well as regulating the short-stay accommodation industry so more locals could “enjoy the area as their home”.

Ms Sherson responded by saying, “Southbank needs a master plan”.

“How do we connect the promenade to the residents? And why can’t we open up the tunnels and get the heavy vehicle trucks off our roads,” Ms Sherson said, adding that the “City of Melbourne had failed in its capital works delivery”.

While acknowledging that there was “a lot of scope for improvement”, Ms Taylor said the state government’s transformation of Arts Precinct would “in itself” increase connectivity in the area, as well as add new parklands “larger than the surface of the MCG”.

Addressing locals in the audience directly, Ms Dragwidge said, “you have the answers. The government needs to listen to them.”

As the conversation continued into the Arts Precinct upgrades, which includes the construction of the new NGV Contemporary on Southbank Boulevard, Ms Dragwidge said locals she’d spoken to had been “pretty impressed by the level of consultation” that had occurred so far.

But on the question of consultation with locals on all issues, she said, “as an independent, I would only be answerable to you, and give you a louder voice.”

With construction on the NGV Contemporary to begin next year, Ms Taylor said consultation would continue, but urged locals “not to

hold back”.

“Your voices are going to be critical, don’t hold back. It will make for the best possible outcome,” she said.

But both Ms Sherson and Ms Samiotis slammed the government’s record on consultation, with the former saying there appeared to be a “mismatch between reality and what’s being said”.

“Every day I’m hearing [from locals], ‘I’m not being consulted’, Ms Sherson said. “Labor projects are always over time and over budget – we are going to stop that.”

Ms Samiotis said when it came to consultation, the Greens were “embedded in the community”.

“Labor’s idea of community consultation is a bit of a façade,” she said, adding that when it came to the major parties being compromised by donations, locals needed an “unburdened voice to represent you”.

Other issues discussed included working with local councils to improve waste management, climate change and the growing threat of flooding and heat stress in Southbank, green space and removing trucks off City Rd.

Ms Dragwidge said the government needed to explore ways to safely open up the Domain and Burnley tunnels to larger trucks. “If it can be done elsewhere, why can’t it be done here?” she asked.

Ms Taylor said the government was currently in the process of shifting more freight from “port to rail” in an effort to get more trucks off city roads, arguing there were a number of safety and animal welfare issues associated with trucks using the tunnel.

In response, Ms Sherson said, “in short, open the tunnel!”

While acknowledging that there were “some good ideas” around greater use of the tunnels, Ms Samiotis said live animal transport and exports were “inhumane no matter what way you look at it”.

Animal Justice Party candidate for Albert Park Cassandra Westwood did not attend the forum on November 6. ●



Hello!

My name is Denis Payne.
When I’m not zipping down the highway
on my trusted motorcycle, I’m helping first
home buyers achieve their first homes.

With Fox Loans on your side, your first
home loan *doesn't have to feel* like debt.

Let's connect!

Call/Text
0491 908 866

info@foxloans.com.au
FoxLoans.com.au



Scan me

Our Locations

Fox Loans – Melbourne
403/434 St Kilda Road, Melbourne 3004

Fox Loans – Hawthorn
22 Church St, Hawthorn VIC 3122

FOX
LOANS



Southbank Residents Association

Meet the Candidates Event

Another state election is upon us!

SRA have been holding these events for over 20 years, giving our community the opportunity to be heard and ask the hard-hitting questions.

We're inviting all Southbank residents to hear the policies and position of the candidates in this open forum. These are always full-house events, so arrive early, grab a seat and let us hear your concerns.

This event will be moderated by Walkley Award winning journalist and past City of Melbourne Councillor, Stephen Mayne.



Moderator:
Stephen Mayne
Walkley Award winning
journalist and past
City of Melbourne
Councillor

This event will be held across two dates:

- Major Parties - **Labor, Liberal & Greens** - Tuesday, 15 November
- Minor Parties/Independents - Wednesday, 16 November



Nina Taylor MP
Australian Labor Party



Lauren Sherson
Liberal Party of Australia



Kim Samiotis
Australian Greens



Date: Tuesday, 15 November + Wednesday, 16 November
Time: 6.30pm both nights
Where: Boyd Community Hub - 207 City Rd, Southbank

SRA: info@southbankresidents.org.au www.southbankresidents.org.au
This free community event is an initiative of the Southbank Residents Association

New zebra crossings coming to Balston and Kavanagh streets

WORDS BY *Brendan Rees*
SAFETY & SECURITY

A push for pedestrian crossings to be installed at Balston and Kavanagh streets has received the City of Melbourne's backing, with works to begin in a few months.

The council has confirmed it would put in four new zebra crossings at the intersection, making it safer to access the popular Boyd Park and the newly-built Woolworths supermarket at Melbourne Square.

The installation will also include a crossing at the Balston St and City Rd intersection.

"The works will improve the safety and comfort of pedestrians crossing these streets, by giving them priority over vehicles," a council notice read.

"We'll also install narrow road humps, a speed cushion and traffic islands, to further slow traffic near the crossings."

Residents expressed excitement about the news after having highlighted their concerns about road safety in the area.

"Southbank3006 are delighted to see that the concerns the community have regarding pedestrian safety are not only being heard, but also acted upon by the City of Melbourne," Southbank3006 residents' group vice president Jannine Pattison said.

"In 2021 I had the privilege of taking Lord Mayor Sally Capp on a walking tour of Southbank to show her first-hand what we experience every day and [ways to] address the road safety problems pedestrians face in Southbank. It was indeed an eye opener," Ms Pattison said, which included talks of creating a zebra crossing at Balston and Kavanagh streets.

Ms Pattison said the plan to feature traffic calming measures to reduce vehicle speed were "sorely needed in Southbank" prompting her to pose the question: "Is this the precursor to instigating a low traffic neighbourhood in Southbank? I can only hope so."

"Southbank3006 would like to thank the City



▲ *Jannine Pattison and Mary Kay Rauma of the Southbank3006 residents' group celebrate the news the council will install new crossings at Balston and Kavanagh streets.*

of Melbourne for this improvement in pedestrian safety and we look forward to working together as a proactive, solutions-based residents' representative as we continue our advocacy for a better and more liveable Southbank."

Southbank Residents' Association (SRA) president Tony Penna said it was also delighted the council had "finally taken action on these dangerous streets".

However, he noted SRA was disappointed with how long it took after talks with the council on the issue began before the COVID-19 pandemic.

Cr Capp said the council was committed to road and pedestrian safety, and reiterated that \$13.7 million from the 2022-23 budget would go towards repairing and maintaining footpaths, roads, and other transport infrastructure.

"We're doing everything we can to ensure people can move safely around our municipality, whether it's by public transport, car, bike or foot," she said.

As part of installing the new crossings, the council will remove one 10-minute parking space in Balston St and one three-hour meter space in Kavanagh St so drivers can better see pedestrians stepping onto the new crossings.

The works are due to start in the next few months. ●

Southbank "neighbourhood portal" goes live

WORDS BY *David Schout*
COUNCIL AFFAIRS

An online portal for those who live, work or study in Southbank has gone live, giving locals a dedicated space to keep up to date with works and events in postcode 3008, and have a say on its future.

One of 10 "neighbourhood portals" that have recently been launched by the City of Melbourne — each covering different suburbs in the municipality — the webpage is intended to be a one-stop space that covers everything Southbank.

This includes, for example, development activity updates, how to book a space or meeting room, how to apply for funding, and importantly, how to have your say on things that were impacting the local community.

Notably, the council has employed a "partner" for Southbank (and all nine other neighbourhoods), who will act as the main point-of-contact on specific issues within the area.

It is hoped that the initiative will allow the community to better connect with the council by helping share its ideas for the future.

The council has acknowledged that there were vast differences in different suburbs within the municipality (for example, between Southbank and East Melbourne) and said its new "place-based" neighbourhood approach would ensure it could understand and respond to unique communities.

It said that this model ensured a "continuous cycle of community engagement", where local knowledge and priorities were translated into action.

"We know that each neighbourhood has different needs, opportunities and challenges, so we're proud to be rolling out a dedicated Neighbourhood Portal for every community across the municipality," Lord Mayor Sally Capp told *Southbank News*.

"We're listening to our Southbank community, who told us that creating more dog-friendly places and green open space is

important to them."

"That's why we're doubling the number of off-leash areas for dogs across the municipality and unlocking new open space — including a new dog park on the Kings Way and Moray Street Reserve and the lawns of Point Park."

"Our Neighbourhood Portals are helping us better understand our residents, workers, traders, students and visitors — and the things that matter most to them."

The portals were endorsed at the council's Future Melbourne Committee meeting on June 14.

The council's Health, Wellbeing and Belonging portfolio chair Cr Dr Olivia Ball said at the time that it was important recognition of suburbs outside the Hoddle Grid.

"Many people think of the City of Melbourne as the CBD, but it is, in fact, as you well know, the CBD plus all of the surrounding suburbs and each of them has its own needs and distinctive features," Cr Dr Ball said.

The council will create a database of people's views on certain topics, not merely from locals' input into the online portal but from letters and phone calls, which would be tagged by topic and location.

"We will build up, for our purposes, an internal-facing knowledge bank where we can find [for example] 'what does North Melbourne think about off-leash dog parks?' Or 'what does North Melbourne think about vaccinations?' Etc, so we have — building up over time — an accessible and accurate picture of what each community wants on different topics," Cr Dr Ball said.

The first two neighbourhood portals (for the CBD and Kensington) were launched in June and received 1800 unique visitors in the first three months according to the council.

As of October 26, all 10 neighbourhood portals were live. The remaining eight are: Carlton, Docklands, East Melbourne, North Melbourne, Parkville, Southbank, South Yarra and West Melbourne.

To find out more visit participate.melbourne.vic.gov.au/neighbourhoods ●

Twitter Facebook Instagram NinaTaylorMP

ACTION
not words.

NINA
TAYLOR
MP

Labor candidate for
ALBERT PARK

VOTE 1

Victorian
Labor

Authorised by C. Ford, ALP, 438 Docklands Drive, Docklands VIC 3008

ADVERTISEMENT
Your City of Melbourne community update

MEET YOUR CITY OF MELBOURNE COUNCILLORS



LORD MAYOR SALLY CAPP

A vision for a cleaner, greener, busier city

Elected leaders might expect a few surprises once they're voted into office, but who could predict a once-in-a-century pandemic?

Lord Mayor Sally Capp quickly became a key figure in managing the city's response, a period she says was defined by 'ingenuity and collaboration'.

'It really was a time of collaboration and I've got more telephone numbers in my book than I ever had before,' the Lord Mayor said.

'I can call colleagues in state and federal government. We see efforts to bring Melbourne back better right across the private sector, community sector and cultural institutions. They're all pitching in to say "what can we do?"'

Indeed a typical week for the Lord Mayor features numerous meetings with a huge range of Melburnians and delegates from interstate and overseas.

'This morning I was with a small business owner hearing their great ideas to attract new customers. I applaud people for every single day making the effort to find ways to keep their doors open and people employed and customers coming in. That is so Melbourne.'

She'd recently worked the room at an arts festival launch encircled by acrobats and singers; welcomed an American climate policy foundation impressed with City of Melbourne initiatives; and taken a look at Melbourne Fashion Week planning.

'Ambassadors, residents groups, it could not be more varied. I see the catering staff here at Town Hall at six in the morning preparing beautiful

food for lunches at Town Hall. I'm an early starter and see the city awakening. We are a very big part of that.'

She believes the motivation for running for Lord Mayor held her in good stead for helping manage the city's COVID response and ongoing recovery. Melbourne was the hardest hit city in Australia, with long lockdowns emptying our streets and devastating the local economy - creating major challenges for the city and the Victorian Government, who worked closely together on revitalisation initiatives.

Reflecting on the past few years, she said: 'There were certainly lots of surprises about being Lord Mayor. I think it's important for everyone who takes on a leadership role to have a real passion for something, because there are going to be lots of challenges and the passion keeps you focused and feeling driven.'

'For me, that passion was for Melbourne. I'd had many roles in the past where I'd represented Melbourne or been involved in issues about the city, in roles such as CEO of the Committee for Melbourne, and representation and trade investment roles such as Agent-General for Victoria.'

One of the most satisfying aspects of her role, she said, is making a difference at the local level for Melbourne's neighbourhoods.

'Of course the list of things to do never ends and that can be overwhelming at times. I really focus on the things we can do which helps move me away from the things I can't get done,' she said.

Asked what she's most proud of midway through her term as Lord Mayor, she singles out 'the whole response of City of Melbourne to the pandemic. The Queen Victoria Market renewal was at an absolute stalemate and that is now moving ahead. Also, I'm so proud the city understands we can play a major role in helping people experiencing homelessness by dedicating a building to support them through the Make Room program.'

The Greenline Project to transform the river's north bank 'has excited and galvanised people', she said.

'It's moved beyond just my passion project - it has a business case, initial funding and multiple agencies working on it. I'm also really excited about Power Melbourne and the way we can change the paradigm on renewable energy in cities.'

'This is another reflection for me about the City of Melbourne. We are brave, we are happy to step into the unknown and to say this is important and we should give it a try. I think that sense of taking some risks because it's worth it, because it could and should lead us to better outcomes, that is extraordinary. I used to look at government as a very risk-averse, status quo kind of body, and I look at City of Melbourne and I think, wow, this is an organisation with people with the courage to do the right thing. I think that reflects where our citizens expect us to be.'

'Look at what we've done on the change the date discussion around 26 January - we had the debate, we've done the work. These are difficult conversations and they're challenging but they're important and we take a stand on these things which I think is fantastic.'



Meetings, conversations, decision-making continue apace in her life as there's much still to do, together with all councillors and staff, she said.

'We need to keep delivering on our essential services, to be a cleaner city, and to take bigger aspirational roles in important issues like climate change, being a greener city; and I think ultimately, following the pandemic experience, it's about being a busier city. Melbourne can be a magnet for students, residents, investors, business owners, workers, creatives - whatever your personal passions or professional pursuits are, you can do them here in Melbourne.'

To read the full story and watch the video visit magazine.melbourne.vic.gov.au

Connect with us

[/cityofmelbourne](https://www.facebook.com/cityofmelbourne)
[@cityofmelbourne](https://www.instagram.com/cityofmelbourne)
[@cityofmelbourne](https://www.twitter.com/cityofmelbourne)



Southbank-based television service celebrated in the Melbourne Awards

WORDS BY *Kaylah-Joelle Baker*
COMMUNITY

After moving to Southbank, not-for-profit community television service Channel 31 (C31) is seemingly going from strength to strength with its latest achievement of becoming a 2022 Melbourne Award finalist.

The channel's importance has been highly noted during the past couple of years, particularly since it faced fears of closure in 2021 before receiving a surprising last-minute extension to its broadcasting licence from the federal government.

Surviving through the lockdown has been no small task for the C31 staff, and it is the reason behind why C31 operations and business development manager Lisa McLean said it was hopeful that winning the award would continue to "remind the entire community that [they] are still here and going strong".

Since its licence extension and release of Australia's first community broadcast streaming service, C31 has proven its worth as a diverse and inclusive service, that survives to benefit and serve the local Melbourne community.

It is for these reasons that the television service has been included in the community category.

"C31 broadcasts voices and stories not usually heard in mainstream media, with most of our programs made by community volunteers and independent program makers," Ms McLean said.

"These programs tell their stories, and share

the traditions, news and culture of communities across Melbourne and beyond."

The Melbourne Awards are a time to celebrate all the inspiring people and groups that have come together for the benefit of the community, and C31's recent project was recognised for doing just this.

"Being named as a finalist in the City of Melbourne Awards for the project *Telling Melbourne's Stories* recognises the amazing work done by the C31 team of staff and volunteers," Ms McLean said.

"The Award specifically focuses on two stories; faith broadcasts during lockdown and beyond, and our partnership with The Attitude Foundation to support internships for aspiring broadcast professionals with lived experience of disability."

"These stories truly represent the values of community television, with C31 ensuring that space is made for everyone to have the opportunity to make and be part of programs that are truly representative of our Melbourne community."

The Melbourne Awards are considered one of the City of Melbourne's highest accolades, and this year marks its 20th year.

Running alongside C31 as finalists in the community category are Kensington Neighbourhood House, Meals With Impact, and Travellers Aid Australia.

Other categories making up the awards are Aboriginal Melbourne – ganbu guljin, Arts and Events, Hospitality, Knowledge and Innovation, LGBTIQ+, Sustainability, and Urban Design.



▲ L-R: General Manager Shane Dunlop, Head of Production Lauren Colosimo, Programming Manager Rachel Webster, and Operations Manager Lisa McLean.

Southbank's premium event space Metropolis Events, located in the Southgate precinct, has also been nominated within the Hospitality category, a recognition general manager Phillip Williams said it was "honoured" to have received.

"Being a finalist acknowledges all the hard work the team has completed since we opened in 2016 and establishes our brand as a leader within the events industry," he said.

"Being a finalist (and if we win) means we can continue to contribute to the economic impact in Melbourne by attracting overseas and interstate travellers whilst being a pioneer in the rapidly changing hospitality landscape."

As a "relatively young company" having only

opened in 2016, Metropolis Events has continued to satisfy its customers with "picture-perfect views, fabulous food, and a service team that is second to none", with hopes to continue to provide for the community.

The award ceremony will take place in person on Saturday, November 12 at Melbourne Town Hall, and will be televised on Channel Nine the following day.

While it's a night to recognise the selected winners, it is also a time to acknowledge and celebrate all the incredible hard work being done by all the 27 finalists making up the eight categories.

"We're looking forward to celebrating the outstanding and inspirational achievements of each and every finalist in what will be a night to remember," Lord Mayor Sally Capp said.

"People make our city the great place that it is – and the Melbourne Awards provide an incredible opportunity to showcase the efforts of ordinary Melburnians doing extraordinary things."

A Melburnian of the Year will also be recognised and celebrated for being a role model who has made an outstanding contribution to the city, and within their field of work. ●



Kaylah-Joelle Baker

JOURNALIST

KAYLAH@HYPERLOCALNEWS.COM.AU

Visitation back to pre-COVID levels at the South Melbourne Market

WORDS BY *Brendan Rees*
BUSINESS

The South Melbourne Market has "rapidly returned to being vibrant" with visitation levels bouncing back to pre-COVID levels in recent months, according to its annual report released in October.

About four million people visited the market in 2021-22, a drop of about a million visitors compared to 2018-19 before the pandemic.

But visitation began to return to pre-pandemic levels in June this year and "our customers love the market just as much as ever", the report said.

Despite two gruelling years of rolling lockdowns – which resulted in a \$242,000 operating deficit after rent fees were frozen and carparking revenue also significantly reducing – the market retained a 99 per cent stall occupancy rate throughout 2020-21.

"Building financial stability is a key strategic priority of the market and committee and – global pandemics aside – the work done this year to develop new revenue models and minimise costs stands the market in good stead for the future," the report said.

City of Port Phillip mayor Marcus Pearl said while the market was back to performing well there were challenges ahead, noting "now is the time to reposition the market for the current



▲ Gila Cavalli, owner of Cavalli Leather Goods and Fashion, says the support of visitors to the South Melbourne Market had been amazing.

and future resident base".

"We've reviewed some governance structures at the market, which is important, but this report highlights some of the financial challenges that the market is facing, but also some of the wonderful things that are going on that's made the market such a huge success particularly in the past 10 or 12 years," he said at the council's meeting on October 19.

Owner of Cavalli Leather Goods and Fashion Gila Cavalli, who has been at the South Melbourne Market for nearly 30 years, said trading was looking "very positive" thanks to the market's supportive management.



▲ Moshe, who runs Moses and Co. Market Wholefoods, said the market was getting back to its best following the pandemic.

"Since we opened [after lockdowns] it's been amazing, the locals have been supportive," she said, but noted it had "slowed down a bit" on Wednesdays and Fridays, possibly due to a drop in workers not being in their offices and people being impacted by rising living costs although retail trade was still strong on weekends.

"I think it will change, I'm very positive. We would like to see more people to support us, it's a local market, we love you, they love us," Ms Cavalli said.

Ms Cavalli said trading had seen a consistent flow of customers and she was grateful for the support of her loyal customers.

Moshe, who runs Moses and Co. Market Wholefoods, a family-owned and -run business with over 30 years in the health food industry, said the market was "buzzing", but noted "we still need to see more coming back and new visitors".

"We are consistent, but it's not 2019 due of office workers who are not 100 per cent back," he said while also noting high inflation costs was the biggest challenge facing traders.

"It's hard for everyone; for the customers, for the retailers, for the delivery people, everyone is hurting," he said pointing to rising petrol and shipping costs.

"We can always be better for businesses to survive and to keep going and sustain themselves."

But he said a huge positive was the market's "diverse community and amazing loyal customers".

The annual reported showed an "exceptional community satisfaction results" with 97 per cent of respondents rating the market offer as "very good or excellent and a benchmark-exceeding NPS (net promoter score) of 75.5."

Improvements made to the market included internal spaces with the installation of new floorings, fixtures, and fittings as well as improved accessibility and safety for visitors.

Construction for a permanent alfresco dining precinct adjacent to the food hall, is due to be completed during spring 2022. ●



THE JOY OF
MUSIC COMES
TO SOUTH
MELBOURNE

 **YAMAHA**
YAMAHA MUSIC SCHOOL

Starting your family on a journey in music is one that gives a lifetime of joy and happiness.

We're excited to continue this journey with you at our new South Melbourne location, 17B Market Street.



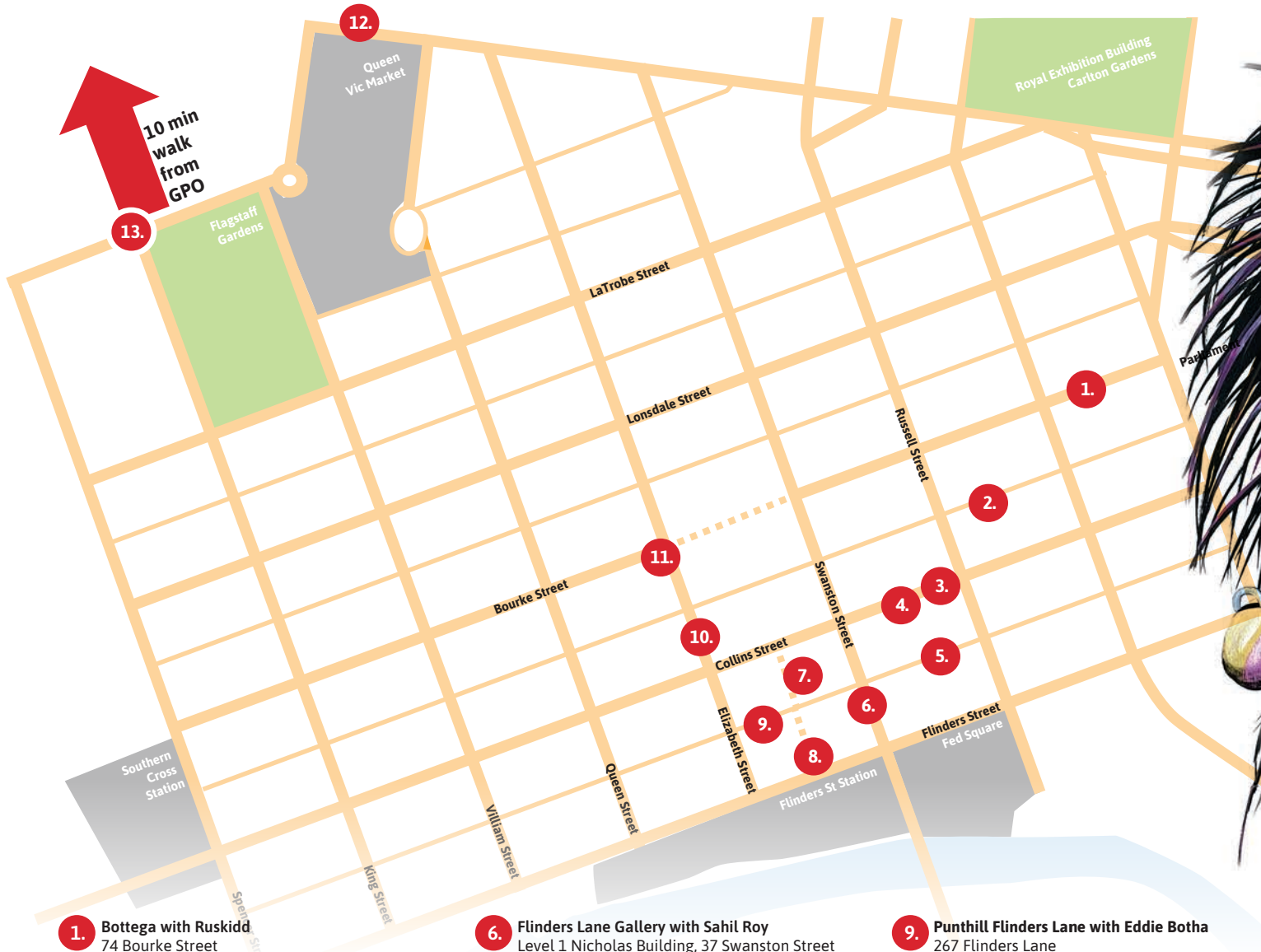
SCAN TO
LEARN MORE

au.yamaha.com/education

The HODDLE HUNT

VISIT • ENTER • WIN

CITY
PRECINCT



- 1. Bottega with Ruskidd
74 Bourke Street
- 2. e.etal with Fikaris
150 Little Collins Street
- 3. Gray Reid Gallery with Manda Lane
156 Collins Street
- 4. Melbourne Athenaeum Library with Gnashingteeth
Level 1, 188 Collins Street
- 5. Adelphi Hotel with ADI
187 Flinders Lane
- 6. Flinders Lane Gallery with Sahil Roy
Level 1 Nicholas Building, 37 Swanston Street
- 7. Ginger Olive Restaurant & Grill with Mort Murray
Shop 2, 38 Manchester Lane
- 8. Clementine's with Ruskidd
7 Degraeves Street
Il Papiro with Kasper
10 Degraeves Street
- 9. Punthill Flinders Lane with Eddie Botha
267 Flinders Lane
- 10. Master Café by Art Masterclass with HWJ
94 Elizabeth Street
- 11. Evelyn Faye Nutrition with Mr Dimples
360 Bourke St
- 12. Books for Cooks with Chico.wun
Queen Victoria Market, 115-121 Victoria Street
- 13. West End Art Space with Oskr.2021
112 Adderley St, West Melbourne

\$17,000 Worth of street art prizes to be won

Small businesses within the Hoddle Grid can join City Precinct at www.cityprecinct.com.au



pasteup.com.au



Proudly supported by the City of Melbourne and the Victorian Government.



Please support our advertisers because without them we would have no Southbank News

Macfarlane Fund celebrated for its leadership

WORDS BY *Kaylah-Joelle Baker*
ARTS & CULTURE

Creative Partnerships Australia has announced its 2022 Creative Partnerships Award winners and among the highly celebrated list are Helen and Melissa Macfarlane, who established The Macfarlane Fund.

Awarded with the Emerging Philanthropy Leadership Award, The Macfarlane Fund was nominated by Southbank's Australian Contemporary Centre for Arts (ACCA) for its long-standing commitment to the arts institute.

"For ACCA as an organisation, the multi-year commitment from the Macfarlanes has afforded us financial certainty and sustainability," ACCA artistic director and CEO Max Delany said.

"For the artists, the series offers an all-too-rare opportunity to make major new work, something that they may not have been able to achieve otherwise."

Reflecting on the philanthropic funding organisation, Mr Delany said ACCA had a "true partnership" with the Macfarlanes and it was "pleased" that their creative and flexible approach had been recognised nationally.

"Like ACCA, Helen and Melissa Macfarlane are committed to doing things differently, and have a genuine enthusiasm for artists and the art-making process which has made the relationship rewarding for all of us," Mr Delany said.

The Macfarlane Fund was established in memory of philanthropist, former CEO of Amcor and life-long arts enthusiast Don Macfarlane, by Don's wife Helen and daughter Melissa. Following his passing, they have continued on with his legacy, interests, and embodying his ethos through The Macfarlane Fund.

"There was never any discussion over what to donate to, it was always going to be visual arts," Melissa said.

"That was my father's first love as well as mine and my mother's. We believe that art will always be made, but well-funded art will take the artist to the next level. For us it's about opportunities for the artists."

The Macfarlane Fund currently has a multi-year commitment with ACCA in the form of a commissions series which allows artists with the rare opportunity to produce and make major new works. The biennial exhibition series has been seen as critical in allowing for ACCA to have financial certainty and sustainability and has to this date been the single largest gift



the organisation has received.

After being recognised for their efforts in championing Australian artists, Helen and Melissa said they felt "grateful" and "incredibly humbled" to have been chosen for the recent award.

"We set out to do philanthropy differently and we achieved this in six years. It's very rewarding for our board as well, who donate their time to steer the fund," they said.

"Philanthropy is a journey that we are privileged to be able to go on. We are aiming for best practice [and] our relationship with ACCA is genuine and has a collaborative feel."

Eight other leaders in private giving, philanthropy, and business partnerships with the arts were also recognised and awarded for their efforts.

Joining The Macfarlane Fund on the list of 2022 Creative Partnerships Award winners are:

- Arts Visionary Award – Ulrike Klein AO
- Philanthropy Leadership Award – Neilson Foundation
- Philanthropy Leadership Award – Paul Taylor
- Business Leadership Award – John Albrecht
- Arts Leadership Award – Barbara Moore

Local supporters of Melbourne's arts sector have been on the rise according to Creative Partnerships Australia, and the past 12 months has seen more than 500 campaigns on the Australian Cultural Fund platform. The fund also had more than 9192 donations from art lovers and philanthropists, with 8201 of them being first-time donors. Reflecting on this year's winners, Creative Partnerships Australia CEO Fiona Menzies said the partnerships and relationships formed between the recipients and arts organisations were "characterised by a mutual understanding of the value of the arts and culture in the Australian community".

"These are relationships built over time; time spent listening and exchanging ideas, in order to truly understand each other's needs and objectives," Ms Menzies said.

"They are not only generous supporters, but they have become ambassadors for the work and organisations they support." ●

What flower is that?

WORDS BY *Rhonda Dredge*
ENVIRONMENT

It's November in the Royal Botanic Gardens and visitors are out on all the paths naming flowers as they go.

Linda Bird is in the cottage garden inspecting blooms along a hidden path cut off from the main grounds.

She's leaving nothing to chance and has an app on her phone which impresses her friend.

The app is called *Picture This* and it is one of many that are giving amateur gardeners the confidence to name species.

"There is a rose campion," Linda said, taking a picture of a grey foliaged perennial.

Sure enough, the flower in the garden matches the picture that comes up on her phone.

It's not actually a rose but a pinkish flower on a long stem without thorns.

Flower identification can be difficult even for the trained gardeners who record every plant at the gardens on a database.

The inventory is called the Living Collection Census and it's recently been made available to the general public.

The census will identify the bed in which a species is located but spotters will still have to hunt for the label.

The Gardens didn't go down the app path according to its manager of biodiversity services Alastair Robinson, because the apps are not accurate enough for botanists.

"Most use computer algorithms," he said. "One of the companies asked if we wanted to collaborate on one."

"They're good for European and house plants



▲ Linda Bird identifies a rose campion.

but a lot of Australian species look too similar."

Most of the flowers in the Gardens are planted within themed areas such as dryland plants or ones with grey foliage near the Temple Winds.

The cottage garden is unique in that freedom reigns here. You don't need a map. The flowers are higgeldy piggeldy but grouped with an artistic eye for colour, all shades of pink or red.

Nearby the rose campion, Linda has identified an Aztec lily and a gazania which also goes by the name of "treasure flower".

For those with a more old-fashioned approach to their floral blooms there are flower-pressing workshops available at the cottage.

The cottage also sells ready-made rings for \$5 for spring and Christmas garlands.

"During the lockdown I was landscaping," Linda said. "I took pictures of all the things in the garden." ●

For more information:
data.rbg.vic.gov.au/rbgcensus

Students engage with cutting-edge tech at Manufacturing Innovation Showcase

WORDS BY *Brendan Rees*
EDUCATION

From robotics to virtual reality and 3D printing, Port Melbourne Secondary College students have received the ultimate hands-on lesson when it comes to cutting-edge technology.

Year 7 students were inspired after taking part in the Australian Manufacturing Innovation Showcase at The Timber Yard in Port Melbourne – situated in the heart of the Fishermans Bend precinct – which brought together 41 manufacturers from across Australia to demonstrate how new technology can help to solve complex problems and to offer opportunities for growth.

Students were also able to connect with experts from universities and industry to grow their passion for and understanding of the breadth of STEM-focused careers.

The two-day event was a celebration of the work of the Innovative Manufacturing Cooperative Research Centre (IMCRC) based at RMIT University's city campus, which is helping transform Australia's manufacturing industry through collaborative investment, research impact and innovation.

Port Melbourne Secondary College principal Anne Stout said the visit to the showcase on November 3 was a "fantastic day" to provide students with "a real sense of how their learning in school connects meaningfully to their potential future worlds of study and work".

"Our students found it fascinating to consider some of the problems that the different groups were working on, many of which we simply wouldn't have realised were industry problems, such as maintaining the health of electricity poles, or helping engineers on defence ships manage mechanical issues in real time," she said.

"Seeing the world through the eyes of those working across a range of different industries and organisations was really interesting... we'll be looking at the world around us in a completely new way from now on."



The IMCRC's director of industrial transformation Simon Dawson said the event was a success as it showed the "breadth and depth" of collaborative research and development in Australia.

"The event was a celebration of the work of the Innovative Manufacturing Cooperative Research Centre and their partners who have successfully delivered 71 innovative manufacturing projects generating more than \$230 million in research and development investment," he said. ●

Emeline Giron, YOUR EXPERT IN B.I.G. EXACT LENSES

Those who want to experience B.I.G. EXACT™ lenses themselves, can book an eye test at **Bellocchio Eyewear.**

"Fashion, Experience, Individuality"

Book an
Eye Test
Today!

Scan QR code for
more details



bellocchio

242 Clarendon St, South Melbourne VIC 3205
(03) 9690 8844
www.bellocchio.com.au

RODENSTOCK
Because every eye is different

Heritage review pinpoints South Yarra places for greater protection

WORDS BY *David Schout*
HERITAGE

The first heritage study of South Yarra in almost 40 years has identified 17 local churches, hotels, and apartment buildings as worthy of new or greater protection due to their significance to the local area.

The South Yarra Heritage Review, which covered the area immediately east and south-east of Southbank, recommended that places without existing protection, like the former Chevron Hotel, the South Yarra Telephone Exchange and the 1930s-built Kia Ora flats, all be granted individual heritage overlays.

These places were all noted for either their high architectural or historical merit.

The review, which the City of Melbourne engaged consultants GML Heritage to conduct, also included a recommendation to afford greater protection to places like Melbourne Girls Grammar School, Fairlie flats, the former Wesleyan Church and Wesley College.

Two further places recommended for inclusion as an "individual heritage place" — South Yarra Primary School and the former Fawkner Club Hotel — were identified as having Aboriginal associations.

City of Melbourne councillors were expected to endorse the review at a November 8 Future Melbourne Committee meeting, which took place following the publication of the November edition of *Southbank News*.

The council was seeking interim heritage protections (termed amendment C425) for notable places in South Yarra while the amendment for permanent controls (C426) progressed.

It is the latest in a series of rolling heritage reviews throughout the municipality to ensure the most up-to-date protection of the city's valued places.

The Southbank Heritage Review — which has ensured key local sites such as the Queensbridge Hotel, the Robur Tea House, and the former Castlemaine Brewery were now all protected to a greater level — was commissioned by the



▲ The review was the first heritage study of South Yarra in 37 years. Picture: State Library of Victoria.



These places were all noted for either their high architectural or historical merit.



council in 2017, adopted in 2020, and approved by the Victorian Minister for Planning in 2021.

The council also recently completed heritage reviews of both the Hoddle Grid and Fishermans Bend.

The South Yarra Heritage Review — the first heritage study of the local area since 1985 — began in August 2020 and was initially expected to be completed by the end of June 2021, however delays were experienced due to COVID-19.

Like other heritage studies, it identified key locations within the local area that were worthy of "protection" under the planning scheme; that is, where higher levels of scrutiny should

be applied to any future development plans on the site.

The council said it wanted to assess the South Yarra area to "better understand its physical and cultural heritage and find out what makes it different to other communities in the city".

A number of places within the review area (bounded by St Kilda Rd to the west and Alexandra Avenue and Boathouse Drive to the north, High St to the south and Punt Rd to the east) are already on the Victorian Heritage Register.

These include the Sidney Myer Music Bowl, Government House and Grounds, the Royal Botanic Gardens and the Shrine of Remembrance Reserve.

The council consulted with a range of stakeholders throughout the review, including Traditional Owners and custodians, and the Melbourne South Yarra Residents' Group.

It also received 54 contributions via its Participate Melbourne webpage.

In the report to councillors, the historical context of South Yarra was noted as having "high ground, rich soil, tree cover and access to fresh water", which contributed to its "significance for Traditional Owners who used the area as living spaces and to hold ngargee (gatherings for celebration) until they were driven out in the 1860s".

From the 1850s onwards "South Yarra began to be known as an affluent area, which has shaped the physical development of the suburb including large estates of the 1840s and '50s, Victorian boom-era villas, luxury flats and maisonettes that replaced mansions in the 1920s to '40s and architect-designed flats and avant-garde homes of the post-war era."

Irrespective of what results from the heritage review, properties with existing permits for substantial demolition or development outside of existing heritage overlays are excluded from interim controls.

Landowners and others will have the opportunity to make submissions during the public exhibition of this amendment.

If adopted on November 8, the amendment would be sent to the Minister for Planning for final approval. ●



▲ View of the promenade works from Princes Bridge.

Southbank Promenade works to be completed "soon"

WORDS BY *Rhonda Dredge*
COUNCIL AFFAIRS

Traders are relieved that work is finally coming to an end on the section of the Southbank Promenade in front of the Hamer Hall.

The work has created a dark tunnel for six months and a crush for cyclists and pedestrians. Speaking to *Southbank News* in early November, workers estimated that the temporary fencing would be down in the next two weeks.

The City of Melbourne has confirmed that the completion date has been moved out from mid-October until the end of November.

But traders are still disbelieving that the tilting and balustrade will be completed by then.

"It was meant to be finished a month ago," a worker told *Southbank News*.

Yosuke Katanaka, the executive chef Saké, a Japanese fusion restaurant cut off from the river by a two-and-a-half-metre-high black hoarding, said the completion date had changed continually.

"It has dragged on. They kept saying this week, then the next week," he said. "I'm sick and tired of working in a dungeon."

The new paving will widen the promenade and alleviate the bottleneck in front of the restaurants.

Stage Two of the Southbank Promenade upgrade has been postponed until after the busy summer period. ●



Southbank
Residents Association

Ever thought to join your building Owners' Corporation Committee?

Southbank Residents Association is bringing you this highly informative info session.

Have you ever considered becoming a member of your building's Owners' Corporation Committee?

If you don't know what they do, or have ever wondered what it takes to join, then this event is for you.

Date: Wednesday 23 November

Time: 6.30PM - 8.30PM

Venue: Boyd Community Hub - 207 City Road, Southbank



Julie McLean
Strata Community Association



Nicholas Abbey
Strata Community Association

Julie McLean and Nicholas Abbey from the Strata Community Association will outline what Owners Corporations do, the role of a committee member, and the different ways a person can contribute to their Owners Corporation.

info@southbankresidents.org.au
www.southbankresidents.org.au

This event is an initiative of the Southbank Residents Association (SRA).

Does the Yarra River's maritime heritage cut it?

The Lower Yarra River has maritime history in spades, but how well is it presented and interpreted for the visitor?

MARITIME

The Yarra River Business Association (YRBA) wants to know the answers and has engaged Melbourne tourism branding company The Gaibo Agency to ask the hard questions.

YRBA executive officer Tim Bracher said that there had been a lot of "investment into the maritime heritage theme at South Wharf since 2010", and there was about to be a lot more invested in the theme on North Wharf, but nobody has ever asked whether maritime "heritage has appeal to the younger and emerging visitor markets".

"Fundamentally, we need to ask whether maritime heritage is just going to be a nice visual backdrop to a modern hospitality scene or is it worth properly presenting and interpreting items of interest, plus strongly branding the western end of the Yarra River as Melbourne's maritime heritage hub," Mr Bracher said.

"There's a push to present maritime heritage as part of the Melbourne visitor experience, but we want to know if it would have any cut-through in the very competitive visitor market."

Well-known tourism identity Roger Grant from The Gaibo Agency will explore the topic as the guest speaker at YRBA's final 2022



▲ Polly Woodside, South Wharf. Photo: Tarryn Myburgh.

business luncheon on Friday, November 11.

Roger and a team of tourism professionals have been interviewing major stakeholders and interrogating key data to be able to present a clear path for the association and its stakeholders to follow.

The November 11 South Wharf lunch will be the final piece of project consultation, where guests will not only hear about key findings from the best maritime heritage precincts around the world but will also be able to contribute ideas through a questions and answers session.

The two-course lunch with refreshments is available for any business or resident to attend, and can be booked at yarrariver.melbourne/lunch ●

For more information:
Tim Bracher – 0412 502 931

YRBA launches survey to improve Southbank's hospitality offering

BUSINESS

A comprehensive survey to help improve the range and style of food and beverage on offer to Southbank residents has been launched by the Yarra River Business Association (YRBA).

The survey grows out of a key finding from a City of Melbourne survey earlier this year that found that residents are seeking more appropriate hospitality choices than are now available.

The business association is backed by the City of Melbourne in its effort to delve further into the psyche of locals, with the YRBA saying it will also help the council develop a complete picture of what local people enjoy and what they are wanting.

YRBA president Jeremy Vincent told *Southbank News* the COVID-19 lockdowns proved to Southbank businesses the 22,000-plus residential population can be a "strong underpinning market, especially if businesses are more attuned to what Southbankers want on an everyday basis".

"Rather than just provide a once-a-year dinner for a wedding anniversary, we want to present a suitably diverse range of food and beverage options, at appropriate price points, that can be enjoyed several times a week," Mr Vincent said.

"The river strip has a very strong tourism focus, but COVID has shown that putting all one's eggs in the same basket can be catastrophic as a



business model."

"In conjunction with the City of Melbourne's Neighbourhood Officer, we have designed the survey to tease-out details about leisure time activity generally in the precinct."

"It will complement the more urban design and neighbourhood planning focus of the council's earlier survey."

The seven-minute survey, produced by branding and placemaking company Right Angle, can be found at youryarra.melbourne

The survey will be open until January to give residents ample time to complete the questions and will feature key prizes including a dinner for two people on the *Spirit of Melbourne* and ten \$50 local dining vouchers, to be drawn in early March 2023.

The YRBA will use the results to produce fact sheets and run workshops in early 2023 to inform its member businesses about what is wanted by the local community.

For more information: YRBA executive officer, Tim Bracher – 0412 502 931 ●



Council to seek the community's say over much-needed dog park upgrade

WORDS BY *Brendan Rees*
COUNCIL AFFAIRS

The City of Port Phillip will seek the community's input after approving a \$140,000 plan to upgrade a popular park in South Melbourne, which locals say is currently "unsafe".

An online petition, started by South Melbourne resident Marjorie Main, was presented to Port Phillip Council's meeting on October 19, where councillors discussed ways of improving the look and use of the Eastern Road Reserve North dog park, including a controversial proposal to ditch the grass in favour of granitic sand.

According to the 450-strong petition, the condition of the park, which is widely used by the community, was "unreliable" with poorly maintained gates and fencing, while the state of the grass was also "extremely poor" and a risk to public health.

The issue was heightened after a whippet escaped the park's gates and was hit by a car on Eastern Rd in August last year with residents imploring the council to act.

Councillors voted at the meeting to consult with the community in which it would consider the future use of the park, however, it rejected a proposal to upgrade the park's fencing "at this time", with council officers to conduct an "assessment of fencing for fenced dog parks in the development of the off-leash dog guidelines".

The council will also review its maintenance schedule and ensure it's adequate for the high use of the park, which is also frequented by residents of Southbank Village, while community consultation on whether to replace the park's grass with granitic sand would also be considered.

However, the council's interim CEO Chris Carrol said given the challenges around overshadowing trees and people frequently using the park, the grass would struggle to grow.

"There is opportunities potentially at other dog parks in other areas which are larger ... which have better natural features to support grass," Mr Carrol said, but added, "in this particular case our conclusion is that trying to make this a grass facility year-round is going to be very expensive and probably not very effective."

Cr Heather Cunsolo said it would be a shame to lose the grass and the "weather is on our side for the next few months" but she acknowledged the Park St end of the reserve "looks very tired" and believed using granitic sand would be a "good update".

Ms Main, the head petitioner, said she was appreciative of the council being "so responsive" to the community's concerns, but she hoped "nonetheless that they reconsider their decision to leave the fence and gates as they are" with double gates being most preferable.



▲ Marjorie Main is happy that the City of Port Phillip is listening to community concerns about the state of the Eastern Road Reserve dog park.

"I'd love to see the park be a place that reflects that pride. It could be a really beautiful space," she said.

"This is the only fully-fenced dog park in the City of Port Phillip, it meets a lot of pet owners' need. Dogs and people are diverse and have different accessibility requirements, so I hope the council will be proactive and reconsider their stance on the fence and gates, especially as this was at the core of our petition."

In August, Ms Main said she planted new grass seeds in a muddy section of the park which is "lovely and green now and the dogs love it".

"Increased vegetation, especially natives, would also be amazing and hopefully make the park more attractive to all residents and passers-by, as well as really suit the South Melbourne leafy aesthetic," she said.

Ms Main conducted her own community survey in which 57 per cent of respondents said they'd like the park to stay grassed, while the remainder said they'd like a combination of grass and sand.

The council's community engagement will also consider additional vegetation and a play component for dogs while the operating hours of Eastern Reserve North Dog Park and its enforcement would be considered as part of the dog off-leash guideline development. ●

ATTENTION 3006 RESIDENTS

Don't forget to regularly check your copy of the 2022 Southbank Directory for a range of discounts and special offers especially designed for you.

How about 30% off at *La Camera*, complimentary coffee at *Common Man*, 20% off at *Bluetrain*, 20% off at *Time Out Fed Square* and 20% off the *Spirit of Melbourne* restaurant cruise?

CHECK THE DIRECTORY FOR THESE AND MANY MORE



SOUTHBANK
Directory

Supported by

yarrariver.melbourne

Yarra River Business Association Inc

ADVERTISEMENT
Your City of Melbourne community update

GRANTS HELP NEIGHBOURS PRESERVE HISTORIC STREETSAPES

Passionate Melburnians are making-over their heritage places to help preserve beautiful streetscapes for generations to come.

Heritage plays a key role in making Melbourne a place where people love to live, work and visit.

To preserve the city's unique character, we offer heritage grants to help people complete restoration projects at residential, community and commercial properties across the municipality.

We recently awarded two heritage grants to neighbours on McCracken Street in Kensington.

Ian Porter restored floor tiles on his verandah, and Kensington Neighbourhood House replaced the stained glass on its front-door sidelights.

A common feature on McCracken Street, the sidelights cast a beautiful crimson glow into homes during summer sunsets.

'I was pleased to be able to access a grant to restore our verandah and make it safe, as some of the tiles were broken. The project has been well worth it,' Ian said.

'When you live in a heritage home, you can modernise the inside to make it liveable, but exterior restoration helps preserve the character of the streetscape.'

Kensington Neighbourhood House runs educational, wellbeing and social events to bring diverse local people together. Manager Rebecca Smith said restoration helps make the community hub a welcoming place.



Ian and Rebecca chat over the fence at Kensington Neighbourhood House on McCracken Street

'The heritage grants program gave us the opportunity to repair our sidelights, which were cracked and broken, to help restore this beautiful building to its former glory,' Rebecca said.

'Projects like this help make the Kensington Neighbourhood House a welcoming and friendly place that the community can be proud of.'

Ian and Rebecca have both lived in Kensington for decades and love the character and community of the suburb.

'Kensington is a very historic area. We love walking our dog, Lucy, down along the old stock route,' Ian said.

Looking to the future, the neighbours will continue to take care of their piece of local heritage.

Kensington Neighbourhood House recently replaced its slate roof, which has made it watertight and ready to face another hundred years.

Roof works are on Ian's wish-list too, and he's also planning to paint his front door to continue to maintain his home's facade.

About the heritage grants program

First established in 1988, the Melbourne Heritage Restoration Fund is our local fund for heritage grants, held within the Victorian Heritage Restoration Fund. Grants are administered by the National Trust of Victoria.

How to apply for a heritage grant

Have you been thinking about a project that would transform your heritage place? A little restoration work can go a long way to transforming your building and keeping it in great condition for years to come.

To be eligible, your property must be within a heritage overlay and located in the City of Melbourne. The works must also be visible from the public realm.

To find out more, visit melbourne.vic.gov.au/heritagegrants

More off-leash areas for our four-legged friends

If there's one thing we know, it's that Melburnians just love dogs.

For it is our fabulous loyal four-legged friends who encourage us to lead active and healthy lifestyles, and importantly offer companionship like no other.

Since 2018, the number of dogs registered within the City of Melbourne has increased by a huge 44 per cent from 3292 to 4750.

That includes a 20 per cent increase in the past two years alone.

As the number of dogs and dog owners in our city increases, so does the need for everyone to have access to safe and secure spaces in which to frolic.

Council is doubling the number of off-leash dog areas within the municipality.

Over the coming months, there will be more than three hectares of new off-leash parkland added to the existing 16 hectares - that's five times the size of Federation Square.

New designated off-leash areas for dogs

- Eades Park, West Melbourne
- Kings Way and Moray Street Reserve, Southbank
- Ron Barassi Senior Park, Docklands
- Royal Park (Manningham Reserve), Parkville

Timed off-leash areas

- Wellington Park, East Melbourne
- Point Park, Docklands
- Riverside Park, Kensington

To ensure everyone can enjoy our parklands safely, timed off-leash access is available between 6pm and 8am from November to March, and 5pm to 9am from April and October.

Top five dog breeds within the City of Melbourne

1. Cavoodle
2. Greyhound
3. Labrador
4. French Bulldog
5. Mini Dachshund

Visit melbourne.vic.gov.au/dogwalking for details.



We're creating more off-leash parkland for our furry friends

ADVERTISEMENT
Your City of Melbourne community update

How we support food security in Melbourne

Melbourne is a famously liveable city. We're renowned for the quality of our food and world-class dining and hospitality scene.

Despite this, in 2021, about one in three residents experienced food insecurity and only 4 per cent of adults consumed the minimum recommended daily serves of fruit and vegetables, our City of Melbourne Community Indicators Survey 2021 shows.

That's why we're taking steps to make sure everyone in the community has access to affordable, fresh and healthy food.

Community Food Guide and community food map

Increasing levels of food insecurity is a health, social and economic issue.

As a council, we're focused on strengthening food relief initiatives and supporting communities to grow their own food through our Community Food Relief Plan 2021-25.

We have a history of working with the community on food security, and we'll continue to ensure those in need can access food relief.

Our Community Food Guide is a helpful resource for community agencies or anyone in the community who needs information about how to access affordable, fresh and healthy food.

We've also committed to partnering with food relief and other charities – like SecondBite – to provide groceries and meals to vulnerable residents.

We're looking into community food enterprise models, including opportunities to work with Queen Victoria Market traders to redirect edible surplus food that would otherwise go to waste.

This work will help reduce overall food insecurity to 25 per cent by 2025, back to pre-pandemic levels.

Explore our Community Food Guide and food map at melbourne.vic.gov.au/communityfoodguide to find free or low-cost meals, food banks, community gardens and cooking and growing classes near you.

Grow your own

Filled with spinach, cauliflower and kale, the crops in Melbourne's communal food gardens in Boyd, Docklands, Drill Hall, East Melbourne, Melbourne University, North Melbourne, Southbank and Kensington are thriving.

We support the Kensington Stockyard Food Garden, established in 2018, which features more than 100 square metres of growing space, an Indigenous garden and fruit forest with more than 30 trees, including figs, apples, citrus, elderberry, and other berries.

Nan Austin, chair of the Kensington Stockyard Food Garden said the growing is primarily in self-wicking beds as the stockyard is paved with bluestone.

'While we make some compost onsite we cannot meet our ongoing needs so we recently purchased two tonnes of compost from the City of Melbourne green waste program,' she said.

'We've done the sums and we're using a whopping 5000 litres of compost each year, which is equivalent to at least five tonnes of food and green waste redirected from landfill.'

As well as feeding members with fresh produce, the Kensington Stockyard Food Garden delivers kilograms of vegetables to a local food pantry to be shared with the community, and collects seeds for reuse in the future. Excess seed is shared at regular plant swap meets.

Getting creative with our food and garden organics waste

Food and the ways we produce and dispose of it has a huge impact on our environment. In fact, if food waste were a country, it would be the world's third largest emitter of greenhouse gasses.

About 45 per cent of our residential landfill bins are made up of organic waste, which ends up in landfill producing methane gas, odour and contributing to climate change.

We're taking steps to cut this in half, and achieve zero net emissions by 2040, with our new food and garden organics waste service.

Since launching, we've provided 23,000 households in the City of Melbourne with the food and garden organics service, diverting more than 1400 tonnes of organic waste from landfill.

That's the equivalent weight of 46 Melbourne trams.

We've just begun trialling the organic waste we collect as compost for our local parks and gardens in Kensington. We're also about to commence a pilot program, testing on-site food waste processing in up to six high-rise apartment buildings.

Visit melbourne.compostapak.com.au for more information.

SENSORY GARDEN A DELIGHT FOR PEOPLE WITH DEMENTIA

Enjoy nature, get your hands dirty and enjoy garden-to-plate morning teas at Kensington's sensory garden.

We've created a beautiful garden at Kensington Neighbourhood Centre where local people, including people living with dementia and their carers, can come together for a weekly gardening and social group.

A professional gardener from Cultivating Community is on hand to guide participants through optional light gardening activities designed to ignite the senses and facilitate a connection with nature.

The fun continues with morning tea, often featuring produce grown in the garden, like herbs and edible flowers.

Visits to Kensington Neighbourhood Centre's sensory garden are free, but bookings are essential.

To register, contact Healthy Ageing on 9658 9190 or email healthyageing@melbourne.vic.gov.au



Fresh produce at Queen Victoria Market

IN BRIEF

MARVELLOUS MELBURNIANS

Celebrating 20 years, the Melbourne Awards are the City of Melbourne's highest accolade, celebrating inspirational people and organisations making extraordinary contributions to our community. The awards acknowledge the contribution of 27 finalists in 8 categories: Aboriginal Melbourne – ganbu guljin, arts and events, community, hospitality, knowledge and innovation, LGBTIQ+, sustainability and urban design. Tune in to Channel 9 at 4pm, Sunday 13 November to find out who wins.

Learn more about the finalists at melbourne.vic.gov.au/melbourneawards

REPORT IT ONLINE

From graffiti to abandoned vehicles, you can report issues online around the clock. Get in touch from your smartphone when it suits you and we'll get on the case. Find out more at melbourne.vic.gov.au/contactus

ORDER YOUR FREE KITCHEN CADDY NOW

Kerbside collection for food and garden organics is now available to residents living in apartment buildings up to five storeys. Order your kitchen caddy and liners today and help us put your organics to good use. Visit melbourne.compostapak.com.au for more information.

A COMMUNITY THAT CARES

At the City of Melbourne, we are committed to bringing people together, fostering communities that connect, care and collaborate. From supporting new parents, to acting on food security and making sure our city is a great place to age, we're here for everyone. Visit melbourne.vic.gov.au/community to learn more.

COMMUNITY RESILIENCE SURVEY

Communities that are well prepared and connected are more resilient during unpredictable events. We are seeking your feedback on how we can build community resilience to disasters, which are expected to become more difficult to manage. Have your say at participate.melbourne.vic.gov.au/southbank-community-resilience

COUNCIL MEETING IN THE COMMUNITY

We're holding the second Future Melbourne Committee meeting of each month in community locations across the municipality.

We want to make it easier for people to engage with councillors and staff and shine a light on the unique needs of each neighbourhood.

This month, join us in Southbank on Tuesday 22 November at 6pm at Cliftons Melbourne – Freshwater Place, Level 18, 2 Southbank Boulevard.

For more information, visit melbourne.vic.gov.au/aboutcouncil



KEEP IN TOUCH

To stay connected with all the latest news from the City of Melbourne, follow us on social media and subscribe to *Melbourne* magazine online at melbourne.vic.gov.au/subscribe

Connect with us

[/cityofmelbourne](https://www.facebook.com/cityofmelbourne)

[@cityofmelbourne](https://www.instagram.com/cityofmelbourne)

[@cityofmelbourne](https://www.twitter.com/cityofmelbourne)



Arts Precinct

Independent theatre collaborates with Arts Centre to bring a West End smash hit to Melbourne

WORDS BY *Kaylah-Joelle Baker*

After hearing the final speech of the West End play *EMILIA* on a podcast, co-artistic director of Geelong's Essential Theatre Amanda LaBonté knew she had to bring the play to Victoria for the theatre's 20th anniversary.

As a female-led independent theatre, the play spoke into everything Amanda LaBonté and fellow co-artistic director, Sophie Lampel, stood for and they knew they needed to get their hands on it.

"We were really wanting to mark the year with something momentous and as female producers that focus on Shakespeare's work, we have always looked at gender balance and looked at Shakespeare through a female lens, and *EMILIA* just seemed to tick every box," Ms LaBonté said. "We decided to go the more modern way [of contacting British playwright Morgan Lloyd Malcolm], and tweeted her to introduce ourselves, then within half an hour she got back to us and said, 'let's chat'."

"She saw that we approached work very similarly to her, that we were doing it for the right reasons and that the play aligned with who we were and what we stood for."

Understanding the magnitude of bringing a three-time Oliver award-winning stage show to Victoria, Ms LaBonté and Ms Lampel brought on two additional co-producers Darylin Ramondo and Sonya Soares, and joint forces with Arts Centre Melbourne and Geelong Arts Centre.

"We could not be doing this without our two commissioning partners, and their support, confidence and faith in an independent theatre company has been really warming and overwhelming," Ms LaBonté said.

Created during the middle of the #MeToo era, *EMILIA* was inspired by 17th century poet and revolutionist Emilia Bassano who is known as one of the first women to be published as a professional poet.

Emilia was also often deemed the supposed "Dark Lady" of Shakespeare's sonnets, but for Ms LaBonté it was Emilia's ability to never take no for an answer that speaks volumes.

"We are all faced with adversity in our lives in a variety of ways, but instead of whingeing about the problems she faced, Emilia just found a way to continue and make a change, and we can all aspire to be more like that because I think it is really easy to just complain but she didn't," Ms LaBonté said.

"She just weaved her way through the world, in a world that didn't respect women as writers, and particularly women of colour as writers at that point in time."

EMILIA is a mix of comedy and fury, and tackles topics



of love, loss, identity, ambition, power and rebellion.

The play is also performed by a team made up entirely of women and non-binary creatives from diverse cultural backgrounds, something Essential Theatre directors and producers regard as "exciting" and "extraordinary".

"This play is not only diverse in the involvement of women of all ethnicities, but of ability as well. Having women of all ages, shapes, sizes, abilities and ethnicities on the one stage is really exciting and unique," Ms LaBonté said.

The Australian debut of *EMILIA* is set for November 10 and will be at the Arts Centre Melbourne until November 27. ●

For more information:
artscentremelbourne.com.au



Taking it easy

WORDS BY *Rhonda Dredge*

The last song they played before the encore was *Hope for a Generation*.

The sun had gone down on the Sidney Myer Music Bowl.

Vocalist Joe Dukie had been looking ultra-cool in his newboy cap and dark glasses.

But towards the end of the concert, he was hatless and glassless, about as flamboyant as he got.

Sometimes this mesmeric, disciplined band was so subtle you could have sunk into the grass.

The sweet vocals, the trance-like repetitive rhythm, enhanced by MC Slave on turntable, spoke directly to needy locked-down bodies.

"How are you doing now?" Dukie asked, as he supplied the medicine.

Fat Freddy's Drop was playing in the Melbourne International Jazz Festival, and it was just what the doctor ordered.

The concert was a sell-out but those with blankets were making space for the latecomers and giving up small

patches on the hilltop.

You could lie back and look at the stars and some stranger would scrunch up his jacket for a pillow.

Kindness was back in a big way as the band massaged bruised egos and tight shoulders.

For those who wanted more there was Chopper Reeds, larger than life sax and horn player, who alone fired up in a physical kind of way.

His horn was sweet, his portly salutations a nod to pure pleasure and letting go.

There was one fancy hat in the crowd, but the rest was pure chill against a call to bloom.

The lack of chat and greetings from this more-than-cool band from New Zealand was refreshing.

There was nothing *about* soul; this concert was soul.

The message was in the lyrics and there was no mistaking it: the only hope for this generation is taking it easy.

Fat Freddy's Drop, Sidney Myer Music Bowl, Melbourne International Jazz Festival, October 15. ●

BUSINESS

Jam-packed 2023 Melbourne Symphony Orchestra program announced

WORDS BY *Jemma van Zaanen*

The 2023 Melbourne Symphony Orchestra (MSO) program of nearly 200 events has been announced this week, released by the chief conductor Jaime Martin.

Audiences can expect to see 36 Australian works and 86 guest soloists and conductors, including 26 debut appearances, throughout the year.

The focus of the program will be on "the majesty of nature through music", and the celebration of Russian composer Sergei Rachmaninov's 150th musical anniversary year. Audiences will also be invited to enjoy violin concertos by global-leading soloists.

Half of the guest artists on the main stage are female and 10 out of 17 MSO commissions are composed by women, according to the MSO.

To start off the year, the MSO will present the Season Opening Gala *Zenith of Life*, featuring the soloist in residence Siobhan Stagg performing Richard Strauss's *Four Last Songs*.

Australian MSO composer in residence Mary Finsterer will then premiere her new work *Mysterium I* at the gala.

Mr Martin said he was thrilled to be able to release the 2023 program.

"Each day that I work with the MSO, I am genuinely inspired and invigorated by the passion and professionalism of the players and the organisation," he said.

"I can't wait to share this excitement and energy with audiences across Victoria during the



▲ *Melbourne Symphony Orchestra.*

magnificent 2023 season."

The Sidney Myer Free Concert Series will return later in 2023, with Johannes Fritsch con-



Photo: Laura Manariti

ducting the MSO in *A Tchaikovsky Spectacular*.

The Free Series will continue with the principal conductor in residence Benjamin Northey

taking the lead for *Mosaics*, a celebration of Melbourne's diversity which will feature Melbourne-based contemporary artists.

Mr Northey will return for Carl Orff's *Carmina Burana* featuring the voices of the MSO Chorus and accompanied on piano by the winner of Lev Vlassenko Piano Competition, Hannah Shin.

Next year's program will mark 20 years from when Mr Northey first conducted the MSO and 20 years of the artist development program with The Cybec Foundation.

These will be celebrated when Mr Northey conducts a special performance at the Melbourne Town Hall in November 2023. There will also be special showcase at the start of the year for the Cybec 21st Century Australian Composers program.

Managing director Sophie Galaise said the 20-year legacy was an inspiring success story for both.

"Next year, two wonderful concerts will celebrate the enormous legacy of a generous and progressive donor and the extraordinary career of Ben, our much-loved principal conductor in residence," Ms Galaise said.

The MSO will also tour across Victoria throughout 2023 and continue its work with schools, and extend its audience through "digital channels". ●

For more information:
mso.com.au

PROFILE PICTURE

PHOTOGRAPHY STUDIES COLLEGE



The emerging photographers of PSC showcase their final projects

WORDS BY *Kaylah-Joelle Baker*

As the end of the year approaches, the time to bid farewell to studying at the Photography Studies College has come for many students, but not before they celebrate their efforts with a graduate exhibition.

PSC's 2022 graduate exhibition, *Morii: The Next Generation of Photography*, is a highly anticipated event for the third years at the college, and a time to showcase their final projects.

Held in Fitzroy at the Centre for Contemporary Photography, 30 students' works lined the walls upon its launch on Saturday, November 5, and will be in place until November 13.

All differing in their approach and "desire to capture a fleeting moment", as the title of the exhibit alludes to, the students' works offer a glimpse into the minds of emerging photographers.

"There's a value in audiences getting a fresh and new insight into contemporary photography

through students exhibiting in the space," PSC lecturer and practicing artist Gemma Rose-Turnbull said.

Graduating PSC student Blake Dearman also noted the importance of this exhibit in giving students a platform.

"It's a really good opportunity to see what emerging photographers are thinking about and what they are trying to do," he said.

"In one respect, we all really look up to more established artists, but we [students] also have things we want to do and try, and we hope that might be something other people will be interested in seeing."

As well as producing the work to go within the gallery and helping to set up the exhibition in the days prior, students were also in control of fundraising enough money for it to go ahead.

After holding a successful fundraising auction, with donated works from local artists and photographers, and being sponsored and supported by Avalon Airport, students were able to spend the last couple months knowing the event was a go-ahead.

It's something Mr Dearman said "feels really good", as he spent time in the gallery prior, setting up his "abstract" work of prints and a video with a sound piece attached, all of which involved the use of a range of different technologies from photography to artificial intelligence.

While all the students spent their last year working on their final projects, they were divided into three streams of fine art, commercial and documentary.

Some students used the streams as a chance to explore a multitude of practices and topics, and other students like Emma Stapleton have had their hearts set on one particular area for a while.

"There is just so much variety in the graduate year. I am majoring in commercial, but I am doing birth photography, which is probably inspired a lot by my mum who is a midwife," Ms Stapleton said.

As graduates of 2022, many of the students started the course during lockdown, and after being restricted with when and how they could exhibit their work, the opportunity to have their work displayed has not gone unappreciated.

"It's an incredibly important event. The time and effort we have put into this course, and even the grad show, everyone has worked so hard so their work can be as good as it can be," Ms Stapleton said.

"We are just so excited to show everyone and have all our family come down. Some families from overseas are also coming. So, it's pretty exciting and a big deal for all of us."

The Centre for Contemporary Photography is located at 404 George St, Fitzroy, and the exhibit will be open from 11am to 5pm until November 13. ●



▲ Third year students pose outside the Centre for Contemporary Photography to celebrate their efforts in the PSC's 2022 graduate exhibition, *Morii: The Next Generation of Photography*.

For more information:
psc.edu.au



Image by Dora Wu



PHOTOGRAPHY STUDIES COLLEGE

STUDY OUR BACHELOR OF PHOTOGRAPHY IN 2023

You'll get a tertiary qualification that gives you so many opportunities and the best career start!

Learn strong technique in practical classes

Great student to teacher ratio

Learn with photography industry professionals

World class photography facilities

Find out more

✉ study@psc.edu.au or ☎ 9682 3191

PSC.EDU.AU
✉ study@psc.edu.au

☎ 9682 3191



Photography Studies College (Melbourne)
37-47 Thistlethwaite Street
South Melbourne VIC 3205

Photography Studies College (Melbourne)
is a division of Photography Holdings Pty. Ltd.
ACN 0016 525 306 | ABN 69 860 041 097
CRICOS Provider No 00257G | TEGSA
Provider No 12200 | RTO Code 0111



Explore a more positive and interactive future of retail with BETA

WORDS BY *Kaylah-Joelle Baker*
ARTS & CULTURE

BETA by STH BNK is reimagining the future of physical retail and its contribution towards positive changes through its latest “engaging and entertaining” talk series NEXT X NOW.

The next panel discussion in the series will take place on Friday, November 11 at its Hanover House location, around the important topic of retail design for positive social change, and the invitation is extended to all who want to explore the creative space.

BETA is essentially an experimental space and, according to general manager of retail and tenant partnerships at property developer Beulah, David Monaghan, the name was about “experimenting, testing, trialling, and prototyping ideas”.

The space has two vitally important floors that are based around the concept of reimagining a future outside of traditional brick and mortar limits and playing with these ideas in a playful and immersive way.

The ground floor is occupied by the Future From Waste Lab, which is in collaboration with a number of sustainable brands such as luxury fashion brand KITX. It is an educational workshop space where brands come and work with an on-site team to create limited edition new collections out of second-hand clothes, and use “waste as a resource”.

Level four, which holds the much-anticipated talk series, also has a workshop space, an Atelier Open Studio, event space for hire, and a little retail pop-up area that “promotes products made by the artisans and designers” on site.

While the creatively interactive space, which was transformed from the inside by Sibling Architecture to the outside by artist Atem, is ultimately an explorative space, instilled within its team is a deep drive for conversation and change.

Open since early 2021, the building is the result of an expansive research project Beulah conducted a few years ago with The Future Laboratory in London and BlueRock in Melbourne.

With Beulah soon to embark on its \$2.7 billion STHBNK by Beulah development on the island site incorporating the current Hanover and BMW showroom buildings, Mr Monaghan said BETA had also been designed to share an insight as to what could be expected in what will be Australia’s tallest mixed-use development.

“It was all about where the physical retail space was going and needing to go in Melbourne and Southbank in say six years’ time, and what does it need to look like from a landlord’s perspective,” Mr Monaghan said.

“In my opinion it is not about being a traditional shopping centre, it’s thinking about space in a very different way that is relevant for a younger generation that will dominate society and the shopping environment in the future.”

“This demographic group wants different things in their life, [and] so sustainability, flexibility, experiences, storytelling, supporting brands focused around circularity, repurposing and recycling is all very important for them.”

As opposed to thinking of the shopping experience as one bound to the traditional model



of being very transactional and profit based, BETA is showing examples of what more can be done by everyone.

“Part of the future of retail is that brands should be contributing part of their profits towards positive social change, and then by [customers] going into a future retail space with a potential brand they align themselves with and buying something from that store or experiencing something in that store, they are then participating in contributing positively towards a better world,” Mr Monaghan said.

“And then from our perspective [as landlord and developer], saying well maybe the role of the landlord and developer needs to contribute positively towards society and the planet as well, as opposed to just profit for-profit sake.”

The mindset of an all-round perspective change is how through the casual, yet informative talk series, BETA hopes to see further engagement with the surrounding community.

While the discussion starts at 6pm, the NEXT X NOW series offers a night for like-minded locals to come together prior to the official start time, to share in a complimentary wine or beer, listen to music, walk through the space of the fourth floor, and chat to the on-site Atelier residents.

“I’d love to see BETA as a really local community place to come to for the Southbank residents, and something to be proud of, because it’s creative, innovative and thinking about the

future,” Mr Monaghan said.

“The talk is about the rise of brands thinking about how they can improve society, and it’s about reassociating yourself with brands that are playing a role in improving society and the planet.”

The main theme of the discussion will be explored by four industry figureheads, with a time for questions to be asked and answered.

The next talk in the NEXT X NOW series is around the rise of wellness with a number of leading wellness experts, and will take place at the same time on Friday, November 25, with tickets also available on the website.

In addition to the talk series, BETA also has an upcoming papermaking workshop on November 25, and a zerotag workshop on November 27 which will explore the complexities around sustainable packaging and look at new developing ideas.

All events will take place at the Hanover House, which is located at 158 City Rd.

For more information about the talk series, visit sthbnk.com/event/nextxnow and to see all the upcoming events, including the workshops mentioned, see below ... ●

For more information:
sthbnk.com/events



Attack in Southbank leaves man with life-threatening injuries

WORDS BY *Brendan Rees*
CRIME

A man has been left with life-threatening injuries and two men with facial injuries after an assault in Southbank on October 30.

Police have been told two groups of men appeared to argue as they were leaving a bar along Riverside Quay about 12.40am.

“As the men spilled out onto the promenade footpath three men appear to have been set upon by two men, who began punching into the trio,” a Victoria Police spokesperson said.

A 25-year-old man from Springvale was struck heavily to the face before he fell and hit his head on the ground.

The two other men, aged 24 and 25 from Keysborough and Cheltenham, received injuries to their faces.

“The pair who appeared to be the aggressors and involved in the assault fled the scene,” the spokesperson said.

A 26-year-old man has been charged with affray, recklessly cause serious injury and recklessly cause injury in relation to the incident after police executed a search warrant at a residence in Altona Meadows on November 4.

Melbourne Crime Investigation Unit detectives are investigating and have appealed to witnesses to come forward.

Just hours after the incident, police were called to a brawl in the CBD in which an alleged stabbing left one man dead.

Police were called to Bourke St about 5.45am after reports a group of people had been fighting.

Two men suffered stab wounds and were taken to hospital in a critical condition.

One of the men, who is yet to be formally identified, later died in hospital while the second man remained in hospital.

A 19-year-old Broadmeadows man was arrested at the scene for affray and continued to assist police with their enquiries.

At the time of publishing, police said no arrests had been made in relation to the fatal stabbing.

Homicide Squad detectives are investigating with the exact circumstances surrounding the incident yet to be determined.

Anyone who witnessed or have information relating to the Southbank or CBD incident are urged to call Crime Stoppers on 1800 333 000. ●



Brendan Rees
JOURNALIST
BRENDAN@HYPERLOCALNEWS.COM.AU

St Johns
Southgate

Every Sunday
9am Worship

Check our website for updates

20 City Road Southbank Telephone 9682 4995 www.stjohnssouthgate.com.au

SAFETY AND SECURITY

Personal safety on a night out

With the warmer weather upon us (finally) there has been a marked increase in night-time activity along Southbank and Crown Promenades. The activity levels are regularly exceeding pre-COVID levels with a spike in activity on Saturdays.

WORDS BY *Southbank Police Station Commander Snr Sgt Alex O'Toole*

Are you planning a night out in Southbank with friends? Here are key

safety tips to remain safe when out and about enjoying yourselves:

- **Plan** your night
- **Drink safely** and within your limits
- **Take care** of your friends

Plan your night:

- Charge your phone and take a portable power bank with you.
- Take your ID.
- Leave valuables at home or at your accommodation.
- Plan your transport to and from the venue or nominate a designated sober driver.
- Write down your friends' phone numbers, in case you lose your phone.
- Tell someone where you are going and when you will be home. Tell them if your plans change.

Drink alcohol safely:

- Eat before you go out. Eat while

you are drinking.

- Drink within your limits. Space out alcoholic drinks with non-alcoholic drinks.
- Never mix alcohol and drugs.
- Never drink alcohol and drive. Do not get into a car driven by somebody who has been drinking alcohol.
- Never accept a drink you haven't seen the bar staff pour.
- Don't leave drinks unattended and keep an eye on your drinks. Remember: even soft drinks can be spiked.

Take care of your friends:

- Walk away from conflict or dangerous situations. Take your friends with you. Do not retaliate or allow yourself to be provoked.
- Stay with your friends. Do not get isolated.
- Do not leave friends alone with somebody they've just met.

- Recognise when a friend has had too much alcohol to drink and encourage them to slow down.
- Never leave a drunk person alone. Seek help from venue staff or sober friends if you are worried about someone.
- If someone passes out, hits their head, or gets punched, call for an ambulance on Triple Zero (000).

If you feel unsafe, what should you do?

- Protective Services Officers (PSOs) and Police Officers are on platforms and trains until the last train.
- You can notify police of unwanted sexual and anti-social behaviour on public transport by texting "STOPIT" to 0499 455 455.
- If you need immediate police attendance, call Triple Zero (000).

- If you are travelling home by yourself, ring a trusted person and talk to them until you are safely home.

Southbank Police hope everyone and their friends enjoy everything Southbank has to offer safely. ●



Senior Sgt Alex O'Toole

STATION COMMANDER AT SOUTHBANK POLICE STATION

SOUTHBANK-UNI-OIC@POLICE.VIC.GOV.AU

SOUTHBANK RESIDENTS' ASSOCIATION

A huge month ahead



What a month Southbank Residents Association (SRA) has for our community this month! We have a number of events this month which I encourage our whole community to get behind.



Firstly our "Meet the Candidates" event to offer our community the opportunity to ask the hard-hitting-questions to the candidates for the upcoming state election on November 26. SRA has been holding these events for 20 years and they have always been a great night.

This event will be moderated by

Stephen Mayne, a Walkley Award-winning journalist and past City of Melbourne councillor. Stephen specialises in activist journalism so he will certainly hold them to account.

We will be holding two events to give all candidates an opportunity to address the community – Tuesday, November 15 and Wednesday, November 16. The reason for these dates was to allow all candidates time to nominate as nominations close on November 10 at the Victorian Electoral Commission.

Tuesday, November 15 – Labor, Liberal and Greens

Wednesday, November 16 – minor parties/independents

Time: **6.30pm – 8.30pm**

Location: **Boyd Community Hub** – 207 City Rd, Southbank

The council's Future Melbourne Committee (FMC) will be held in Southbank on Tuesday, November 22 at 5pm. This is the first time the council has held such a meeting in Southbank. As usual with FMC meetings there is 15 minutes at the beginning and end for the public to ask questions. This meeting will start with a presentation on Southbank. These meetings are most informative and give a first-hand glimpse into council decision making processes.

I can't encourage our community enough to attend on this night and certainly ask any questions you may have.

Tuesday, November 22.

Time: **5pm** (refreshments), **6pm** (meeting starts)

Location: **Cliftons Freshwater Place, Level 18, 2 Southbank Blvd**

Have you ever considered becoming a member of your building's owners' corporation (OC) committee? If you don't know what they do, or have ever wondered what it takes to join, then this event is for you. SRA is holding Southbank's first information session to inform interested owners. Julie McLean and Nicholas Abbey from the Strata Community Association (SCA) will outline what OCs do, the role of a committee member, and the different ways a person can contribute to their OC. This event is an initiative of Southbank Residents' Association and we are hoping to make them regular.

Wednesday, November 23

Time: **6.30pm – 8.30pm**

Location: **Boyd Community Hub** – 207 City Rd, Southbank

Finally, don't forget the state election will be held on **Saturday, November 26.**

I was delighted to recently learn

that the council has decided to install "zebra" pedestrian crossings on Kavanagh and Balston streets. This will go a long way towards making the journey to Boyd Park so much safer.

While SRA is delighted with this news, we are frustrated with how long this took. We first started the conversation with the council on the safety of those roads/intersection pre-COVID. We were hopeful they may have implemented a solution during COVID, however that was not to be the case.

I guess it's just another example of the slow-moving cogs of bureaucracy. In any case, this is a massive win for our community – thank you, council!

November is also the month where the state government will be commencing the upgrade works on the corner of Power St and City Rd. This is also long overdue. SRA has lobbied for years to have this intersection addressed, having personally taken the Deputy Lord Mayor Nicolas Reece to this intersection to observe the dangers, only two weeks before that tragic accident. We welcome these works, but also appreciate there will be some disruption to commuters.

SRA is now well into planning for our Community Day to be held early

next year. We are in need of volunteers from across our community to assist with the planning of this massive event. If you have any interest to assist, I encourage you to reach out. It will be a great opportunity to meet some neighbours. Please email us at info@southbankresidents.org.au.

That's it for this month for now. As you can see, it is a jam-packed month. I look forward to seeing you at one, or all, of our upcoming events. Don't be afraid to say hello. ●



Tony Penna

PRESIDENT

PRESIDENT@SOUTHBANKRESIDENTS.ORG.AU



Southbank Residents Association

BUILDING COMMUNICATION AT ITS BEST!

CommVision provides a sustainable and seamless way for Managers, Council, Police and the local community to communicate with Residents.

By installing media screens in lifts and lobbies, our platform will upgrade your building and keep your Residents fully informed of:

- **Important building notices;**
- **Community events;**
- **Latest news;**
- **Local deals.**

Our touchscreens provide a fully interactive experience and are complimented with a bespoke Residential Managers portal that delivers pre-made templates for the Manager to design and schedule notices in advance. Our operating system is cloud based, enabling Management to remotely update notices seamlessly at any time of the day.

Empower your Manager today and contact our team on info@commvision.com.au **03 9863 7552** to find out how you can upgrade your building.

Warm Regards,
Your friendly neighbourhood Communication Platform Provider

COMMVISION

CommVision.com.au

FEDERAL MP

Closing the gender gap

We have made huge progress on gender equality in my lifetime – including in politics, where we now have a cabinet that consists of 50 percent women. However, there is still much more that needs to be done.

Too often, we see women held back, disadvantaged, or discriminated against. Gender inequality is holding us all back.

In Australia, the gender gap persists. Women continue to shoulder the majority of unpaid work and caring responsibilities. They are more likely to be in part time, casual or low-paid work.

Gender inequality is also a key factor underpinning high rates of family and domestic violence.

Unfortunately, for too often women's voices were not heard by the former government.

It wasn't too long ago that the Minister for the Status of Women was Tony Abbott and there was just one woman in the Cabinet room.

But I'm proud to say that gender equality is at the heart of the Albanese Labor Government, and it's at the centre of our first Federal Budget announced just a few weeks ago.

In this budget, we are delivering cheaper childcare for 96 per cent of Australian families.

Making early education more affordable, reduces barriers to women's workforce participation and supports children's development. It's a win-win.

We are also delivering the biggest boost to



But I'm proud to say that gender equality is at the heart of the Albanese Labor Government, and it's at the centre of our first Federal Budget announced just a few weeks ago.



paid parental leave since the scheme was introduced by Labor in 2011.

Paid parental leave will now be extended to six months and we are making it fairer and more flexible so that parents can do what works for them.

Everyone deserves to live free from violence.

We know that inequality is a key driver of gender-based violence through unequal distribution of power, resources, and opportunity.

This is why Labor will make a record Commonwealth investment of \$1.7 billion

over six years to end violence and ensure that women and children are safe at home, in the community and at work.

This includes 500 frontline community workers, 4000 new homes for women fleeing violence and older women at risk of homelessness and \$100 million additional for crisis and transitional housing options for women and children.

We also will fully implement the Respect@Work report, including the funding, properly, of working women centres in every state and every territory. And we'll get wages moving, including for feminised industries, which are some of the lowest paid sections of the entire workforce, including aged care workers, cleaners, and childcare workers.

I know this is just the beginning, but these reforms will go a long way in supporting women's economic security, giving families more choice, and strengthening our economy and society.

I care about equality not just as a father of a daughter, but because I know that equal and fair participation in all aspects of society is the best thing for our community and economy, and it is frankly the right thing to do. ●



Josh Burns

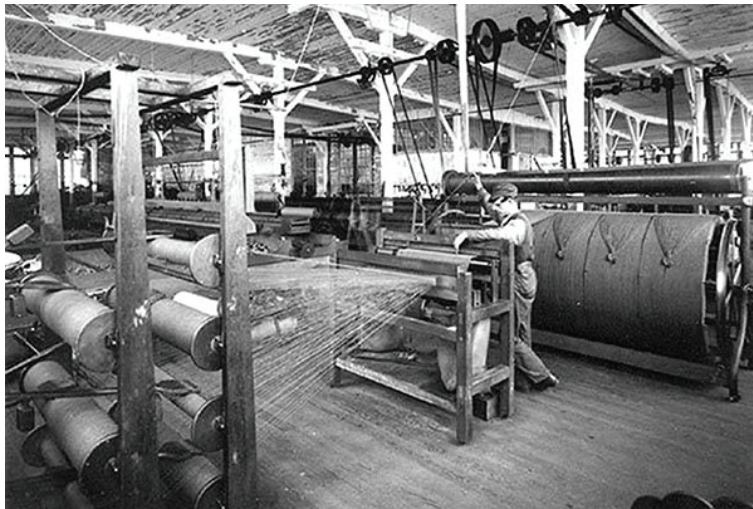
FEDERAL MP FOR MACNAMARA

JOSH.BURNS.MP@APH.GOV.AU

HISTORY

Trouble at the mill!

In the pre-WWII years, the area now known as Southbank contained a number of knitting mills that fuelled the growing Australian domestic market for textiles.



The major industry of textile manufacturing was largely based on the conversion of fibre into yarn and then into fabric, which was then dyed or printed and fabricated into cloth which was then converted into useful goods such as clothing, household items (such as mattresses, towelling, bedding), upholstery and various industrial products.

Examples were Willmott, Laconia, Butler, Lion Rolling Mills, etc., and United Mills, located on the corner of Sturt and Coventry streets (now occupied by Southside Towers). They

were tough places to work for the predominantly female workforce, with noise and dust, the ever-constant risk of fire and accident, even death.

The equipment was heavy duty,

imported from Europe, so a fire could result in huge financial losses. They could also be dangerous to operate.

In 1934, a young mill worker at the United Woollen Mills' factory slipped as he approached a machine

and was dragged into it by the arm. After a protracted struggle, he was freed and taken to hospital but unfortunately died the next day.

The workers, many of whom were locals, relied on unions and awards to represent their interests, with one site (such as United Mills) covered by a number of unions, including the Textile Workers Union.

In the pre-war years, there were continual disputes between the management and the unions. The mill workers operated under the Textile Workers Award and were paid under the piece work system, with wages linked to their output.

Typical was a rate of 25/- for each piece of cloth of 75 yards. Their union preferred the piece work system to payment by time and in 1938 the weavers at the mill were presented with an option for payment that provided for time rate rather than piece work. This was regarded by the weavers as an attempt to enforce

wage reductions and about 50 weavers walked off the job.

Then it was off to the Trades Hall for compulsory negotiations. But there was a flow-on – the weavers were regarded as “key” workers and all parties quickly realised that the rest of the factory workers (about 150) would soon be drawn in if it was not resolved quickly.

Fortunately, it was, but other strikes in the textile industry were often protracted. ●



Robin Grow

PRESIDENT - AUSTRALIAN ART DECO AND MODERNISM SOCIETY

ROBINGROW@OZEMAIL.COM.AU

Your Federal MP for Southbank.

We're here to help. Please get in touch if you need assistance.



Josh Burns MP
FEDERAL MEMBER FOR MACNAMARA

joshburns.com.au

josh.burns.mp@aph.gov.au ✉

(03) 9534 8126 ☎

219 Barkly St, St Kilda VIC 3182 📍

📱📺📷 joshburnsmp



Making for a more sustainable festive season

The year is fast coming to an end, bringing with it various events and celebrations. You may be thinking about how to make them more sustainable. This is an ideal time to ask yourself, "can I reduce, reuse, repair or recycle as I participate in various events and celebrations?"

WORDS BY *Maria Tarrant*
SOUTHBANK SUSTAINABILITY GROUP

For example, if you need to buy gifts, look for gifts made from recycled materials and locally sourced. Visit the many local Op Shops as a source of goods to be repurposed. Look for alternatives to battery-operated toys. Such an approach is not only good for the environment, but can be a lot less expensive.

As the year comes to a close, changes are also afoot at the community garden at the Boyd Community Hub. Over the next couple of months developers will be moving onto the site at the corner of Kings Way and Kavanagh St which includes the basketball court and rear orchard garden behind Boyd.

As a result, we will lose access to the rear

garden space. We will have to scale back our community garden as the council is not able to provide an alternative location.

We have been in discussions with staff from the City of Melbourne about this situation. The council is arranging for the relocation of many of the smaller planter boxes to the front of the Boyd Community Hub. We will be able to continue to plant these with plenty of vegetables and herbs in time for summer.

We are also in discussions with council staff about how best to progress the community composting project Southbank Sustainability Group is to undertake with financial assistance from the council. With the arrival of the developers, the sites initially chosen for the composting equipment will no longer be available. Once arrangements are finalised, we will post an update on the Southbank Sustainability Group

Facebook page.

Southbank Sustainability Group will be one of the many community groups participating in Southbank's first ever Very Merry Friend-Mas event to be held on Saturday, December 10 from 11am to 3pm at Boyd. The day is being organised by Southbank3006 in partnership with City of Melbourne for all Southbankers. There will be plenty of fun events throughout the day for all ages.

The Southbank Sustainability Group continues to meetup fortnightly on Saturday, November 3 and 19 between 10am and noon for some gardening, food harvesting, conversation and planning for 2023. These meetups are open to all.

About the group

Southbank Sustainability Group is a solution-focussed community group of Southbank residents working to bring positive change in sustainability practices. Reach us at southbanksustainability@gmail.com or [facebook.com/SouthbankSustainabilityGroup](https://www.facebook.com/SouthbankSustainabilityGroup).

If you are interested in getting involved with Southbank Sustainability Group, send us an email or come to one of the upcoming meetups. ●

SOUTHBANKER

Southbanker launches travel memoir after being swept up in the chaos of COVID

Janine Phillips was enjoying a dream trip to Europe when the world went into COVID lockdown. The result: a life-changing experience that would turn into a travel memoir.

WORDS BY *Brendan Rees*



▲ Janine Phillips with her new book *Wanderlust and Misadventures*.

At the end of 2019, Janine Phillips packed up her life to travel abroad for an extended period. She had been an avid traveller all her life and this was another experience she couldn't wait to explore, while also being a gift to herself to celebrate her 50th birthday.

But when the full catastrophe of the COVID-19 pandemic emerged, including global lockdowns, rising infections and mask wearing, Janine suddenly found herself ill and isolated.

She was only the second person in Lapland, Finland to get COVID, which was so novel at the time that Channel 10's *The Project* interviewed her while she was isolated in a cabin in a tiny snow-bound town in Lapland.

Returning to Australia was equally unique, with an "endless number of nail-biting flight cancellations and diversions", Janine told *Southbank News*.

She eventually settled in Southbank in 2020 where she penned *Wanderlust and*

Misadventures to explore our collective experience of COVID, the Melbourne lockdowns, and its renewed hope for the future.

The self-published memoir was not something she had always planned but on reflection she said the rewards were "lifechanging and therapeutic".

"I started writing in my travel diary when I started the trip in December 2019. As I travelled, I continued to write in my diary, explaining what I was seeing, and feeling, at the time," she said.

"By the time I was in the chaos of COVID I had to write my feelings out on paper as a way of dealing with it. By the time I returned to Melbourne, I was feeling really down and incredibly lost."

"Writing became part of my healing. Eventually, I found a writing coach who helped

me transfer my diary into a memoir. Then a few editors who supported me as I crafted each chapter. All up it took me almost three years to write and self-publish."

Janine said the book captured the panic during the early days of COVID as well as the shock of realising the "old ways of travelling and living so freely were being closed off to us". "Because the story is focused over 2020 and 2021, I also explain how I felt living in Melbourne during so many lockdowns. It's a roller-coaster ride with some light and hope in there too," she said.

"It's also a bigger story about how women navigating their 40s and 50s can create a new kind of community to support them in this next phase of life."

Of course, the book also tells of Janine's time moving to Southbank, getting her cheeky toy poodle, Foxy (which they are regulars at Gordon Espresso café) and making new local friends, which "were key to me surviving the challenges of the time".

Wanderlust and Misadventures is on sale now via Janine's website.

As part of Janine's philosophy to make a meaningful difference, \$1 from each book will be donated to StreetSmart [streetsmartaustralia](https://www.streetsmartaustralia.com). ●

For more information:
missmeaningful.com.au

BOOK REVIEW

A wild heart beneath

Hydra is a new novel by local author Adriane Howell that should appeal to apartment dwellers with a country property down the coast.

WORDS BY *Rhonda Dredge*

This is a satisfying tale about a city dweller who sheds a few layers to live a more authentic life close to nature.

Unfortunately for Anya, the main character of the story, the transition is not that smooth.

The shack she randomly chooses for her escape is wilder than expected and there are more demons in her bit of coastal reserve than in any post-it note squabbles at work.

The novel, with its setting next to a naval base on the peninsula, buys into the post-lockdown exodus of workers out of town to less commercial places.

But where Anya has been seeking solace after a draining marriage break-up, she discovers how susceptible she is to strange occurrences at night and howling gales.

Her struggles, rather than giving her a new sense of proportion, force her to face up to the "beast" within.

Hydra is a Gothic tale that should appeal to those seeking more from life than being a loyal employee and wife.

A bandaged hand and broken tooth are the physical signs of Anya's unleashed spirit as she deals with her humiliations.

Geoffrey Browne Auction House is the setting for her dramatic return to Melbourne where she steals a 1949 prototype chair under the nose of her rival.

The novel raises questions about the frailty of 21st century urban culture and the summary treatment of employees prior to the lockdown.

Ambition is a poor substitute for love but the only thing on offer for Anya and her rival, "a fraudulent aesthete", who compete to avoid "collectibles" in favour of "mid-century".

The early scenes at Geoffrey Browne are brilliantly described, down to the fibre of Anya's blouse and her first-person patter is dark and amusing, the familiar voice of the chick lit protagonist as she breezes through life's vicissitudes.

Her portraits of co-workers are wicked and her zeal to procure signature pieces, known in the trade as *Prima*, is without bound.

The reader is rapidly drawn into the amusing cynicism and petty battles of the antiquarian world, and the lengths the industry goes to procure important deceased estates.

But when Anya is dismissed, the coin flips, panic sets in, her voice loses its certainty, desperate measures are adopted and the storyline is not as cohesive, with a one-night stand and a car accident glossed over.

This is a content-driven novel with a sophisticated overlay of antiquarian jargon that hides a wild heart beneath.

Hydra, Adriane Howell, Transit Lounge, 2022. ●



Buying or selling?

Redeem your \$220 conveyancing voucher

Settle Easy is for anyone buying or selling property and is home to Melbourne's best property lawyers and conveyancers. With nothing to pay upfront, you'll only pay \$880 inc. GST (valued at \$1,100) plus disbursements upon settlement.



To redeem this voucher, simply scan the QR code to fill out your details. Redeem now and use anytime over the next 12 months.



State Election – representing vertical villages?

One in four Victorians live in residential strata – but are our vertical villages on the election agenda?

Multi-owned dwellings, or residential strata, is the way 1.6 million Victorians now live. This includes those who live in townhouses, “walk-ups” and our own high-rise vertical villages.

And, as we well know, state government regulations and policies daily impact upon how we vertical villagers live our lives.

Front and centre of this is Consumer Affairs Victoria (CAV). As part of the Department of Justice and Community Safety, one of CAV’s responsibilities is the administration of the *Owners’ Corporation Act 2006*. It is this legislation and associated regulations which defines the scope of what owners’ corporations (OCs) can – and cannot – do.

For instance, this is where limitations are placed upon an OC’s authority to manage short-stay accommodation businesses operating within their residences. This is also the source of restrictions regarding an OC’s ability to improve common property.

In a nutshell, current regulations aim to maintain the status quo which, regrettably, often has the effect of impeding sustainability

improvements, as these initiatives typically involve a change of use for common property (e.g. installation of solar panels on facades or rooftops).

The Victorian Government’s approach contrasts with path taken in NSW, where recent legislation – *Strata Schemes Management Amendment (Sustainability Infrastructure) Bill 2020* – has changed the approval requirements, making it easier for OCs to install “sustainability infrastructure” on common property.

There are many other “sore points” for our vertical villages but perhaps most disappointing is our non-inclusion in state government schemes, such as energy efficiency programs which remain primarily aimed at “houses”, leaving out our strata “homes”.

This lack of appreciation for residential strata was apparent in a recent meet the candidates event hosted by Residents3000. This event saw no mention of any issues specifically related to high-rise living, with attendees revealing their frustration through comments such as “don’t they know who they are talking to and how we live?”

There is one group which is seeking to make strata living an election issue.

This is the Strata Community Association Victoria SCA (Vic). It is the peak member-based association for service providers to Victorian OCs. Its membership includes OC managers and

facility managers, along with industry suppliers such as essential safety measures managers, building maintenance & tradespeople, lawyers, accountants, insurers, property valuers and quantity surveyors.

SCA (Vic) is seeking to highlight the economic importance of Victoria’s strata sector, which they state contributes an estimated \$1 billion in annual economic activity, yet the sector remains largely overlooked by our state government.

So, what does SCA (Vic) see as key election issues for the strata services sector?

They nominate three priorities:

- Protecting and supporting strata consumers: which includes lobbying for a dedicated helpline (operated by CAV) and advocating for a minimum educational standard for OC managers;
- Creating smarter, greener and more liveable strata communities: under which SCA (Vic) is seeking a partnership with Sustainability Victoria to establish a Victorian Sustainability Fund and associated joint projects; and
- Combatting the high prevalence of building defects in strata: here they propose the creation of a building information portal (managed by VBA) and the closing of loopholes in the Domestic Building Insurance scheme.

From the point of view of OCs, while we

do not embrace our label as “consumers” (as this relegates us to an unacceptable passive role), there is much merit in SCA (Vic) raising the profile of residential strata with the state government.

It is important that the Victorian Government appreciates our sector’s economic contribution and understands that strata living is now a mainstream way of living for Victorians and, as such, our specific circumstances must be addressed.

To this end, the focus of SCA (Vic) on raising the skill level of OC managers is a much welcomed and strongly supported initiative as improving the calibre of service providers to our vertical villages is essential.

But as our final words are *nihil de nobis, sine nobis* – “nothing about us, without us”. OCs, most especially the elected committees must be part of these decisions and not simply “consulted”.

We are not passive consumers. ●



Dr Janette Corcoran
APARTMENT LIVING EXPERT
LEARN MORE ON FACEBOOK.COM/
SKYPADLIVING/

WE LIVE HERE

State election – the short answers

Last month in this column we asked the question of the major parties competing at the forthcoming state election – what are your party’s policies on short-stays?

We have talked *ad infinitum* with all the parties about regulating short stays. We have engaged with the first, second and third Minister for Consumer Affairs, currently Melissa Horne. We met with former Planning Minister Richard Wynne. We had talks with the Leader of the Liberal Party in the Legislative Council David Davis. And we have had ongoing communications with leader of the Victorian Greens Samantha Ratnam.

Despite the pandemic, political turmoil, scandals and factional machinations, we tried to keep engaged with politicians across the political spectrum. We have been providing concerned Victorian politicians with case studies, precedent legislation and regulations from other jurisdictions, expert reports, impact statements and statistics.

In this pre-election column, we will summarise what we know about party policies on short stays.

Party Policy Scorecard

SHORT-STAY POLICIES	LABOR	LIBERALS	GREENS
STRATA RULES	✗	✗	✓
DAY CAP	✗	✗	✓
REGISTRATION	✗	✗	✓
PENALTIES	✓	✗	✓

▲ The Party Policy Scorecard shows the short-stay policies of the major parties, ranked against We Live Here key policies.

There are four key policies that We Live Here has been articulating in this column since the previous election:

- **Strata rules:** Let owners’ corporation lot owners decide if their building will have short stays. Owners should have the right



to regulate short stays by enacting special rules, within a common framework. This should include the right to on-charge additional costs on a *cui bono* basis.

- **Day cap:** Limit the number of days that an apartment can be short-term let.
- **Registration:** So many jurisdictions around the world already require short-stay operators to register their property, usually at the municipal level and for a cost-recovery fee. This most fundamental regulation will also help governments understand the extent of the industry.
- **Penalties:** Regulations only work if there are consequences for breaching those rules. The penalties must be enforceable and proportionate to the social and economic impact.

Labor

From previous meetings and correspondence with the Minister for Consumer Affairs, Melissa Horne and her office, we know that the Labor policy is to maintain the status quo until after “a” review. This repeatedly deferred review had been promised in 2020, then 2021 and now it has been pushed out to “between 2023 and 2026”.

The status quo continues to be resistance to any regulation by strata rules, day caps, and even registration, one of the most basic governance tools. Our Party Policy Scorecard shows a tick for the Labor policy on “penalties”. This attribution is exceedingly charitable, because while there are penalties in the current patchwork legislation, they are virtually unenforceable in practice and risibly meagre in quantum. In our extensive review of VCAT cases there has been

not one instance where VCAT has enforced a penalty. Zero.

Our dialogue with the minister’s office will be maintained because we trust that empirical economic evidence will eventually have an influence on policy – and we will continue providing that evidence.

We had been hopeful that the departure of Richard Wynne might have afforded an opportunity for a broad review of policy from the planning portfolio viewpoint. We hope this may still be forthcoming from the new Minister for Planning the Member for Pascoe Vale and Legislative Assembly Leader of the House Lizzie Blandthorn.

In Victoria it seems evident that the disconnect between the planning and consumer affairs “silos” of government is at least partly responsible for the short-stay policy disarray in this state. It is therefore perhaps not all that perplexing that the Labor party can only tell us to wait a few more years for yet another review. Meanwhile there are lessons that can be learned from other states e.g. NSW where the intersection of the NSW equivalents of planning and consumer affairs portfolios has been recognised and managed, producing some nascent yet remarkable reforms.

Liberals

Liberal policy is quite hard to discern, given that the last known stance was evinced by the party’s 2018 mass absence from parliament when the short-stay issue came to a vote.

Prior to the last election, We Live Here was equably engaged in dialogue with all the major parties, including the Victorian Liberals.

At the time, David Davis, Leader of the

Liberal Party in the Legislative Council, declared his party’s support for a legislative review on short stays, making the party’s parliamentary walkout even more shocking.

Since the start of the pandemic, the Liberal Party arguably has had few other distractions that may have relegated our humble edification.

While we remain hopeful of a policy announcement from the Victorian Liberals, it will be a little too late for this pre-election wrap. For now, our Party Policy Scorecard for the Liberals shows no known policies.

The Greens

Moving along the spectrum, the Victorian Greens have made a welcome announcement that has made headlines, including in the news pages of this issue.

We had been anticipating this policy release for some time. Last year Greens State MP for Melbourne Ellen Sandell called for regulation of the short-stay industry, something we have been arguing strenuously for. Our ongoing dialogue this year with Samantha Ratnam further stimulated our expectations.

Now they have proposed a regulatory framework for short stays:

A cap of 180 nights a year for a property to be rented as a short stay.

Allowing owners corporations to regulate short stays where the property is not the host’s principal residence.

Setting up a mandatory register of short-stay operators.

We Live Here is pleased with the Green’s announcement and the concordance with our key policies. We look forward to seeing the details.

Campaign donations

As a not-for-profit organisation, donations from individuals and buildings keep our campaigns going. To register as a supporter of We Live Here or to donate, please visit welfare.net. We Live Here does not accept donations from commercial tourism interests. ●



Barbara Francis & Rus Littleton
CAMPAIGN@WELIVEHERE.NET
LEARN MORE AT
WELIVEHERE.NET



Vote for Southbank!

Dear Southbankers, while we are navigating the vicissitudes of spring weather here in Melbourne, we are also racing towards that time in the political calendar of a Victorian State Election.

WORDS BY *Trisha Avery* – Secretary

Held every four years on the last Saturday of November, this year it is Saturday November 26.

As a community group which has no political affiliation, Southbank3006 does not support any one candidate as an organisation, but we have a view as to what our elected representatives need to focus on to support our amazing suburb of Southbank, which of course, sits within the electorate of Albert Park.

Most politicians do not understand the way our suburb has been designed. Our urban landscape has been developed haphazardly. While there are pockets that have been designed more seamlessly together such as the low-rise Southbank Village incorporating streets such as Wells, Dodds and Coventry streets, the high-rises of Clarendon St, Kavanagh St and City Rd, and the variety of iconic buildings between City Rd and the Yarra River are less consistent in their designs and in their street level interfaces.

We are a suburb of distinct precincts and as we continue to grow, which we will, it is very important that whoever is elected to represent us here in Southbank understands that we do need to have a significant focus on a number of key issues over the next four years.

We actually need to have an elected representative who is interested in us, who is interested in what it's like to be a resident here, to bring up a family here, to retire here, to live and work with diverse and dynamic multicultural residents and businesses. And please don't assume it's just that we have proximity to multiple transport options, the fabulous life along the



▲ Left-to-right, top to bottom: Green candidate Kim Samiotis, Liberal candidate Lauren Sherson, Labor candidate Nina Taylor, and Independent candidate Georgie Dragwidge.

river and the amazing Arts Precinct ... it's much more than that.

It's about our own community, our daily walks to schools, with dogs, to have coffee in parts of the suburb unknown to visitors and the warmth and connectivity we have in our "vertical villages".

Another important aspect our elected representative needs to focus on is that we live with high numbers of visitors to our precinct – Southbank has a high tourist value. That comes with both a dynamism but also a challenge for locals. As well as the glorious Yarra, we have Melbourne's renowned and very important (both nationally and state-wide) Arts Precinct.

The National Gallery of Victoria, Arts Centre Melbourne, the Victorian College of the Arts,

ACCA, The Malthouse, Melbourne Theatre Company, Melbourne Recital Centre and, of course, the development of the multi-billion-dollar new NGV Contemporary.

Our question for all the candidates is how do we integrate large visitor and tourism numbers into a suburb with more than 20,000 residents, without losing liveability or amenity? How do we create low traffic neighbourhoods with hundreds of daily visitors, how do we ensure the "economy of the future" for Southbank is not just hospitality, but Southbank-generated and -located business, and how do we attract corporate HQs to the proximity of the CBD?

We are already a strong community, but to sustain that into the future, providing significantly more green space and the development

“

As a community group which has no political affiliation, Southbank3006 does not support any one candidate as an organisation, but we have a view as to what our elected representatives need to focus on to support our amazing suburb of Southbank, which of course, sits within the electorate of Albert Park.

”

(with some urgency) of low traffic neighbourhoods, are essential to ensure we remain, at street level, a vibrant, connected and engaged Southbank community.

These and many more questions need to be answered for us to know who we will cast our vote for in Southbank, some questions were answered at our Candidates Forum on November 6 at the Holiday Inn. But we do encourage you to think clearly about your vote and how, whoever your choice, will work for our wonderful Southbank now and into the future.

And finally, believe or not Christmas is weeks away and we are thrilled to be working with the City of Melbourne and other local community groups to present for you all "Southbank, A Very Merry Friend-mas" on Saturday, December 10 at Boyd Park and Boyd Community Hub. It's a free event with lots of entertainment, family friendly activities and local businesses. Please bring your friends, families and join us.

We look forward to meeting you all. ●

MEET A NEIGHBOUR

Meet a Southbank neighbour, Lev Lafayette

There is a life force and resiliency that radiates from Lev Lafayette. His wasn't an easy childhood, one that brought him to Australia with an adoptive parent as an infant and eventually led to him being raised as a ward of the state. It's a story that Lev shares with his characteristic up-beat attitude and good nature.

Though he doesn't keep in touch with people from that part of his past, he's grateful for the private education he received and a social worker that fought for him, enabling him to become self-reliant at the age of 17.

Lev's early years of private education laid a groundwork for what has become a lifetime of learning six degrees (including four Masters) and work towards a seventh degree in climate science and policy. It's a journey that has led to his current role as a supercomputing engineer at the University of Melbourne.

"I've always been interested in computers since I was a kid," he said.

His interest in information technology (IT) has found him throughout many careers regardless of his role. In the 1990s, while serving as an electorate officer for the Victorian Parliament, he was assigned to oversee the computer database. While serving as an election observer to the United Nations in 2002, he met

officials from East Timor who needed an IT person, a position Lev filled for more than a year. His role overlapped the country's fight for independence from Indonesia.

"I found myself in some very precarious situations working in the government house that, at one point, was overrun," he said.

These days he's combining his passion for computing with that of the environment.

"I'm at a point in my life where I'm more concerned about giving back than making money," he said.

He and a business partner have started a company, Avatar Mountain, with the goal of providing technology to assist Pacific Islands with climate change mitigation and renewable energy.

"There are thousands of islands that are less than a metre above rising sea levels and they also need to cut their dependence upon fossil fuels," he said.



The two issues may have combined solutions, such as a sea wall that both protects shorelines and generates hydro/wind power.

Lev moved to Southbank two years ago after living in Kew for years, saying he "loved having the city at my doorstep and being in the centre of all the action."

He's participated in Southbank3006

events and appreciates both the opportunities and challenges Southbank presents ...

"The demographics are really unique here – I think there are a lot of people who are independent by nature and may not be drawn to joining community activities, and yet would really benefit from them."

He said there was also a need for

many voices getting behind local issues.

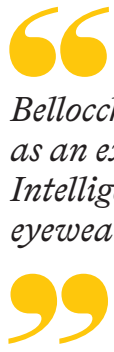
"We need much, much more green. Look at Lygon St, for example, just adding green strips down streets, next to footpaths, between traffic and people would make such a difference in making Southbank more welcoming." ●

MaryKay Rauma is a founder of Southbank3006 a not-for-profit community and advocacy group focused on connecting residents and improving the liveability of Southbank. All Southbank residents are encouraged to join for free by scanning the QR code.



MaryKay Rauma
SOUTHBANK3006 CO-FOUNDER
COMMUNITY@SOUTHBANK3006.COM

Excellent vision: what this optometry practice does differently



Bellocchio Eyewear stands out as an expert for Biometric Intelligent Glasses by renowned eyewear company Rodenstock.



At South Melbourne's Bellocchio Eyewear, your vision is in the best hands: Emeline's team has been awarded "Expert for Biometric Intelligent Glasses" by Rodenstock for its technical equipment and expertise at the highest level. Here you get glasses of unparalleled quality: with B.I.G. EXACT – exact biometric lenses by Rodenstock.

Exact vision is a matter for experts

According to Emeline at Bellocchio Eyewear, "this award confirms one of our core values: your perfect vision."

"That's why B.I.G. EXACT inspires us – because the lenses are made precisely for your eyes."

The advantage? "Your eyes move up to 250,000 times a day. With B.I.G. EXACT you can enjoy the sharpest possible vision with the highest contrast every time you look at something."

Better vision at dusk

This impressive precision is possible because Bellocchio Eyewear captures thousands of measuring points for each eye with the DNEye Scanner by Rodenstock. These then flow directly into the lens production process. The lenses are calculated so that they fit each individual eye precisely, down to the micrometre.

An exact biometric eye model ...

Whether it's single vision, progressive lenses or computer spectacles, the biometric precision is unrivalled.

Those who want to experience B.I.G. EXACT lenses themselves, can book an eye test at Bellocchio Eyewear. For more information, scan their QR code on page 11 of this edition of *Southbank News* or visit bellocchio.dneye.com.au

OWNERS' CORPORATION LAW

Boom, bust and out of here

More builders and developers will choose to "go bust" instead of being held accountable to owners' corporations (OCs) for dodgy building defects.

More consumer protection is required for Victoria's \$343 billion property sector in these uncertain times, as higher construction materials costs begin to bite, and higher interest rates continues to take the wind out of the sails of the booming property market.

More than 1.6 million Victorians (25 per cent of the population) now live or work in an OC building.

However, light-touch building standards and the Victorian Building Authority's failure to use its enforcement powers over the past 20 years had led to a decline in building standards for high-rise apartment buildings.

An OC recently found out the hard way, when the builder it had taken to VCAT for building defects slipped into voluntary liquidation shortly before the hearing commenced, leaving the OC out of pocket and unable to chase any other wrongdoers in the matter.

In my view, this is a cautionary tale for consumers and investors of apartment buildings and the lessons ought to be heeded by other OCs otherwise the same thing could happen to them.

Ascot Constructions Pty Ltd (in liq.) constructed a three-storey residential apartment building in 2011 at Caroline Springs. Soon after the occupancy of the brand-new building, complaints about defects including water leaks, blocked pipes and flammable cladding emerged.

It took the OC three years to bring proceedings against the builder for damages in respect to the defects and a further three years before the claim was finally set to be determined at a hearing in VCAT.

The architect and building surveyor had also been joined to the claim but had ultimately acted to settle their share of the liability before the hearing outside of the proceedings. The OC was left with around \$2 million in out-of-pocket costs, and the building company tipped itself into voluntary liquidation shortly before the commencement of the VCAT hearing.

- This meant that VCAT was left with no option but to strike out the OC's claim, leaving it with no way of recovering the outstanding costs from the builder.
- Three key lessons can be taken away from this experience. OCs and owners that find themselves in a building defects dispute with a builder should:
- Act quickly to bring a claim against the liable parties. One of the problems in the case above, was



simply the amount of time that it took for the OC to begin proceedings.

Retain good building experts and engineers to provide the OC with accurate and timely reports that can be used as evidence in legal proceedings.

Be open and flexible in negotiations and settlements because of the unavoidable danger of the respondents going into liquidation.

In the meantime, if a defect arises in your building be sure to use the small window of opportunity to bring a claim, do your due diligence on the ability of the builder and other concurrent wrongdoers to meet the costs of the claim, and remain open minded and practical when conducting negotiations and settlements. ●



Tom Bacon

TOM BACON IS THE PRINCIPAL LAWYER OF STRATA TITLE LAWYERS.

TOM@STRATATITLELAWYERS.COM.AU

10 YEARS ON

Looking back at Southbank News

NOVEMBER 2012 | ISSUE 13 |

SOUTHBANK NEWS



Fireworks to ring in new year

The City of Melbourne has announced its plans for this year's New Years Eve celebrations and there are set to be great opportunities in and around Southbank to bring in 2013.

Despite police having safety concerns about the large number of people around the Princess Bridge and Federation Square (just like in this picture of last year's celebrations) the family fireworks at Yarra Park at 9.30pm will go ahead.

At midnight the whole city is set to come alight and the show has been designed to ensure if you have a clear view of the city skyline then you will have a sensational display to watch.

City of Melbourne CEO Kathy Alexander said there will be a new format enjoyed by all this year.

"The city has become a major destination for New Year's Eve with people coming from far and wide to enjoy the atmosphere. The decision to change the format has given us a great opportunity to extend the festivities across the city so we can all share in the excitement on the night," Ms Alexander said. ●

工党承诺投资150万建ACCA新绿地

维州Andrews工党政府承诺，如胜选将向墨尔本市政府拨款150万澳元，在南岸的澳大利亚当代艺术中心(ACCA)附近开发新的绿地和狗公园。

Jemma van Zaanen

工党Albert Park选区的候选人Nina Taylor取代了长期担任的州议员Martin Foley，10月27日她与维州环境和气候行动部长Lily D'Ambrosio和墨尔本副市长Nicholas Reece一起宣布了这一消息。

出席发布消息的还有ACCA的首席执行官Max Delaney、工党的南部大都市候选人Ryan Batchelor和当地居民团体Southbank3006的代表，他们长期以来一直支持这项提案。

针对人们对南岸缺乏开放空间的日益担忧，Taylor女士作了回应，她表示，该提议将把Grant街和Sturt街拐角处的“花岗石沙地”改造成新的绿色空间，供“当地社区家庭全年享用”。

她说：“开放的绿色空间对于保持健康、活跃和有一个社交场所非常重要，我们知道市中心土地稀少，所以建造这个新公园对当地社区来说是一笔巨大的财富。”



维州环境和气候部长Lily D'Ambrosio表示，工党政府把该项目作为其住宅区公园计划(Suburban Parks Program)的一部分，该计划已经在维多利亚州修建了“6500公顷的新公园、步行道、自行车道、袖珍公园和狗公园”。

由于南岸目前的人均公共开放面积约为

2平方米，远低于世界卫生组织建议的最低人均9平方米水平，墨尔本市政已经为该地区优先考虑创造更多的绿色空间，作为其“最高优先事项”之一。

副市长Nicholas Reece告诉本报，市政议会一直在寻找每一个可利用的机会，“尽可能有创意地”为南岸开发绿色空间。



南岸社区门户网站上线

一个面向南岸(Southbank)的社区门户网站已经上线，为在南岸生活、工作或学习的当地人提供了一个专用空间，让他们可以随时了解邮编3006区域内的项目开发和各种活动，并对社区未来发表意见。

David Schout

该网站是市政新建覆盖本市不同区域的10个“社区门户”网站之一，希望成为一个一站式的社区门户空间，提供南岸所有相关的信息。

这其中包括开发项目的更新、如何预订场地或会议室、如何申请资金，重要的是如何对影响当地社区的事情发表意见。

值得注意的是，市议会还为南岸（以及其他九个区域）聘用了一名“合作伙伴”，作为社区具体问题的主要联络人。

市政希望此举将有助于社区与市政议会的联系，分享他们对未来的想法。

市政承认，市内的不同区域(例如，南岸与东墨尔本之间)存在巨大差异，并表示其新的“基于区域”的邻里方法将确保能够理解和应对独特的社区问题。

市政表示，这种模式确保了“社区参与的持续循环”，使得当地知识和优先事项转化为具体行动。

市长Sally Capp告诉本报：“我们知道每个社区都有不同的需求、机遇和挑战，所以我们很自豪能够为全市每个社区推出一个专用的社区门户网站。”

“我们倾听南岸社区的意见，社区希望创造更多的狗友好场所和绿色开放空间，这对他们来说很重要。”

欲了解更多信息，请访问：participate.melbourne.vic.gov.au/neighbourhoods

探索南岸未来积极互动的零售

南岸的BETA by STH BNK 正在通过其最新的“引人入胜和娱乐性”谈话交流系列活动(NEXT X NOW)，重新构想实体零售的未来及其对社会变革的积极贡献。

Kaylah-Joelle Baker

该系列活动的下一次小组讨论将于11月11日星期五在Hanover大厦举行，围绕零售设计促进积极社会变革这一重要主题，邀请所有想探索创意空间的人参加。

BETA系列实际上是一个实验空间，根据开发商Beulah的零售和租户伙伴关系总经理David Monaghan的说法，BETA这个名称是关于“实验、测试、试用和原创”。

该空间有两个至关重要的层面，在传统的实体零售模式限制之外，重新构想未来的概念，并以有趣和身临其境的方式发挥这些新想法。

第一个层面是底楼的“废物到未来”实验

室(Future From Waste Lab)，该实验室与许多可持续发展的品牌合作，如奢侈时尚品牌KITX。这是一个教育工作室，品牌商来这里与现场团队合作，用二手衣服打造限量版新系列作品，并利用“废物作为资源”。

第二个层面是四楼，将举办备受期待的系列讲座，还有一个工作空间，一个开放工作室，可供出租的活动空间，以及一个小小的零售弹出式区域，推广现场的“工匠和设计师所制作的产品”。

这个创意互动空间从Sibling建筑设计公司的内部空间转变为由艺术家Atong Atem设计的外部空间，成为一个探索性的空间，其团队注入了对话和变革的深层动力。

该建筑自2021年初开放，是几年前Beulah与伦敦的未来实验室和墨尔本的



BlueRock合作进行的一个大型研究项目的成果。

随着Beulah即将开展其27亿澳元的STHBNK by Beulah开发项目，包括目前的Hanover大厦和BMW宝马车展厅建筑。Monaghan先生说，BETA系列旨在分享对这个澳大利亚最高建筑的混合用途开发项目的见解。

欲了解更多信息，请访问：sthbnk.com/events

民意调查改善南岸餐饮服务

雅拉河商业协会(YRBA)发起了一项综合民意调查，以帮助改善向南岸居民提供的食品和饮料的种类和风格。

该调查源于今年早些时候墨尔本的一项重要调查，调查发现，居民正在寻求比现在更合适的餐饮选择。

商业协会得到了墨尔本市政府的支持，致力于进一步深入了解当地居民的心理，YRBA表示，将帮助市政府全面了解当地人的喜好和需求。

商业协会主席Jeremy Vincent告诉本报，COVID-19疫情的封锁



向南岸商家证明了22000多居民可以成为“一个强大的市场支撑力，特别是如果本地的餐饮业能更适应

南岸人的日常需求”。Vincent先生说：“我们不只为结婚纪念日提供一年一次的晚



餐，而是希望以适当的价格提供多样化的食品和饮料选择，而且每周可以多次的提供。”

雅拉河岸区域是非常重视旅游业的，但COVID疫情表明，将所有的鸡蛋放在同一个篮子里，作为一种商业模式可能是灾难性的。”

“我们与墨尔本市政的社区官员一起，设计了这项调查，以梳理出该区域一般休闲活动的细节。”

这项七分钟的民意调查由品牌和广告制作公司Right Angle制

作，详情可以上网查找youryarra.melbourne

该民意调查将持续到明年1月，让当地居民有充足的时间来完成调查问题，并将提供有关奖品，包括一个“墨尔本精神”号船上的两人晚餐和10张50澳元的当地餐饮券，于2023年3月初开奖抽取。

YRBA 将会发布民意调查结果，并在2023年初举办研讨会，使南岸商家能了解当地社区的需求。

What's On: November

Community Calendar



UNTIL DECEMBER 2023
Arts Centre Melbourne Sunday Market
 Featuring local designers and artisans, discover handcrafted treasures made by local artisans at Arts Centre Melbourne's Sunday Market.
Between Hamer Hall and the Theatres Building, Arts Centre Melbourne



UNTIL DECEMBER 31
Aboriginal Heritage Walk
 Gain insight into the rich history and thriving culture of the First Peoples of Australia through a journey of identifying significant native plants within the Gardens.
rbg.vic.gov.au

Buxton Contemporary
 Buxton Contemporary, located at the University of Melbourne's Southbank campus, draws upon the Michael Buxton Collection of contemporary Australian art as a foundation and inspiration for exhibitions, performance, research, teaching and publishing.
buxtoncontemporary.com



Stompers at Southbank Library at Boyd
 Come along for an energetic 30 minutes of stories, songs, rhymes, music and most of all, fun. Ages 18 months to 3 years; no bookings necessary.
 03 9658 8300



NOVEMBER 27, 11.15AM
Book Club
 Meet locals here at Book Club and learn how to build your business and financial literacy skills.
thewomensinvestmentclub.com.au
Boyd Community Hub, 207 City Rd



Southbank Sustainability Group
 A growing group of green and sustainability enthusiasts who meet up at Boyd on the first and third Saturday of each month. Connect via Facebook for more information and educational tips!
Facebook: SouthbankSustainabilityGroup

Business Directory

Church

St Johns Southgate
 20 City Road Southbank
 Telephone 9682 4995
www.stjohnssouthgate.com.au

YAMAHA
 YAMAHA MUSIC SCHOOL
 SCAN TO LEARN MORE
au.yamaha.com/education

Real Estate

LM LEASING MELBOURNE
 PROPERTY MANAGEMENT
 Level 4, 175 Flinders Lane
 Melbourne VIC, 3000
Ph: 03 9670 5444
leasingmelbourne.com.au

RayWhite
 Ray White Southbank | Port Phillip
 111 Clarendon Street, Southbank 3006
 P: (03) 8102 0200
www.raywhitesouthbank.com.au

Fitness

JUST TIME
 All trainers are University Degree qualified and we come to you!
www.justtimeworkplacehealth.com
www.justtimept.com

Physiotherapy

Elite Sports Physiotherapy
 Sports & Spinal Physiotherapy
 Remedial Massage
 Clinical Pilates
 Post-Surgical Rehabilitation
 Free Injury Assessments
 WorkCover/TAC Claims
 Mezzanine Level, 13-15/1 Freshwater Place, Southbank
PHONE: 8640 0328 WEB: www.elitesportsphysio.com.au

TRIELLE.MIRVAC.COM
50 mirvac

Shopping

QUEEN VICTORIA MARKET
 For the best fresh produce, gourmet food and specialty shopping, you can't beat Queen Vic Market.
Open Tuesday, Thursday, Friday Saturday & Sunday
with plenty of affordable parking.
QVM.COM.AU

Functions

Facilities hire Beautiful venue for weddings and memorial services
Concert venue with excellent acoustic and comfortable seating Spacious function room Meeting rooms Kitchen
 20 City Road Southbank
 Telephone 9682 4995
www.stjohnssouthgate.com.au

Photography

PHOTOGRAPHY STUDIES COLLEGE
MASTERS | DEGREES | DIPLOMAS
CERTIFICATES | SHORT COURSES
 Find Out More
PSC.EDU.AU + 61 3 9682 3191
 info@psc.edu.au | 37-47 Thistlethwaite St, South Melbourne VIC 3205

PROPOSAL TO UPGRADE OPTUS MOBILE PHONE BASE STATION AT
312 St Kilda Road, Southbank VIC 3006 with 5G
RFNSA reference: 3006002

- The proposed facility consists of the addition of new 5G equipment and associated works as follows:
 Optus
 Installation of six (6) new panel antennas (2.688m long)
 Installation of three (3) new panel antennas (0.590m long)
 Installation of three (3) new panel antennas (0.810m long)
 Installation of three (3) new panel antennas (0.750m long)
 Add ancillary items including twelve (12) new remote radio units, and in shelter works (Including main structure strengthening if required)
- Optus regards the proposed installation as a Low Impact Facility in accordance with the *Telecommunications (Low-Impact Facilities) Determination 2018* based on the description above.
- In accordance with Section 7 of C564:2020 Mobile Phone Base Station Deployment Code, we invite you to provide feedback about the proposal. Further information and/or comments should be directed to: Blessing Nhliziyo of Genus at Feedback@Genus.com.au, or 3/5 Hartnett Cl, Mulgrave VIC 3170, by **4pm on November 28th 2022.**

Music

Melbourne Symphony Orchestra

Politician

We're here to help. Please get in touch if you need assistance.
Your Federal MP for Southbank.
Josh Burns MP
 FEDERAL MEMBER FOR MACHAMARA
joshburns.com.au
 josh.burns.mp@aph.gov.au (03) 9534 8126
 219 Barkly St, St Kilda VIC 3182

Here today, gone tomorrow

RayWhite



Scan QR for further details. Call us on 8102 0200 or email us via southbank.vic@raywhite.com to book an appraisal for sale or rental. Visit raywhitesouthbank.com.au for more details.



1703/105 Clarendon Street, Southbank
\$560,000 - \$599,000
Max Hui



801/58 Clarke Street, Southbank
\$370,000
Austen Kosasih



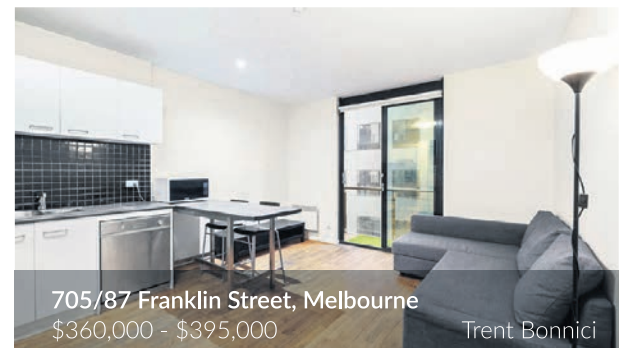
102/144 Clarendon Street, Southbank
\$270,000 - \$290,000
Trent Bonnici



13/55 Canterbury Road, Middle Park
\$1,800,000 - \$1,925,000
Trent Bonnici



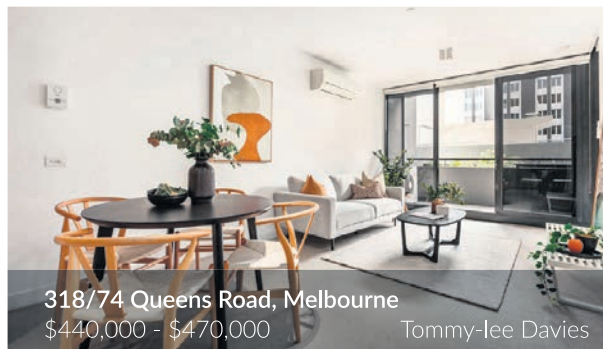
410/12 Queens Road, Melbourne
\$570,000 - \$600,000
Tommy-lee Davies



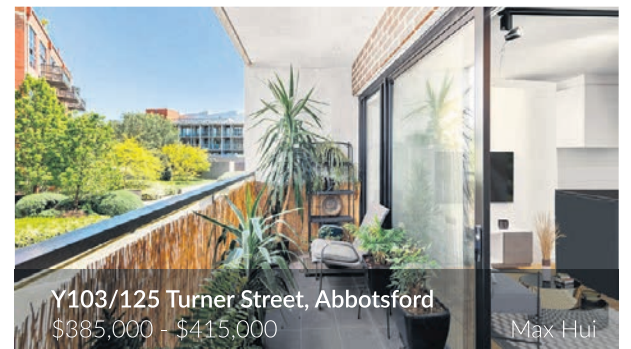
705/87 Franklin Street, Melbourne
\$360,000 - \$395,000
Trent Bonnici



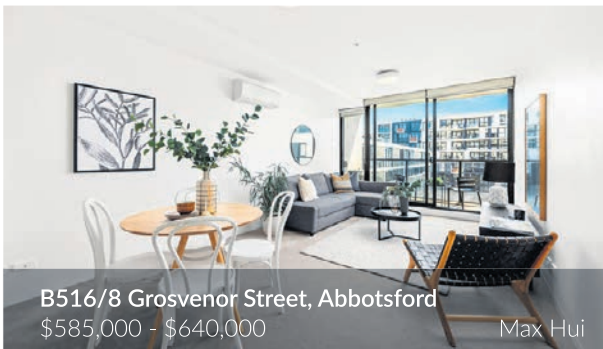
507/99 Palmerston Crescent, South Melbourne
\$360,000 - \$395,000
Trent Bonnici



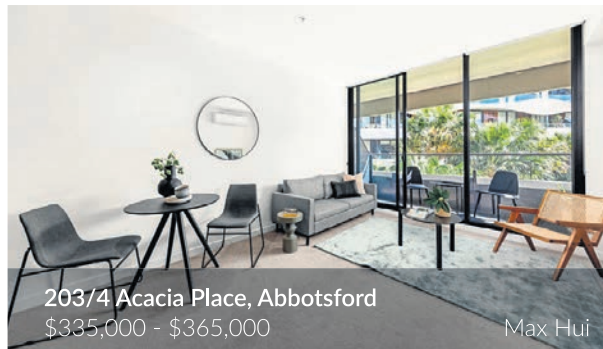
318/74 Queens Road, Melbourne
\$440,000 - \$470,000
Tommy-lee Davies



Y103/125 Turner Street, Abbotsford
\$385,000 - \$415,000
Max Hui



B516/8 Grosvenor Street, Abbotsford
\$585,000 - \$640,000
Max Hui



203/4 Acacia Place, Abbotsford
\$335,000 - \$365,000
Max Hui



805/60 Islington Street, Collingwood
\$1,475,000 - \$1,600,000
Trent Bonnici



107/120 Palmer Street, Richmond
\$300,000 - \$330,000
Max Hui



307/65 Dudley Street, West Melbourne
\$300,000 - \$330,000
Austen Kosasih

Michael Pastrikos: 0404 282 864
Max Hui: 0430 238 021
Tommy-Lee Davies: 0416 823 173
Trent Bonnici: 0402 670 441
Georgia Ackroyd: 0437 810 755
Austen Kosasih: 0422 396 900
Bence Balazs: 0450 952 107

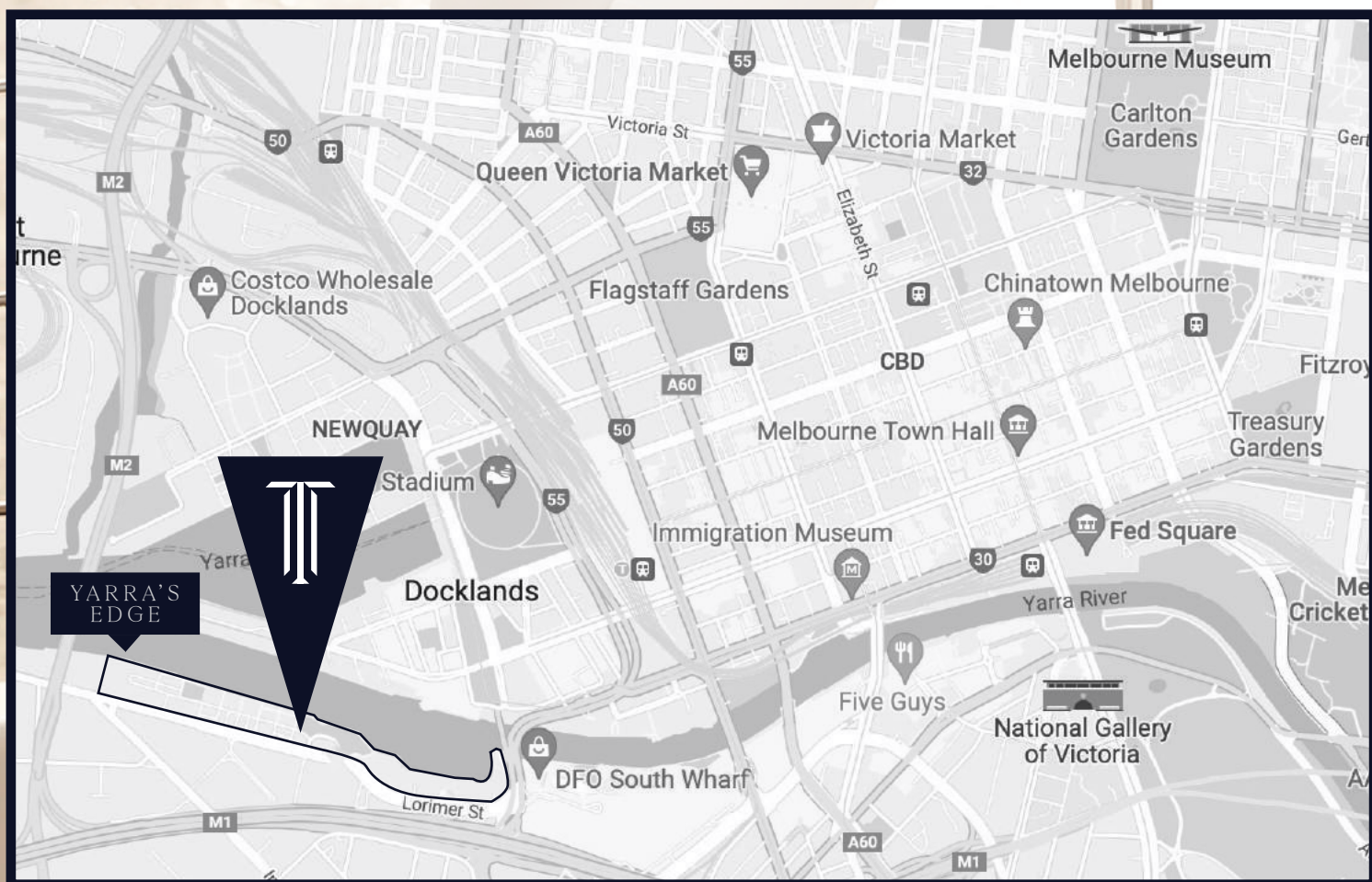
raywhitesouthbank.com.au

TRIELLE

by mirvac

Enjoy a morning on your yacht in Marina YE – mere metres from your riverfront residence – before taking a short scenic walk into the heart of Melbourne’s vibrant CBD.

An afternoon in the Arts Precinct, a weekend wandering Melbourne’s countless galleries, evenings dining with friends in world-renowned restaurants. From Trielle, the city and its endless cultural and culinary delights are yours to enjoy.



TRIELLE.MIRVAC.COM



RIVERSIDE RARITY



TIMELESS LUXURY

TRIELLE

by mirvac

Artist's impressions as at 27.09.22 were produced prior to planning approval, statutory approval and commencement of construction and is subject to change. The information, image and artist's impression depicting interiors and exteriors are intended only as a guide and are not to be relied on as a representative of the final product.

Be one of the first to view the Trielle Display Suite

Janet Walker | 0466 440 863

TRIELLE.MIRVAC.COM



ARTIST'S IMPRESSION