

SOUTHBANK NEWS

southbanklocalnews.com.au

Forever Free

Puzzles & Trivia P22



Council ticks off stage one of Southbank Promenade, but remainder “now anyone’s guess”

The City of Melbourne has breathed new life into some tired sections of Southbank Promenade, but finishing the remaining planned upgrades may not be achieved for some years.

WORDS BY *Sean Car*
PHOTOGRAPHY BY *Maria Vasileva*
COUNCIL AFFAIRS

The council, in partnership with the state government, celebrated the completion of stage one of its \$3.8 million upgrade of Southbank Promenade in July.

Stage one includes the stretch between Princes Bridge and Southgate in front of Hamer Hall, as well as a further small section between Southgate’s main entrance and Evan Walker Bridge.

The works have provided a more spacious promenade, fresh bluestone paving, lighting upgrades, upgraded seating as well as new trees, including a cabbage tree palm, paperbark trees and jacarandas.

Lord Mayor Sally Capp said completing stage one marked a “major milestone for this significant project” along one of the city’s busiest and most popular thoroughfares.

“Southbank is one of our most popular destinations in the city, as proven by the soaring foot traffic that beats benchmark levels on nights and weekends,” Cr Capp said.

Continued on page 7.

Flood warning: Southbank at “high risk” by 2040

More than 16,000 properties in Southbank are at “high risk of damage” from flood waters by 2040, a new study shows, prompting an “urgent call to action”.

WORDS BY *Brendan Rees*
ENVIRONMENT

The figure was revealed in a recent report commissioned by the Victorian Marine and Coastal Council (VMaCC) and Life Saving Victoria (LSV), which looks at the impacts of future rising sea levels and storm surges.

“We know that climate change is going to hurt many Victorian communities if we do not act,” VMaCC chair Dr Anthony Boxshall said.

“This rigorous report clearly and comprehensively documents the economic challenges that Victoria’s coastal communities will face from sea level rise and related storm surges.”

According to the report, which included research from the University of Melbourne and consulting firm Climate Risk, Southbank was ranked as the number one suburb in Victoria with the “greatest number of high-risk properties” due to coastal inundation by 2040 with a total of 16,646 properties, followed by Docklands (3270 properties).

In response, VMaCC and LSV have called for an independent taskforce to be established to develop and promote “a vision and operational blueprint” to guide Victoria’s response to rising sea levels and related storm surge.

Speaking of ways to ensure future development was designed with flood resilience in mind, City of Melbourne Deputy Lord Mayor Nick Reece said the council was working to make sure



▲ Major flooding on Whiteman St in 2017.

that Southbank remained a “highly desirable and liveable area while we also responding to the challenges of flooding and climate change”.

“Our planning and building rules are designed to preserve the quality architecture and design of Melbourne streets and built form but also recognise the challenges of increased future flood events,” he said.

“This is not about building fortresses and walls – it’s about well-designed beautiful buildings and streets that are climate resilient.”

This included the council partnering with Melbourne Water to update flood mapping for specific areas within the municipality that are experiencing increased growth and urban development.

Among those setting a design precedent for high-rise development in Southbank was developer Beulah, which is behind the \$2 billion STH BNK by Beulah set to become Australia’s tallest high-rise project.

Continued on page 16.

MAPCO UPDATE, PAGE 03

A Engaging on the Arts Precinct transformation



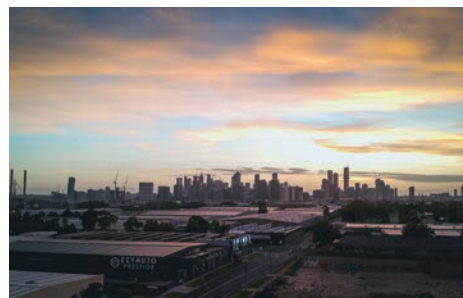
ARTS & CULTURE, PAGE 04

B Captivating sculpture unveiled in Montague



COUNCIL AFFAIRS, PAGE 09

C Disneyland “thought bubble” slammed



ARTS & CULTURE, PAGE 14

D “Sonic trip” to Antarctic for *Now or Never*



Lilian Kwan David Umama Trinity Paderno Austen Kosasih Taylor Sims Max Hui Tommy-Lee Davies Michael Pastrikos Giorgio Fulli Bence Balazs Tayla Hore

Buy, Sell, Rent

Speak to our team today

8102 0200 | raywhitesouthbank.com.au

RayWhite

CONTACT
Suite 208, 198 Harbour Esplanade
Docklands 3008
southbanklocalnews.com.au
Tel: 8689 7980

EDITOR
Sean Car

PUBLISHER
Hyperlocal News Pty Ltd
ABN: 57 623 558 725

ADVERTISING
Hyper-local print works for advertisers in our digital world because local people are interested in local news. To sell to the Southbank community, contact Jack Hayes on 0401 031 236 or jack@hyperlocalnews.com.au

Reader contributions are welcome. Send letters, articles and images to: brendan@hyperlocalnews.com.au

The deadline for the September edition is September 1.

SOCIAL MEDIA
Follow us on Twitter
@SOUTHBANK_News

Like us on Facebook
Southbank News

Follow us on Instagram
@southbanklocalnews

Opinions expressed by contributors are not necessarily shared by the publisher.

hyperlocalnews.com.au
admin@hyperlocalnews.com.au



Struggle to police skies: invasive drones prompt privacy concerns



An increasing presence of drones flying around the Southbank area has left residents feeling on edge, as sightings outside high-rise apartments raise concerns of privacy and safety.



WORDS BY *Brendan Rees*
SAFETY & SECURITY

In recent months residents have reported drones hovering near apartment windows, with the issue gaining traction on social media where many people have shared unsettling encounters with the aerial intruders, prompting questions about illegal drone activities.

Southbank Residents' Association president Tony Penna said he was aware of the issue, saying there's "definitely a potential privacy concern" but added, "the question is how do you police that?"

"How do you know who it is? You just see a drone. The big question is: what time of day are they flying? If it's night-time, it's very questionable. If it's during the day, it could be anyone."

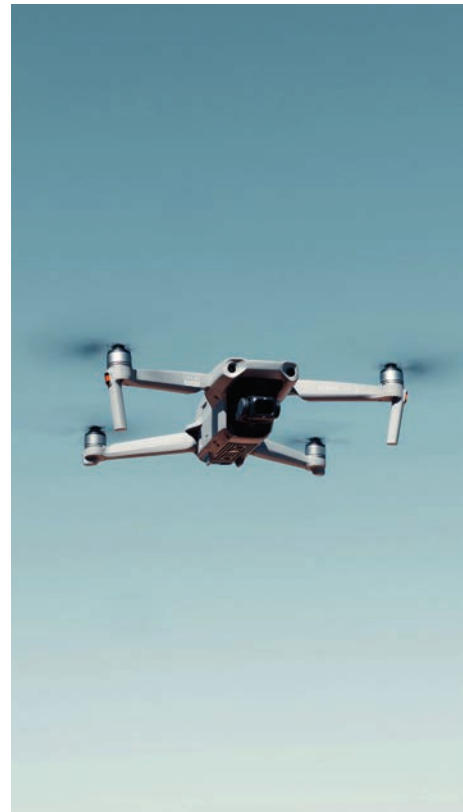
"It's a tough one but you're relying on people doing the right thing."

A Civil Aviation Safety Authority (CASA) spokesperson said in accordance with the drone safety rules, recreational drones must not be flown at night or in a populous area.

"Populous areas include major events, a crowded beach, busy road or wherever people may be gathered or residing," the spokesperson said.

"Operators must also fly their drone at least 30 metres from other people. Keeping at least 30 metres from other people provides a buffer zone in case they lose control of their drone or there is a system failure."

The spokesperson anyone who believed someone may be breaking these rules can make a report at casa.gov.au/about-us/contact-us



"Anyone who fears for their safety or needs an immediate response to a drone-related incident should report it to their local police."

Commercial drone operators, on the other hand, must have a licence to operate – such as real estate aerial photography – and obtain permission from their local council or landowner before operating a drone.

According to the City of Melbourne's guidelines for the use of remotely piloted aircraft systems (RPAS) within the municipality, it stated, "operators must follow the CASA rules for flying drones at all times" and "any breaches of CASA rules for flying from or over a council park are enforceable by CASA".

"CASA cannot enforce privacy related matters. Safety breaches can only be investigated where there is sufficient evidence, such as photos or video recordings of the breach and the person controlling the drone at the time."

Community group Southbank 3006 vice-president Jannine Pattison, who had recently spoken on radio and TV about drones buzzing around high-rises, said "residents are concerned for their privacy, and rightly so".

"People have a right to feel safe in their own homes without feeling they must draw the

curtains at sundown – when most of the reports of drones come in," she said.

"This is an increasing problem as more and more people invest in drones for recreational use. While drones have become the new age Peeping Tom, they can be just as invasive as binoculars and telescopes seen on many balconies and used for stargazing ... who knows?"

Peter Jose, who recently started Drone Pilot Pete, a licenced and certified drone company, said he was passionate about conducting all drone jobs according to aviation regulatory and safety protocols in an industry he conceded was "heavily regulated but hard to control".

His services included flying drones for weddings, construction sites, events, and real estate luxury home builders across south-east Melbourne, and while this did not yet include operations in the CBD and Southbank, he said residents should be made aware of any drone activity that may occur in their area.

"People in the high-rises should be all aware of what's going on. When I do an inspection of a high-rise, the management have put posters up and let everyone know what's going on so it's above board," he said.

"Also having spent the past two years as a safety manager for a global aviation company, all drone pilots should be conducting a job safety analysis on any site – this is a systematic procedure that identifies safety elements of each job/task step and coaches the employee on how to avoid potential safety hazards, this may include take-off and landing areas that are organised in a clear area."

"This is only part of what needs to be done to comply with rules and regulations. It's a big deal for them to do this, and if it's not done then yes, people are going to say, 'why is there a drone outside my window or flying around?'"

Mr Jose acknowledged there were people operating drones without a licence and didn't understand the regulations "so it's very hard to pinpoint where they're coming from."

"People come to @Dronepilotpete because we're a fully registered business with all approvals from CASA, the aviation regulator, and we have over 25 years' experience as an airline pilot/safety manager and photographer." ●



Brendan Rees
JOURNALIST
BRENDAN@HYPERLOCALNEWS.COM.AU



QUEEN VICTORIA
MARKET
*make it
a market day*

Home to the best fresh produce, great shopping,
delicious food and coffee and fun events.

OPEN TUESDAY, THURSDAY, FRIDAY,
SATURDAY & SUNDAY

CORNER ELIZABETH & VICTORIA STREETS, MELBOURNE

QVM.COM.AU

STUDENT Q&A

ARTS



Get to know a student's experience studying at The University of Melbourne's Faculty of Fine Arts and Music. Delphine Byrne is studying a Bachelor of Fine Arts (Visual Art) at the Victorian College of the Arts (VCA) ...



PHOTOGRAPHY BY *Maria Vasileva*
ARTS & CULTURE



What motivated you to choose your degree?

I've wanted to pursue art since I was a child. I always loved drawing and making. I took painting classes run by VCA short courses on Saturdays where one teacher encouraged me to apply for the undergrad – so I did. The rest is history.

Describe a typical day of study ...

I drop my daughter off at kindergarten, arrive at my studio and check my calendar. I work out how much studio time I'll have – making a list of everything I need to do and what can be achieved within that time. Depending on the project, and where I am in the process, I'll spend my day researching, experimenting, planning, sourcing material or producing work.

What has been your favourite experience?

I participated in an artist exchange with Geidai University in Tokyo. I collaborated with a student from Geidai to co-create a work for an exhibition in Melbourne and Tokyo. It was really cool to see different iterations of my work exhibited across two countries simultaneously.

What inspires you?

Becoming a mother has been a huge inspiration, both conceptually and in time management. I'm inspired by forgotten historical events, contemporary female oppressions and injustices, gendered violence, clichéd perceptions of motherhood, and drawing connections. I also draw inspiration from ancient witchcraft practices, which I use as a lens to engage with contemporary feminist issues.

What advice would you give to someone considering your degree?

You won't just make art in the degree. You'll also learn about art in context to First Nations knowledge, colonisation, de-colonisation, mathematics, ecology, film, music, feminism, animation, world history, psychology, spirituality, dance, performance, and more.

What are your goals for the coming years?

I want to make a living from my art practice and continue juggling parenting and art making. I plan to keep up my practice, writing proposals, applications and hopefully exhibiting consistently in galleries. I'd also love to continue my studies in Honours at VCA.

Tell us more about your new work as part of the Majlis Exhibition at the Fiona and Sidney Myer Gallery in August ...

The work is called *Find Juanita: Sigil Score*, inspired by the disappearance of Juanita Nielsen in 1975. The work comprises of a graphic score etched into a piece of clear perspex. I've incorporated a sigil – a symbol I created – to cast a spell to find Juanita. I perform the score in a ritual where I channel the energy of her disappearance using Reiki. Then I perform the score with an amplified violin and theremin, which creates sound in response to my movements. The score itself is an extension of a previous work, and my ongoing enquiry into Juanita's death. ●



For more information:



MELBOURNE ARTS PRECINCT CORPORATION

Melbourne Arts Precinct Transformation community engagement

When the Melbourne Arts Precinct Transformation (MAPT) project's major works started this year, the project team had already been out and about for more than 12 months, talking to Southbank residents about what it takes to deliver a \$1.7 billion project.

This project will bring to life a single, continuous art, civic and cultural precinct, stretching from Federation Square through to Southbank, NGV and beyond, to create a globally significant space of gathering and creativity. It will feature The Fox: NGV Contemporary, the precinct's new gallery that will be dedicated to art and design, significant upgrades to Arts Centre Melbourne's Theatres Building, and a new

18,000-square-metre urban garden for people to enjoy.

The project team participated in the annual Open House Melbourne for the first time this year, allowing the public to learn more about the project, while also being given a behind-the-scenes look at the State Theatre. The six sessions of groups of 14 were booked out within 45 minutes, highlighting the community's keen interest to learn about the future of the Melbourne Arts Precinct.

The first stop of the tour was a bird's eye view of the site on Level 8 of the Theatres Building. From here, the group could see down into the worksite, where a large space is being excavated to expand Arts Centre Melbourne's underground loading dock. Attendees then travelled "back of house", down to the State Theatre. Going past dressing rooms and rehearsal spaces, they heard about the many improvements being made to the heritage building.

"This tour has made me feel proud of Melbourne, and to be a part of this city," one attendee said.

"This is what Open House is all about," said another.

For those disappointed to miss out, there will be more opportunities to tour the project site next year when the project team open their doors again for Open House Melbourne tours.

For Southbank residents living next door to the construction area, in addition to resident drop-in sessions, construction updates and quarterly newsletters, the project now has a Community Reference Group. Members were selected following a strong response to the Expression of Interest earlier this year.

The Community Reference Group members are all local residents. They are Sulagna Dasgupta, David Hamilton, Eileen Pang, Clair Richards, Dan O'Keeffe on behalf of Southbank Residents' Association, and MaryKay Rauma on behalf of Southbank3006.

Community Reference Group member MaryKay Rauma said, "The group represents the diverse demographic that calls Southbank home and is a testament to the Melbourne Arts Precinct Corporation's (MAP Co) desire

to include the local community in this project. We are all passionate about Southbank and committed to representing local residents' perspectives as we hear about how the project will be rolled out."

The group met for the first time on June 29, with the meeting chaired by Penny Hutchinson, who has been appointed as the Independent Chair. The Community Reference Group has been established for the life of the project as a channel for in-depth discussions with community representatives on project activities.

It will give the project team local perspectives on the project, open communication channels and, where possible, help minimise construction impacts on the community. ●



For more information and to subscribe to regular updates: artsprecinct.melbourne

Pawa Café & Bar

Open Tuesday - Sunday

Head to Pawa at Hamer Hall Riverside, Art Centre Melbourne's First Nations food and beverage offering. Bringing native ingredients to familiar dishes, Pawa boasts a unique and exciting menu.

P.A.W.A 100 St Kilda Rd, Melbourne
W: pawacatering.com.au/cafe-bar/

Supporting Local Business **Melbourne Arts Precinct Transformation**





Preps celebrate 100 days of school

WORDS BY *Brendan Rees*
ARTS & CULTURE

Preps at South Melbourne Primary School have celebrated 100 days of schooling with a hive of activity.

The milestone event on August 1 saw students gather for a grand party at “Prep Land” which was filled with excitement, laughter, and a sense of accomplishment.

Students joined their parents in a “joyous journey” of counting from zero to 100 as they reached level five of the prep building – where the festivities continued of families and teachers watching a video created by staff creatively counting to 100.

The staff video has become a cherished tradition at the school, where the school community celebrates 100 days of learning and growth.

Other activities included making beautiful necklaces adorned with 100 pieces of pasta and crafting crowns embellished with 100 stars.

“We are absolutely thrilled by the remarkable progress of our youngest learners,” Grade Prep team leader Makayla Bulte said.

“They have blossomed into confident readers, writers, and mathematicians, and their growth is truly inspiring.”

“As we look back on these 100 Days of Prep, we cannot help but be amazed at the growth, potential, and enthusiasm displayed by our young learners. We eagerly anticipate the continued journey of learning and exploration that lies ahead.” ●

Captivating sculpture unveiled in Montague

A striking new sculpture exploring the history of flooding and the current rising water table within the Fishermans Bend precinct has been unveiled.

WORDS BY *Brendan Rees*
ARTS & CULTURE

Located in Kirrip Park, South Melbourne, the \$300,000 sculpture called *Waterlines*, which is made from glass-fibre reinforced concrete, resembles a local roof peak reflecting the residential and industrial heritage of the Montague area.

The piece was created by renowned Australian artist Ian Strange and was funded and gifted to the City of Port Phillip by Wonderment Walk Victoria, a not-for-profit organisation dedicated to enhancing public spaces with art with a scientific and environmental focus.

In addition to exploring local stories and water management, the sculpture also addresses climate change and the possibility of future urban flooding.

“One of my favourite things from the research was finding the photos of the floods and seeing kids floating down the street on doors and playing in the floods,” Mr Strange said.

“The sculpture itself is based on a series of cuts taken out of timber-framed homes and so really replicates a lot of the tropes of those early workers’ homes in the area.”

The sculpture was installed in April 2020, shortly after the beginning of the COVID-19 pandemic, but the work was celebrated with an official launch event July 20, which was attended by City of Port Phillip Mayor Heather Cunsolo.

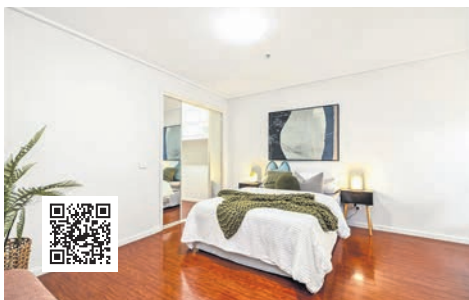
Wonderment Walk Victoria founder and chair Eddie Kutner, who was also present at



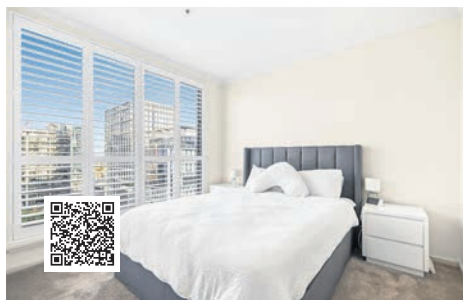
the event, said their organisation was proud to donate the piece.

“It is vital for Melbourne to maintain its pre-eminent position as a knowledge and

vibrant city, not just for the financial benefits which come from the recognition of international education and tourism, but also for the quality of life of its residents.” ●



2 1 1



3 2 2

SALE

701/163 City Road, Southbank

- Internal size approx 87m2
- Dedicated living, dining and study
- Large kitchen with quality appliances & breakfast bar
- Palatial master bedroom with large walk-in-robe and study nook
- Available with vacant possession

WHY WAIT?
Ray White Southbank | Port Phillip | 03 8102 0200

Auction
Sat, 19th Aug 10:30am
On Site Auction

Michael Pastrikos
0404 282 864
michael.pastrikos@raywhite.com

Bence Balázs
0437 810 755
sales.mp@raywhite.com

raywhitesouthbank.com.au

SALE

117/39 Dorcas Street, South Melbourne

- Stunning 3-bed, 2-bath apartment with sunlit style and spaciousness
- Private penthouse floor in highly-sought after Plaza building
- Expansive living, dining, and gleaming kitchen with breakfast bar

WHY WAIT?
Ray White Southbank | Port Phillip | 03 8102 0200

Auction
Sat, 26th Aug 10:30am
On Site Auction

Michael Pastrikos
0404 282 864
michael.pastrikos@raywhite.com

Bence Balázs
0437 810 755
sales.mp@raywhite.com

raywhitesouthbank.com.au

Two teens arrested after fire engulfs factory

WORDS BY *Brendan Rees*
CRIME

Two teenagers have been arrested following a dramatic blaze that engulfed an abandoned factory in Southbank on July 6.

Fire crews were called to the fire in Clarendon St about 4pm following several calls to triple-zero of a building being “well alight”.

No-one was inside at the time and there were no reports of injuries, however the fire caused extensive damage to the factory.

Victoria Police are treating the blaze as suspicious, with Melbourne Crime Investigation Unit detectives interviewing two teenagers over the incident.

Police arrested two boys, a 13-year-old from Little River and a 15-year-old from Safety Beach, at Southern Cross Station on July 7.

“They were both released and are expected to be charged on summons with arson,” a police spokesperson said.

Victoria Police said they were expected to charge the teens with a series of thefts, robberies, and an attempted armed robbery in the CBD in recent weeks.

Ten trucks including an aerial appliance responded to the fire, which engulfed two small factories near Haig St, causing smoke to billow across the city skyline.

It took 30 firefighters just under an hour to bring the blaze under control.

“It looked shocking, there were enormous amounts of smoke,” said a witness, who was driving along City Rd at the time, adding there were “lots of sirens and people being moved out”.

A community warning was issued for people to avoid the area on Clarendon St between Crown and Citylink, which also caused traffic chaos with the closure of Clarendon St in both directions as well as the tram service.



A \$60 million 48-level residential tower has been proposed for the site of the fire at 56-62 Clarendon St after plans were endorsed by the City of Melbourne in October 2017.

The state government’s planning department in July confirmed a ministerial building permit had been granted to developer Holder East on June 29, 2018, with the most recent activity being an extension of time to start the development

This was approved in April last year, allowing the approved development to start no later than June 29, 2024.

The 161-metre building has been designed by architecture firm Fender Katsalidis, which also designed Southbank’s Eureka Tower.

It would accommodate 208 dwellings, 128 serviced apartments and a cafe on the ground floor for residents and pedestrians.

Anyone with information relating to the fire urged to contact Crime Stoppers on 1800 333 000 or crimestoppersvic.com.au ●

Southbank police staff get back parking permits

WORDS BY *Brendan Rees*
COUNCIL AFFAIRS

Parking permits have been reissued to staff at Southbank Police Station, just weeks after being removed by the City of Port Phillip.

The council initially took away the permits for personal vehicle parking use from June 30 after citing an availability of all day paid parking in the area.

But in a backflip decision, councillors at their August 2 meeting voted in favour of providing 30 parking permits to the police station in what they believed struck a fair parking environment balance for everyone, including workers and visitors.

The permits allow staff to park personal cars in residential streets, permit zones, timed bays, and ticketed bays while they are at work.

The move was made after the police station, located at the corner of Moray and Chessell streets, advised that most paid parking bays nearby were reserved, limiting access to its 70 staff members.

According to a council report, Southbank Police Station outlined several reasons why it required access to parking permits, but this was knocked back by the council at their May 17 meeting as part of its parking management policy one-year review, in which the permits were removed.

The reasons from police included safety concerns for officers finishing shifts late at night or early in the morning, damage to vehicles, and officers being approached in the street by offenders after leaving work.

It also noted limited public transport options and a lack of parking reducing the desirability to work at Southbank Police Station, “leading to reduced service delivery in the area”.

But the station’s latest feedback prompted Mayor Heather Cunsolo to move a notice of



motion at the August council meeting to reinstate the parking permits after acknowledging the “good work they [police] do”.

“This is an attempt at finding middle ground in a compromised situation to introduce a few more permits back to them,” Cr Cunsolo said.

The measure was supported by Cr Christina Sirakoff who said the “police force plays an important part in our community”.

“This is one way that we can support them, when they’re going to work and going home, to make it easy for them for accessing permits,” she said, adding “I’m in full support of this when they’re a critical part of safety on our streets”.

The motion said by limiting the number of parking permits to 30, “there will be a reduced impact on other users such as workers and visitors needing to access parking in the area.”

But the parking permits will not come free of charge, as the “introduction of a cost in line with a visitor permit (approximately \$126) can offset some of the revenue loss whilst emphasising the value of the permit”.

“Other parking users are expected to pay to park in the area and the introduction of a fee ensures equity in the treatment of all users,” the motion read.

Cr Robbie Nyaguy voted against the motion, saying it was not “unreasonable” to ask any worker or visitor, who do not get a parking permit, to “find alternative (transport) methods”. ●

RayWhite

AGENT OF THE YEAR
ratemyagent
agent of the year awards
SUBURB WINNER
2023

Southbank’s most recommended agent for the fourth consecutive year

Thinking of selling?
Contact Michael today 0404 282 864



0404 282 864 | michael.pstrikos@raywhite.com | raywhitesouthbank.com.au



Yarra River Business Association’s

NETWORKING LUNCHEON

yarrariver melbourne

SEPTEMBER 7, 2023, 12 NOON — 1.30 PM
YUGO, CROWNE PLAZA MELBOURNE HOTEL, 1-5 SPENCER ST

AFTER MONTHS OF COMMUNITY AND STAKEHOLDER CONSULTATION, THE LOOK AND FEEL OF THE GREENLINE PROJECT IS FALLING INTO THE PLACE.

HEAR AND SEE HOW YOUR INPUT HAS INFLUENCED THE MASTER PLAN, AND WHAT THE DETAILED PLANNING FOR THE PROJECT’S SEVEN ZONES WILL ACHIEVE.

PRESENTED BY MARK ALLAN, COUNCIL’S DIRECTOR ‘GREENLINE’ PROJECT.

\$77 PER HEAD, (GST INC)
2 COURSE LUNCHEON WITH FULL BEVERAGE.
RESIDENTS MOST WELCOME.

Bookings: www.yarrariver.melbourne/lunch

Enquiries: **Tim Bracher 0412 502 931** exoff@yarrariver.melbourne



We're introducing simpler parking to reduce confusion

Simpler parking in the CBD

The City of Melbourne is making kerbside parking simpler and fairer in the CBD by introducing cheaper rates for off-peak times, waiving fees for 15-minute parking sessions by using the EasyPark app and unlocking hundreds more spaces.

Work is underway to review and revise parking in every CBD street to install simpler signs and make sure loading zones and accessible (disability) spaces are in the right locations.

We're also introducing clear spaces in every street for passenger drop-off and pick-up, to reflect the changing ways people enter and exit the city.

All you need to do is check the signs to understand the parking conditions.

These CBD parking improvements will be complete early next year.

We'll soon be improving parking in other neighbourhoods across the municipality and will engage businesses and the community to understand what is needed so we get the balance right.

The changes are not 'set and forget', as we'll follow up to make sure the new parking conditions are working well.

This approach optimises public kerbside parking, which makes up only 5 per cent of all parking in the municipality. The remaining 95 per cent of parking is managed off-street in residential, private and public car parks.

We'll also continue working with off-street parking operators to make it easier to find and access the 68,000 public off-street parking spaces – so drivers can make the best choice for their time in the city.

Our new CBD parking plan was informed by the experience of about 1,000 parking users and does not propose any increase to the current maximum \$7 hourly parking rate.

Simpler signage and conditions will reduce confusion and could result in a 10 per cent decrease in parking fines.

To learn more about simpler CBD parking, visit melbourne.vic.gov.au/simplerparking

WHAT'S CHANGED?

- Simpler parking signs to reduce driver confusion
- Consistent 2-hour parking limits every day from 7am to 10pm, including Sunday
- Fairer, data-led pricing, with a new off-peak rate of \$4 per hour after 7pm weekdays and all weekend
- Introduction of off-peak rates on Sunday
- Free parking to support short stops of up to 15 minutes (when using the EasyPark app)
- Optimising underused spaces and converting loading zones to 2-hour parking after 4pm – making hundreds more parking spaces available in the evenings
- Consistent loading zone time limits for drivers to make deliveries, as well as disability parking and dedicated pick-up and drop-off spaces that are easier to find and use

IN BRIEF

GET THE FACTS ON THE VOICE

Learn about the Aboriginal and Torres Strait Islander Voice to Parliament and the upcoming referendum. We're committed to truth-telling and supporting respectful conversations. Visit melbourne.vic.gov.au/voice

CHILDCARE CENTRES VIRTUAL TOUR

Find a childcare centre that suits your child and family's needs by taking a virtual tour. Go to melbourne.vic.gov.au and search Lady Huntingfield Early Learning and Family Services and North Melbourne Children's Centre to take a tour and learn more about our childcare options. Both our centres are accepting registrations for children aged from 0 to 5 years.

COMMUNITY MEALS SUBSIDY PROGRAM

Our Community Meals Subsidy Program provides funding to not-for-profits in the City of Melbourne to create connections for older people through food. A subsidy of \$6 per meal is available to eligible organisations. Applications close Thursday 31 August at 5pm. Visit melbourne.vic.gov.au/communitymeals for more.

DIGITAL PERMITS

Applications for busking permits and other business permits are now online, making it easier for you to do business with the City of Melbourne. Smart tech gives you 24-hour access to apply for permits, get copies of permits and invoices, and ask for changes. Visit melbourne.vic.gov.au/permitsupport for more.

BOOST COVID PROTECTION

With the arrival of winter and waned immunity in the community, together we can take steps to protect ourselves and each other from COVID by getting a 2023 booster dose from a doctor or pharmacist. You can also collect free rapid antigen tests – visit melbourne.vic.gov.au/freecovidtests for details.

READ ALL ABOUT IT

Be the first to know what's happening in your local neighbourhood and across the City of Melbourne. Subscribe for regular updates, direct to your inbox. Visit melbourne.vic.gov.au/subscribe to sign up.

NEIGHBOURHOOD PORTALS

Say hello to your friendly neighbourhood partner and share ideas to make your community the best it can be. From historic Carlton to the glistening harbour at Docklands, each City of Melbourne neighbourhood needs different services and support. Reach out to your neighbourhood partner at participate.melbourne.vic.gov.au/neighbourhoods

NOW OR NEVER

THE SPECTACULAR PROGRAM FOR THE INAUGURAL
NOW OR NEVER FESTIVAL HAS DROPPED!

Taking over Melbourne from 17 August to 2 September,
the program features an art trail, projections, a 360°
pop-up dome cinema and a non-stop weekend of gigs.

GET YOUR TICKETS TODAY AT
nowornever.melbourne.vic.gov.au





Council ticks off stage one of Southbank Promenade, but remainder “now anyone’s guess”

Continued from page 1.

“It’s essential for the traders, residents and visitors of Southbank that this hotspot is a welcoming place to shop, dine and work,” she said.

“This stage has delivered new bluestone paths to boost accessibility, as well as the addition of new seating, lighting and trees stretching all the way from Princes Bridge to the Evan Walker Bridge.”

With stage one having caused significant disruption, in particular to traders along Hamer Hall, the council’s city transport, infrastructure and operations portfolio lead Cr Davydd Griffiths thanked the community for its patience.

“We’d like to thank all of the local businesses and residents for their patience and support while we’ve got under way with this project,” he said.

“Tens of thousands of people visit Southbank Promenade every day, and this new and improved space will encourage even more visitors to the neighbourhood into the future.”

While stage one was originally meant to incorporate the entire stretch between Princes Bridge and Evan Walker Bridge, redevelopment plans by Southgate’s owners ESR Australia saw the council remove the section in front of the precinct’s food court from its schedule of works.

ESR has approval for \$470 million plans to partially demolish its current three-storey complex to make way for new bars, restaurants, and shops within a new five-storey podium, as well as a 26-storey office building, which would be complemented with riverside parkland.

But ESR hasn’t yet announced when it expects to begin construction, meaning the long-awaited upgrades to the section of Southbank Promenade outside its precinct is likely to be many years away from being completed.

The council says it is working with ESR to coordinate future works in front of Southgate following their redevelopment.

In a statement provided to *Southbank News*, an ESR spokesperson said, “As an active asset manager working alongside the current owners, ESR Australia has been involved in reviewing the plans for Southgate to ensure any future development caters to the needs of retailers, the local community, and visitors alike in a post-COVID-19 environment. The approval granted includes several conditions that must be met prior to any further action on the project.”

“ESR Australia remains focused on supporting retailers and improving the customer experience. Recent works have had a particular focus on the food court and restoration of public art to enhance the pedestrian experience along the Yarra River promenade.”

And while the council’s full upgrade of the promenade

takes in the stretch between Princes Bridge all the way to Queensbridge St, the timing of when the remaining sections between Evan Walker Bridge and Queensbridge Square will begin also remains unknown. The council said upgrades between Evan Walker Bridge and Queensbridge St were set to start following the completion of the Southgate development but didn’t confirm the specific reasons as to why when asked by *Southbank News*.

A City of Melbourne spokesperson said \$500,000 had been allocated in its budget over the next two financial years to begin design and planning on the future stages of the transformation of Southbank Promenade, including between Evan Walker Bridge and Queensbridge Square.

Former joint venture partners Crown Resorts and Schiavello had originally promised funding to upgrade Queensbridge Square and the section of the promenade up to Evan Walker Bridge as part of its \$2 billion Queensbridge Tower project, which never went ahead.

Renewal of Queensbridge Square, including the long-awaited removal of the infamous “Red Stairs”, is also tied up in the council’s “stage six” upgrades of Southbank Boulevard between the promenade and City Rd.

While praising the council for its current upgrade of the promenade to date, Yarra River Business Association (YRBA) president Jeremy Vincent said it was “now anyone’s guess” as to when the outstanding works would be completed.

“Originally, Crown was going to fund it [between Queensbridge St and Evan Walker Bridge] as part of a ‘community contribution’ required when building its third tower. However, that money disappeared when the tower project was cancelled,” he said. “So, funding for the rest of the promenade now needs to come completely from the council coffers.”

Southbank Residents’ Association (SRA) president Tony Penna said SRA was “delighted” to see stage one upgrades completed but labelled the council’s decision to delay Queensbridge Square upgrades as “bewildering”.

“These works [stage one] had been in planning for some time and were long overdue. However, we are bewildered with council’s decision to place the Queensbridge Square section on hold owing to the anticipated works for stage six of Southbank Boulevard,” he said.

“The Boulevard works were designed after much community consultation in 2018; SRA cannot see any reason for a delay to Queensbridge Square upgrades owing to anticipated Southbank Boulevard works. We say let’s just get on with it and not finish the promenade in a piecemeal fashion.”

The council said community members would have a chance to have their say on all future works prior to construction getting under way. ●



New crossings installed in safety win, but blind spot causes some concern

Residents have welcomed two new zebra crossings at two busy intersections in Southbank, however the position of one is causing some concern with traffic turning into City Rd.

WORDS BY *Brendan Rees*
COUNCIL AFFAIRS

Pedestrian crossings at the intersection of Balston and Kavanagh streets, as well as Balston St and City Rd were installed in May, making it safer to access the popular Boyd Park and Melbourne Square.

The City of Melbourne has also installed narrow road humps, a speed cushion and traffic islands, to further slow traffic near the crossings.

The zebra crossings are designed to be highly visible, in what community group Southbank3006 vice-president Jannine Pattison said was “an incredible win for local street safety”.

“We are incredibly pleased that the City of Melbourne had been proactive in implementing these infrastructure improvements,” she said.

“I would like to extend a personal thank you to the Lord Mayor for taking the time to walk around Southbank with me to discuss the problems with traffic and the pressures on the current infrastructure due to population and development increases.”

However, while very pleased the crossing at Balston St and City Rd had been completed, Ms Pattison said the position of it had caused some concerns “with cars stopping on the crossing to gain visibility of any oncoming cars travelling along City Rd.”

“This renders the crossing near useless. It really should have been set back two or three metres from the corner. Hopefully this is something that can be addressed.”

Ms Pattison said low light was also making it difficult for pedestrians stepping onto the crossing at Balston St and Kavanagh St.

“I was of the understanding that lighting was to be installed to increase visibility at the zebra crossings,” she said.

“However, I remain optimistic that the City of Melbourne is hearing the voices of Southbank3006 and the residents of Southbank and we are seeing the fruits of our advocacy.”

“While low-traffic neighbourhoods are at the heart of our wish list for Southbank, we will continue to celebrate the small wins that put people first.”

Southbank Residents’ Association president Tony Penna said he was delighted the crossings had been installed after the issue was raised before the pandemic.

The City of Melbourne’s 2023–24 budget includes more than \$12 million to renew and maintain roads and footpaths across almost 80 locations, including \$4.2 million to fix potholes and improve road surfaces. Upcoming projects in the council’s footpath renewal program in Southbank include Whiteman St (between Clarendon St and Cecil St), as well as Cecil St (between Whiteman St and “SM0337”, an unnamed laneway alongside Yarra Crest apartments).

In other projects, the City of Port Phillip has recently completed works to upgrade the footpath on City Rd between Cecil St and West Gate Freeway overpass/Ballantyne St.

“The footpaths were due for renewal and work entailed reducing the footpath width from approximately six metres wide to three metres wide to support the installation of new garden beds as part of our Greening Port Phillip Strategy, as well as the removal of crossovers which are no longer in use,” Port Phillip Mayor Heather Cunsolo said. ●



Hi property owners...
How do you know if your property is *short-stay* ready?

Get your free Short-Stay vs. Traditional Rental estimate today



Contact us today on 1300 726 082
or shortstay@thehopkinsgroup.com.au

Our Partnering Listing Platforms:





Two men charged after Porsche and luxury items found

WORDS BY *Brendan Rees*
CRIME

Two Southbank men are among nine people charged after \$750,000 in cash, drugs, and swords were seized in police raids following an alleged drug ring investigation.

Victoria Police allege the group had been selling large commercial quantities of methylamphetamine and heroin across Melbourne, with the major investigation having begun in September last year.

Detectives raided two Southbank properties on July 17, seizing luxury bags and jewellery believed to be valued at more than \$100,000, as well as a 2018 Porsche Macan and a small heroin press found in the car.

A 34-year-old Southbank man believed to be the alleged leader of a drug syndicate was arrested and charged with trafficking large commercial quantities of methylamphetamine and heroin.

He was remanded to appear at Melbourne Magistrates' Court on November 20.

A 28-year-old CBD woman was also arrested and charged with possessing various drugs of dependence after search warrants were executed over a five-day period from July 10 to 14 at properties in Albion, Braybrook, and Kalkallo, resulting in five arrests.

The woman was bailed to appear at Melbourne Magistrates' Court on October 2.

Further search warrants were executed at properties on February 24 including Southbank, Deer Park, St Albans, and Braybrook where police seized drugs and articles used in the preparation of drugs of dependence for sale and about \$400,000 in cash.

A 32-year-old Southbank man has since been charged with trafficking a commercial quantity of methylamphetamine. He was bailed to appear at Melbourne Magistrates' Court on July 17.

During a raid at a St Albans property on February 24, police found and seized a loaded handgun, ammunition, an imitation handgun, and quantities of what police allege appear to be heroin and methylamphetamine, as well as six Samurai swords, luxury bags and cigarette lighters, and about \$50,000 cash.

The raids, which included suburbs across Melbourne, are part of an investigation by detectives from the Major Drug Squad into alleged drug trafficking by an Asian organised crime syndicate.

Police are continuing their investigating. Anyone with information is urged to contact Crime Stoppers on 1800 333 000 or crimestoppersvic.com.au ●



▲ Construction giant Multiplex has been chosen as the builder for STH BNK by Beulah.

Multiplex set to take on \$2b skyscraper build in Southbank

WORDS BY *Brendan Rees*
BUILDING

Construction giant Multiplex has been officially announced as the builder for the highly anticipated STH BNK by Beulah project, with what will be the tallest skyscraper in the Southern Hemisphere.

The \$2 billion mixed tower at 60 Southbank Blvd will be Australia's first five-minute vertical city including two twisting towers when it's completed in 2029.

The announcement of Multiplex – whose notable Melbourne projects include Australia 108, Collins Arch, 80 Collins St, and Federation Square – follows an extensive review of globally competent and respected construction companies around the world.

"We're thrilled to be named the preferred builder for this unrivalled skyscraper, which is undoubtedly one of the most anticipated projects to be undertaken in Melbourne's CBD," Multiplex's regional managing director Ross Snowball said.

"We look forward to working with Beulah to bring their vision for Australia's tallest tower to life."

A five-year build is expected with construction set to start later this year or early 2024.

Soaring 365 metres high, the towers will be home to a world-class retail precinct with an impressive selection of shops, a comprehensive wellness precinct, a childcare centre, and a Four Seasons Hotel.

It will also house an innovative cultural centre in partnership with Centre Pompidou, commercial office space, a diverse residential offering, and numerous pocket parks as well as the world's tallest vertical garden.

Beulah managing director Jiaheng Chan said Multiplex was chosen due to its wealth of global experience, including delivering some of Australia's most significant and iconic projects,



"many of which push the boundaries in terms of engineering and design."

"Following an extensive review period, we believe them to be the most experienced to be our builder partner for such an iconic project and look forward to a long-term partnership that will see STH BNK By Beulah come to life," he said.

"Additionally, STH BNK By Beulah has a strong emphasis on sustainability and biophilia and Multiplex's commitment to reducing its carbon footprint was also taken into consideration; Multiplex is committed to net zero carbon buildings and sites by 2030 and a net zero carbon value chain by 2050."

While works are yet to start, STH BNK by Beulah has taken out the title as one of Australia's fastest-selling projects with apartment sales ranging from \$30 million to \$38 million.

Lord Mayor Sally Capp said, "We are really so pleased for Beulah that they are ever closer to achieving this momentous project that we know is going to deliver on-going jobs, deliver stimulus whilst it's being built and really leave a lasting legacy in our city." ●



E-scooter rider caught drink-riding

WORDS BY *Brendan Rees*
SAFETY & SECURITY

Police have put e-scooter riders on notice after a man was caught allegedly drink-riding almost three times over the legal blood alcohol limit in the CBD.

A 32-year-old was riding a "trial-operated e-scooter" at the intersection of Lonsdale and Exhibition streets at 5.45pm on July 28 when he was intercepted by State Highway Patrol officers.

Police allege the Fitzroy North man returned a breath alcohol reading of 0.133, resulting in his driver's licence being immediately disqualified for 13 months, and being fined \$817.

The man was slapped with a further \$240 fine for not wearing a helmet.

Victorian law stipulates that e-scooter riders caught with a blood alcohol limit over 0.05 can lose their driver's licence with the penalties the same as if they were in charge of a car.

Victoria Police Superintendent John Fitzpatrick of the Road Policing Operations and Investigations Division said the incident in the CBD should serve as a lesson to all e-scooter riders "that you are not immune from the drink driving laws applicable to other motorists".

"Alarmingly, this rider was also caught not wearing a helmet – he was lucky to not be seriously injured given he was riding while impaired," he said.

"Nobody should be getting behind the wheel of any vehicle if they've been drinking and over the limit – there are so many alternative transport options available in the CBD to ensure you make it home safely."

"We will continue to be on the lookout for behaviour that puts other road users at risk."

Police are currently running Operation Halo which addresses behaviour that leads to trauma among the vulnerable road users.

This includes vehicles blocking bike lanes and failing to give way at pedestrian crossings, as well as distraction offences, speed, and impaired driving.

Operation Halo, which continues through to September, is being conducted in areas of high traffic where lots of people are walking and riding – in Melbourne, Yarra, Port Phillip, Merri-bek, Stonnington and Boroondara. ●



PAPER REPUBLIC

COME AND VISIT OUR BRAND NEW STORE IN THE ICONIC ROYAL ARCADE IN MELBOURNE CBD

We proudly present a huge range of beautiful stationery, greeting cards, journals, gift wrap, pens, and unique items sourced from Australia, the UK, Europe, and North America. A lovingly curated collection of artisan goods to spark your joy.

This is the perfect destination for Melbourne locals, office workers, and visitors from anywhere and everywhere looking for a unique gift for a special occasion!

Come and see us at Shop 8-10 Royal Arcade Melbourne CBD or 638 Burke Road, Camberwell, or online at www.paperrepublic.com.au

(03) 9650 6524 | paperrepublic.com.au

Businesses fight against “bed tax” as government seeks to curb short stays

WORDS BY *Sean Car*
BUSINESS

The state government is considering a tax on short-stay accommodation in a bid to curb the state’s housing crisis, but Victoria’s peak tourism body and local businesses say the proposal would be a major impediment to the sector’s post-pandemic recovery.

Reports emerged shortly following the government’s announcement that it would no longer be hosting the 2026 Commonwealth Games last month that accommodation providers could be charged a \$5 tourism levy under a new proposal to tackle the housing crisis.

According to short-stay accommodation watchdog Inside Airbnb, more than 6700 apartments are currently listed on the short-term rental market in the City of Melbourne alone, with a high concentration of listings in Southbank, Docklands and the CBD.

While the state government hasn’t confirmed whether it will proceed with the new tax, in June the Victorian Greens proclaimed they had “secured a commitment” from the government on renter safeguards.

According to a statement released by the party, this followed weeks of “constructive negotiations”, in which the Greens demanded the government take action on the housing crisis to ensure their support for the *State Taxation Acts Amendment Bill 2023*.

As an outcome of the negotiations, Treasurer Tim Pallas wrote to the Greens outlining an urgent task force the government had convened to investigate the housing crisis and how it can be addressed.

This task force will actively consider all three of the renter safeguards put on the table by the Greens, including rent controls (such as a cap on rent increases), regulation of the short-stay industry, and “strengthening the state’s vacancy tax”.

Sam Hibbins, Greens MP for Prahran, which takes in a portion of Southbank, welcomed the move by the government arguing that “renters were ignored in the recent state budget.

“Without government action, rents are going to continue to go up and up, pushing renters into homelessness and housing insecurity,” Mr Hibbins said. “People who rent their home need urgent reforms to address the housing crisis and can’t afford another year of government inaction.”

But while any move aimed at

tackling the housing crisis has broad support, the Victorian Tourism Industry Council (VTIC) condemned the move as “purely and simply a bed tax on Victorian consumers” that unfairly threatens “traditional accommodation providers”.

VTIC CEO Felicia Mariani said it would be “rigorously advocating against any such measure that implements what constitutes a bed tax in Victoria”, labelling the proposal as an “outrageous impost” on the industry.

“Overnight stays are crucial to every sector of our industry and anything that adversely affects the attractiveness of our state in this regard is simply not acceptable,” Ms Mariani said.

“While the ‘tourism levy’ is being proposed to curtail the critical impact that short-stay/homestay accommodation is having on the supply of housing stock available for long-term rental purposes, this tax is being proposed on ALL forms of commercial accommodation, including traditional accommodation providers across our state.”

“VTIC has long acknowledged that measures need to be taken to address the shortage of housing for long-term leasing with the proliferation of private homes being made available on various short-stay platforms; but the traditional accommodation sector does not play a part in contributing to this issue. Traditional commercial accommodation does not remove private housing stock from the supply of long-term rentals and should not be wrapped up in this discussion.”

“While Airbnb has been quoted in the news as supporting a tourism levy in the state, let’s be clear, this tax does not affect their business model as it will merely be passed on by the property hosts for their guests to pay.”

“This is purely and simply a ‘bed tax’ on consumers in Victoria who are travelling around our state and will only serve to impact on Victoria’s competitiveness with other states at a time when we can least afford roadblocks to impede our recovery.”

Yarra River Business Association president Jeremy Vincent said any such proposal could threaten Victoria’s “competitive edge”.

“With many accommodation providers in our precinct, this change is going to have a significant impact on tourism. And, particularly given Victoria would be the only state in Australia to have such a tax, it means we would lose our competitive edge.”



▲ (Left) City of Port Phillip Cr Marcus Pearl, (middle) Fishermans Bend, and (right, L-R) Meredith Sussex with Lord Mayor Sally Capp.

Port Phillip councillor slams Lord Mayor over Disneyland in Fishermans Bend “thought bubble”

Former Port Phillip Mayor Cr Marcus Pearl has criticised Lord Mayor Sally Capp over her comments in support of a Disneyland theme park in Fishermans Bend, arguing it reflected “the City of Melbourne’s lack of commitment to the precinct”.

WORDS BY *Sean Car*
COUNCIL AFFAIRS

Cr Capp expressed her support of a push for a Melbourne Disney theme park in a *Herald Sun* article published on August 7, and argued Fishermans Bend would be “the perfect spot for it”.

“As Australia’s capital city of fun, of course we should have a Disney theme park in Melbourne! We’ve even got the perfect spot for it – Fishermans Bend,” the Lord Mayor told the *Herald Sun*.

“We saw with the Firefly Zipline just how much Melburnians love a thrilling ride. At Fishermans Bend, exhilarating rollercoasters could soar over the Yarra as part of a Disneyland, Magic Kingdom or Animal Kingdom.”

“Melbourne also offers visitors the best tourism experience available in Victoria, from world class hotels, unbeatable retail offerings and some of the best food and drink in Australia.”

“I know a Disney theme park in our municipality would be a huge hit with residents – myself included – visitors, students and traders.”

Fishermans Bend – Australia’s largest ever urban renewal project spanning a peninsula two-and-a-half times the size of Melbourne’s CBD – is locally governed by the City of Melbourne (north of the Westgate Freeway) and the City of Port Phillip to the south.

While the state government forecasts 80,000 residents and 80,000 jobs for the area by 2050, the project is currently the subject of an investigation by the Victorian Office of the Auditor General to establish whether responsible agencies are effectively delivering the *Fishermans Bend Framework*.

It follows a controversial rezoning of the precinct as “capital city” by former Liberal Minister for Planning Matthew Guy in 2012 and nearly a decade of reset

planning by the current Andrews Labor Government.

While development in the Montague precinct, which is serviced by two existing tram lines, is proceeding as forecast, the remainder of Fishermans Bend still awaits announcements on vital tram and train infrastructure.

Port Phillip councillor Marcus Pearl, who represents the Gateway Ward which includes Fishermans Bend, described the Lord Mayor’s push for a Disneyland theme park in the precinct as a “thought bubble” that detracted focus away from the area’s “critical issues”.

“I have always been a strong advocate for innovative ideas and development that fosters community growth and engagement. However, Sally Capp’s recent proposal for a Disneyland at Fishermans Bend, in my view, does not address the pressing challenges we are currently facing in Melbourne,” Cr Pearl said.

“It reflects the City of Melbourne’s lack of commitment to the precinct.”

“Fishermans Bend is at a critical juncture where key issues of public transport, open space, housing, and long-term planning require our undivided attention and focused effort.”

“While a theme park idea might add limited entertainment value, it distracts us from our focus on the urgent and critical issues that are fundamental to a thriving, liveable Fishermans Bend precinct.”

Cr Pearl also took aim at the state government, which he argued had “taken no action” to “implement public transport infrastructure, the development of open spaces, and has failed to release the all-important precinct plans for more than three years”.

“I implore the City of Melbourne to turn their attention and resources to addressing the lack of action from the state government on Fishermans Bend rather than thought bubble ideas,” he said.

The community is still awaiting the government to reveal its detailed plans for the area’s four mixed-use precincts of Montague, Sandridge, Wirraway (Port Phillip) and Lorimer, as well as the employment precinct (City of Melbourne).

Another former Port Phillip Mayor Bernadene Voss told *Southbank News* in July 2020 that the precinct plans “were done” and should be released for community consultation, but the government continues to delay their release.

The City of Melbourne continues to advocate to the state government for public transport to Fishermans Bend in the form of Metro 2 and a new tram line as outlined in its most recent 2023-24 annual plan. ●

**NINA
TAYLOR
MP**

Your State MP for **Albert Park**

Please reach out if you need any help.

NinaTaylorMP.com.au

✉ nina.taylor@parliament.vic.gov.au

☎ (03) 9646 7173

📍 46 Rouse Street, Port Melbourne VIC 3207

📱 **NinaTaylorMP**



ACTION not words.



▲ Greenline's eastern end has broad support.



▲ The western end towards Docklands has been met with a less positive response by stakeholders.

Locals, stakeholders endorse city section of Greenline, less convinced about Docklands end

Hundreds of residents and stakeholders have strongly endorsed designs for the eastern "city" section of the City of Melbourne's flagship Greenline project, but have expressed less certainty about the western "Docklands" end.

WORDS BY *David Schout*
COUNCIL AFFAIRS

Results from the council's latest engagement process on Greenline, a four-kilometre green trail set run along the Yarra River's north bank from Birrarung Marr to the Bolte Bridge, revealed a divide between the project's two ends.

A two-pronged survey that canvassed the thoughts of the general public (residents, workers, visitors) and stakeholders (including

business and community groups) revealed a strong endorsement of designs for the CBD portion.

Asked whether they would spend time in the proposed spaces (depicted by designers), more than 80 per cent of the 500-plus public respondents said they were "likely" or "very likely" to visit areas at Birrarung Marr and Batman Park.

Three-quarters of those surveyed also responded positively to the proposed designs for areas at Banana Alley vaults and Sandridge Bridge.

"Batman Park is very tired and bit sketchy now so this couldn't come soon enough," one respondent said.

"Sandridge Bridge and Banana Alley currently has a dilapidated urban feel, greening it will be a great improvement," another added.

This was reiterated in stakeholder responses, with more than half more likely than not to spend time in the three precincts in the eastern half of Greenline (Birrarung Marr, Falls and River Park).

However, those surveyed were less sure about the two precincts at the Docklands end, dubbed

Maritime and Salt Water Wharf.

Less than 60 per cent of public respondents said they were likely to spend time in the newly designed spaces directly opposite South Wharf — including space outside Crowne Plaza and the Mission to Seafarers — and further west at North Wharf.

Criticism focused on a lack of greenery and no proposed tree canopy.

"These are the least exciting to me, and I wouldn't spend much time here. The Crowne Plaza seems a bit sterile with all of those hard edges and lack of canopy and greenery," one respondent said.

"This is a very harsh environment that does not appeal. More trees and greenery are needed. Plants in rectangular boxes are not as appealing as a natural planting," another responded.

There was also concern about the lack of proposed economic activation.

"I feel this side of the river is more commercial and less tempting," one said.

"Crowne Plaza image reminds me of Docklands, which usually has less people around compared with in the image above

- why would people come here? Or how is this connected and convenient to access from other areas?"

The criticism of the westernmost Greenline precinct was even greater from stakeholders, who stated that the remote location made it tougher to attract visitors compared with the city end.

Councillors were expected to endorse a draft Greenline master plan at the August 15 Future Melbourne Committee meeting.

If approved, Melburnians will be invited to provide feedback on the proposed plans from August 16 to September 13, with feedback informing the final master plan to be released later this year.

"The draft master plan has been informed by extensive community and stakeholder engagement, and we're continuing the conversation, asking Melburnians for their views on this city-shaping project," Lord Mayor Sally Capp said.

Works at Birrarung Marr, which represents the first section of trail, are due to commence this financial year. ●

New park coming to Southbank with funding locked in

A \$1.5 million park is set to be created near the Australian Centre for Contemporary Art (ACCA), after the state government committed to funding the project in August.

WORDS BY *Brendan Rees*
PLANNING

The site at the forecourt of ACCA, which is described as a "desolate wasteland of granitic sand" at the corner of Grant and Sturt streets — and a hotspot for reckless hoons in recent months — will be transformed into a new green space, with construction expected to begin early next year.

State MP for Albert Park Nina Taylor confirmed the funding investment for the design and delivery of a green space, which spans more than a hectare, after the proposal was made in a commitment at last year's state election.

Ms Taylor joined residents and the City of Melbourne's Deputy Lord Mayor Nick Reece in celebrating the news at the ACCA site on August 8, with the new greenery anticipated to bring a vibrant addition to the Southbank neighbourhood.

The project will be undertaken in partnership with City of Melbourne, Creative Victoria and ACCA, in what will "provide locals with somewhere to connect with nature and their community".



"Today is just the first step in delivering what will be a fantastic open space for Southbank locals to enjoy," Ms Taylor said.

"This truly will create an immersive and connected space but also a beautiful green public open space for locals and visitors alike."

Cr Reece expressed his enthusiasm for the project, saying "it's going to be the most fabulous precinct".

"This is a wonderful day for Southbank. This is a day in which we see this granitic sand wasteland converted into beautiful green space for people of Southbank."

Community group Southbank3006 president David Hamilton, whose members have been campaigning for the park since June last year,

warmly welcomed the funding news, saying the new park would enhance the landscape.

"It starts to bookend the Arts Precinct," he said, which included ACCA and the future The Fox: NGV Contemporary building.

"It's a really vital point to be brought to life. It integrates with the arts community as well, which has become a far more important part of Southbank in bringing people together, and places for families and communities to grow."

"I just think it's fantastic to see council listen, government listen, and make something happen in this area."

Southbank Residents' Association president Tony Penna said it was a "delight" that funding had been invested into the new park.

"This site is rarely used by our local population owing to its current dusty, uninviting, texture. Southbank is short of green spaces and this transformation will be well received," he said.

Cr Reece said the council would work with the community to finalise the design, which he expected to begin "as soon as possible".

It would include working around "some constraints" such as the Burnley Tunnel that was situated below the site and owned by toll giant Transurban, which was contacted for comment.

"It may not be ideal for deep soil plantings but there are many clever things that we will be able to do through landscaping and other greening techniques to make this space an area a magnet for people," Cr Reece said.

The Deputy Lord Mayor said the new park would complement new urban gardens in the surrounding area, including the current construction of a new linear park on Dodds St, and future works to be delivered as part of the Melbourne Arts Precinct Transformation.

"When you put it all together it's going to add so much to Southbank and help deliver a final piece of the puzzle to make Southbank a great suburb and a liveable suburb."

ACCA's CEO artistic director Max Delaney said he was thrilled by the news.

"We are excited to continue to work with the City of Melbourne and Creative Victoria on creating a welcoming space on the ACCA forecourt, where our visitors and the community can come together for relaxation, connection and to enjoy cultural activities and events."

The park is being created as part of the government's \$7.4 million Better Parks and Playgrounds program. ●

BUSINESS



Celebrate International Dog Day with AC Southbank: a stylish pet portrait event

Attention all discerning doggos and their design-loving pawrents! Pet-friendly accommodation doesn't get more stylish than AC Hotel by Marriott Melbourne Southbank.

Bookings close Monday, August 14.
Scan the QR code to reserve your session:



A Pawfect Staycation

Why not make a weekend of it? Enjoy a pet-friendly staycation with the Close to Pawfection package at AC Southbank ...



About Kristoffer Paulsen

A professional photographer, Paulsen successfully brings a keen eye for design, style and emotion displayed through his work. An avid portraiture photographer, Paulsen also captures food, landscapes, venues and of course, pets.

About AC By Marriott Southbank

Nestled in sophisticated Southbank, AC Hotel by Marriott Melbourne Southbank is a Perfectly Precise™ design hotel for the modern traveller. Appointed with 205 elegant guest rooms and spacious suites, the hotel features a rooftop infinity pool and sparkling city views from every floor.

Designed focused yet welcoming and pet-friendly, at AC Southbank every moment has been designed, refined, crafted, and considered to create a seamless guest experience. ●

And here's the best news yet – to celebrate International Dog Day, this design-led hotel is hosting an exclusive one-off Dog Portrait event on Saturday, August 19.

International Dog Day Portraits

Prepare your pooch for a moment in the spotlight with an exclusive portrait session by acclaimed Melbourne photographer, Kristoffer Paulsen. A rare opportunity to have your four-legged companion professionally photographed in Paulsen's signature style, which beautifully captures their unique personality.

For \$300 per pooch, each session includes two web-resolution images delivered via email, along with a high-quality 8 x 11 portrait professionally retouched, printed, and elegantly framed, all with the convenience of home delivery by post. It's a keepsake that you and your furry friend will cherish for years to come.

While your pups are being pampered and feeling like superstars, you, their loving pawrents, will be treated to a complimentary Signature AC Gin and Tonic to enjoy while you eagerly await the beautiful images of your fur baby.

So, mark your calendars and prepare for a day of paw-fect pooch portraits at AC Southbank. With limited sittings available and previous events being a sell-out success, bookings are essential to secure your spot at this exclusive event.



Proving flexibility is key with short-stay



It will come as no surprise to learn the number of short-term rental listings in the City of Melbourne is on the rise.



WORDS BY Jack Hayes

Following a period of dormancy due to a global pandemic, short-stay listings jumped by 37 per cent over a 12-month period to 5051 listings in April, according to AirDNA data.

Lara Moro, Partner – Short Stay at property and financial advisory firm, The Hopkins Group, told *Southbank News* the appeal of flexibility and steady rental yields were key contributors to the growth.

“What we are seeing is what we call ‘lifestyle investment’. Owners may live down the coast or regionally, but they still need income to cover the cost of owners’ corporation (OC) fees and other expenses ... short staying the property can pay that off,” Ms Moro said.

“What short-stay rentals have revolutionised is providing owners with the opportunity and flexibility to rent their property for a period of time if they decide to go on vacation, to their holiday homes or even deciding to sell the property.”

According to Ms Moro, another incentive to short-stay apartments is a greater rental yield compared to long-term tenancies.

“Typically, the net-net figure, minus agent and OC fees and other expenses, for long-term traditional rentals will return 2 per cent on the investment for the year,” she said.

“By short staying your apartment or property, you will likely see double that figure, with our numbers indicating a return of four per cent per annum.”

“As The Hopkins Group offers both short stay and long-term traditional rental management services, we are able to provide impartial advice for clients to determine whether it is best for the owner to short-stay the property or to rent out their property as a long-term rental.”

Dispelling rumours or anxieties with short-stay listings both for owners, neighbours and tenants, is an everyday task for Ms Moro and her team.

By short-staying properties with The Hopkins Group, Ms Moro explained that clients were mitigating the risks sometimes associated with short-term rentals like nightmare tenants or unruly parties.

“There is no myth. Issues can arise from short-stays, but they can also happen in a tenanted apartment as well,” she said. “The great thing about our organisation, and short stays in general, is we have a lot more control.”

“With short-stay, you have the right to evict guests if they go against the short-stay policy, and by having a professional management company like The Hopkins Group, it means we can professionally manage and vet who comes in.”

“We have bespoke strategies tailored to the purpose of the property. For luxury properties and holiday homes to our owners, we might choose to only use limited platforms like Airbnb to be able to carefully vet and control who can stay. For our investor properties, we would have maximum exposure through all the online booking platforms.” ●

For more information:



THE NEW-LOOK 2023 SOUTHBANK DIRECTORY

For where to shop, eat, stay and play,
head to southbankdirectory.com.au

To list your business or for advertising enquiries,
Contact: jack@hyperlocalnews.com.au



The Gurrova Place project is the biggest mixed-use development in Council's history. Artist impression, subject to approvals and consultation



Market Square will be a key feature of the Gurrova Place development

It's one of Melbourne's most famous destinations attracting some 10 million visitors each year.

It's home to more than 650 small traders and family-owned and operated businesses.

It is the longest-surviving marketplace of its size and diversity in Australia.

It's a critical part of Melbourne's early development, and continues to play a central role in the city's cultural, business and social life.

Through the renewal of the Queen Victoria Market and surrounding precinct, the City of Melbourne is restoring the market's heritage while delivering modern facilities to make the market work better for traders, customers and visitors, and revitalising this growing part of the city.

Almost 40 per cent of the renewal program is now complete, with works continuing across the precinct.

It's not just a project about a market. It is a once in a lifetime, city-shaping urban renewal project that will deliver for the fastest-growing part of our city.

Queen Victoria Market will always remain a fresh food open air market and will retain its unique atmosphere, heritage and affordability.

In this special feature we take a look at the projects we've delivered and the ones to come that will ensure the future of our city's 145-year-old magnificent market for generations to come.

To keep up-to-date with works, visit melbourne.vic.gov.au/qvmrenewal

MARKET TRANSFORMATION PART OF HISTORIC \$1.7 BILLION PARTNERSHIP

Melbourne's beloved Queen Victoria Market is set to undergo a \$1.7 billion transformation.

The City of Melbourne will partner with Lendlease to transform the market precinct in what is the biggest mixed-use development in our history – attracting more customers and boosting business for traders.

Gurrova Place will be developed by Lendlease, following our landmark divestment of the Southern Precinct – generating more than \$1 billion in economic activity and creating more than 4,000 new jobs.

The once-in-a-generation project will enhance the traditional market experience Melburnians and visitors know and love – with iconic laneways and arcades to explore, a uniquely Melbourne retail offering, and new spaces to bring people together.

Gurrova Place will include build-to-rent apartments and 15 per cent affordable housing, student accommodation and a landmark office space across three buildings – all connected to the market by the soon-to-be revamped Franklin Street stores.

A new underground car park will provide 220 spaces for market customers, and 300 spaces on weekends. This is in addition to the 500 spaces already open in the Munro development – ensuring there will be no loss of parking.

Lord Mayor Sally Capp said the divestment of the Southern Precinct will transform the city's north with a vibrant new precinct bursting with uniquely Melbourne experiences “creating an enduring legacy for the Queen Victoria Market for generations to come”.

“Gurrova Place will enrich the traditional market offerings Melburnians and visitors know and love – attracting thousands of new residents, workers and visitors and boosting business for traders,” the Lord Mayor said.

“This globally-iconic precinct will be a place to celebrate – with spaces for events, world-class retail and new laneways and arcades to complement the beloved market experience.”

In consultation with Traditional Owners, Gurrova Place will pay tribute to the site's history. Gurrova means place of exchange or interchange, reflecting the purpose of the market.

The development has been designed by world-leading architects, and will set a new benchmark for sustainability – creating a precinct rich in biodiversity, while targeting Carbon Neutral Precinct Certification and 5 and 6 Star Green Star ratings.

Lendlease Managing Director Development Tom Mackellar said construction of Gurrova Place “begins the next chapter in the evolution of Queen Victoria Market”.

“Lendlease looks forward to working alongside the City of Melbourne, Scape and all project partners, and the community to deliver a reimagined precinct that preserves the heart and soul of this Melbourne landmark while ensuring it continues to thrive,” he said.

Gurrova Place will complement a range of projects we have already delivered in the precinct.

The divestment of the Southern Precinct follows an agreement with the State Government in 2014 to transfer the site to us to be sold, with all funds reinvested in the market's renewal.

Construction is expected to start next year with projects to be delivered in stages.

KEEP IN TOUCH

To stay connected with all the latest news from the City of Melbourne, follow us on social media and subscribe to *Melbourne News* at news.melbourne.vic.gov.au

Connect with us

[/cityofmelbourne](https://www.facebook.com/cityofmelbourne)
[@cityofmelbourne](https://www.instagram.com/cityofmelbourne)
[@cityofmelbourne](https://www.twitter.com/cityofmelbourne)



ADVERTISEMENT
Your City of Melbourne community update



Artist impression, subject to approvals and consultation

HAVE YOUR SAY ON OUR PLANS TO TRANSFORM FRANKLIN STREET

We're proposing to create a new link between the heart of the CBD and the Queen Victoria Market along Franklin Street, paving the way for the landmark Gurrova Place development.

Along with a new Market Square and plans for a multi-purpose civic building, the transformation of Franklin Street will continue our investment in the Queen Victoria Market precinct.

Early works on the first stage of this project are set to start later this year on William Street, which will begin the works to realign Franklin Street to unlock Gurrova Place.

We want to hear your feedback about the project which will provide more open space for the growing community and improve safety and accessibility for all road users.

The Franklin Street transformation project proposes:

- 1250m² of open space for residents, workers and visitors to enjoy.

- Turning four lanes of traffic into two, maintaining access for motorists in both directions.
- Better connections for people moving between the CBD and Queen Victoria Market.
- More trees and plants, providing 40 per cent more coverage and helping create a cooler environment.
- Improved safety for the community with new pedestrian crossings, lighting and reduced traffic flow.
- Stormwater flooding management with draining upgrades and water sensitive urban design solutions.

The transformation of Franklin Street is part of the \$100 million Transport and Amenity Program – a partnership between the City of Melbourne and the State Government.

Community members can have their say on the Franklin Street draft concept design until 23 August at participate.melbourne.vic.gov.au



An artist's impression of a revitalised Franklin Street

NEW FOOD HALL

Construction of the market's exciting new dining experience is nearing completion.

Set to open later this year, the new Food Hall will offer customers a contemporary place to eat, meet and enjoy the market atmosphere.



QUEEN STREET PLAZA

Through the renewal program we created a new pedestrian-friendly plaza in Queen Street, between the toilet block and F to M sheds, with more trees, more shade and more seating for customers to stop and enjoy the unique market atmosphere.

Completed in 2019, together with the visitor hub and additional retail locations in String Bean Alley, the plaza welcomes visitors entering from the south and draw customers into the heart of the market.

MORE SUSTAINABLE OPERATIONS

Traders and customers told us that making Queen Victoria Market more sustainable is important.

Solar power, stormwater harvesting and an on-site organic waste recycling facility are just a few of the projects proposed for the renewed market precinct.

We've already powered up more than 1,550 solar panels to cut carbon emissions and reduce the market's electricity bill.

At the project's completion, the market will be powered by 3,765m² of solar panels.



HERITAGE SHED RESTORATION

We're investing more than \$30 million to restore the market's culturally and historically significant open air sheds, securing them as the unique backdrop of the market experience.

Ten of the 12 sheds have been restored since 2020. This year, the heritage shed restoration program moves to the final stage in Sheds H and I, with works to repair and strengthen structural elements, painting, new insulated roofing to improve the temperature under the sheds, and upgrade of common area services.

MUNRO DEVELOPMENT



Right on the doorstep of Queen Victoria Market, at the corner of Queen and Therry streets, will be the city's largest new library and community hub.

Works to fit out the new space have begun and are due to be completed later this year.

The development will include a library and community hub, family services, 2500 m² of new open space and laneways, new hospitality and retail stores.

Affordable housing apartments and 500 underground car parks for market customers opened in December 2021 and boutique hotel and apartments for long-term rental were completed in November 2022.

SAFETY PART OF STREETScape WORKS

As the Munro development nears completion, the final stage of works involved upgrading the streetscape, including the roadway, in front of the development along Therry Street and Queen Street.

As a key gateway into the market, the upgrade of the streetscape will greatly improve safety, create a more welcoming and pedestrian-friendly street with wider footpaths, more greenery, lighting and shade for customers to stop and enjoy the market atmosphere.

IMPROVING MARKET FACILITIES

Planning and heritage permits have been approved for two new purpose-built facilities in Queen Victoria Market.

Construction of the Trader Shed and Northern Shed will deliver essential services for traders and upgraded facilities for all market workers, shoppers and visitors.

STRING BEAN ALLEY

Twenty-six independent traders in bespoke shipping containers now call String Bean Alley home and provide a uniquely Melbourne shopping experience in the heart of the market.

String Bean Alley and the new pedestrian plaza on Queen Street are part of a series of key market improvements identified in the Queen Victoria Market Precinct Renewal Master Plan. These projects directly address feedback from customers and traders and as well as recommendations from the People's Panel.

Arts Precinct

Antartica comes to Chunky Move for Now or Never

The City of Melbourne's Now or Never festival makes its debut in August with an exciting array of digital art and thought-provoking events breaking out right across the city, with two "sonic trips" to the Antarctic taking place at Southbank's Chunky Move.



While events will take place at venues at all ends of the city, from Docklands to North Melbourne and the CBD to Carlton, Southbank's Chunky Move will host two separate but similarly immersive experiences in late August – *Array* and *Polar Force*.

Running from August 31 until September 2, *Array*, led by Speak Percussion, will take guests into a "sonic trip deep into the bracing polar conditions of the Antarctic" as recordings from scientific instruments are used to provide an eight-channel, immersive sound installation that simulates the experience of a research station in the remote Antarctic deserts.

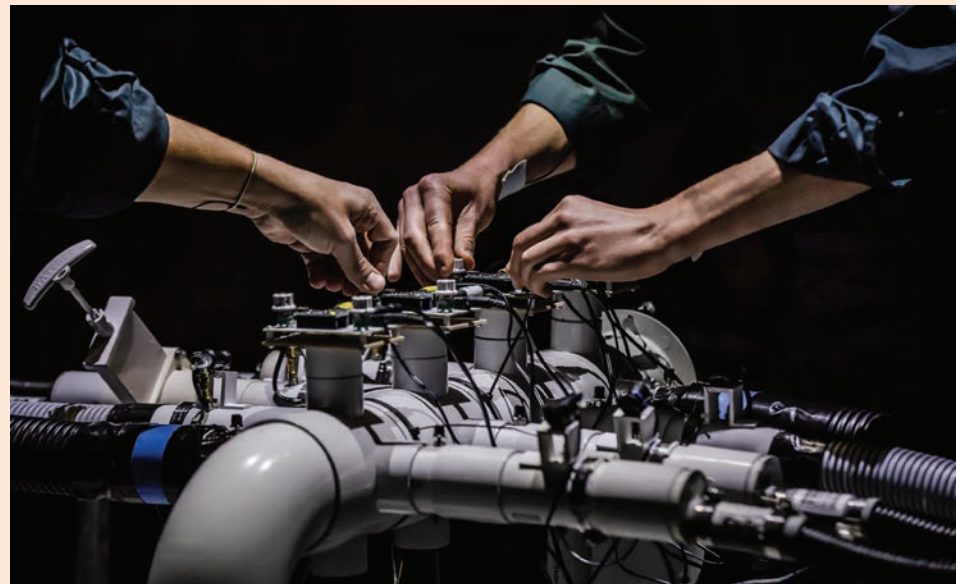
Field recordings are layered with sound textures, rhythmic cycles, and resonances to reproduce the sounds of this unique environment in one of the most extreme places on earth.

Speak Percussion will captivate audiences again with *Polar Force* (August 30 and September 1 and 2), which transports you back to the Antarctic, where the authentic field recordings capture its mesmerising sounds. Within an inflatable installation acting as your temporary shelter from the elements, prepare to encounter a sensorial symphony of sound, wind, and light.

This extraordinary sonic environment is brought to life through instruments that mimic ice as it fractures and melts.

Polar Force dissolves the boundaries between trailblazing research, treacherous expeditions, and mysterious undertakings, prompting us to contemplate our own fragility and our profound connection to nature in moments of isolation. After dazzling audiences all over the world, this extraordinary performance returns to Melbourne for an exclusive limited season at *Now or Never*. Audience members are free to come and go within the session time, subject to availability within the installation. Learn more at: speakpercussion.com ●

For the full program:
nowornever.melbourne.vic.gov.au



Melbourne will soon be transformed with large-scale outdoor sculptural installations and projections, an immersive 360-degree pop-up dome cinema and a slew of boundary-breaking performances that explore the realm where technology and art converge.

From August 17 to September 2, the blockbuster event will bring together more than 300 local and internationally-renowned artists, composers, change makers and innovators – with a vibrant program featuring 18 Australian premieres and 20 festival exclusive commissions.

More than 200,000 people are expected to fill venues and precincts across the city for the 17-day festival, and enjoy more than 70 left-field music performances, immersive digital art installations and daytime talks.

The inaugural *Now or Never* program is set to take audiences on a journey to the intersection of art, ideas, sound, and technology, addressing the central questions of our future in the context of the present moment.

Violin virtuoso and piano prodigy join forces at Melbourne Recital Centre

Feted for his effortless renditions of the otherwise impossible – from Paganini and Locatelli to Brett Dean – Ilya Gringolts' performances and recordings have established him as one of the quintessential violin virtuosos of our time.

He has performed as soloist with the world's leading orchestras, including a recent collaboration with the Australian Chamber Orchestra. As part of Melbourne Recital Centre's newly established *International Classics* series, formerly *Great Performers*, Gringolts joins pianist Aura Go for the first time since collaborating at the 2016 Kuhmo Chamber Music Festival in Finland. Their shared passion for contemporary music unites them here in the Australian premiere of modern master Wolfgang Rihm's *Phantom und Eskapade*, dedicated to Anne-Sophie Mutter. Rihm's invocation of the fantastical alludes to the Schumann sonata and its preoccupations with imagination and myth. The Mozart sonata will unveil the crystalline sounds of Gringolts' Stradivarius violin.

Australian music, arts and culture magazine, *Limelight*, said, "it's difficult to imagine a more complete violinist than Ilya Gringolts," while major German newspaper, *Süddeutsche Zeitung*, lauded the virtuoso by exclaiming, "one can hardly play the violin more expressively and uncompromisingly than Gringolts".

Intimate, moving and awe-inspiring, the *International Classics* concert experience offers audiences the opportunity to witness the compelling virtuosity of artists from across the globe as they perform a curated program of music in

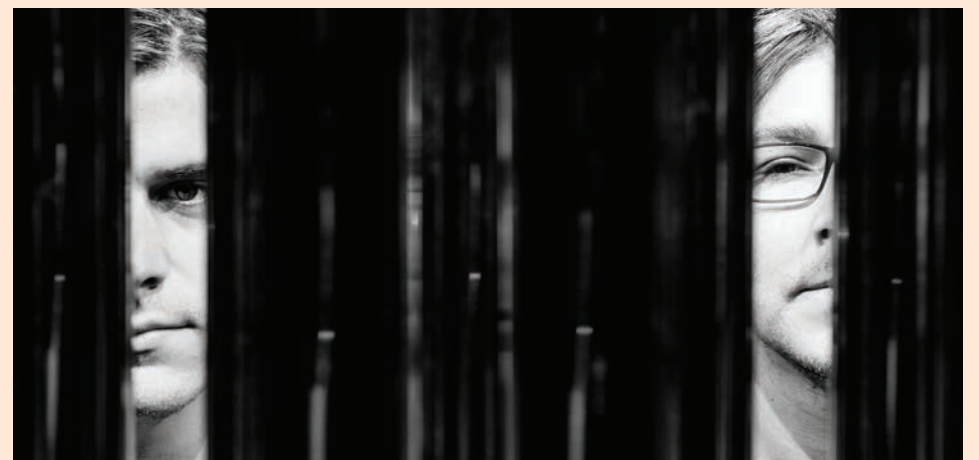


an award-winning venue specially designed for classical music to soar.

"In this series we showcase an outstanding lineup of musicians from around the world, who make the most intimate recital into epic memories," director of programming Marshall McGuire said.

"These are artists at the top of their game, delighting and inspiring audiences in great venues of the world. There's no magic at work here – it's simply incredible artists having a conversation with an audience, in Australia's best recital venue." ●

For more information:
melbournerecital.com.au



Tubular Bells to ring out again

Tubular Bells for Two is returning for a final Melbourne performance, with the live arrangement of Mike Oldfield's seminal 1973 masterpiece to be staged at Arts Centre Melbourne's Playhouse on September 8 and 9.

Coinciding with the album's 50th anniversary, the show promises to be an arresting rendition of the musical magnum-opus that sold more than 40 million copies and featured in the cult-classic horror film, *The Exorcist*.

According to Daniel Holdsworth, when he and fellow musician Tom Bamford first approached Oldfield with an idea for a performance that involved the two artists spread across 20 instruments for more than an hour, Oldfield "thought [they] were crazy".

Described as "mesmerising" by the *Sydney Morning Herald*, Holdsworth noted that the show



"requires such intense rehearsal" that the pair "need to get into a zen-like state".

"It is so demanding as a performer because we need to keep track of so many different parts," he said.

"You just need to trust the process. Trust that your hands and feet know what to do."

"As soon as we play that first note, you can't stop, it's a journey to the very end, regardless of what happens." ●

For more information:
artscentremelbourne.com.au

PROFILE PICTURE
PHOTOGRAPHY STUDIES COLLEGE

ELLINA DEN TOOM



How a love for travel led to a career of “capturing moments in time”

When it comes to travelling there is nothing Ellina den Toom loves more, although capturing her adventures on camera is a close second.

WORDS BY *Kaylah-Joelle Baker*

Before studying at Photography Studies College (PSC) Ellina would transform into a budding photographer on her travels, making sure she had physical memories to take home with her. When COVID hit and Ellina's travels were brought to a halt, she decided it was the perfect time to study photography at PSC, majoring in commercial photography. "My life was on hold, and I couldn't travel anywhere, and PSC stood out to me [because of] the fact that the teachers are still working in the industry and could give me a lot of information and support," Ellina told *Southbank News*. Now, in between jet-setting off overseas, and thanks to PSC, Ellina has been able to experiment with her fondness for "capturing moments

in time" right outside her doorstep, within the local community. During a commercial photography lesson, Ellina and her class were taken out by their teacher to the local FitLab gym to learn the ins and outs of location shooting. "[We were taught] all about shooting on location, which was a really amazing experience and I got to take some portraits of people who work there," she said. "I also did some volunteer work through PSC for the Port Phillip EcoCentre's *School Sustainability Festival* which was an amazing opportunity. Being able to work with people in the community, through beautiful volunteering [activities], has been great." Looking back on her past few years of study, Ellina has found many shoots to be proud of, although her favourite has been a cookbook she created for an assignment requiring students to produce a photo book. "I am most proud of my work with chef [and good friend] Akela Nevelli; we put together a beautiful cookbook called *Vizio Capitale – Deadly Sin*," she said.

"It's this beautiful book of Akela's food and delicious meals from his Italian culture, and it has a lot of travel images as well. It includes all the things I love most, which is eating, celebrating friendship, and travelling." "Deep down inside of me I always wanted to do a cookbook as I have a lot of friends who cook and we love to spend time together over beautiful dinners, and I wanted to represent that." Upon graduating, Ellina hopes to continue in travel photography, focusing on beautiful landscapes, cultural food, and fashion. "PSC has been great at pointing me in the right direction, and [attending the college] has been one of the best decisions I have made in my life," she said. ●

For more information:
ellinadentoom.com
[instagram.com/ellinadentoom](https://www.instagram.com/ellinadentoom)



“Hello, Possums!” once more

WORDS BY *Edmund Coleman*

Following the death of Barry Humphries in April this year, the world mourned not only for the giant of Australian character comedy, but also his darling creation: Dame Edna Everage. Costumes worn by Dame Edna in her heyday are now on display at Arts Centre Melbourne's Smorgon Family Plaza until August 30. The free display was curated from the Australian Performing Arts Collection, and as well as classic costumes donned by the Dame, the exhibition includes programmes, screenplays and artefacts from Humphries' ascendancy. Arts Centre Melbourne's head of curatorial Margot Anderson said the display aimed to evoke a sense of nostalgia while also exploring the rise of the comedian. "We chose three costumes that have been favourites with visitors in the past. Barry Humphries donated a rich selection of Edna's costumes over many years creating a lively record of her rise from humble beginnings in 1950s Moonee Ponds to international 'megastardom' in the 1990s," Ms Anderson said. "These costumes all have Edna's trademark pizzazz and three-dimensional quality that would have made her performance on stage even funnier." "In addition to the costumes, we've selected items from Barry's extensive collection including programmes, photographs, and correspondence that capture the many facets of his career." ●

For more information:
artscentremelbourne.com.au



Image by PSC Student Lewis Cook

PHOTOGRAPHY STUDIES COLLEGE

OPEN DAY

Come along and experience the magic of photography
 Tour our Sth Melbourne campus
 Experience live photo shoots
 Meet teachers, students and alumni
 Attend course & career Q & A sessions

13 August 2023 10-2

✉ study@psc.edu.au or ☎ 9682 3191



REGISTER HERE

PSC.EDU.AU
 ✉ study@psc.edu.au

☎ **9682 3191**



Photography Studies College (Melbourne) is a division of Photography Holdings Pty. Ltd. ACN 009 525 705 | ABN 68 860 041 977 CRICOS Provider No 00257G | TEQSA Provider No 12200 | RTO Code 0111

Flood warning: Southbank at “high risk” by 2040

Continued from page 1.

A Beulah spokesperson said they had designed the ground floor to levels advised by Melbourne Water based on their modelling of “extreme storm requirements and long-term sea level rises”.

Beulah has previously noted that Barangaroo in Sydney’s Darling Harbour, Queens Wharf on the banks of the Brisbane River and Elizabeth Quay in Perth have all been built with basements in waterfront locations.

According to Victoria State Emergency Service (VICSES), Southbank is prone to flooding with City Rd, Clarendon St, and Kings Way being particularly susceptible during storm events.

A notable incident on December 15, 2018, brought torrential rain to Southbank and the CBD, causing wide-spread flash flooding, resulting in water at car door level on some streets and disruptions to public transport.

In another event in June 2014, extreme winds of more than 100km/h forced tidal waters back up the Yarra River, resulting in riverine flooding



▲ Southbank Residents’ Association president Tony Penna.

in Southbank that saw footpaths and bike lanes underwater and the river coming close to touching the bottom of the Queens Bridge.

Southbank Residents’ Association president Tony Penna, who owns several properties in Southbank, said the report was worrying but questioned “as individuals, what can we do?”

“We need to put our faith in the powers to be – in the authorities – and trust that they are going to mitigate that risk,” he said.

“I think everyone is concerned whether you’re a property owner or not, it’s significant that 16,000 properties have been earmarked.”

In the report, Professor Tom Kompas of the University of Melbourne said economic damages from sea level rise/storm surge to coastal areas, which was estimated at \$691,715,913 for Southbank and \$136,250,932 for Docklands by 2040, “are more than enough to trigger considerable financial instability”.

Dr Boxshall said spending on adaptation over the next two decades could help reduce future risk and “save significantly on the estimates of future costs”. ●



▲ Major flooding on City Rd in 2018.

E-scooters and the City of Melbourne

So, where do we currently stand on the use of e-scooters in our city?

WORDS BY Stan Capp & Tom McNair
SAFETY & SECURITY

The feedback that is received from many of our residents is that e-scooters are the most prevalent cause of distress when walking our streets. Let me quote from a resident of Docklands, Tom McNair who stated ...

“My wife, grand-daughter and I were inches from a potentially fatal impact by an e-scooter riding at high speed on the northern footpath along Siddeley St at 9.30pm on Thursday, June 15 as we rounded the eastern corner of the former Police Headquarters in Flinders St. We felt the wind of the rider and machine as he flew past, not even slowing or stopping to see if we were injured, let alone to apologise. We screamed!”

“A one-off? If you ask other street users then perhaps not. You will invariably find stories of near-misses and evidence that actual injuries and verbal interactions are increasingly common.”

Clearly, there is a problem with riders chronically ignoring basic safety rules with poor helmet use, double riding, use of footpaths often at speed, riding in opposite directions on one-way streets, and, of course, random parking that obstructs access, particularly for elderly and disabled pedestrians.

My personal experience of reporting an incident with an aggressive e-scooter rider who with his co-rider narrowly missed me was to be told by Victoria Police to advise the City of Melbourne as the police had no resources to pursue any lines of enquiry. I think this is a very reasonable position and our police have many other higher priority things to do that already stretch their resources.

The obvious conclusion is that our issues with e-scooters will continue until the rules are made clear, riders are educated, and enforcement can be expected.

At a minimum, all e-scooters should be subject to geo-fencing that prohibits their use on footpaths in the same way that other areas are currently restricted e.g., the Bourke Street Mall, Carlton Gardens, etc. This is good technology that should be mandated.

Discrete areas need to be established where all e-scooters must be returned to, with appropriate penalties applied to non-compliant users.

Authority needs to be given to a workforce to fill the void unable to be met by our police that has powers to fine riders who put at risk their own personal safety and that of the public. If riders break the law, there should be a reasonable expectation that they will be prosecuted. The co-operation of the commercial operators would facilitate the identification of the rider at any designated time and date.

No surprise to me that a vote in Paris rejected the use of e-scooters and I would be pretty confident that a popular vote in Melbourne would produce a similar outcome. Maybe that’s why no-one in authority has pursued it. In the meantime, the ubiquitous e-scooter will have to be managed throughout this “trial” period.

Following his experience, Tom McNair has crystallised all these thoughts and more in his following recommendations. He states that the commercial e-scooter trial should

be discontinued and not allowed to resume until:

- The e-scooter cannot be operated until the hirer has electronically agreed to use the e-vehicle in accordance with the rules governing its use, each time the scooter is hired.
 - Each e-scooter employs technology that prevents it being used on footpaths.
 - Each e-scooter is equipped with a safety-helmet and with technology that prevents the e-scooter being used without the helmet firstly being disengaged from an electronic clip and which can then detect when that helmet is no longer in close proximity to the vehicle – i.e., the rider must have the helmet belonging to the bike on his or her head and not discard it before the ride starts or is in progress.
 - The e-scooter must be equipped with technology that ensures that the ride only ends when it is parked correctly in a designated parking zone with the helmet belonging to the vehicle re-attached.
 - The e-scooter must be equipped with the technology that detects when more than one person is using the vehicle and disables the vehicle until a single rider is operating the machine, preventing pillion riding.
 - The e-scooter must be equipped with technology that restricts the speed of the vehicle to 20kmph on permitted city streets and designated bike paths and restricts its speed to 10kph on designated shared paths and public spaces where they can operate.
 - E-scooters must be fixed with lights and horns (not bells which hearing impaired cannot hear).
 - E-scooters must be fixed with technology that prevents their use in parkland or other designated public places (such as Federation Square).
 - The operators of the e-scooters must provide e-training in the safe use of the vehicle and the rules governing the use of the vehicle before a new user can enable the machine, with unsafe usage detected. Technology must be provided which limits the speed of vehicles to 10kmph until every hirer has completed 10 hours of safe and rule-compliant use. Technology must require that the hirer electronically agrees to abide by the terms and conditions.
 - Commercial operators of e-scooters must be required to provide e-scooter parking stations around the city in which they are allowed to operate, and a hire must start and end at a designated e-vehicle park. Each park must have signage explaining the rules for use and safe use of e-scooters and bikes. The commercial operators must be required to provide parking of their e-scooter fleets off footpaths and public places.
 - The council and the commercial e-scooter operators must provide financial resources to fund employment and equipment of traffic officers or protective officers for the enforcement of rules for e-vehicle use and enforce consequences for non-compliance with meaningful penalties and fines.
 - The parameters of the required technology are set out above. Commercial operators that are unable to comply must be excluded from City of Melbourne and other participating cities.
 - All cities and towns that allow commercial e-scooters providers must set and maintain the same operating requirements.
- Tom also supports the same standards be applied to commercial e-bikes. Certainly, some food for thought. ●



Gardener taking on Australia-first pollinator program wins award

WORDS BY Brendan Rees
ENVIRONMENT

A passionate South Melbourne resident who is leading a charge to create an Australian-first wildlife corridor joining the Royal Botanic Gardens to Westgate Park in Port Melbourne has won a prestigious award.

Nature enthusiast Emma Cutting is behind the eight-kilometre community-driven Melbourne Pollinator Corridor (MPC) that aims to pollinate insects while transforming “barren, under-utilised pieces of public land and public private land” into vibrant green spaces by using a variety of native plants.

“The MPC is about strengthening and deepening connections within and between communities of humans, plants and critters,” Ms Cutting said, who also founded a local community greening initiative called the Heart Gardening Project.

“Through caring for our public land and putting nature first, we are creating systemic change in public realm around how these spaces are used, designed and maintained.”

For her efforts in spearheading the program, Ms Cutting was awarded a Kenneth Myer Innovation Fellowship, which supports the development of breakthrough solutions to Australia’s most pressing social and environmental challenges.

Upon hearing the news of the award, in which each recipient receives \$140,000 as part of their 12-month fellowship, Ms Cutting said it was “immense relief!”

“We now have this golden opportunity to really gather momentum – we can continue setting up The Heart Gardening Project to be a sustainable charity and continue developing

the Melbourne Pollinator Corridor including expanding our awesome volunteer group and creating more gardens.”

With the help of volunteers, Ms Cutting said one of their main objectives for the pollinator corridor was to help remind people “that when we care for and connect to nature we are, at the same time, caring for and connecting to ourselves”.

She said they were aiming to plant 200 indigenous-focussed gardens with 20 being created so far and “10 more on the go,” that would cover a space equivalent to more than six tennis courts.

She said another goal was to create 200 gardens in the next two years.

Asked what had inspired her, Ms Cutting said there was plenty including “how isolated Westgate Park is” and “how there were some small existing green patches that were good for native pollinating insects, but they were disconnected”.

Ms Cutting said locals keen to create their own MPC garden could apply for one of 40 corridor kits worth about \$600 each, which are being given away.

Kits include a voucher for 50 indigenous plants, a \$50 voucher for a local nursery, a Melbourne Pollinator Corridor book by Ms Cutting, and “lots of tools” thanks to charity Plantfulness and more.

Eligible applicants need to live in the Melbourne Pollinator Corridor zone, and have an appropriate site with some sun, which can be private land but needs to be visible from the footpath. The garden needs to be completed by the end of this year and then maintained. Applications close end of August. To apply, visit:

theheartgardeningproject.org.au/mpc-locals-program ●

Joining the electric vehicle bandwagon



In 2022, the sale of electric vehicles (EVs) in Australia accounted for only 3.8 per cent of total sales. However, that number is tipped to soar over the coming years.



The International Energy Agency recently released its 2023 global report and predicts that sales of electric vehicles globally will reach 35 per cent of all sales by 2030.

One of the main factors holding Australia back from a larger uptake is due to a lack of available infrastructure.



However, owners' corporations (OCs) can play a leading role in rectifying that particular issue. Apartment building carparks (as well as commercial building and shopping centre carparks) are perfectly suited for adaptation to EV charging outlets.

Some buildings can opt to install a handful of EV charging outlets in visitor parking spaces for common use (and implement a billing system) while other buildings could adopt the functionality of having an EV charger installed in each parking space, with the ability to have the electricity connected to their own individual

meters and billed at the end of each quarter.

Those buildings that already have an embedded energy network are well placed to implement a full-building upgrade.

The upgrades to the carpark are not without additional complications, however. There is a small additional risk of fire due to the presence of EV lithium batteries and on-site lithium battery storage units.

OCs also need to be aware of the hazards involved in the parking and charging of the EVs on common property, and because of this increased risk, it may be the case that an upgraded sprinkler system or water supply system would be required to be installed to certain areas of the carpark.

All of this can be adequately addressed by a specialised consultancy or project manager that can assist with these investigations and build into the overall costs of the project.

While most new buildings now provide some EV charging capacity, older buildings should start to engage owners to include the upgrade in forward budgeting and planning. If that means planning for a shared EV station located on common property, a suitably qualified expert

should be engaged to determine the appropriateness and type of station and the electricity load capacity of the building.

OCs should also consider where the appropriate locations for the EV charger stations in the carpark would be, how the costs will be passed on to users, how to manage the daily operation of the EV charger stations (maximum time limits) and the cost of maintenance and repair.

Certainly, we are well placed in Australia to take advantage of a high uptake in EV sales, especially with high energy costs and high petrol/car maintenance costs. As always, the buildings that continue to innovate and keep pace with technology will hold the most value. ●



Tom Bacon

TOM BACON IS THE PRINCIPAL LAWYER OF STRATA TITLE LAWYERS. TOM@STRATATITLELAWYERS.COM.AU

SOUTHBANK SUSTAINABILITY GROUP

Preparing for spring planting

The cooler weather has not dampened the enthusiasm of the members of the Southbank Sustainability Group (SSG) as they get the community garden ready for spring planting.



WORDS BY *Maria Tarrant*

Members have been busy cleaning up the beds and planter boxes, refreshing the soil and deciding what to plant. So, the garden beds may be a little bare for the next few weeks but watch out for the spring planting.

We love to see Southbankers enjoying the herbs, greens, and other vegetables in the garden beds for their personal use. Look for the green painted stones that let you know the plants in the garden bed are ready for harvesting. As the photos show, we have plenty of rocket, pak choi, tatsoi and mizuna in the garden beds ready now to harvest.

We would love to hear from you if there is something you would like to see planted in the garden over the next few months. Simply email us at the address at the bottom of this column.

For those of you interested in growing plants on your balconies and in other small spaces we have a 90-minute workshop coming up on Saturday, August 12 at the Boyd Community Hub beginning at 11.30am.

Sally and Ash from Ploterra will be conducting the interactive workshop on Planting for Small Places. You will learn how you can overcome some of the common small spaces or balcony gardening challenges.

The City of Melbourne has provided support for the event which is free. Numbers are limited and you will need to register via Eventbrite:



Just to change direction for a moment ... some members of the SSG are now back in the office and at a recent event were discussing what they can do to improve sustainability in their offices.

You may be interested in some of the ideas they discussed, which included carpooling, competitions to reduce paper use and paper waste, asking their team members for ideas, reducing the brightness of their computer screens to reduce electricity use, asking for sustainable coffee pods in the common kitchen and

eco-friendly cleaning products for the kitchen and bathroom, as well as carrying out an audit of what plastic is used in the workspace and how it can be replaced with a more sustainable approach. These ideas may be useful in your workplaces as well.

The SSG meets every second Saturday morning at 10am to do some gardening and catch up with other Southbankers who are interested in living more sustainably. The August dates for these meet-ups are August 5 and 19. Everyone is welcome to come to get their hands dirty or share thoughts and ideas.

Visit our Facebook page if you are looking for information on how to live more sustainably. There are guides on subjects as diverse as sustainable travel, reducing the impacts of your pets on the environment, volunteering and food composting.

About the group

SSG is a solutions-focused community group of Southbank residents working to bring positive change in sustainability practices. Reach us at southbanksustainability@gmail.com or facebook.com/SouthbankSustainabilityGroup

If you are interested in getting involved with SSG, send us an email or come to one of the upcoming meet-ups. ●



C9 Chocolate & Gelato

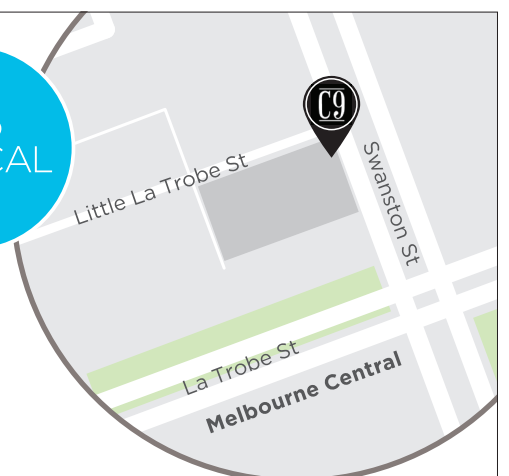
C9 Chocolate & Gelato offers premium quality house-made gelato, desserts, and treats for every chocolate lover.

If you're craving something sweet, give C9 dessert bar a try and experience our irresistible desserts for yourself!

📍 397 Swanston St, Melbourne

www.c9gelato.com.au

📷 @c9chocolateandgelato



CYP-BS00371



MAGGIE & ANA

We're going to the theatre on Saturday night, then just heading to a barbecue and chilling out at home.



EMILY & WILL

We're driving down to Mornington over the weekend and going to head to the Hot Springs – that's the plan.



MARINE

I'm not too sure actually, I'll probably just be working. I work weekends, so I generally don't have much else to do but work.



RILEY & MARCUS

(Riley) I'll probably be out gardening, and that's about it I think. (Marcus) I'll be in the kitchen and doing some baking over the weekend. ●

Faces of Southbank

Question: How will you be spending your weekend?

WE LIVE HERE

Renaissance of reason

The We Live Here Forum on housing affordability and short-term rentals showed that there are solutions to the crisis, and that people with different perspectives can work together to achieve results.



Solicitor Tom Bacon from Strata Title Lawyers moderated a lively community discussion with MPs Ellen Sandell (Melbourne), and Gabrielle De Vietri (Richmond), and Deputy Mayor of the City of Yarra Edward Crossland, and resident activists from St Kilda and the Yarra Valley. Backed by publicly available data, the nexus between short-stays and the housing crisis was proven.

MLCs Sheena Watt and Evan Mullholland were unable to attend, as were all Melbourne City Councillors. We Live Here has accepted an invitation to meet with Evan Mulholland, and we will resume our regular meetings with the Consumer Affairs office, now part of the Government Services cluster.

The panellists put forward constructive action plans, and with the current complexion of the state parliament upper house, we feel the future is positive.

Our Yarra Valley resident activist also showed how statistical information can be used to support genuine solutions to the housing crisis.

Our resident activist from St Kilda reported on milestone achievements this year: the Municipal Association of Victoria adopted a policy of regulating short stays, and the association will advocate the government for uniform change across the state. At least four councils

have already introduced self-funding registration schemes.

The resident's analysis also showed that of 50 "short-stay" cases brought before VCAT by aggrieved residents, none had orders issued against the short-stay operator.

Tom Bacon offered explanations: either the short-stay legislation was incompetently drafted, or it was designed to fail.

Let's fix this, and fast. Registration of short-term rentals can deliver immediate results. If your MP is unaware of the issue, please write to them. Write to your city councillors too. ●



Barbara Francis & Rus Littleton

CAMPAIGN@WELIVEHERE.NET



STATE MP

Focus on housing/rental/reform trajectory

We know there is no more important issue anywhere in the state right now than housing.

WORDS BY *Nina Taylor*
STATE MP FOR ALBERT PARK

Whether it's housing supply, first homebuyer affordability, social housing or renters' rights – the housing system needs reform. We're working hard on the package and will have more to say in due course.

We know that increasing housing supply is a critical part of improving housing affordability.

The Andrews Labor Government stands for more social and affordable housing with \$5.3 billion invested in the Big Housing Build – the biggest single investment in social and affordable housing of any state and territory. The Big Housing Build will deliver more than 12,000 homes.

Currently, more than 7600 social and affordable housing homes are being built across the state. More than 2800 are completed – with thousands of Victorians who needed them already moved in. In addition to the Big Housing Build, there are thousands of homes being delivered across the state through other capital programs. As part of the Big Housing Build, we will secure 2000 homes for Victorians who have a mental illness, 1000 homes to provide safety and security for survivors of family violence, and 10 per cent of new dwellings will support Aboriginal Victorians to have culturally safe, self-determined housing options.

We also recently announced the provision of a \$1 billion Regional Housing Fund to deliver more than 1300 new social and affordable homes across regional Victoria. We know the need is great and urgent – which

is why Homes Victoria is employing multiple approaches to boosting the supply of social and affordable homes throughout the state.

For instance, Homes Victoria is delivering the Affordable Housing Rental Scheme – which is set to deliver around 2400 affordable rental homes to address affordability pressures in metropolitan Melbourne and regional Victoria.

Under the Affordable Housing Rental Scheme, fixed-term rental agreements of three years will be available to low to moderate income households in metro Melbourne and regional Victoria who meet income eligibility criteria.

Our housing projects provide housing on a continuum from delivering a Housing First approach for people experiencing homelessness, to stable and secure housing for low-income Victorians, right through to affordable housing options for low to moderate income Victorians including essential workers. This is important because we know that vacancy rates in Melbourne and regional Victoria are very low. We know that housing affordability is at a critical point. These are significant investments that are transforming people's lives and are making a very real difference.

We have also delivered more than 130 rental reforms – the biggest change to the *Residential Tenancies Act* in more than two decades.

Under our reforms, rent can only be increased once every 12 months. Our reforms also introduced rental minimum standards that will provide safer, more energy efficient housing for renters. We know there is more work to be done to ensure the property and rental markets are working effectively for both renters and rental providers.

Those on the other side continue to block the \$10 billion Housing Australia Future Fund, preventing social and affordable homes from being built in Victoria. We hope that compassion and common sense will prevail on that front. ●

METRO TUNNEL



Metro Tunnel achieves major milestone with first test trains

The first test trains have started running through the Metro Tunnel, marking a major milestone for the project and the beginning of a rigorous, months-long testing phase.

Trains passed through the eastern entrance of the Metro Tunnel at South Yarra in the early hours of July 25, stopping at Anzac Station.

The journey was years in the making and marks the start of the project's next major testing phase inside the new tunnels and stations, which will stretch into 2024.

Over the coming months, the seven-carriage trains will run back and forth deep under the CBD and Yarra River testing various equipment and systems to ensure they are working seamlessly and safely.

Fundamentals – such as lining the trains up with the platforms – will be tested first before the team gradually increases the complexity, from one train at low speed using minimal power through to multiple trains at greater speeds. ●

Southbanker

A life of spectacles and extraordinary experiences

It's hard to quantify the contribution James Avery has made to the events industry.

WORDS BY *Brendan Rees*

For more than four decades, the passionate Southbanker has been captivating audiences with his behind-the-scenes work on a wide range of projects as an entertainment and production specialist.

From festivals and family events to Olympic Torch Relay celebrations, to most recently setting up *The LUME Melbourne*, the world's largest digital art gallery, James is constantly pushing the boundaries to create innovative experiences.

"It was an amazing achievement," he said of *The LUME*, the venue at the Melbourne Convention and Exhibition Centre where the inaugural multi-sensory shows brought the works of world famous artists Van Gogh, and then Monet and friends, to life. Now *The LUME* is featuring First Nations' art in *Connections*.

James was contracted by Grande Experiences to complete the show's entire fit-out and build, which he conceded was an "incredible challenge to do it through lockdowns and COVID".

"When we got [*Van Gogh Live*] opened at the end of 2021, it was just stunning and nothing like Melbourne has seen before and the biggest of its genre in the world, which is a great achievement for everybody," he said.

But he quips he wouldn't be in the career today had he not deferred his photography and fine arts degree and turned up to work at the Moomba Festival as an 18-year-old in mid-'80s.

Expecting to help at what used to be a



community breakfast, James suddenly found himself "being handed the key to a three-tonne truck, and a handful of cash" to buy thousands of eggs wherever he could after organisers realised they only had 500 eggs instead of 5000.

James managed to pull off the feat by "driving around to every 7-Eleven store in Melbourne", which led him to being offered a full-time gig.

"I never went back to uni; I suddenly discovered this events industry was amazing. I have worked it in ever since."

James joined his brother to create Avery Events, which has seen the pair jet across the globe taking on mammoth shows, while back home they were behind the first Christmas parades in Melbourne and Sydney in the early '90s. ●

Another highlight was producing entertainment and community activities for the 2000 Olympics Torch Relay – proving it is "possible to live on Mars bars and coffee."

Asked what continued to drive him, he said, "Whether it's a public event outdoors or a theatre or an arena show ... it's when people laugh at the right moment, when they gasp at the right moment, when the smiles appear, and you know you got it right – that's the best reward."

Speaking of his passion for Southbank, where he has lived for the past 14 years, he said, "It's beyond convenient".

"I've lived and travelled in many, many countries around the world and they're stunning, but I wouldn't choose to live anywhere else. It's an incredibly diverse city." ●



Southbank
Residents Association

ANNUAL GENERAL MEETING & PRESENTATION on

The Greenline Project

For Southbank, the Promenade is our front porch,

The Yarra, our water feature ...

The North bank can be our front garden!

Time and Date: 6:30pm, Tuesday 29th August
Venue: Boyd Community Hub, 207 City Rd, Southbank

Our AGM is open to the public so come along and hear the City of Melbourne's Greenline Project Team talk about the plans for the North bank of the Yarra River.

Nina Taylor, MP, will also be in attendance.

Would you like to be more involved in your local community? Are you interested in volunteering?

We are always keen to hear from Southbank residents who want to know more about membership.

With our AGM just around the corner, we are also especially keen to hear from those interested in giving back to the community by joining our friendly group of volunteers on the SRA Committee.

Please contact Tony Penna at president@southbankresidents.org.au for more information.

Future events: Sunday, 3rd Sept, 12:30pm – 5:40pm – Table read of Film scripts.
Tues, 5th Sept, 6:30pm – 8:30pm. Thinking of becoming an OC member? Advice and responsibilities with Julie McLean, Strata Community Association.

Check our website for details.

www.southbankresidents.org.au

Printed and circulated with the assistance of a Melbourne City Council community grant.

Wish your inbox was more local?



Scan the QR to sign up to our Newsletter



SOUTHBANK NEWS

SOUTHBANK RESIDENTS' ASSOCIATION

Another big media month for Southbank



Climate change and rising sea levels are a significant issue to Southbank, which should be of pressing concern to the City of Melbourne.



You may have read *The Age* article where I was interviewed (and photographed) about the sea level rise warning and its predicted impacts on a significant number of Southbank dwellings (16,000), or my interview with Sammy J on ABC radio about the same topic.

During my 10 years as president of Southbank Residents' Association (SRA) I have been involved in many City of Melbourne forums where this has been highlighted, but based on the recent report commissioned by the Victorian Marine and Coastal Council we should expect to start seeing its impacts within the next 17 years.

Therefore, now is the time for the council to start some serious conversations with the state government to find solutions to mitigate this risk.

SRA will be keeping this conversation alive through our frequent engagements with the council. It's an important topic and the community needs to know how it will impact us.

Later this month SRA will be holding its 25th Annual General Meeting (AGM). What a milestone – 25 years!

We have invited the council's Greenline project team as guest speaker to share more about this exciting project and how it will impact

Southbank and enhance the north bank of the Yarra-Birrarung River.

The AGM is also an opportunity for any interested residents to join our committee and contribute to making Southbank a more liveable community. Much can be gained with joining a volunteer community organisation such as SRA.

Are you looking to enhance your CV with community involvement, or maybe just make a few new friends all while contributing to SRA's advocacy?

SRA has had many wins in the past which have contributed significantly to making Southbank a great place to live and work. But more still needs to be done, hence the reason for our call-out for interested persons to join.

We currently have a dynamic and friendly committee, which meets monthly. If you are curious and would like to know more, please don't hesitate to reach out. I can be reached at president@southbankresidents.org.au.

A tremendous amount of satisfaction is often created when volunteering your time in a community group.

Alternatively, if you would like to show your support by becoming a member, you can sign-up on our website southbankresidents.org.au ... it's only \$10! Without membership we don't have a voice.

Southbank Residents' Association AGM

Tuesday, August 29, 6.30pm @ Boyd Community Hub
See you there! ●



Tony Penna
PRESIDENT
PRESIDENT@
SOUTHBANKRESIDENTS.ORG.AU



HISTORY

The sounds of 180 Bank St

Buildings often show characteristics of change of purpose, architectural style, design and decorative features.



Such is the case with 180 Bank St, which was part of an industry noted for breaches of health laws, unclean premises, the sale of impure milk and the spread of diseases (such as typhoid and diphtheria) until the government introduced sweeping new legislation in 1906 including closing sub-standard dairies. But that's a story for another time!

The building became empty in the early 1960s and was in a derelict state when discovered by Melbourne music entrepreneur, Bill Armstrong. He had been operating his music business from four houses in Albert Rd but was expanding and needed more space, preferably in a single building. Armstrong's Music factory became legendary as he churned out a succession of hit records, including John Farnham's *Sadie* and then, through the '60s and '70s, artists such as the Easybeats, Daddy Cool and Skyhooks.

The building at 180 Bank St was a significant training ground for the next generation of audio engineers. It then became to home of DDP Studios where it became a film production studio, with post-production work on highly successful films such as *Mad Max*.

A dispute over unpaid rent led to the landlord changing the locks and shutting out the film

studio in 2006. The significance of Armstrong's studios upon the Australian music was profound – just think that many those hits from the '60s to the '80s were produced in South Melbourne!

The latest iteration is under way and sees number 180 being converted to high-quality office space, demonstrating the effectiveness of adaptive re-use of heritage buildings into office sites.

We should be grateful that the developer chose to retain the Art Deco style signage of Melbourne Butter Supply across its frontage. ●



Robin Grow
PRESIDENT - AUSTRALIAN
ART DECO AND MODERNISM
SOCIETY
ROBINGROW@OZEMAIL.
COM.AU

YARRA RIVER BUSINESS ASSOCIATION

Gone are the days of slow winters in Melbourne

What a dynamic winter period we're having in the Yarra River Precinct. During my 40 years in Melbourne, I cannot remember a winter period so rich in events and special occasions.

WORDS BY *Jeremy Vincent* - president

Our rather tired 30-year infrastructure along the riverfront is slowly but steadily getting replaced or rejuvenated. It's a case of having been "loved-to-death", when you think about the hundreds of millions of feet that have worn things down during the past three decades.

When we began in 1990, the destination was little known, but during the past 20 years it has been the thriving heart and soul of Melbourne's tourism experience and has been leading the city's post-COVID recovery.

In front of Hamer Hall and at the western end of Southgate the Promenade is looking ready for another 30 years. However, there might be some confusion regarding the still untouched major section of promenade in front of the Southgate food court. It's a long story!

Originally, the City of Melbourne proposed to upgrade the whole section of the promenade between Princes Bridge and Queensbridge Square. For funding reasons this was later modified to a smaller footprint between Princes Bridge and the Evan Walker Bridge.

However, when Southgate's owner ESR made its announcement about the major redevelopment of the eastern end of Southgate, the council decided to remove that section of promenade in front of the Southgate food court from its schedule of works. It will be revisited once ESR is ready to proceed with the redevelopment, and then it can be done in conjunction with that – a sensible approach. However, annoyingly it could be years before we see the full completion of the Southgate section of the promenade.

That section of the redevelopment will also eventually see the removal of the current trees to be replaced with an assortment of *Livistona Australis*, *Melaleucas* and *Jacarandas*, which have been chosen for their large canopy spread, tolerance to full sunlight, tolerance to complex soil conditions, longevity, biodiversity potential, high aesthetic value and appearance. A perfect choice, it would seem.

The council has a long-term succession plan to replace all the trees along the promenade, including those 21 trees in front of Southgate.

As for the upgrade of the rest of the promenade? Between Evan Walker Bridge and Queensbridge Square it's now anyone's guess. Originally, Crown was going to fund it as part of a "community contribution" required when building its third tower. However, that money disappeared when the project was cancelled.

So, funding for the rest of the promenade now needs to come completely from the council's coffers. Only \$500,000 has been allocated towards it in the council's capital works budget over the next two years to help determine this future stage. And so, the story continues ... ●

Sunday 27 August
9am **Worship with Bach Cantata**
Bisher habt ihr nichts gebeten
in meinem Namen (BWV87)
for 3 soloists, choir, strings, 3 oboes including
2 oboes da caccia and continuo
St Johns Bach Choir and Orchestra
directed by Graham Lieschke

Featuring the series of the nine
JS Bach cantatas with texts by
Christiana Mariana von Ziegler

Every Sunday
9am **Worship**
Check our website for updates

St Johns
Southgate

20 City Road Southbank
Telephone 9682 4995
www.stjohnssouthgate.com.au

NEIGHBOURHOOD POLICING

Getting back to basics

The recent community sentiment survey results are used to help identify and address what matters most to local communities through Victoria Police's back-to-basics Neighbourhood Policing initiative.

WORDS BY *Inspector Dale Huntington*
MELBOURNE EAST LOCAL AREA COMMANDER

Our goal is to always ensure safety for those who live, work, and visit Melbourne. From the survey results Southbank and Melbourne East police will continue to have effective dialogue, engagement and education between local CBD police and traders, residents, workers and students to address any issues or risks that the community require a policing response.

There is a dedicated 24/7 robust police presence in the city, supported by regular proactive operations to prevent crime, target offenders and improve overall safety in the city.

Uniform police from Southbank and Melbourne East are regularly supported by specialist units including transit police and PSOs, Public Order Response Team, Highway Patrol and Mounted Branch to patrol the city and ensure safety.

Operation MY City is continuing to provide a high-visible policing presence around late night precincts, working with licensed venues to provide a safe and vibrant late night environment within the Melbourne CBD.

Operation Petrichor-Winter, Operation Broom and Transit Operation Agora were conducted recently in Melbourne during July which saw 28 people arrested and nearly 100-plus infringements notices issued; outstanding warrants, drug possession, weapon offences and traffic offences.

Operation Protocol is an ongoing, joint operation run by police with The Salvation Army and City of Melbourne

to engage with people experiencing homelessness in Melbourne and ensure they have access to essential services.

The operation also targets anti-social behaviour around Elizabeth, Swanston and Bourke streets, Southbank and Flinders Street Station.

The priority for Victoria Police is to link people who are sleeping rough to the services available to them, however, if an offence is detected, police will deal with the matter at hand.

Survey results for Melbourne:

Number of survey respondents in 2023: 558
Top four safety concerns in 2023:

- Safety in public places (street violence, verbal abuse or harassment, anti-social behaviour).
- Drugs and alcohol (people affected by drugs or alcohol, public drinking or drunkenness, taking illegal drugs).
- Road safety (e-scooters, hoon driving, speeding)
- Safety of my property and possessions (theft, property damage, home burglary).

Perception of safety – people's feeling of safety in Melbourne (scale of one to five, one is very unsafe, three is neutral, five is very safe):

- 2023: 2.9
- 2022: 2.6

How safe has the Melbourne community felt in public places?

- Majority of the respondents felt safe at home both during the day and at night.
- Majority of respondents felt safe at public places during the day.
- Feelings of safety at night-time has improved when compared to the 2022 results. 59 per cent of respondents felt unsafe at public parks or spaces at night-time, and 51 per cent felt unsafe on the streets or footpath at night.

Are you comfortable talking to police and PSOs?

- 64 per cent said, "yes"
- 24 per cent said, "no"
- 11 per cent said they were unsure ●

Pet's Corner

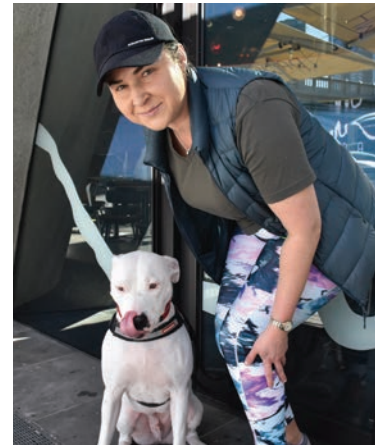


The jumpy, gentle giant

“

He may be big, but he's not one to fear.

”



WORDS BY *Phillip Emmanuel*

Consultant and local resident Magdalena adopted a Staffy/Whippet cross named Clay just over a year ago and has loved his company ever since.

“We fostered him for a couple months, then we ended up adopting him. My husband was initially hesitant about owning a dog in the city, but he just loved Clay and wanted to keep him too,” Magdalena said, as Clay curiously jumped around in the mid-morning sunshine.

“Working from home and not having to travel allows me to spend time with him.”

Magdalena takes Clay to many

different places in the Southbank area and surroundings throughout the week such as the Royal Botanic Gardens, and when the weather permits, he loves a trip to the beach too.

“He loves to get chased”, Magdalena said. “He even tries to eat from other dogs' bowls, knowing he will get chased after.”

Clay also enjoys chasing possums, thinking they'll be interested in playing with him, and is great around children too. ●

10 YEARS ON

Looking back at Southbank News - 10 Years On

AUGUST 2013 | ISSUE 22 |

SOUTHBANK NEWS

Design comp complete ... but isn't there something missing?

With much fanfare, the state government announced a winner of the Flinders Street Station design competition last month, but there was one rather important detail missing.



The winning design, by HASSELL, Herzog and De Meuron, looks spectacular with large white tubes enclosing the stations platforms, but the government is yet to allocate any funds towards the project.

\$1 million was spent on the competition, but the activation of the design may never actually go ahead. To further prove the thirst for change at the iconic station, the people's choice award had a huge number of voters.

Almost 19,000 people voted on their favourite design. A design from University of Melbourne won the people's choice award. The winning HASSELL, Herzog and De Meuron design came third in the people's choice award.

Victorian Premier Dennis Napthine said the winning proposal really opened up the station.

“The proposal offers tremendous benefits to Victorians, connecting the city to the north with the river and Southbank, while, at the same time opening up views and access to the historic administration building,” he said.

“The jury has praised the winning design for its respect to heritage of the administration building while creating new and memorable additions to the station, such as the vaulted train hall, the new gallery and riverside amphitheatre,” he added.

Minster for Major Projects, David Hodgett, echoed the Premier's thoughts and hinted at the prospect of making the design a reality, without specifically saying the project would eventually be funded.

“The jury praised the HASSELL, Herzog and De Meuron design for its 'evident sophistication and overall quality' going on to add that it 'could indeed provide a major city-changing outcome with benefits for all Victorians,’” Mr Hodgett said. ●

THE MOST EXCLUSIVE ESCORT AGENCY

Paramour

OF COLLINS STREET

CITY CENTRE
Melbourne's exclusive entertainment service.
Highly recommended for our interstate and overseas visitors

- Dinner Companions
- Social Escorts
- Sensual Ladies

VIP

Paramour's GRAND RE-OPENING

Be with the best girls in Melbourne give us a call to pre-organise for opening day due to overwhelming demand

CITY CENTRE GIRLS

9654 6011

Cbd - 5 MINUTES TO YOUR DOOR

たくさんの美しい女性
日本語を話します

rsvp@paramour.com.au

PUZZLES & TRIVIA

Quiz



- 1. What was Sri Lanka formally known as?
2. The works of Vincent van Gogh primarily belong to which art movement?
3. Why has the City of Melbourne begun drilling into the Yarra River?
4. In 1902, who became the first 'Lord Mayor' (pictured) of Melbourne?
5. In which year did the Korean War begin?
6. Normal People and Beautiful World, Where Are You? are novels by which Irish author?
7. Footballer Harry Kane plays for which English Premier League team?
8. What prestigious honour did Lord Mayor Sally Capp receive in June?
9. The National Gallery of Victoria is Australia's oldest gallery; in what year was it first founded?
10. Which of Shakespeare's plays is the longest?
11. Who has recently been appointed as the new City of Melbourne CEO?
12. Two Southbank businesses are in the running for the year's Lord Mayor's Small Business Awards; who are they?

QUIZ SOLUTIONS

1. Ceylon 2. Post-Impressionism 3. To discover if boardwalks and promenades are feasible for Greenliff 4. Sir Samuel Gilliot 5. 1950 6. Sally Rooney 7. Tottenham Hotspur 8. Order of Australia (AO) during the King's Birthday honours 9. 1861 10. Hamlet 11. Allison Leighon 12. Mary Martin Bookshop and experimental studio Other Matter

5x5

No. 027

Insert the missing letters to make 10 words - five reading across the grid and five reading down.

5x5 grid with some letters filled: A O E, O E, D O D, U G, E E D

SOLUTIONS

AFOR, DOZEN, DROID, LUNGE, EMBEL

PUZZLES AND PAGINATION @PAGEMASTERS PTY LTD PAGEMASTERS.COM August, 2023

Sudoku

No. 026

Fill in the blank cells using the numbers from 1 to 9. Each number can only appear once in each row, column and 3x3 block

EASY

9x9 Sudoku grid with some numbers filled

HARD

9x9 Sudoku grid with some numbers filled

SOLUTIONS

EASY

Sudoku solution grid for EASY

HARD

Sudoku solution grid for HARD

Wordfind

Theme: Space

The leftover letters will spell out a secret message.

10x10 wordfind grid with letters

- ASTEROID, ASTRONAUT, COSMOS, GAS, GRAVITY, JUPITER, MARS, MERCURY, METEOR, NEPTUNE

- ORBIT, PLANET, ROCKET, SATELLITE, SATURN, SHUTTLE, SPACESHIPS, STAR, SUN

Secret message: Universe

Crossword

No. 026

ACROSS

- 1 Counter-intelligence (9), 6 Employer (colloq) (4), 10 Separates with a sieve (5), 11 Decision-making group (9), 12 Denial (8), 13 Duds (coll) (6), 15 Pitfall (4), 16 Huge statues (10), 19 Artists who embrace post-classical styles (10), 21 Circle of light (4), 22 Variety of nut (6), 24 Plane hubs (8), 27 Bandit (9), 28 Fraudulent schemes (5), 29 Appendage (4), 30 Sponsor (9)

Crossword grid with numbers

10 Refuge (7)

23 Japanese dish (5)

14 Lucky (10)

25 Sat (5)

DOWN

- 2 Protect (9), 3 Implant (5), 4 Cemetery (10), 5 Courageous (4), 7 Surpass (5), 8 Appears to be (5), 9 Apple drinks (6), 17 Methods of travel between floors (9), 18 Husbands or wives (7), 20 Staggered (6), 22 Military student (5), 26 Italian meat-based sauce (4)

SOLUTION

Sudoku solution grid

Codeword

No. 026

Codeword grid with numbers

SOLUTIONS

Codeword solution grid

9-Letter

No. 026

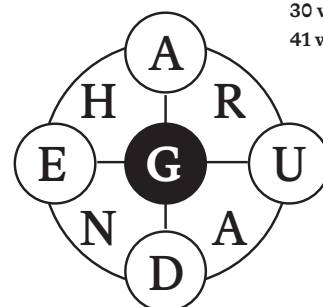
Today's Focus:

20 words: Good

30 words: Very good

41 words: Excellent

Using the nine letters in the grid, how many words of four letters or more can you list? The centre letter must be included and each letter may only be used once.



SOLUTIONS

- Reference: Collins Concise English Dictionary

What's on: August 2023

Community Calendar



UNTIL DECEMBER 2023, 10AM - 4PM
ARTS CENTRE MELBOURNE SUNDAY MARKET

Featuring local designers and artisans, discover handcrafted treasures made by local artisans at Arts Centre Melbourne's Sunday Market.



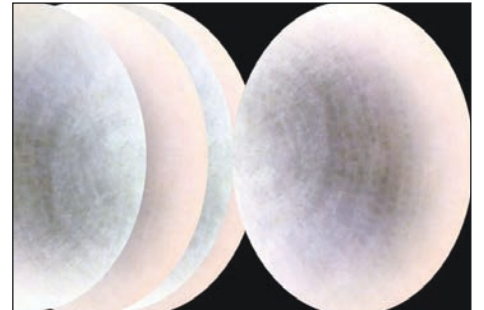
THURSDAYS, 10.30AM - 11AM
STOMPERS

Come along for an energetic 30 minutes of stories, songs, rhymes, music and most of all, fun. Ages 18 months to 3 years; no bookings necessary. 03 9658 8300 Southbank Library at Boyd

FREE - UNTIL SEPTEMBER 3
BETWEEN WAVES EXHIBITION
The exhibition navigates the intersections and collisions between art, culture, materiality and technologies. Highlighting the significance of First Nations contemporary art practice of the Southeast within a national context.
Australian Centre for Contemporary Art



FREE - UNTIL OCTOBER 29
NIGHTSHIFTS
Contemplate the importance of solitude through contemporary art.
Nightshifts is a contemplative new group exhibition that considers the importance of solitude through contemporary arts practice.
Buxton Contemporary



EVERY FRIDAY UNTIL OCTOBER 6, 6PM TO 10PM
NGV FRIDAY NIGHTS
NGV Friday Nights brings a kaleidoscope of colour and sounds to Melbourne's winter nights in celebration of Pierre Bonnard: Designed by India Mahdavi.
National Gallery of Victoria



SATURDAYS, 10AM - 12PM
SOUTHBANK SUSTAINABILITY GROUP
Join a group of green sustainability enthusiasts who meet fortnightly each month.
Specific dates can be found on facebook.com/SouthbankSustainability Group

Business Directory


Church



St Johns
Southgate

20 City Road Southbank
Telephone 9682 4995
www.stjohnssouthgate.com.au

Physiotherapy



Elite Sports Physiotherapy

Sports & Spinal Physiotherapy
Remedial Massage
Clinical Pilates
Post-Surgical Rehabilitation
Free Injury Assessments
WorkCover/ TAC Claims

Mezzanine Level, 13-15/1 Freshwater Place, Southbank
PHONE: 8640 0328 WEB: www.elitesportsphysio.com.au

Fitness



JUSTINTIME
WORKPLACE HEALTH | PERSONAL TRAINING

All trainers are University Degree qualified and we come to you!

www.justintimeworkplacehealth.com
www.justintimept.com

Politician



We're here to help. Please get in touch if you need assistance.

Your Federal MP for Southbank.

Josh Burns MP
FEDERAL MEMBER FOR MACNAMARA

joshburns.com.au
josh.burns.mp@aph.gov.au (03) 9534 8126
219 Barkly St, St Kilda VIC 3182

Functions



St Johns
Southgate

Facilities hire Beautiful venue for weddings and memorial services
Concert venue with excellent acoustic and comfortable seating Spacious function room Meeting rooms Kitchen

20 City Road Southbank
Telephone 9682 4995
www.stjohnssouthgate.com.au

Real Estate



RayWhite

Ray White Southbank | Port Phillip
111 Clarendon Street, Southbank 3006
P: (03) 8102 0200
www.raywhitesouthbank.com.au



Open 24/7
genuine kinky escorts
5 mins to your door
CBD location

Top Class of Collins Street
(03) 9654 6351
contact@topclassofcollinsstreet.com.au

SOUTHBANK NEWS

Talk to Southbank News owner Sean Car
t 0460 896 115 e sean@hyperlocalnews.com.au
about how to customise your campaign to our audience every month.

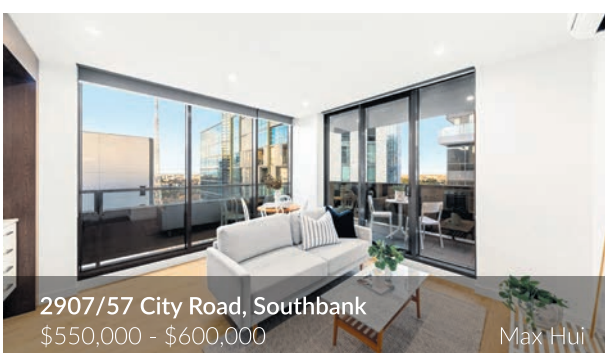
Here today, gone tomorrow.

RayWhite

Scan the QR code

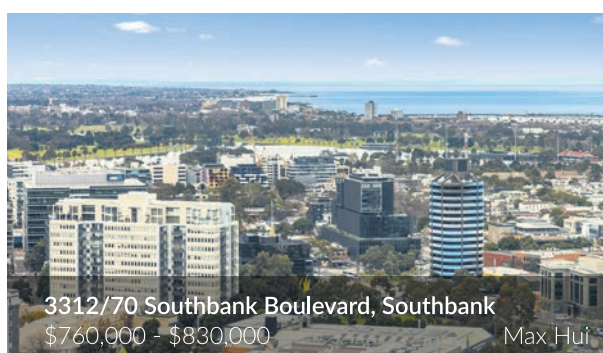


Call us on 8102 0200 or email us via southbank.vic@raywhite.com to book an appraisal for sale or rental. Visit raywhitesouthbank.com.au for more details.



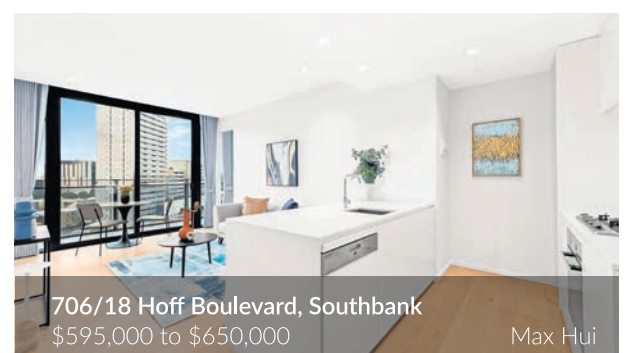
2907/57 City Road, Southbank
\$550,000 - \$600,000

Max Hui



3312/70 Southbank Boulevard, Southbank
\$760,000 - \$830,000

Max Hui



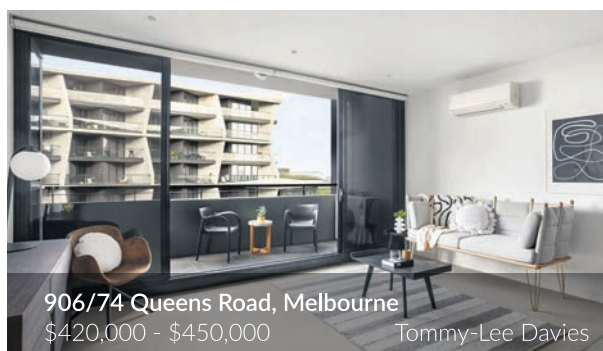
706/18 Hoff Boulevard, Southbank
\$595,000 to \$650,000

Max Hui



1106/89 Gladstone Street, South Melbourne
\$525,000 - \$575,000

Taylor Sims



906/74 Queens Road, Melbourne
\$420,000 - \$450,000

Tommy-Lee Davies



1410/478A St Kilda Road, Melbourne
\$800,000 - \$850,000

Tommy-Lee Davies



T608/348 St Kilda Road, Melbourne
\$480,000 - \$520,000

Austen Kosasih



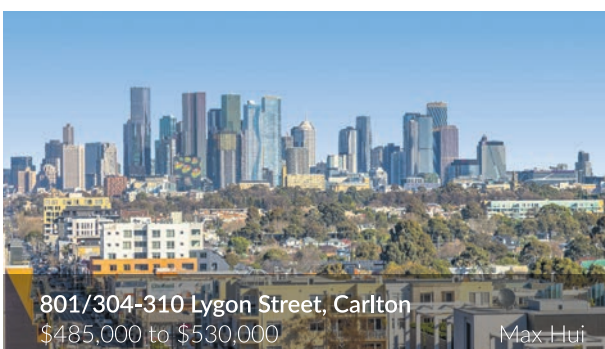
1013/118 Franklin Street, Melbourne
\$1,250,000 - \$1,350,000

Austen Kosasih



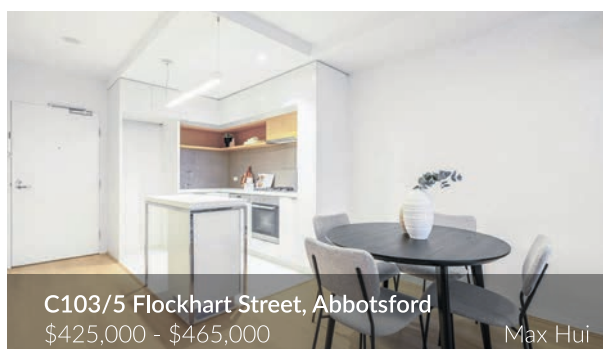
208/8 Garfield Street, Richmond
\$330,000 - \$350,000

Austen Kosasih



801/304-310 Lygon Street, Carlton
\$485,000 to \$530,000

Max Hui



C103/5 Flockhart Street, Abbotsford
\$425,000 - \$465,000

Max Hui



B410/8 Grosvenor Street, Abbotsford
\$685,000 - \$750,000

Max Hui



Sold

1607/45 Clarke Street, Southbank
\$460,000

Max Hui



Sold

G06/1217 Centre Road, Oakleigh South
\$435,000

Max Hui



Michael Pastrikos: 0404 282 864

Max Hui: 0430 238 021

Tommy-Lee Davies: 0416 823 173

Austen Kosasih: 0422 396 900

Taylor Sims: 0403 485 210

raywhitesouthbank.com.au