



Evening Walk Group steps out for safety and connection

The new Southbank Evening Walking Group, supported by Southbank Neighbourhood Watch, hosted its biggest event yet on October 20, when around 30 residents joined Lord Mayor Nick Reece and members from Southbank Police Station for a community walk through the precinct. More on page 8.

Photo: Hanna Komissarova.

Council backs 52-storey Southbank tower after Team Reece exits over donation conflict

“The City of Melbourne has endorsed a 52-storey apartment tower in the Crown Casino precinct – minutes after Lord Mayor Nick Reece and three “Team Reece” councillors left the chamber citing a conflict of interest linked to a 2024 campaign donation.

WORDS BY
SEAN CAR

”



At the October 16 Future Melbourne Committee meeting, councillors Reece, Roshena Campbell, Kevin Louey and Mark Scott recused themselves, citing a donation from a company related to the applicant. Southbank News understands a \$2000 contribution

to Team Reece from LAS Investments Corporation Pty Ltd prompted the declarations; the proponent before council was LAS Property Management Pty Ltd. The Lord Mayor’s 2024 election campaign vowed not to accept donations from property developers in the City of Melbourne.

With the council’s deputy planning lead Cr Phil Le Liu in the chair, the remaining seven councillors considered a Ministerial referral covering 93–103 Clarendon St, 25–29 Clarke St and 27–59 Whiteman St. This project, as well as another 25-storey tower at 38 Clarke St also by LAS Group, has since received planning approval from Minister for Planning Sonya Kilkenny, the Department of Transport and Planning confirmed.

Designed by Fender Katsalidis for LAS, the \$160 million Clarendon St project will deliver 510 dwellings atop a brick-and-glass podium, with red-finned tower façades and an emergency egress bridge linking to Crown’s multi-storey car park.

Council officers recommended “no objection” subject to conditions, citing compliance with the planning scheme, strong sustainability measures, and a modest affordable-housing contribution.

The plans included 358 one-bedroom and 152 two-bedroom apartments, 306 bicycle spaces and just 32 car parks – consistent with central-city policy to cap

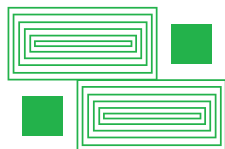
Continued on page 3.

CRIME, PAGE 07

Crossbenchers criticise police for weak response to Camp Sovereignty neo-Nazi attack

PLANNING, PAGE 11

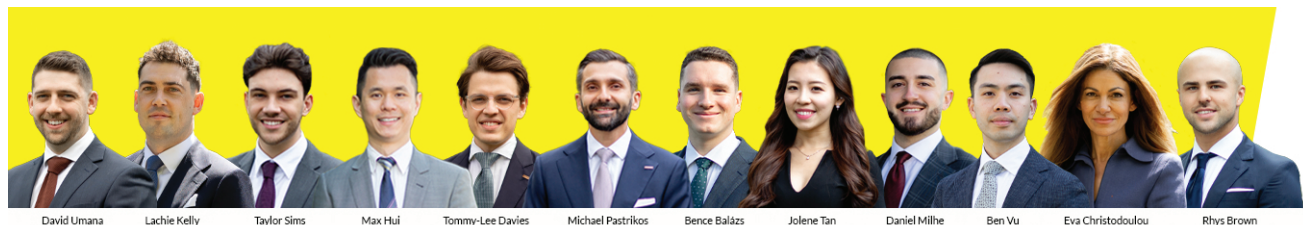
Twenty-storey Southbank tower planned for Sturt St



ARTS & CULTURE, PAGE 13

A celebration of art, resilience and recovery opens at Southgate

A powerful new exhibition exploring creativity, recovery and the human spirit has opened at Southgate Gallery, shining a light on how art can help rebuild lives after trauma.



Buy, Sell, Lease
Speak to our team today

8102 0200 | raywhitesouthbank.com

RayWhite

HYPERLOCAL
NEWS

CONTACT

Suite 208, 198 Harbour Esplanade
Docklands 3008
southbanklocalnews.com.au
Tel: 8689 7980

EDITOR

Sean Car

PUBLISHER

Hyperlocal News Pty Ltd
ABN: 57 623 558 725

ADVERTISING

Hyper-local print works for
advertisers in our digital world
because local people are
interested in local news.

To sell to the Southbank community,
contact Sean Car on 0460 896 115 or
sean@hyperlocalnews.com.au

Reader contributions are welcome.
Send letters, articles and images to:
admin@hyperlocalnews.com.au

The deadline for the December /
January edition is December 5

Opinions expressed by
contributors are not necessarily
shared by the publisher.

hyperlocalnews.com.au
admin@hyperlocalnews.com.au

Follow us on social media
by searching @southbanknews

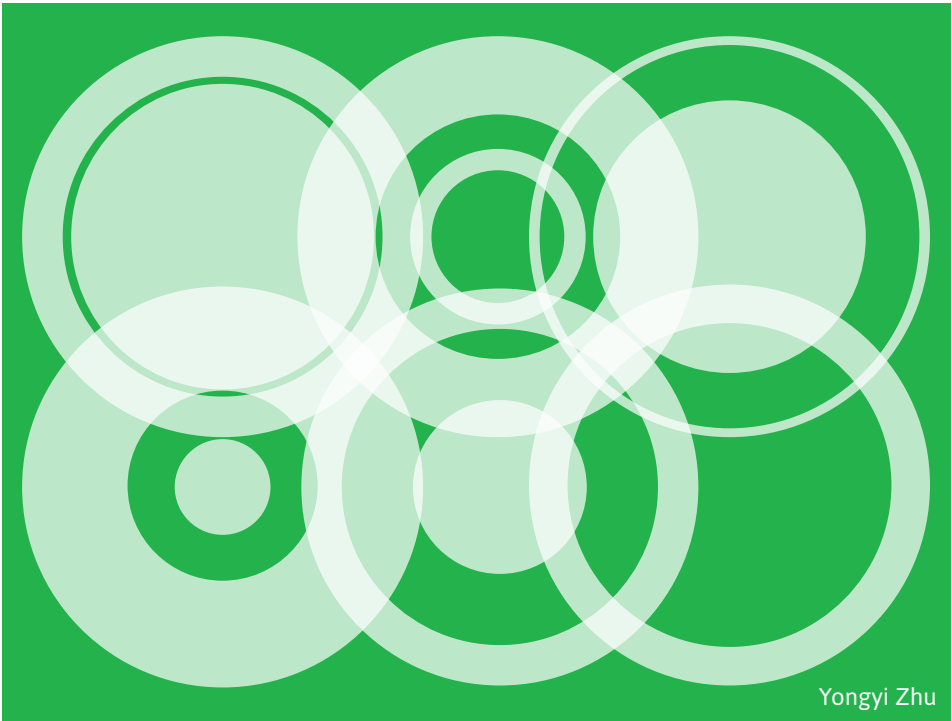


Southbank News × VCA Graphic Interventions

As you're turning the pages of this month's edition of *Southbank News*, you'll notice a series of green graphics throughout – a creative initiative conducted in partnership with The University of Melbourne's Victorian College of the Arts (VCA).

This project invited students from the Master of Design and Production (Graphic Design) program at VCA in Southbank to create a series of small-scale graphic interventions for this November 2025 edition of *Southbank News*. Each contribution emerges from field research undertaken in and around the Southbank neighbourhood, including the VCA campus, Melbourne Arts Precinct, public spaces, and the rhythms of its cultural and civic life.

The project began with acts of close observation such as walking, listening, mapping, drawing, writing and collecting material fragments. From these traces, students identified small moments of attention such as gestures, textures and environmental patterns, and translated them into graphic form. The results are subtle but deliberate, made up of marks, patterns, typographic rhythms and linework that quietly thread throughout this issue of the paper, all unified in a high-contrast green. Over several weeks, students spent time in Southbank, returning to the same streets, pathways and public spaces to observe their changing character. Through this repeated engagement, they came to know the neighbourhood anew, not only through what they saw but through its rhythms and atmospheres. Their interventions can be read as a kind of graphic visual essay, a collection of impressions and abstractions shaped by attention, duration and place.



Yongyi Zhu

Each student developed an individual visual language shaped by their encounters with Southbank. **Yu Li** explored contrast, working between geometric and organic forms, between randomness and order, between the remarkable and the modest. **Xinru Yang** treated the newspaper page as a city surface, a wall or a ground plane, drawing connections between print and site. **Srishti Oberoi** traced recurring patterns in sound and atmosphere, translating sensory experience into visual rhythm. **Hongyu Chen** distilled geometric motifs from the built environment, designed to function as both individual units and repeating sequences. **Jaye Wang** reflected on the transition between old and new in Southbank, inviting readers to think about the area's shifting identities. **Hannah Dong** developed a suite

of symbols drawn from the local architecture that tessellate to create pattern and structure. **Yongyi Zhu** translated the ambient sounds of Southbank into a graphic language. **Lane Wang's** design imitates painted street markings, sidewalk lines and car park stripes, while acknowledging the bee populations that also inhabit the precinct.

Together, these contributions form a quiet and layered reflection on Southbank. They remind us that graphic design emerges from attentive looking, and that the smallest marks can shape how a place is read.

This project was conceived and produced by Ela Egidy and delivered by tutors Emile Zile and Tristan Main as part of the Master of Design & Production (Graphic Design) program at the VCA, Faculty of Fine Arts and Music, The University of Melbourne. ●

EUREKA 89

Eureka 89 offers an exquisite dining experience with views of Melbourne that elevate every occasion. Located on the 89th floor of the iconic Eureka Tower, our dining options present a unique blend of contemporary cuisine crafted from locally sourced ingredients. At nearly 300 metres in the sky, it truly is...

Book now
and receive
**10% off
Dining***
Use promo code
LOCAL25

AN EXPERIENCE
ABOVE ALL ELSE



ALTITUDE DINING EXPERIENCE

Delight in a sophisticated 3-course choice menu experience that blends Melbourne's sights, sounds, and flavours, featuring Melbourne Skydeck experiences.



CHEF'S TASTING

Indulge in a premium dining experience with our 6-course or Signature 8-course Tasting Menu, thoughtfully curated by our award-winning executive chef, Renee Martillano.

BOOK NOW EUREKA89.COM.AU

*T&Cs apply. Promo code can only be redeemed once per person. Only available for use at checkout online and not available for on-site redemption. This offer is valid for bookings until 31 December 2025 for dining until 31 January 2026. This offer is not applicable on specialty events.

Council backs 52-storey Southbank tower after Team Reece exits over donation conflict

Xinru Yang



Continued from page 1.

parking and prioritise walking, cycling and public transport. Waste and loading are to occur off Haig Lane. Officers also flagged extensive work with Melbourne Water to manage flood risk via the elevated egress link.

What dominated debate, however, was how the developer calculated the amount of public benefit it needed to provide in exchange for building height – a point that led to an intense exchange between councillors and the applicant's planning team.

Under the City's planning rules, developers can build up to a certain height before they are required to contribute extra public benefit, such as affordable housing or open space. This is measured using what's called a floor area ratio (FAR) – the amount of total floor space divided by the size of the site.

In this case, the developer included part of the neighbouring Crown Casino car park in its site area after purchasing the air rights above it. Crown and its owner Blackstone offloaded several non-core assets in 2023, including the Clarendon St and City Rd/Clarke St sites, to Melbourne-based LAS Group in a deal that also granted the developer ownership of the car park's airspace.

That transaction meant Crown could no longer build above the car park in future, but it also allowed LAS to enlarge its project footprint and, in turn, propose a taller tower while remaining within the FAR limit.

Cr Andrew Rowse questioned the arrangement, describing it as a "clever workaround" that was legal under the planning scheme but unfair in spirit. He told *Southbank News* that by expanding the "site" to include the car park next door, the developer was essentially "borrowing the neighbour's backyard" to build higher without paying a greater community return.

As a result, the public benefit – calculated



at about \$980,000 – will amount to only one or two affordable apartments gifted to a housing provider, despite the tower containing 510 dwellings.

Cr Rowse said he was "disappointed" with the outcome but felt compelled to support the application since it complied with the rules.

"Unfortunately, as far as I can see, it's completely compliant, and therefore I have

no choice but to support it," he said during the meeting. "But I hope in future those schedules can change so we can increase the public benefit."

Cr Le Liu said while he shared concerns about the scale of uplift, the project would help revitalise a long-underused stretch of Clarendon St. "At the end of the day, I would rather have something than nothing," he said. "This is a

\$160 million project that means more housing, more jobs and uplift for that entire area. It fits within the rules and ultimately, it's a great outcome for Southbank."

Cr Davydd Griffiths echoed that view, thanking officers for their "fine-toothed comb" assessment of the proposal.

"Wherever there's an opportunity to maximise benefit for the people of Melbourne, we do so," he said, adding that the project "delivers housing in a well-served location" at a time when the city needed it most.

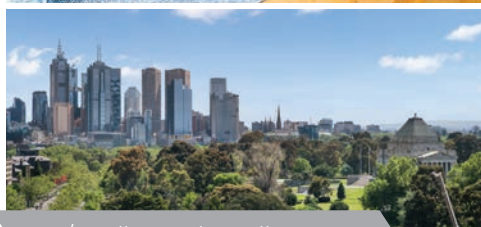
Urban-design outcomes were broadly praised by councillors. The brick podium promises a more tactile, human-scaled edge to a long-dormant stretch of Clarendon St, while the strongly articulated tower aims to add "warmth and energy" to a precinct dominated by parking structures and blank interfaces.

The very low car-parking ratio drew questions from councillors Owen Guest and Gladys Liu about spillover into surrounding streets; officers pointed to long-standing maximum-parking controls in Southbank and the CBD designed to limit traffic generation. "I'm always supportive of more housing, especially affordable housing," Cr Liu said, adding she was "pleased to see the inclusion of FOGO and waste management facilities" but "concerned only 32 parking spaces may create pressure for on-street parking".

While councillors ultimately voted unanimously to support the officer recommendation and refer the application to the Minister for Planning with no objection, the discussion exposed broader unease about the use of air-rights deals in Southbank.

As Cr Rowse noted, the arrangement was "a first" in how Crown's car-park airspace was used to effectively expand the development footprint. "It's a legal move," he said, "but it raises real questions about whether public benefits are keeping up with private gains." ●

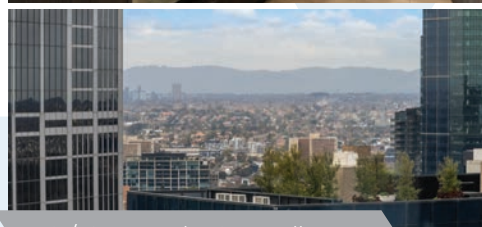
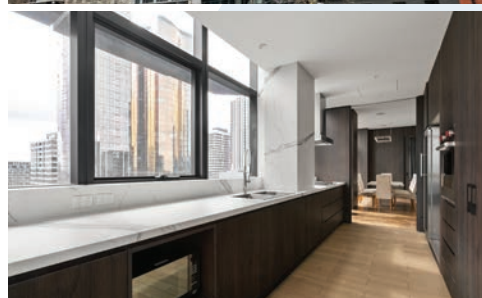
FOR SALE



1501/35 Albert Rd – Melbourne

3 2 2

FOR SALE



4101/327 La Trobe St – Melbourne

2 2 2

**INNER
REAL ESTATE**

Are you thinking
of selling this spring?

Call us now
03 9804 5551

ire.com.au

Anthony Cimino
0400 500 903 | anthony@ire.com.au

SALES | RENTALS | OWNERS CORPORATION



SALE

107/83 Queensbridge Street, Southbank

- Rare and one-of-a-kind floor plan, unique in the complex
- Seamless indoor-outdoor flow
- Floor-to-ceiling windows framing views to the terrace
- Secure car space on title (not stacker parking)

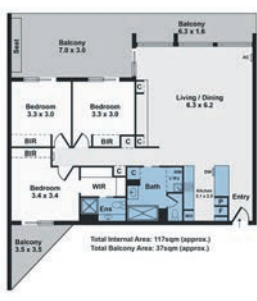
■ We bring the *whole* team
Ray White Southbank | Melbourne City 03 8102 0200

Michael Pastrikos
0404 282 864
michael.pastrikos@raywhite.com

Jayden Ryan
0437 810 755
sales.mp@raywhite.com

raywhitesouthbank.com.au

3 2 1



AUCTION

1/18 Wells Street, Southbank

- Secure low-rise complex in a peaceful Southbank pocket
- Generous living and dining zone with expansive windows
- Renovated with stylish laminate flooring and fresh paint throughout
- Huge entertainer's balcony

■ We bring the *whole* team
Ray White Southbank | Melbourne City 03 8102 0200

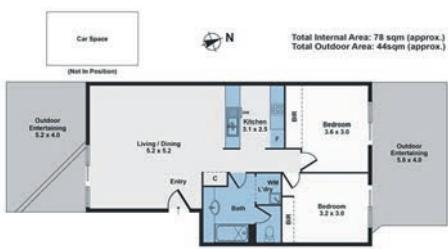
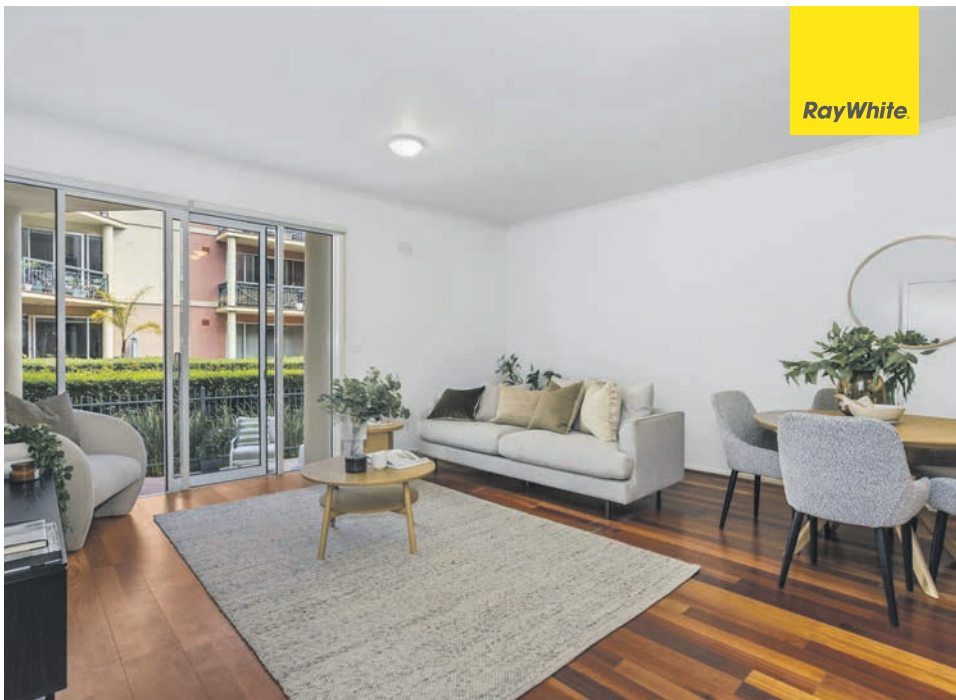
Auction
Sat, 15th Nov at 10:30 AM
On Site Auction

Michael Pastrikos
0404 282 864
michael.pastrikos@raywhite.com

Jayden Ryan
0437 810 755
sales.mp@raywhite.com

raywhitesouthbank.com.au

3 2 1



AUCTION

25/88 Wells Street, Southbank

- Quiet garden complex setting at The Keep
- Expansive open plan living and dining areas
- Two separate outdoor entertaining/courtyard areas
- Secure car space on title

■ We bring the *whole* team
Ray White Southbank | Melbourne City 03 8102 0200

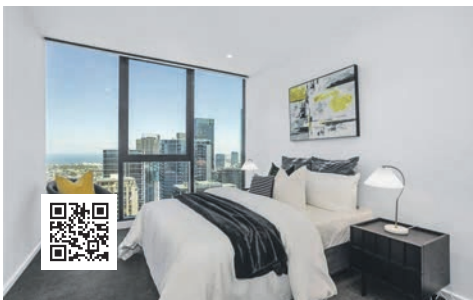
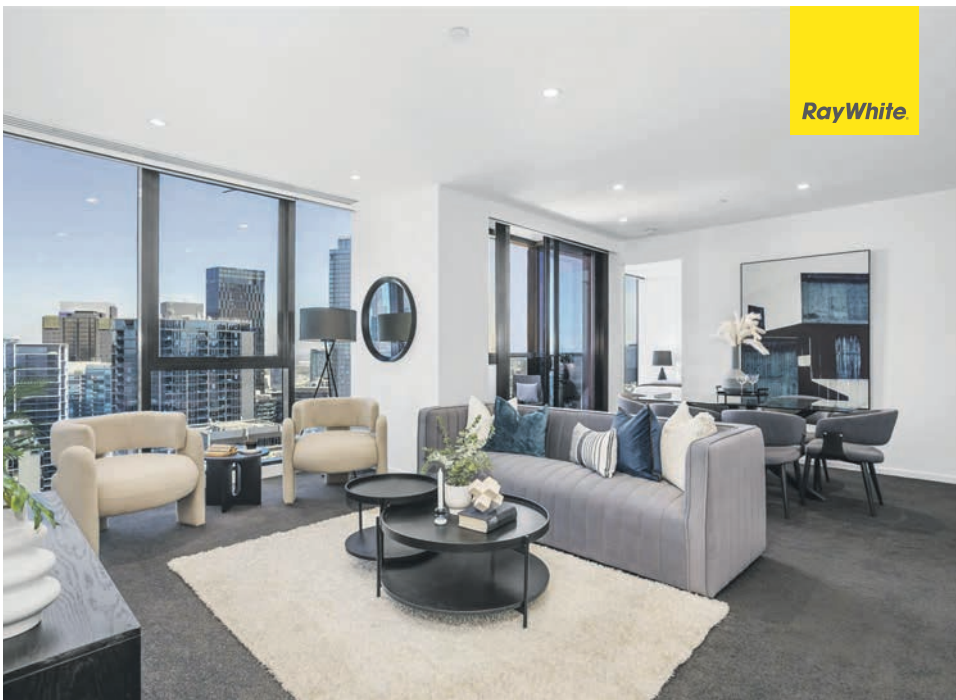
Auction
Sat, 15th Nov at 12:30 PM
On Site Auction

Michael Pastrikos
0404 282 864
michael.pastrikos@raywhite.com

Jayden Ryan
0437 810 755
sales.mp@raywhite.com

raywhitesouthbank.com.au

2 1 1



SALE

4402/60 Kavanagh Street, Southbank

- Positioned high on the 44th floor of the award-winning Southbank Place tower
- Uninterrupted bay-to-city panorama with stunning sunset views
- Resort-style resident amenities: indoor pool, gym, & yoga studio

■ We bring the *whole* team
Ray White Southbank | Melbourne City 03 8102 0200

Michael Pastrikos
0404 282 864
michael.pastrikos@raywhite.com

Jayden Ryan
0437 810 755
sales.mp@raywhite.com

raywhitesouthbank.com.au

2 2 1

VCAT ruling limits OCs' ability to manage their buildings

“

A recent tribunal ruling has sparked widespread concern among apartment owners, after it effectively stripped owners' corporations (OCs) of their ability to take disputes to the Victorian Civil and Administrative Tribunal (VCAT) without first securing a supermajority.

”



Jaye Wang

WORDS BY
JON FLEETWOOD



The legal precedent, set by VCAT deputy president Teresa Bisucci, means OCs must now achieve a 75 per cent vote from all lot owners for non-monetary actions, including compelling a neighbour to stop nuisance activities or behaviour, or demanding documents.

Owners' Corporation Network (OCN) director and Docklands resident Dr Janette Corcoran said the ruling had "significantly limited" the ability of OCs to manage their buildings and maintain liveability.

"It creates uncertainty for both residents

and committees and undermines confidence in the management of shared living environments," Dr Corcoran said. "This highlights the urgent need for clearer and more consistent oversight of strata governance."

OCN is advocating for a Strata Commissioner for Victoria – a role that already exists in New South Wales and Queensland – to provide independent oversight and prevent such unintended consequences.

Dr Corcoran said the decision did not favour residents, arguing it weakened the ability of communities to uphold agreed standards.

"It's hard to see how residents benefit when rules that everyone accepted before moving in can no longer be enforced," she said. "This arguably favours those who wish to breach rules, often at the expense of their neighbours' amenity."

"Most residents reasonably expect quiet

enjoyment of their homes – this decision weakens that shared expectation."

Strata industry campaigner Rocco Sorace said the ruling had already caused serious confusion and distress for apartment communities trying to manage short-term letting.

"Our building went through the lengthy and expensive process of achieving a 75 per cent vote to ban Airbnb and similar short-term rentals," Mr Sorace said. "Now we're being told we need another 75 per cent vote just to enforce the same rule through VCAT. It's unjust and unworkable."

Mr Sorace said his building had spent more than \$100,000 in legal fees and four years of effort to reach the original agreement.

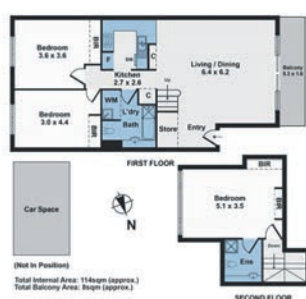
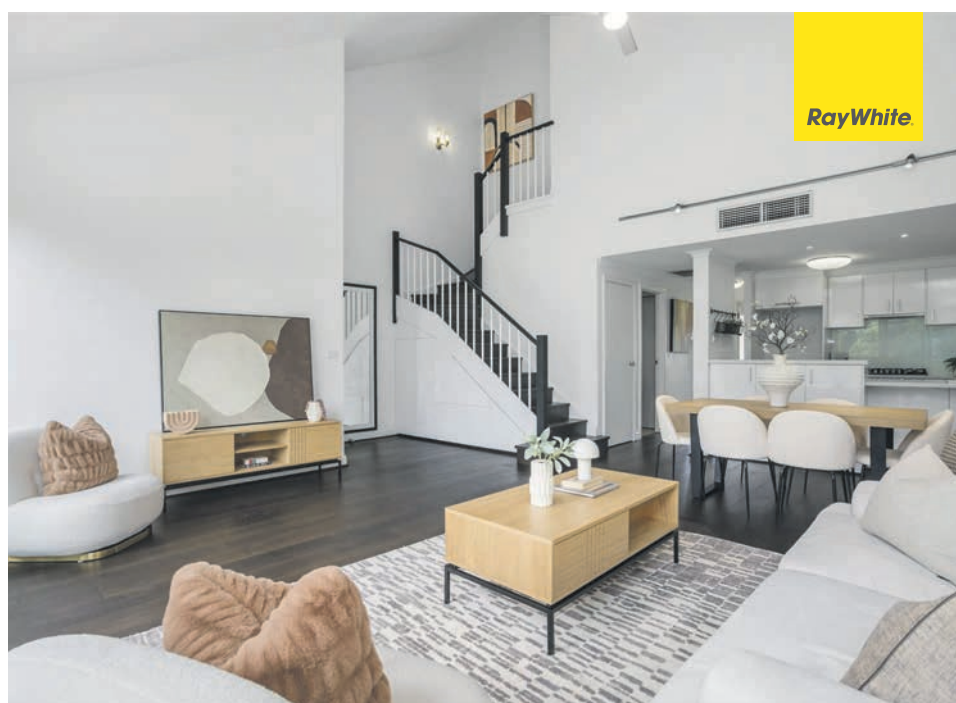
"Residents deserve the right to protect their homes, privacy and safety without facing endless procedural hurdles," he said. "We're asking the government to clarify the law so that one special resolution is enough to both implement and enforce a ban."

A Victorian Government spokesperson said reforms introduced in 2021 were designed to modernise strata governance, and that an independent review was already under way.

"We made significant reforms in 2021 to better reflect the needs of Victorians living in apartments and other properties administered by owners' corporations," the spokesperson said.

"We've commissioned an independent expert panel to review the Owners Corporation Act to ensure the legislation is fair, efficient and in the interests of lot owners and residents."

The panel, chaired by former minister Marsha Thomson alongside Karen Chester and David McKenzie, is consulting with strata communities across Victoria and will deliver its recommendations to the Minister for Consumer Affairs by December 2025. ●



3 2 1

Making a Move in 2026?

Planning Starts Now

RayWhite



As Southbank's most trusted and experienced agent, Michael delivers premium prices through proven strategy, buyer reach, and tailored marketing. Make 2026 your best move and contact Michael today.



Michael Pastrikos
0404 282 864
michael.pastrikos@raywhite.com
Ray White Southbank
raywhitesouthbank.vic

AUCTION

9/79 Dodds Street, Southbank

- Oversized sun drenched living and dining zone
- Seamless indoor-outdoor flow to private balcony with greenery & city glimpses
- Designer kitchen with premium appliances

■ We bring the whole team

Ray White Southbank | Melbourne City 03 8102 0200

Auction
Sat, 6th Dec at 12:00pm
On Site Auction

Michael Pastrikos
0404 282 864
michael.pastrikos@raywhite.com

Jayden Ryan
0437 810 755
sales.mp@raywhite.com

raywhitesouthbank.com.au

Philip Le Liu: A steady hand at Town Hall

“Now in his third term on the City of Melbourne council, Cr Philip Le Liu has become one of the council’s more experienced and pragmatic voices. Known for his financial discipline, Cr Le Liu’s journey to Town Hall has been anything but conventional.”

WORDS BY
JON FLEETWOOD



Before entering local government, Cr Le Liu worked as a management consultant but found the corporate world “not fulfilling enough”. Seeking something more meaningful, he spent time in China launching an education technology start-up and working with the Australia-China Youth Association, a not-for-profit organisation that supported thousands of Australian international students studying in China. On his return to Melbourne, Cr Le Liu made an unlikely move into politics, standing as the Liberal candidate for the seat of Melbourne in the 2016 federal election, which was a contest few were willing to take on against Adam Bandt.


However, Cr Le Liu punched above his weight and defied expectations, becoming the first Liberal candidate to outpoll Labor on primary votes in the electorate’s history. His performance caught the attention of the late long-serving councillor Ken Ong, who invited him to join his council ticket. “Without Ken Ong and his support, I wouldn’t be here,” Cr Le Liu said. “He gave me my start, and I’m very grateful for that.” Since being elected, Cr Le Liu has built a reputation for his focus on responsible financial management. During his previous term, as head of the finance portfolio under former Lord Mayor Sally Capp, he oversaw four budgets and pushed the council to return to surplus. “It’s not sexy,” he said. “But getting the City of Melbourne back in the black was crucial. We couldn’t just keep spending like before – we had to fix our financial position.” However, there is still a long way to go, according to Cr Le Liu, who said the biggest challenge the council now faced was completing the initiatives it had promised, drawing attention to the redevelopment of Queen Victoria Market and the Greenline project. “We have this habit of launching new initiatives before completing the old ones,” he said. “It’s time to consolidate, not just create.” This term, Cr Le Liu has taken on a new challenge as head of the creative and arts portfolio, which he volunteered to do following a proposed restructure that would have merged arts with the tourism and events portfolio. “Arts deserves its own champion,” he said. “Melbourne is a city defined by its arts and culture. We can’t treat it as an afterthought.” While he doesn’t consider himself an artist, Cr Le Liu’s commitment stems from a belief that strong cultural policy is essential



COUNCILLOR PROFILE

to Melbourne’s identity. “I gave up other portfolio opportunities to take it on,” he said. “Someone needed to stand up for it.” Cr Le Liu’s passion for standing up for what he believes in isn’t new. Earlier in his council career, he advocated for international students, believing they had been overlooked. “When I started, there was no real budget

or recognition for international students,” he said. “After four years, we’d created programs, internships and proper engagement. We changed the culture within council to include them in everything we do.” From EY to Town Hall, Cr Le Liu has donned many hats, but at the heart of all his ventures has been a desire to make long-lasting change and to always be a voice of reason. ●



TIMBER | CARPET | HYBRID | LAMINATE

AMS Flooring provides premium flooring solutions designed to elevate any space – whether it’s a home, rental property, commercial setting, or high-rise. With a perfect blend of quality, durability, and style, we bring lasting value to every floor we cover.

▲ Free Itemised Quotes


▲ 5 Star Customer Reviews

▲ Mobile Showroom


▲ Lifetime Installation Warranty




▲ Family-Owned and Locally Operated

info@amsflooring.com.au 03 9108 3663 amsflooring.com.au



909/63 WHITEMAN STREET
SOUTHBANK




3  2  1 

A GRAND VIEW LIFESTYLE AWAITS!
North-facing 3-bedroom home in Vue Grande, opposite Crown and 600m to CBD. Features stone-topped kitchen, ensuite, balcony with city views, secure car park, plus access to pool, gym, sky garden & concierge.

AUCTION
Saturday 22nd
November at 11.00AM

EUGENE LOUEY
0401 299 997
ALICE GEDDES
0421 981 981
DOCKLANDS
03 9936 9999



Please support our advertisers because without them we would have no Southbank News



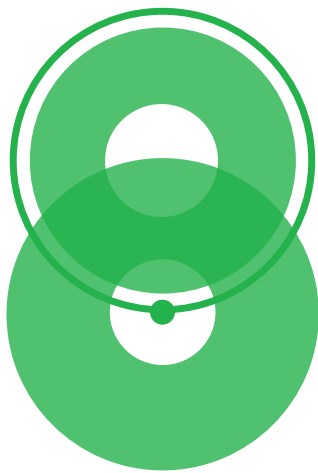
Crossbenchers criticise police for weak response to Camp Sovereignty neo-Nazi attack



“

The Australian Federal Police (AFP) and Victoria Police have been criticised for holding back on investigating and prosecuting the Camp Sovereignty attack as a hate crime, despite mounting pressure from the crossbench.

”



Yongyi Zhu

WORDS BY
JON FLEETWOOD



On August 31, following the Anti-Immigration march in Melbourne's CBD, members of the National Socialist Network (NSN) stormed the camp at the Domain Parklands, which was established in 2006 by Krautungalung Elder Robbie Thorpe.

Fifteen people have been charged over the attack, including violent disorder, affray, assault, and contravening bail conditions. NSN leader Thomas Sewell was denied bail after prosecutors deemed him an "unacceptable risk" to community safety.

However, the attack has not been investigated as a hate crime, despite the AFP having the power to do so and new anti-vilification laws introduced in Victoria earlier this year.

Twenty-one members of the federal crossbench jointly wrote to the Albanese Government, Victoria Police, the AFP, and

the Offices of Public Prosecutions, urging authorities to take action.

In a response to the letter seen by *Southbank News*, the AFP Commissioner Krissy Barrett said: "while on face value this incident may appear to meet the definition of hate crimes and terrorism offences ... police must examine and consider all evidence available."

The Commissioner also noted that the investigation into the attack on Camp Sovereignty remains ongoing and is being led by Victoria Police, with the AFP supporting through the National Security Investigation Team in Victoria.

When *Southbank News* asked Victoria Police why hate crime charges were not laid, a spokesperson said police would always apply the "strongest charges available".

In April 2025, Parliament passed the *Justice Legislation Amendment (Anti-Vilification and Social Cohesion) Act 2025* to strengthen Victoria's anti-vilification

laws, introducing harsher penalties for incitement and threat offences.

Senator Lidia Thorpe said the AFP and Victoria Police were showing that they did not care about the safety of First Peoples.

"The AFP has the power to investigate organised extremist violence and hate crimes, yet there have been no federal charges," she said.

"If neo-Nazis stormed any other place of worship with weapons, it would be treated as a national security threat. Imagine if this had happened at a church, mosque or synagogue. The double standard is undeniable and unacceptable."

She has called on the AFP to immediately lay hate crime charges, dismantle the networks behind the organised attack, and identify the NSN as a terrorist organisation.

Senator Thorpe also criticised Victoria Police's handling of the incident.

"Victoria Police must explain why they failed to intervene and use the hate crime

and vilification laws that already exist. There should also be an independent investigation into the failures of Victoria Police on the day," she said.

On October 29, Senator Thorpe tabled a petition in the Senate with more than 400,000 signatures calling for the attack to be investigated as a hate crime.

Melbourne federal MP Sarah Witty told *Southbank News* she was disgusted by the attack and wanted to reiterate her care for, and solidarity with, the First Nations Australians who bore the brunt of the disgraceful actions of neo-Nazis and their supporters.

"I expect to see the people who initiated and participated in the attack held to the full force of the law," she said.

"I condemned the attack at the time it occurred, and I reiterate my care for and solidarity with the first nations Australians who bore the brunt of the disgraceful actions of neo-Nazis and their supporters." •



CIRCULAR DESIGN COLLECTIVE

Celebrate Recycling Week with us.
Free Activities. Music. Coffee. Community BBQ.

SUNDAY 16 NOVEMBER 12pm to 3pm

Munro Street, South Melbourne
(opposite #80 between Montague and Johnson Streets)

PRESENTED BY

FB IDEAS
INNOVATION DIVERSITY EXPERIMENTATION ACTIVATION
FISHERMANS BEND

MORE INFO



SUPPORTED BY



GAMUDA LAND

(nobull)

PIANOS
RECYCLED



Λ S Ñ O 7



arts bus
ARTISTS FOR KIDS CULTURE

Quiet
RIOT





Southbank Evening Walking Group steps out for safety and connection



What began as a small fitness idea among neighbours has quickly grown into one of Southbank’s most positive community movements.

WORDS BY
SEAN CAR



The Southbank Evening Walking Group, founded by residents Zeel Patel and Kaewkor (Kel) Sucharitchan earlier this year, has been gathering steady momentum – bringing locals together each night to walk, talk and reclaim their neighbourhood streets after dark.

Supported by Southbank Neighbourhood Watch, the group hosted its biggest event yet on October 20, when around 30 residents joined Lord Mayor Nick Reece and members from Southbank Police Station for a community walk through the precinct.

Ms Patel said the idea for the group started simply: to stay active and meet people during winter. “I started this because I wanted to keep



fit, get to know my community, and feel safe walking in the evenings,” she said. “It started with just a few of us chatting online, and very quickly, it turned into something meaningful – people meeting every night, connecting, and exploring Southbank together.”

The group meets Monday to Friday at 7.30pm outside Boyd Community Hub, setting off on an hour-long walk along different local routes depending on the night. Some go as far as MSAC or across the Yarra River to Docklands. Attendance typically ranges between two and 10 people per walk, but the October 20 event drew a much larger crowd.

Ms Patel said the presence of the Lord Mayor and local police was an important show of support for a community-led initiative focused on safety and inclusion. “It was fantastic to see so many people come together, especially women, to talk about what safety means to us in our own neighbourhood,” she said. “The Lord Mayor was very supportive and spoke about how



great it is to see residents taking the lead on creating safer spaces.”

Women’s safety has become one of the group’s biggest drivers. Many participants, Ms Patel said, had avoided walking alone at night before joining. “As a woman, you’re always conscious about being out alone after dark,” she said. “Now we have this group that’s open to everyone – people bring their kids, their dogs, their partners – and it’s just a really safe and friendly space.”

Ms Patel’s own dog, Coco, has also become a familiar face on the nightly walks. “It’s good motivation,” she said, laughing. “Even on cold nights, I can’t skip a walk when Coco’s waiting.”

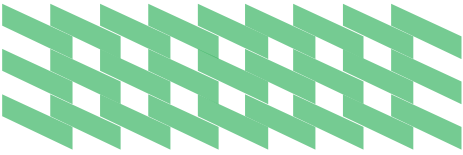
Chris Milner, convenor of Southbank Neighbourhood Watch, said the group had become an inspiring example of how residents could build stronger, safer communities from the ground up. “We’re obviously proud to support them, because it’s such a good initiative,” Mr Milner said. “It’s great for physical and





mental health, it gets people out of their apartments, and most importantly, it connects people who might otherwise not know their neighbours.”

The walking group has been attracting growing interest on local social media, with new members joining each week. Walks will continue until late November, before taking a short break over the Christmas period and returning in mid-January.

Ms Patel said she and her co-organiser hoped to apply for a small community grant next year to host another large group event. “This has shown us that there’s a real appetite for connection in Southbank,” she said. “We’ve gone from a small walking group to a network of friends who look out for one another – and that’s exactly what makes a community stronger.” ●





Arthur Daley's

Melbourne's Bargain Basement.

Discover amazing deals at Arthur Daley's! From homewares to toys, stationery to party supplies, we've got something for everyone.

Huge range, incredible prices.
Hurry in, stock changes daily!

**Nicholas Building Basement,
33-37 Swanston St**

03 9639 3665



Supporting business



Construction partner: Design & Construction

CYP-BS00431

Ongoing flash flooding in Southbank

As Southbank is built on swamp land, it is prone to flooding. The area I would like to highlight is the corner of Whiteman and Clarendon streets. The Whiteman St area is notorious for flooding due to its low-lying nature.

WORDS BY
BUBBLES SEGALL



Background

In 2016 a new tram track was built on the corner of Whiteman St and Normanby Rd to cater for the new low-floor G-Class trams. The tram track was raised and Whiteman St was narrowed. While this kept the tram tracks flood free, water that had previously spread across the tram tracks to the northern side of Normanby Rd was diverted to Whiteman St. This greatly increased the height of flooding in Whiteman St and consequently the back-up of water where Whiteman St drains into Clarendon St. Significant rainfall coupled with high tide along the Yarra River causes severe flooding, triggering major disruptions to residents, businesses and traffic in the area. The risks outlined below are critical and growing with each flooding event.

Vehicles

During flooding, vehicles attempt to navigate the intersection. In trying to avoid the deeper water in the inside lanes there have been many near misses of both other vehicles, trams, and pedestrians attempting to cross.

Cars travelling down Clarendon and Whiteman streets cause waves of water to

enter Vue Grande apartments located at 63 Whiteman St and the local IGA located at 42-28 Clarendon St.

Emergencies

If residents need to evacuate the building due to a fire, they cannot leave the building as the water totally covers the footpath to a height where it enters at the level of the first step inside the building, and where the footpath meets Whiteman St the depth is more than half a metre. There is no alternative exit available as the water level at the garage entrance is equally as high and even the exit through the IGA is not possible as water also blocks their entrance on Clarendon St.

Floodwaters block roads and pathways, hindering the movement of emergency vehicles. This includes ambulances, police and emergency services. This delay can adversely affect response times and access to affected areas.

A fire at the time of flooding would be a major disaster with lives put in danger as people cannot evacuate.

What needs to be highlighted is that flooding has lasted for as long as ten hours when there is a high tide and considerable rain in the Yarra basin.

Health

Floodwaters can contain sewage, chemicals, and other pollutants that can lead to infections or other health issues. Sharp objects, broken glass, and other debris can be hidden beneath the water's surface, posing a risk of cuts and injuries. If the water is contaminated, floodwater can lead to infections or other health issues, particularly for those with open wounds or reduced immunity.

Rats, which carry numerous serious diseases, have been seen in apartment building car parks trying to escape flood waters.

Mobility

Floodwaters make it difficult or impossible to manoeuvre wheelchairs, mobility scooters, prams or walking frames. When individuals attempt to push their wheelchairs through the water to get home their equipment is damaged.

People attempting to wade through the floodwaters are at risk of falling and being injured by hidden objects in the water.

The flood on Sunday, October 26 highlighted another dangerous obstacle. Two manhole covers on the pavement in Clarendon St were removed to allow more drainage for the flood water. The water

obscured these open holes and it was pure luck that individuals trying to wade up the Clarendon St footpath did not fall into them.

Moving in and moving out

If new residents are moving into the building or residents are moving out and it coincides with flooding, the move has to be cancelled. Moving companies may charge cancellation or rescheduling fees if the move is delayed or cancelled due to flooding. Temporary storage may be needed for belongings if the move cannot proceed, adding another expense to the resident. Availability for new moving dates might be limited, especially during peak times.

These disruptions can cause significant inconvenience and stress, particularly if it coincides with other pressing commitments.

IGA

The IGA's main delivery day each week is Thursday, starting at 7am. If it is flooding this hampers deliveries. Additionally, the accessibility of the business is compromised, deterring customers during flooding events which leads to a loss in sales.

Water damage


Water entering the IGA and Vue Grande cause recurring damage to the entrances of these buildings. This also causes deterioration of the pavement and driveways.


Conclusion

These issues cause immense stress to residents, staff and businesses. The unpredictability of flooding combined with inadequate infrastructure leaves people feeling powerless.


The City of Melbourne has been working on these issues; however, the problem has been ongoing since 2016 and needs addressing. Nine years is an exceptionally long time for these problems to be resolved.

In the interim, procedures to ensure Clarendon St is closed to traffic at City Rd and Whiteman St is closed at Cecil St during flooding, need to be put in place as a matter of urgency. ●





BOOK A TOUR TODAY



Future Focused
THE CITY SCHOOL WHERE GIRLS EXCEL

ACADEMY
OF MARY IMMACULATE



Hannah Dong

A FREE 15 FOR EVERYONE: PARK, DASH, DONE

You can now park for free for 15 mins in any City of Melbourne metered parking space.

Good news for anyone who's ever needed to make a quick stop somewhere around our city - you can now park for free for 15 minutes in any metered parking space in the City of Melbourne

Whether you're dashing in for a coffee, picking up dry cleaning, or chasing that last elusive Pokémon, all paid street parking bays now offer 15 minutes of free parking through the EasyPark app.



You can stop in a No Parking space for up to 2 minutes.

The program was first rolled out in the CBD in 2023, and based on its success, the City of Melbourne has now expanded it across the entire municipality. Since its launch, drivers have clocked up more than 15 million minutes of free parking and saved over \$1.3 million.

The move has received a big thumbs up from the small business community.

"It's a fantastic initiative. A lot of our traders rely on convenience - people stopping on their way to work or school, or making a quick stop after hours," said Sylvia Hungria, President of the North and West Melbourne Precinct Association.

As the owner of a small business herself, Sylvia knows the difference parking can make to a business bottom line.

"Anything that makes it easier for people to support their local traders is a win for our small business economy. The ability to park easily for 15 minutes can be the difference between someone deciding to stop and support a local business, or driving past. It's a simple idea with a big impact," Sylvia Hungria said.

Some locals have really made the most of it. One particularly efficient Melburnian notched up around 1,100 free sessions in a single year, averaging about three quick stops a day.

Keep in mind: you get 15 minutes free parking per EasyPark zone each day. You could use 15 minutes in one area, then 15 in another, but multiple stops in the same zone count toward the same 15-minute daily total.

Melbourne is also making short-stop parking easier with 2-minute 'No Parking' spaces. You can stop in these areas for up to two minutes, provided you stay within three metres of your vehicle. They are ideal for quick pick-ups and drop-offs, such as passengers, bags, or deliveries, and are usually placed as the first space after intersections in the central city, making them easy to spot and use.

So, next time you're out and about doing a quick errand, open the EasyPark app, start a parking session and stop that session when you leave. If you're in and out within 15 minutes, we'll waive the parking fee.



Use the EasyPark app to access the free parking.

4 TOP TIPS TO AVOID FINES

- **Read the signs.** Make sure you understand the time limits, restrictions, and whether it's a loading zone, disabled bay, or clearway. Even if you've parked there before, signage can change.
- **Don't overstay your welcome.** If it's a 2P area, that means a two-hour maximum, even if you keep topping up your payment. You must leave the area after the time limit has ended.
- **Use the right bays.** Loading zones are for trucks, couriers, taxis, and G-class registered vehicles — not for popping in for a coffee or a loaf of bread. Use the 15-minute free parking instead.
- **Get your rego right:** When using the EasyPark app, make sure you enter your correct vehicle registration and parking zone number. Pay close attention to 'O' and zero when entering your registration.

For more info visit
melbourne.vic.gov.au/free15min

KEEP IN TOUCH

To stay connected with all the latest news from the City of Melbourne, follow us on social media and subscribe to *Melbourne News* at

news.melbourne.vic.gov.au

Connect with us

[/cityofmelbourne](https://www.facebook.com/cityofmelbourne)
[@cityofmelbourne](https://www.instagram.com/cityofmelbourne)
[@cityofmelbourne](https://www.x.com/cityofmelbourne)





Community Safety Officers hit Melbourne's streets as council unveils \$2m patrol program

The City of Melbourne's new Community Safety Officers (CSOs) began patrolling inner-city hotspots on November 3, with Lord Mayor Nick Reece declaring the 11-member team a "big step" towards a safer and more welcoming city.



WORDS BY
JON FLEETWOOD



Speaking alongside councillors Rafael Camillo and Gladys Liu, Cr Reece said the uniformed officers would provide a visible presence across known trouble spots and neighbourhoods including Elizabeth St South, Bourke St, Swanston St, Carlton, Docklands and Southbank.

"We want a Melbourne where every person feels safe and every person can be safe," the Lord Mayor said. "This is the biggest shake-up to safety arrangements in Melbourne since the introduction of PSOs almost 15 years ago. It's a big step, but it's a necessary step."

Cr Reece said the CSOs were authorised officers of the City of Melbourne with powers to enforce local laws, issue directions and, where necessary, make arrests.

"They absolutely can make arrests and, importantly, they are trained and equipped to do so,"

he said, adding that powers cover "anti-social and aggressive behaviour, and consumption of alcohol or drugs in public places".

Officers will patrol seven days a week, working 11-hour shifts to align with peak periods. They will wear protective vests and body-worn cameras and carry handcuffs.

The Lord Mayor stressed CSOs were not a replacement for police and did not have investigative powers.

The program drew more than 600 applications for the 11 roles, with many successful candidates bringing experience from policing and corrections.

"We've had six weeks of intensive training," Cr Reece said, citing modules in de-escalation, trauma-informed practice and mental health. "Sometimes the question will be, 'Hey, what are you up to?' – most of the time it will be, 'do you need help?'"

During an earlier trial involving two security officers, the City recorded 1500 incidents managed and more than 50 people connected with support services.

However, as reported by sibling



Xinru Yang



publication CBD News, homeless people, legal services and community health organisations raised concerns over the behaviour of the security guards, alleging that they had intimidated people begging and sleeping rough.

The council has allocated about \$2 million to launch the program, covering equipment, training, salaries and oversight. Cr Reece said the CSOs were designed to work "hand-in-glove" with Victoria Police, complementing the council's Safe City Camera operations. He also confirmed the City was doubling its camera network to 100 over the next 12 months.

The rollout will be reviewed after six months and again after 12 months. "If more resources are needed, they will be there," he said. ●

Twenty-storey Southbank tower planned for Sturt St

A proposed \$80 million, 20-storey residential tower on Sturt St has received conditional support from City of Melbourne planning officers, who have advised that the Minister for Planning should not object to the project.

WORDS BY
JON FLEETWOOD



The development at 141–151 Sturt St, lodged by Woodbrooke Property Pty Ltd and designed by Rothelowman architects, which previously owned and occupied offices at the site, seeks approval for the demolition of existing buildings and the construction of a mixed-use tower featuring 180 dwellings, a shop, food and drink venues, and creative art spaces.

Located within the Melbourne Arts Precinct, the proposal also includes a through-block pedestrian link connecting Sturt and Dods streets, and 734 square metres of creative spaces on the first floor, which have been conditionally supported by Creative Victoria.

According to the council's ministerial planning referral, the building is described as a "contextually responsive and high-quality form" that would contribute positively to the broader Arts Precinct and provide a strong public realm outcome, including human-scale design and improved pedestrian connections.

The tower is proposed to reach 66.23 metres in height and will include 155 car spaces and 226 bicycle spaces.

However, the project has drawn eight objections, with concerns raised about height, insufficient setbacks, overshadowing, overlooking, noise and wind.

Planning officers found that the design met most relevant standards and recommended that the councillors approve the planning

referral at their November 11 Future Melbourne Committee (FMC) meeting.

It was recommended that, for the project to proceed, the developer must confirm that 80 per cent of the combined ground-level frontage to each street comprises entries or windows, in line with the mandatory design requirement.

Further modifications to the layout and clearance heights of internal accessways will also be required to accommodate council waste collection, in accordance with the amended Waste Management Plan.

The council will now advise Planning Minister Sonya Kilkenny that it supports the application subject to conditions, as the proposal exceeds the 25,000-square-metre threshold that places it under ministerial planning control.

If approved, the development would represent another major addition to Southbank's rapidly evolving skyline and reinforce Sturt St's role as a key interface between residential living and Melbourne's creative heart. ●



JELLIS CRAIG PORT PHILLIP

Welcomes May Wang

With over a decade of experience in high-end residential sales, off-market prestige deals, and boutique project campaigns, May has become a trusted authority in the Southbank and inner-city property market. She brings a calm, insightful, and client-focused approach to every interaction, earning a reputation for connecting buyers with homes that perfectly align with their lifestyle goals.

Fluent in Mandarin and Cantonese, May offers a unique cultural fluency that bridges Melbourne's vibrant inner-city market with a global audience. Her attentiveness, integrity, and sharp negotiation skills have made her a go-to professional for both local and international clients seeking results in this dynamic sector.

As part of Jellis Craig's premium network, May delivers a boutique, high-performance service backed by one of Melbourne's most respected brands. Combining Jellis Craig's award-winning marketing strategies with her deep market expertise, she ensures every property stands out, attracting qualified buyers locally and abroad.

Curious about your property's value? Get in touch with May today for an appraisal.



May Wang
Sales Consultant
0481 436 048 | MayWang@jelliscraig.com.au

JellisCraig

Malthouse Theatre unveils bold and diverse 2026 season

“

Malthouse Theatre has lifted the curtain on its 2026 season, unveiling a daring and wide-ranging program that spans contemporary drama, radical reimaginings, cabaret, comedy and dance – reaffirming the Southbank institution’s reputation as one of Australia’s most innovative performing arts companies.

”

WORDS BY
SEAN CAR



Executive producer and co-CEO Vivia Hickman described the new program as a celebration of artistic diversity and ambition.

“Our 2026 program is a testament to the extraordinary creativity of artists working today,” Hickman said. “Through their work, we are opening our doors to stories that not only inspire and entertain but also speak with urgency to our audiences and the complex times we live in.”

The season opens on February 13 with *Black Light*, a powerful new Malthouse commission written and directed by Jada Alberts (*Brothers Wreck*), starring real-life sisters Lisa and Rachael Maza. The work offers an intimate portrait of contemporary Blak motherhood and resilience.

Following in May, actor and playwright Megan Wilding brings her sharp wit to *Game.Set.Match.*, a love story that turns into a revenge thriller, directed by Malthouse’s Jessica Arthur. That same month, the inventive theatre collective Bloomshed presents a modern twist on *Pride and Prejudice*, blending Jane Austen’s classic romance with commentary on Australia’s housing crisis.

In June, Australian stage icon Paul Capsis



Christie Whelan Browne in
All About Eve. Photo: Nicole Reed.



Megan Wilding in *Game.Set.Match*. Photo: Guilia McGauran.



Rachael Maza and Lisa Maza in
Black Light. Photo: Nicole Reed.

teams up with Adam Noviello in *House of Rot: Grey Gardens*, a cabaret-infused homage to two reclusive women living in a decaying mansion, created by Dino Dimitriadis and Victoria Falconer.

Acclaimed choreographer Stephanie Lake returns to Malthouse in July with *Vista*, a high-energy contemporary dance premiere featuring Lake’s signature physicality and poetic imagery. August brings *Break of Day*, Steve Rodgers’ moving Australian drama directed by Sarah Goodes, starring Kat Stewart and Richard Piper. The same month, Roslyn Oades and Bob Scott’s *The Nightline* invites audiences to explore hundreds of late-night voice messages left by insomniacs, shift workers and night owls in a deeply immersive experience.

Another standout is Michelle Lim Davidson’s *Koreaboo* (September 24 to October 10), a tender exploration of identity and belonging set in Seoul, following its sold-out Sydney season with Griffin Theatre Company.

Incoming artistic director Dean Bryant will close the year with Ivo van Hove’s

electrifying stage adaptation of *All About Eve*, starring Christie Whelan Browne in the dual roles of Margo Channing and Eve Harrington.

“*All About Eve* is a story I’ve been obsessed with putting on stage for years,” Bryant said. “It’s wicked, hilarious, and full of juicy roles for actors. Having Christie play both Margo and Eve will be a theatrical event unlike anything we’ve seen.”

The program also features *Ritual*, a climate change-themed work developed through Malthouse’s Suitcase Series, and the Australian Trans Theatre Festival, opening in January.

Tickets for all productions are on sale via malthousetheatre.com.au ●

Buxton Contemporary unveils major solo exhibition by Hany Armanious

Buxton Contemporary will close out 2025 with a landmark exhibition by one of Australia’s most acclaimed sculptors, Hany Armanious, whose inventive and playful approach to form has redefined the boundaries of contemporary art.

WORDS BY
SEAN CAR



Opening November 21, *Hany Armanious: Stone Soup* is presented in partnership with the Henry Moore Institute in the United Kingdom, following its debut in Leeds last year. The Melbourne presentation expands significantly, showcasing more than 80 works – including a major new commission – and will run until April 11, 2026.

Guest curated by Laurence Sillars, head of the Henry Moore Institute, with Samantha Comte and Charlotte Day from The University of Melbourne, the exhibition spans the full breadth of Armanious’s practice, from his renowned resin-cast

sculptures to his lesser-known two-dimensional works.

Armanious is celebrated for transforming everyday objects into extraordinary reflections on perception and process. Using found materials as his starting point, he casts them in resin at a one-to-one scale, preserving every imperfection to highlight the act of creation itself. His works explore how we see, value and relate to the objects that populate our lives.

“This exhibition captures the breadth of his practice – presenting a body of work that favours ambiguity and poetic possibility over overt symbolism,” Samantha Comte, head curator of art museums at The University of Melbourne, said. “His art questions how we use objects to anchor ourselves in the world – an enquiry that feels particularly important today.”

Highlights include the six-metre canvas *Water Lilies* (2018), held in Auckland Art Gallery’s collection, and a new site-specific wall work printed directly onto the gallery using large-scale commercial signage technology. The exhibition opens with *Body Swap* (2015), a dual-sided mirror sculpture that invites viewers to see themselves and their surroundings from fresh perspectives.

In a characteristic twist, Armanious also subverts Buxton Contemporary’s



architecture by turning the gallery’s vertical columns into horizontal plinths for his sculptural works.

“We are thrilled to bring this significant international exhibition to Melbourne,” Charlotte Day, director of art museums at The University of Melbourne, said. “Armanious has an extraordinary ability to transform the everyday into something profound and mysterious.”

Featuring loans from leading Australian and New Zealand institutions, *Stone Soup* will be accompanied by a richly illustrated monograph published in collaboration with the Henry Moore Institute.

Hany Armanious: Stone Soup runs from November 21, 2025, to April 11, 2026, at Buxton Contemporary, Southbank. Entry is free.

buxtoncontemporary.com ●



Emergence opens at Southgate: A celebration of art, resilience and recovery

A powerful new exhibition exploring creativity, recovery and the human spirit has opened at Southgate Gallery in Southbank, shining a light on how art can help rebuild lives after trauma.

WORDS BY
SEAN CAR



Titled *Emergence*, the exhibition features works by Viren Barar, a former IT professional and self-taught artist who turned to

painting following a massive stroke nearly three years ago that left him with aphasia and apraxia, severely affecting his speech and comprehension.

Officially launched on November 9, the event was attended by City of Melbourne councillor and community and city services portfolio lead Gladys Liu, alongside representatives from the Stroke Foundation, local residents and supporters from across Melbourne's creative community.

Supported by the City of Melbourne's Connected Neighbourhood Small Grant Program and Southgate Gallery, *Emergence* is both a deeply personal journey and a broader message of hope – showing how art can transform lives, foster connection

and promote wellbeing.

"This exhibition isn't just about celebrating an achievement," the organisers said. "It's about igniting passions, uncovering potential, and reminding us that creativity has the power to heal and connect."

The opening included an information session with Stroke Foundation StrokeSafe speaker Antonia Arfaras and speech pathologist Zoe Singer, who shared insights into the realities faced by stroke survivors and their carers. A live music performance and a children's art workshop, *Paint the Dream*, added to the sense of community and inclusion that defines the exhibition.

Viren's bold, abstract works capture his experience of navigating communication



challenges and rebuilding identity through creative expression. Each piece reflects what he describes as the transformation of "the noises in the brain into an immersive force" – an invitation for viewers to find beauty in resilience and meaning in imperfection.

Cr Liu praised the exhibition for embodying the spirit of community and recovery that the Connected Neighbourhood program aims to support.

Emergence runs until November 30 at Southgate Gallery (Shop U5, Upper Level, 3 Southgate Avenue, Southbank). Entry is free. ●

Let's Party! Fashion for Kids turns the NGV into a disco of creativity

This summer, the National Gallery of Victoria will sparkle with colour, music and imagination as it opens *Let's Party! Fashion for Kids*: Designed by Danielle Brustman, a free interactive exhibition transforming the NGV's Children's Gallery into a vibrant fashion playground.



Portrait of Danielle Brustman Photo: Belle Stewart.

Opening on November 28, the exhibition invites children and families to step into a world of dressing up, dancing and self-expression through fashion. Designed by award-winning Melbourne designer Danielle Brustman, *Let's Party!* combines dazzling displays from the NGV's Fashion and Textiles Collection with immersive, hands-on experiences for young visitors.

At its heart is a glowing dance floor surrounded by glittering disco balls, where kids can choose songs from a jukebox and "dance like no one's watching." Around the space, more than 35 spectacular garments and accessories will be on show, from haute couture to streetwear, featuring designers such as Issey Miyake, Romance Was Born, Imane Ayissi, Lisa Waup x Verner, Nixi Killick, Jean Paul Gaultier and Yves Saint Laurent.

Brustman has reimagined the gallery as a lively, theatrical setting full of texture, light and movement.

Known for her bold use of colour and geometric design, she has created what NGV director Tony Ellwood AM described as "a joyful and inclusive experience that encourages children to explore fashion, express themselves and celebrate who they are through the fun and freedom of play."

A major inspiration for Brustman's

design is Japanese fashion designer Tomo Koizumi's Look 27, a dazzling rainbow of 200 metres of ruffled organza that embodies the exuberance and energy of the exhibition.

Children will also find a dress-up zone filled with costumes shaped like stars, hearts and lightning bolts, created by Melbourne costume designer Brynna Lowen. Custom mirrors styled like vintage vanities invite kids to admire their outfits before stepping into a photo booth for their own "runway moment."

Visitors can also decorate party hats with stickers and sequins to wear and take home, adding to the atmosphere of creativity and celebration.

Minister for Creative Industries Colin Brooks said the exhibition was "a fun and creative activity for kids" that reflected the government's commitment to making the arts accessible to families across Victoria.

Let's Party! Fashion for Kids: Designed by Danielle Brustman opens November 28 and runs until May 6, 2026, at NGV International, St Kilda Rd. Entry is free.

ngv.melbourne ●

Tschabalala Self Skin Tight



Tschabalala Self, Blue Woman 2025, installation view, Australian Centre for Contemporary Art, Melbourne, 2025. Courtesy the artist, Pilar Corrias, London, Galerie Eva Presenhuber, Zurich / Vienna and Petzel Gallery, New York. Photograph: Andrew Curtis.

艺术家/Artists:
Tschabalala Self

时间: 2025年11月15日 下午3 – 4:30
Time: 3 – 4:30 pm, 15 November 2025

策展人/Curator:
Dr Shelley McSpedden,
Myles Russell-Cook

地点/Address:
111 Sturt St, Southbank VIC 3006



FREE EVENT
Scan for Registration
免费活动
扫码预定

中文艺术导览
Chinese Language Tour

ah art
acca
Australian Centre for Contemporary Art



PURR-FECTLY SAFE: NEW RULES KEEPS CATS AND WILDLIFE SAFE

Finn is a healthy and happy indoor cat... and an expert in casual rejection and being judgemental

If your cat loves to stalk socks or pounce on invisible prey, that same instinct can spell danger outdoors. From October 2025, new rules in the City of Melbourne will help protect both cats and native wildlife.

Cats will need to stay on their owner's property from 6 pm to 8 am and avoid sensitive areas such as rivers, waterways and major parks unless safely leashed or in a carrier.

The changes were introduced in conjunction with the City of Melbourne's Domestic Animal Management Plan 2025-29, which guides responsible pet ownership across the city. Together, they form part of a long-term effort to balance animal welfare with the protection of native species.

These measures aren't about restriction – they're about keeping cats safer and healthier. Indoor cats are less likely to be injured, pick up disease or go missing, and they tend to live longer.

Jade Currie, Animal Behaviour Consultant at the Lost Dogs' Home, says indoor life can be just as rewarding with a few smart adjustments:

"Provide vertical spaces, hiding spots, play opportunities and window perches – enrichment lets cats express natural behaviours and reduces stress." She adds that the key is patience and positivity.

"Introduce new experiences slowly and associate them with good things – treats, toys and praise. That way, cats feel safe, curious and confident in their indoor world."

Cr Dr Olivia Ball, Deputy Lord Mayor and portfolio holder for Environment, stresses why the changes are necessary:

"Cats can't help having a strong hunting instinct, day and night, no matter how much we love and feed them. But our native wildlife hasn't evolved to deal with feline predators, and unfortunately, cats have done immeasurable damage since being introduced to Australian ecosystems."

She also reassures owners: "The great majority of cat owners in the City of Melbourne already keep their cat inside all the time. For the rest, who are used to roaming, this is a big change, but it's vitally important. Please reach out for information and advice on how to smooth the transition and keep your cat happy and healthy indoors."

QUICK TIPS FOR A HAPPY INDOOR CAT

- **Vertical space:** Cat trees, shelves or window perches let cats climb and observe.
- **Playtime:** Wand toys, laser pointers, or puzzle feeders satisfy hunting instincts.
- **Safe outdoors:** Catio enclosures or harnesses let cats enjoy fresh air without risk.
- **Positive reinforcement:** Use treats and toys to help cats explore new spaces confidently.
- **Gradual transition:** Increase indoor time slowly, especially for outdoor-loving cats.

Visit melbourne.vic.gov.au/newcatrules for more information.

The City of Melbourne currently provides guides and practical support, including low-cost desexing and vet checks, to help owners adapt to the new rules. This is in addition to providing free registration for all cats and dogs for the next registration period (April 2026 to April 2027).

Containment isn't just about rules or restrictions: keeping cats safe at home protects wildlife – and gives our feline friends the long, comfortable lives they deserve.



Indoor cats often live longer.

Melbourne's guide to affordable food



Melbourne is famous for its cafés, markets, and world-class dining, but not everyone in our city can easily put a healthy meal on the table. The rising cost of living and financial pressures mean more people are skipping meals or relying on food relief services.

The City of Melbourne is stepping up to make a real difference. The Community Food Guide and Map is a handy tool to help anyone find free or low-cost meals, food banks, community gardens, and cooking classes in their neighbourhood.

Programs like programs like Open Table's Local Lunch Club at Kathleen Syme Library bring people together over a free vegetarian meal made from donated ingredients. It is not just about food, there is live music, friendly faces, and a chance to learn about local community services. Similarly, our FareShare Freezer located at the library provides nutritious prepared meals to anyone in need, etc provides pre-prepared, nutritious meals to anyone in need, with more than 10,000 meals shared since July 2024.

For fresh, affordable produce, residents can visit the Community Grocer in Carlton or the Kensington Community Fresh Food Market.

If you would like to grow your own vegetables, the city supports communal gardens like the Kensington Stockyard Food Garden and the FoodCubes at Kathleen Syme Library.

Residents of all ages can join Grow Together workshops, learning practical gardening skills to grow your own produce, while connecting etc community. You can also pick up free seasonal seeds or participate in the Gardens for Wildlife program, growing native plants that are good for cooking and local wildlife.

Through the Food City 2024-34 Policy, we are working with local groups and the food industry to create a sustainable, resilient, and inclusive food system, so no one has to choose between paying bills and feeding their family.

AFFORDABLE FOOD IN MELBOURNE AT A GLANCE

- **Community Food Guide & Map** – Find community meals, food banks and affordable groceries near you.
- **Local Lunch Club** – Free monthly meal provided by Open Table and live music at Kathleen Syme Library.
- **FareShare Meals** – Free pre-packaged meals are currently available at Kathleen Syme library.
- **Local markets** – Fresh, low-cost produce at the Community Grocer in Carlton and Fresh Food Market in Kensington.
- **Grow Together Workshops** – Learn to grow your own fruit and veggies sustainably.

Visit melbourne.vic.gov.au/news and search 'affordable food' to find out more.

Mildura council has its eye on one of Melbourne's most famous pieces of public art

“

In a bizarre PR stunt, Mildura Rural City Council has placed Melbourne “on notice”, requesting the transfer of Ron Robertson-Swann’s sculpture *Vault* from its current home in Southbank to the state’s tropical north.

”

Srishti Oberoi



WORDS BY
JON FLEETWOOD



The multangular, xanthic sculpture – colloquially referred to as the “Yellow Peril” – stands in the forecourt of the Australian Centre for Contemporary Art (ACCA) and has long been no stranger to public debate and local opprobrium.



However, Mildura Council’s zany attempt to have it relocated to the front lawns of the Mildura Arts Centre may be one of the stranger proposals for Ron Robertson-Swann’s first major work.

Deputy Mayor and councillor for arts, culture and heritage at Mildura Rural City Council, Helen Healy, confirmed the city is ready to receive and honour the sculpture.

“We’ve made Melbourne a fair offer,” Cr Healy said. “Mildura feeds Melbourne every day. Those trucks that deliver your produce could easily return with a work of art.”

“We have the community, the space and the respect to give *Vault* the welcome it deserves. And as we like to say up here in Tropical North Victoria, we take art and sunshine equally seriously.”

Relocating the sculpture to Mildura would reunite it with its companion piece,

Beethoven – a decision the sculptor, Ron Robertson-Swann, welcomes.

“*Beethoven* has lived with great respect in Mildura for more than 50 years. Reuniting these works would be an appropriate and meaningful tribute to their shared history,” he said.

Shane Jacobson, of *Kenny* fame, has also shared his two cents on the matter, calling for the relocation.

Jacobson, who also serves as Mildura’s official tourism ambassador, said: “[Mildura is] ready to step in and care for a piece of art that Melbourne has neglected for decades. If Melbourne won’t give *Vault* the home it deserves, Mildura will!”

“Let’s not forget, Melbourne once stuffed it in a storage shed like an unwanted toy. We’ve got the space, the sunshine, and, frankly, the trucks are already waiting.”

Vault was commissioned by Melbourne City Council in 1978 following a public competition for a sculpture to feature in the newly-built City Square.

It was the first major public artwork for sculptor Ron Robertson-Swann, who had previously worked as an assistant to Henry Moore.

During its installation in the grey concrete of Melbourne’s City Square, the piece attracted criticism from councillors and the conservative media, led by *The Sun*.

It became the focus of an intense public art debate, which resulted in the sculpture being dismantled and moved to Batman Park, where it sat in the mud for some time before being reconstructed.

It was later relocated to the ACCA forecourt in 2002, following the creation of the Art Precinct. However, another move now seems unlikely – particularly to Victoria’s Tropical North.

City of Melbourne Lord Mayor Nick Reece told the ABC that *Vault* would not be going anywhere.

“The Ron Robertson-Swann *Vault* sculpture will be staying in Australia’s arts capital, Melbourne,” Cr Reece said.

“I do notice that Mildura has launched a new advertising campaign saying they are the Tropical North of Victoria, so maybe the council should reach out to Coffs Harbour and see if they can pinch their giant banana from the actual tropical north.”

Cr Reece added that it might be a different outcome if Mildura were willing to pay for *Vault*. ●



INNER OWNERS CORPORATION

A new way of managing owners corporations

Integrity | Respect | Energy

Call us now 03 9804 5551 | iocm.com.au

Property experts. **Inside and out.**

SALES | RENTALS | OWNERS CORPORATION

Est. 2019



Developer Time & Place, in partnership with MaxCap Group and Hickory, has announced the completion of stage one of The Queensbridge Building – a milestone that marks the emergence of Southbank’s newest cultural and lifestyle precinct.

WORDS BY
SEAN CAR



Fully sold out, stage one delivers the first residences of what is set to become one of Melbourne’s most distinctive new addresses. With stage two now under way and due for completion by the end of 2025, a limited number of two- and three-bedroom apartments remain, priced from \$890,000 to \$3.35 million.

Anchoring the rapidly evolving Southbank neighbourhood, The Queensbridge Building integrates residential living, luxury hospitality and dining. The project will include the soon-to-open Hannah St Hotel, operated by TFE Hotels, and five new restaurants and bars by The Mulberry Group – the creative minds behind Higher Ground, Hazel and The Kettle Black.

Among the venues will be Coupette Corner Bistro and Bar, Bar Hannah, The Terrace Lounge, Hannah St Coffee, and The Carriage Lounge, a moody late-night retreat designed for intimate gatherings.

Architecture firm Fraser & Partners designed the striking tower, while Melbourne interior practice Flack Studio curated its interiors. Residents will enjoy exclusive access to a range of amenities, including lap pools, wellness spaces, co-working facilities and private outdoor terraces, with Hannah St Hotel services extending to residents through the Clubhouse.

Time & Place director Tim Price said the project was already shaping into “the cornerstone of Southbank’s up-and-coming cultural and lifestyle scene.”

“Affording a rare opportunity for purchasers to secure a David Flack-designed residence, The Queensbridge Building is punctuated by the Hannah St Hotel, new restaurants by The Mulberry Group, and experience-led residences that define the building,” Mr Price said.

“The precinct is certain to become one of Melbourne’s most popular.” ●

AMS Flooring: bringing style, service and convenience to Melbourne’s high-rise homes

For AMS Flooring founders Joseph Cashin and Alex Caldwell, success has come from understanding what makes apartment living different – and tailoring their business to fit perfectly within it.

WORDS BY
SEAN CAR



Founded in 2017, AMS Flooring was created to solve what Joseph described as a “real gap in the market” for trades servicing Melbourne’s inner city.

“We noticed there was a real problem with trades and shops servicing Melbourne CBD, Southbank, and in particular the high-rise markets,” Joseph told *Southbank News*. “So, we founded AMS Flooring to fix this problem, and we’ve been doing it ever since.”

From that idea came a business model designed around convenience: a mobile flooring showroom that brings samples directly to the customer’s apartment. Rather than visiting multiple stores and guessing how a colour might look at home, AMS customers can view samples against their own walls, lighting and furniture – saving time and avoiding the traditional showroom shuffle.

“You’re saving time,” Alex explained. “Instead of going to the showroom, taking samples home, realising you want something different and going back again, we



Joseph Cashin



Alex Caldwell

bring everything to you. From first call to quote can take as little as an hour.”

The company specialises in timber, hybrid, vinyl, laminate and carpet flooring, as well as acoustic underlays – a crucial consideration in apartment living where sound transfer can easily become an issue. AMS also provides commercial flooring, carpet tiles for common areas, and even painting and blinds, offering a complete one-stop renovation service.

“Another major problem we saw was that contractors often didn’t understand what the high-rise market needs,” Joseph said. “We take the time to read through building protocols and understand each site’s acoustic requirements. Every building is different, and we make sure what we install is right for that customer.”

AMS Flooring’s deep understanding of the apartment environment has helped it carve out a strong niche in Melbourne’s high-density market, particularly across Southbank and the CBD, where the business now counts many building managers and strata companies as regular partners.

“Those relationships are really important,” Joseph said. “When a resident wants

their floors done, building managers often recommend us because we know their building protocols, handle lift bookings, compliance and all the details that can make the process stressful for residents. We try to make it as seamless as possible.”

Much of AMS Flooring’s growth has been driven not by advertising, but by word of mouth and the trust it has built through reliability and professionalism.

“We’ve worked hard to build that reputation,” Alex said. “We’re always on time, well presented and deliver what we promise. Most of our work now comes from referrals – people talk to their neighbours, real estate agents, or building managers and say, ‘These guys made it easy.’”

That personal approach continues to fuel their passion for what they do.

“For me, it’s about making a difference,” Joseph said. “We’ve built something unique, and it feels great to know we’re improving people’s homes and experiences.”

Alex agreed: “when you see a customer’s face after their new floors go in – when their apartment is completely transformed – that’s what it’s all about.”

From its base on City Rd, AMS Flooring has grown into one of Melbourne’s most trusted names for high-rise flooring solutions – proving that innovation, community connection, and great service never go out of style.

amsflooring.com.au ●

Indi Southbank opens at Boyd Community Hub



A long-awaited new addition to Southbank's skyline – and to its community heart – has officially opened, with Oxford Properties Group and Investa unveiling Indi Southbank, their first build-to-rent (BTR) development in Melbourne, at the Boyd Community Hub precinct.



WORDS BY
SEAN CAR



Located at 132 Kavanagh St, the 42-storey tower forms part of the broader Boyd Village redevelopment, a landmark project that brings together new housing, public amenities, green space and expanded community facilities in one of Melbourne's most densely populated suburbs.

The ribbon-cutting ceremony on October 13 was attended by Federal Member for Macnamara Josh Burns, Lord Mayor Nick Reece, and representatives from PDG



Corporation, Investa, Oxford, and builder Hamilton Marino.

The \$500 million project delivers 434 apartments, accommodating about 800 residents, with 10 per cent of dwellings set aside as affordable rentals for key workers. It also marks another milestone in Melbourne's emergence as the nation's leading build-to-rent city, following similar projects in the Queen Victoria Market precinct and Docklands.

The City of Melbourne will take ownership of a 900-square-metre new Southbank Library, which will occupy the upper ground

and first floors of the tower and is expected to open in mid-2026. The new facility will more than double the existing library's size, while the heritage Boyd building will be reconfigured to host a greater range of community programs and family services.

Lord Mayor Nick Reece said the project exemplified how private investment could deliver public benefit through well-planned partnerships.

"Southbank is our most densely populated suburb, and we need more homes and better public spaces," he said. "Indi Southbank delivers 434 new apartments, a

new park, and a new library for the community – all in one of Melbourne's most dynamic precincts."

For Investa CEO Peter Menegazzo, the project represents a step forward for renters seeking lifestyle and stability in a competitive market.

"Residents aren't just looking for a place to live – they're seeking a lifestyle. Indi delivers that with premium apartments, hotel-style amenities, and dedicated on-site resident services," he said.

The building's amenities span three levels, featuring a pool, gym, yoga deck, sauna, co-working spaces, dog wash, private dining rooms and a rooftop sky lounge with panoramic city views.

Oxford Properties Head of Australia Alec Harper said the project reflected global best practice in urban renewal.

"Indi Southbank delivers high-quality rental housing at scale, close to where people work, learn and play – aligning with Oxford's mission to invest in vibrant, connected neighbourhoods," he said.

While the tower's approval in 2021 was not without controversy – following community objections over the loss of open space – its completion now marks a turning point for the Boyd precinct, once the site of the former J.H. Boyd Girls' School. ●

FEDERAL MP

A record-breaking sitting fortnight in Parliament

I have just returned from a big sitting fortnight in Parliament House (a record breaking-one).

WORDS BY
JOSH BURNS – FEDERAL MP

On Thursday, November 6, our Parliament had more than 40 divisions (votes) – the second-highest in history. And the week before, the Senate set a 125-year record for the longest-ever question time running for more than three hours.

In all seriousness, our Federal Parliament can feel far away, but the conversations and discussions we have in Canberra matter locally in our community.

This week we expanded the bulk-billing incentive to every Australian, and we boosted the payments to GP clinics that bulk-bill every patient.

There are already more than 1000 clinics across the country that have signed up to become fully bulk-billed. Which means more members of our community will get the healthcare they need for free.



Our investment into Medicare meant that the changes came into place on November 1, and I've already heard from local GPs who know the difference this will make for our community.

No-one should be avoiding getting the healthcare they need because of the cost, and our investment in Medicare will make a real difference.

Additionally, from November 1 we made contraceptive care more affordable and accessible, giving Australian women more choice over their reproductive health. We have introduced new incentives for health professionals to provide long-acting

contraception, which could save Australian women up to \$400 a year.

For years so many in our community have written to me about our environmental laws, and this week I was proud to speak in Parliament as we introduced our *Environment Protection Reform Bill*.

Five years ago, Professor Graeme Samuel released his independent review of our environmental laws. Despite being commissioned by the former Coalition government, the report was left untouched by the former Environment Minister and now Opposition Leader Sussan Ley.

The report told us what so many in our community already knew, our environmental laws are broken.

Our bill introduces National Environmental Standards, a clear definition which will deliver environmental outcomes and give certainty to business.

Projects will be required, by law, to avoid, mitigate and repair damage to our environment, wherever possible.

We are establishing Australia's first Environment Protection Agency, an independent regulator who will oversee compliance, enforce the law and hold serious offenders to account with tougher penalties. Importantly, the EPA will be about

transparency. It will ensure that the environment is considered and taken seriously by industry.

All of this is what Professor Samuel recommended five years ago, and we can get it done. We can't wait any longer.

Finally, this sitting fortnight we passed *Baby Priya's Bill*, an amendment to the Fair Work Act.

Five days after the death of her six-week old daughter Priya, her mother notified her employer where she had worked for 11 years. Her pre-approved parental leave was cancelled.

Baby Priya's Bill is about dignity and respect. It enshrines in law the right for employer-funded paid parental leave for grieving parents experiencing the stillbirth or death of a child.

It's about dignity, and it's a piece of legislation that I was proud got support from the majority of the Parliament, from different political persuasions.

As we head towards the end of the year, I know there is more work to do. People across our community are still doing it tough. We are getting on with the job, and I will be sure to keep you updated.

It's a privilege to represent our community, and we have more work to do together. ●

Your Federal MP for Southbank.

We're here to *help*.
Please *get in touch* if you need *assistance*.

joshburns.com.au

josh.burns.mp@aph.gov.au

(03) 9534 8126

219 Barkly St, St Kilda VIC 3182

JOSH BURNS MP
FEDERAL MEMBER FOR MACNAMARA

f t i joshburnsmp



Spring has sprung in Southbank

Welcome to the November column from Southbank Sustainability Group. We continue to make the most of Melbourne’s warmer and sunny weather in the community garden at the Boyd.

WORDS BY
MARIA TARRANT



It seems many of the locals are doing the same. We have locals either joining us for gardening every second Saturday morning or simply wandering through the garden, often stopping to talk to us while we are watering the garden beds, about the garden and what is planted.

Each season we make a plan about what to plant, building on our knowledge of what does and does not succeed in the garden and experimenting with different vegetables and herbs.

The location of the community garden offers some unique challenges. The site is exposed, and winds are significant throughout the year. Of more significance, the site receives very limited sunlight for much of the year meaning many vegetables will not succeed or take longer to mature.

It is for this reason the beds can look a little empty at certain times of the year and it is why you will see an emphasis on leafy greens such as lettuce, spinach, and sorrel and herbs and other quickly-growing vegetables. Choosing plants with a shorter growth cycle means we can grow multiple crops over the warmer summer months.

This year we will not be planting any tomatoes as we are rotating crops across the different garden beds to minimise the risk of viruses in the soil which can come with planting the same vegetables in the same bed each year. Instead, you will see we have leeks and fennel nearly ready to harvest.



Our sunflowers are growing strongly responding to the sunlight and warmth. We ask that you do not cut or break these off. They have an important role in attracting pollinators to the garden as well as adding a visual pleasure for everyone. You will see we are experimenting with chokos and corn. We would love to hear any suggestions you have for planting. Just send us an email.

The National Recycling Week, organised by Planet Ark each year since 1996, is on again this year between November 10 and 16. We can all help reduce waste and in doing so reduce materials in landfill and reduce greenhouse emissions.

Planet Ark makes the point that since 1996, the recycling rate in Australia has gone from seven per cent (1.5 million total tonnes recycled) to more than 60 per cent and 43 million tonnes of materials recycled. Per person, recycling has increased from just 80kg of material yearly in 1996,



to now about 1700kg in 2025. Have a look at their website for resources and ideas including some especially designed for children recyclingnearyou.com.au/nationalrecyclingweek.

While Christmas and the holiday season are still a while off, do make sure you consider the environmental impacts of your plans and shopping. If you are starting to think about presents make sure to make use of the many local op shops.

If you enjoy some hands-on activity in the garden join us Saturday between 10am and noon every second weekend for a little gardening (no previous experience required) and discussion. We are located in the community garden in front of the Boyd Community Hub. November meet up date is November 22, 2025.

About the group

Southbank Sustainability Group is a solutions-focussed community group of Southbank residents working to bring positive change in sustainability practices. Reach us at southbanksustainability@gmail.com or facebook.com/SouthbankSustainabilityGroup or Instagram on [@southbanksustainabilitygroup](https://www.instagram.com/southbanksustainabilitygroup).

If you are interested in getting involved with Southbank Sustainability Group join us at a Saturday meetup or send us an email. ●



Yu Li

Elevated festivities at Eureka 89

Eureka 89 is Melbourne’s premier destination for those seeking a sophisticated dining experience, ideal for getting into the festive spirit.

Whether during Christmas or while counting down to the New Year, Eureka 89’s menus are meticulously crafted by award-winning executive chef Renee Martillano.

Towering nearly 300 metres above the city and perched atop Melbourne Skydeck on the 89th floor of Eureka Tower, this exceptional dining and event space guarantees that every occasion is extraordinary.

’Tis the season to treat yourself to something special, as Eureka 89 offers a delightful array of events perfect for sharing a meal with your loved ones, creating a magical atmosphere to celebrate Christmas.

On Christmas Eve, indulge in an all-inclusive three-course lunch or four-course dinner option, with pricing starting from \$210 per adult, or join Eureka 89 on Christmas Day for a festive four-course menu, with prices from

\$390 per adult. As you savour these gourmet offerings, soak in the stunning views of Melbourne’s skyline, twinkling with holiday cheer.

To close off the year, ring in the New Year with Eureka 89’s “Elevation New Year’s Eve”, featuring a dining experience that offers the perfect setting to bid farewell to the year in style.

Guests can choose between two areas: the Southern Point Room, which is ideal for gathering with family and friends in a warm atmosphere, or the vibrant Northern Point Room, promising lively entertainment for those eager to celebrate the arrival of the new year.

Prices start from \$595 per adult. Whichever space you select, Eureka 89 guarantees a night to remember, filled with delectable cuisine, spectacular views, and an electric atmosphere.

Lastly, if you are still on the lookout to host an end-of-year event high in the clouds, whether for a corporate function, birthday, or other special milestone, hosting it at Eureka 89 offers a unique location that will leave a lasting impression on your guests for all the right reasons.

Eureka 89 boasts three distinct event spaces designed to cater to



various occasions with its combination of elegance, versatility, and a high level of service.

Embrace our celebratory events this Christmas and New Year’s Eve, or host a private or corporate event, as it is truly an experience above all else! For more information or to book, visit eureka89.com.au ●



When promises meet politics: the Lord Mayor's conflict of interest

During his election campaign, the Lord Mayor Nick Reece, made one promise that resonated deeply with voters – that he would not accept donations from property developers.

It was a refreshing commitment at a time when Melburnians were craving integrity in leadership. After all, in a city where planning decisions shape our skyline, our neighbourhoods, and the very character of Southbank, we needed reassurance that our leaders' decisions would be made in the public's interest – not influenced by those with the deepest pockets.

But recent revelations suggest that promise may have been broken again – this time affecting Southbank. We now learn that the Lord Mayor – along with three councillors from his own team – has been forced to declare a conflict of interest on a Southbank planning application due to developer donations to his election campaign. This is not a technicality; it strikes at the heart of public trust.

When the people of Melbourne went to the polls, they voted for leadership that would represent *them* – not developers, lobbyists, or campaign donors. Every councillor's vote on planning matters carries enormous weight, particularly when it comes to developments that alter our community's skyline, our access to sunlight, our traffic congestion, and our liveability. Yet how can our Lord Mayor truly represent us when he is compelled to stand aside on issues of such importance?

Some may argue that declaring a conflict is the right thing to do. And yes – transparency matters. But what does it say about our city's leadership when the very people elected to make the big decisions must continually excuse themselves from the table because of their financial ties? It's not just a matter of procedure; it's a matter of principle. Every planning decision that passes through Town Hall affects real people – our homes, our neighbourhood character, our quality of life. And yet, when it comes time to vote, the Lord Mayor is forced to step aside because of the very donations he once claimed to reject. That's not leadership – that's hypocrisy in its purest form.

Melbourne deserves better. Southbank deserves better. Our leaders should not only avoid conflicts of interest – they should avoid the appearance of them. When a promise is made to the public, especially one about integrity, it must mean something. Otherwise, the trust that binds elected leaders to their community begins to erode, one broken assurance at a time.

The question now is simple: how can we expect fair, unbiased decision-making for Southbank's future when the decision-makers themselves are entangled in the very interests they vowed to stay independent from?

Because leadership isn't about what's convenient – it's about what's right. ●

Tony Penna

PRESIDENT

Southbank
Residents Association



Celebrate Recycling Week at Fishermans Bend's Circular Design Collective

Melburnians are invited to celebrate creativity, sustainability and community at the Circular Design Collective Open Day, held on Sunday, November 16 in Fishermans Bend.

Hosted by FB IDEAs and supported by Gamuda Land Australia, the free family-friendly event will take place from 12pm to 3pm on Munro St, opposite 80, between Montague and Johnson streets in South Melbourne.

Coinciding with National Recycling Week, the event will showcase the ingenuity of local makers turning waste into wonder – from paper made of offcuts and inks created from print cartridge scraps to musical instruments crafted from reclaimed piano materials.

Housed in a once-vacant warehouse now transformed into a thriving creative hub, the Circular Design Collective brings together Melbourne's leading innovators in circular design and sustainable making. On the day, visitors can explore studio tours, live demonstrations, and art displays, while enjoying coffee from Killara Coffee Cart and a classic Men's Shed BBQ.

Participating studios include Dodgy Paper, Lousy Ink, Precious Plastic Melbourne, No Bull Cause, Artists for Kids Culture, After and Pianos Recycled, each showcasing how design can close the loop on waste.

"We're creating a living lab for circular design, a place where waste becomes a starting point, not an endpoint," said Kate Spencer, general manager at FB IDEAs. "The Circular Design Collective is proof that community, creativity and sustainability can coexist beautifully – and the Open Day is our invitation for everyone to be part of that story."

FB IDEAs, supported by the Victorian Government, is driving experimental urban renewal projects within Fishermans Bend. Visitors of all ages are encouraged to join the celebration, meet the makers and learn how creative reuse is reshaping Melbourne's future.

For more information: fbideas.org ●

ST JOHNS SOUTHGATE

Friends in new places

It's been almost two years since my wife and I moved from Adelaide to Southbank.

WORDS BY
PASTOR JAMES WINDERLICH

While our experience was initially bitter-sweet as it mingled our deep grief at leaving with the excitement of living somewhere new, we agree that new friends are one of the best gifts of living in a new place.

Aristotle (possibly) wrote, "A friend may well be reckoned the masterpiece of nature."

As newcomers it means everything to be woven into those masterpieces; to be seen and included. It nourishes a deep craving for connections that are commonly felt by all people, where to be a friend is just as life-enriching as it is to be befriended.

A lot goes on in friendships, and not all friendships do the same things. Some friendships connect us to each other through common interests, roles and tasks while others deeply connect us at our souls.

In his book, *On Friendship*, Andrew O'Hagen writes about how some friends, our "first friends", help co-construct our very being.

"First friends are the eternal ones, the mad ones, your original psychic twins. They are the freedom fighters of your schooldays and the steady wheels of your bid for personhood," O'Hagen states.

These deeply invested, heavy-lifting, challenging friends are the ones that I value most. They are true friendships and not echo chambers that agree with my every ignorant, careless, foolish thought and utterance.

These friendships confront and push back. They call me out. These friendships take risks and even endure offence to be, as O'Hagen suggests, "... the steady wheels of [my] bid for personhood."

They affirm my place in the world while defiantly challenging any sense of my centrality to it. They want what is good and are prepared to companion me as I find it. They invite me to grow and be a friend. They are Aristotle's "masterpiece".

As I walk around our neighbourhood, I wonder how many people might enjoy the masterpieces of O'Hagen's "first friends". It

appears to me that more people engage with their portable, black mirror, bias confirming echo chambers (phones and devices) than directly with other human beings. Their faces are turned down and not towards each other where, with expansive kindness, a friend might push back and show them that their own projects of personhood are always directly mediated person to person. Our friends don't reduce and radicalise us to singular causes and flat identities. Instead, they launch us for adventure. Fulsome, wild adventure.

According to one Hebrew-Christian tradition the human story begins with God's simple recognition, "It is not good for humans to be alone. I will provide helpers and partners for them" (Genesis 1:18). God knows our lonely aches for others, for our psychic twins by whom we are seen, heard, touched and known. Friends are good gifts from the God.

Making new, generous, and insightful friends has been one of the best parts of moving to Southbank as we realise that, even into grey hair, each of our "personhoods" are still being co-constructed.

Our new friends are much loved parts of that. We thank God for them. ●



St Johns
Southgate

Every Sunday
9am Worship

Check our website for updates

20 City Road Southbank Telephone 9682 4995 www.stjohnssouthgate.com.au



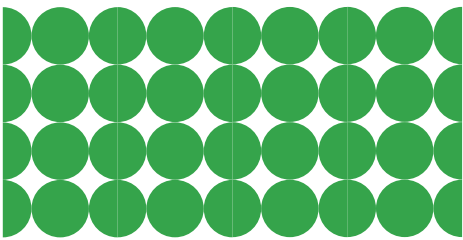
Metro Tunnel to take first passengers in early December

The Metro Tunnel will open in early December with hundreds of new services a week as part of the Summer Start.

Metro Tunnel services will run seven days a week and stop at all five new underground stations: Arden, Parkville, State Library, Town Hall and Anzac.

Trains will run every 20 minutes between Westall and West Footscray from 10am until 3pm on weekdays and 10am and 7pm on weekends. Weekend services will depart East Pakenham every 40 minutes and Sunbury every 60 minutes.

Jaye Wang



This will be a time for everyone to get familiar with the new systems and stations.

There will be more than 240 extra weekly services during the Summer Start in addition to existing services.

Passengers on the Cranbourne/Pakenham and Sunbury lines will continue their journeys as normal through the City Loop during the Summer Start, and connect to Metro Tunnel services at interchange locations, including Footscray and Caulfield stations.

On February 1 next year, the Metro Tunnel will be fully integrated into the wider transport network. This is when all services on the Sunbury and Cranbourne/Pakenham lines will travel exclusively through the new tunnel.

The Frankston Line will also return to the City Loop, improving access to the CBD for thousands of passengers on one of Melbourne's busiest lines.

The announcement of the first passenger services comes as major construction has finished on the CBD stations – Town Hall and State Library. The project's expert team is now working through the remaining trial operations exercises as part of the "dress



rehearsal".

To celebrate the opening of the Metro Tunnel, public transport users will have access to free weekend travel, providing an opportunity to see Melbourne's five new underground train stations.

Free Saturday and Sunday travel will apply

from early December 2025 to February 1, 2026, and extend across all modes of public transport across Victoria.

The Metro Tunnel will mean faster travel across the city – around 12 minutes from Arden in North Melbourne to Anzac on St Kilda Rd. ●

OWNERS' CORPORATION LAW

Don't expect the government to rescue OCs in the next legislative review

All stakeholder feedback and public consultation has now been completed, and the Expert Panel appointed by the Victorian Government to oversee a review of the *Owners Corporations and Other Acts Amendment Act 2021* is due to table their report to Parliament by December 1.

However, the terms of reference for the Expert Panel's report were unduly constrained, and so the report tabled runs the risk of not being able to consider amendments and reforms for owners' corporations (OCs) that are in dire need of being passed right now.

VCAT released a decision in July in relation to a power struggle between two OCs in Docklands.

The ruling determined that OCs are required to obtain a special resolution from its members before filing any legal proceedings for non-monetary actions. This includes actions against owners and occupiers for causing nuisance or having loud parties, excessive noise, unrestrained dogs, misuse of visitor parks, pursuing an owner for unlawful short-stay accommodation (AirBnB) activities, compelling repairs, or bringing actions to terminate a manager or building manager.

To obtain a special resolution or interim special resolution, an OC would need at least 51 per cent of the total owners in the building to vote in favour of the action.

It was previously understood that the committee had the power to file these types of proceedings in order to keep proper order and governance of the buildings they preside over.

The only way to fix this situation is for the *Owners Corporations Act* to be amended.

The panel was required to examine and make recommendations in relation to:

- Whether the governance and related reforms to the Act made by the Amendment Act are meeting their objectives.
- Whether the amendments made to the Act by the Short-Stay Act are meeting their objectives.
- The need for any specific arrangements under the Act for lot owners who experience difficulty paying their OC fees due to financial hardship, and how such arrangements could be balanced against the interests of other lot owners.
- Whether the existing arrangements in the Act to promote the probity and ethical conduct of OC managers are sufficient to protect the interests of lot owners.
- Whether existing measures in the Act to address non-compliance committed by OC managers, lot owners, residents, and others with duties under the Act are sufficiently robust.
- What is the most appropriate model for collective sales under Part 5 of the *Subdivision Act 1988* including examining reforms to the current threshold and what safeguards should be provided to protect lot owners who do not wish to sell.
- Whether existing voting processes in OCs are clear, effective, and fair for all lot owners.

None of these terms of reference would therefore give the Panel the power to recommend Parliament to fix the issue identified in the VCAT decision. ●

Tom Bacon

STRATA TITLE LAWYERS

TOM@STRATATITLELAWYERS.COM.AU



NEIGHBOURHOOD POLICING

Operation Consider and theft from motor vehicles

During the month of August, the Victoria Police State Highway Patrol and Melbourne Highway Patrol combined to launch Operation Consider in response to a surge in illegal and overpowered e-bikes on CBD roads.

Southbank Police regularly receives feedback from residential groups that e-bikes are ridden on footpaths at speed with riders not adhering to the road rules putting pedestrians at risk.

The crackdown included foot, bike, motorcycle, and highway patrols in Southbank and the CBD to enforce compliance. Legal e-bikes must not exceed 25km/h or 250 watts, 200 watts if throttle-activated. Overpowered models are now classed as motorcycles, requiring registration, a licence, and compliance with drug and alcohol laws.

Over four days of enforcement a total of 257 traffic infringement notices were issued for the following offences – unlicensed driving, unregistered motor vehicle, fail to wear approved helmet, use mobile phone, riding on footpaths and failing to obey traffic signals.

Southbank Police are continuing to see vehicles broken into by thieves. The vehicles targeted are parked on the street, in commercial multi-storey carparks and residential tower carparks. The following information can reduce the likelihood of becoming a victim of theft from your motor vehicle:

Remove all valuable items

Ensure you remove valuable items from your car before you leave.

- Do not leave any valuables in your vehicles. If you must leave valuables in your car, secure them out of sight in the boot or a locked glove box.
- Do not leave documents in your car – your address may be used to locate your



home and break into your car or home later. Documents might be used to steal your identity.

- Do not leave house keys or garage door openers in your car – they may be used in home burglaries.
- Install anti-theft screws on number plates.

Lock all doors and close all windows

Keep your car secure.

- Install a car alarm.
- Lock your car, even when parking at home or leaving your car for a moment.
- Lock your car when parked in a residential building carpark.
- Close all windows, including the sunroof.
- Lock external toolboxes and equipment, if they can't be removed.

Park in a well-lit and secure area

Ensure you park your car safely.

- Park off the street. A locked garage is best or a driveway if you don't have a garage.
- Lock your car when parked in a residential building carpark.
- If parked in a driveway, consider the installation of a sensor light and CCTV.
- If you need to park on the street, park in a well-lit area. ●

Snr Sgt Alex O'Toole

COMMANDER
SOUTHBANK POLICE STATION

SOUTHBANK-UNI-OIC@POLICE.VIC.GOV.AU



Massacre in Botanic Gardens, January 1924



The Botanic Gardens are treasured by residents of nearby Southbank, but they haven't always been peaceful. In the previous decade to 1924 the world was in turmoil, suffering the Great War and the Spanish Flu. But chaos was giving way to order.

On a pleasant summer evening in January 1924, the familiar picture of peace and beauty became the scene of horrific shooting of five people across four locations in the gardens.

The first to be fatally wounded was Mrs Strohbaker, a German pastrycook. She was sitting with a neighbour, Mrs Parry, a middle-aged woman from South Melbourne. Also sitting on the lawn, peacefully reading a book, was Miss Miriam Padbury, who was shot in the neck, dropped her book and died.

Next to be killed was Frederick McElwaine, a recent immigrant from Ireland. A happy family group of John Moxham, accountant of Essendon, and his wife and two children were then targeted by the killer who had crept through

WHERE THE FIRST SHOTS WERE FIRED.



the dense undergrowth by the reservoir. He then tried to shoot Mrs Moxham and then fired at her husband, who subsequently died of his wounds some days later.

As keepers and police arrived, a man was seen hurrying away from the gardens. He had been questioned by two constables in Alexandra Avenue 10 minutes

after the shooting but released. Authorities were hampered by lack of telephones in the Gardens – only two – one in the tearoom and one in the office.

The next day, a large bore repeating rifle found in shrubbery, together with box of soft-nose bullets. The rifle was new and police quickly determined it had

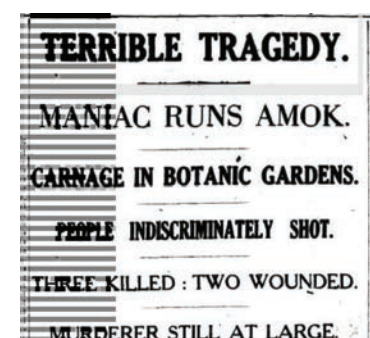
been sold to Norman Albert List of Richmond, a labourer aged 26. He was a solitary man, who spent his time studying mathematics, astronomy and surveying. But he showed signs of a persecution complex.

With a homicidal maniac at loose in the city, one press description described his actions as similar to those of Jack the Ripper in London. One theory was that he committed suicide by drowning but senior police believed that he was still alive and was now in regional Victoria.

On February 1, a fern cutter working near the station at Pakenham found the body of List in a creek. His body had severed arteries and was confirmed as suicide by the postmortem, with his body identified by his sister. He had been ill for some time, apparently suffering from paranoia and from headaches and fanatical and irrational hatred of females. He preferred to kill young women, and List was unacquainted with all the victims, and they with each other, except Parry and Strohbaker.

The press was criticised for “free and easy” way that they concluded that List was guilty without any proof and being able to claim his innocence. It was an era where

treatment of mental illness was in its infancy, despite the recent world war. ●



Robin Grow

AUTHOR AND HISTORIAN
OF SOUTHBANK

ROBINGROW@OZEMAIL.COM.AU

SOUTHBANK3006

Southbank3006's “why” is changing

Business leadership expert Simon Sinek argues that successful organisations inspire action by communicating their purpose or “why”.



WORDS BY
MARYKAY RAUMA

In October of 2021, four Southbankers gathered to form a new community organisation – Southbank3006 – born from shared values, integrity and belief in Southbank's tremendous potential. We were unified in the “why” behind our organisation: to build community, improve liveability and advocate for all Southbankers without personal agenda or gain.

As we approach our five-year anniversary, it's exciting to see how far Southbank has come and how Southbank3006 contributed to that growth. Our first meeting was between lockdowns, outside and socially distanced; a time when the proximity of living in Australia's most densely populated community was extremely stressful.

Consider social distancing properly when the only method to go in and out of your apartment building

requires travelling in an elevator. There was a very limited online community for Southbankers, one or two Facebook pages at most. People were starved for connection, but it was difficult to create momentum with recurring lockdowns.

Coming out of the COVID years was like starting up a rusty machine, but, with time, the city and its people slowly emerged from chrysalis and Southbank3006 worked tirelessly to connect the community in groundbreaking ways.

We created Southbank's first community celebration, A Very Merry Friend-mas, an event held for the last three years that inspired others to follow. We held community forums to discuss bike safety, impacts of artificial light on the environment, Southbank's First Nations' history and awareness, coffee socials, traffic management, pedestrian safety, owners' corporation reform and more.

We held forums for the community to interact directly with candidates in state and federal elections and with the Lord Mayor. We advocated with city, state and federal politicians to get livestock trucks back in the tunnel, efforts that resulted in a trial that began last January. We spearheaded conversion of the ACCA granitic sand forecourt into a park, resulting in 950 square metres of greenspace to be completed in 2026.

Our advocacy with the City of Melbourne has brought a fresh and different approach to tackling

challenges affecting livability and community development in Southbank. We've actively advocated on issues ranging from low traffic neighbourhoods, redefining open space, community safety, integration of destinations like the promenade and the arts precincts into the neighbourhood to advocacy about strata living reforms, including the impacts of short stay rentals on community cohesion in vertical living.

Southbank3006 has consistently proven to city, state and federal leaders that our solutions-focused, thoughtful input and ideas are worthy of serious consideration, earning our organisation the reputation of a respected collaborator.

Greater than these individual achievements, is the ripple effect of our “why” on the greater whole. Today, Southbank has a thriving network of social groups for all ages, an online community of thousands actively engaged in connecting and caring for our community, and multiple entities engaged in working to improve Southbank.

This evolution is allowing us to reexamine our “why” and ensure it is in alignment with what is best for Southbank's changing community and environment. We are excited about stepping into our five-year anniversary with new talent, energy, focus and contributions to Southbank.

Watch this space for exciting developments and join for free at southbank3006.com to receive updates first. ●

10 YEARS ON

NOVEMBER 2015 | ISSUE 47 |

SOUTHBANK *local* NEWS



High-rise masterpiece

A new work of art has been presented 38 storeys above the ground on the side of the Marco Apartments construction site in Southbank.

The development's builders, Crema Constructions, launched the first ever Australian “Gallery in the Sky” on November 8, as part of a commitment to supporting local street artists in Melbourne.

The original piece, titled *Everything You Change*, is the work of established street artist Adnate, who's best known for his stunning portraits, typically of indigenous people, that can be seen around the CBD.

Adnate said he painted indigenous cultural portraits “to raise awareness of their cultural beauty

and their struggle to survive in the western climate of today”.

Having produced the piece for the installation, Crema's managing director Luch Crema said it was wonderful to be able to showcase Adnate's work where everyone could see it.

“As the structure continues to rise over the next few months, Adnate's artwork will rise with it, giving Melbourne a brilliant piece of artwork to enjoy,” he said.

The original artwork will be featured and sold at Melbourne's Metro Gallery with all proceeds and an additional donation from the construction company going to the Victorian Aboriginal Childcare Agency (VACCA).

VACCA CEO Muriel Bamblett said the initiative would help raise much-needed funds for their art program mentoring vulnerable Aboriginal children and youth. ●

Quiz



1. What is the name of the concept design that proposes transforming Southbank’s Red Stairs into a giant coffee percolator?
2. What type of chestnut can be used as an eco-friendly detergent?
3. What is the name of South Melbourne’s first British–Indian pub, opening on Clarendon Street this month?
4. Netflix’s *Stranger Things* debuted in what year?
5. What has the government proposed to build along Whiteman St through the Crown Casino precinct as part of its Fishermans Bend Integrated Transport Strategy?
6. Which long-standing Southbank bookshop just reopened after a major renovation and will host the suburb’s first Children’s Book Festival in 2026?
7. *Phascolarctos cinereus* is the scientific name for which Australian animal?
8. Nestlé’s Milky Bar Kid is usually dressed as what type of character?
9. Sandi Toksvig (pictured) hosted which British competition show from 2017 to 2020?
10. Which famous Harlem-born artist’s first Australian solo exhibition, *Skin Tight*, is currently showing at ACCA in Southbank?
11. Maithili is a language spoken in which two countries?
12. Which Southbank building now bears a new mural by artist Tom McKenzie (aka Golden Boi)?

QUIZ SOLUTIONS

1. Espresso Grande 2. Conker/horse chestnut 3. The London Arms 4. 2016 5. A new tram line 6. Mary Martin Bookshop at Southgate 7. Koala 8. Cowboy 9. *The Great British Bake Off* 10. Tschabalala Self 11. India and Nepal 12. Victoria SES headquarters

5x5

No. 318

Insert the missing letters to make 10 words – five reading across the grid and five reading down.

R		K		S
	R		D	
A		A		N
	U		T	
T		A		E

SOLUTIONS

RAKES, ERODE, AGAIN, CULTS, TEASE

PUZZLES AND PAGINATION
©PAGEMASTERS PTY LTD
PAGEMASTERS.COM November, 2025

Sudoku

No. 053

Fill in the blank cells using the numbers from 1 to 9. Each number can only appear once in each row, column and 3x3 block

EASY

5					6		4	9
	3							
		9	5	8	2	3		
	7	5		2	9			
	2			6			5	
			7	5		6	2	
		2	9	1	5	8		
							1	
3	6		2					4

HARD

6			4	8				5
3					5		8	9
2								
				2	9	3		
	8						4	
		9	7	4				
								1
8	7		5					2
1				9	4			3

SOLUTIONS

4	6	5	8	7	2	7	8	9	3	6	1	9	8
2	2	1	7	3	4	9	8	5	6	8	5	7	8
8	9	8	5	1	6	2	2	7	7	4	4	6	6
8	2	9	4	5	7	5	3	6	1	9	8	7	8
7	5	6	1	1	4	4	4	4	1	2	2	8	7
1	1	4	8	2	2	8	5	4	9	7	7	9	6
9	7	6	2	8	3	7	6	5	4	1	4	9	8
5	8	5	1	7	1	9	6	4	9	3	2	2	8
6	4	2	4	9	3	8	1	5	8	5	8	5	6

8	7	8	4	7	6	2	2	5	3	9	1	6	7
2	2	6	4	1	1	9	5	3	8	7	8	8	8
1	9	5	8	8	3	8	3	6	4	6	6	6	6
8	8	2	1	2	8	7	4	6	1	4	6	3	5
9	4	6	3	5	1	2	8	5	1	2	6	8	7
7	5	6	2	2	8	9	1	4	1	4	4	1	4
9	1	6	3	5	1	2	5	7	9	7	4	4	4
2	5	8	8	2	2	1	1	1	1	4	9	7	2
5	8	8	7	2	2	8	4	4	4	4	6	9	9

Wordfind

Theme: Space exploration

The leftover letters will spell out a secret message.

G	N	I	R	A	G	A	G	S	S	E
N	T	U	A	N	O	R	T	S	A	X
O	A	P	E	N	A	A	E	P	T	P
R	S	A	O	V	T	L	S	A	E	L
T	M	O	I	I	T	E	H	C	L	O
S	M	T	O	H	L	O	U	E	L	R
M	Y	N	G	U	N	G	T	C	I	A
R	T	I	S	H	E	N	T	R	T	T
A	E	P	S	T	A	A	L	A	E	I
W	A	Z	U	Y	O	S	E	F	R	O
C	O	S	M	O	N	A	U	T	S	N

- ARMSTRONG
- ASTRONAUT
- CAPSULE
- COSMONAUT
- EXPLORATION
- GAGARIN
- GRAVITY
- MOON
- NASA
- SATELLITE
- SHUTTLE
- SOYUZ
- SPACECRAFT
- STATION
- WEIGHTLESS

Secret message: Apes among the stars

Crossword

No. 053

ACROSS

- 1 Small amounts (5)
- 4 Superfluous (9)
- 9 Proceedings of meeting (7)
- 10 Elementary particle (7)
- 11 Not artificial (7)
- 12 Settle (7)
- 13 Mediterranean islander (9)
- 15 Agreement (4)
- 17 Small island (4)
- 19 Tending to plants (9)
- 22 Corrected (7)
- 25 Radio broadcaster’s accessory, often (7)
- 26 First (7)
- 27 In the midst of (7)
- 28 Provider of information (9)
- 29 Lecher (5)

DOWN

- 1 Philander (8)
- 2 Upper house politician (7)
- 3 Gloomy (9)
- 4 Ending in (9)

1		2		3		4		5		6		7		8
9								10						
11								12						
13								14		15				
														16
	17	18				19						20		
21														
22				23		24		25						
26								27						
28										29				

- 5 Giver (5)
- 6 Naming words (5)
- 7 Type of acid (7)
- 8 Dig (6)
- 14 Compass direction (9)
- 15 Animals that prey on others (9)
- 16 Firebrand (8)
- 18 Local law enforcer (7)
- 20 Visible (2,5)
- 21 Polynesian island (6)
- 23 Less wet (5)
- 24 Land near river’s mouth (5)

SOLUTION

S	A	L	I	S	I	N	V	A	R	O	E	N	I	
O	H	R	S	I	E	F	I							
A	S	N	O	W	I	T	A	I	N	I				
V	I	L	E	E	R	H								
E	S	G	V	E	H	O	E	N	E	W	I			
I	N	G	I			H	I							
S	N	I	N	E	G	R	V	E	S	I				
V	O	V	E	R	O	N	N							
T	I	L	O	S	E	N	I	N	C	O	V	S		
E	A	T	O	S	E	N	I	N	C	O	V	S		
N	A	N	O	N	N	I	N							
N	O	S	I	E	N	S	E	N	I	N				
A	O	O	E	V	E	O								
A	N	V	O	N	G	E	R							

Codeword

No. 053

16	19	12	24		D		2	23	10	6	11	3	20
10		24		3			23		16		10		19
13	24	18	3	22	4	8		22		C	13	19	15
15		3					15		2		24		8
19	D	22	12	15			23	10	5	22	16	22	2
21				23			6		23		24		
22	6	11	2	8	10		2	22	15	19	7	22	
			10		13		D		13				2
16	24	9	15	19	21	22		6	19	14	10	2	
24		19			C		22			10		19	
22	9	9	3	24			6	19	2	17	24	20	15
5		1		9			22		10		9		24
20	22	19	5	22	22		D		10	12	15	24	C

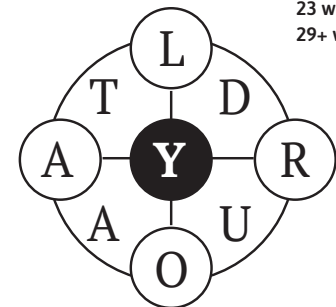
SOLUTIONS

C	O	D	E	S	G	A	S	Q	A	V	X	L	J
92	57	17	57	57	17	00	61	81	51	91	51	51	51
L	A	U	F	W	M	K	Y	N	O	B	P	L	
51	17	11	01	01	01	01	01	01	01	01	01	01	01

9-Letter

No. 053

Using the nine letters in the grid, how many words of four letters or more can you list? The centre letter must be included and each letter may only be used once. No colloquial or foreign words. No capitalised nouns, apostrophes or plural nouns ending in ‘s’.



Reference: Macquarie Dictionary

SOLUTIONS

ADULTORY, adyta, arty, aryl, datary, dory, dourly, dray, duly, duty, lady, LAUDATORY, layout, lory, orly, outlay, royal, ryot, tardy, tayra, toady, today, today, tray, troy, truly, tyro, tyro, yard, your, yurt

WHAT'S ON November



Find out what's on in
postcode 3006 this November.



FAMILIES OF COLOURS WORKSHOP

Artist Christina Darras leads a hands-on acrylic workshop exploring colour mixing, art history, and creative experimentation using primary colours, black, and white. All materials provided.

Mystik River, Southgate Shopping Centre

SATURDAY 29 NOVEMBER, 12PM – 3PM



COLIN HAY SOLO

Colin Hay performs Man At Work Vol. 2 at Melbourne Recital Centre, delivering decades of music, storytelling, soaring vocals, and an unforgettable, engaging live experience.

Melbourne Recital Centre

WED 3 – THURS 4 DECEMBER, 8PM



HANY ARMANIOUS: STONE SOUP

Stone Soup showcases Hany Armanious's transformed everyday objects, revealing the extraordinary in the ordinary through 80 works spanning 15 years, curated by Sillars, Comte, and Day.

Buxton Contemporary, Southbank

21 NOVEMBER – 11 APRIL, 11AM – 5PM



GOOD FOOD AND WINE SHOW MELBOURNE CHRISTMAS MARKET

Discover over 150 producers at the Good Food and Wine Show Christmas Market, offering gourmet treats, wines, and unique festive gifts for every foodie.

Melbourne Convention & Exhibition Ctr

5 – 7 DECEMBER, 10AM – 5PM



CHRISTMAS SQUARE

Experience Christmas at Fed Square with a 17.5-metre tree, light and sound shows, festive cheer, and sustainable celebrations presented by the City of Melbourne.

Fed Square, Melbourne

28 NOV – 25 DEC, 9.30AM – 11.30PM



DR SEUSS' HOW THE GRINCH STOLE CHRISTMAS

The Melbourne Symphony Orchestra performs James Horner's score live to *The Grinch*, where Cindy Lou Who discovers Christmas's true meaning.

Arts Centre Melbourne – Hamer Hall

THURSDAY 4 – SATURDAY 6 DECEMBER



THE SUNDAY MARKET AT SOUTHGATE

Come and explore, meet the makers and artists face-to-face and learn about their products and what inspires their work. Stallholders are positioned in marquees along the Yarra River.

Ground Level & Promenade, Southbank

SUNS UNTIL 28 DECEMBER, 10AM – 4PM

Business Directory

FUNCTIONS

St Johns Southgate

Facilities hire Beautiful venue for weddings and memorial services
Concert venue with excellent acoustic and comfortable seating
Spacious function room Meeting rooms Kitchen

20 City Road Southbank
Telephone 9682 4995
www.stjohnssouthgate.com.au

EDUCATION

PHOTOGRAPHY STUDIES COLLEGE

PSC.EDU.AU
study@psc.edu.au
9682 3191

37-47 Thistlethwaite Street
South Melbourne 3205

PHYSIOTHERAPIST

PHYSIO PARTNERS

- chronic disease, neurological, cardiorespiratory, musculoskeletal
- bulk-billed/no-gap fees: Medicare EPC, Worksafe, TAC, DVA, NDIS
- CBD clinics (Flinders St and QV)
- online bookings

t (03) 9125 1500
f (03) 9125 1511

www.physiopartners.com.au
hello@physiopartners.com.au

ARTS

Australian Centre for Contemporary Art

111 Sturt Street
Southbank VIC 3006
Melbourne

acca.melbourne

acca

REAL ESTATE

RayWhite

Ray White Southbank | Melbourne City
273 City Road, Southbank 3006
P: (03) 8102 0200
www.raywhitesouthbank.com

ESCORTS

THE MOST EXCLUSIVE ESCORT AGENCY

Paramour
OF COLLINS STREET

CITY CENTRE
Melbourne's exclusive entertainment service.
Highly recommended for our interstate and overseas visitors

- Dinner Companions
- Social Escorts
- Sensual Ladies

Scan QR code for pictures of ladies

SCAN

TEXT: 0477 291 058

(03) 9654 6011

WE HAVE SURVIVED COVID-19 AND ARE STILL HERE TO HAVE BEAUTIFUL LADIES PRIVATELY TO YOUR DOOR 24/7

CBD - 5 MINUTES TO YOUR DOOR
たくさんの美しい女性
日本語を話します

Here today, gone tomorrow

RayWhite

Scan QR for further details.

Call us on 8102 0200 or email us via southbank.vic@raywhite.com to book an appraisal for sale or rental. Visit raywhitesouthbank.com.au for more details.



4601/35 Queens Bridge Street, Southbank
\$900,000 - \$990,000 Bence Balazs



41/88 Kavanagh Street Southbank
\$600,000 - \$660,000 Bence Balazs



237/88 Kavanagh Street Southbank
\$585,000 - \$640,000 Bence Balazs



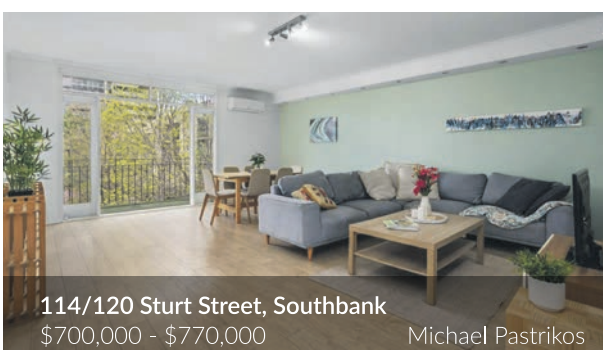
2901/118 Kavanagh Street, Southbank
\$550,000 - \$605,000 Bence Balazs



25/88 Wells Street Southbank
\$660,000 - \$725,000 Michael Pastrikos



1604/241 City Road, Southbank
\$595,000 - \$650,000 Michael Pastrikos



114/120 Sturt Street, Southbank
\$700,000 - \$770,000 Michael Pastrikos



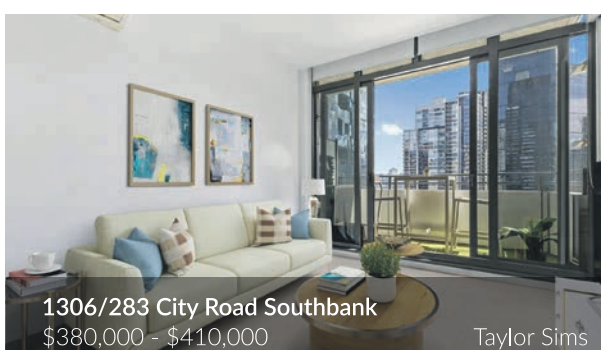
2009/118 Kavanagh Street Southbank
\$550,000 - \$605,000 Max Hui



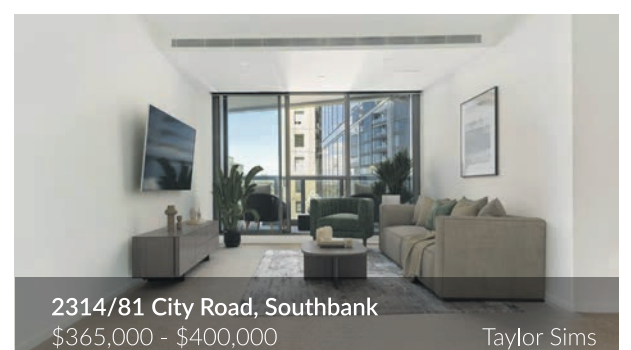
3201/57-61 City Road, Southbank
\$440,000 - \$480,000 Max Hui



3909/241 City Road, Southbank
\$530,000 - \$550,000 David Umana



1306/283 City Road Southbank
\$380,000 - \$410,000 Taylor Sims



2314/81 City Road, Southbank
\$365,000 - \$400,000 Taylor Sims



3710/220 Spencer Street Melbourne
\$420,000 - \$460,000 Ben Vu



1111/915 Collins Street, Docklands
\$800,000 - \$850,000 Tommy-Lee Davies

Michael Pastrikos: 0404 282 864
Max Hui: 0430 238 021
Tommy-lee Davies: 0416 823 173
Taylor Sims: 0403 485 210
David Umana: 0481 222 376
Bence Balázs: 0411 758 859
Jolene Tan: 0466 366 041
Lachie Kelly: 0411 446 204
Ben Vu: 0489 186 662

raywhitesouthbank.com.au